

THE °CRYO PENGUIN™



What is Cryotherapy?

Cryotherapy is the science of exposing the body to sub-zero temperatures in order to stimulate physical and mental health benefits. It reduces inflammation in the body by boosting an anti-inflammatory chemical called norepinephrine.

Cryotherapy also boosts blood circulation throughout the body which results in a higher metabolic and caloric burn rate. The treatment also increases the level of endorphins which can elevate mood and reduce stress.

In terms of beauty benefits, cryotherapy increases collagen production, which in turn tightens the skin, and brings forth a youthful glow.



What is Localised Cryotherapy?

Localised cryotherapy is the application of cryogenically cooled air to specific parts of the body.

Localised cryotherapy can be used for two main categories:

Beauty Treatments

Beauty treatments such as °CRYO Facials or cellulite reduction use localised cryotherapy technology. The facials increase the collagen production in the skin and leaves the skin visibly smoother with a restored youthful glow.



Pain Management & Injury Recovery

Localised cryotherapy can also be used to alleviate pain, inflammation and speed up recovery from injuries through cryogenically cooled air penetrating deeper into the layers of tissue and increasing blood circulation.



°CRYO PENGUIN™

The °CRYO Penguin™ is designed to deliver the easiest, safest and most effective localised cryotherapy treatments in the industry. With its ergonomic design, pre-programmed treatment protocols, and built-in safety features, the °CRYO Penguin™ offers the highest standards in cryotherapy treatments.

The °CRYO Penguin™ series can also be used to complement and upgrade your existing menu to include cryotherapy treatments.



°CRYO PENGUIN™ - Features

Auto-balancer to maximize ease-of-use

10" Digital touchscreen with user-friendly interface

50 liter mobile nitrogen vessel that can be refilled at any time

Protocols for °CRYO Facials, Localised °CRYO, and Cellulite Reduction treatments

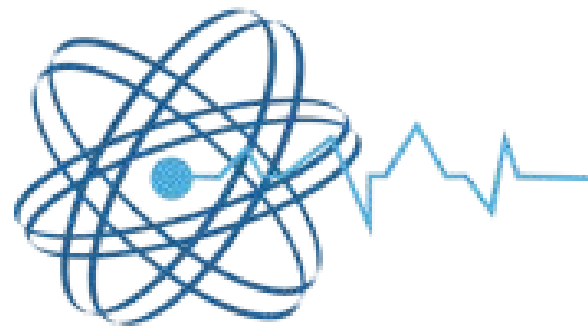
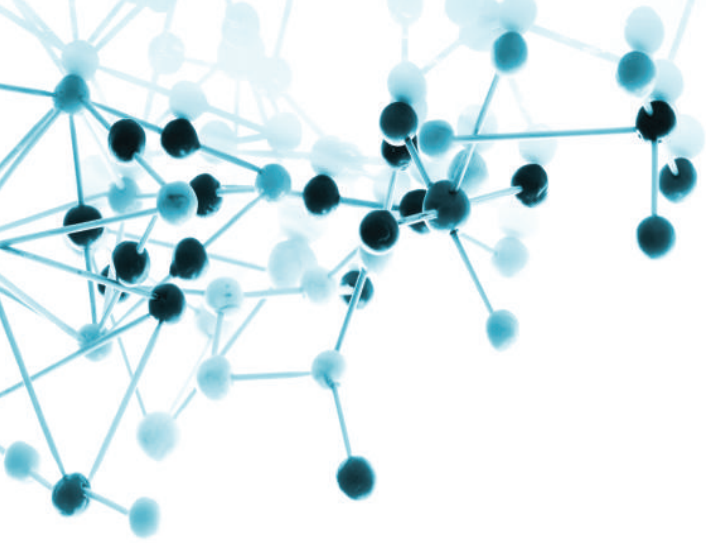
LED lights and precision lasers to indicate optimal distance, pinpoint treatment area, and alert user when critical skin temperature is reached

Ergonomic handle with remote control feature



°CRYO PENGUIN™ - Features Comparison

	Features	°CRYO Penguin
Treatment Types	°CRYO Facials	✓
	Localised °CRYO	✓
	Cellulite Reduction	✓
Treatments	Beauty & Anti Aging	9 programs
	Sports & Injury Recovery	15 programs
	°CRYO Pro Mode	✓
	Reporting	✓
Safety Features	LED lights - Indicate optimal distance to conduct treatment	✓
	LED lights - Pinpoint treatment area	✓
	LED color change to alert user of critical skin temperature	✓
	Liquid Nitrogen – Light and sound alert when filling the nitrogen vessel	✓
Refilling System	Mobile vessel to increase ease of use	✓
	Can be refilled immediately at any time – No requirement for disassembly evaporator	✓
Features	Ergonomic handle	✓
	Touchscreen with user-friendly interface	10"
	Handle support arm with auto-balancer	✓
	Remote control feature on the handle to maximize ease of use.	✓
Nitrogen Vessel	Mobile Nitrogen Vessel	50 L



www.energywellnesspartners.com

Get in touch with us

info@energywellnesspartners.com
www.energywellnesspartners.com

