



Central Electric Power Association

A tradition of dependable, hometown service since 1937

Carthage 601-267-5671 • Philadelphia 601-656-2601
Rankin 601-829-1201 • Sebastopol 601-625-7422

April 18 storm ripped through Central Electric service area

Tornadoes, strong thunderstorms and damaging winds hit central Mississippi on Thursday, April 18. Central Electric Power Association experienced sustained power outages in Attala, Leake, Neshoba, Scott, Rankin, Newton and Kemper counties and promptly mobilized their field operations staff. CEPA worked through the night to restore power.

On Thursday, April 18, 2019 around 6:30 p.m., 27,745 of the 36,344 Central Electric members were without power. At the onset of the storms, source power was lost to South Philadelphia, Crossroads, Pearl River, Leake, Singleton, Kosciusko, Twin City and Ludlow substations. TVA transmission lines to the above mentioned substations were energized on Friday morning, April 19.

Assistance arrived on Friday, April 19 and Saturday, April 20 to aid in power restoration to approximately 76 percent of Central Electric's power system. Central Electric would like to thank: Alcorn County EPA, North East EPA, Natchez Trace EPA, Tallahatchie Valley EPA, Coahoma EPA, Tishomingo County EPA, Yazoo Valley EPA and Northcentral EPA for their

Outages, by the numbers:
Total meters out by day
Thursday, April 18 – 27,745
Friday, April 19 – 9,000
Saturday, April 20 – 3,800
Easter Sunday, April 21 – 1,900
Monday, April 22 – 1,100

assistance in rebuilding our power system.

As of 8:00 p.m., Tuesday, April 23, all power had been restored to all members that could safely receive power. General Manager Brian Long praised CEPA employees along with the employees from eight cooperatives in Mississippi. "To restore power to 27,745 members in 5 days with the damage Central Electric sustained is a great accomplishment," he said.

Central Electric Power Association would like to thank the membership for their patience and support during the April restoration efforts.

Central Electric Power Association serves over 36,000 member-consumers in a seven-county area in central Mississippi, including Attala, Kemper, Leake, Neshoba, Newton, Rankin and Scott counties.

THANK YOU!

Alcorn County EPA, North East EPA, Natchez Trace EPA, Tallahatchie Valley EPA, Coahoma EPA, Tishomingo County EPA, Yazoo Valley EPA and Northcentral EPA



CENTRAL ELECTRIC POWER ASSOCIATION
 will be closed Thursday, July 4
Independence Day
 In case of a power outage or emergency, please call 1-866-846-5671. CEPA Dispatcher on duty 24 hours a day, 7 days a week.

ECM FOUNDATION | Scholarship Recipients

The Electric Cooperatives of Mississippi Foundation was created by the electric cooperatives of Mississippi in 2005. In an effort to give back to the communities they serve, the Foundation provides scholarships for post-secondary and vocational education to accredited institutions for qualifying high school seniors. For the fall of 2019, the Foundation awarded scholarships to dependents of employees of participating electric cooperatives. Five Central Electric employee's children who are entering college this fall were awarded the ECM Foundation Scholarships. Central Electric wants to congratulate each recipient on receiving this scholarship.



Noah Pickett

Noah Pickett is the son of Darrin and Linda Pickett. He is a graduate of Neshoba Central High School. Noah enjoys golf, bowling, hunting and lifeguarding at Geyser Falls Water Park. Noah plans to attend East Central Community College and Mississippi State University to pursue a degree in criminal justice.



Abbie Shoemaker

Abbie Shoemaker is the daughter of Jeremy and Nikki Shoemaker. She is a graduate of Pisgah High School. Abbie enjoys playing the piano and singing, baking and working with individuals with special needs. She is excited to serve the Lord on a mission trip to Costa Rica this summer. Abby plans to attend Hinds Community College to pursue a degree in nursing, specializing in developmental disability nursing.

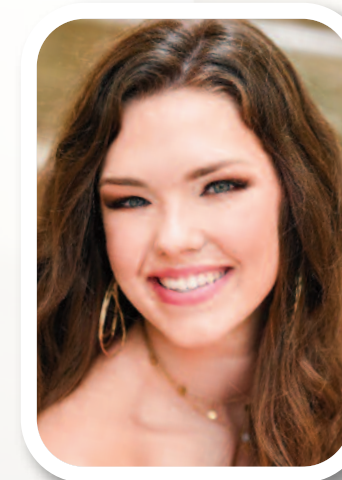
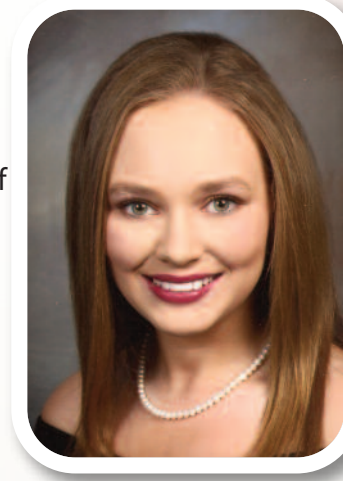
Tanner Wilcher

Tanner Wilcher is the son of Jimmy and Cyndi Wilcher. He is a graduate of Leake Central High School. He enjoys spending time with family and friends. He attends Mt. Carmel Baptist Church where he enjoys being involved with the youth group. Tanner plans to attend East Central Community College to pursue a degree in criminal justice, with plans to attend the police academy.



Alana Patterson

Alana Patterson is the daughter of Neil and Jessica Patterson. She is a graduate of Leake Academy. She enjoys all things dance and spending time with family and friends. Alana attends Freeny Baptist Church where she actively participates in youth group activities. Alana plans to attend Mississippi Gulf Coast Community College and the University of Southern Mississippi to pursue a degree in marketing and a minor in dance choreography.



Clancy Scott

Clancy Scott is the daughter of Jerrell Scott and the late Lynn Scott. She is an honor graduate of Leake Academy. She enjoys basketball, riding horses and spending time with family and friends. Clancy plans to attend East Central Community College and the University of Mississippi to pursue a degree in pharmacy.

Congratulations