



Central Electric Power Association

A tradition of dependable, hometown service since 1937

Carthage 601-267-5671 • Philadelphia 601-656-2601 • Rankin 601-829-1201 • Sebastopol 601-625-7422

Keep cool for less

There are many easy ways to make your home more efficient, like reducing solar gains, insulating and ventilating the attic and sealing air leaks. However, if you are experiencing higher electric bills, you may need to focus on inefficiencies in your home's cooling system.

Weather can have a major impact on energy bills, and when the outdoor temperatures become extreme, your heating and cooling equipment works harder to keep your home comfortable. But before we address the cooling system, let's look at some other potential problems:

- Do you have a freezer or second refrigerator in the garage? This can be a major energy hog, especially if it's old and you live in a warmer climate.
- Do you have a well? Your pump may be draining your energy use as you rely on it more during the summer. Start by looking for leaks in the system, and if necessary, reduce irrigation.
- How about a swimming pool? It may be time to overhaul or replace the pool pump. If the pump is in good shape, try putting it on a timer.

If you have central air conditioning (A/C) or a heat pump, make sure your filter has been changed or recently cleaned. The next step is to call an HVAC contractor for a tune-up and a complete assessment of the system. A tune-up can improve the efficiency and extend the life of the unit. The tune-up includes cleaning the condenser coil, a check of the refrigerant levels and a good look at the pump and electrical contacts. Talk to the

contractor about the efficiency of the A/C unit. If it's old, it may be cost-effective to replace it, even if it's still functional.

Ductwork is equally important as the A/C unit, so make sure the contractor you choose is capable and willing to provide an expert assessment. A real pro will know how to measure the air flow at each supply and return register.

If you're not getting cool air to the rooms that need it, the contractor may be able to make modifications to the ductwork.

Leaky ductwork could be your problem. If the ducts are in unconditioned areas like a crawl space or attic, it's especially important to make sure they're sealed and insulated. It will also help to seal ducts that are in conditioned spaces.

Some HVAC contractors can do a duct-blower test to measure duct leakage. Discuss whether you should ever close any supply registers. Most experts recommend that supply registers are always open.

If you cool your home with window A/C units, there are a few things you can do to maximize your cooling while keeping costs as low as possible:

- Use window A/C units in rooms that can be closed off with a door, to make the cooling as effective as possible.
- Make sure you have the right sized unit for the size of the room. A unit that's too big will cool the room before the humidity has been lowered, which will make it feel less cool, while a unit that's too small will have to work harder, causing a shorter lifespan – and it may not do the job.
- Use an electric fan or ceiling fan to help distribute the



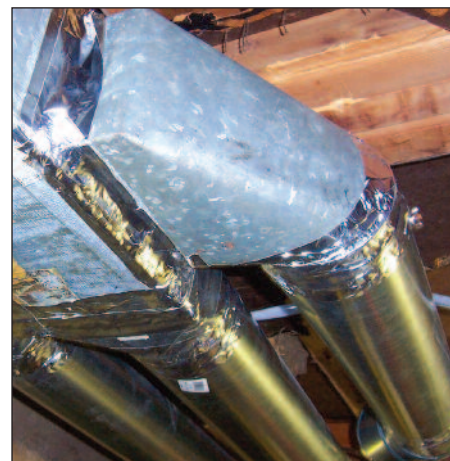
An HVAC inspector can tell you if your ducts are leaking or in need of insulation. Photo by: Julep67Weimer



A/C unit is installed flat or according to manufacturer's directions, so that it drains properly. Photo by: Your best digs



That old fridge or freezer in your garage could be taking a bite out of your wallet. Photo by: Alex Weimer



A Duct Blower test can identify air leaks in your home's ductwork. Photo by: Ket555

cold air throughout the area you are cooling.

- Turn off the A/C unit when no one is in the room.
- If your window A/C unit isn't cooling properly, it may need to be replaced. Look for an ENERGY STAR-certified unit to make the most of your cooling dollars.

Of course, the simplest way to save money on your A/C is to not use it. As much as possible, keep your activities limited to rooms that are easily cooled. Try to spend more time cooking and eating outdoors.

Local Student Receives TVA Power Distributors Scholarship

We all recognize that student leaders of today are the business leaders of tomorrow. The Power Play Scholarship Association is a program that recognizes those student leaders who excel in both the classroom and the community. Made up of 16 local power company (LPC) managers representing the Valley region's 154 LPCs and TVA representatives, the Power Play Scholarship Association has awarded 608 scholarships (including this year's recipients) totaling more than \$2.3 million to children of LPC employees since being established in 1995.

Noah Pickett has been awarded a \$4,000 scholarship through a special program made possible by Central Electric Power Association, the Tennessee Valley Authority and other local power companies across TVA's seven-state service area.

Noah, the son of Darrin and Linda Pickett, is among 30 recipients of this year's scholarship. Noah recently graduated from Neshoba Central and will be pursuing a degree in criminal justice.



We are excited to announce that the September issue of *Today in Mississippi* will have a new look. The state's most widely circulated publication will transition to a magazine format. The publication's content will continue to reflect Central Electric Power Association's pride in the communities we serve and our beautiful home state.

For more than 72 years, *Today in Mississippi* has been the primary resource to keep our cooperative members informed while also offering a unique blend of feature stories, columns, photo contests, recipes and more – all centered around life in Mississippi.

What will change? The new magazine format will reflect a high-quality, colorful and sophisticated design. By increasing to 32 pages, the additional space will allow us to deliver even more interesting and entertaining content along with dynamic photographs – and all in an easy-to-read layout. As we transition

to the new format, we will also improve the online digital offerings of *Today in Mississippi*.

What will not change? Our commitment to our loyal readers. Since our beginning in 1948, we have listened to you – through phone calls, letters, emails and surveys – and can proudly say that our publication has been designed and inspired by our readers. We will continue to work hard to maintain the trust you have placed in us.

We look forward to sharing with you soon the fresh, new look of our publication and also a renewed commitment to delivering quality stories and family-friendly content celebrating life in Mississippi. And, it continues to be our privilege to be your source for valuable information about your cooperative, new recipes, travel, events, gardening, outdoor life and so much more.

Thanks for being a *Today in Mississippi* reader.

Stay back and stay safe

Working with electricity can be a dangerous job, especially for lineworkers. In fact, *USA Today* lists line repairers and installers among the most dangerous jobs in the U.S. That's why for Central Electric, safety is the number one priority. This is not empty talk. Over time, we have created a culture of putting our crews' safety and that of the community above all else.

Our mission is to provide safe, reliable and affordable energy to you, our consumer-members. Yes, we strive to deliver affordable and reliable electricity to you, but equally important, we want our employees to return home safely to their loved ones. This requires ongoing focus, dedication, vigilance – and your help!

Distractions can be deadly

While we appreciate your kindness and interest in the work of our crews, we ask that you stay back and let them focus on their task at hand. Even routine work has the potential to be dangerous, and it takes their full attention and that of their colleagues, who are also responsible for the team's safety. Distractions can have deadly consequences. If a lineworker is on or near your property during a power outage, for vegetation management or for routine

maintenance, please allow them ample room to work. These small accommodations help protect our crews – and you.

If you have a dog, try to keep it indoors while lineworkers are on or near your property. While most dogs are friendly, some are defensive of their territory and can't distinguish between a burglar and a utility worker. Our crews work best without a pet "supervising" the job.

We recognize that for your family's safety, you want to make sure only authorized workers are on or near your property. You will recognize Central Electric employees by their blue uniform shirts with the Central Electric logo, and the service trucks with our name and logo on them. You may also recognize our lineworkers because they live right here in our local community.

Slow down and move over

In addition to giving lineworkers some space while they are near your property, we also ask that you move over or slow down when approaching a utility vehicle on the side of the road. This is an extra barrier of safety to help those who help all of us. It's also the law! The Mississippi "Move Over Law" is in place to protect our crews as well as medical, maintenance and law enforcement personnel.

Tip of the MONTH

When it's warm out, avoid using the oven. Try cooking on the stove, using the microwave or grilling outside instead.

Source: energy.gov

