

BASIC SPECIFICATION SUMMARY



Boeing 737 MAX 8

Rev.: No. 1

Date 04-OCT-2017

Confidentiality and Disclaimer:

All rights reserved. This document is the sole property of the Seller. This document has been drafted and distributed for information purposes only. This document may not be reproduced or (re) distributed or otherwise utilized in part or whole without the express prior written permission of the Seller. While the information presented in this document is given in good faith based upon the most current information available to the Seller, changes or modifications with respect to the subject aircraft and the associated records and documentation may be made at any time. No express or implied warranty or representation is made and this document may not be regarded as establishing any obligation on the part of the Seller or any of its affiliates. It is expected that interested parties will conduct an independent physical inspection of the aircraft and associated records and documentation.

AIRCRAFT IDENTIFICATION

Aircraft Model	Boeing 737 MAX 8
Manufacturer Serial Number	TBA
Manufacture Date	TBA
Engines Model	CFM LEAP-1B ENGINES - 1B25 RATING
Sharklets	YES
Noise Abatement Compliance	Stage IV iaw. ICAO Annex 16, Volume 2
Approach Category	CAT IIIB Capable
ETOPS	120 min
Over Water	None

* OVER WATER OPERATION CAPABILITY CAN BE ADDEDD UPUN REQUIREMENT.

WEIGHTS, OPERATIONAL	METRIC	US
Maximum Take Off Weight (MTOW)	72`302 (kg)	159`400 (Lbs)
Maximum Landing Weight (MLW)	68`175 (kg)	150`300 (Lbs)
Maximum Zero Fuel Weight (MZFW)	64`818 (kg)	142`900 (Lbs)
Maximum Usable Fuel Capacity	26`041 (Liters)	6`879 (USG)

* HIGHER WEIGHT VARIANTS CAN BE SELECTED AT ADDITIONAL COSTS.

AIRFRAME STATUS

Total Airframe Hours	0:00 *
Total Cycles	0 *
Status Date	23-JUL-2017

* UP 10 FH AND 5 FC SHALL BE EXPECTED UPON DELIVERY OF THE AIRCRAFT FROM MANUFACTURER.

MAINTENANCE STATUS

A - Check interval	120 Days
C - Check interval	36 MO
HM Check	9 Years/15 Years/21 Years

* AS PER BOEING MPD.

ENGINE / APU DETAILS	Engine 1	Engine 2	APU
Manufacturer	CFM	CFM	Honeywell
Model	CFM LEAP-1B25	CFM LEAP-1B25	GTCP 131-9B
Thrust Rate	25`000 Lbf *	25`000 Lbf *	
First LLP Limiter	20`000	20`000	30`000

* OTHER, HIGHER POWER CAN BE SELECTED AT ADDITIONAL COST.

LDG DETAILS	NLG	LH MLG	RH MLG
Manufacturer	Boeing		
Part Number	TBA	TBA	TBA
Position	NLG	LH MLG	RH MLG
Overhaul Due Date	JAN-2019	JAN-2019	JAN-2019
Overhaul Interval	21`000 CYC or 10 Years	21`000 CYC or 10 Years	21`000 CYC or 10 Years
Brakes		Messier Bugatti	Messier Bugatti
Wheels	Messier Bugatti	Messier Bugatti	Messier Bugatti

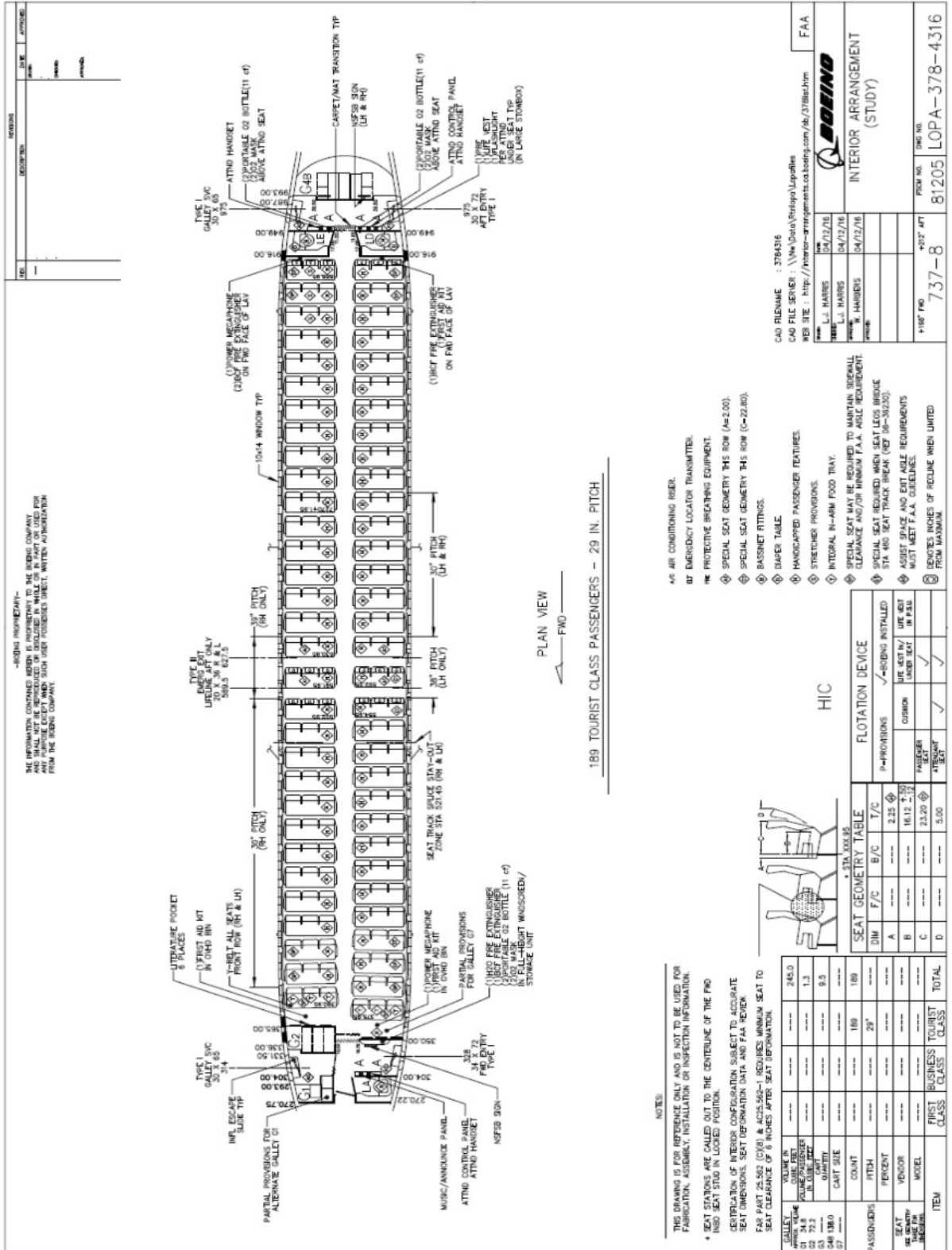
* OTHER VENDOR FOR WHEELS AND BRAKES CAN BE SELECTED.

MAJOR AVIONICS EQUIPMENT			
DESCRIPTION	MANUFACTURER	PART NUMBER	QTY
ATA 22 - Automatic Flight Controls			
Dual FMC with Multi-Control Display Unit	TBA	TBA	2
ATA 23 – Communication			
Transceiver VHF/COMM	Rockwell Collins	822-1287-101	3
Transceiver HF/COMM	Rockwell Collins	822-0987-004	1
ATA 31 - Indication and Recording System			
Solid State Flight Data Recorder	Honeywell	980-4750-003	1
Solid State Cockpit Voice Recorder	Honeywell	980-6116-001	1
Multi-Input Printer	Honeywell	8055515-4507	1
ATA 34 – Navigation			
MMR - Multi Mode Receiver ILS/GPS	Rockwell Collins	822-1821-002	2
Weather Radar (WRX)	Rockwell Collins	822-3150-101	1
TCAS II 7.1 Computer	Rockwell Collins	822-2911-002	1
ATC-Mode S Transponder	Rockwell Collins	822-1338-205	1
Radio Altimeter Transceiver (RA)	Rockwell Collins	822-0334-003	2
VOR Receiver	Rockwell Collins	822-0297-001	2
DME Interrogator	Rockwell Collins	822-2325-001	2
ADF Receiver	Gables	G7403-03	1

* OTHER AVIONICS VENDORS AND PART NUMBERS CAN BE SELECTED.

INTERIOR CONFIGURATION NO.1

Galleys	3 (G1; G2; G4B)	Catering Standard	ATLAS
Lavatories	3	Cargo Configuration	All Bulk – No CLS
Attendant Seats	5	Cockpit Configuration	Standard (2+2)
In Flight Entertainment	None	Crew Rest	None
<u>Seats</u>	<u>Quantity</u>	<u>Layout</u>	<u>Pitch</u>
Economy	189	3 + 3	30 Inch



MODIFICATIONS TIMEFRAME

36 Weeks	Aircraft Structure Impact	Example: Adding hardpoints C/L Overhead
34 Weeks	Interior reconfiguration	Example: PAX recount
34 Weeks	Wiring change that add or delete wire bundles	
28 Weeks	Pin selectable features	Example: Setting dip switches that affect
28 Weeks	New Livery	
24 Weeks	Supplier Change	Example: Avionics Box
20 Weeks	Weight & Thrust Changes	
20 Weeks	Livery Changes	
18 Weeks	Manual Changes	
18 Weeks	Software Changes	