

# Small Fitted Crib Sheet

## Supplies: (Makes one sheet)

7/8 yard of 45 inch wide cotton or cotton/poly blend fabric  
1 1/8 yards of 1/4 inch elastic (40 inches)  
Thread

## Cutting:

1. Cut two pieces of elastic, each 20 inches long.
2. From fabric, cut a rectangle that measures 37 by 50 inches.
3. Cut a 6-inch square from each corner. (Figure 1)

NOTE: To cut all four squares at one time, fold fabric in half once by length and again by width. Then cut a square from all four thicknesses.

The result should be shaped like Figure 2.

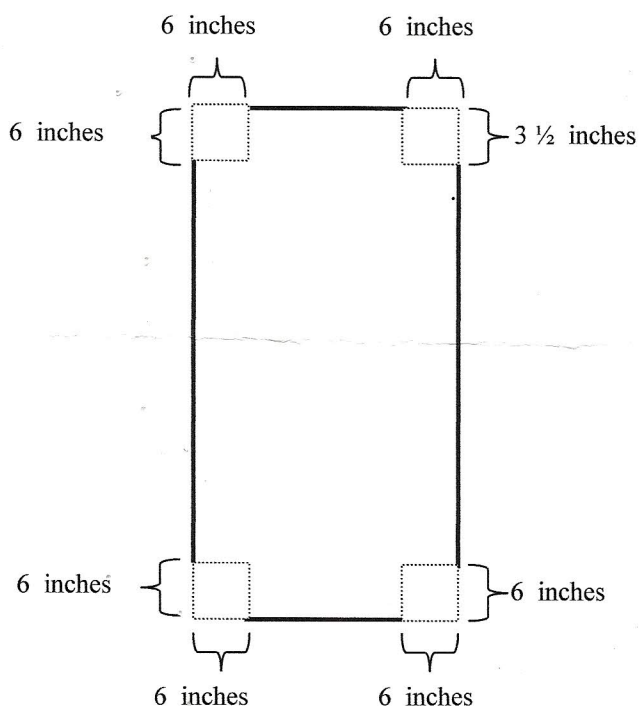


Figure 1

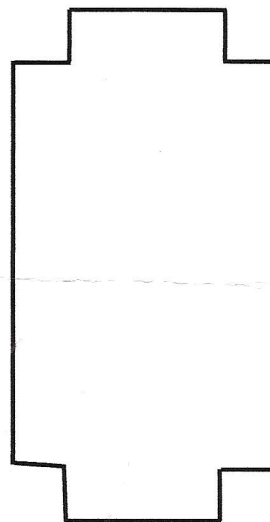


Figure 2

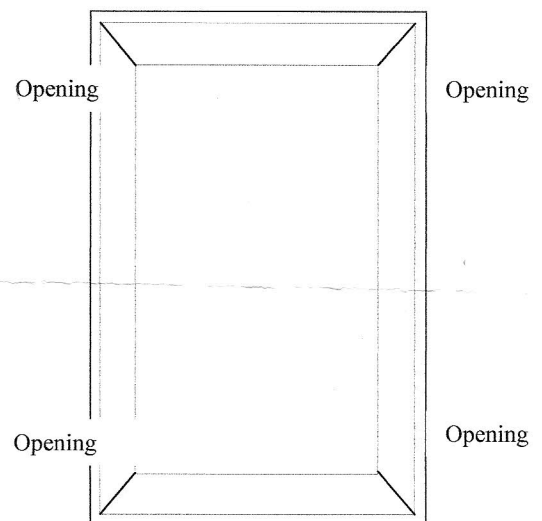


Figure 3

## Sewing:

1. Meet wrong side edges of each cut-out square and stitch to form box at each corner. Press and turn meeting right sides together. Stitch 3/8" seam. This creates a fitted sheet corner with French seams.
2. Turn under 1/8 inch along entire edge of sheet and press.
3. Turn under 1/2 inch along entire edge of sheet to form casing and press.
4. Stitch along folded edge to form casing, leaving small opening 10 inches from top and bottom edges on each side for inserting elastic. (Figure 3)
5. Insert 20" of elastic into casing at each end of sheet. Stitch end of elastic to secure and stitch along each opening to close the casing.