


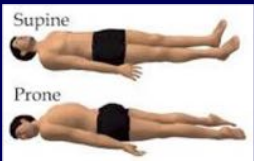
Emergency Medical Responder

# THE HUMAN BODY



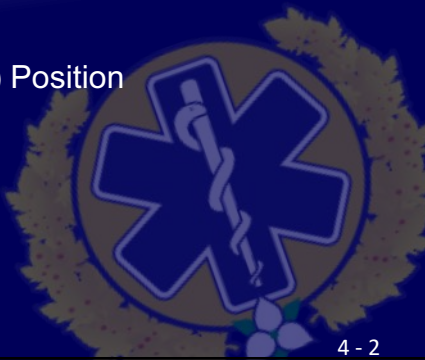
## ANATOMICAL TERMS

- Anatomical Position
- Supine Position
- Prone Position
- Lateral Recumbent (Recovery) Position



Supine

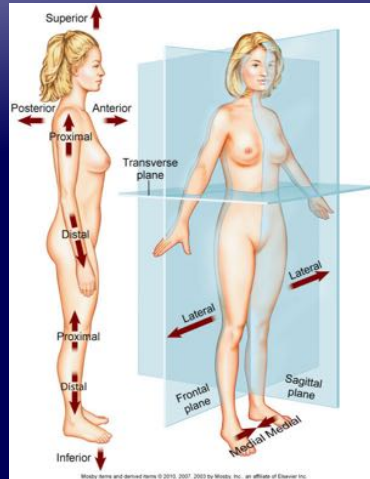
Prone





## ANATOMICAL DIRECTIONS

Superior	Inferior
Anterior	Posterior
Medial	Lateral
Proximal	Distal
Superficial	Deep
Internal	External

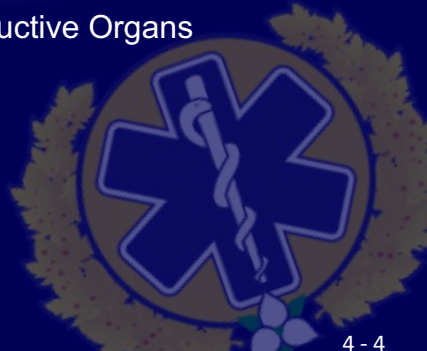


4 - 3



## Body Cavities

- Thoracic (Chest) - Lungs and Heart
- Abdominal - Digestive Organs
- Pelvic - Excretory and Reproductive Organs

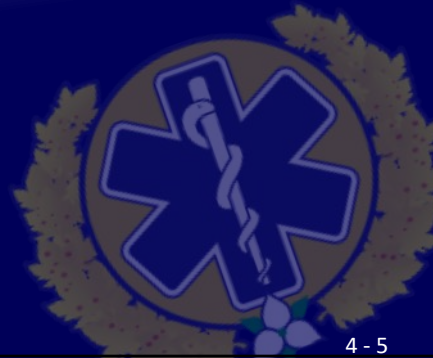


4 - 4



## BODY SYSTEMS

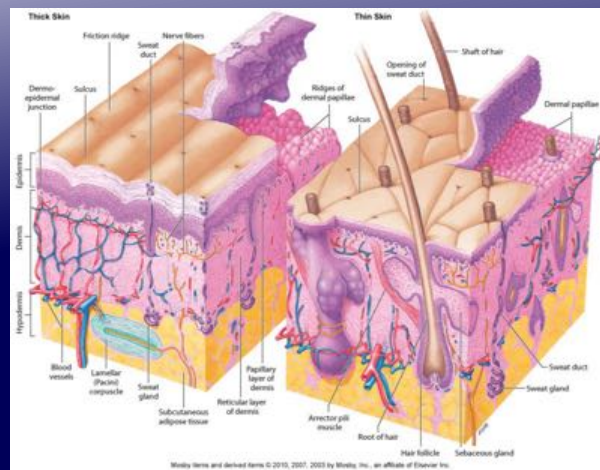
- Musculoskeletal (skeleton and muscles)
- Respiratory
- Circulatory
- Nervous
- Skin (Integumentary)
- Digestive
- Urinary
- Endocrine
- Reproductive




4 - 5

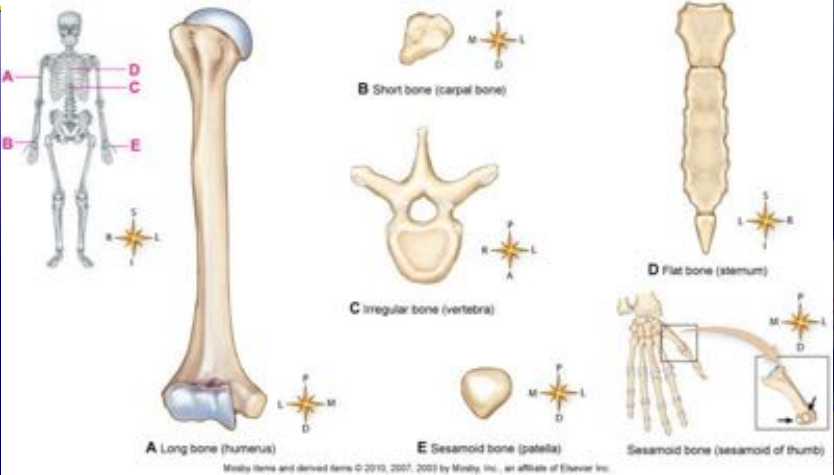


## The Skin





# The Skeletal System



**A** Long bone (humerus)


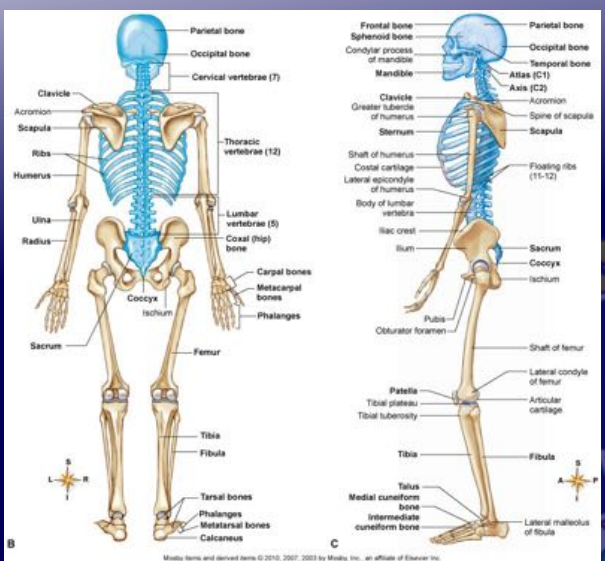
**B** Short bone (carpal bone)

**C** Irregular bone (vertebra)

**D** Flat bone (sternum)

**E** Sesamoid bone (patella)

Medley items and derived items © 2010, 2007, 2003 by Medley, Inc., an affiliate of Elsevier Inc.

**A**

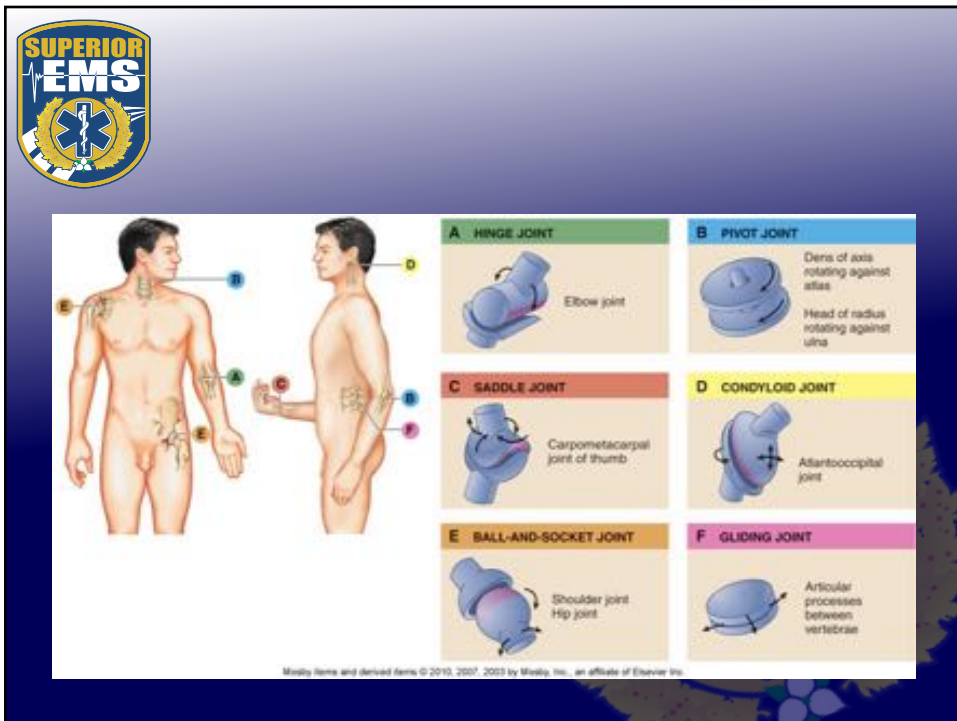
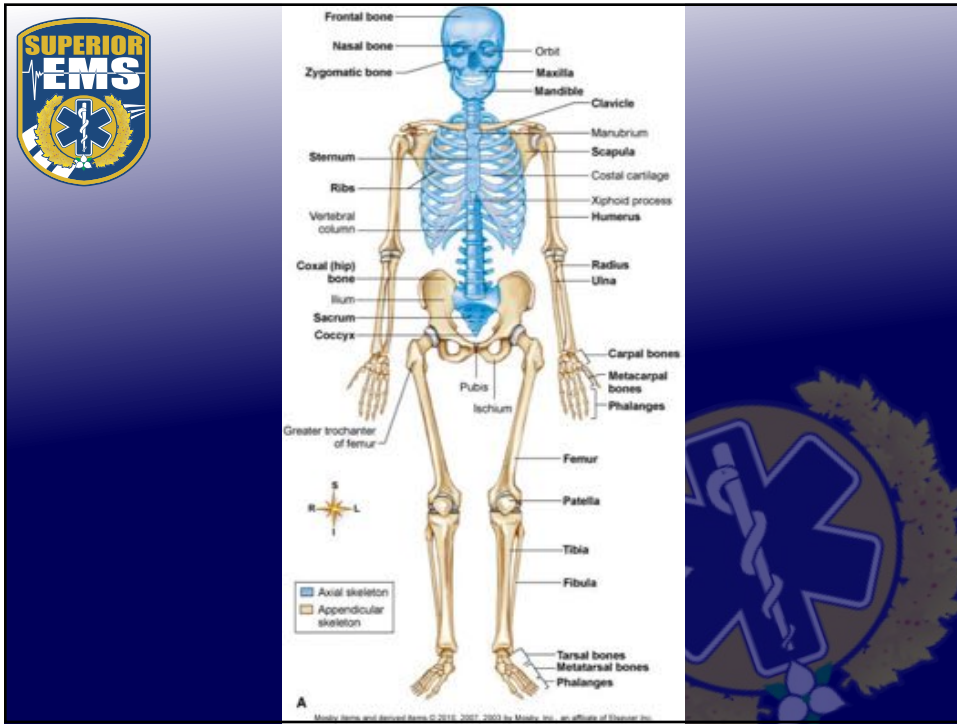
- Parietal bone
- Occipital bone
- Cervical vertebrae (7)
- Clavicle
- Acromion
- Scapula
- Ribs
- Humerus
- Ulna
- Radius
- Thoracic vertebrae (12)
- Lumbar vertebrae (5)
- Coxal (hip) bone
- Coccyx
- Ischium
- Carpal bones
- Metacarpal bones
- Phalanges
- Sacrum
- Femur
- Tibia
- Fibula
- Tarsal bones
- Phalanges
- Metatarsal bones
- Calcaneus

**B**

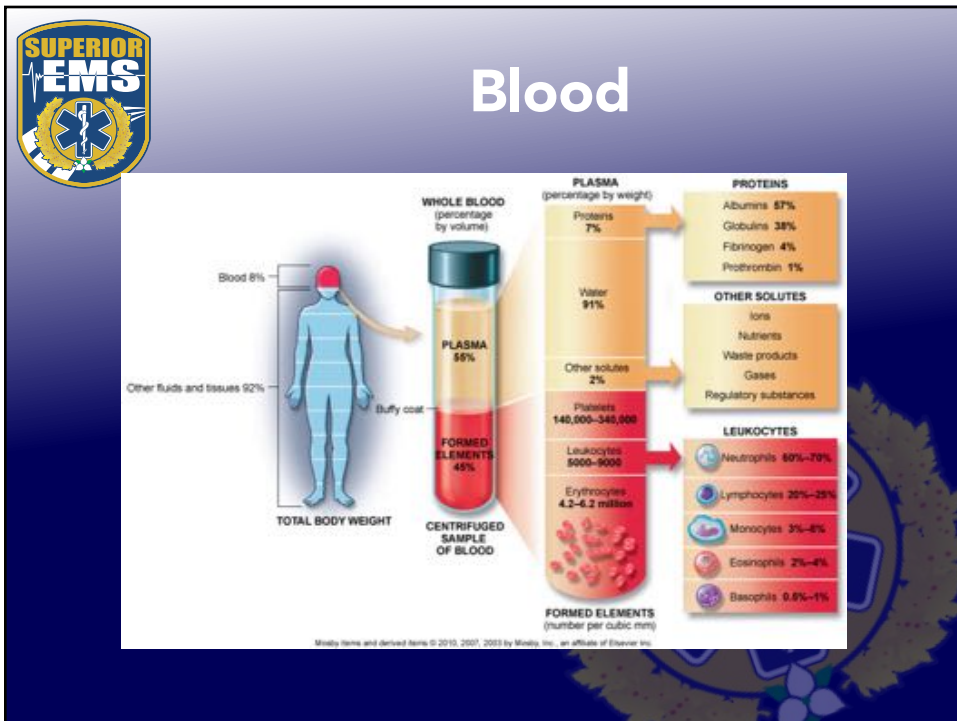
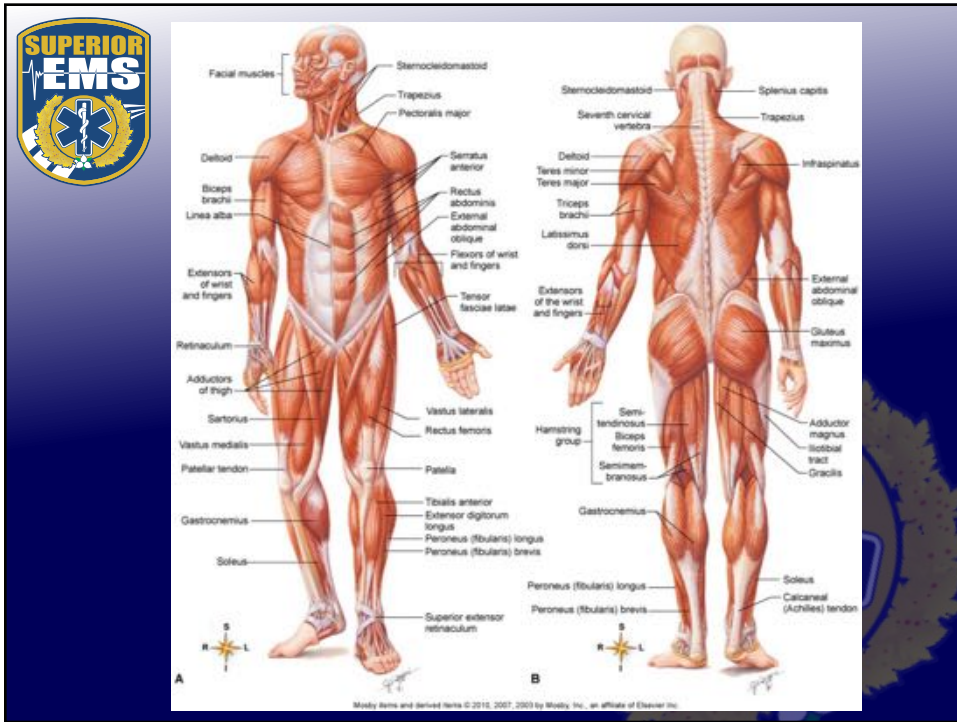
- Frontal bone
- Sphenoid bone
- Condylar process of mandible
- Mandible
- Clavicle
- Greater tubercle of humerus
- Sternum
- Shaft of humerus
- Costal cartilage
- Lateral epicondyle of humerus
- Body of lumbar vertebra
- Iliac crest
- Ilium
- Pubis
- Obturator foramen
- Shaft of femur
- Lateral condyle of femur
- Articular cartilage
- Tibia
- Fibula
- Talus
- Medial cuneiform bone
- Intermediate cuneiform bone
- Lateral malleolus of fibula
- Parietal bone
- Occipital bone
- Temporal bone
- Atlas (C1)
- Axis (C2)
- Acromion
- Spine of scapula
- Scapula
- Floating ribs (11-12)
- Sacrum
- Coccyx
- Ischium


**C**








Medley items and derived items © 2010, 2007, 2003 by Medley, Inc., an affiliate of Elsevier Inc.








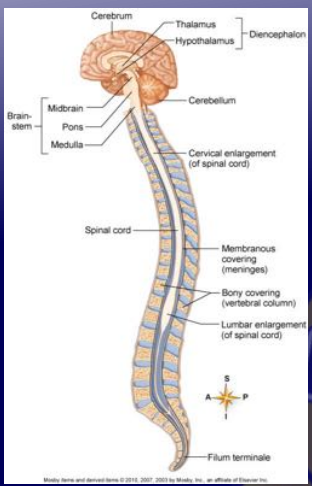


RED BLOOD CELLS (ERYTHROCYTES)	PLATELETS (THROMBOCYTES)	WHITE BLOOD CELLS (LEUKOCYTES)	
		<b>Granular leukocytes</b>	
			
			<b>Nongranular leukocytes</b>
			
			

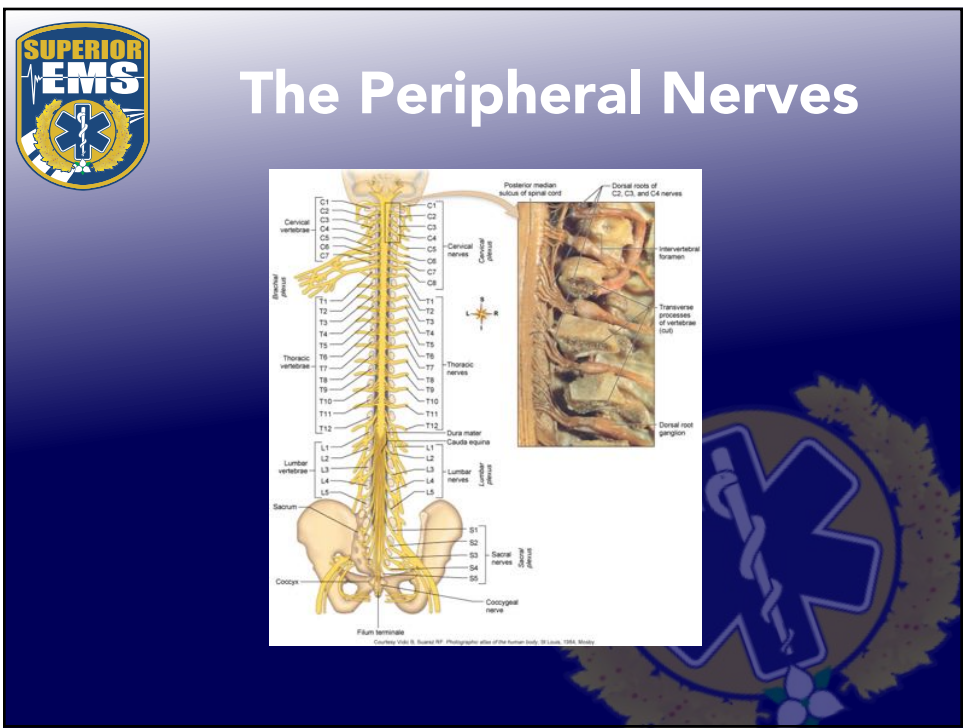
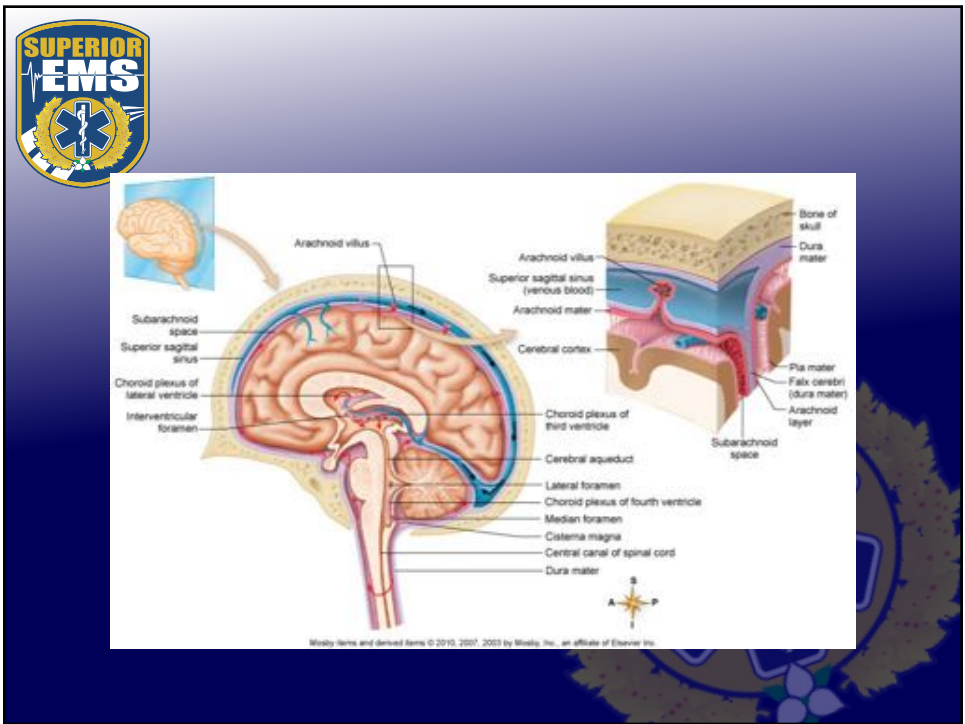
Mosby Items and derived items © 2010, 2007, 2003 by Mosby, Inc., an affiliate of Elsevier Inc.



# The Brain and Spinal Cord



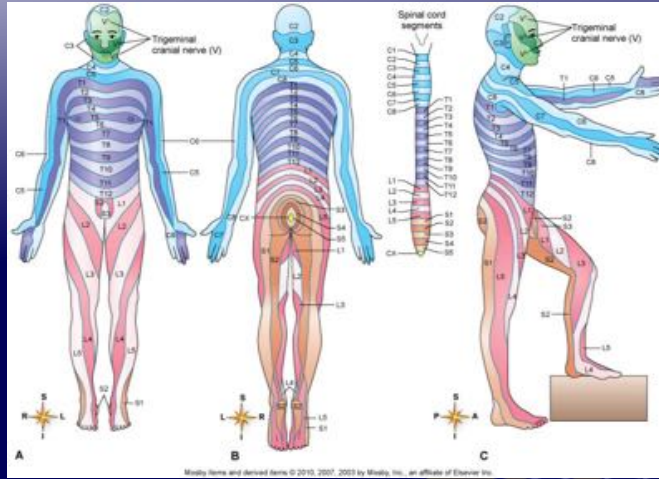
Mosby Items and derived items © 2010, 2007, 2003 by Mosby, Inc., an affiliate of Elsevier Inc.







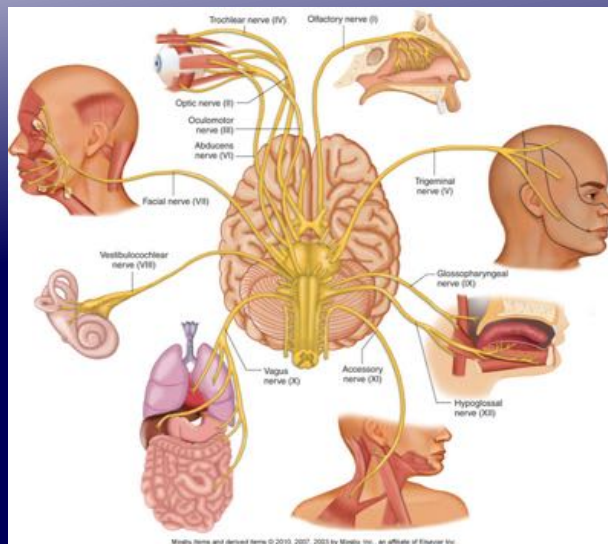
# Dermatomes



Moody Home and derived items © 2010, 2007, 2003 by Moody, Inc., an affiliate of Elsevier Inc.



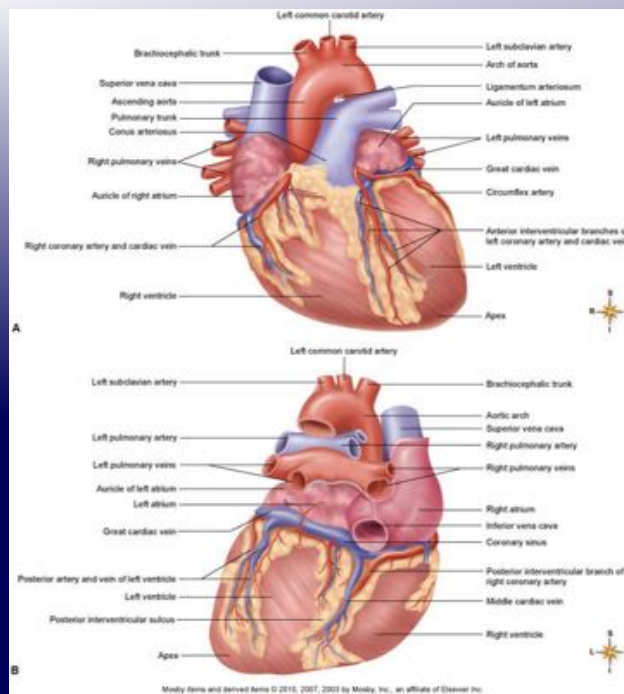
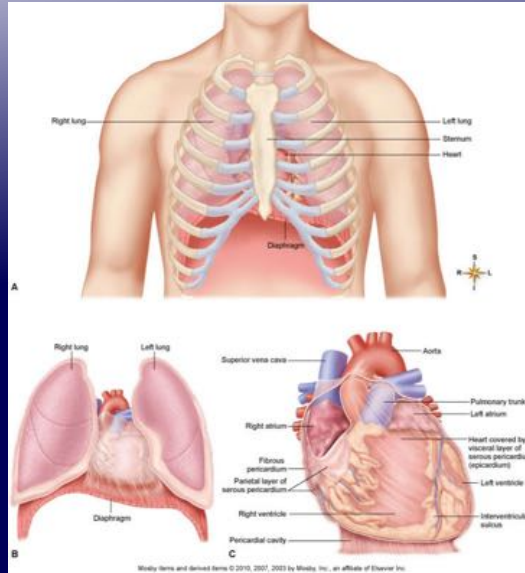
# Oh Boy, the CN's

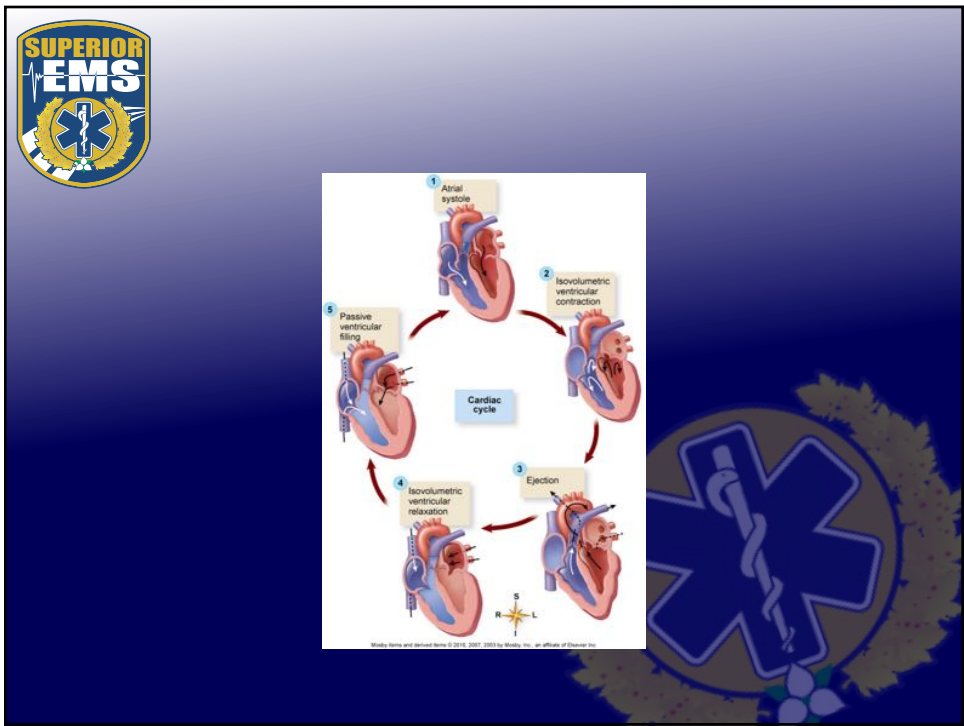
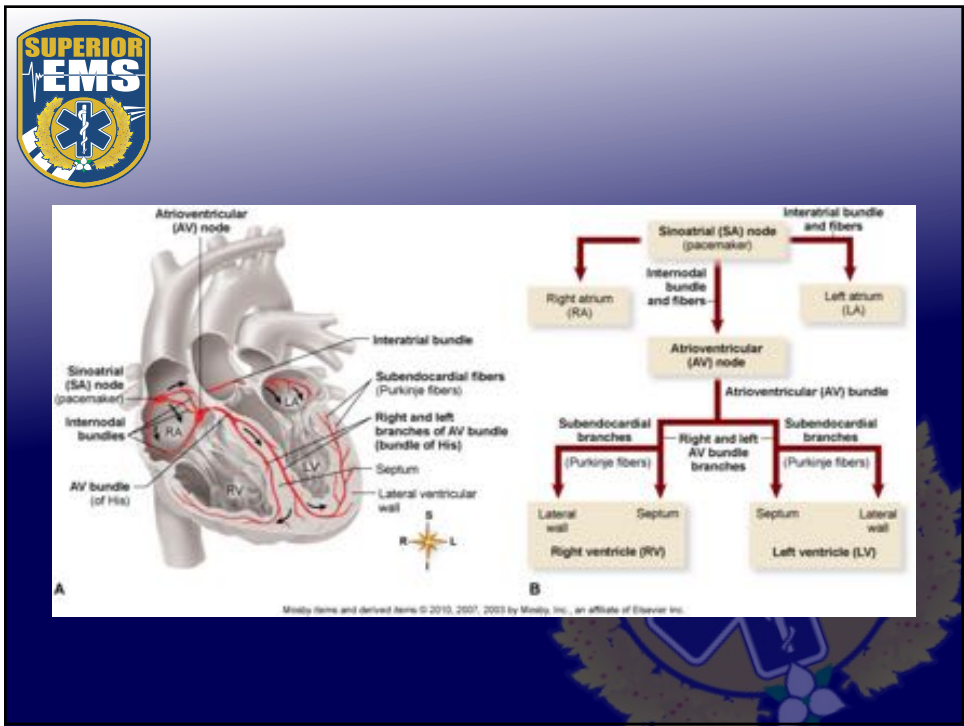


Moody Home and derived items © 2010, 2007, 2003 by Moody, Inc., an affiliate of Elsevier Inc.



# CV System







# Resp. System

