

THIS BLOCK RESERVED FOR THE CLERK OF THE SUPERIOR COURT.

Recording Statement

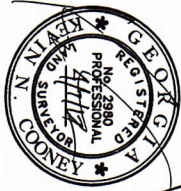
THIS PLAT IS NOT REQUIRED TO BE APPROVED BY A GOVERNING AUTHORITY, AND IS NOT SUBJECT TO GEORGIA CODE SECTION 15-6-67(b).

KEVIN COONEY - GA PL 27360

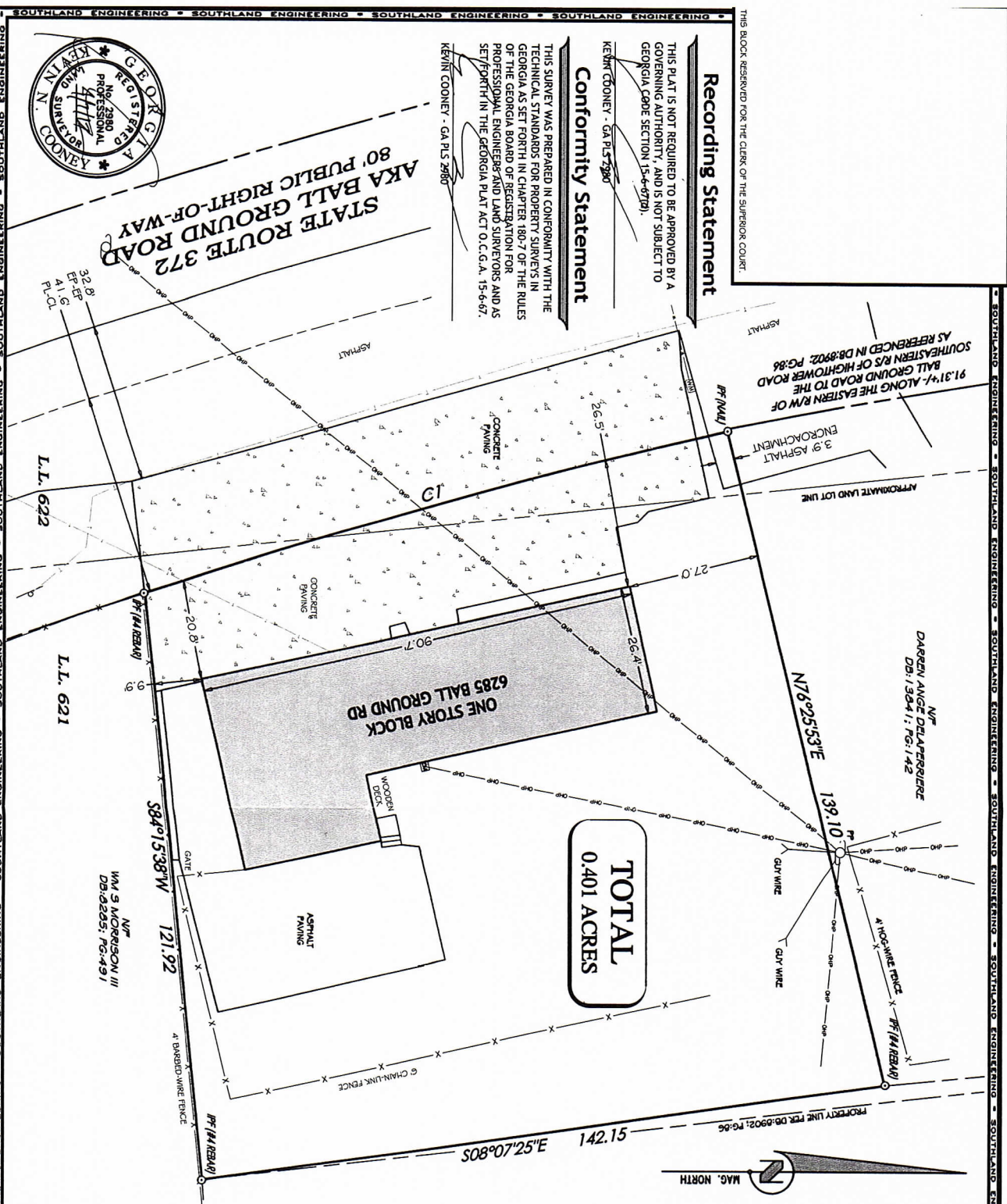
Conformity Statement

THIS SURVEY WAS PREPARED IN CONFORMITY WITH THE TECHNICAL STANDARDS FOR PROPERTY SURVEYS IN GEORGIA AS SET FORTH IN CHAPTER 180-7 OF THE RULES OF THE GEORGIA BOARD OF REGISTRATION FOR PROFESSIONAL ENGINEERS AND LAND SURVEYORS AND AS SET FORTH IN THE GEORGIA PLAT ACT O.C.G.A. 15-6-67.

KEVIN COONEY - GA PL 27360



STATE ROUTE 372
AKA BALL GROUND ROAD
80' PUBLIC RIGHT-OF-WAY



CO = CLEAN OUT	WM = WATER METER
ICV = IRRIGATION VALVE	WV = WATER VALVE
IPF = IRON PIN FOUND	L.L. = LAND LOT
IPP = IRON PIN PLACED	L.L.L. = LAND LOT LINE
OTP = OPEN TOP PIPE	PP = POWER POLE
CTP = CRIMPED TOP	-P- = POWER LINE
R/W = RIGHT OF WAY	-X- = FENCE LINE
CM = CONCRETE MONUMENT	CH. = CHORD
N/F = NOW OR FORMERLY	A or L = ARC LENGTH

JENNIFER DEPP

BOUNDARY SURVEY FOR:
LOCATED IN LAND LOT 621 & 622,
3RD DISTRICT, 2ND SECTION,
CHEROKEE COUNTY, GEORGIA
TAX PARCEL NO.: 03-0821-0002

DATE: APRIL 4, 2017
DATE OF FIELDWORK: MARCH 3, 2017
REV: JOB NO: 17014

SOUTHLAND ENGINEERING
CIVIL ENGINEERS - LAND SURVEYORS - LAND PLANNERS
11400 MILL ROAD, CAROLSBILLE, GA 30088
PH: 770.581.0400 FAX: 770.581.5151

PAUL C. SHERIFF
DB: 72246; PG: 235

SCALE: 1" = 20'
GRAPHIC SCALE

CURVE TABLE			
CI	CURVE LENGTH	RADIUS	DIRECTION
1	125.04	148.82	N13°46'38"W
2	123.00		

- ### General Notes
- ALL PROPERTY CORNERS ARE 1/2" REBAR, EXCEPT AS SHOWN.
 - THE FIELD DATA UPON WHICH THIS PLAT IS BASED HAS A CLOSURE PRECISION OF 1 IN 142,842 FEET, AND AN ANGULAR ERROR OF 1 PER ANGLE POINT, AND WAS NOT ADJUSTED.
 - THIS PLAT HAS BEEN CALCULATED FOR CLOSURE AND IS FOUND TO BE ACCURATE WITHIN 1 IN 116,325 FEET.
 - EQUIPMENT USED: TOPCON 3005W, TOTAL STATION, WITH DATA COLLECTOR.
 - RIGHTS OF WAY ARE BASED UPON PINS FOUND AND/OR CENTERLINES OF PATHS OF TRAVEL.