



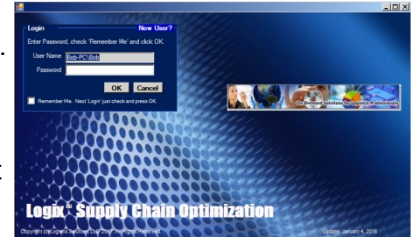
## Supply Chain Optimization and Distribution Network Design

### Log In

Logix is available On-Demand at [www.logistixsolutions.com](http://www.logistixsolutions.com). Simply download Logix from the website and follow the Installation Instructions.

From the entry screen, enter the password you've been provided and click on ☐ Remember Me. Press **OK**


From the next "Welcome" screen, click on **Next** and select **Demo** to get started.

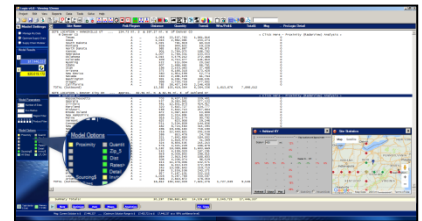


### View the Data

Logix displays the Demo for a simple distribution problem including demand data for a single product in cities throughout the United States and distribution centers in 16 major transportation hubs.

Return to this view anytime by clicking the Show Data Listing icon 

View all of your data and click on any site and press  to view details or to modify and save the data.

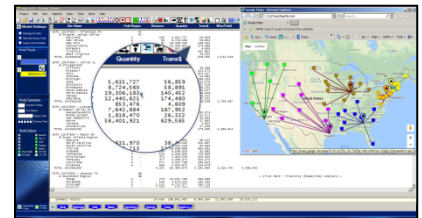


### Optimize Your Supply Chain

Logix lets you choose distribution models that optimize customer service, sourcing, distribution network design and supply chain costs.

Enter the Number of Sites you want in the solution or leave this blank and let Logix decide the number and location of distribution centers in the optimum solution.

Click on any distribution model icon to optimize or simulate a solution.

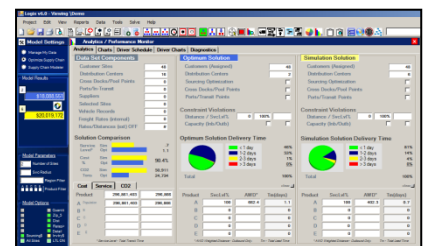


Logix displays all transportation, inventory, warehousing and product costs, as well as total cost for each distribution center in the solution.


### Display Maps

Logix displays maps of your solution so you can visualize your entire supply chain and distribution network for each solution.

Press the Map icon  to display maps of the entire solution and even change the image to show roads, buildings and highways.



### Display Results

Press the Analytics icon  to view a variety of performance metrics associated with the current Optimum and Simulation Solutions such as service metrics and cost per shipment.

Display solutions side-by-side and compare various models for better service, lower cost, improved delivery times or lower capital expense for facilities, vehicles, personnel or equipment.

Print the solution using the Print Preview icon  or Save your data.

