

St Johns Granary

St. Johns, Michigan



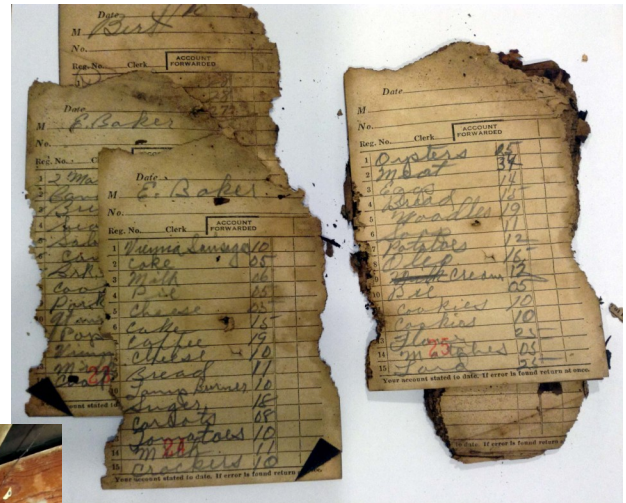
The Past: Built circa 1900, the St. Johns granary was originally located on the Stewart Farm. During its heyday, the farm produced alfalfa, corn and soybeans. A part of the farm's history included being a training ground for small aircraft pilots; most likely during WWII. The granary was a two story building with built in wooden grain chutes for dispensing grain from the upper floor to grain sacks on the lower floor. Neighboring buildings included the family farmhouse and a large chicken coop with corrugated roofing.



The Present and Future: The passage of time has taken its toll on the Stewart Farm buildings. The granary, the chicken coop and the original farmhouse have been cleared to make way for more crop planting acreage. St. Johns Granary will live on piece by piece in future reclaimed barn wood projects.

Barn Facts:

- Barn size was 18'x 24'
- Red siding milled using German lap tongue and groove technique.
- The granary was encased with two layers of barn siding.
- Grain stalls located on bottom floor.
- Grain chutes were for dispensing grain into feed sacks.



Grocery receipts found in granary.



Grain chute with stop/go paddle board



Wooden Stair case to top loft

