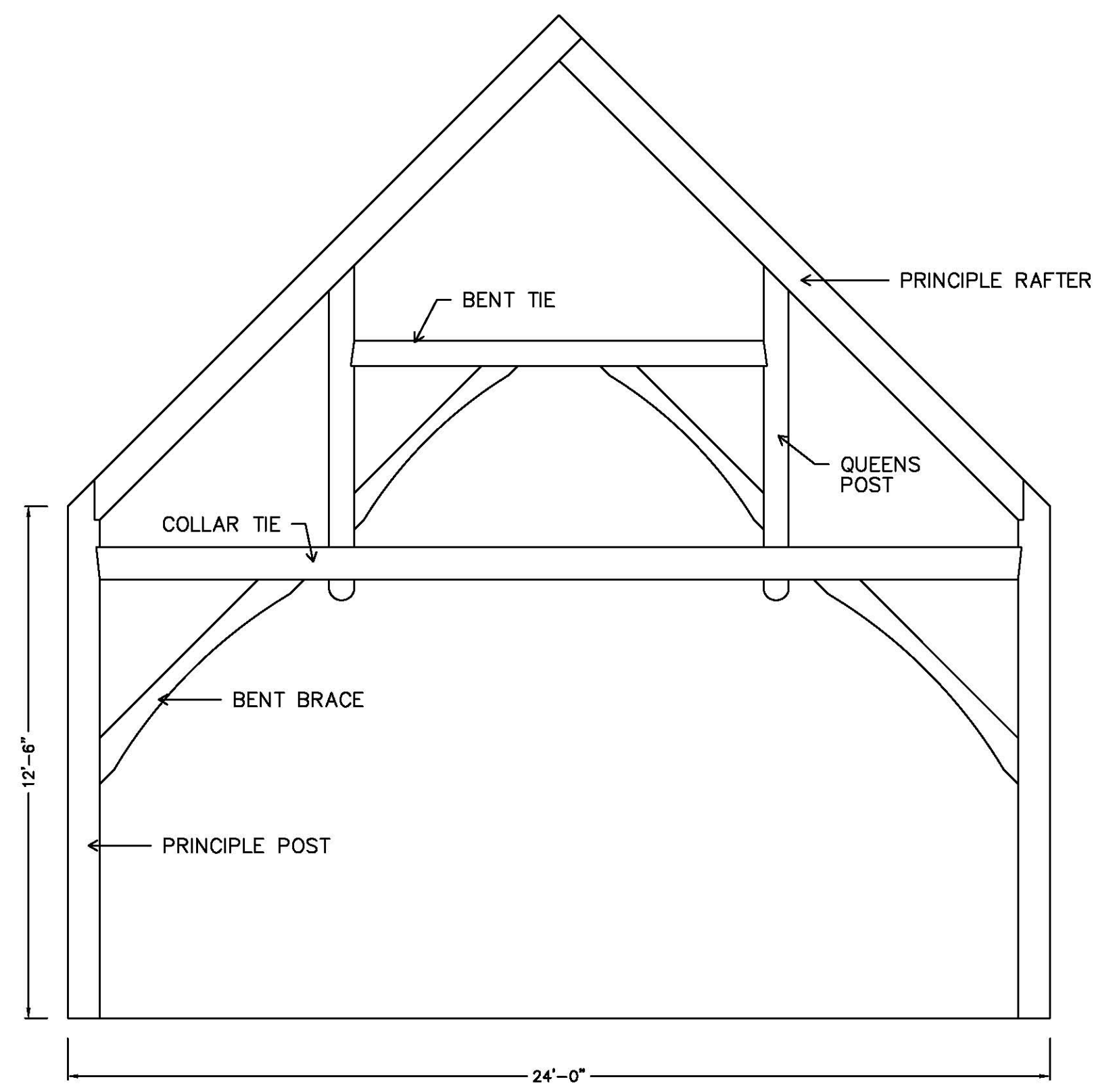
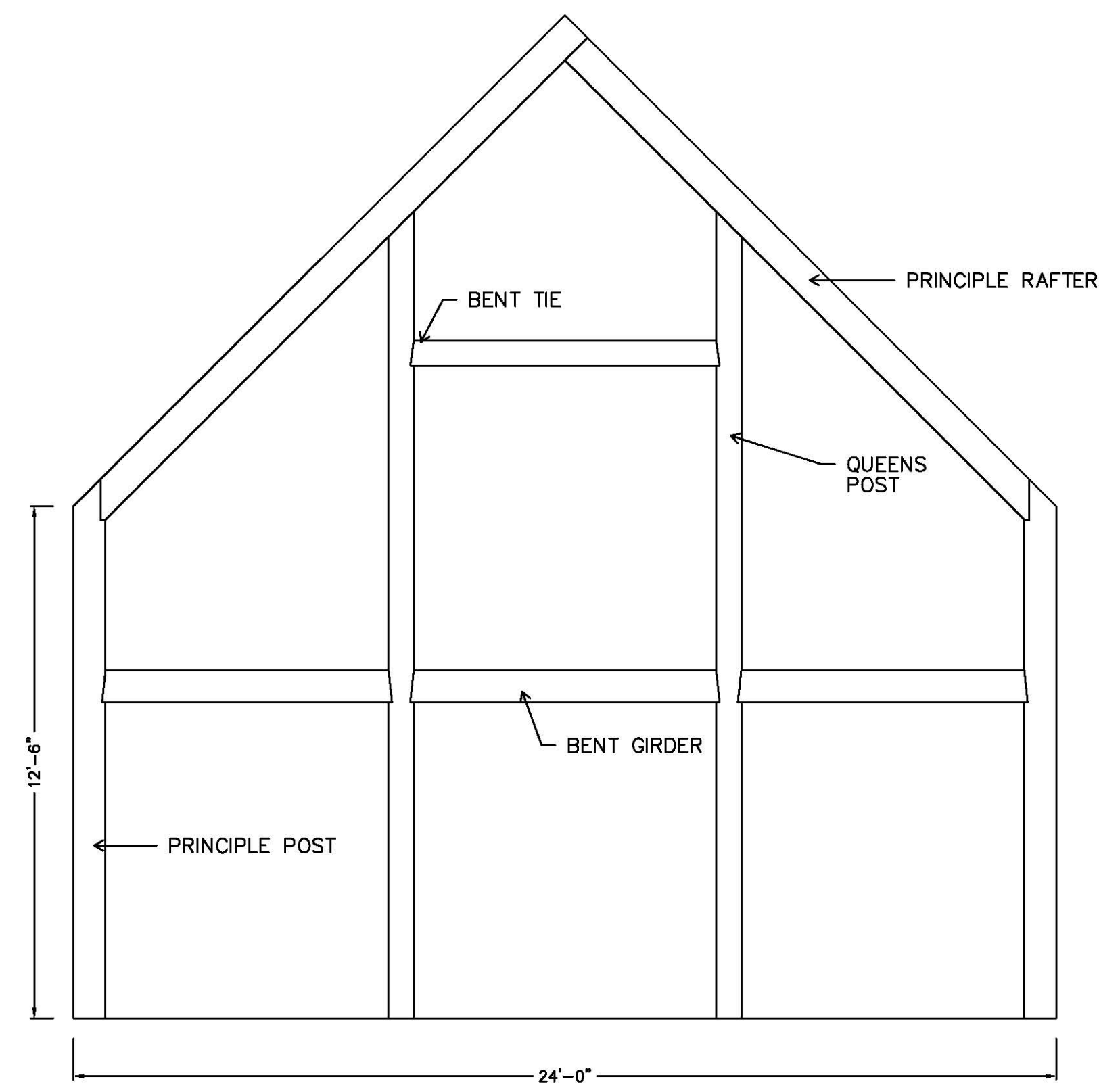


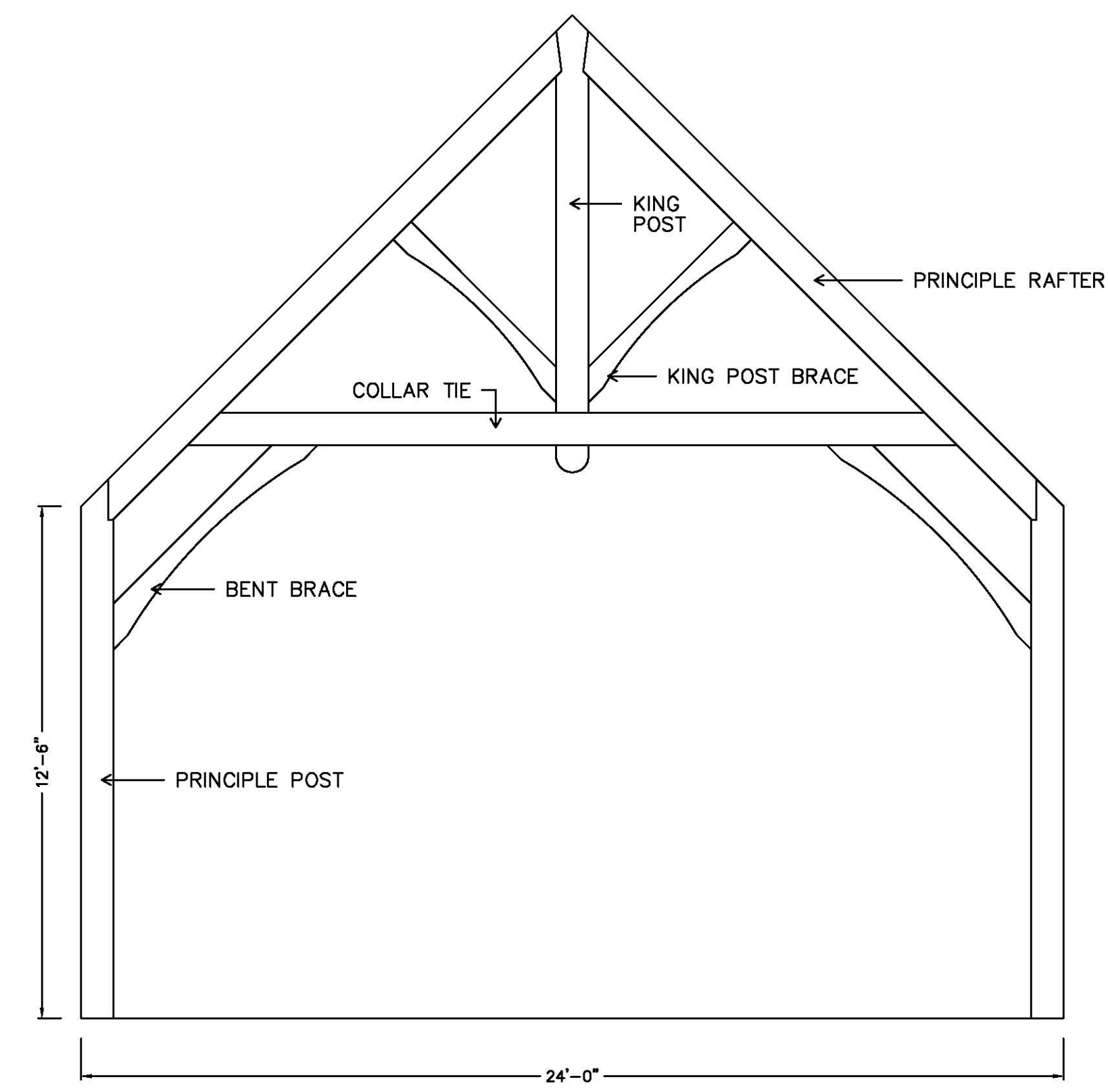
HAMMER BEAM TRUSS FOR A CATHEDRAL CEILING GREAT ROOM



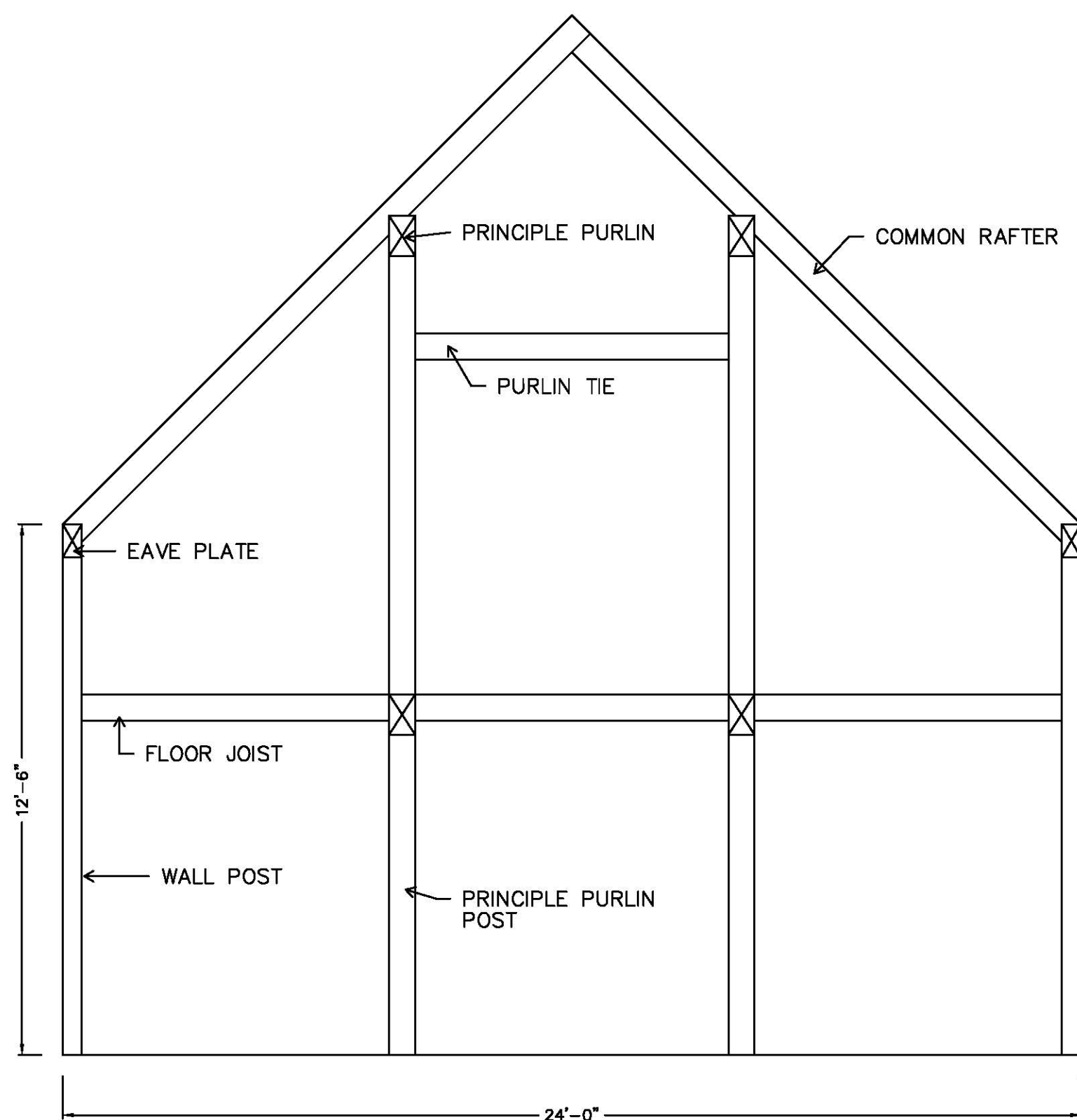
QUEENS POST TRUSS FOR A CATHEDRAL CEILING GREAT ROOM



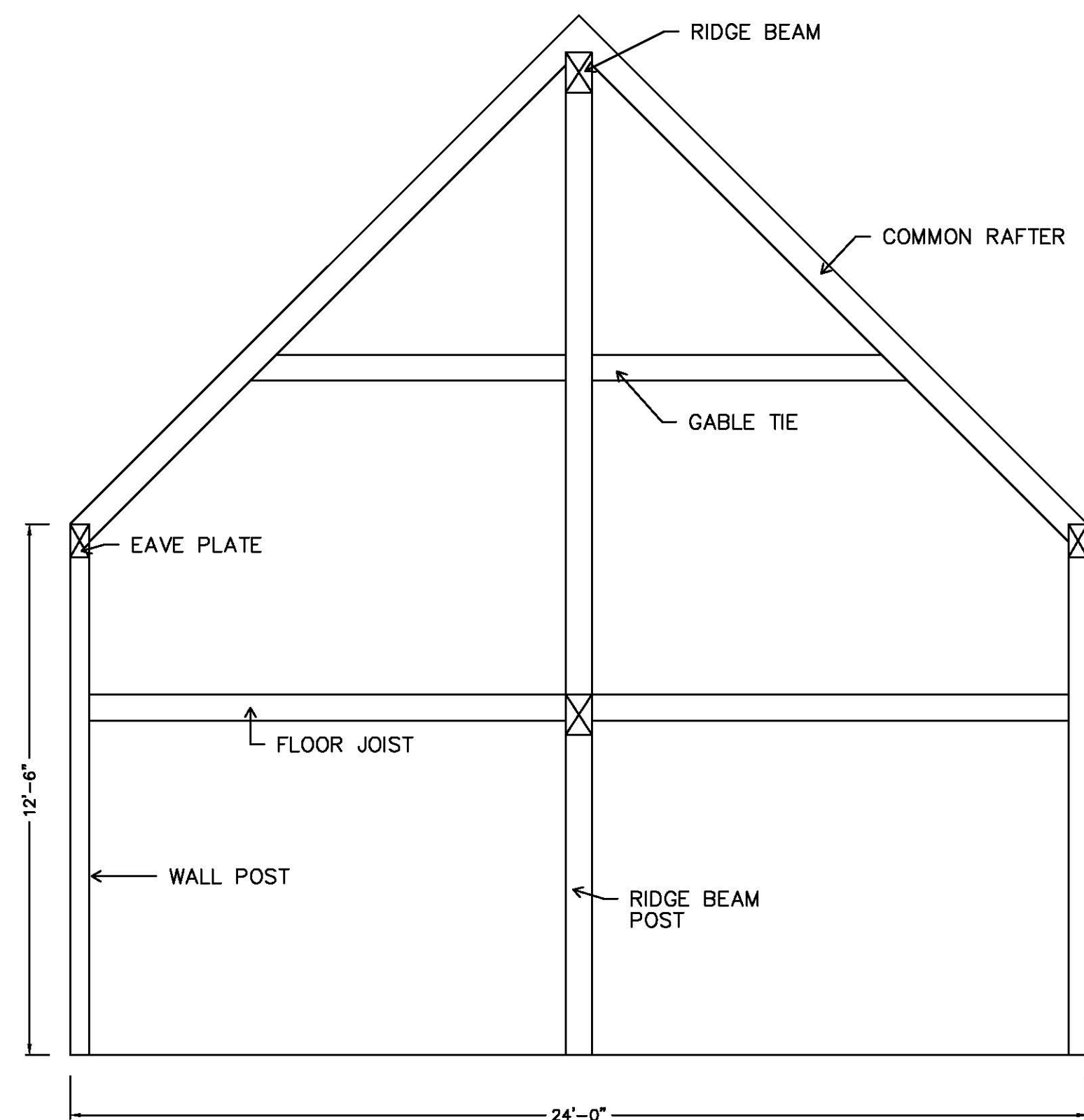
QUEENS POST TRUSS WITH A SECOND FLOOR



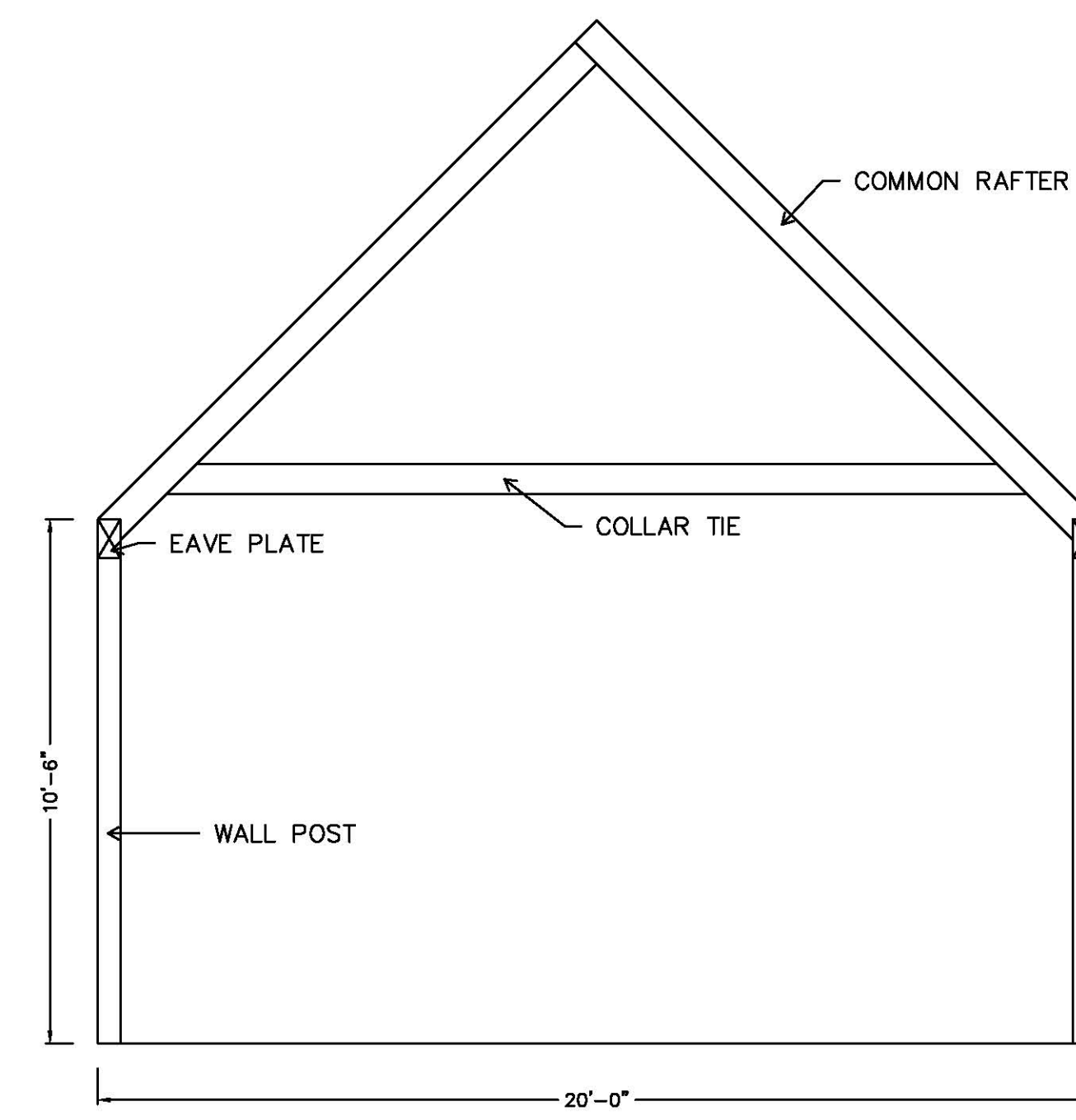
KING POST TRUSS FOR A CATHEDRAL CEILING GREAT ROOM



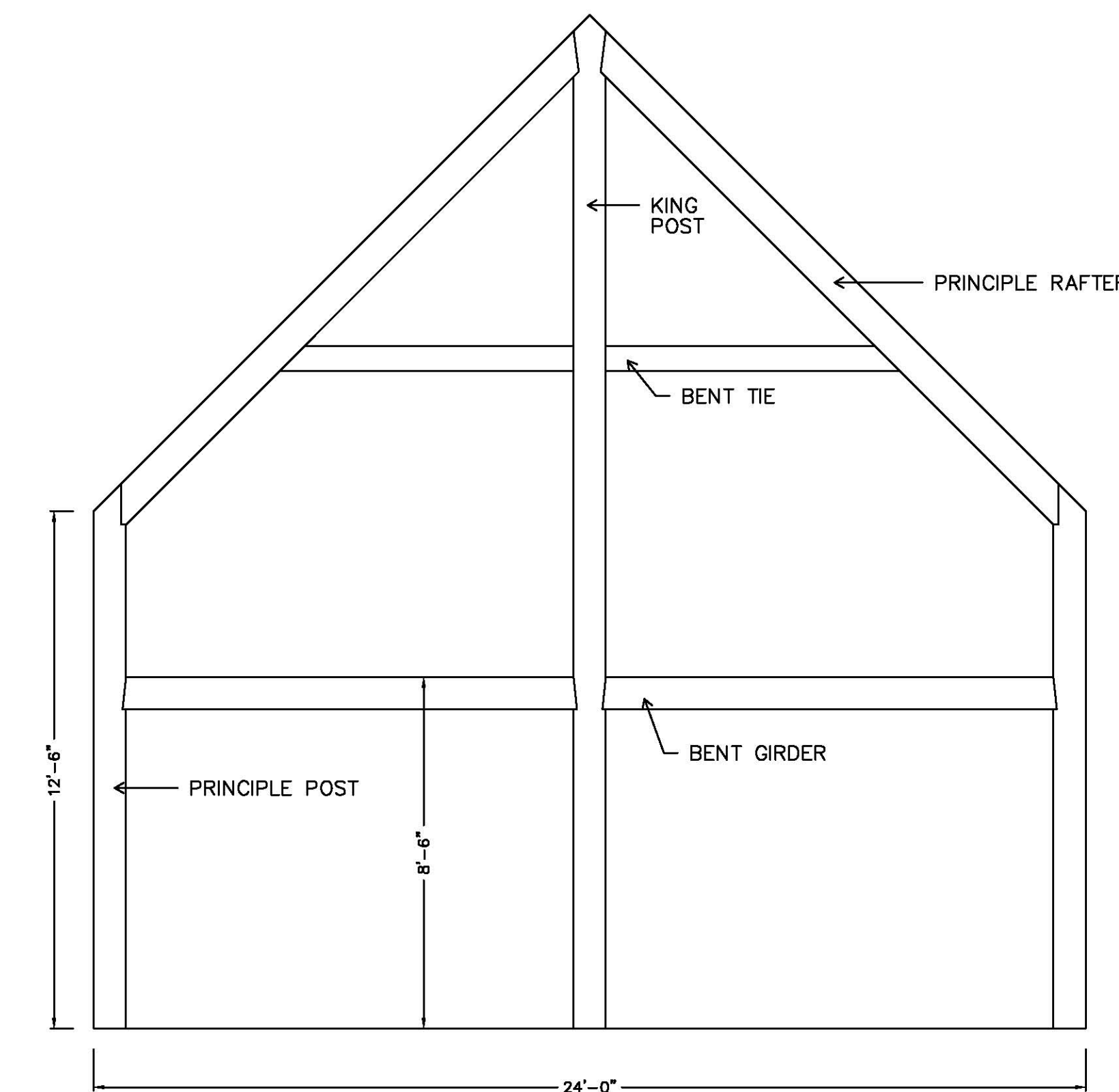
PRINCIPLE PURLIN/Common RAFTER



RIDGE BEAM/Common RAFTER



COMMON RAFTER/COLLAR TIE



KING POST TRUSS WITH A SECOND FLOOR