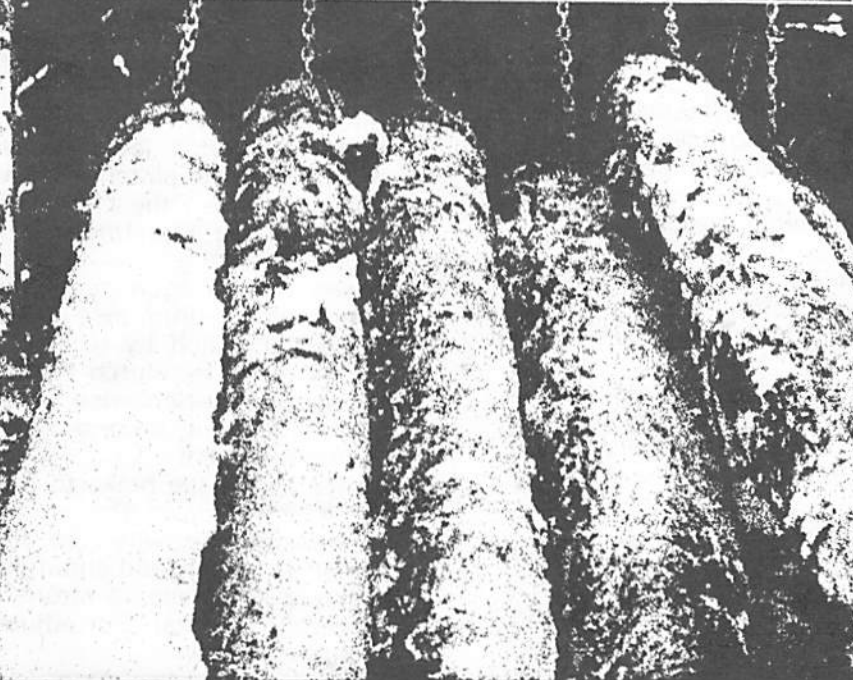
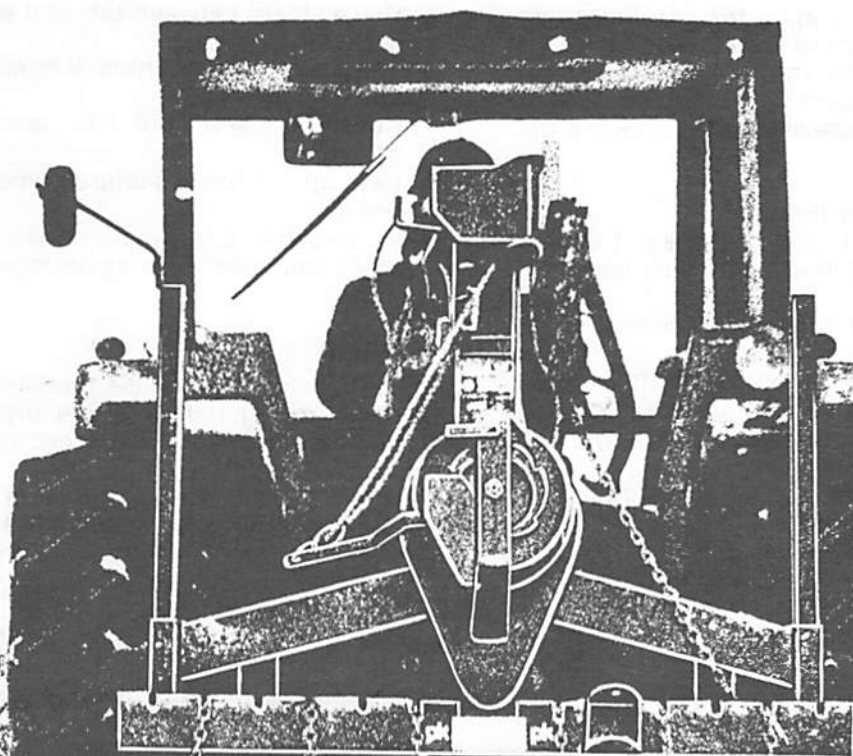


Normet sa.: NORMET S.A. 32, rue de Cambrai 75019 PARIS,
France, tel. 01-2003350, Telex 670791 f

Factory: 74510 Peltosalmi, Finland, Tel. 977-22241,
Telex 4418 Farmi SF



FARMI SKIDDING WINCH JL 303

Mounting
Service
Operation
Spare parts

Skidding winch JL 303

Please read the instructions carefully and follow the safety regulations.

MOUNTING

The winch can be mounted to the 3-point linkage of any tractor.

1. Fix winch top link arm to the top link point of the tractor. Lock the top link point if it is connected with the tractor's hydraulic lift system, before mounting the top link arm. Separate brackets are available. Lock the pin with the lynch pin.
2. Fix the lower links.
3. Fix the top links to the winch.
4. Fix the drive shaft to the tractor's P.T.O. and lock it. Check that the drive shaft length is correct.
5. Fix the drive shaft to the sprocket shaft of the winch and lock it.
6. Lift the winch until the drive shaft is in an approximately horizontal position. Pull out the supporting legs and secure the legs with their pins.
7. Lower the winch so that it is standing with the legs on the ground.
8. Adjust the top link arm to such a length that the drum axle is lying horizontally.
Note: If the drum is towards the tractor, it will lie on the clutch plate and will not revolve freely when pulling out the rope.
9. Lift up first the winch and then the supporting legs.

INSTRUCTIONS

Before running the winch check:

1. The wire
 - that it is firmly and properly fastened,
 - that it is faultless (breaking risk),
 - that the wire clamps' guard pipe is in its place,
 - that its length is suitable, avoid using too long a wire.
2. The machine fastening
 - that all the pins and spindles are in place,
 - that the tension of the lower links' side chains is correct,
 - that the tractor's top link point is locked (with a separate bracket, if necessary).
3. The drive shaft
 - that its length is right and that it is correctly fastened,
 - that the guard is fastened.
4. Chain tightening, drum brake and latch brake, see Service Instructions.
5. The clutch must be correctly adjusted and lubricated. Check that the return spring disconnects the clutch.

USE

1. The tractor's correct placing:
Choose as even a hauling route as possible. Avoid steep slopes, especially when winching from the side. Check that the supporting legs are firmly on the ground and locked. Also, that the log haulage way is clear and that the tractor's brake is on.
2. The driver's safest place is obliquely backwards from the winch, where the visibility is good.

The assistant's safest place is behind the load.

- Do not allow any outsiders near the working area.
3. Engage and disengage the clutch gradually.
 - Avoid an unnecessarily strong pull, to avoid upsetting the tractor.
 - Adjust the inwinching speed according to the circumstances. Upsetting the tractor.
 - Use a shield between the seat and the winch (e.g. safety cab).
 - Use the lower snatchblock in main wire skidding.
 - Keep the tractor's P.T.O. uncoupled when driving.
 - Use agreed hand gestures when working in groups.
 - When starting to winch, unwind the wire entirely and wind it up again together with the load.

SERVICE

Servicing is easy, because the wire drum, main sprocket and snatchblock are fitted with self-lubricating bearings. There are only 4 points requiring lubrication:

1. The 2 grease nipples, picture number 42,
Put in good quality vaseline at the beginning of every work period, thus the drive axle bearings and the snatchblock guard bearing will be greased.
2. Oil the roll chain once a day, but take care that the clutch linings do not get oiled.
3. Grease the rollers with vaseline at least once every work period.
4. Oil the latch axle through the hole on the bearing socket.

OTHER PERIODICAL SERVICES

1. Clutch adjustment
Adjust the clutch lever always to such a position that the clutch grips well, but also frees itself when the clutch lever is not in use. Make the adjustment in the following way:
 - a) Loosen the hexagon screws, key distance 36 mm, on the drum axle ends.
 - b) Adjust the clutch by turning the axle, key-size 14 mm. The clutch loosens clockwise, tightens counterclockwise.
 - c) After adjustment, retighten the screws.
2. Brake adjustment
Always adjust the brake to such a position that it slows down the drum lightly while pulling out the wire, so that the drum cannot turn freely and entangle the wire, but it should not brake so strongly that pulling the wire is difficult. For adjusting, use the hexagonal screw.
3. Tightening the roller chain
Adjust by moving the chain tightener in the following way:
 - a) Loosen the 2 hexagonal screws, keysize 17 mm, which lock the chain tightener, keysize 19 mm.
 - b) Move the tightener towards the chain until the chain is suitably tight.
 - c) Retighten the screws.When ordering spare parts, please refer to your machine's type mark on the name plate and to the Spare Part List's order (not picture) number. For example: JL 303, part 3073004

Spare part list JL 303

Picture no.	Part no.	Description	Pcs
1	9461301	Clutch lever spring	1
2	5454205	Thrust bearing 51109	2
3	5482001	Roller chain 5/8"x83 loops	1
4	4072079	Pulley + ring ø 40	1
5	5240101	Grease nipple R 1/8"	1
6	5281321	Cotter pin ø 6x40	3
7	4066023	Roller	3
8	5456205	Glider bearing Glissa ø 45/55x45	3
9	5451111	Pulley bearing 6305 2 Z	1
10	5451130	Pulley bearing 6007 Z	2
11	5223006	Snap ring 35x2,5	1
12	5482004	Chain link 5/8"	1
13	5206024	Hexagonal screw M 10x35	2
14	5200815	Fastening screw	1
15	5482413	Rope	1
16	5206022	Hexagonal bolt M 10x25	4
17	5211110	Hexagon nut M 24 SFS 2068	2
18	5220004	Washer ø 10	4
19	5283001	Brake rivet 1/4"x3/4"	6
20	5206011	Hexagonal bolt M 8x16	1
21	8282202	Stabilizer pin	1
22	1073001	Frame	1
23	2073008	Drum guard and cover	1
24	0073034	Lever	1
25	3073006	Clutch half	1
26	3073004	Axle	1
27	3056140	Stabilizer	1
28	3058219	Snatchblock guard	1
29	3058160	Wire drum	1
30	9460101	Brake spring	1
31	9282015	Snatchblock pin	1
32	8282201	Stabilizer pin	1
33	4073038	Clutch pads	1
34	4056218	Drive shaft	1
35	3073005	Clutch half	1
36	4058215	Latch	1
37	4058012	Chain tightener	1
38	4058017	Spring fastener plate	1
39	4058018	Latch spindle	1
40	4044411	Nylon plug	1
41	4058216	Upper snatchblock	1
42	9461101	Latch spring	1
43	0073077	Main sprocket	1
44	5221404	Star washer ø 8	1
45	2073068	Main sprocket compl. parts: 43, 33, 19, 8	1
46	5284215	Ring pin ø 10	2
47	9282018	Link pin	2
48	4029379	Link pin sleeve	2
49	4088005	Lower snatchblock	1
50	9282021	Snatchblock pin	1
51	4072062	Block + ring ø 35	1
52	5451121	Bearing SKF 6206 Z	2
53	2088001	Lower snatchblock guard	1
54	9282007	Snatchblock guard pin	1
55	2088000	Lower snatchblock, assembly	1
56	9282089	Lower link, compl.	2
57	5482412	Latch rope	1
58	9463501	Spring	1
59	4058210	Distance sleeve	2
60	5223112	Circlip	1

JL 303
1073079

