

SKID-STEER WOODCHIPPER VALBY CH 140 HMD

HOOKUP OF THE CH 140 HMD

The chipper is delivered without quick coupes on the hoses. You must install quick couplers to match the ones on the skid-steer. Quick couplers are often a reason for the oil heating so if the chipper will be permanently mounted to the skid-steer you might want to consider a hook up without quick couplers.

The hose that goes to the valve which is pictured below is the input pressure hose.

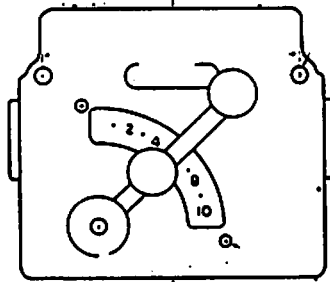
The return oil comes from the hose which comes from the motor.

TRYING OUT THE CH 140 HMD

Start out by setting the flow control lever on 2.

Start the Skid-Steer loader and engage the oil flow to the chipper when the engine is running on an idle. You should hear the chipper disk is turning and by moving the control bar on top of the feed chute you should be able to start and stop the power feed roller. (If the disk is not turning stop the engine and check for trouble.)

Increase the engine speed slowly to wide open. The disk should now turn at a substantial speed.



Move the flow control lever so that the power feed roller turns around once every three to four seconds. The feed roller will turn slower when you move the lever toward 0 and faster when you move it toward 10. Moving the lever will also influence the turning speed of the chipper disk. Moving the lever toward 10 will increase the power feed roller and at the same time slow down the chipper disk. At the setting 10 all oil will go to the power feed rollers and the chipper disk will not turn at all.

OVERHEATING OIL

Prolonged use of the chipper will heat up the oil. The skid-steer must be equipped with an oil cooler.

THE LAST PIECE

It is important to clean out the space between the feed roller and the knives before shutting down the chipper. (If there is material touching the knives the disk will not start up again.) To clean out the feed chute: Run the last piece trough so that the chipper starts chipping on it, then reverse the rollers and back it out.

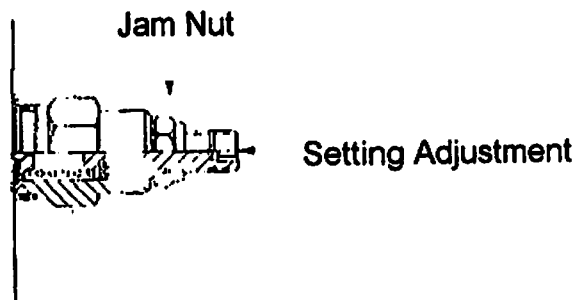
AUTOMATIC FEED SPEED CONTROL

The Valby Skid Steer Chipper automatically adjusts the feed speed of the chipper so that the chipper will not stall and plug up. If the cutting disk slows down due to large tree size, then the feed will also automatically slow down or stop until the speed of the cutting disk is back to operating speed.

ADJUSTING THE SPEED CONTROL

The automatic speed control is adjusted from valve # 2 (2729) If the Skid Steer Loader has hydraulic pressure over 2000 psi, there is no need to change the factory settings. If the hydraulic pressure from the Skid Steer is under 2000psi then there is risk for stalling the chipper. One can in that case adjust the settings as follows:

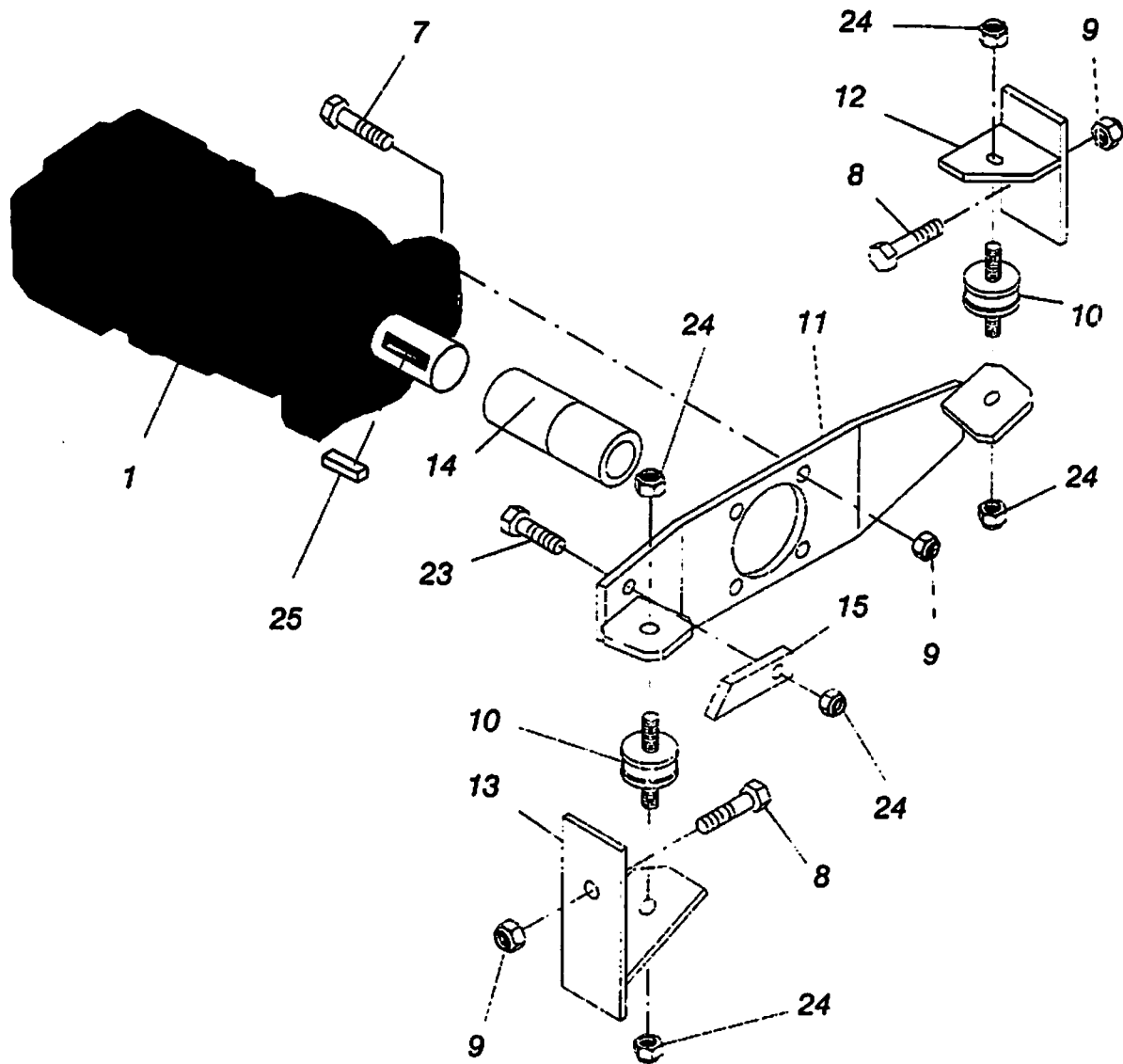
- 1) Loosen the jam nut .
- 2) Use a 5/32" allen wrench to turn the setting 1/4 turn counter clockwise.
- 3) Tighten the jam nut.



Spare parts

CH140 Hydraulic motor drive

03510700



Spare parts

CH140 Hydraulic motor drive

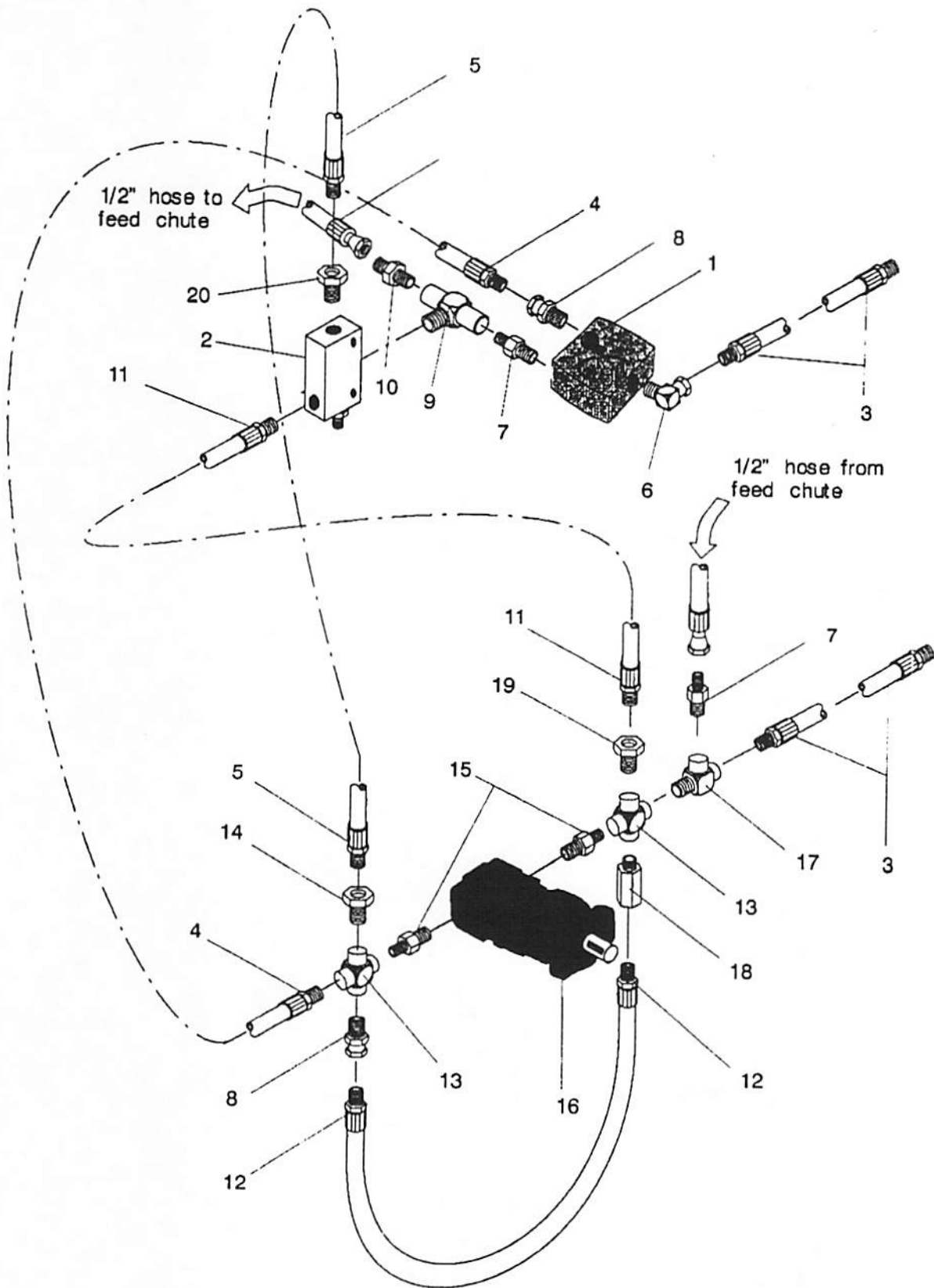
03510700

Part	Order no.	Description	Remarks	Qty.
1.	2810	Hydraulic motor		1
2.	-			
3.	-			
4.	-			
5.	-			
6.	-			
7.	52062031	Bolt	M12x40 DIN933 8.8Zn	4
8.	52062023	Bolt	M12x30 DIN933 8.8Zn	2
9.	52117124	Lock nut	M12 DIN985 8.8Zn	14
10.	54923073	Damper	17/1388 1MN60	2
11.	43510640	Motor support		1
12.	43510620	Support, left		1
13.	43510630	Support, right		1
14.	43510590	Coupling bushing		1
15.	43510540	Limiter	10x25	1
16.	-			
17.	-			
18.	-			
19.	-			
20.	-			
21.	-			
22.	-			
23.	52060225	Bolt	M10x25 DIN933 8.8Zn	1
24.	52117108	Lock nut	M10 DIN985	5
25.		Parallel key	32x10x7	1

Spare parts

CH140 Hydraulic motor drive

03510700



Spare parts

CH140 Hydraulic motor drive

03510700

Part	Order no.	Description	Remarks	Qty.
1.	2730	Adjustable flow control valve		1
2.	2729	Valve		1
3.	0348	Hose		2
4.	0330	Hose		1
5.	0416	Hose		1
6.	2235	Angle swivel		1
7.	2124	Nipple		2
8.	2237	Straight swivel		1
9.	2327	Tee		1
10. ...	2123	Nipple		1
11. ...	0918	Hose		1
12. ...	0318	Hose		1
13. ...	2430	Female cross		2
14. ...	2132	pipe reducer bushing		1
15. ...	2112	Adaptor		2
16. ...	2810	Motor		1
17. ...	2334	Service tee		1
18. ...	2737	Check valve		1
19. ...	2167	Pipe bushing		1
20. ...	2122	Pipe bushing		1

Spare parts

Hydraulic feed chute

03341773

Part	Order no.	Description	Remarks	Qty.
40	52060159	Screw	M8 x 50 DIN 933	2
41	52200037	Washer	M8 DIN 126	2
42	52060092	Screw	M8 x 45 DIN 931	1
43	52063427	Screw	M8 x 35 DIN 933	1
44	56001035	Hydraulic motor	White HS24	1
45	-			
46	56050156	Valve (open)	HDM140 KO2-15VM-A02-L00	1
48	52432051	Double nipple	R1/2 - R 1/2	2
49	-			
50	52432010	Double nipple	R3/8-R1/2	4
51	52390556	Ring	U17,4 x 24,0 x 1,5	4
52	-			
53	-			
54	-			
55	56526098	Hose assy.	K1/2" S l=0,7m	2
56	56526270	Hose assy.	K1/2" S l=2,2m	1
57	-			
58	-			
59	52357605	Seal		1
60	56524275	Hose assy.	S1/2" S l=2,2m	1
61	-			
62	52357902	Seal unit	White 24	1
63	-			
64	43342435	Lock		1

() = optional

