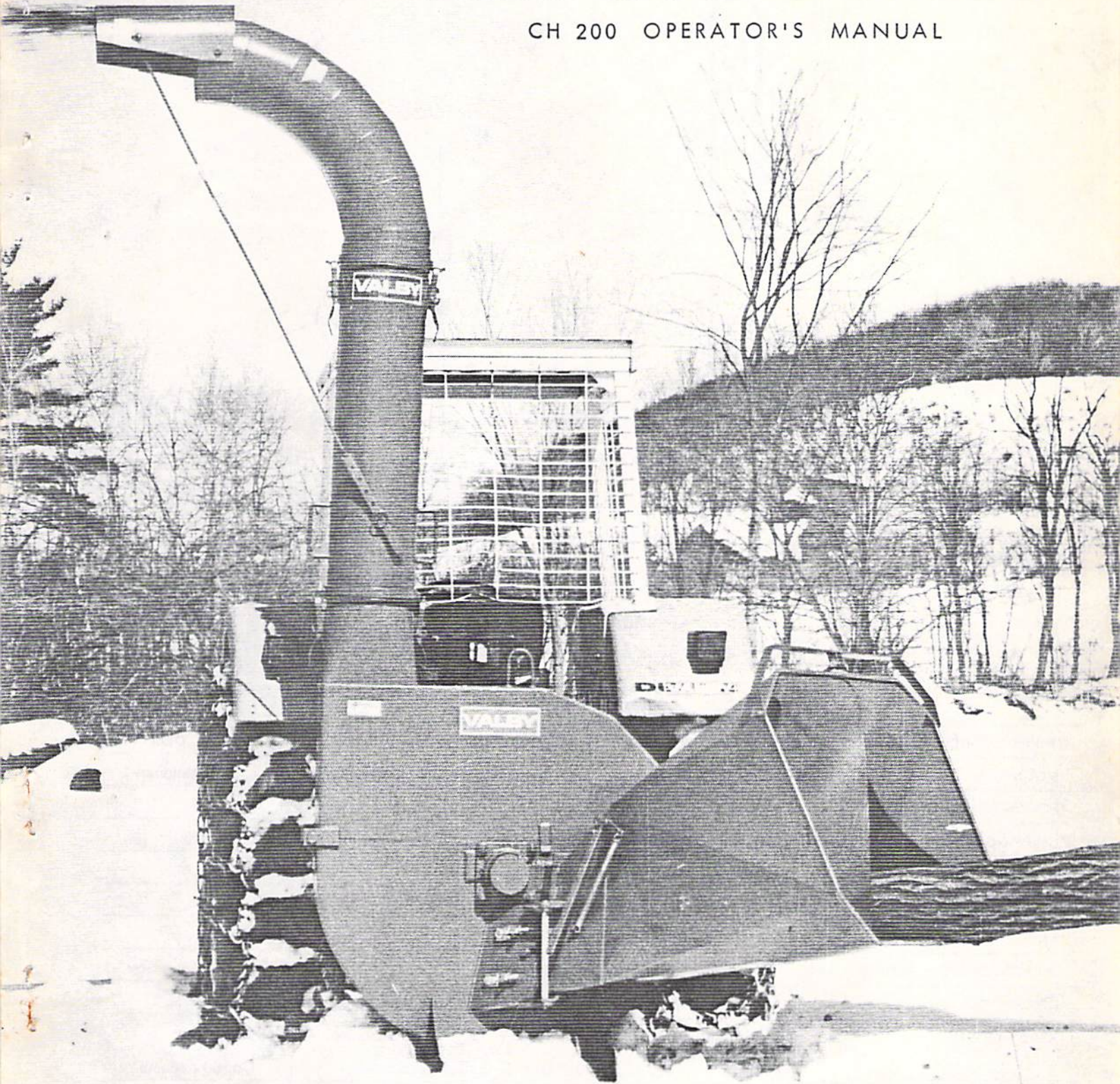


VALBY WOODCHIPPERS

CH 200 OPERATOR'S MANUAL

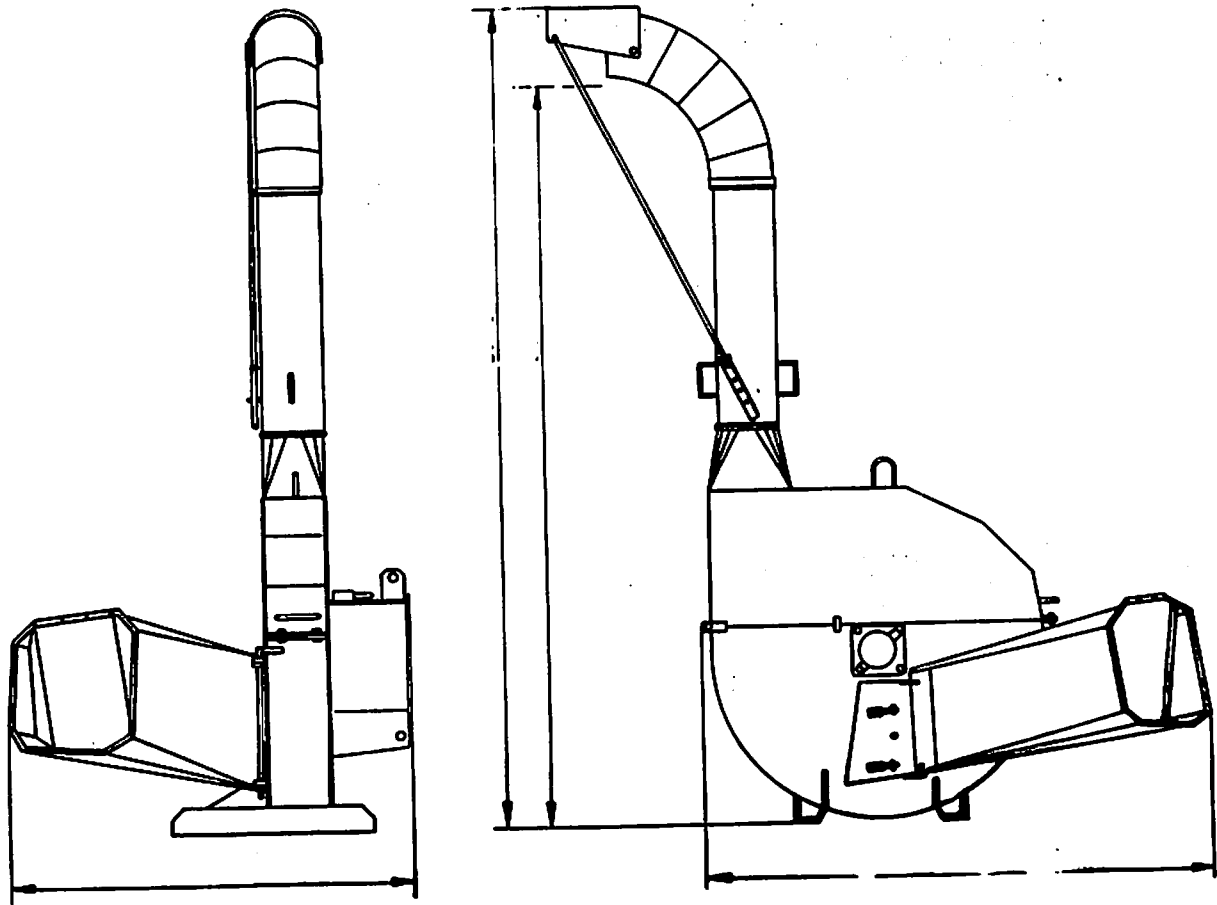


NORTHEAST IMPLEMENT CORP.

Box 402

Spencer, NY 14883

(607) 589-6160



SPECIFICATIONS

CHIPPER MODEL	CH 200	CH 200S	CH 200SS	OEM
*MOUNTING	3-point hitch	3-point hitch	3-point hitch	stationary
*POWER REQUIREMENT	540-650 rpm 40-90 HP depending on tree size and species.			
*CHIPPING DISC	Diameter 41", Weight 560 lbs., boxed double disc.			
*CHIP LENGTH	Continuously adjustable between ¼" to 1" length.			
*KNIVES	Three 11.8" x 5.5" x 0.55" full size knives.			
*ANVIL	Adjustable hardened steel anvil.			
*INFEEED CAPACITY, ROUND WOOD	9" diameter	9" diameter	9" diameter	9" diameter
*DISCHARGE	Adjustable 360°, standard discharge height 115", optional discharge height 12½'.			
*FEED SYSTEM	Direct from knives	One hydraulic feed roller	Two hydraulic feed rollers	Direct feed S or SS optional.
*MAX OIL PRESSURE	---	3330 psi	3330 psi	---
*HYDRAULIC MOTORS POWER	---	6.7 HP	2 x 6.7 HP	---
*SHIPPING WEIGHT	1230 lbs	1470 lbs	1520 lbs	1250 lbs

READ THIS OPERATORS MANUAL BEFORE USING THE VALBY CHIPPER!

Give special attention to the instructions regarding sharpening and service of the knives. The warranty is void if directions for use and service have not been respected. Familiarize yourself and your co-workers with the directions about safety.

- 1) Ensure that the PTO shaft shields are intact.
- 2) Do not work unnecessarily in front of the feed chute.
- 3) Never put your hand or foot inside the feed chute.
- 4) Do not use gloves that are in poor condition because they may become caught in branches.
- 5) Let go of the tree when the knives touch it.
- 6) **DO NOT USE THE CHIPPER FOR OTHER USES THAN CHIPPING WOOD.**
- 7) Observe that other people do not become endangered when you are using the chipper.
- 8) Do not leave the chipper running unattended.
- 9) Disengage the PTO and turn the tractor off when you are servicing the chipper.
- 10) Use only original parts replacements.
- 11) Inform everyone who works with the chipper about the risks and how they can avoid accidents.
- 12) You must use eye and ear protectors to prevent permanent loss of sight or hearing.

MOUNTING AND USE OF THE CH200

-Fasten the feed chute with pin (55) (see spareparts drawing)

-Connect the discharge tube (4) and the curved tube (5).

If you have the optional extension pipe (57) connect it between the discharge tube (4) and the curved tube (5). Extend the lid control with the extension rod (58).

-Connect the extension tubing to the chipper.

-The chipper is mounted on the 3 point hitch of the tractor. The power is transferred to the chipper with a power take off shaft. The chipper has a 1 3/8" 6 spline PTO hook up.

MOUNTING OF THE PTO SHAFT

A PTO clutch is a must on all tractors with a PTO brake (Ford, JD and many others)

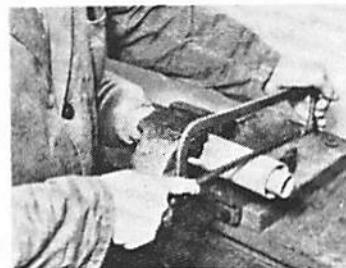
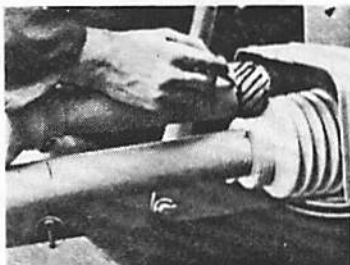
-Lower the chipper on its legs on a flat surface.

-Turn the tractor OFF.

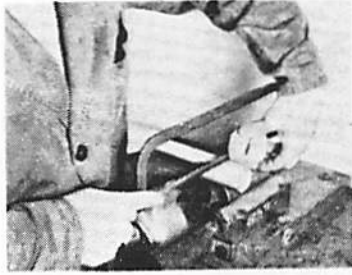
-Turn the chipper's axle by hand to ensure that the disk can turn freely (so there is no foreign object in the chipper).

-Hook up the shielded PTO shaft. The clutch end of the PTO shaft goes toward the chipper. The PTO shaft must be short enough so it will not bind when the 3 point hitch is lifted up.

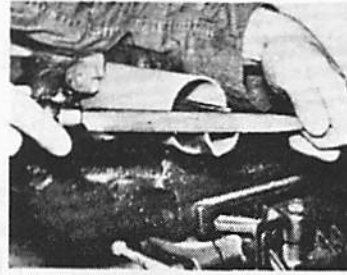
WARNING! If the PTO shaft is too long it might bind when the 3 point hitch is lifted up. Damage might be caused to the bearings of the chipper or to the PTO of the tractor. If the PTO-shaft is too long, it must be cut. Both PTO shaft halves must be shortened by equal amounts.



Connect one shaft half to the tractor's PTO. Cut the plastic shield.
Lay the other PTO half on its side so that the end of the shaft is one inch from the PTO-end of the chipper. Mark lengths required.



Cut profile tube by same length.



File sharp edges.

- Direct the discharge tube in the desired direction.
 - Start up the PTO when the tractor runs at low RPM and increase the RPM to operating speed. The power required depends on the material to be chipped, the chip length (longer chips require more power) and the sharpness of the knives.
 - The chipper is now ready for chipping.
 - Push the tree trunk inside the feed chute until the knives touch the tree. The chipper is self-feeding, so let go of the tree as soon as the knives touch the tree. Ensure that the tree is free from stones or nails.
 - The chipper should be parked on a level and hard surface so it will not tip over.
-

SERVICE

- ALWAYS turn the tractor OFF when servicing or repairing the chipper.
- Open the upper housing bolts (7).
- Lock the disk with the lock bolt (48).
- Remove or turn the feed chute to the side.

PERIODIC SERVICE

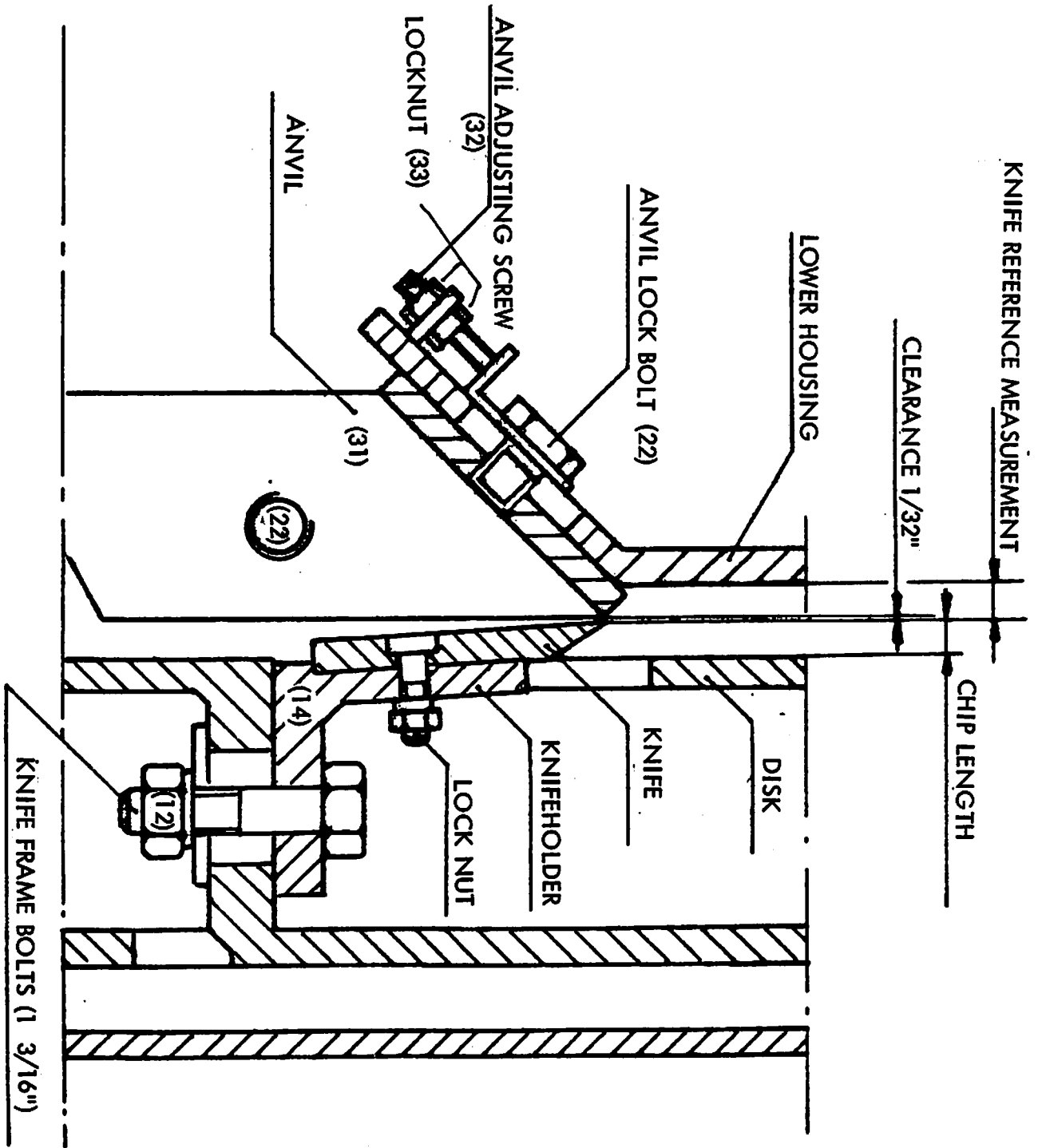
The bearings are lubricated in the factory with Alvania Grease R 3. A similar lubricant should be used by the user. Avoid overgreasing because it causes heat which diminishes the lubrication.

- Lubricate the bearings every six months.
- Check the tightness of the bolts and tighten when needed.
- In a new machine, TIGHTEN ALL FASTENERS AFTER 4 - 8 HOURS USE.
- CHECK THE FASTENERS ON THE KNIVES, KNIFE FRAME AND THE BEARINGS.
- Cover the knives with grease if the chipper stands unused for a long time.
- Make sure that the water drains on the lower housing are open.

ADJUSTING THE KNIVES (ADJUSTING CHIP SIZE)

In order to get enough tension on the knife frame, you need a 3/4" drive socket size 1 3/16" (or 30 mm metric). You also need a 3/4" extension bar 8" long and a 3/4" breaker bar 30" long.

- 1) Lock the disk with the lock bolt (48).
- 2) Loosen the anvil (31) by loosening the four anvil lock screws (22). One of these lock screws is underneath the feedchute. Pull out the anvil to its outermost position with the nuts on the anvil adjuster (32).
- 3) Loosen the nuts (12) (1 3/16") on the knife frame (14).
- 4) The distance from the disk to the edge of the knife is roughly equal to the chip size (the chips will be slightly longer). Move the knife frame to the desired chip length. Measure the distance from the disk to both ends of the knife.



- 5) Tighten the knife frame bolts (1 3/16" socket).
- 6) There is some sideways sway in the disk as it is of welded design. To eliminate the effect of the sway, adjust the two other knives in the following manner.
 - Take the "knife reference measurement" from the first knife you just set. The "knife reference measurement" is the distance between the edge of the knife to the lower housing of the chipper. Take the "knife reference measurement" from both ends of the knife.
- 7) The other two knives are set using the "knife reference measurement". When you are finished, all knives should have the same "knife reference measurement" on both ends of the knives. Example: Let's assume that the "knife reference measurement" you took from the first knife that you set is 1.40 inches on the left side of the knife and 1.50 inches on the right side of the knife. Set the two remaining knives so that they measure 1.40 inches on the left and 1.50 inches on the right.

When the adjustment is about right, you can tighten the two 1 3/16" nuts just a little. Check for exact setting. You can hit the knife frame with a piece of wood or rubber mallet to get a precise setting.

Tighten the nuts on the knife frame. Recheck your measurements for all three knife frames.

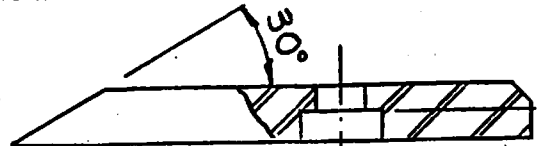
- 8) Turn the disk (2) so that the knife is in line with the anvil.
- 9) Move the anvil (31) with the nuts on the anvil adjusting screw (32) toward the knife so that clearance between the knife and anvil is 1/32" (or 1 mm metric).
- 10) Tighten the locknuts (33) on the anvil adjusting screw (32). Tighten the anvil lock screw (22).

SHARPENING THE KNIVES

You will notice the need to sharpen the knives when:

- Trees do not self feed well
- Increased power requirement
- Decreased smoothness of the chips surface

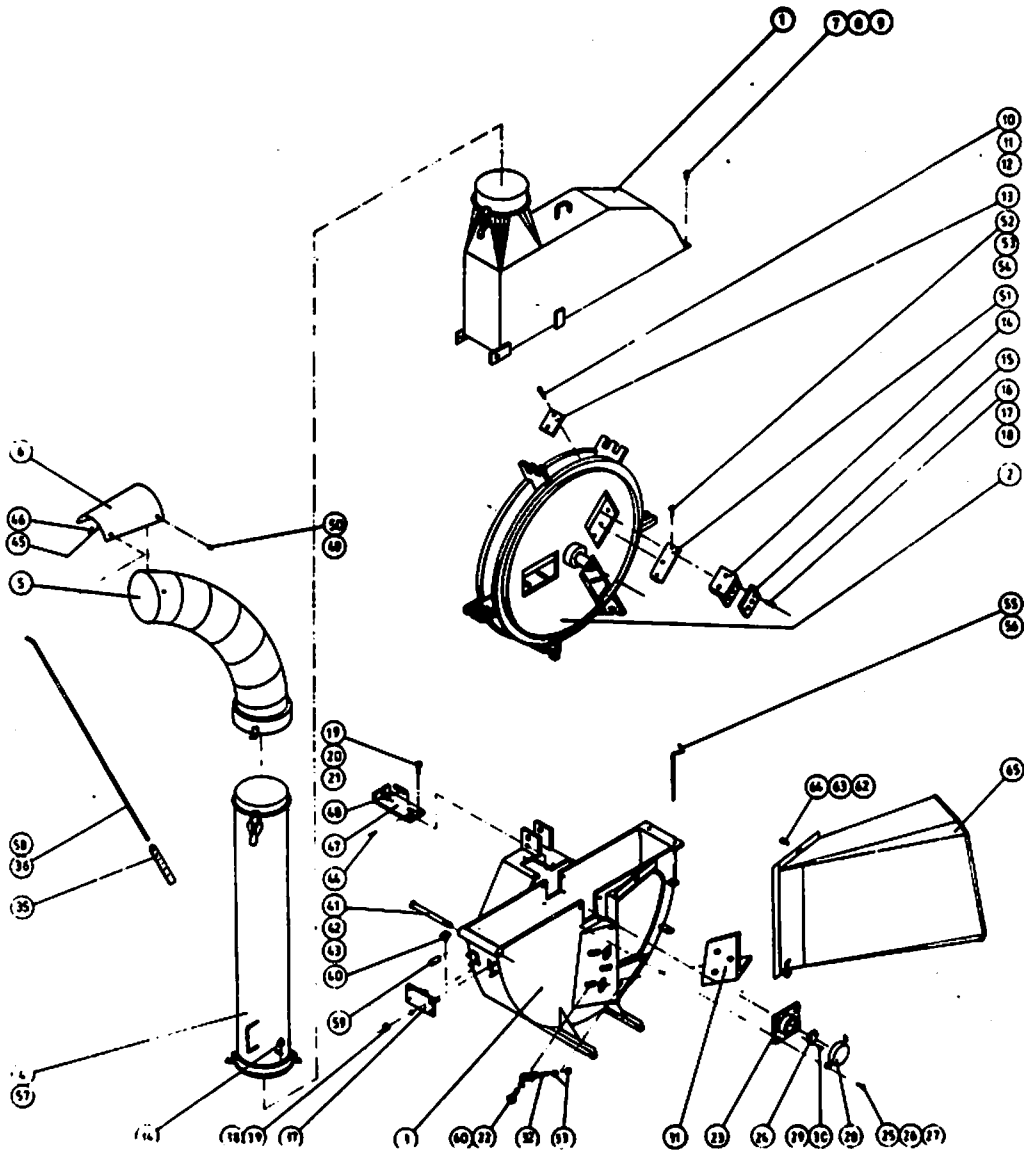
- 1) Lock the disk with the lock bolt (48).
- 2) Remove the 3 locknuts behind the knife frame (socket size 3/4" or 19 mm).
- 3) Remove the knifefastening screws with 10 mm hex bit socket (8 mm socket heads also used).
- 4) Sharpen the knives at a 30° angle. Avoid getting the knife hot when sharpening. Sharpen all knives the same. Certain corn choppers use the same style of knife as the Valby Chipper (Papec for example). Automatic grinders to service this style knife can thus be found at some implement dealers. Grinders to service chipper knives are of course available from grinder and knife manufacturers.
- 5) Fasten the knife.
- 6) Adjust anvil clearance if needed.



SHARPENING THE ANVIL

If you notice wear or rounding of the inner edge of the anvil, sharpen the anvil so that original angles are retained.

IMPORTANT - DO NOT use the chipper if the temperature falls under 5 ° below zero. This practice will prevent risk of damage to the knives. Also avoid chipping trees that are frozen solid as they will not self feed well.



WARNINGS

- Turn the tractor OFF when you service or repair the chipper.
- Lock the disk for service or repair.
- Make sure that all shields are in place and intact. Removal of the shields is prohibited!
- Park the chipper on hard and level ground so it will not fall down.
- When handling the knives, use protective gloves.
- Ensure that the flying chips do not endanger you or bystanders.
- Use ear and eye protectors.
- Use only original spareparts.
- Modifications of chipper are prohibited.
- Use common safety practices.

SPARE PART LIST CH 200

Nr	Order nr	Part	Pcs	\$
1	570403	Upper housing	1	\$1060.00
2	570501	Disk	1	\$2568.00
3	570502	Lower housing	1	\$2272.00
4	573020	Discharge tube	1	\$234.00
5	573019	Curved tube	1	\$256.00
6	573016	Lid	1	\$98.00
7	13202	Bolt	2	\$00.50
8	14503	Star washer	2	\$00.30
9	14003	Nut	2	\$00.20
10	13501	Bolt	6	\$02.50
11	14706	Spring washer	6	\$01.30
12	14006	Nut	6	\$00.40
13	57020	Support plate	3	\$55.20
14	57007	Knife frame	3	\$262.00
15	57001	Knife	3	\$70.00
16	13321	Knife fastening screw	9	\$01.94
17	14504	Star washer	9	\$00.30
18	14004	Nut	9	\$00.20
19	13201	Bolt	3	\$00.50
20	14502	Star washer	3	\$00.20
21	14002	Nut	3	\$00.20
22	13404	Anvil lock screw	4	\$01.00
23	16001	Bearing	2	\$124.80
24	57019	Flange	1	\$62.40
25	13401	Bolt	8	\$02.50
26	14505	Star washer	8	\$00.30
27	14005	Nut	8	\$00.40
28	57062	Shield	1	\$66.00
29	13202	Bolt	2	\$00.50
30	14503	Star washer	2	\$00.30
31	570308	Anvil	1	\$288.00
32	570212	Anvil adjuster	2	\$36.80
33	14604	Nut	4	\$02.32
34	15011	Lynch pin	1	\$01.50
35	573011	Lid control	1	\$23.20
36	573012	Rod	1	\$22.40
37	57046	Twig blade	1	\$113.60
38	14504	Star washer	4	\$00.30
39	14004	Nut	4	\$00.20
40	15003	Lynch pin	2	\$01.50
41	13502	Bolt	1	\$12.00
42	14506	Star washer	1	\$01.50
43	14006	Nut	1	\$01.60
44	15002	Spit pin	1	\$00.20
45	14603	Washer	1	\$00.20

Nr	Order nr	Part	Pcs	\$
46	15004	Split pin	1	\$00.20
47	57067	Cover	1	\$63.20
48	57065	Lock bolt	1	\$15.60
49	13202	Bolt	2	\$00.50
50	14002	Nut	2	\$00.20
51	575151	Opening adjuster	3	\$18.00
52	13301	Nut	9	\$00.40
53	14701	Spring washer	9	\$00.20
54	14004	Nut	9	\$00.20
55	570211	Pin	1	\$25.00
56	15011	Lynch pin	1	\$01.50
57	575160	Extension pipe	1	\$211.20
58	575161	Extension rod	1	\$35.20
59	570099	Bushing	2	\$02.00
60	14605	Washer	4	\$00.50
62	14404	Nut	1	\$01.28
63	14504	Washer	1	\$00.30
64	13304	Bolt	1	\$00.20
65	570404	Feed chute	1	\$445.00