



P.O. Drawer B Seldovia, Alaska 99663 Phone: (907) 234-7643, Fax: (907) 234-7430 email: citymanager@cityofseldovia.com

**CITY OF SELDOVIA – RESERVOIR SUPPLY UPDATE
COMMUNITY UPDATE
September 11, 2019**

September 10th

- Gallons Used in 24 Hour Period: 87,830 Gallons
- Usage change from Previous Day: *Decreased* 768 gallons from 9/9/19
- Estimated Reservoir Supply: 2.82 Million Gallons
- Estimated Water Supply for Community: 18.24 Days

September 11th

- Gallons Used in 24 Hour Period: 95,139 Gallons
- Usage change from Previous Day: Usage **INCREASED** 7,309 gallons from 9/10/19
- Estimated Reservoir Supply: 2.85 Million
- Estimated Water Supply for Community: 18.80 Days

CONSERVE CONSERVE CONSERVE! – WE STILL NEED MORE PRECIPITATION!

The information that we are focusing on is daily community consumption which as follows:

- Treated (Potable Water) water going to Seldovia measured in Gallons Per Day (GPD)
- Estimated Reservoir Level measured in acre feet or acre inches, then converted to gallons.
- Estimated water availability to City of Seldovia measured in days; this is an everchanging number as it is based on usage which fluctuates day to day.

It is helpful and important to keep in mind, that droughts and water supply deficiencies have not been an area of concern for the Seldovia or the Kenai Peninsula Borough due to its climate. It is safe to say, that droughts and water supply deficiencies will be added to our EOPs.

City of Seldovia is continuing its conservation efforts. We continue to closely monitor our reservoir level; consumption levels and turbidity levels; moderate to extreme conservation measures are still be taken at the municipality's buildings and are still being requested to the citizens of Seldovia.

We still need to conserve just as much as possible. It will take several precipitation events to get our reservoir back to the average healthy level that we had before.

*The reservoir level increased 1" in the last 24 hours; we are around **2 FEET UNDER** our average reservoir level. On Monday, our public works/water operators hiked above the reservoir and observed that the smaller of the two creeks that feed the reservoir was flowing. Both intake creeks will be checked again before week's end. These are all very positive indicators.*

Important Notes:

We are continuing to work closely with the Borough's Emergency Management team to navigate the path forward. While our reservoir's supply level is continuing to improve, there is still a considerable amount of precipitation needed to get to a satisfactory level of supply; especially while looking towards the upcoming freezing temperatures. What we are focused on is gathering data, resources, including possible funding sources, that will provide vital information of how to proceed and mitigate the next few months.

Backup water status:

Drinking Water Distribution Schedule:

Allotments of Bottled Drinking were made upon consideration of services provided, estimated consumption grounded on customer base, hours of operation and status of operations.

WATER IS AVAILABLE AT THE CITY OFFICES FOR RESIDENTS OF SELDOVIA

WE ARE NOW ENCOURAGING HOUSEHOLDS TO PICK UP 10 GALLONS PER HOUSEHOLD per VISIT; PICK UP LIMIT IS TWICE A WEEK

PLEASE COME TO THE CITY OFFICES TO GET YOUR DRINKING WATER!

- [NON-POTABLE/GREY WATER STATION](#) FOR RESIDENTS TO ACCESS GREY WATER FOR NON-DRINKING PURPOSES; LOCATED ON LOADING DOCK BEHIND CITY SHOP. THERE IS A SIGN IDENTIFYING AND DEFINING WHAT NON-POTABLE WATER IS. THERE IS PLENTY OF GREY WATER ON HAND; PLEASE BRING YOUR BUCKETS TO FILL FOR NON-CONSUMPTION NEEDS.

POTABLE WATER: Drinking water; is safe to drink or to use for food preparation. The amount of drinking water required to maintain good health varies, and depends on physical activity level, age, health-related issues, and environmental conditions.

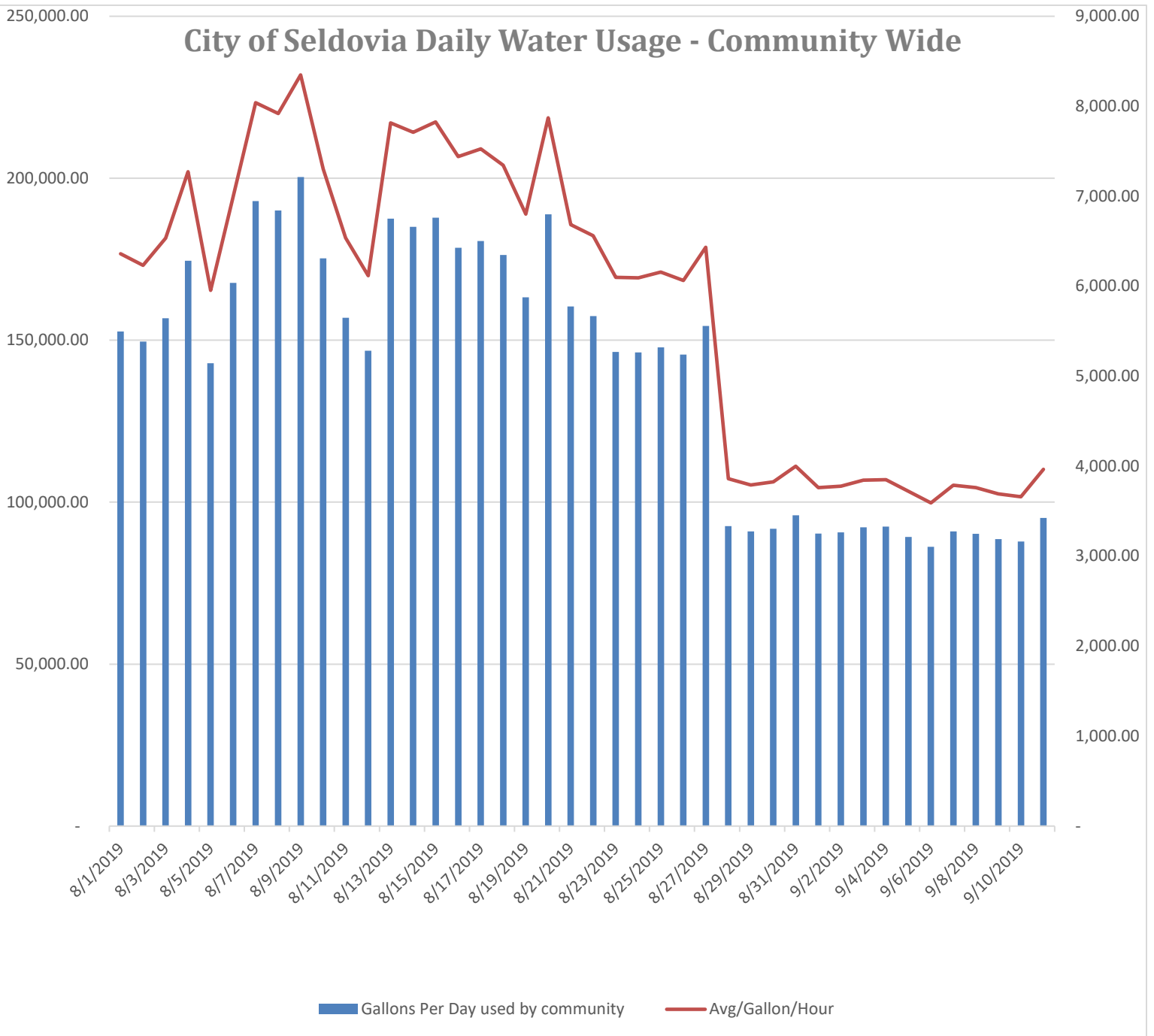
NON-POTABLE WATER: Water that has not been examined, properly treated, and not approved by appropriate authorities as being safe for consumption. Links. About non-potable water: Non-potable water is water that is not of drinking water quality, but which may still be used for many other purposes, depending on its quality.

NOAA Weather forecast September 11, 2019

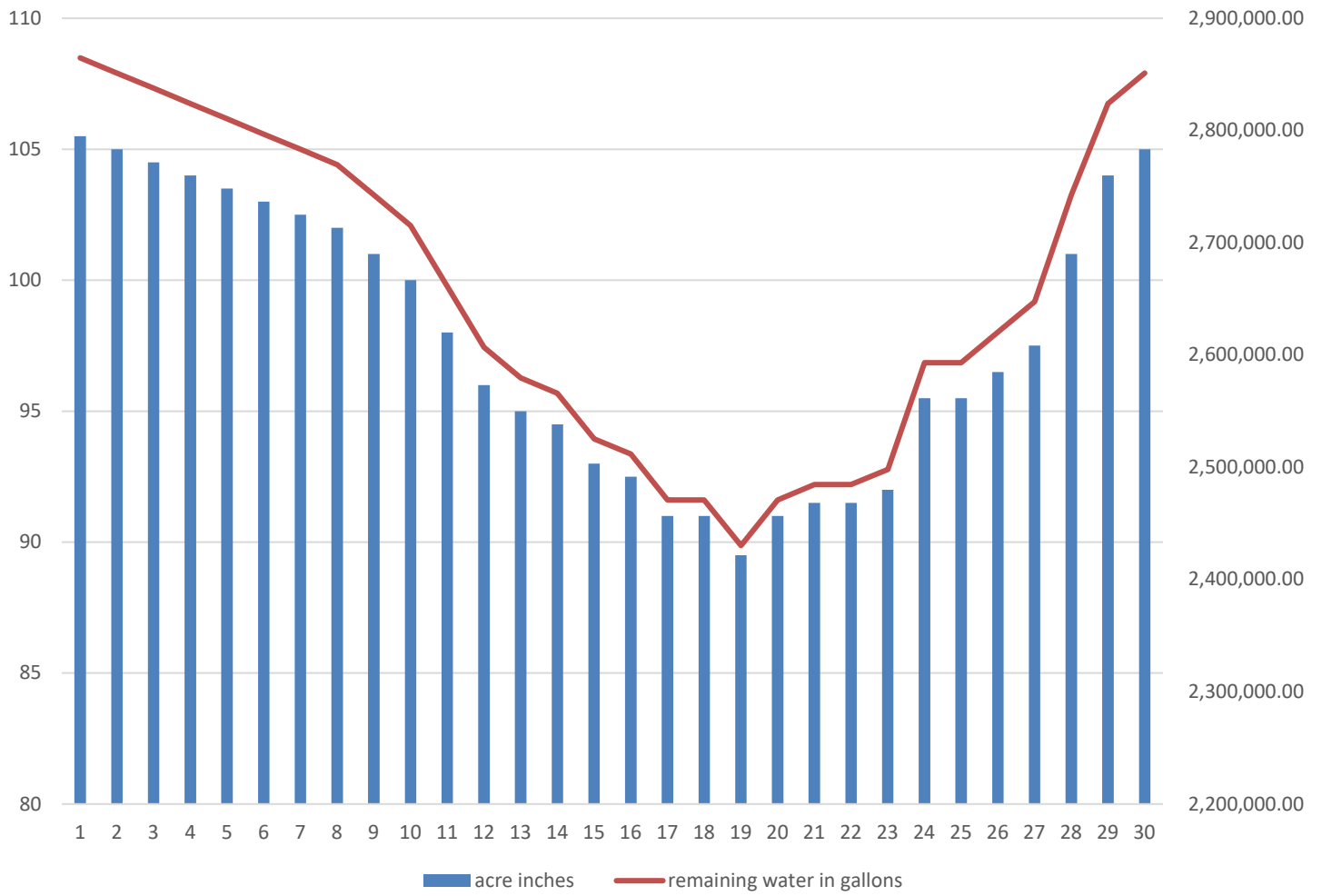
Detailed Forecast

Mostly cloudy, with a high near 59. East wind around 10 mph.	This Afternoon
Rain likely after 7pm. Cloudy, with a low around 53. Southeast wind around 25 mph. Chance of precipitation is 60%.	Tonight
Rain. The rain could be heavy at times. High near 59. Southeast wind 45 to 50 mph. Chance of precipitation is 100%. New precipitation amounts between three quarters and one inch possible.	Thursday
Rain likely, mainly before 7pm, then scattered showers after 10pm. Mostly cloudy, with a low around 50. East wind 15 to 20 mph becoming light northeast after midnight. Chance of precipitation is 60%.	Thursday Night
Showers likely, mainly between 10am and 4pm. Cloudy, with a high near 58. Southeast wind around 5 mph becoming calm in the afternoon. Chance of precipitation is 60%.	Friday
Scattered showers, mainly before 10pm. Mostly cloudy, with a low around 45. West wind around 5 mph becoming calm. Chance of precipitation is 30%.	Friday Night
A 40 percent chance of showers after 10am. Mostly cloudy, with a high near 59.	Saturday
A chance of showers. Mostly cloudy, with a low around 45.	Saturday Night
A chance of showers before 10am, then a chance of rain after 10am. Mostly cloudy, with a high near 59.	Sunday
A chance of showers. Mostly cloudy, with a low around 45.	Sunday Night
A chance of showers. Partly sunny, with a high near 59.	Monday
A chance of showers. Mostly cloudy, with a low around 45.	Monday Night
A chance of showers. Partly sunny, with a high near 58.	Tuesday

City of Seldovia Daily Water Usage - Community Wide



Estimated Reservoir Water Level; based on 30 days AVERAGE of consumption



REMEMBER EVERY DROP COUNTS!

