

SABROE CMO reciprocating compressor units

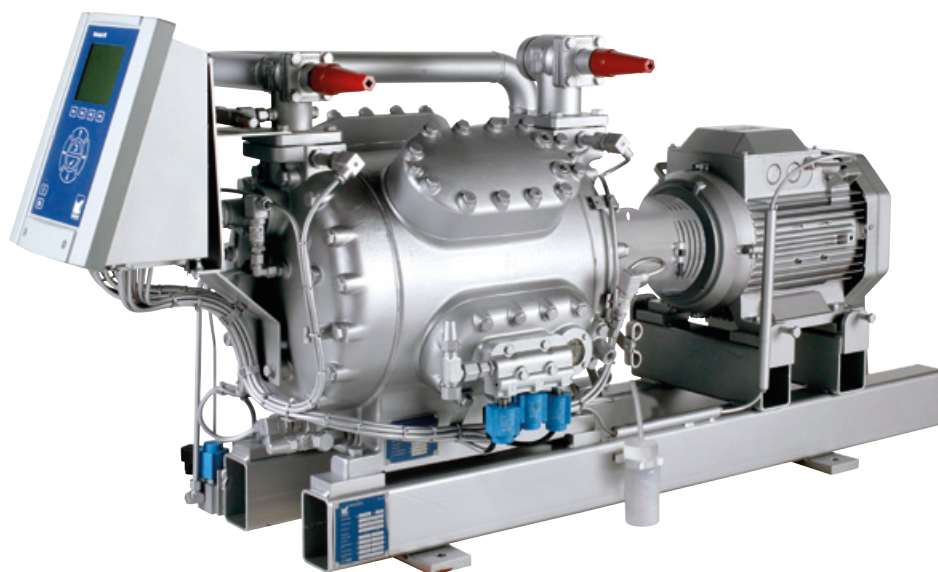
Small single-stage compressors with swept volumes of 100–270 m³/h

CMO compressor units are small units specially designed for use in smaller-scale refrigeration installations where reliability is a particular concern, and uninterrupted service a big priority.

They are an economical, low-maintenance solution for smaller-scale, heavy-duty refrigeration installations, and are most commonly used as stand-alone units operating at full load, or as small back-up compressors.

Range

Six different models are available to provide swept volumes of between 97 and 273 m³/h.



CMO 24 reciprocating compressor unit with Unisab III systems controller

Advantages

High coefficient of performance (COP), with excellent performance even under part-load conditions

Special design ensures low noise and vibration

Variable-speed drive (optional) provides stepless capacity control over the entire operating range

Repairs can be undertaken *in situ*, without removing the compressor

Easy to access for service, with limited spare parts requirements

Benefits

Low power consumption, which greatly reduces operating costs

Wider range of possible mounting locations, and minimal expenditure on noise attenuation systems

Power consumption and operating costs kept to a minimum

Lower repair costs and less downtime

Easy, inexpensive maintenance, which helps limit downtime and reduce operating costs



Options

- Unisab III systems controller
- Variable-speed drive line (Unisab always included)
- Gauges, thermometers and temperature/pressure control switches
- Extended cylinder capacity control
- Oil level regulator (for use in parallel systems)
- ATEX-compliant configuration
- Oil separators with coalescing element
- Special vibration dampening.

Model	Number of cylinders	Swept volume at 1500 rpm m ³ /h	Swept volume at 1800 rpm m ³ /h	R717 *				Unit dimensions in mm			Weight excluding motor kg	Sound pressure level at 1500 rpm db(A)	Sound pressure level at 1800 rpm db(A)
				Nominal capacities in kW at 1500 rpm Single/high-stage		Nominal capacities in kW at 1800 rpm Single/high-stage		L	W	H			
				-10/+35°C	0/+40°C	-10/+35°C	0/+40°C						
CMO 24	4	97	116	52	80	62	96	1400-2150	800	900	480	69	72
CMO 26	6	146	175	78	120	93	144	1450-2175	800	900	520	71	73
CMO 28	8	194	233	104	160	125	192	1475-2200	800	900	550	72	74
CMO 34	4	114	136	61	94	73	113	1400-2150	800	900	480	70	73
CMO 36	6	170	204	91	141	109	169	1450-2175	800	900	520	72	74
CMO 38	8	227	273	122	187	146	225	1475-2200	800	900	550	73	75

* Other refrigerants available on request

Nominal capacities are based on:
1500 rpm at 50 Hz.
1800 rpm at 60 Hz or VSD.

For R717

2K liquid subcooling and 0.5K non-usable suction superheat.

Design pressure, HP side: 28 bar
Design pressure, LP side: 18 bar
Differential pressure: 25 bar.

Sound pressure levels in free field, over reflecting plane and one metre distance from the compressor block.

Min./max. speed	R717
CMO 20	700-1800 rpm
CMO 30	700-1800 rpm

All information is subject to change without notice.

Johnson Controls Denmark ApS · Sabroe Factory
Christian X's Vej 201 · 8270 Højbjerg · Denmark
Phone +45 87 36 70 00 · Fax +45 87 36 70 05
www.sabroe.com

