

AKUPANEL

- Veneer and Laminate Faced

acoustical
ARTCONCEPTS
ACOUSTIC WALL PANELS AND CEILING TILES

Pre-made (stock) systems available for quick delivery.

- Available in a variety of wood species and finishes.
- Class-A Fire rated
- NRC Rating: Up to 0.97.

SPECS

Backer Material: Recycled PET Felt available in 9mm and 18mm upon request

Slat Material: Class A Fire Rated Black MDF., other colors are available.

Slat Thickness: FR MDF, 3/4", Class A FR Black MDF 11mm.

Slat Width: 1". Custom widths available.

Slat Edge Detail: Square.

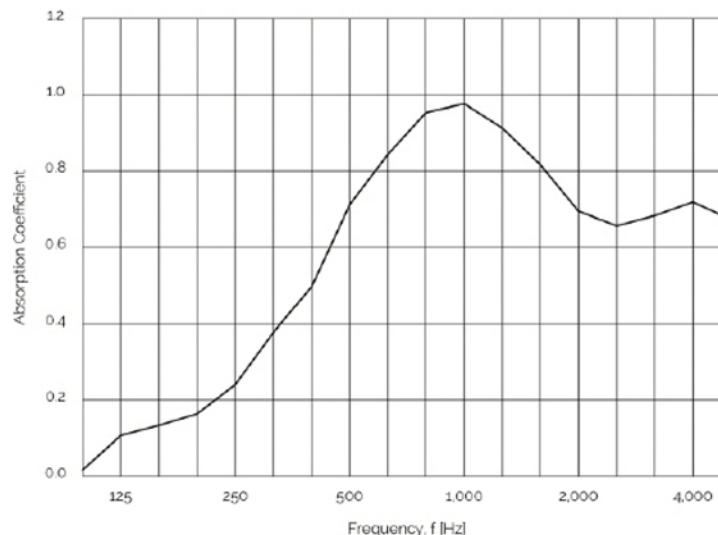
Panel Width / Length/Thickness: 23 5/8" x 94 1/2" x 13/16"

Installation Method: Direct Attach, Adhesive

VOC Emissions: Passes CDPH Standard v1.2.

Veneer faced Akupanel are a stock item for Interlam. Lead time for in stock panels is 1-2 business days to pack and prepare for shipping. Non stock panels generally have a 1-4 week lead time depending on quantity or availability of raw materials. Lead times are determined upon receipt of payment and current inventory, which are based on a "first-come, first-served" basis and are dependent upon our current work load and inventory. Interlam does not charge nor accept additional charges to rush orders. All orders are processed as quickly as possible in the order they are received.

The Akupanel product offers customers the beauty of natural wood veneer or the option of decorative HPL with the added benefit of superior sound absorption and lowering noise reverberation time. As shown in the graph below, the panel obtains an absorption coefficient of 0.97 at 1000 (Hz).



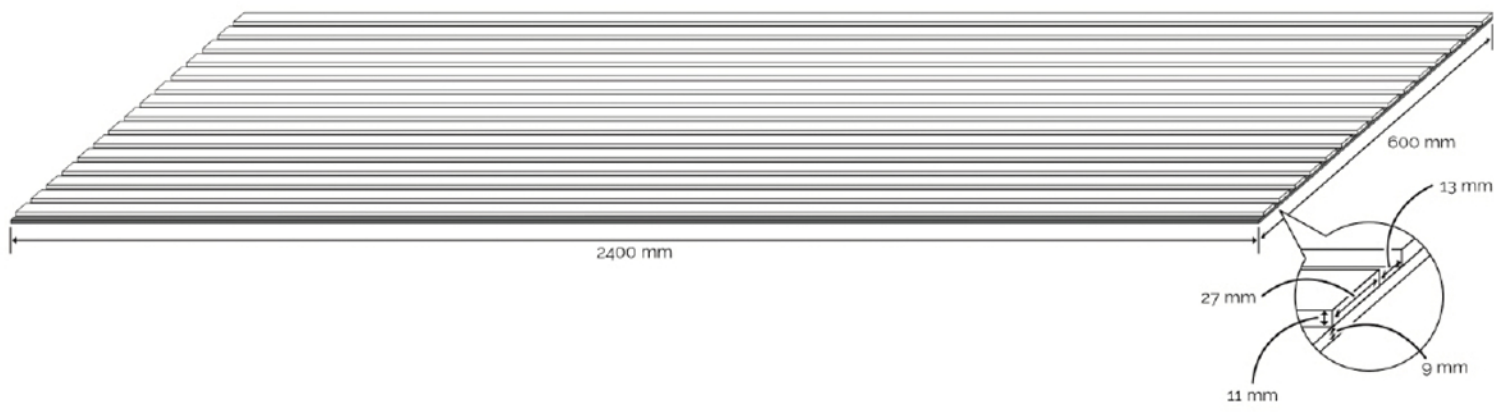
Core Materials Flame Spread and Smoke Developed Index:

The PET backer has a Flame Spread Index of 0 and a Smoke Developed Index of 350.

The black thru colored MDF has a Flame Spread Index of 15 and a Smoke Developed Index of 5.

Class A classification has Flame Spread Index of 0-25 with Smoke Developed Index of 0-450.

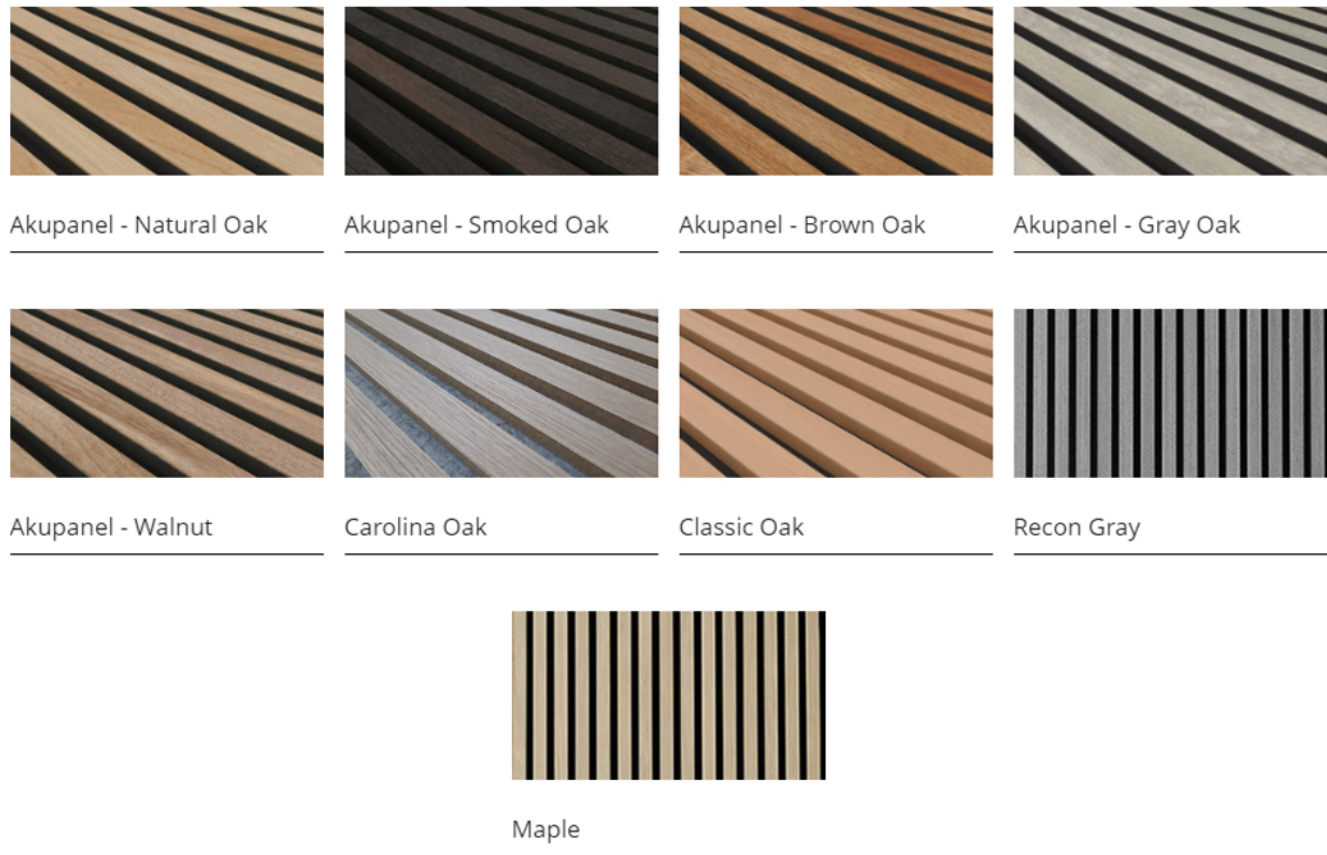
Akupanel is composed of Black PET Polyester Fiber, Black thru colored MDF that can be faced with either real wood veneer or HPL (high pressure laminate). Nominal panel sizes are 600mm x 2400mm x 20mm (23 5/8" x 94 1/2" x 13/16"). Each strip is 11mm thick and 27mm wide with a 13mm gap in between. They are attached to 9mm thick black PET Polyester Fiber material using staples from the backside. Each panel weighs approximately 35lbs.



Color Consistency of Natural Wood Veneers:

Common characteristics of natural wood veneers include variations in color, grain, texture and figure. “End to end” alignment and matching of the veneer cannot be guaranteed from panel to panel. The incorporation of framework, reveals, etc. should be considered to achieve the desired effect.

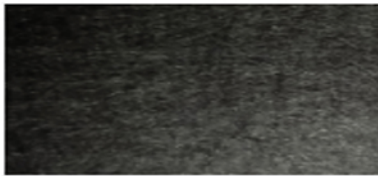
Decorative HPL (high pressure laminate) may be used for more consistent colors, grains, textures etc.



Color Consistency of PET Felt backer:

Each of our PET colors are a thru-color product - this means that the same color you see on the face of the panel is the same color you will see when you cut the panel.

COLORS - PET Felt backer is available in a variety of colors. Custom printed backers are available!



R100 Black



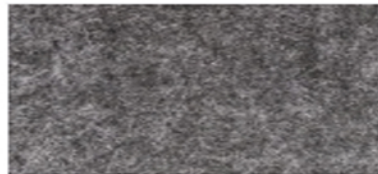
R101 White



R102 Red



R103 Yellow



R104 Charcoal



R105 Marble Gray



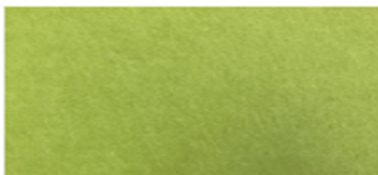
R106 Royal Blue



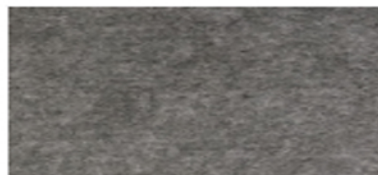
R107 Spring Green



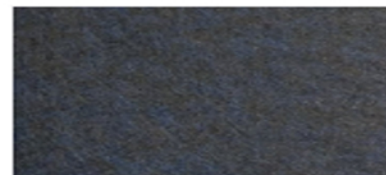
R108 Orange



R109 Pea Green



R110 Gray



R111 Navy Blue



R112 Light Blue

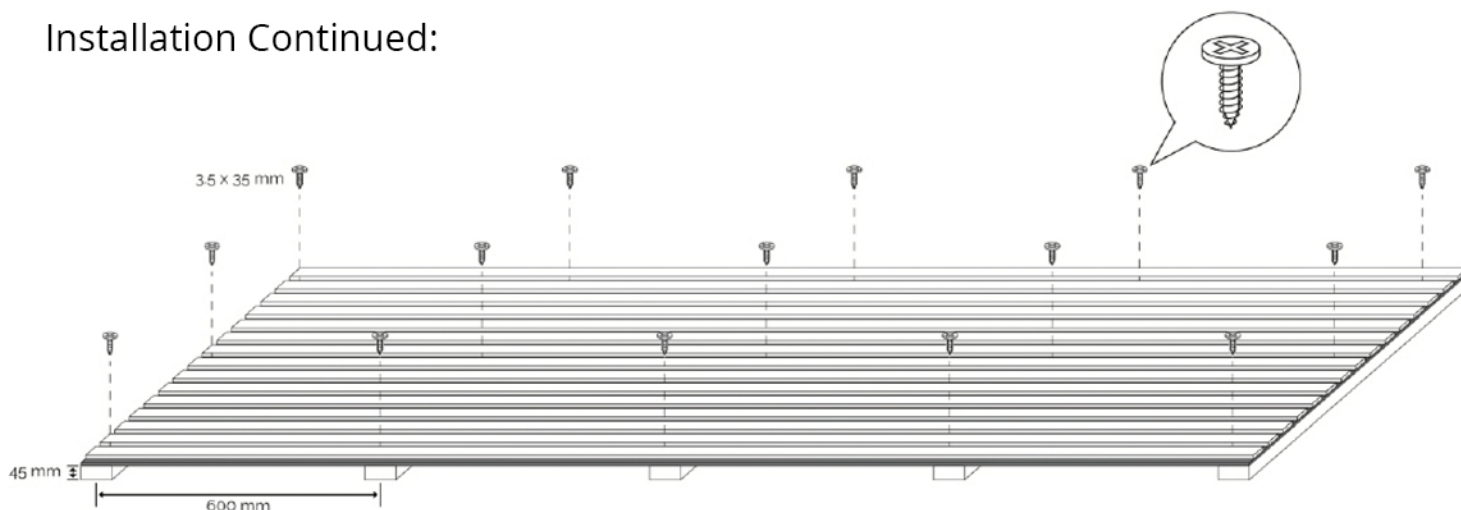


R113 Tan

Akupanel Installation:

Akupanel can be installed on walls and ceilings. For direct application, furring strips installed directly to the wall or ceiling on 600mm centers perpendicular to the Akupanel are recommended. Akupanel can then be attached to the furring strips by using screws between the strips through the PET fiber backing into the studs. A minimum of 15 screws per panel is recommended. Using a black-anodized screw will achieve the best appearance. In addition to the screws a small bead of construction adhesive applied to the furring strips may also be used if desired.

Installation Continued:



Along with using furring strips, ceiling installations may also be achieved by cutting the Akupanel to fit into a suspended ceiling grid system similar to what is used for typical drop ceilings. Akupanel may also be suspended from the ceiling in full panel lengths as well. This is best achieved by attaching furring strips to the back of the panel. Threaded eyebolts can then be attached to the furring strips and then suspended at the preferred height using steel cables. To achieve a fixed mount, solid rods would need to be attached to the furring strips and then mounted to existing ceiling structure. Options will vary, and the assistance of a local structural engineer may be required to evaluate and make recommendations for individual jobsites. In all cases of using the Akupanel as suspended panels, the ceiling structure must be deemed acceptable to carry the weight load of the Akupanel. Local building codes and requirements should be checked and followed.

FURTHER QUESTIONS SHOULD BE DIRECTED TO: josh@interlam-design.com