

EXV Series

VARIABLE SPEED EVAPORATIVE COOLING

Suitable for:

- ≡ Homes and apartments
- ≡ Schools
- ≡ Offices
- ≡ Shops
- ≡ Restaurants and clubs
- ≡ Warehouses
- ≡ Repair / maintenance areas
- ≡ Sports recreational areas
- ≡ Laundries / dry cleaners
- ≡ Commercial kitchens
- ≡ Greenhouses
- ≡ Farm building – dairy / poultry / stables
- ≡ Institutional facilities



The Breezair EXV Series: Variable Speed – the intelligent choice

Keeping cool has never been easier

The Breezair EXV is a high performance evaporative cooler that provides the kind of performance you need for cooling spacious living areas.

It features an exclusive SensorTouch® advanced wall control technology that allows you to vary and adjust the comfort level, monitor your cooler and even drain it at any time. In addition, the Breezair EXV comes with a built-in WATERManager™ and Auto Drain System for easy maintenance.

The Breezair WATERManager electronically monitors water quality. Before impurities build up inside the cooler, they are automatically detected and replaced with clean water. By doing so, cooling efficiency and pad reliability are increased, resulting in decreased maintenance over time.

Breezair EXV offers these built-in safety features!

- ≡ Circuit breaker
- ≡ Thermally-protected variable speed motor and pump
- ≡ On-board isolation switch.

The Only Cabinet with a 25-year Warranty!

- ≡ Injection molded
- ≡ High-strength structural polymer
- ≡ UV resistant
- ≡ Non-rusting.

Tornado® Water Pump

- ≡ 3 year pump warranty
- ≡ Impact start
- ≡ Fully encapsulated motor windings
- ≡ Thermal overload protectors
- ≡ Top and bottom ball bearings
- ≡ Pumps in 1/2" water.



Non-clogging Water Distribution System

- ≡ Unique water flow distributor (patented worldwide by Breezair)
- ≡ Fully balanced and continuous water distribution to all Chillcel™ cooling pads
- ≡ Maintains perfect pad saturation, maximizing cooling efficiency.



Seelectric™ Variable Speed Motor

- ≡ 3 year motor warranty
- ≡ Automatically adjusts speed to maintain comfort level
- ≡ Double-coated with rust inhibitors
- ≡ Low energy use
- ≡ Heavy duty to last longer
- ≡ Low maintenance requirements.



Long Life Chillcel™ Cooling Pads

- ≡ Breezair unique Chillcel™ pads provide maximum cooling
- ≡ Honeycomb design with water distribution header block optimizes the cooling effect
- ≡ Durable design outlasts competitive products.



Control Power Module

- ≡ Advanced electronic controls ensure that the EXV operates at optimum efficiency at all times
- ≡ Smart, reliable & durable.

Integrated Diagnostics Module

- ≡ Automatically monitors cooler operations and provides self diagnostics.

Microprocessor

- ≡ Constantly analyzes water quality, water consumption and power output.

WATERManager™ System and Auto Drain Function

- ≡ Monitors water quality by sensing total dissolved solids in cooler sump
- ≡ Automatic water draining when cooler is not in use
- ≡ Prevents algae growth
- ≡ Drain option setting.



Exclusive One-piece Aerodynamic Fan

- ≡ Molded one-piece polypropylene centrifugal fan
- ≡ Square stainless steel shaft to prevent fan slippage
- ≡ Cools more efficiently
- ≡ Operates quietly
- ≡ Motor lasts longer
- ≡ Costs less to operate
- ≡ Pre-lubricated and sealed bearings (no oil needed).



Harmony SensorTouch® Wall Controller

- ≡ Variable speed
- ≡ Programmable climate control
- ≡ Auto mode, manual mode, timer
- ≡ Drain function
- ≡ Connect up to 41 coolers to single wall controller
- ≡ Built-in diagnostics module fault code downloads.



Horizon SensorTouch® Wireless Control

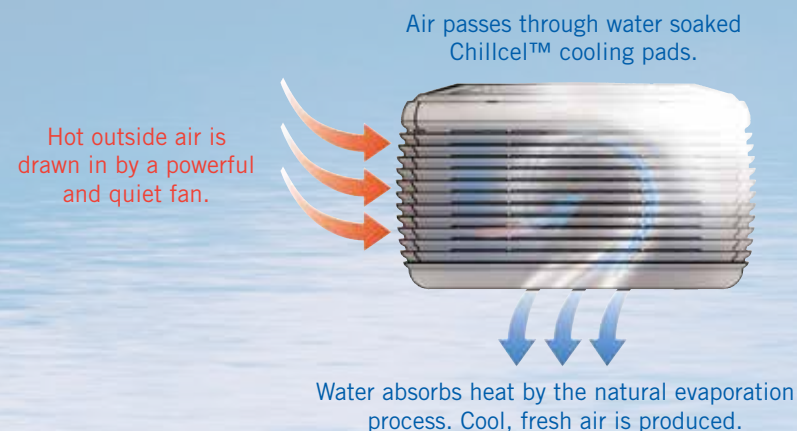
- ≡ Variable speed
- ≡ Programmable climate control
- ≡ Auto mode, manual mode, timer
- ≡ Drain function.



Why evaporative cooling?

Take the natural approach to cooling! Seeley International's Breezair range of evaporative coolers delivers lots of cool, 100% fresh air, at much lower costs than refrigerated air conditioning methods.

Evaporative cooling is fast becoming the only viable option for cooling large areas. A Breezair system uses up to 80% less energy than a refrigerated air conditioning system. Doors and windows can be left open, with absolutely no loss of cooling efficiency.



Fresh, clean air

The delivered air is 100% fresh, with no risk of recirculated fumes, germs or odors.

Most importantly, as the outside temperature rises, the more cooling you get inside – the fundamental benefit of the evaporative process.

The intelligent choice for your home, the environment and your budget

Unlike air-conditioning that requires harsh, earth-unfriendly chemicals to cool the air, Breezair uses only water. That makes the Breezair cooling system the green alternative – and the environmentally conscious choice.

When cooling a large area – and when conventional air conditioning is simply not an option – evaporative cooling is the smartest move you can make. Whether it is used for space cooling or spot cooling, the Breezair cooling system:

- ≡ Is more energy-efficient and cheaper to run when compared to a standard efficiency ducted refrigerated system!
- ≡ Delivers 100% fresh air
- ≡ Is easier and cheaper to install
- ≡ Improves productivity through fresh, clean air (less chance of Sick Building Syndrome or other air-borne problems)
- ≡ Is healthier for the environment – drastically reduced power use, no harmful emissions and no synthetic refrigerants
- ≡ Is easier to maintain.

The advantages for your budget and for the environment are obvious right away with this green, environmentally conscious cooling system.

Technical Specifications

		EXV 155	EXV 275
Airflow	Industry standard (cfm)	5,500	7,500
Cooling capacity*	0.3 IWG (BTU/hr)	27,600	40,000
Power consumption (total)	Watts max	870	1230
	Current max (amp)	7.8	11.1
Power Supply	Voltage / Phases / Hz	115 / 1 / 60	115 / 1 / 60
Controller	Type	variable speed	variable speed
Fan	Type	Centrifugal	Centrifugal
	Diameter (inches)	15 x 15	18 ¹ / ₈ x 15
V-Belt	4L / A	4L-490 / A47	4L-580 / A56
Motor	Type	PSC - variable speed	PSC - variable speed
	Speed max (rpm)	1510	1450
	Output (Watts)	550	750
	Current (amp)	7.2	10.5
	Capacitor (uF)	30	40
	Voltage / Phases / Hz	115 / 1 / 60	115 / 1 / 60
	Overload & fuse	Auto reset & 'one shot' fuse	Auto reset & 'one shot' fuse
Pump	Type	Centrifugal	Centrifugal
	Motor	Synchronous	Synchronous
Cooling pad Chillcel™	Size (inches)	31 ¹ / ₂ x 17 x 3 ¹ / ₂ x 4 pads	31 ¹ / ₂ x 25 x 3 ¹ / ₂ x 4 pads
	Pad area (ft ²)	15	22
Water	Tank capacity (gal)	2.9	2.9
	Inlet (inches)	1/2" male BSP	1/2" male BSP
Shipping	Dimensions including pallet (inches)	45 ¹ / ₂ x 46 x 31 ¹ / ₂ (H)	45 ¹ / ₂ x 46 x 39 ¹ / ₂ (H)
	Volume (ft ³)	38	48
	Mass (lbs)	159	183
	Operating (lbs)	174	198
Connecting duct (raw edge)	Length x width (inches)	21 ¹ / ₈ x 21 ⁵ / ₈ (17 ¹ / ₂ sq roof jack adapter included)	21 ⁵ / ₈ x 21 ⁵ / ₈ (19 ¹ / ₂ sq roof jack adapter included)

*This cooler has been tested in accordance with the requirements of the California Energy Commission Appliance Efficiency Regulations, Section 1603 and 1604.

Cooler Discharge Air Temperature Chart

Ambient Dry Bulb Temperature °F	Ambient Relative Humidity %								
	10	20	30	40	50	60	70	80	90
50	36.6	38.3	39.9	41.5	43.0	44.5	45.9	47.3	48.7
60	43.3	45.5	47.6	49.6	51.5	53.3	55.1	56.8	58.4
70	49.8	52.6	55.2	57.6	59.9	62.1	64.2	66.3	68.2
80	56.0	59.5	62.7	65.6	68.4	71.0	73.4	75.7	77.9
90	62.1	66.3	70.1	73.6	76.9	79.9	82.6	85.2	87.7
100	68.0	73.1	77.6	81.7	85.4	88.8	91.9	94.8	N/A
110	73.9	79.9	85.2	89.8	94.0	N/A	N/A	N/A	N/A
120	79.7	86.8	92.8	98.0	102.6	N/A	N/A	N/A	N/A
130	85.5	93.7	100.5	106.3	N/A	N/A	N/A	N/A	N/A

This chart represents approximate air temperatures based on 87% saturation efficiency at sea level. From tests carried out to Australian Standard 2913.

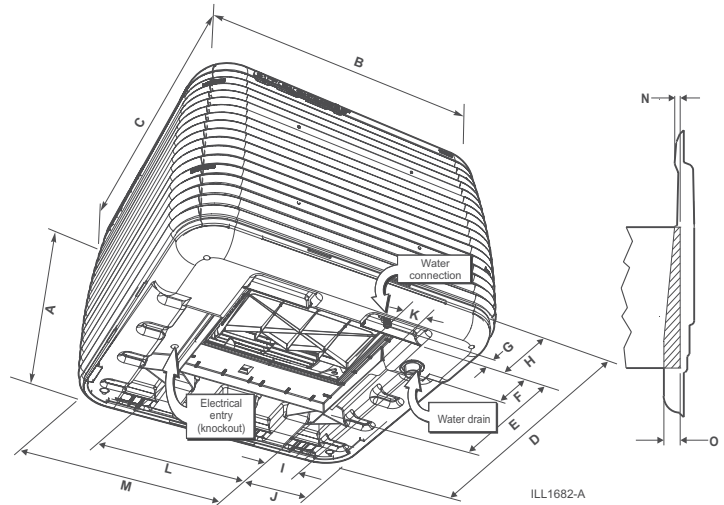


Seeley International Americas
 1202 North 54th Avenue
 Building 2 Suite 117
 Phoenix AZ 85043

Phone 602 353 8066 Fax 602 353 8070
 Email marketing@seeleyinternational.com
 Web seeleyinternational.com

Our Company has a policy of continuous product development and therefore reserves the right to make changes to these specifications without notice. Breezair, Chillcel, and Seelectric are trademarks, and SensorTouch is a registered trademark of Seeley International. © Copyright 2014 Seeley International. June 2014

CABINET DETAILS



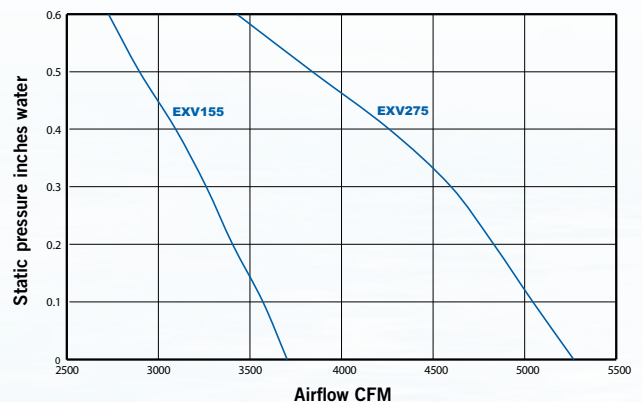
Model#	A	B	C	D	E*	F	G	H	I	J	K	L*	M	N	O
EXV 155	26	45.67	45.67	43.62	21.85	4.29	1.5	7.17	3.19	10.79	4.65	21.85	32.83	1.5	3.31
EXV 275	33.85	45.67	45.67	43.62	21.85	4.29	1.5	7.17	3.19	10.79	4.65	21.85	32.83	1.5	3.31

Note: All dimensions are in inches. *Dropper / roof jack dimensions.

Typical installation

Drain outlet	1 1/2" BSP to 3/4" OD Reducer piece designed for push-on use with a flexible hose (3/4" ID) or solid PVC pipe (3/4" ID)
Water inlet	1/2" BSP to 3/8" Nom or 1/2" BSP to 1/4" compression adapter pieces
Electrical	1/2" Flexible conduit
Install kit (required)	Option 1: Harmony Kit – WIRED Wall Control, includes 65' low voltage wiring loom, auto drain and plumbing fittings Part#111940 Option 2: Horizon Kit – WIRELESS Wall Control, includes wireless receiver, auto drain and plumbing fittings Part#111957

FAN CURVES



Model#	Industry STD Rating CFM	Motor H.P	Certified Air Delivery (CFM) (static pressure inches water)						
			0.0	0.1	0.2	0.3	0.4	0.5	0.6
EXV 155	5,500	0.75	3,704	3,571	3,405	3,261	3,094	2,897	2,728
EXV 275	7,500	1.0	5,268	5,045	4,831	4,598	4,259	3,842	3,432