

# PestiEye<sup>®</sup>



## Instruction Manual

Detects and measures pesticides  
on fruits & vegetables



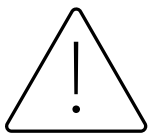
For more information or  
further translations on instruction manual,  
visit [www.nutriPatrol.com](http://www.nutriPatrol.com)

Contact Information  
Email: [services@nutriPatrol.com](mailto:services@nutriPatrol.com)  
Fort Lee, NJ 07024



# Table of Contents

IMPORTANT SAFETY INSTRUCTIONS.....	3
PESTIEYE USE RESTRICTIONS.....	3
PRODUCT PARTS AND FEATURES .....	4
PESTIEYE PROCEDURE.....	5
<i>Things to Note</i> .....	5
CALIBRATION INSTRUCTIONS .....	6
DETECTION INSTRUCTIONS .....	7
DESCRIPTION OF DETECTION ICONS .....	8
DESCRIPTION OF METRICS .....	8
DESCRIPTIONS OF BATTERY LEVEL .....	9
CLEANING & MAINTENANCE .....	9
WARRANTY INFORMATION .....	10
WARRANTY STANDARDS .....	10
WARRANTY CARD.....	10
DISCLAIMER .....	10
CONTENTS.....	11
SPECIFICATIONS.....	11
BATTERY AND CHARGING INFORMATION .....	11



## IMPORTANT SAFETY INSTRUCTIONS

READ THESE SAFETY INSTRUCTIONS BEFORE USING PESTIEYE

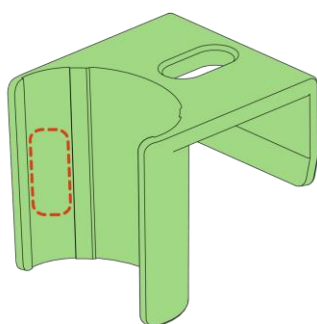
1. This product uses ultraviolet light (UV), DO NOT look directly at the light source, as doing so can cause damage to the eyes. If any discomfort occurs, please consult a physician.
2. Keep out of reach of children or any individual who tends to place inedible objects in their mouth.
3. DO NOT operate device while device is charging.
4. Avoid direct skin contact with PestiEye light source.

## PESTIEYE USE RESTRICTIONS

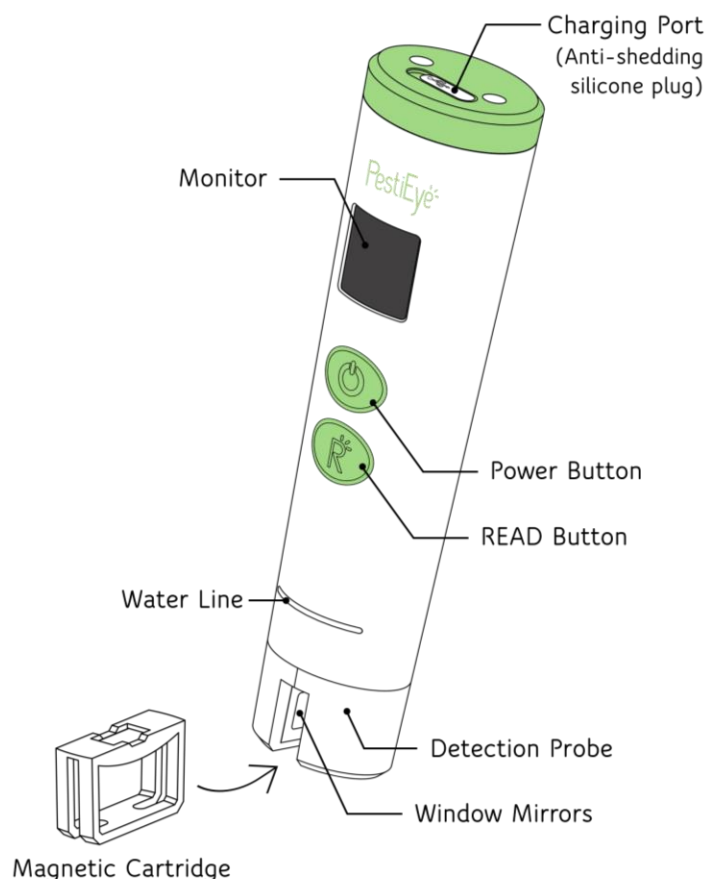
- The water temperature should not exceed 45°C (113°F).
- The water used should be colorless and texture-less without foreign elements.
- Fruits and vegetables that produce mucus or may affect the color of the water are not suitable, such as mushrooms, potatoes, okra, coffee beans, beets, etc.
- The device (PestiEye) should not touch the bottom of the basin when in use.
- The detection probe of the device should be cleaned with gentle cleaners or gently rinsed after each use.
- If detergent or a cleaning solution is used to wash the produce, thoroughly rinse the produce of the solution before testing in water.
- PestiEye must be calibrated to each new water source to work affectively. Calibration only needs to be conducted once for each new water source.
- Vegetables and fruits **should not** be cut before testing.
- **For best results, produce should soak in water for 3-5 minutes and then gently stirred in the water prior to using PestiEye for detection.**
- Please make sure your hands or stirring instrument are free from lotion or any other chemicals/pollutants.
- Do not use PestiEye to stir water.

# PRODUCT PARTS AND FEATURES

Placement indications for  
the stick-on non-slip pads  
(On both sides)



▲ Hook



## Basin Hook :

Designed to be hung on the edge of the basin, the height can be adjusted according to the basin height with the non-slip pads.

## Non-slip Pads (2 pieces) :

Before sticking on the pads, the height from the hook to the front probe is 12 cm.

After sticking on the pads, the height from the hook to the front probe is 8 cm.

If the device is touching the bottom of the basin after being hooked up, the non-slip pads can be used to secure the hook lower on the device to increase the distance from the bottom of the basin when the device is hooked on the side.

## Magnetic Cartridge :

Used to prevent debris from affecting the detection result. The magnetic cover cartridge uses magnetic suction and can be removed for cleaning.

## Water Line :

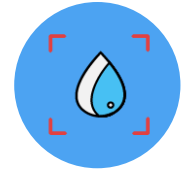
It is recommended that the device is not submerged in the water beyond this line.

## Window Mirrors :

Window mirrors should be submerged for proper detection, but take care not to submerge device beyond the water line.

# PESTIEYE PROCEDURE

- Step 1** Calibrate the device to water source  
*Follow Calibration Instructions on Page 6.*  
*Calibration is only required once unless water source is changed.*



- Step 2** Soak produce for 3-5 minutes to allow pollutants to dissolve in the water and then gently stir the water prior to detection.



- Step 3** Begin Detection  
*Follow Detection Instructions on Page 7.*



## Things to Note

- Recommended produce to water ratio is 1:1.5 (e.g. 1 cup of produce to 1½ cups of water). If there is too much water in comparison to produce, PestiEye may not detect properly as any pollutants may become too diluted in the water.
- PestiEye detection time begins once the device is placed in the water. Once in the water, the device can detect the presence of pollutants within 3 seconds unless the water is too turbid or the window mirrors require cleaning.

When inactive for 2 minutes, the device will return to the standby screen, and with further inactivity, will automatically power off.

# CALIBRATION INSTRUCTIONS

Each time a different water source is used, PestiEye must be re-calibrated. Before calibration, remove the magnetic cartridge and gently clean the window mirrors. Re-insert the magnetic cartridge and follow the steps below to begin calibration.

**Important:** The device should not touch the bottom of the basin when performing calibration or detection.

**Step 1:** Fill basin with water from the water source intended for washing produce.

**Step 2:** Turn on the device by pressing the power button. The monitor will display the icon shown on the right (standby icon).



**Step 3:** Press and hold the R (Read) button for 3 seconds until standby icon changes to calibration mode as shown on the right. After entering the calibration mode, press the R button again.



**Step 4:** When the grey icon (Calibration in Air) appears, press the R button.



**Step 5:** After a blue icon appears, put the device probe into the water no further than the water line and press the R button again.



**Step 6:** Check the monitor, if prompted, PestiEye may take you through steps 4 through 5 again as necessary. If device returns to standby icon, the calibration is completed.


**Important:** If the pink icon (error message) appears, it means that the calibration was unsuccessful. Turn off the device (hold power button) and repeat Steps 1-6.



# DETECTION INSTRUCTIONS

For icon descriptions and metric reading information please visit page 8.

**Important:** The magnetic cartridge must be inserted properly for accurate yielding. The device should not touch the bottom of the basin when performing calibration or detection.

- Step 1:** Turn on the device by pressing the power button. The monitor will display the icon (standby icon) shown on the right.
- Step 2:** Press the R (Read) button, and the monitor will display the  water droplet icon as shown on the right. Do not place PestiEye in the water while this icon is displayed.
- Step 3:** Wait until the green circled water icon (as shown on the right) appears, then place the detection probe in the water to begin detection.
- Step 4:** PestiEye may also be placed in the water when the blue icon (as shown on the right) appears. To continue detection, put the detection probe in the water, as in step 3.



## DESCRIPTION OF DETECTION ICONS



Water contains few to no pollutants.



PestiEye detection probe is ready to be placed in water to begin detection.



Water contains moderate amounts of pollutants.



PestiEye detection probe is ready to be placed in water after starting up device.



Water contains excessive amounts of pollutants.



Do not place in water. (self-adjusting).






If this icon appears when the device is in water, this indicates that the water is turbid and may need to be changed. If this icon appears when the device is out of water, this means that there are water droplets on the window mirrors. If this icon persists, please gently rinse the window mirrors and magnetic cartridge in gentle running water before re-detecting.



In the process of detecting. If this icon continues to flash for more than 10 seconds, you can gently rinse window mirrors with more water as this may mean that there are pollutants left on the window mirrors after previous detection. If this icon continues to flash for longer than 30 seconds, this may indicate that water quality contains excessive pollutants and that more water needs to be added. If the icon persists after adding water, a complete water change is required.

## DESCRIPTION OF METRICS

Icon	Metric Range (parts per million (ppm))
	Less than 2ppm
	2ppm-4ppm
	Greater than 4ppm

*PestiEye provides readings based on the water surrounding the detection probe. Results may vary depending on where PestiEye is placed in the basin, and reading may fluctuate if water is moving. For an average reading, please stir the water and produce in the basin gently and thoroughly and allow the water to settle before inserting PestiEye. (Do not use PestiEye to stir).*

Concentration of pesticide/pollutants detected is displayed on the monitor of the device below the displayed icon. Metric readings are in units of ppm (parts per million) and rounded to the nearest tenth.



## DESCRIPTIONS OF BATTERY LEVEL



Low battery



Fully charged / standby mode



About 25% / standby mode



Charging



About 75% / standby mode



Charge complete



About 50% / standby mode

《Reminder》 When in standby mode, if it is charging, the charging icon will continue to be displayed; if you want to save energy, please hold the power button for 2 seconds to turn off device manually.

## CLEANING & MAINTENANCE

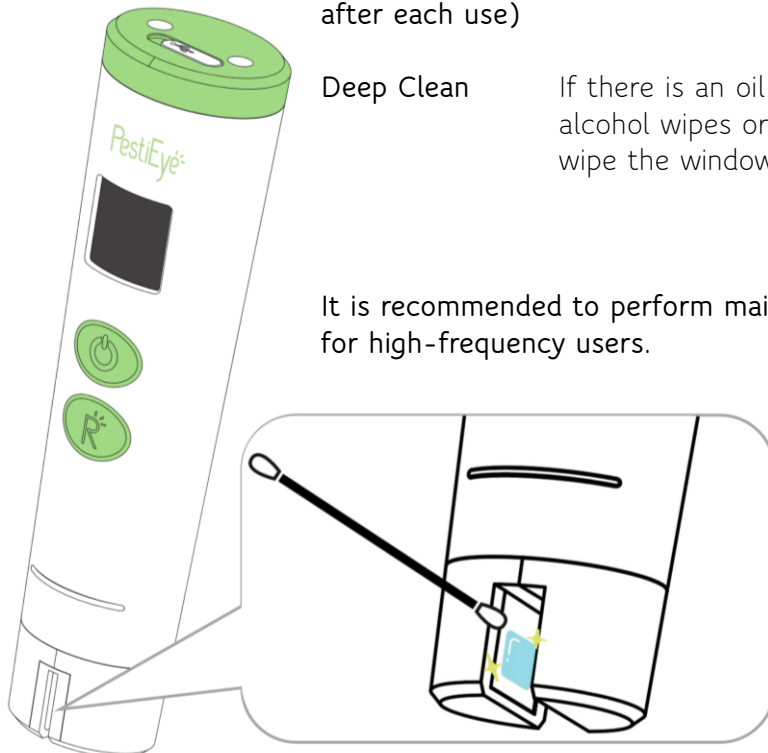
**Maintenance Cleaning**  
(recommended after each use)

Remove the magnetic cartridge and gently rinse the inner window mirrors with clean water to ensure there is no residue.

**Deep Clean**

If there is an oil stain or stubborn dirt, you can use alcohol wipes or alcohol on cotton swabs to gently wipe the window mirrors.

It is recommended to perform maintenance cleaning after each use for high-frequency users.



# WARRANTY INFORMATION

## WARRANTY STANDARDS

To ensure that consumers who use our products can obtain satisfactory after-sales service, our company has implemented warranty standards that require a filled warranty card along with proof of purchase. PestiEye is warrantied for one year from the date of purchase. **Please note: warranty only covers manufacturing defects.**

If it falls under one of the following circumstances, warranty will not be able to be implemented.

1. Consumers' loss or damages due to improper use, maintenance, and storage.
2. Damages caused by repairing at a non-affiliated or third-party repair center.
3. Damages caused by non-domestic use, such as commercial use or social group use.
4. Damages by unforeseeable force.

## WARRANTY CARD

Thank you for your support of our products. The warranty card along with proof of purchase is required to begin the warranty process. Please fill out the warranty card provided with the product and store safely. If the warranty card is lost or misplaced, you will not be able to move forward with the warranty process.

## DISCLAIMER

This product should be used solely for the detection of and monitoring of the presence of pesticide residue for your personal reference. It does not serve as nor provide any cleaning functions, nor does it replace any laboratory testing for chemicals and other substances. It should only be used for personal observations before and after washing produce. We are not liable for any loss or damages that may occur due to misuse or inappropriate use of product.

# CONTENTS

- PestiEye
- Instruction Manual
- PestiEye Basin Hook
- Charging Cable
- Non-slip Pads ×2 (pcs)
- Warranty Card

# SPECIFICATIONS

- Model: PestiEye 1
- Power supply: Lithium battery (1500mAh)
- Outer casing: non-consumable food grade material
- Size(mm): 185 x 50 x 40  
(Length x width x height)
- Weight(g): 175 (Hook excluded)
- Light: UV LED
- Working water temperature: 5°C-40°C
- Waterproof performance: IPX5

# BATTERY AND CHARGING INFORMATION

- Lithium Battery is DC 3.7V, 1500mAh. Use a power adaptor with input AC 100-240V, 50/60Hz, output 5V, 1A.
- This product uses USB wired charging. The device has a USB-C jack that can be directly connected to the charging cable.
- For environmental considerations, this product does not come with a power adaptor.
- To view charging status of PestiEye, device must be turned on.

