

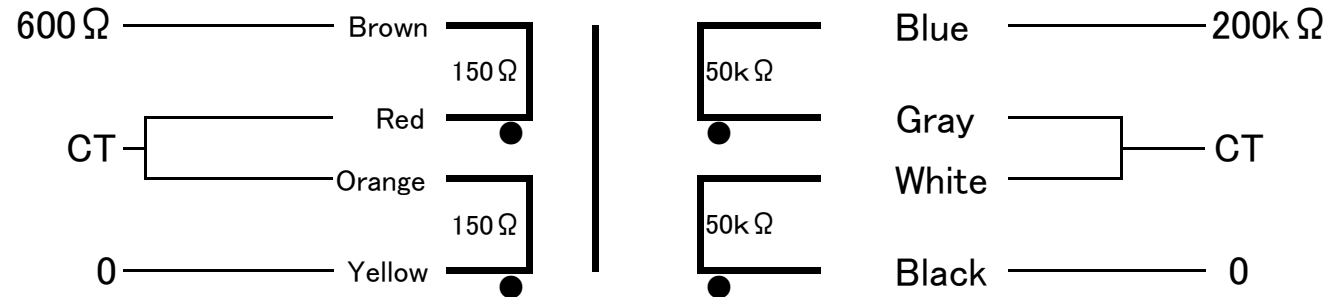


**FM-600-200KCT**

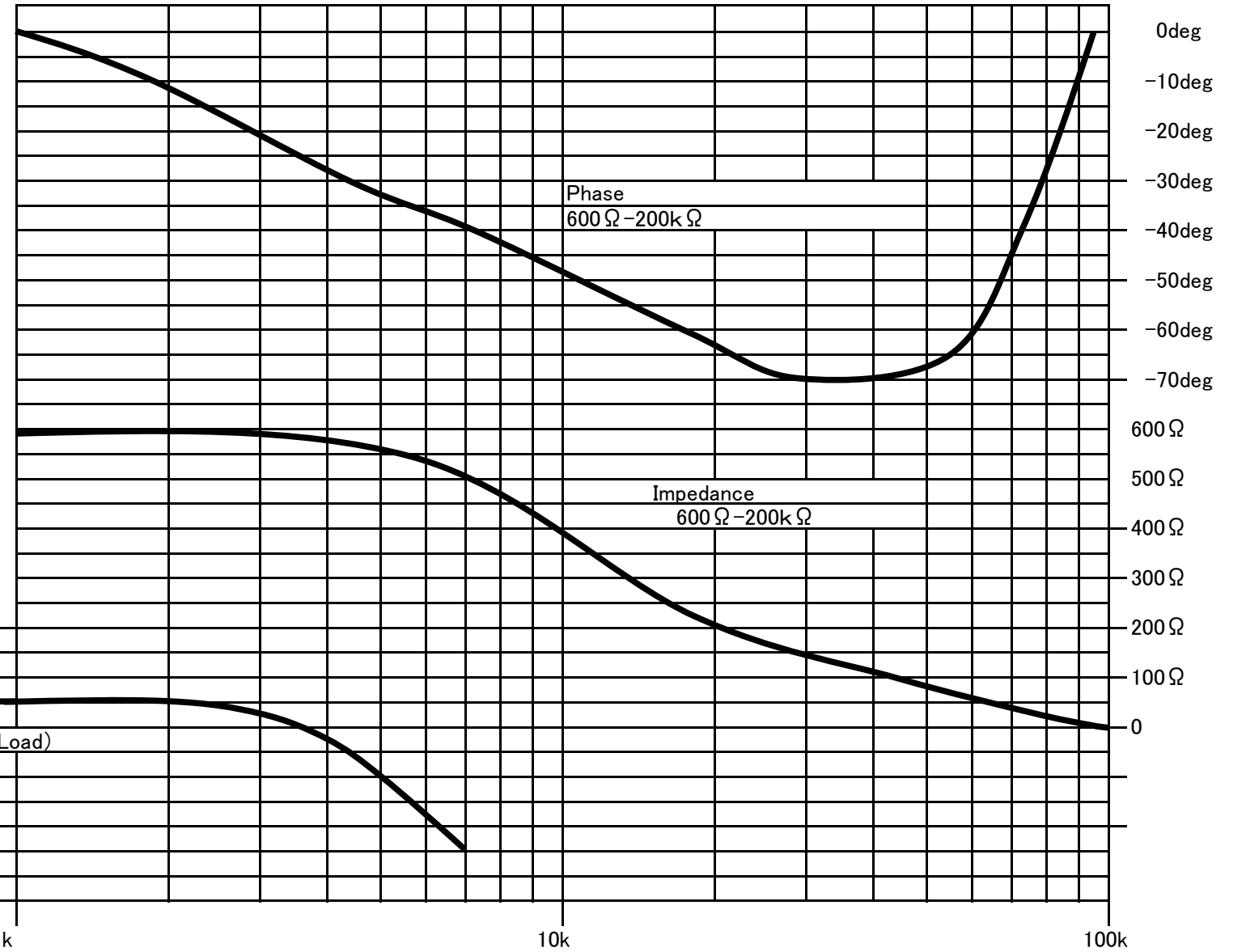
FINEMET® NANOCRYSTALLINE Core L Input Transformer

Audio Feast

**Wiring Connection**

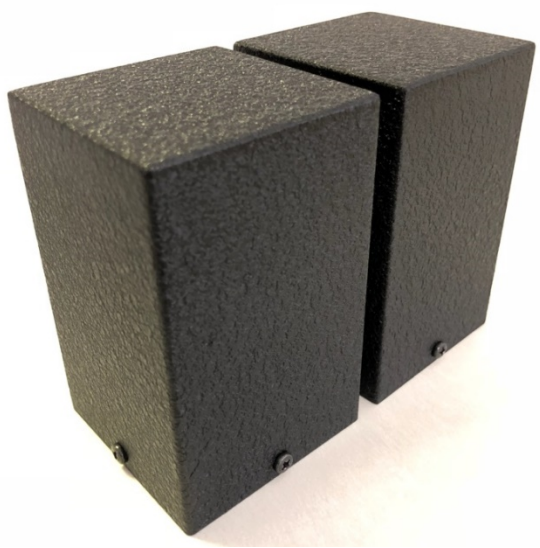
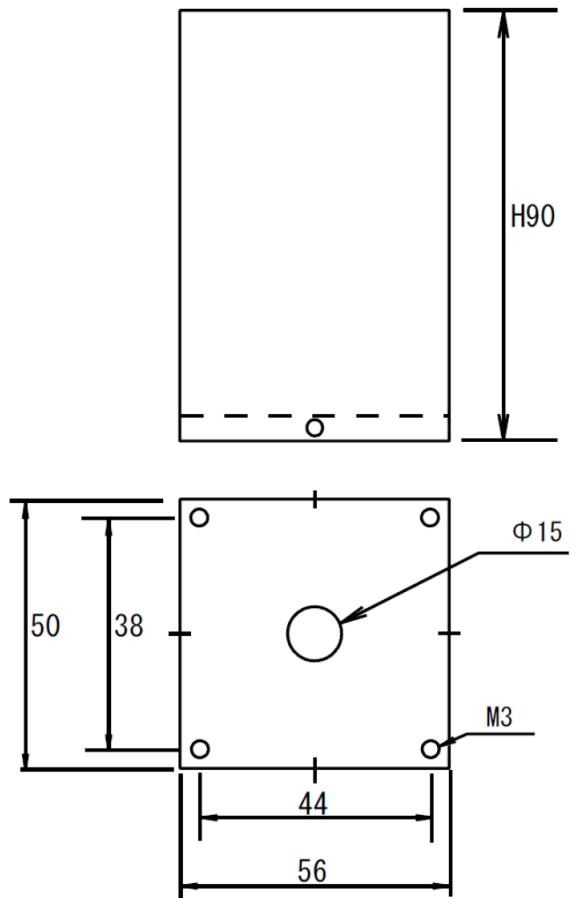


Ratio 1:18.3 Max input voltage 10V(50Hz)  
 Freq. Response 30Hz~7kHz(-3dB 0dB 600 Ω)  
 Pri. Inductance 2.5H(50Hz) Sec. Load Resistance 200k Ω ~20M Ω  
 Pri. DCR Brown-Red(4.9 Ω)/Orange-Yellow(4.9 Ω), Sec. DCR Blue-Gray(433 Ω)/White-Black(433 Ω)  
 Pri. max DC Current 140mA Sec. max current 30mA  
 Dimension 50x56x90(H)mm Black hammered metal case, or Urushi finish  
 Mounting Screw 38x44mm



Email: [CleanUnderwear@gmail.com](mailto:CleanUnderwear@gmail.com)  
 Web: [TheAudioFeast.com](http://TheAudioFeast.com)  
 Distributed by Audio Feast (Nashville, TN, USA)  
 Final finish by Teramoto (Myoko, Japan)  
 Designed by General Ind. (Saitama, Japan)

Available on Black metal case OR  
Urushi finish



Black Metal Case



Urushi finish

All dimension is in mm.

Dimension does not include screws around the case.

