



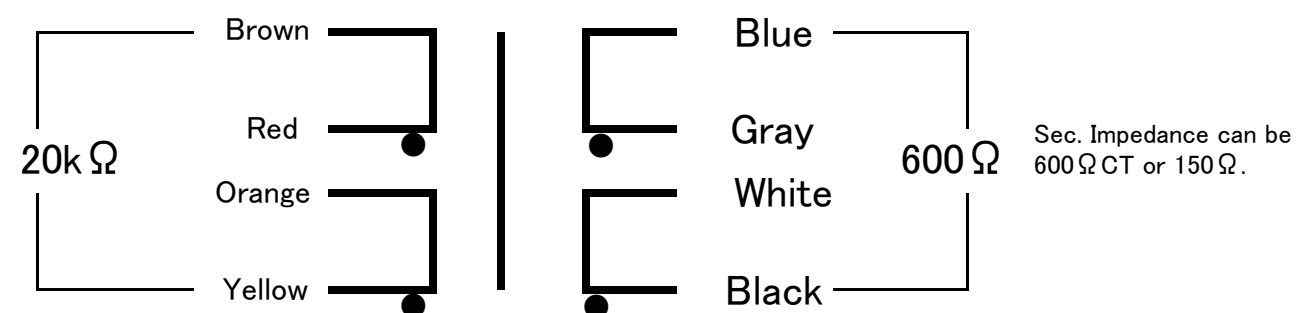
FM-20K-600CT

FINEMET® NANOCRYSTALLINE Core Line/Input/Driver Transformer

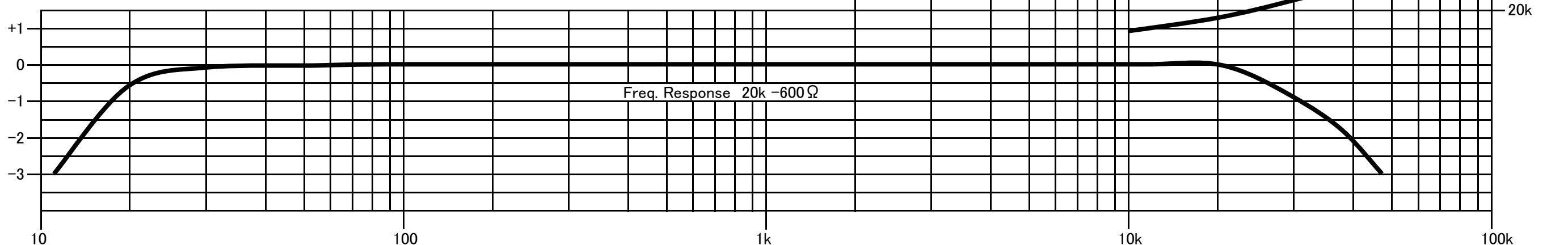
Audio Feast

This transformer is designed to be both input or output transformer.

Wiring Connection

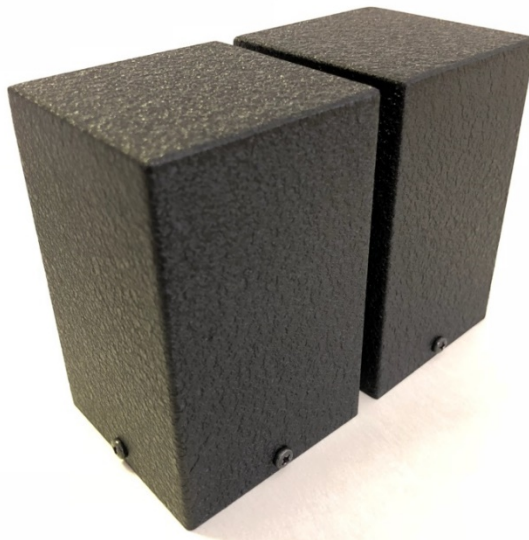
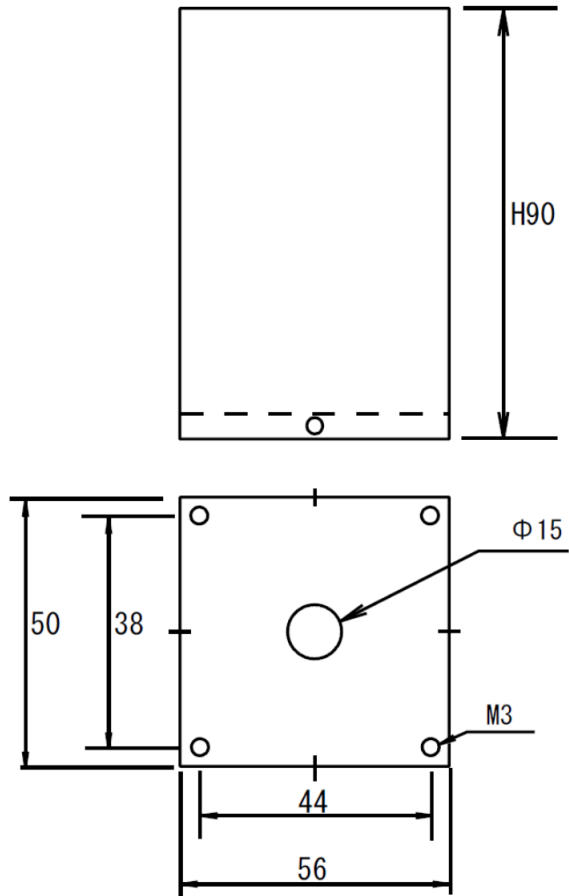


Ratio 1 : 0.177
 Freq. Response 12~48kHz (20k -3dB 6V)
 Pri. Inductance 150H (40Hz)
 Pri. DCR Brown-Red (256 Ω) / Orange-Yellow (256 Ω) Sec. DCR Blue-Gray (13.5 Ω) / White-Black (13.5 Ω)
 Pri. max DC Current DC10mA (SET20k Ω) DC20mA (SET5k Ω) DC120mA (PP20k Ω)
 Dimension 50x55x90 (H)mm Mounting Screw 38x44mm Black hammered metal case, or Urushi finish



Email: CleanUnderwear@gmail.com
 Web: TheAudioFeast.com
 Distributed by Audio Feast (Nashville, TN, USA)
 Final finish by Teramoto (Myoko, Japan)
 Designed by General Ind. (Saitama, Japan)

Available on Black metal case OR
Urushi finish



Black Metal Case



Urushi finish

All dimension is in mm.

Dimension does not include screws around the case.

