

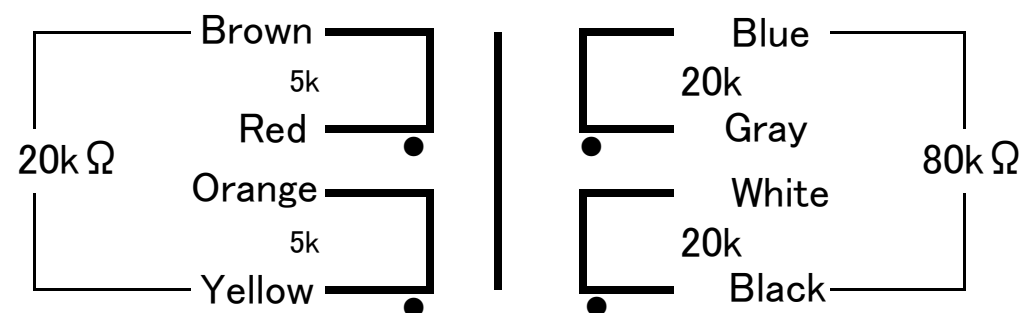


FM-2080D

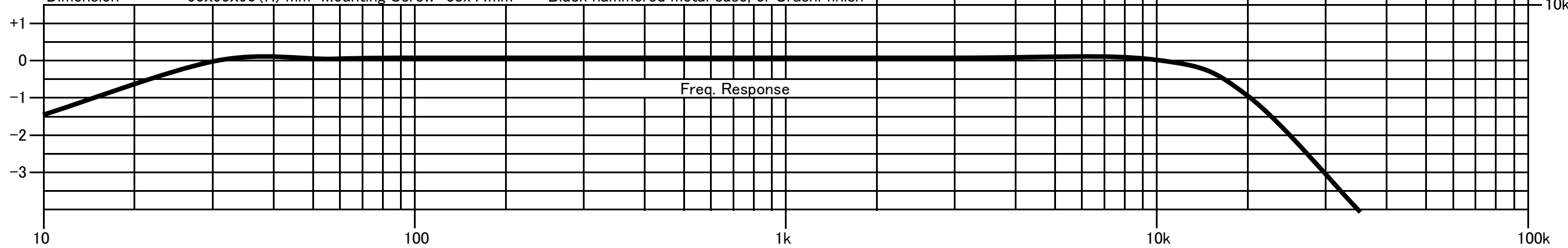
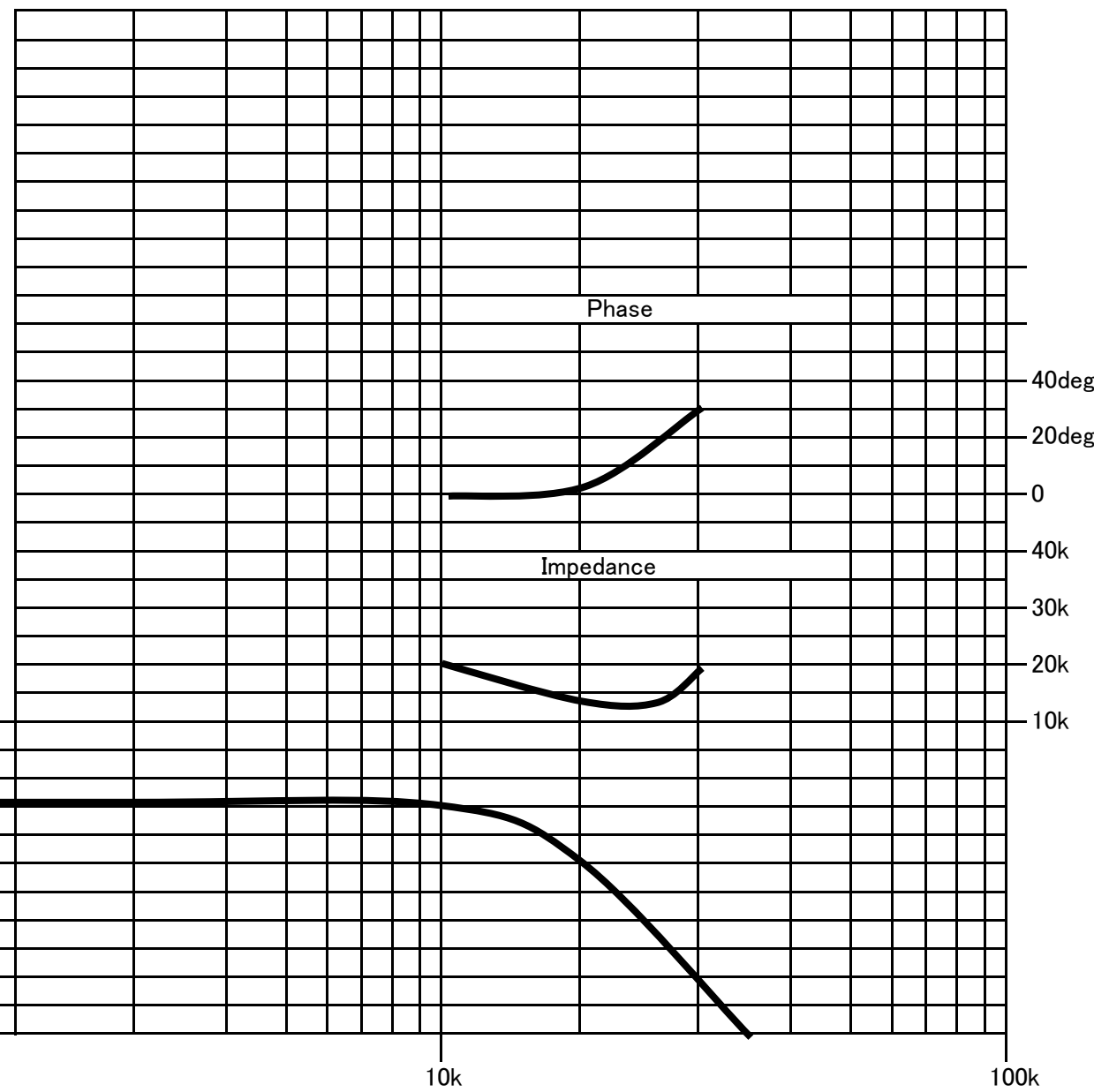
FINEMET® NANOCRYSTALLINE Core Driver Transformer

Audio Feast

Wiring Connection

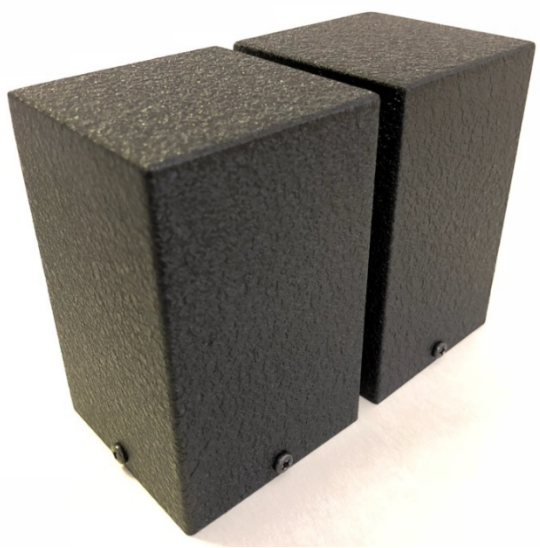
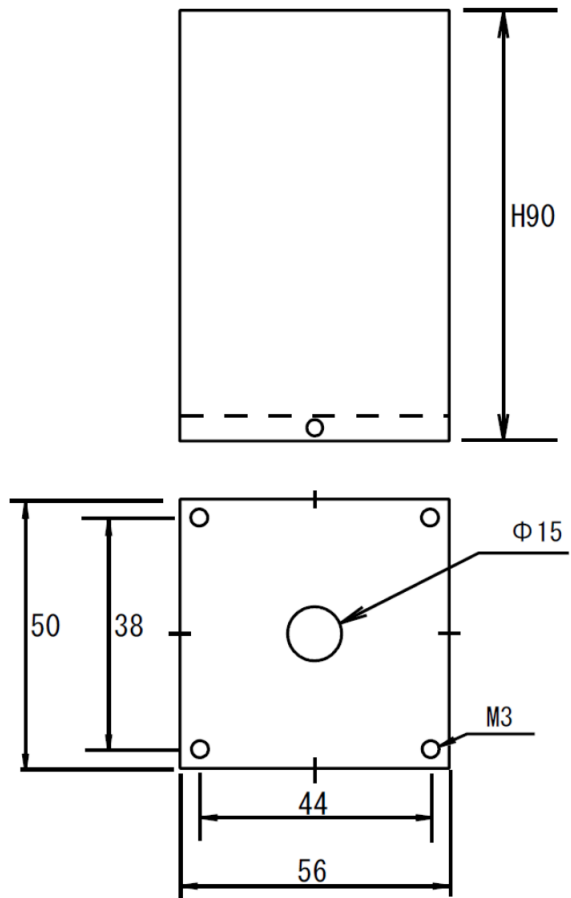


Ratio 1+1 : 2+2
 Freq. Response 14~20kHz(±1dB 3V)
 Pri. Inductance 160H(100Hz)
 Pri. DCR Brown-Red(388Ω)/Orange-Yellow(388Ω) Sec. DCR Blue-Gray(2100Ω) White-Black(2100Ω)
 Pri. max DC Current 20kΩ(Dc10mA) 5kΩ(Dc20mA) (Can be used with sec. open)
 Sec. Load Resistance(recommended) Less than2.8MΩ(80kΩ) Less than700kΩ(20kΩ)
 Dimension 50x55x90(H) mm Mounting Screw 38x44mm Black hammered metal case, or Urushi finish



Email: CleanUnderwear@gmail.com
 Web: TheAudioFeast.com
 Distributed by Audio Feast (Nashville, TN, USA)
 Final finish by Teramoto (Myoko, Japan)
 Designed by General Ind. (Saitama, Japan)

Available on Black metal case OR
Urushi finish



Black Metal Case



Urushi finish

All dimension is in mm.
Dimension does not include screws around the case.

