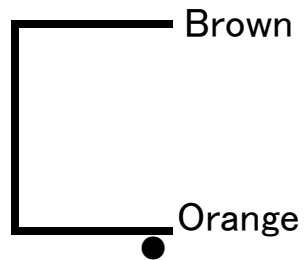


General Transformer

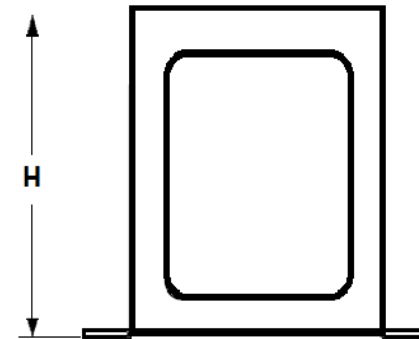
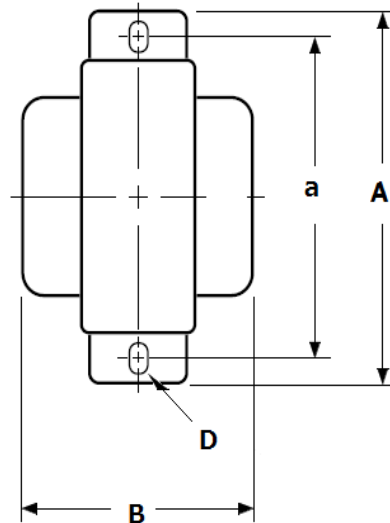
PMC-0826H For Capacitor Input HILITECORE (Non-Oriented Steel Sheet)



Inductance	Max. DC Current	DCR
8H	260mA	90Ω

Dimension 91(A)x77(B)x81(H) Black Band Tyle

Mounting 78(a) Mounting Hole 4.5x6.5(D)



General Transformer / made in Japan