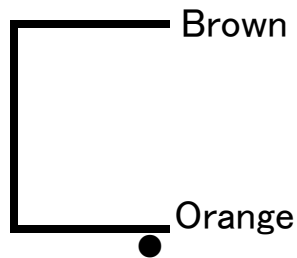


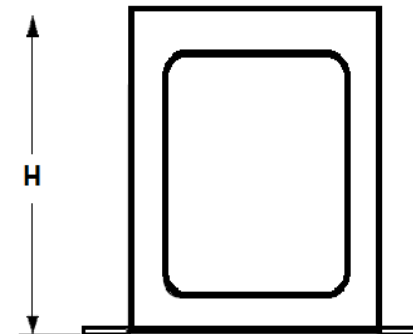
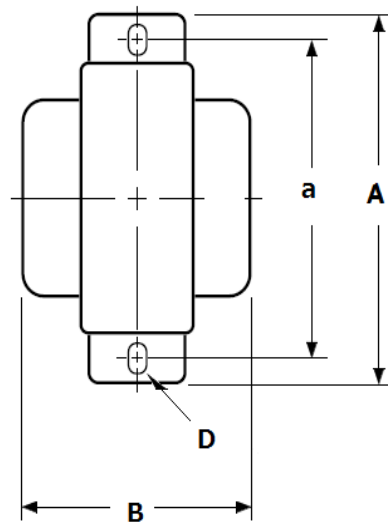
General Transformer

PMC-1018H For Capacitor Input (Oriented Grain Core Guitior)



Inductance	Max. DC Current	DCR
10H	180mA	102Ω

Dimension 81x64x70(H) Band Style **AxBxH**
Mounting 70mm (a) Mounting Hole 4.5x6.5 (D) **830g**



General Transformer / made in Japan