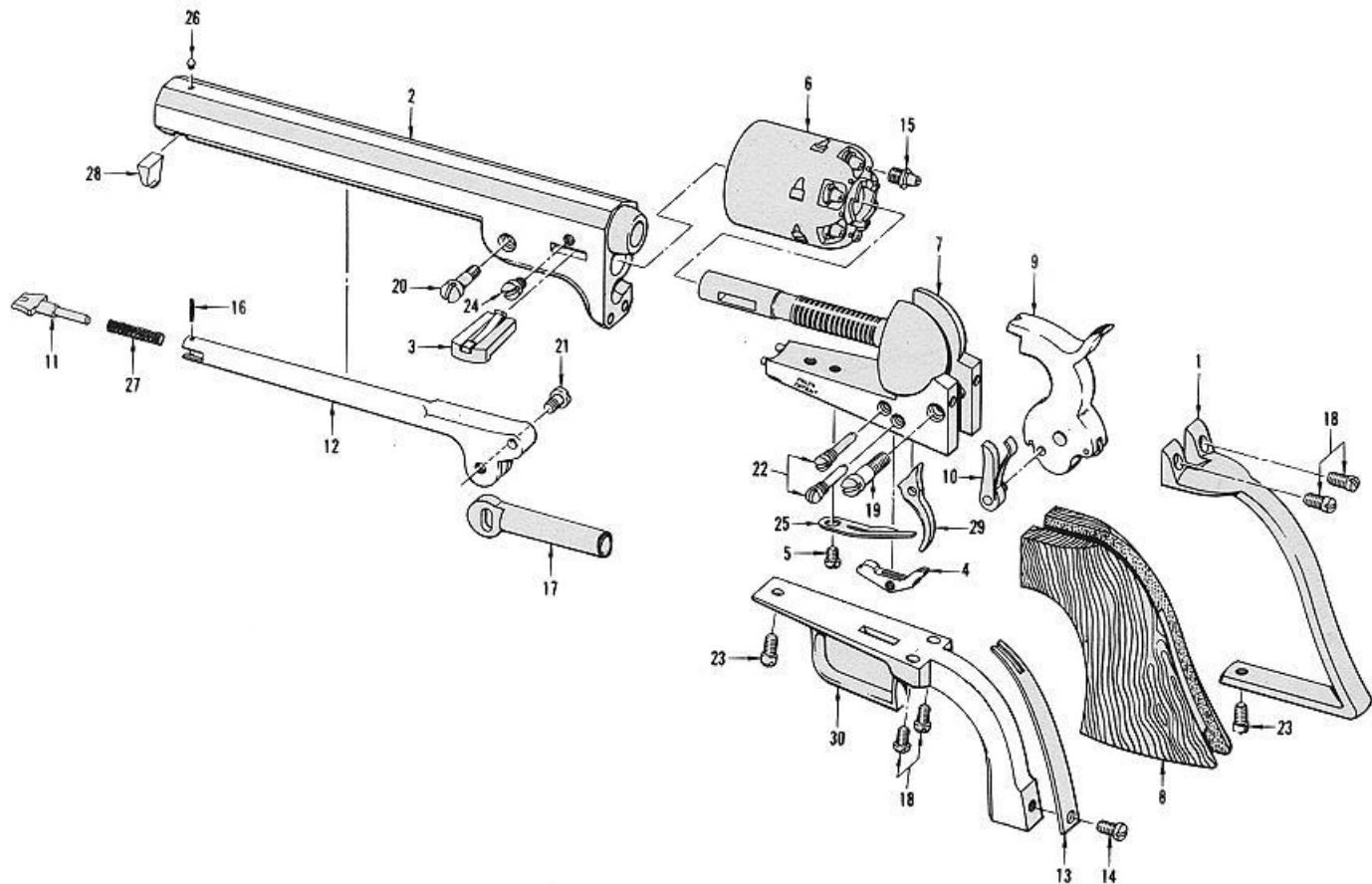


# Colt 1851 Navy (New Manufacture)

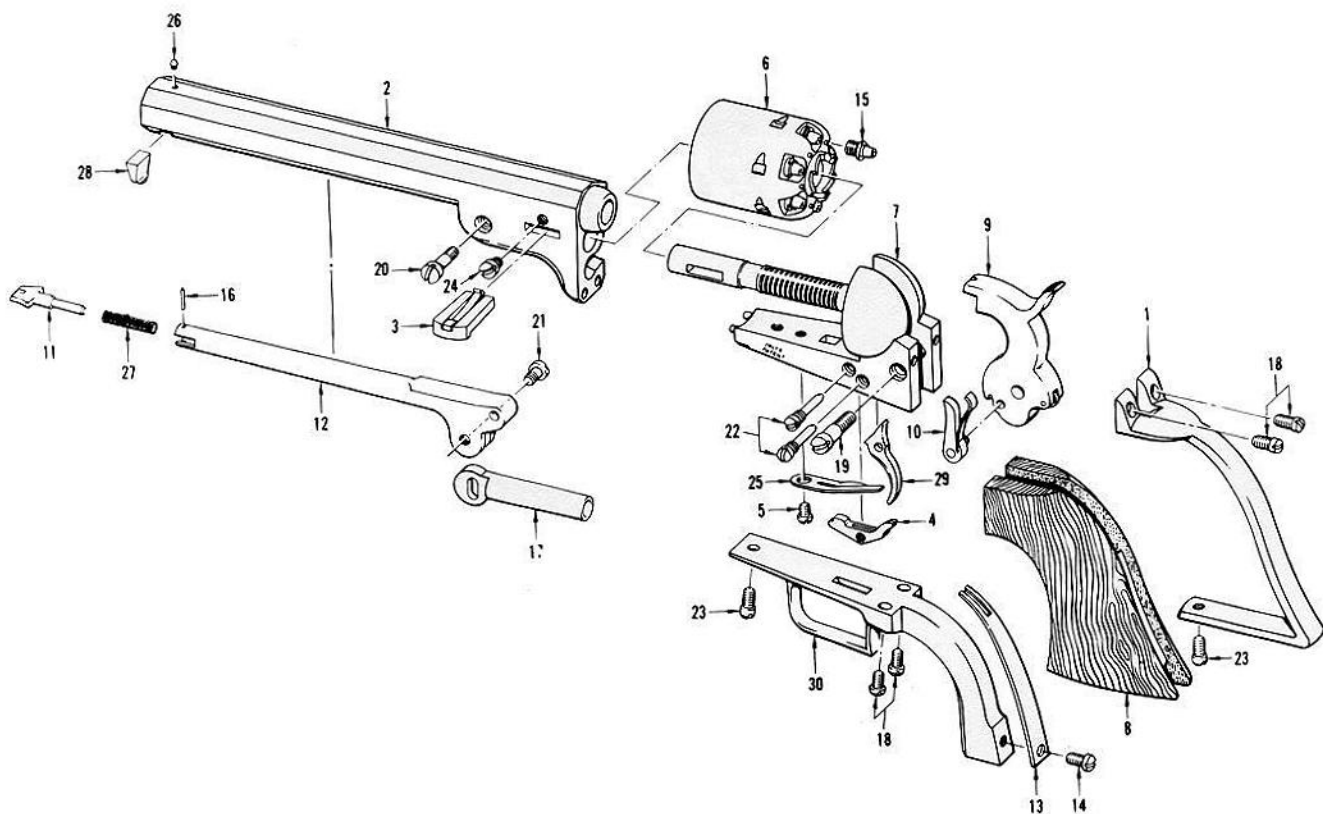


- 1 Backstrap
- 2 Barrel
- 3 Barrel Wedge Assembly
- 4 Bolt
- 5 Bolt Spring Screw
- 6 Cylinder Assembly
- 7 Frame
- 8 Grip
- 9 Hammer
- 10 Hand & Spring Assembly
- 11 Latch, Loading Lever
- 12 Lever, Loading
- 13 Mainspring
- 14 Mainspring Screw
- 15 Nipple

- 16 Pin, Latch Retaining
- 17 Plunger, Loading
- 18 Screw, Backstrap and Guard
- 19 Screw, Hammer
- 20 Screw, Loading Lever
- 21 Screw, Plunger
- 22 Screw, Trigger (Bolt & Trigger)
- 23 Screw, Trigger Guard & Butt
- 24 Screw, Wedge
- 25 Sear and Bolt Spring
- 26 Sight, Front
- 27 Spring, Latch
- 28 Stud, Barrel
- 29 Trigger
- 30 Trigger Guard

## MODEL "F" FRAMES

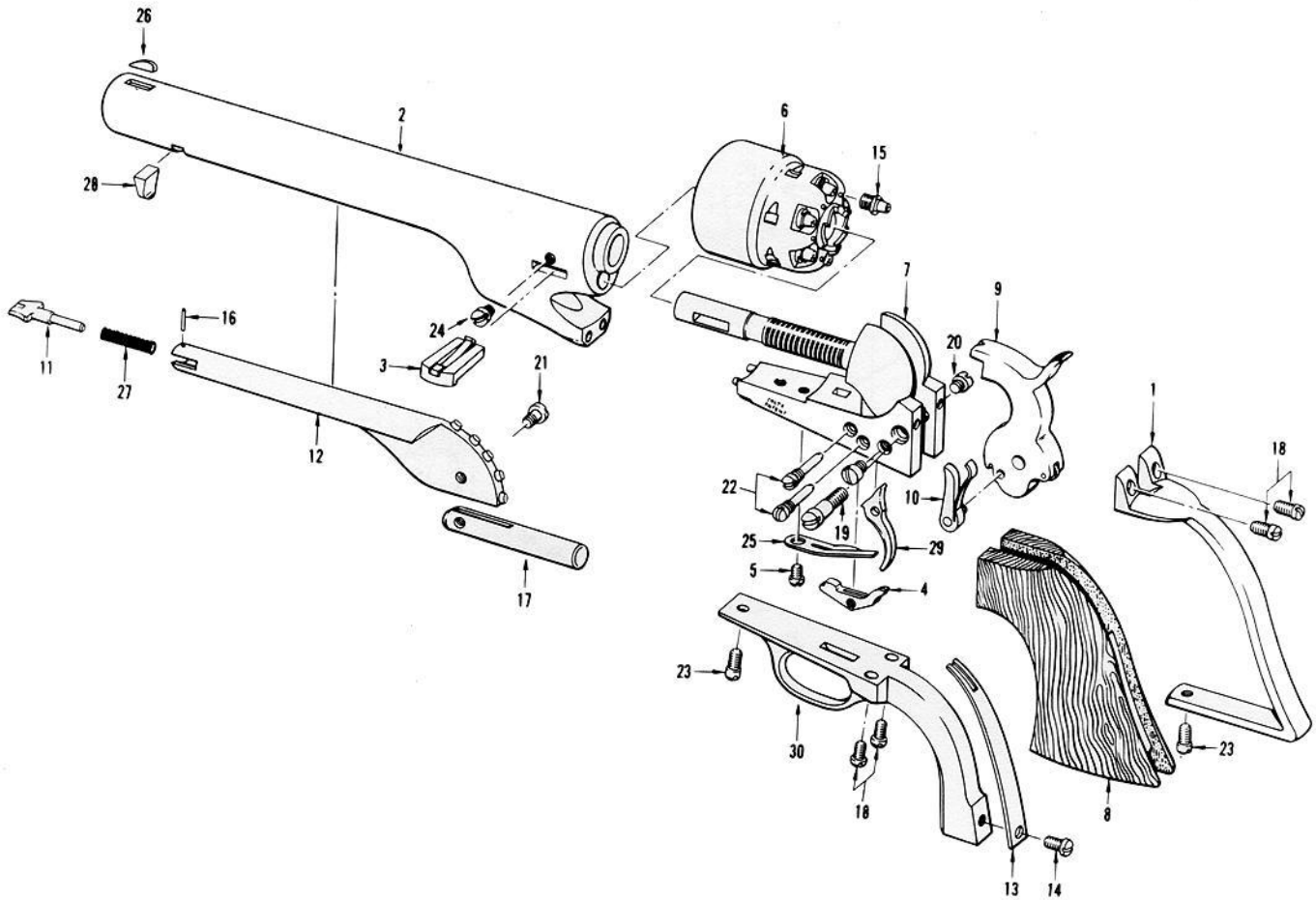
# 1851 NAVY AND 1862 POCKET NAVY REVOLVERS



1. Backstrap
2. Barrel
3. Barrel Wedge Assembly
4. Bolt
5. Bolt Spring Screw
6. Cylinder Assembly
7. Frame
8. Grip
9. Hammer Assembly
10. Hand & Spring Assembly
11. Latch, Loading Lever
12. Lever, Loading
13. Mainspring
14. Mainspring Screw
15. Nipple
16. Pin, Latch Retaining
17. Plunger, Loading
18. Screw, Backstrap & Guard
19. Screw, Hammer
20. Screw, Loading Lever
21. Screw, Plunger
22. Screw, Trigger (Bolt & Trigger)
23. Screw, Trigger Guard & Butt
24. Screw, Wedge
25. Sear & Bolt Spring
26. Sight, Front
27. Spring, Latch
28. Stud, Barrel
29. Trigger
30. Trigger Guard

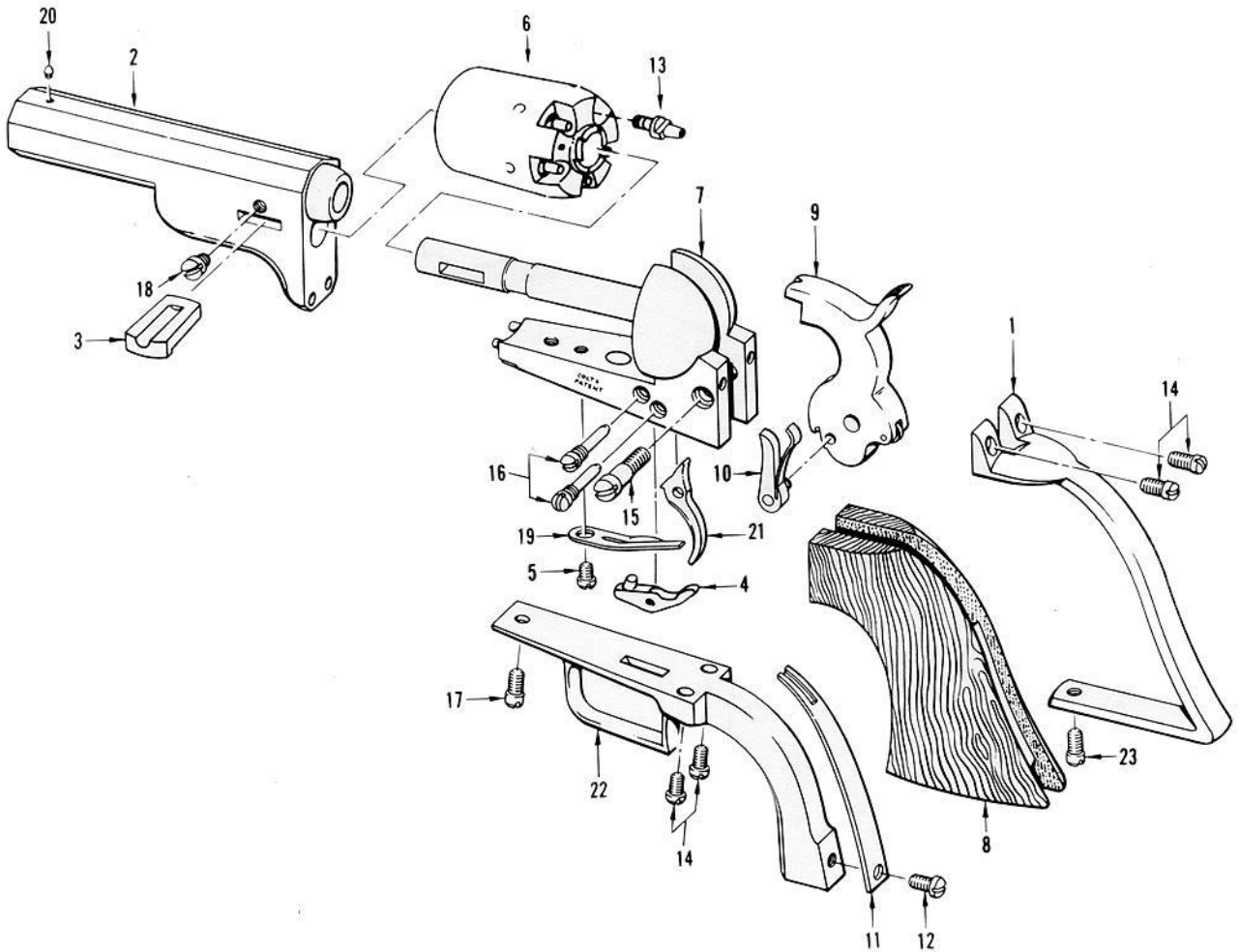
# MODEL "F" FRAMES

## 1860 ARMY, 1861 NAVY AND 1862 POLICE



1. Backstrap
2. Barrel
3. Barrel Wedge
4. Bolt
5. Bolt Spring Screw
6. Cylinder Assembly
7. Frame
8. Grip
9. Hammer Assembly
10. Hand & Spring Assembly
11. Latch, Loading Lever
12. Lever Loading
13. Mainspring
14. Mainspring Screw
15. Nipple (5) or (6)
16. Pin, Latch Retaining
17. Plunger, Loading
18. Screw, Backstrap and Guard (4)
19. Screw, Hammer
20. Screw, Guide (2)
21. Screw, Plunger
22. Screw, Trigger (Bolt & Trigger) (2)
23. Screw, Trigger Guard & Butt (2)
24. Screw, Wedge
25. Sear & Bolt Spring
26. Sight, Front
27. Spring, Latch
28. Stud Barrel
29. Trigger
30. Trigger Guard

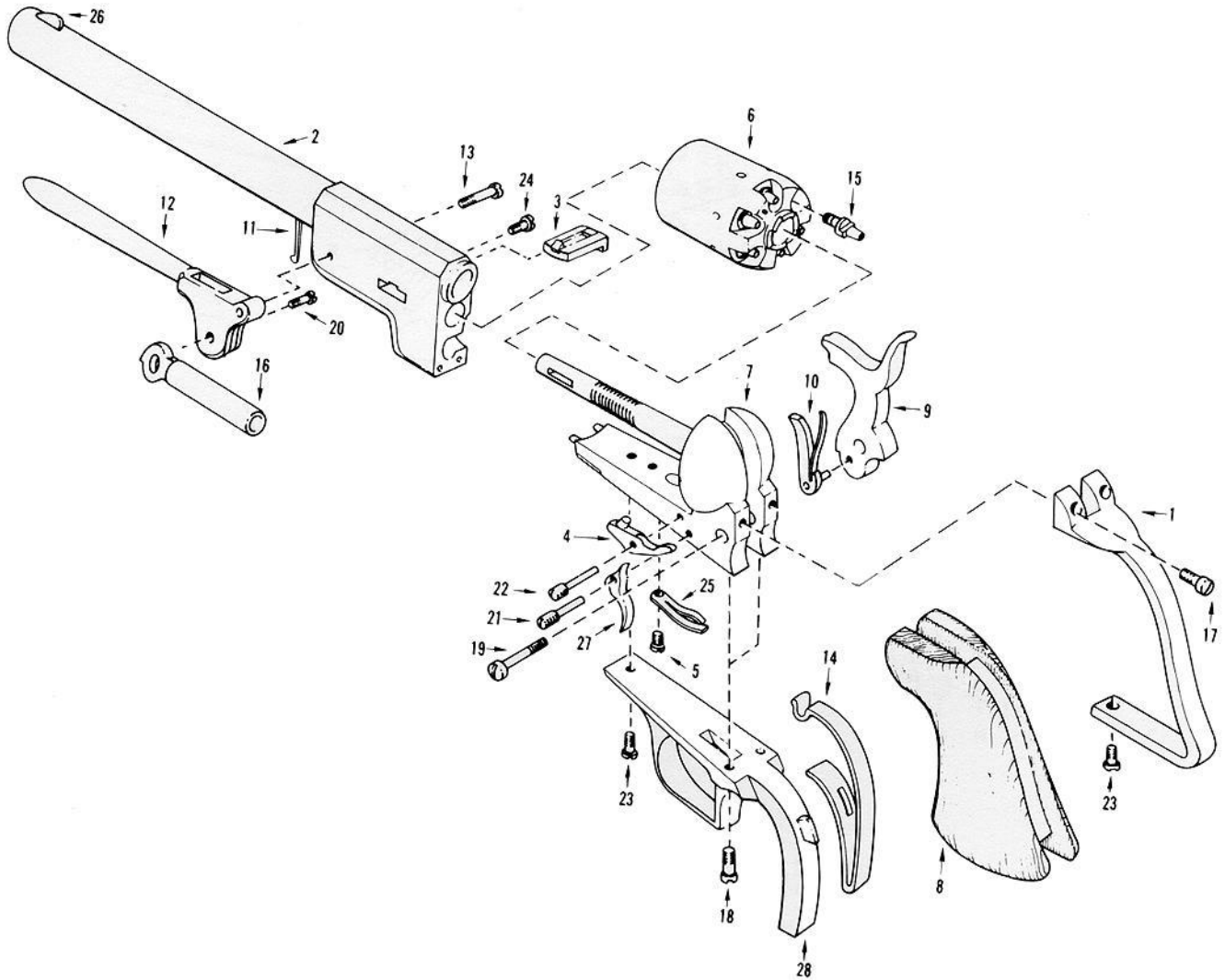
# MODEL "F" FRAMES BABY DRAGOON



- |                            |                                     |
|----------------------------|-------------------------------------|
| 1. Backstrap               | 13. Nipple                          |
| 2. Barrel                  | 14. Screw, Backstrap and Guard      |
| 3. Barrel Wedge            | 15. Screw, Hammer                   |
| 4. Bolt                    | 16. Screw, Trigger (Bolt & Trigger) |
| 5. Bolt Spring Screw       | 17. Screw, Trigger Guard & Butt     |
| 6. Cylinder Assy.          | 18. Screw, Wedge                    |
| 7. Frame                   | 19. Sear & Bolt Spring              |
| 8. Grip                    | 20. Sight, Front                    |
| 9. Hammer Assy.            | 21. Trigger                         |
| 10. Hand & Spring Assembly | 22. Trigger Guard                   |
| 11. Mainspring             |                                     |
| 12. Mainspring Screw       |                                     |

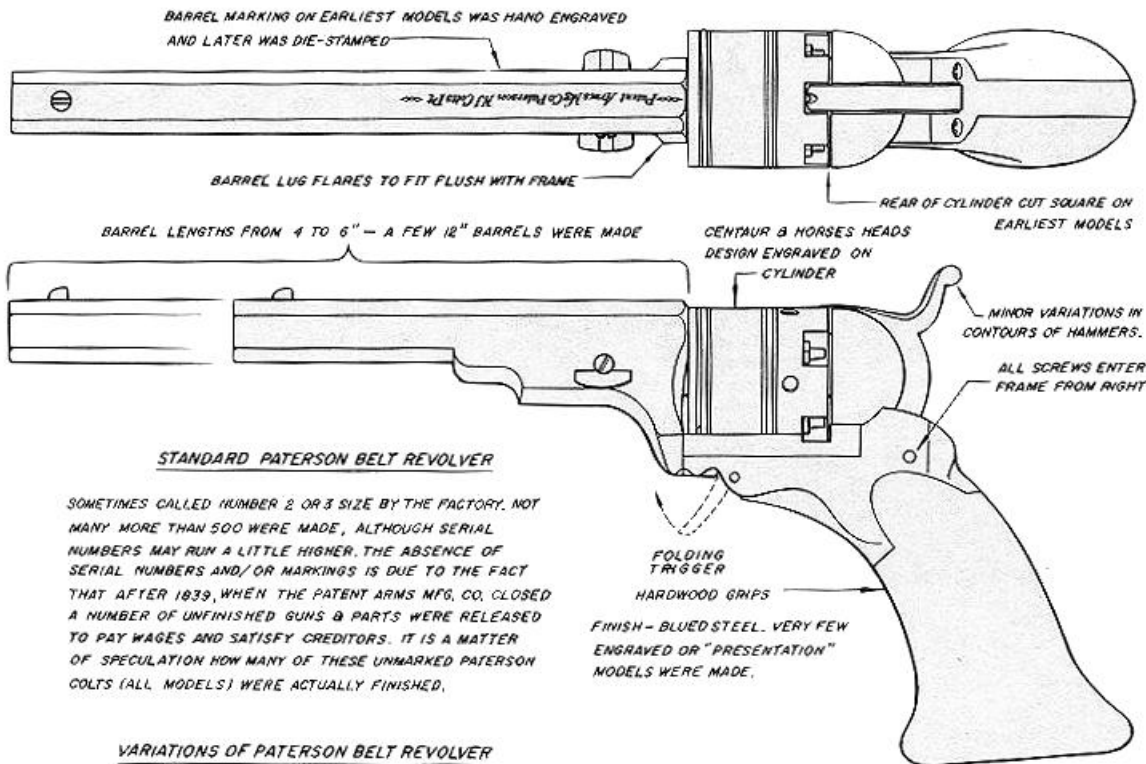
# MODEL "F" FRAMES

## COLT WALKER AND DRAGOONS

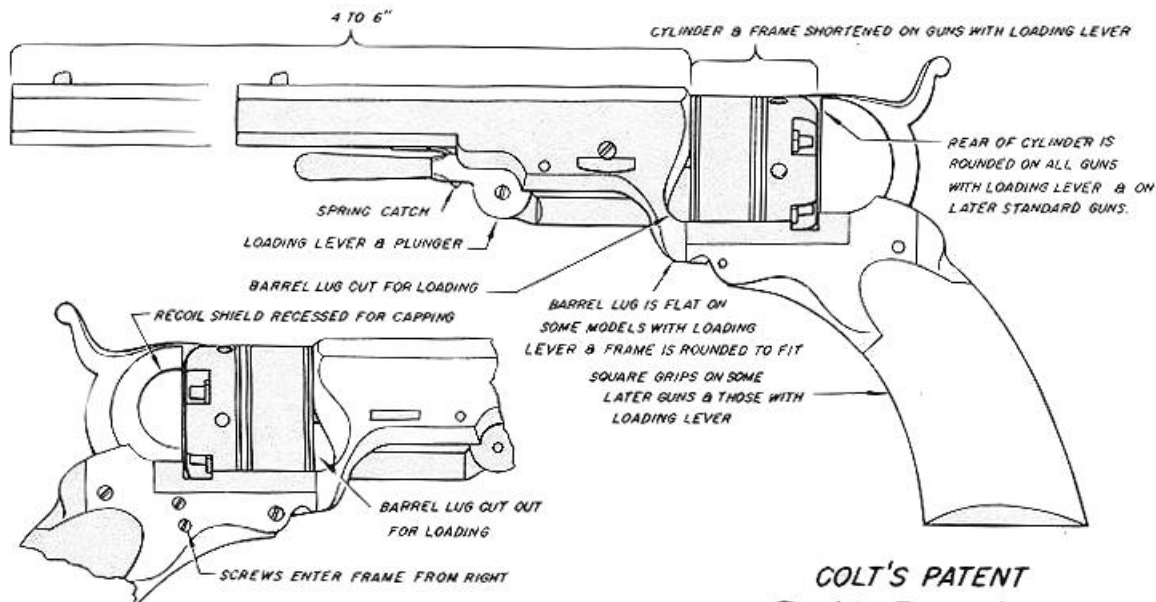


- |                           |                                    |
|---------------------------|------------------------------------|
| 1. Backstrap              | 15. Nipple                         |
| 2. Barrel                 | 16. Plunger, Loading               |
| 3. Barrel Wedge           | 17. Screw Backstrap (2)            |
| 4. Bolt                   | 18. Screw Guard (2)                |
| 5. Bolt Spring Screw      | 19. Screw Hammer                   |
| 6. Cylinder Assy.         | 20. Screw Plunger                  |
| 7. Frame Assy.            | 21. Screw Trigger                  |
| 8. Grip                   | 22. Screw Trigger (Bolt)           |
| 9. Hammer                 | 23. Screw Trigger Guard & Butt (2) |
| 10. Hand and Spring Assy. | 24. Screw Wedge                    |
| 11. Latch, Loading Lever  | 25. Sear and Bolt Spring           |
| 12. Loading Lever         | 26. Sight Front                    |
| 13. Loading Lever Screw   | 27. Trigger                        |
| 14. Mainspring            | 28. Trigger Guard                  |

# THE PATERSON COLT

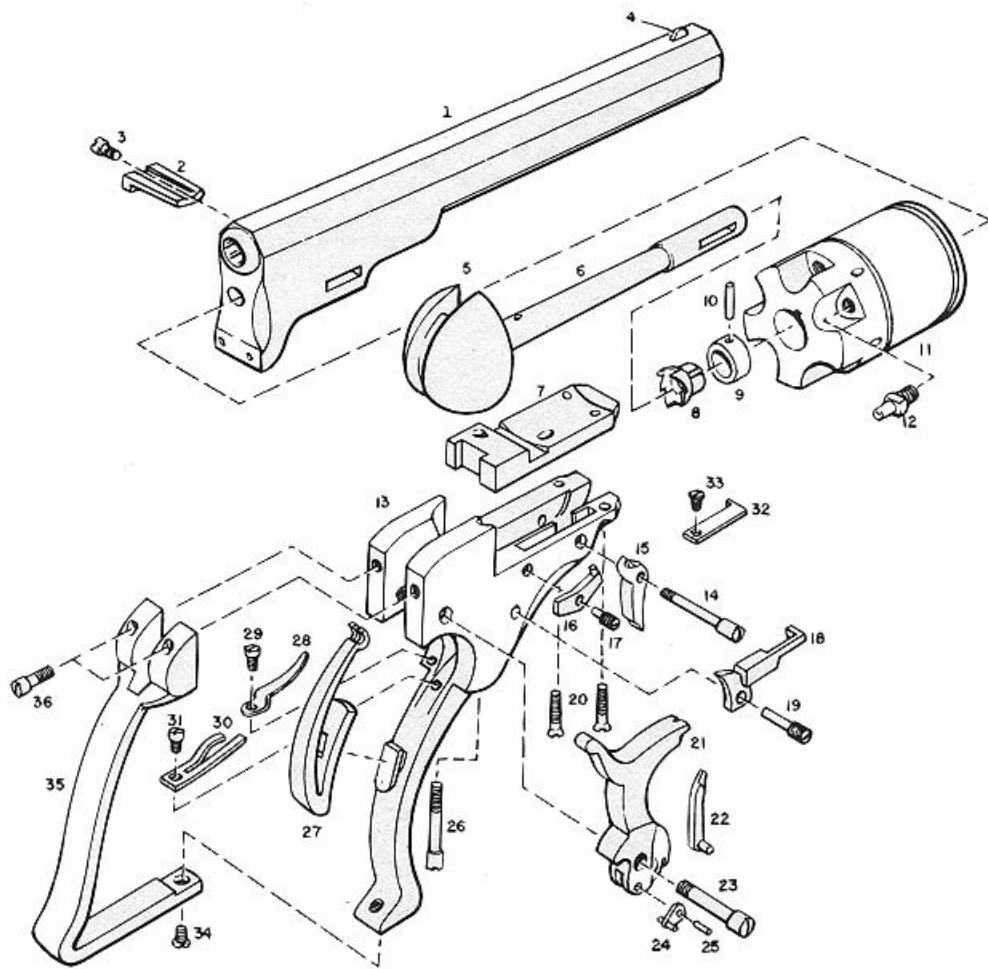


## VARIATIONS OF PATERSON BELT REVOLVER



## COLT'S PATENT Belt Revolver

CALIBER .31 & .34 - 5 SHOT  
THE PATENT ARMS MFG. COMPANY  
PATERSON, N. J.  
1836 - 1840

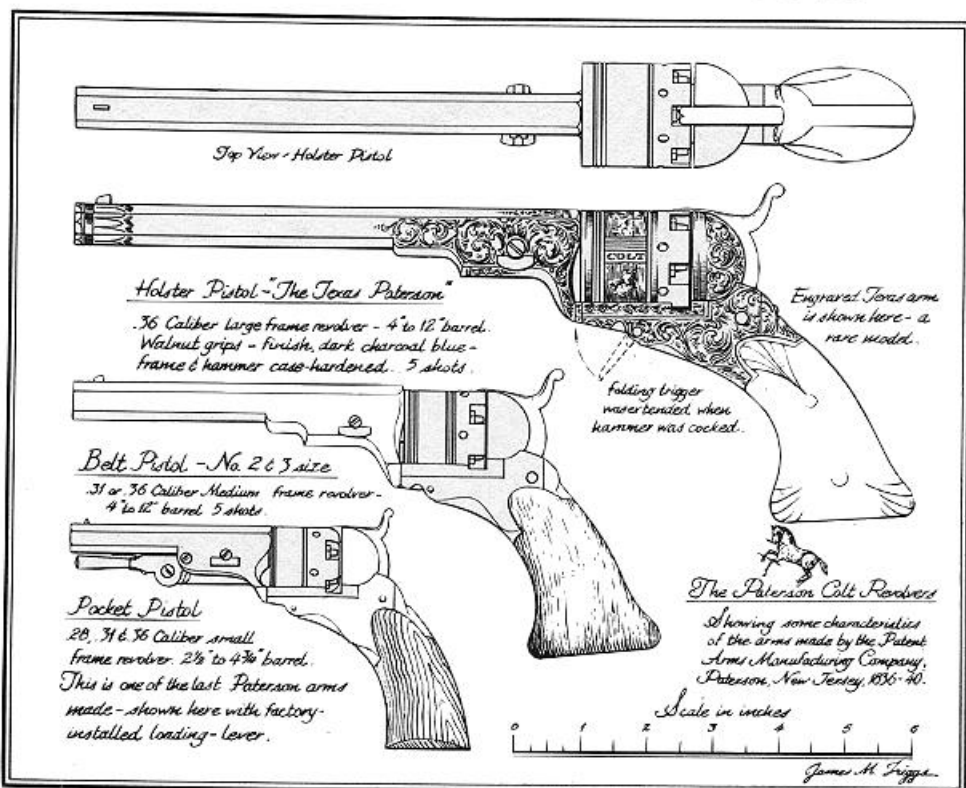


### Parts List

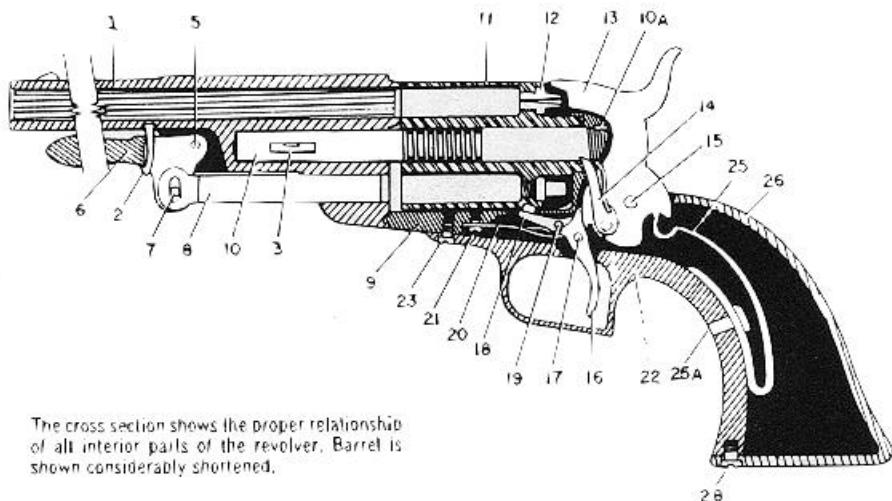
1. Barrel
  2. Wedge
  3. Wedge Screw
  4. Front Sight
  5. Recoil Shield
  6. Cylinder Arbor
  7. Frame Plate
  8. Ratchet
  9. Retaining Collar
  10. Retaining Collar Pin
  11. Cylinder
  12. Nipples (5)
  13. Frame
  14. Trigger Screw
  15. Trigger
  16. Bolt
  17. Bolt Screw
  18. Trigger Actuating Bar
  19. Trigger Actuating Bar Screw
  20. Frame Plate Screws (2)
  21. Hammer
  22. Hand
  23. Hammer Screw
  24. Stirrup
  25. Stirrup Pin
  26. Recoil Shield Screws (2)
  27. Mainspring
  28. Hand Spring
  29. Hand Spring Screw
  30. Trigger & Bolt Spring
  31. T&B Spring Screw
  32. Upper Trigger Spring
  33. Upper Trigger Spring Screw
  34. Butt Screw
  35. Backstrap
  36. Backstrap Screws (2)
- Wood grips (one piece) are not shown.

## THE PATERSON COLT

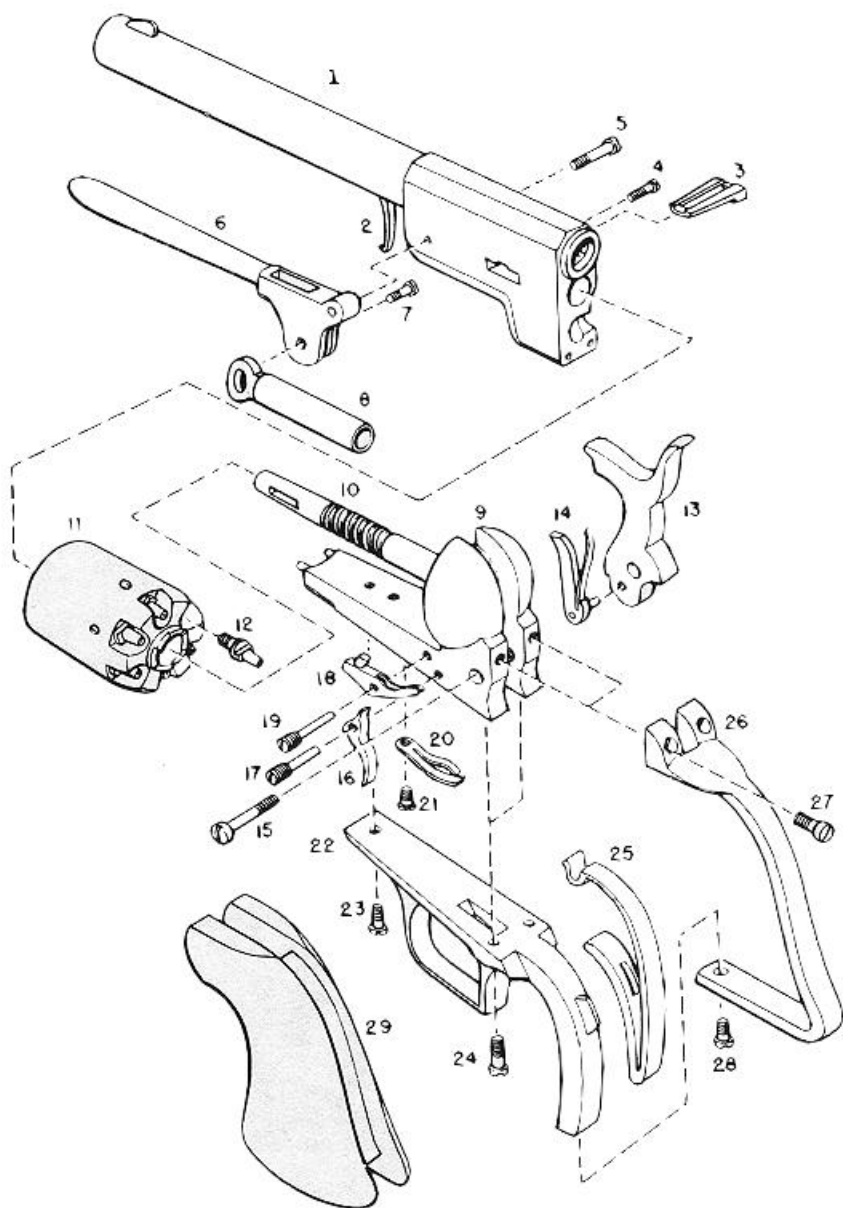
**Disassembly**—To remove barrel (1) from frame (13), remove wedge screw (3) and drift wedge (2) out of barrel from right to left. Pull barrel forward off frame and cylinder arbor (5); remove cylinder from arbor. Ratchet (8) and collar (9) are removed from arbor by drifting out retaining pin (10). Unscrew frame plate screws (20) and remove frame plate (7) from top of frame. Unscrew backstrap screws (36) and butt screw (34) and remove backstrap (35) from frame with one-piece wood grips attached. Unscrew hand spring screw (29) and remove hand spring (28) from rear of frame. Press in mainspring (27) and disengage stirrup (24) from top end of mainspring. Unscrew hammer screw (23) and remove hammer (21) and hand (22) from frame. Unscrew trigger and bolt spring screw (31) and remove spring (30). Unscrew trigger screw (14), actuating bar screw (19) and bolt screw (17) from right side of frame. Trigger (15), bolt (16) and actuating bar (18) may be removed from frame. Reassemble in reverse order.



# WALKER COLT REVOLVER



The cross section shows the proper relationship of all interior parts of the revolver. Barrel is shown considerably shortened.



## Parts List

1. Barrel
2. Loading Lever Spring
3. Wedge
4. Wedge Screw
5. Loading Lever Screw
6. Loading Lever
7. Plunger Screw
8. Plunger
9. Frame
10. Cylinder Pin
- 10A. Cylinder Pin Lock Pin
11. Cylinder
12. Nipples (6)
13. Hammer
14. Hand & Spring
15. Hammer Screw
16. Trigger
17. Trigger Screw
18. Bolt
19. Bolt Screw
20. Trigger & Bolt Spring
21. Trigger & Bolt Spring Screw
22. Trigger Guard
23. Front Guard Screw
24. Rear Guard Screw (2)
25. Mainspring
- 25A. Mainspring Stud
26. Backstrap
27. Backstrap Screw (2)
28. Butt Screw
29. Stock, one-piece, wood

**Disassembly**—To remove barrel & loading lever assembly, loosen wedge screw (4) and drive wedge (3) gently out from left to right. Draw barrel (1) off cylinder pin (10). Loading lever (6) and plunger (8) are removed by removing screws (5, 7). Do not attempt removal of loading lever spring (2). Pull cylinder (11) forward off cylinder pin (10). Remove backstrap screws (27) and butt screw (28) and lift off backstrap (26) and wood stock (29). Remove front and rear guard screws (23, 24) and drop trigger guard (22) and mainspring (25) away from frame (9). Remove trigger & bolt spring screw (21) and spring (20). Remove trigger and bolt screws (17, 19) and drop trigger (16) and bolt (18) out bottom of frame. Remove hammer screw (15) and draw hammer (13) with hand and spring (14) intact. Cylinder pin (10) is fixed into frame by the small pin (10A) which can only be removed by drilling. Removal of cylinder pin is not recommended. Reassemble in reverse order.