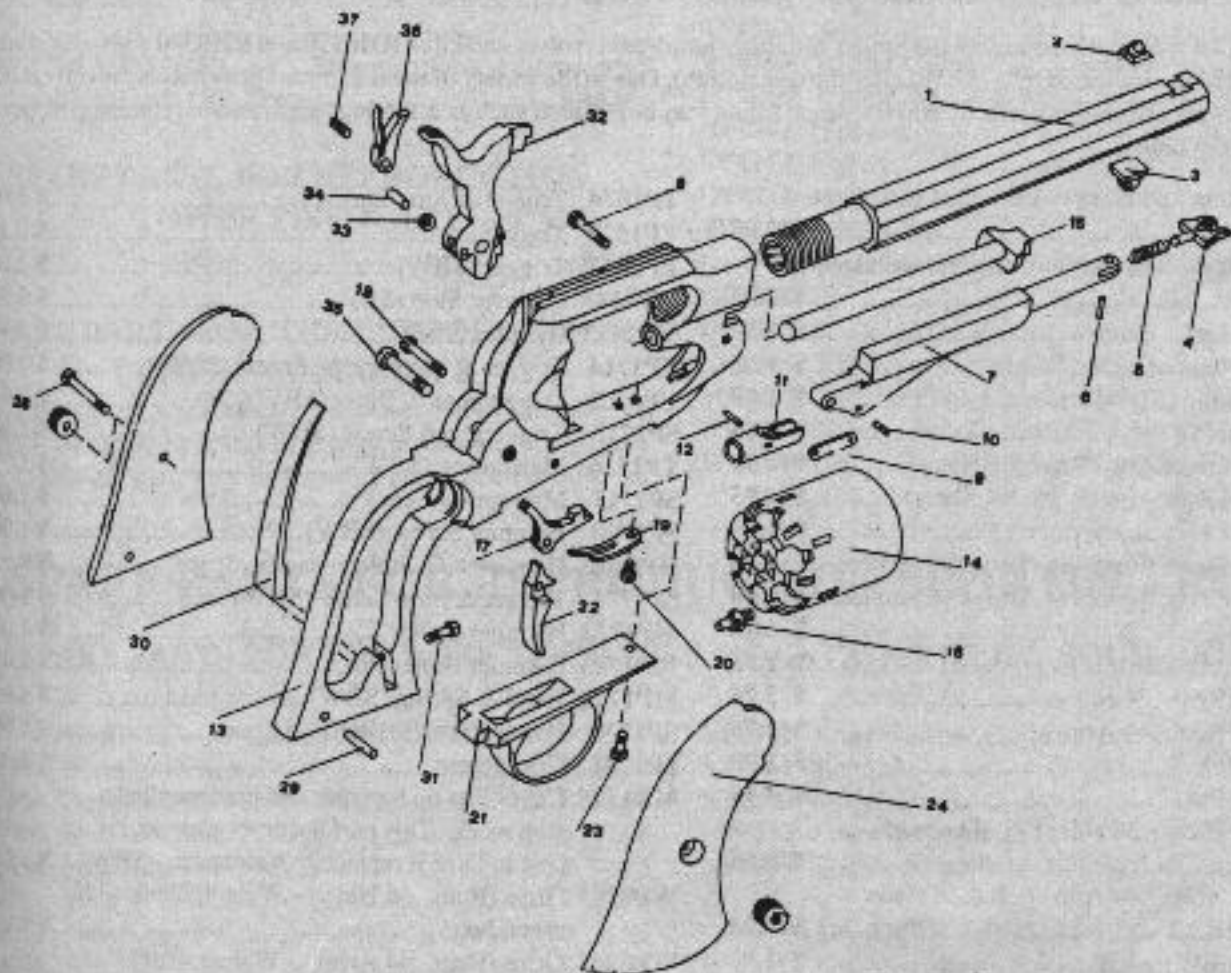


REMINGTON PARTS DIAGRAM



Do not order from these part numbers. Please refer to the proper stock numbers on the following pages.
Thank you!

Remington Revolver Diagram - Parts List

- | | | |
|------------------------|---------------------------------|-----------------------|
| 1. Barrel | 12. Plunger Pin | 24. Grips |
| 2. Front Sight | 13. Frame | 28. Grip Screw |
| 3. Loading Lever Catch | 14. Cylinder | 29. Grip Pin |
| 4. Loading Lever Latch | 15. Cylinder Pin | 30. Mainspring |
| 5. Catch Spring | 16. Nipple | 31. Mainspring Screw |
| 6. Catch Pin | 17. Cylinder Stop | 32. Hammer |
| 7. Loading Lever | 18. Trigger & Stop Screw | 33. Hammer Roller |
| 8. Loading Lever Screw | 19. Trigger & Stop Spring | 34. Hammer Roller Pin |
| 9. Link | 20. Trigger & Stop Spring Screw | 35. Hammer Screw |
| 10. Link Pin | 21. Triggerguard | 36. Hand & Spring |
| 11. Plunger | 22. Trigger | 37. Hand Screw |
| | 23. Triggerguard Screw | |