

THE EYES HAVE IT!

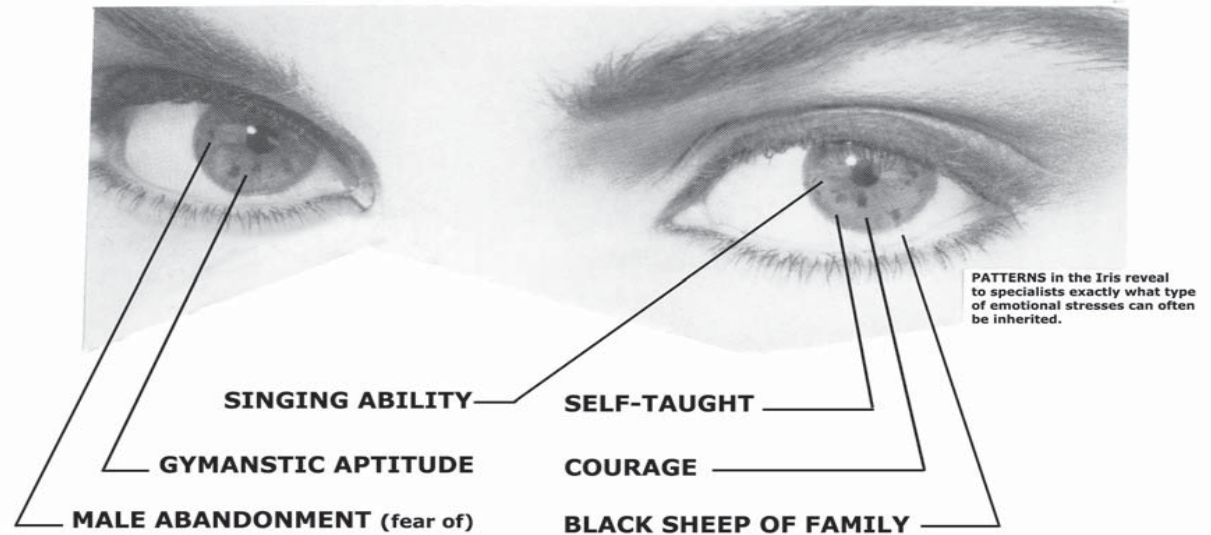
Rev. Michael Phillips, ULC has identified and diagnosed every kind of emotional state from anger to a lack of nurturing simply by looking into the colored part of peoples eyes.

"The eyes are the windows to the soul" he says, and observes that people always have more patterns in one eye than the other. For example, more patterns in the right eye gives you a preference for sleeping on the right side and usually a closer relationship with your father. It also gives a predisposition toward left brain dominance.

The Los Angeles Master Teacher is one of many who believe that your eyes have video-taped your entire family history, all the way-back from your great grand parents to you in the present. The information includes your family strengths, vulnerabilities and even what type of mate you will attract in a relationship.

Diagnosing physical health by looking into the eyes is called Iridology and is certainly nothing new. The ancient Chinese and Egyptians knew of this technique and used it often. However, what has been missing until now, is the spiritual/psychological connection provided by a new and fascinating discovery called BIA or (Behavioral Iris Analysis)

Looking in the eye for patterns of behavior has a long history with many insights from the world over, and it is fast becoming recognized as one of the most verifiable and objective techniques to be introduced in the mental health field in many years.



Experts like Phillips and child psychologist Hester Lewis at Harvard University agree and have found it to be extremely accurate. Using this method, specialists can see more of what makes you tick in one hour than is possible to achieve with months of traditional counseling.

"Clients today now have the advantage of saving huge sums of money and time. We can help a person get right to their core issues, and they can spend more time working on balance suggestions," says Phillips, president of the Association of Ocular Sciences.

Explore your own eye in a bright light at your bathroom mirror. The pattern of dots, wispy openings that may look like a fish netting or straight thin thread-like fibers correlate to the mental, emotional and hands on behavior patterns. Different segments of the iris reveal key emotional and spiritual issues (see above photo).

As a result, BIA Specialists say they can provide doctors with deeper insight into the nature of disease that only the mind can alter. For example, the lymphatic system is responsible for removing slow-moving toxins from the body.

BIA Specialists claim that if they can see this condition in the eye, which means the client has a tendency to hang on to the emotional problems/garbage of other people for too long, which in turn, teaches their *body* to unconsciously hold on to its own garbage at the physical level.

Understanding and integrating this mental connection with the physical, allows a free flow of energy for healing, showing how the body-mind system works together as one unit.

For further information or classes, contact:
Michael Phillips
at the Monastery of Herbs 818.360.4871



Contained within the iris of the eye is a code which represents all the gifts you were given through your family tree. Your eye had recorded everything that has ever happened to you. These iris patterns contain the pathway that shows the exact plan for your inner fulfillment.

Often, in life, we focus on our limitations, in a Eye reading a specialist will reveal exciting information that has been locked-up in the family tree and may be ready to be used by you! Patterns of self-defeating behavior can be fixed! Once you know where you're coming from, you can really surge forward with your life.

Upon completing your Eye Reading, I promise:

1. Your relationship with yourself will be enhanced.
2. You will discover your particular learning mode, which when stimulated, eases your ability to grasp information.
3. Your creative abilities will be confirmed or revealed.
4. You will experience greater self-confidence.



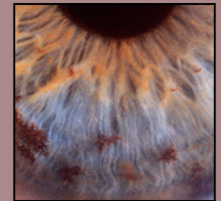
For Seminars or Eye Reading sessions Call:

THE EYES HAVE IT!

What Do Your Eyes Reveal?

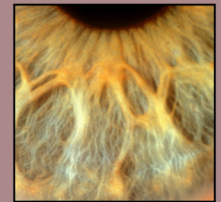
JEWEL

(Focused and analyzing)



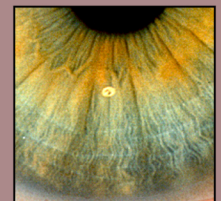
FLOWER

(Emotional and Flowing)



STREAM

(Sensitive and Intuitive)



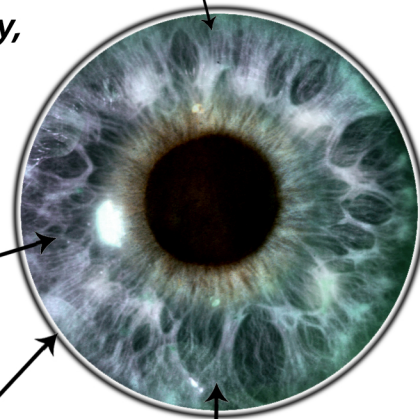
"FOR EVERY LESSON THERE IS A GIFT ; FOR EVERY LIFE PATTERN A THERAPY"

RIGHT EYE represents your relationship with your father, the genetic gifts from his side of the family, and your relationship with him.

LEFT EYE represents your relationship with your mother, the genetic gifts from her side of the family, and your relationship with her.

STUBBORNNESS:

inflexible, resistant. The gifts are: Diplomacy, persistence, tenacity, fortitude, and longevity.



NURTURING:

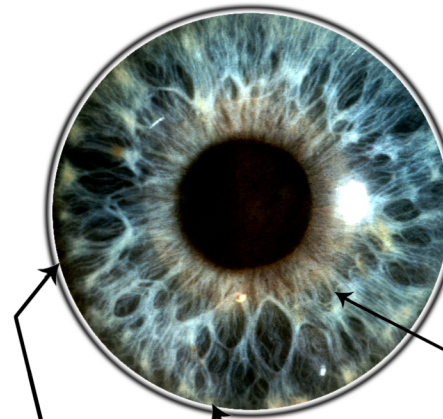
An absence of touching in childhood causes fears of rejection as an adult. The gift is independence of spirit and increased verbal ability.

TECHNICAL WRITING:

Word creativity, encouraging and assurance of others. The lesson is to overcome intolerance and impatience.

RESENTMENT:

Resentment towards father can cause masochistic addiction, fear of failure and restlessness. The lesson is forgiveness and the ability to receive love. The gifts are: Independence, ambition, leadership, adventure and prescience.



SEPARATION FROM MOTHER:

Causes grief, sorrow and anguish as a child. gives the gift of compassion, empathy, sensitivity and tenderness as an adult.

JEALOUSY:

If this is a repeated pattern, there is also a fear of poverty. the spiritual lesson is generosity and the therapy is sharing of self, fraternity and practice of benevolence.

Pride Lessons are inflexible, tight, derogatory. Gifts: flexibility, stability, achievement, revelation, survivor qualities and resiliency.

CREATIVE DRAWING:

Dexterity, imagination, craftsmanship; through drawing, creative people raise their self-esteem.