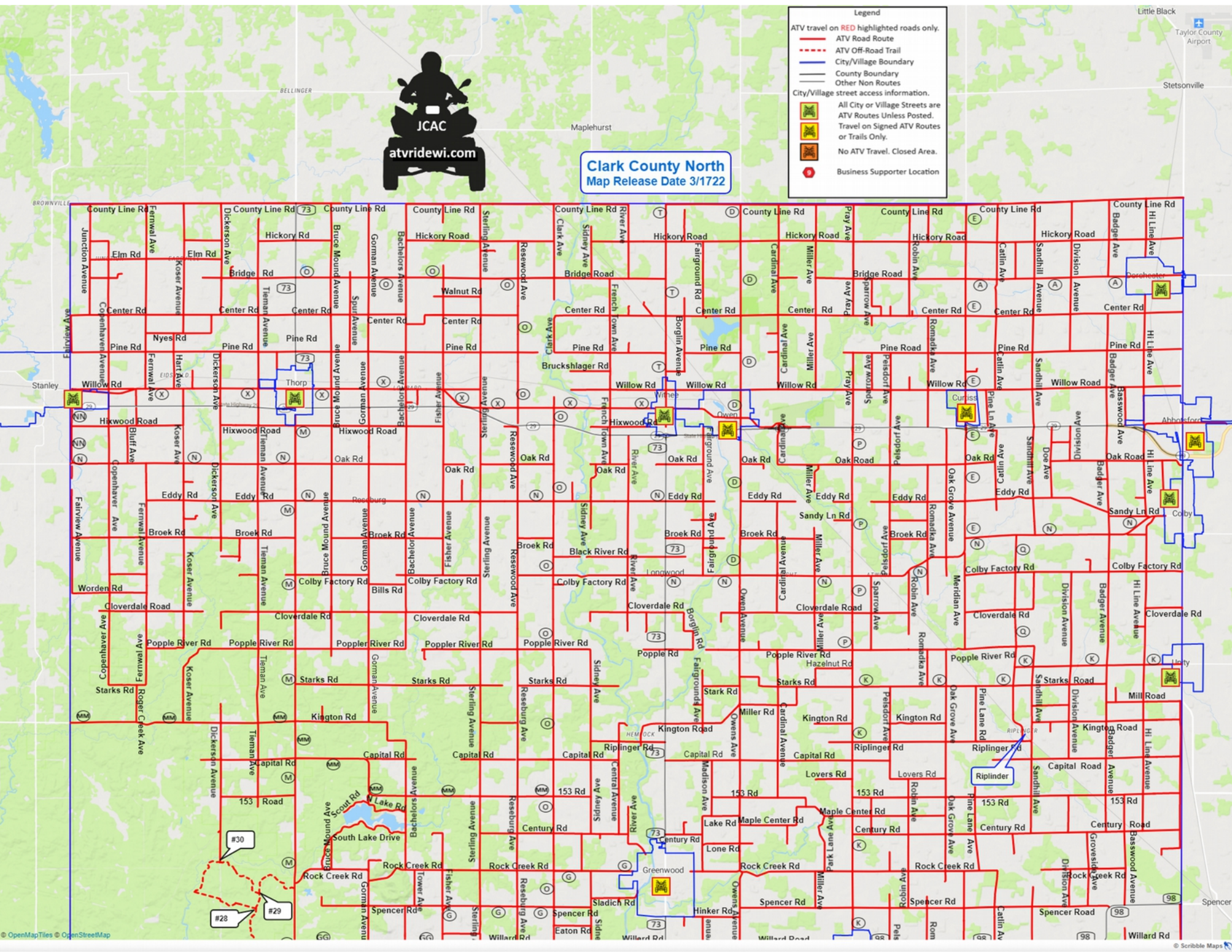


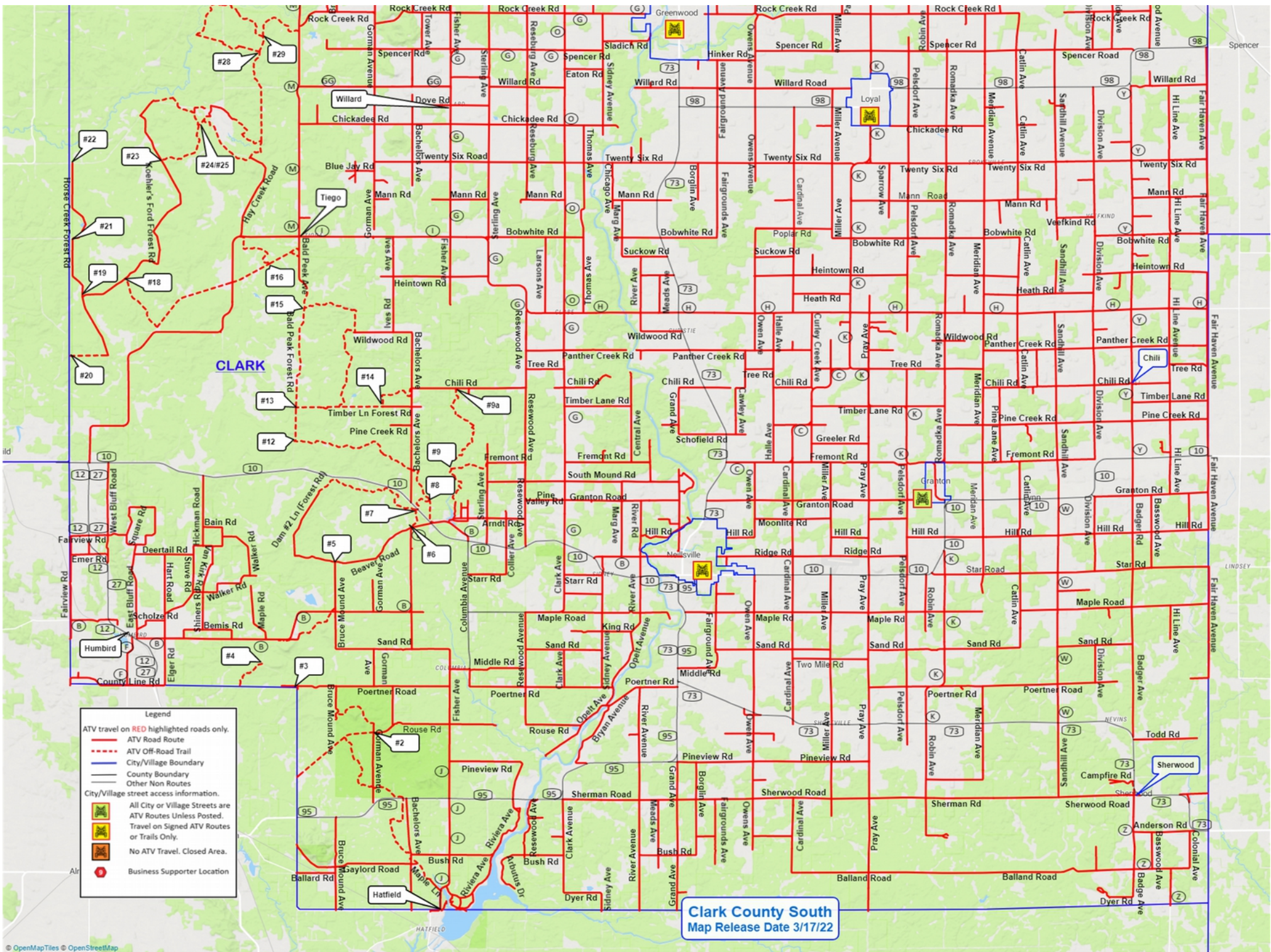


Clark County North Map Release Date 3/1722

Legend

- ATV travel on RED highlighted roads only.
- ATV Road Route (Red solid line)
- ATV Off-Road Trail (Red dashed line)
- City/Village Boundary (Blue outline)
- County Boundary (Black outline)
- Other Non Routes (Grey line)
- City/Village street access information.
- All City or Village Streets are ATV Routes Unless Posted. Travel on Signed ATV Routes or Trails Only.
- No ATV Travel. Closed Area. (Yellow square with 'X')
- Business Supporter Location (Red circle with 'S')





Legend

- ATV travel on RED highlighted roads only.
- ATV Road Route
- ATV Off-Road Trail
- City/Village Boundary
- County Boundary
- Other Non Routes

City/Village street access information.

- All City or Village Streets are ATV Routes Unless Posted.
- Travel on Signed ATV Routes or Trails Only.
- No ATV Travel. Closed Area.
- Business Supporter Location

Clark County South
Map Release Date 3/17/22