

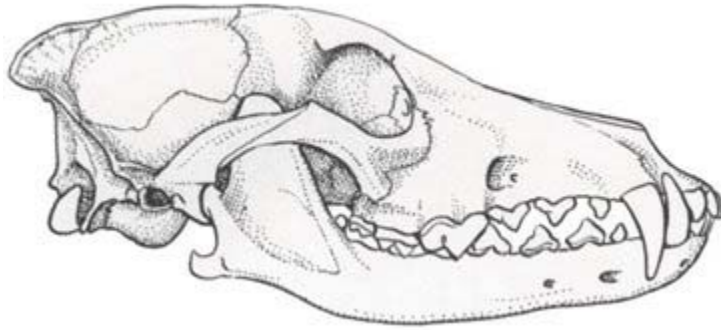


Smithsonian
National Museum of Natural History

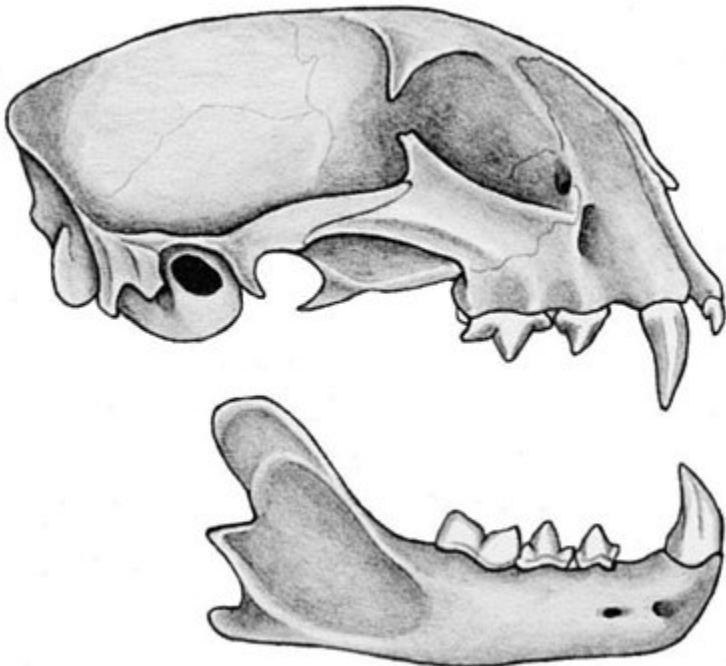
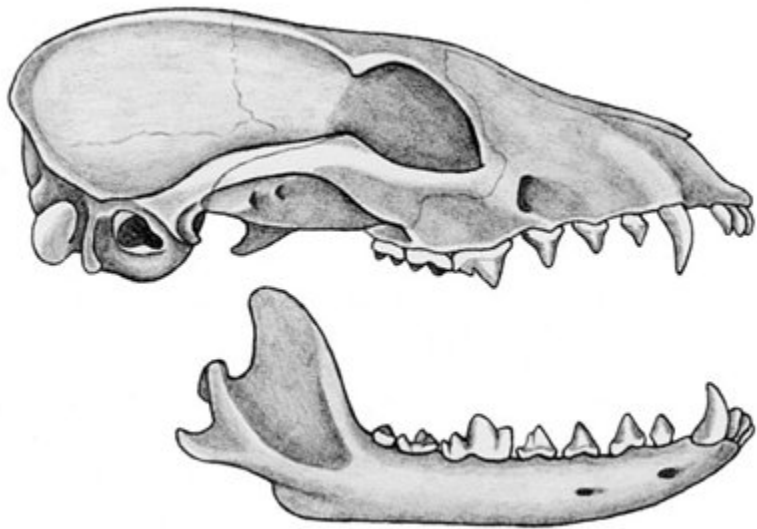
North American Mammals

SKULLS & TEETH

Coyote



Common Gray Fox



Bobcat

Bones and Teeth – Bob cat



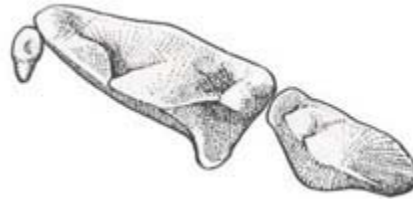
Top (proximal) and bottom (distal) ends of the femur. [Click to enlarge.](#) (6kb)



Left lower carnassial tooth (left), with two adjacent premolars (right). [Click to enlarge.](#) (9kb)

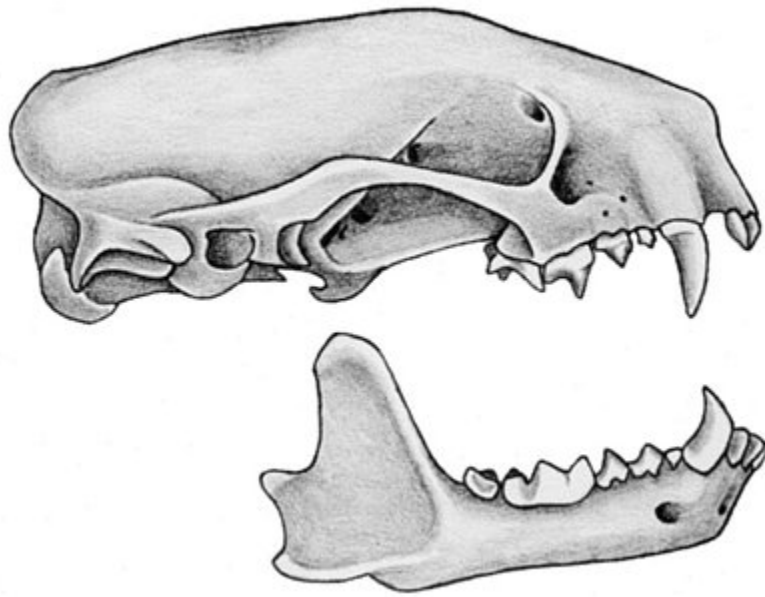


Right shoulder blade. [Click to enlarge.](#) (10kb)

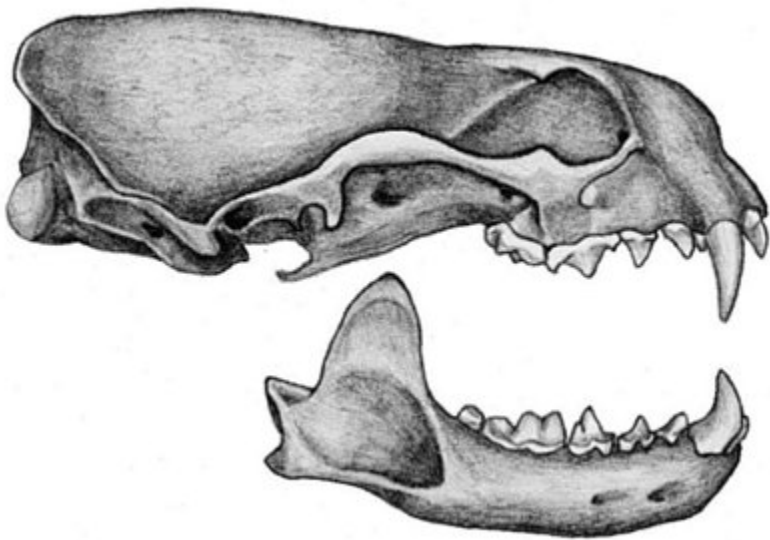


Right upper carnassial (center) tooth, with adjacent premolar (right) and molar. [Click to enlarge.](#) (11kb)

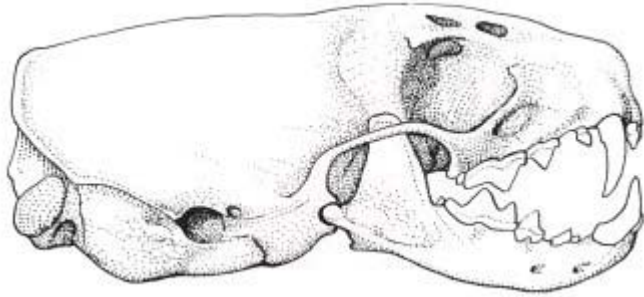
**White Striped
Skunk**



Northern River Otter



Least Weasel



Bones and Teeth – Least Weasel

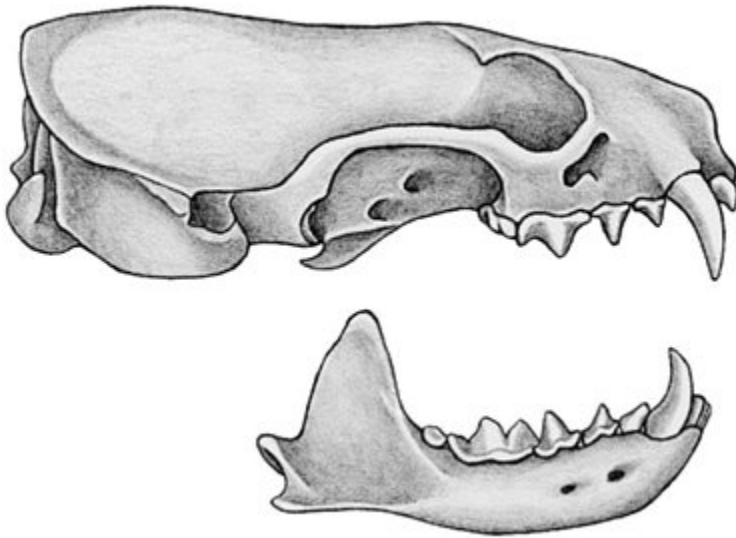


Right lower carnassial tooth (second from left), with adjacent molar (far left) and three adjacent premolars (right). [Click to enlarge.](#) (6kb)

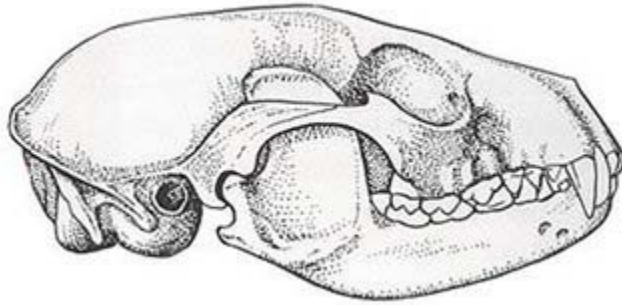


Left upper carnassial tooth (second from left), with adjacent molar (far left) and two adjacent premolars (right). [Click to enlarge.](#) (9kb)

American Mink



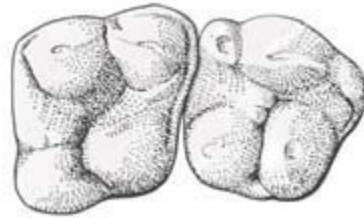
Northern Raccoon



Bones and Teeth – Northern Raccoon

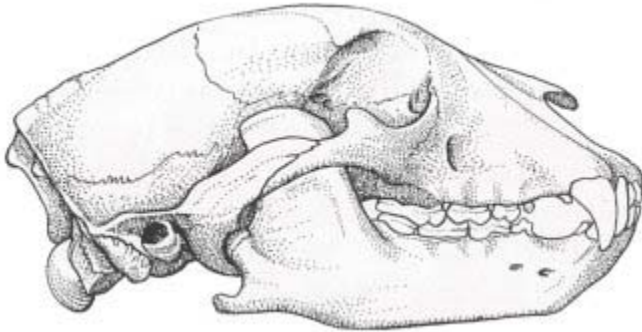


Left lower first and second molars (right to left).
[Click to enlarge. \(14kb\)](#)

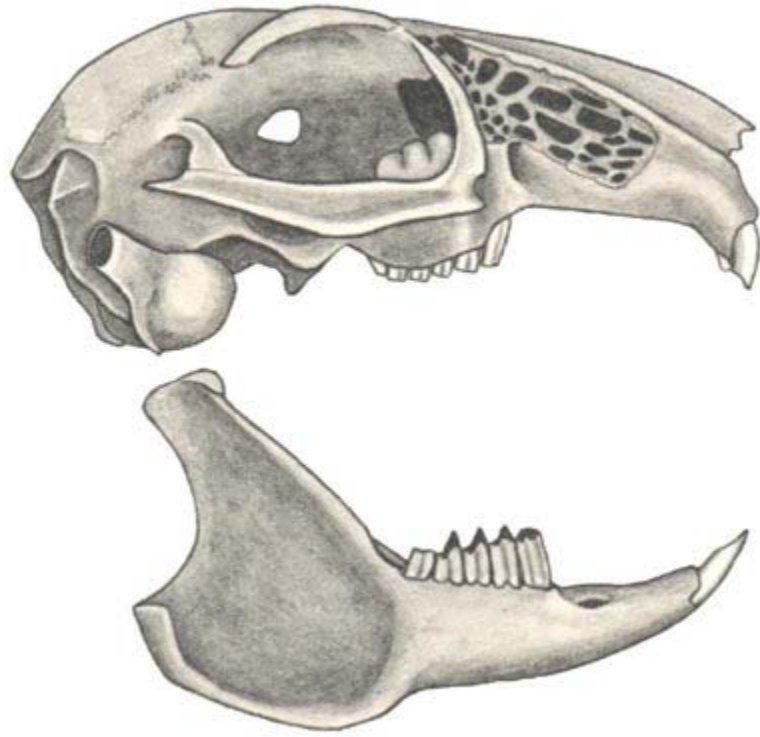


Right upper premolar and first molar (right to left). [Click to enlarge. \(19kb\)](#)

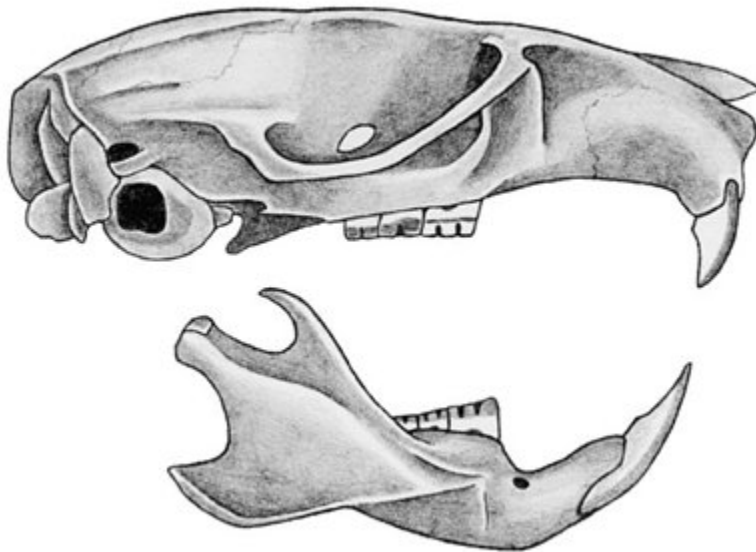
American Black Bear



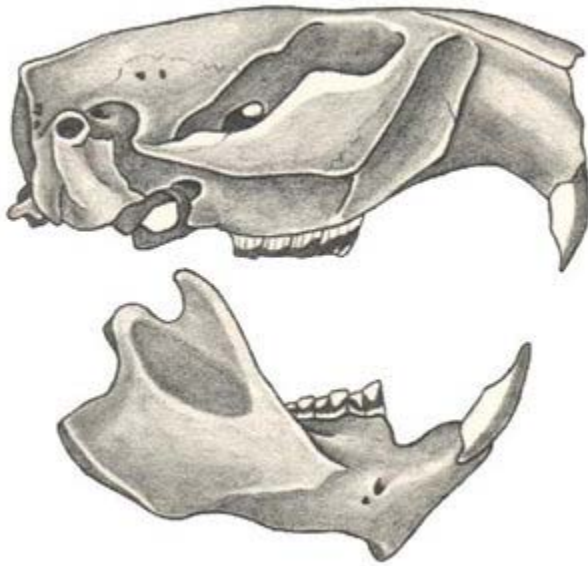
Eastern Cottontail



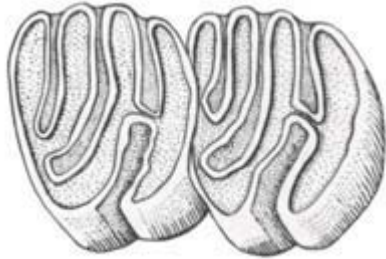
Eastern Woodrat



American Beaver



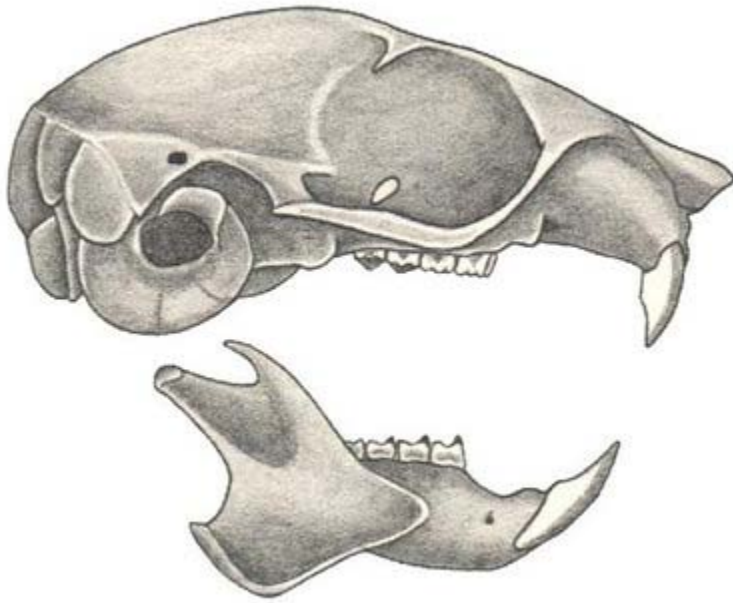
Bones and Teeth – American Beaver



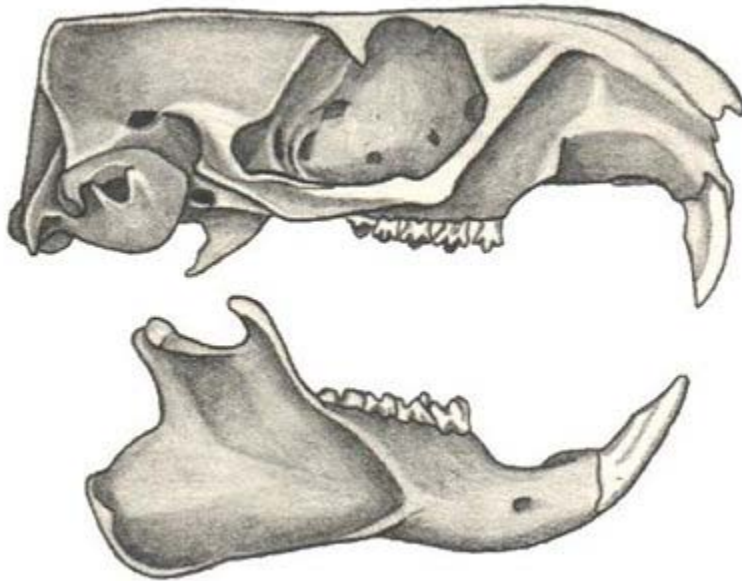
First two right upper molars (right to left),
with dentine stippled and enamel unshaded.

[Click to enlarge. \(23kb\)](#)

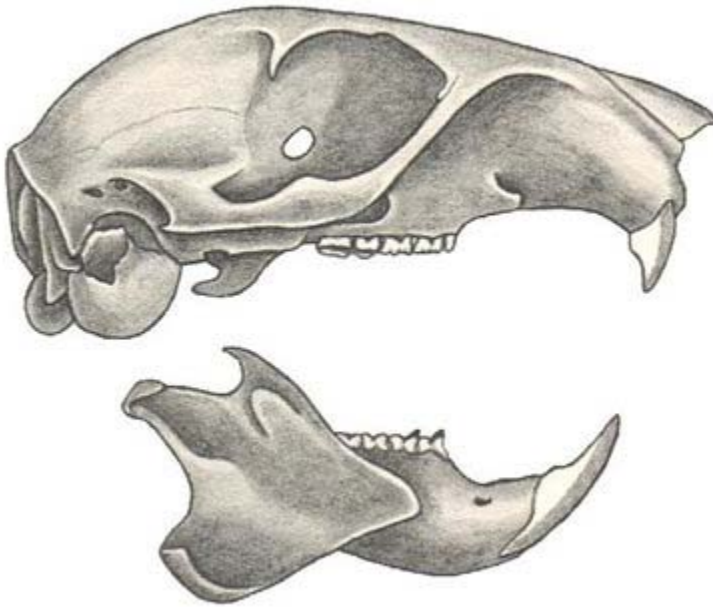
**Southern Flying
Squirrel**



Woodchuck



Eastern Grey Squirrel



Chipmunk

