

Tree Decay

An Expanded Concept

**United States
Department of
Agriculture
Forest Service**

Information
Bulletin Number 419

April 1979



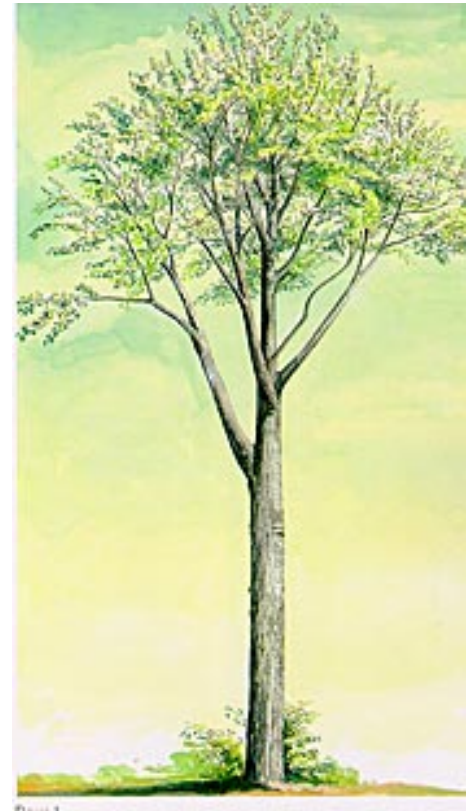


Table of Contents

[Introduction](#)

[An Understanding of Site Relationships](#)

[An Understanding of Gradations](#)

[Microorganisms Become Established in Succession](#)

[Tree Compartments](#)

[The Classical Concept of Tree Decay](#)

[The Expanded Concept of Tree Decay](#)

[Patterns of Compartmentalization and Successions](#)

[Wounds are of Two Major Types](#)

[Patterns of Discolored and Decayed Wood](#)

[Some Variations and Exceptions](#)

[Additional Details on the Expanded Concept of Tree Decay](#)

[Wood is Altered By Microorganisms](#)

[Series of Paintings - Into a Tree - Through a Wound](#)

[Series of Paintings II](#)

[In The End](#)

Watercolor illustrations by
David M. Carol
Warner, New Hampshire

For sale by the Superintendent of Documents, U.S. Government
Printing Office
Washington D.C. 20402
Stock Number 001-000-03937-7

Formatted for the Internet - August 1997

TREE DECAY

An Expanded Concept

Alex L. Shigo

Plant Pathologist, U.S.
Department of Agriculture, Forest
Service, Northeastern Forest
Experiment Station, Durham,
New Hampshire.

This publication is the final one in a series on tree decay developed in cooperation with Harold G. Marx, Research Application Staff Assistant, U.S. Department of Agriculture, Forest Service, Washington, D.C.

The purpose of this publication is to clarify further the tree decay concept that expands the classical concept to include the orderly response of the tree to wounding and infection-compartmentalization-and the orderly infection of wounds by many microorganisms-successions. The heartrot concept must be abandoned because it deals only with decay-causing fungi and it states that these fungi grow unrestricted through heartwood after infection of fresh wounds. The heartrot concept emphasizes descriptions of decay-causing fungi and types of decayed wood. It describes disordered wood and events that occurred in the past. The expanded decay concept emphasizes the order of a compartmented tree, the order of compartmentalization, and the order of successions. Regulation of discoloration and decay depends on understanding compartmentalization and successions.

**United States
Department of
Agriculture**

Forest Service

Agriculture Information
Bulletin Number 419
April 1979

Figure 9



Figure 8

Tree Decay Can Be Beneficial...

Recycling dead organic matter essential for life of new trees; providing food and shelter for wildlife and many other microorganisms; decreasing the potential for fire.(fig.2)

Figure 2



Or Destructive...

Reducing the strength and value of trees and wood products; decreasing the attractiveness of trees.(fig.3)

Figure 3



Decay Is a Natural Recycling Process...

Cell walls are digested; strength of wood is reduced.(fig 4)Decayed wood is the RESULT of the process.(fig.5)Tree decay involves interactions among trees,which are the tallest, greatest in mass and longest-lived organisms ever to inhabit the earth, and microorganisms-(fig.6)primarily bacteria and fungi-which are some of the smallest organisms on earth.



Figure 4



Figure 5

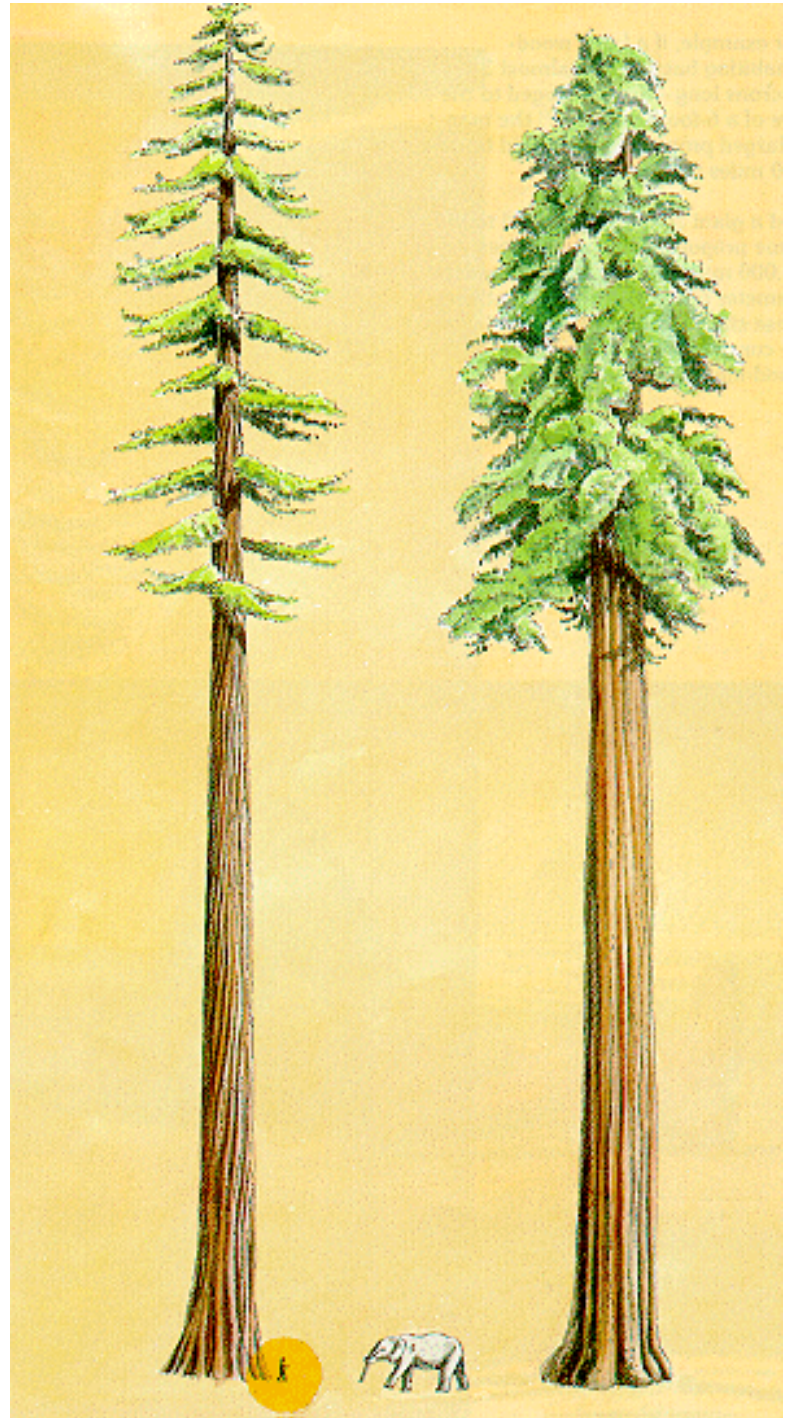


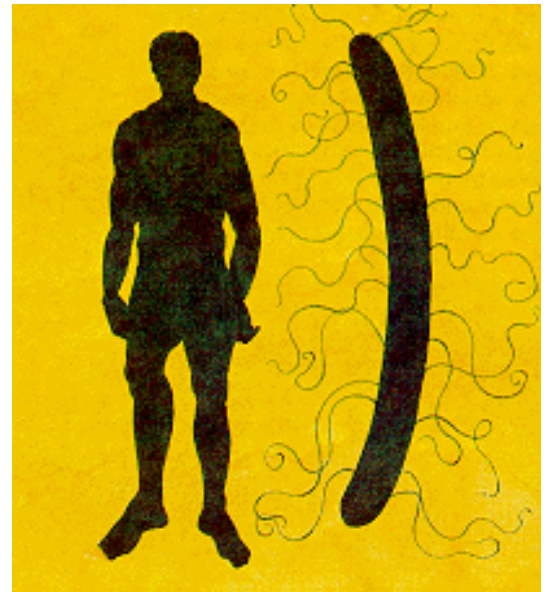
Figure 6

To Understand the Decay Process it is Necessary to Understand Size Relationships.

For example,if a large wood-inhabiting bacterium-almost 3 microns long-were enlarged to the size of a 6-foot man.(fig.7)the man enlarged proportionately would be over 700 miles tall!(fig.8)

Figure 7

And a giant redwood enlarged to the same proportions would be over 40,000 miles tall,(fig 9) five times the diameter of the earth! We must keep these size relationships in mind when we consider ways to deal with the wood-inhibiting microorganisms.



Also, An Understanding of Gradations is Necessary...

Microscopic, wood-inhabiting organisms and the long-lived, gigantic trees interact intimately in a long and intense struggle for survival. This struggle starts with a wound and can end with total decomposition of the wood. Many biotic and abiotic factors are involved in the decay processes. It is difficult to determine where one event or process starts and another ends.

The events and processes overlap and mingle like the colors in a large spectrum or rainbow. Where does one color stop and another start? The natural process of decay is even more complicated and it might be more accurately likened to a multidimensional spectrum that is constantly changing over time. When we get too close to some processes, they are changed because of our methods of study and measurements. This is why we must consider the PATTERNS of events rather than specific events.(fig. 10)

Figure 10



Then, what CAN and CANNOT be done about the decay processes? The more we learn about the processes the better are our chances for REGULATING them.

WE CANNOT:

- Stop the processes. We cannot stop our ultimate death either, but that does not mean we cannot live a long, healthy, and productive life.

WE CAN:

- Prevent decay-temporarily.
- Decrease the rate.
- Increase the rate.
- Detect it.
- Predict its rate.
- Predict its ultimate configuration.
- Minimize its volume.

How effectively we can do the above depends on how well we understand the decay processes. The decay processes are not so overwhelming that they defy regulation.

SURVIVAL of any organism depends on its ability to compete effectively with other organisms for space and an energy source. To survive, organisms must live long enough to complete a life cycle. They must compete for food and space under constantly changing environmental conditions. They must respond rapidly and effectively to injury caused by abiotic and

biotic factors. The response must be such that it enables the organisms to continue to survive.

The Major Reason Why Wood-inhabiting Microorganisms Survive is that They Become Established in Succession.

THE TREE DECAY PROCESSES START WITH A WOUND—a break in the protective bark that exposes the xylem. New space and nutrients become immediately available to a wide variety of organisms—bacteria, nondecay fungi, decay-causing fungi, algae, mosses, lichens, insects, slugs, spiders, and small animals. The competition is intense. Many organisms compete, but as time passes, fewer and fewer are successful. Environmental factors—rain, ice, snow, wind, heat, cold—affect their survival. And, while the wound surface battle rages, those living wood cells that are behind the wound are REACTING to the injury and infection. The normal physiological processes give way to new protective processes. Shifts in metabolism occur. Materials that are poisonous to some organisms are formed in the tree cells. In a sense, the tree begins to form a protective chemical shield around and immediately behind the wound. (fig. 11)

Figure 11



MICROORGANISMS:

1. Spores of fungi,
2. *Cladosporium*,
3. *Trichoderma*,
4. *Aspergillus*,
5. *Phialophora*,
6. Bacteria,
7. Yeasts,
8. *Fusarium*,
9. *Penicillium*,
10. *Altemaria*,
11. *Pullularia*,
12. *Cytospora*.

As time passes, fewer species of organisms survive on the wound surface. The concentration of any one group of organisms on the wound surface may fluctuate greatly if there are temperature extremes in the seasons. But now most of the action is inside the tree. A look into the tree after a year shows that a few microorganisms surmounted the chemical barriers formed by the tree. The microorganisms either used the protective materials in the barrier as nutrients or altered these materials in such a way that they were no longer toxic. The protective materials are mostly phenolic compounds in angiosperms and terpenes in gymnosperms. Oxidation and polymerization of these materials take place after wounding. Usually, *but definitely not always*, the microorganisms that are the first to infect are bacteria and nondecay fungi. In some cases, decay-causing fungi are first. The microorganisms that are the first to infect are called PIONEERS. Which microorganisms become the pioneers is affected greatly by many factors-time of year of wounding; type, position, and severity of wound. The pioneers in turn affect greatly the species of microorganisms that follow in the succession. And, the species that follow will affect greatly the rate and type of wood alteration. Successions are orderly, but complex. (fig. 12)

MICROORGANISMS:

1. Bacteria,
2. *Cytospora*,
3. *Pyrenochaeta*,
4. *Phoma*,
5. *Phialophora*,
6. *Gliocladium*,
7. *Graphium*,
8. *Cephalosporium*,
9. *Coniothyrium*,
10. *Fusarium*,
11. *Rhinoctadiella*,
12. *Acrostaphalus*,
13. *Trichocladium*,
14. Yeasts.

Figure 12



After 4 years fewer microorganisms are active behind the wound. Sporophores of decay fungi may begin to develop. The first few years after wounding are the most important for the tree and the microorganisms. Within this time, the rate and much of the extent or limits of the infection will be set. One group or species of organisms follows another until all the wood is decomposed-a *succession*. But all wounds do not follow such a pattern of infection to decomposition. Most of the time the tree is effective in blocking or limiting the infection. The wound may close. The final stages of the succession may not occur. But, after the tree dies, many OTHER groups of microorganisms will begin to digest the wood. And when this happens, another succession occurs. In summary MANY species of microorganisms are involved in the decay processes. The microorganisms become established in successions. (fig. 13)

MICROORGANISMS:

Figure 13

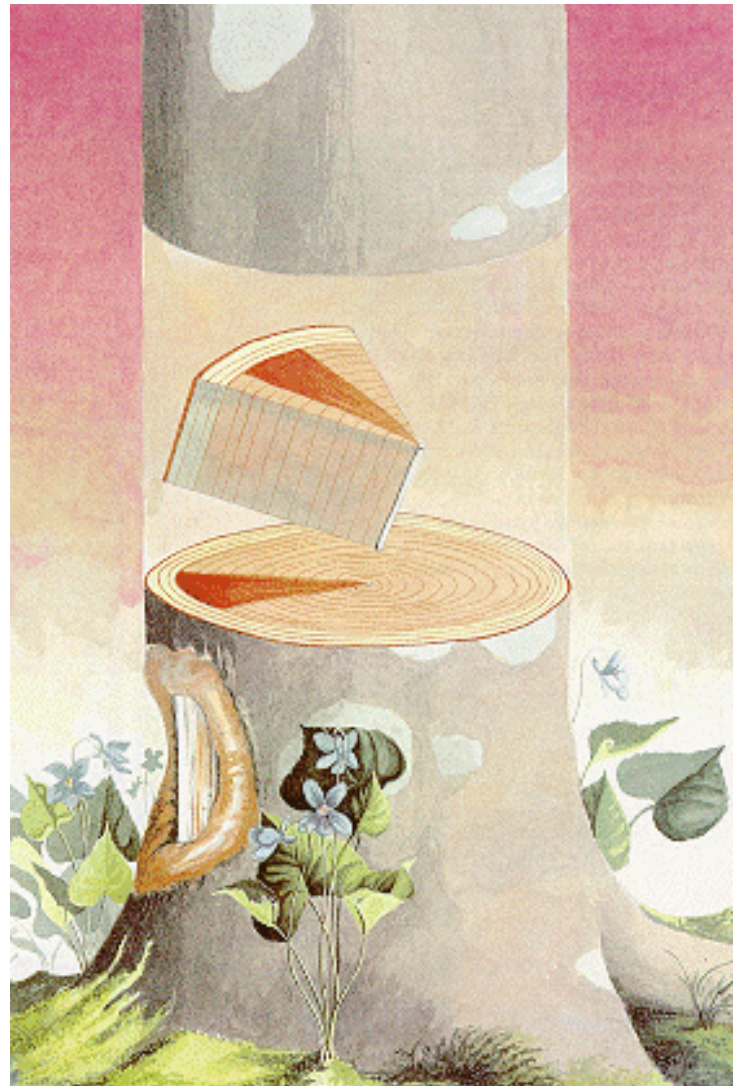
1. Hyphae of Hymenomycetes,
2. *Fusarium*,
3. *Phialophora*,
4. *Trichoderrna*,
5. Bacteria,
6. Sporophores of Hymenomycetes.



Trees Survive Wounds and Infection Because They Are Highly Compartmented Plants That Compartmentalize the Injured and Infected Tissues.

Trees have evolved over a period of 200 to 400 million years while being under the constant stress of wounding. Even with this stress, they still have evolved to be the largest and longest lived organisms ever to inhabit the earth. And yet trees have NO WOUND HEALING PROCESS-healing in a sense of REPLACING or REPAIRING injured tissues. HEAL means to restore to a previous healthy state. It is impossible to HEAL injured and infected xylem. Trees have evolved as highly ordered, COMPARTMENTED plants, that instead of healing, COMPARTMENTALIZE in an orderly way the injured and infected tissues. A coded MODEL SYSThM for explaining how a tree is compartmented and how it compartmentalizes infected and injured wood has been developed. It is called CODIT, an acronym for COMPARTMENTALIZATION OF DECAY IN TREES. Terms such as "walls" and "plugs" are used in the model only to help present a mental image of the compartments. These terms are not meant as technical terms. (fig. 14)

Figure 14



Codit

Wall 1. After being wounded, the tree responds in a dynamic way by plugging the vertical vascular system above and below the wound. The conducting elements-vessels in angiosperms and tracheids in gymnosperms are plugged in various ways: tyloses, gum deposits, pit asperations, etc. The plugged elements complete the transverse top and bottom walls of the compartments. Wall 1 is the weakest wall.

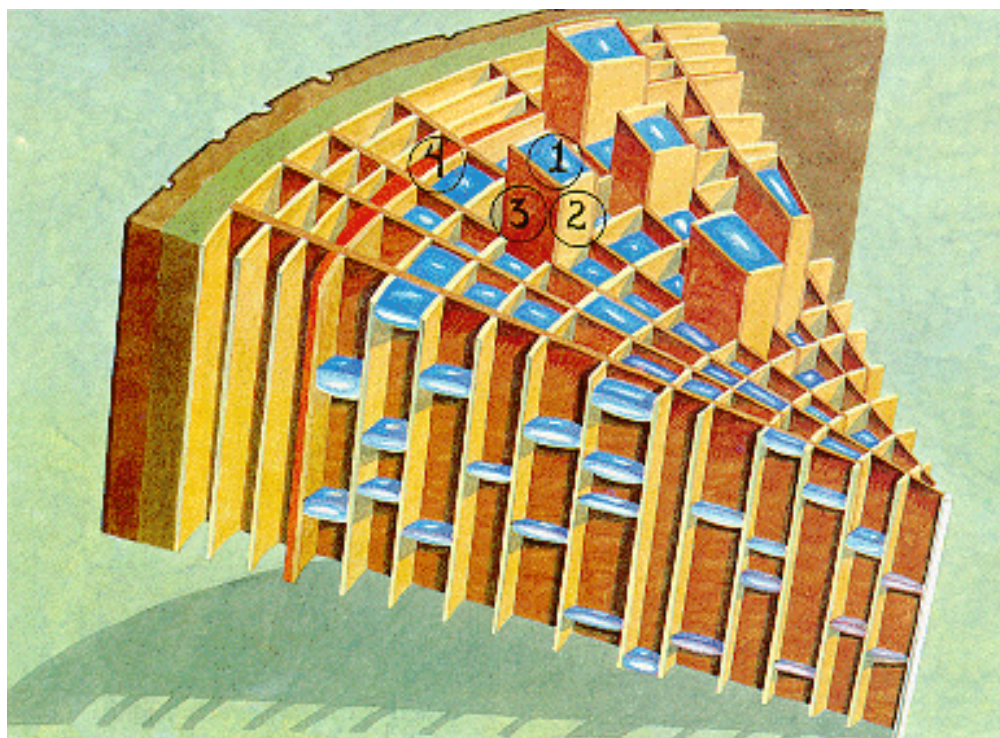
Wall 2. The last cells to form in each growth ring make up the tangential walls of the compartments. These walls are CONTINUOUS around each growth ring~xcept where sheets of ray cells pass through. Wall 2 is the second weakest wall.

Wall 3. Sheets of ray cells make up the radial walls. They are DISCONTINUOUS walls because they vary greatly in length, thickness, and height. Walls 3 are the strongest walls in the tree at the time of wounding.

Wall 4. After a tree is wounded, the cambium begins to form a new protective wall. The wall is both an

anatomical and a chemical wall. This wall separates the tissue present at the time of wounding from tissue that forms after. It is the strongest of the four walls. (fig. 15)

Figure 15 For additional information about CODIT see Agricultural Information Bulletin Number 405.



A More Detailed Look Shows That, in a Diagrammatic Way, a Tree is made Up of Many Rooms or Compartments.(fig.16)

Figure 16



Figure 17

In a sense, a tree is a multiple perennial plant. Every growth ring can be thought of as an individual tree. Every new "tree" envelopes all the older trees. (fig.17)

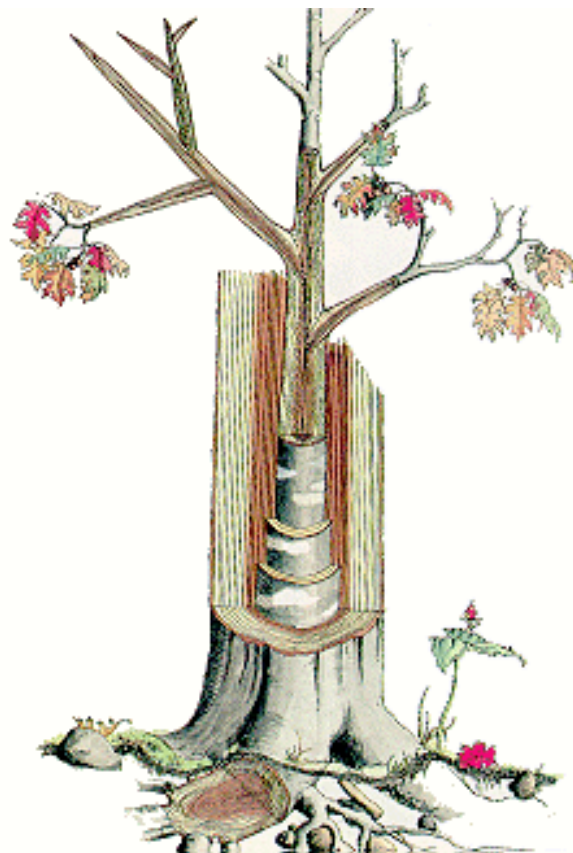


Figure 18

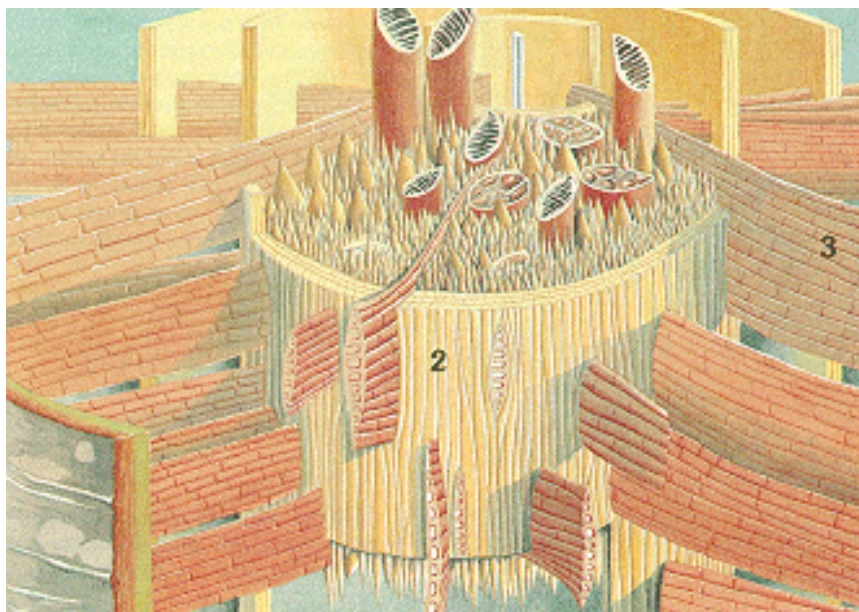
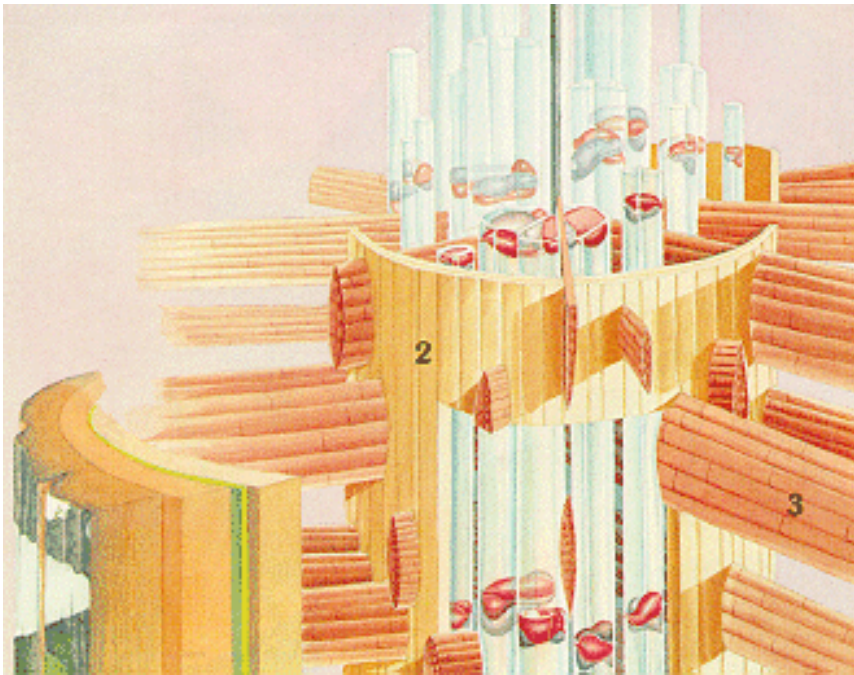


Figure 19

Each growth ring is subdivided into compartments that have sheets of ray cells as radial walls (Walls 3) and the cells that are the last to form in each growth ring are the tangential walls (Walls 2). Within these walls there are fibers, vessels, and axial parenchyma in angiosperms, and longitudinal parenchyma and longitudinal tracheids in gymnosperms. The vessels and the pits between the longitudinal tracheids keep the tops and bottoms of the compartments partially open. This is essential to maintain the vertical flow of liquids.(fig. 18)

BUT AFTER WOUNDING, THE TREE REACTS.

The vertical conducting elements begin to plug in various ways. This completes the transverse walls (Walls 1).(fig. 19)



Another close look at Walls 2 and 3 gives the impression of subdivided three dimensional wheels.(fig.20)

Figure 20



There is great variation in the dimension of Walls 3 (fig.21)

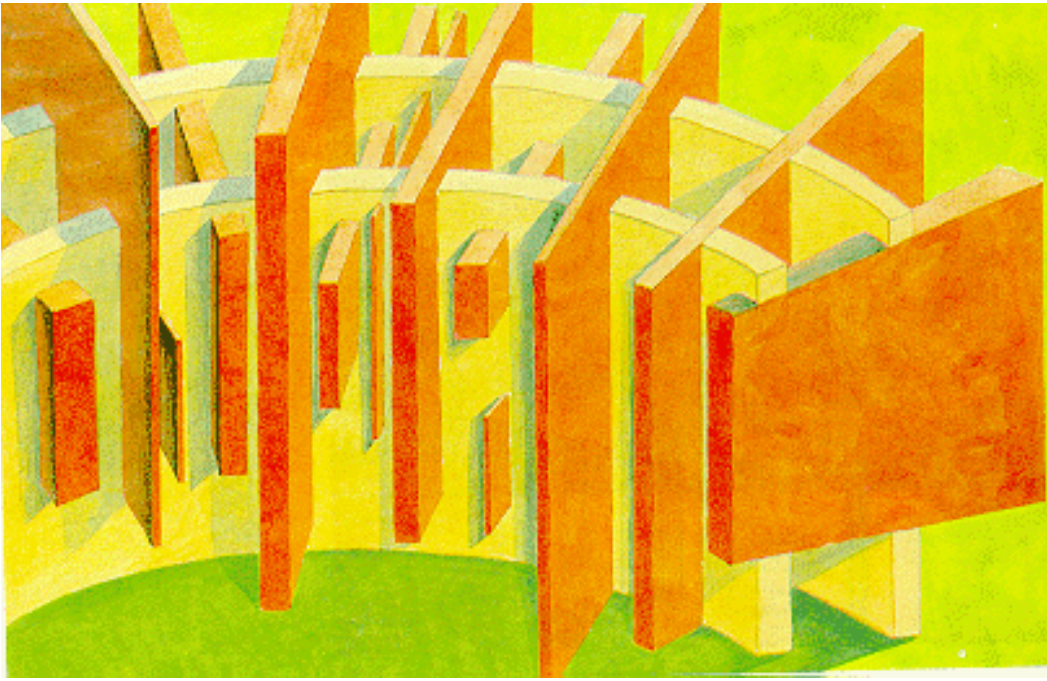
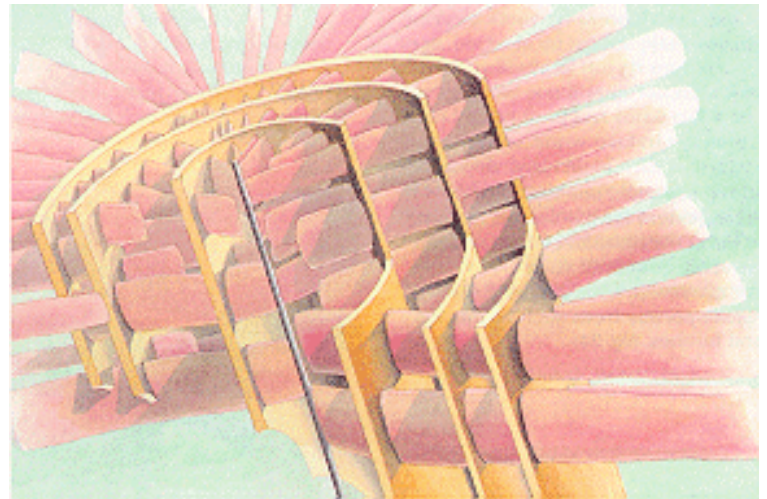


Figure 21

To the invading microorganisms, Walls 3 present a maze of obstacles. Each sheet of ray cells in sapwood contains living parenchyma cells that present a chemical as well as an anatomical barrier. The chemicals in the living ray cells are altered after a tree is wounded. The altered chemicals may be poisonous to some microorganisms. (fig. 22)

Figure 22



Within the compartments are the elements-vessels, tracheids-that conduct liquids vertically. (fig. 23)



Figure 23

In angiosperms, one typical arrangement for the vessels is a uniform distribution of similar-sized vessels throughout each compartment. This is typical for *diffuse-porous* trees such as maples and birches. (fig. 24)

Figure 24

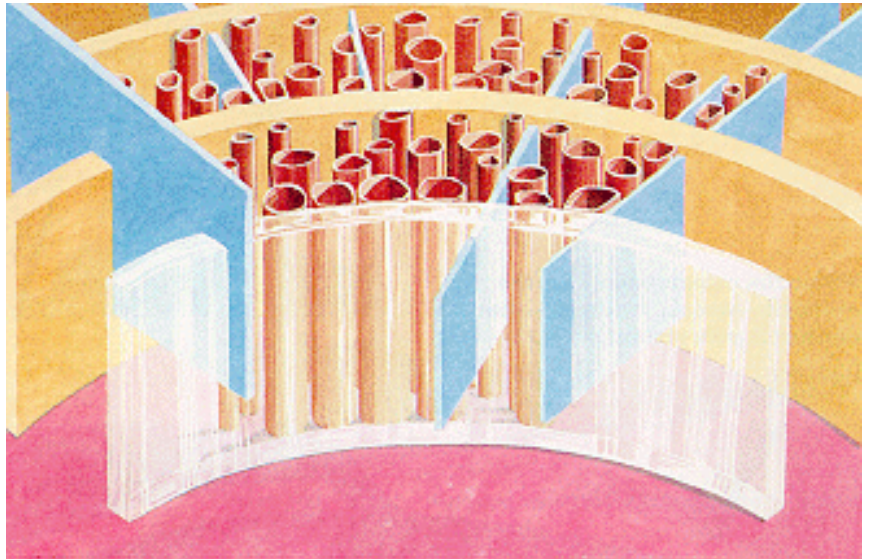


Figure 25

In other angiosperms, most of the larger diameter vessels may be clustered more towards the beginning of each growth ring or compartment, while much smaller diameter ones are found at the end of each growth ring or compartment. This ring porous arrangement is typical for oak, cherry, and locust. Many trees have variations on these basic arrangements. (fig. 25)

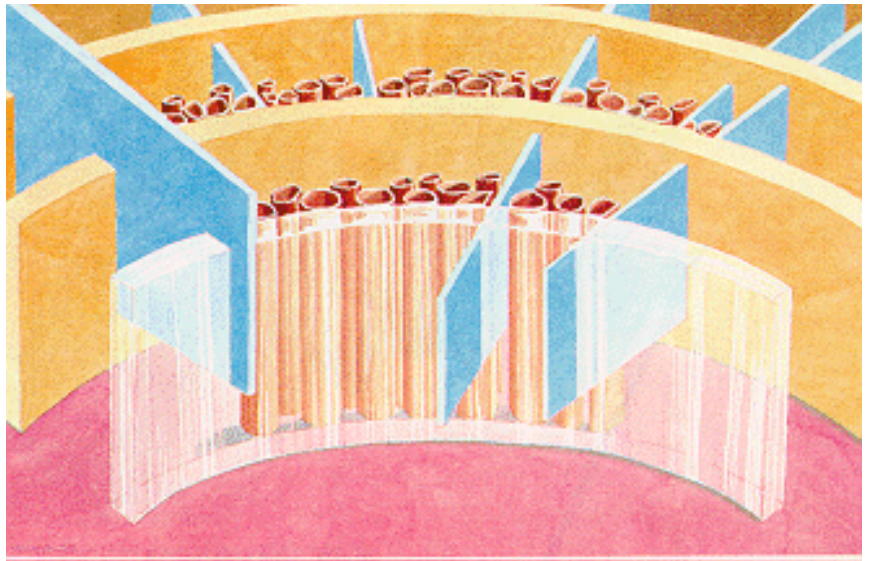


Figure 26

In gymnosperms, the compartments are filled with longitudinal tracheids that are the vertical conducting elements. In conifers, there are also parenchyma cell arrangements that form resin ducts or canals in the rays. Their position is usually near the end of each growth ring or compartment. (Shown here in green.) There may also be radial resin ducts in the rays; however, none are shown in the drawing. (fig.26)

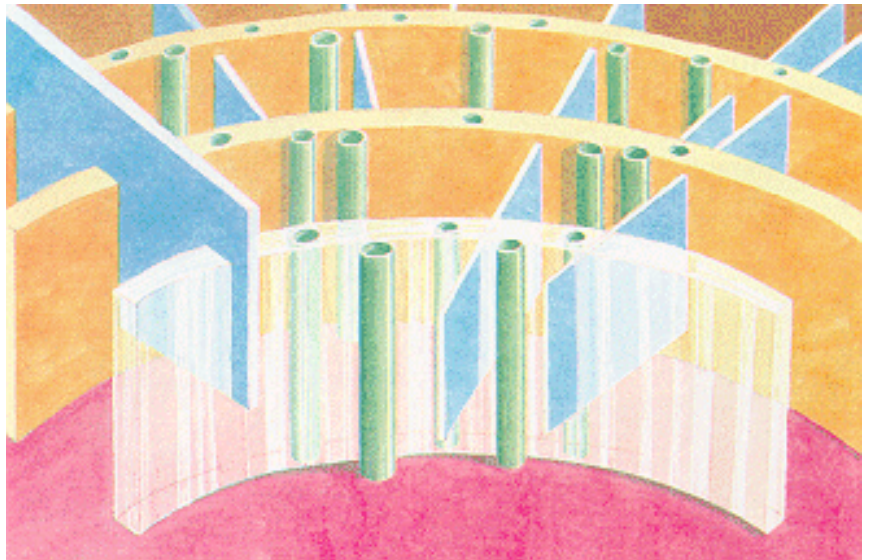
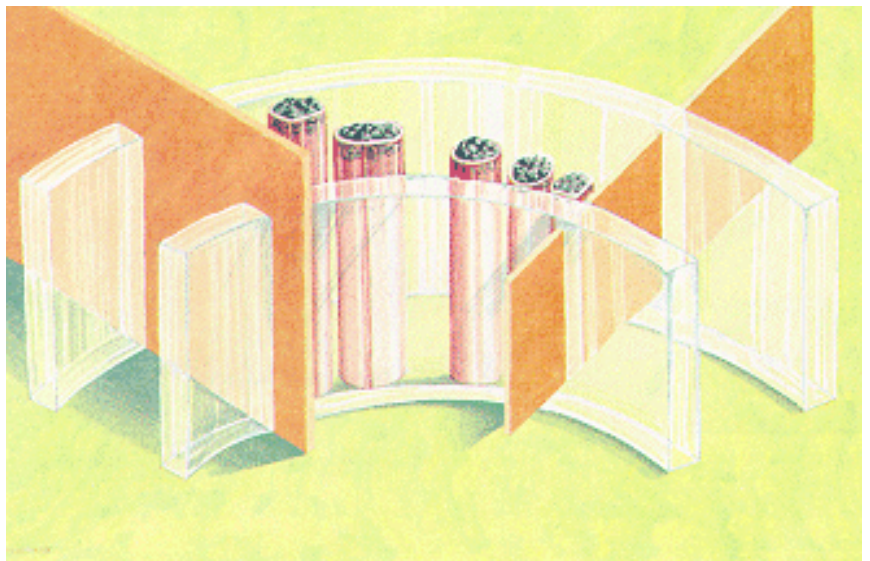


Figure 27

After wounding has occurred, the conducting elements may be plugged by a wide variety of materials that come from living cells that surround the elements-often contact parenchyma in angiosperms. Or the pits between the tracheids may close. (fig. 27)



The Classical Concept of Tree Decay

ROBERT HARTIG developed the concept of tree decay almost a century ago. At that time, decay was well recognized as a serious economical problem. In tune with the theory of spontaneous generation, scientists believed that

Decay Caused Fungi.

Robert Hartig, in tune with the germ theory that emerged after 1845, said that

Fungi Caused Decay.

This simple reversal of two words set the stage for the decay concept and, in some ways, for the beginning of the science of FOREST PATHOLOGY.

The Classical Concept of Tree Decay has Three Major Parts:

1. WOUNDS started the processes (below left). (fig. 28)
2. DECAY FUNGI (Hymenomycetes) (below, upper right) (fig. 29) infected the heartwood through fresh wounds. (Robert Hartig showed that the sporophores on the wound surface (opposite page) (fig. 31) and the hyphae associated with the wood decay (below, upper right) were the same fungus.)
3. DECAYED WOOD resulted (below, lower right). (fig. 30)

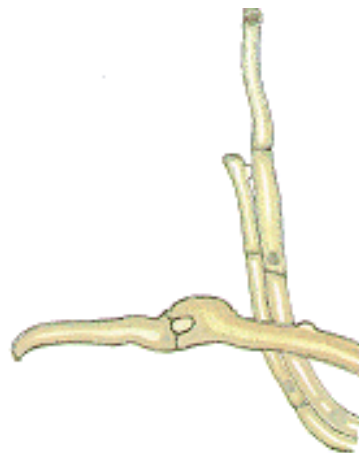


Figure 29 Hyphae of *Phellinus tremulae*



Figure 28 Wound on yellow birch.

Figure 28 Wound on yellow birch

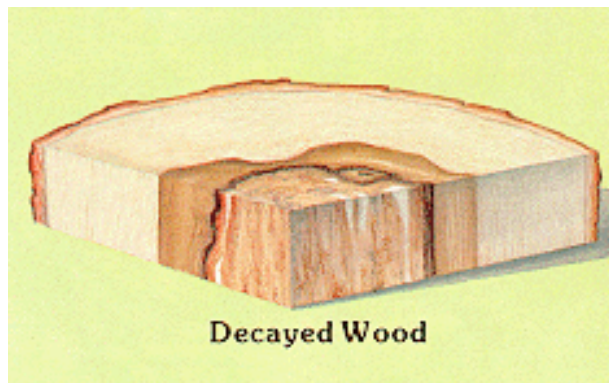


Figure 30 Decayed wood associated with *Phellinus tremulae*



Figure 31
Phellinus
tremulae
on
Populus
tremuloides

The Expanded Concept of Tree Decay

The expanded concept of tree decay has four major parts:

1. **WOUNDS** start the **PROCESSES** (below left). (fig. 32)
2. **MANY ORGANISMS** are associated in the processes (below right). **SUCCESSIONS** of organisms are involved in the infection of the wood. (fig. 33)
3. The tree **REACTS** to the wound. The living cells behind the wound react immediately (opposite page, upper left). (fig. 34)

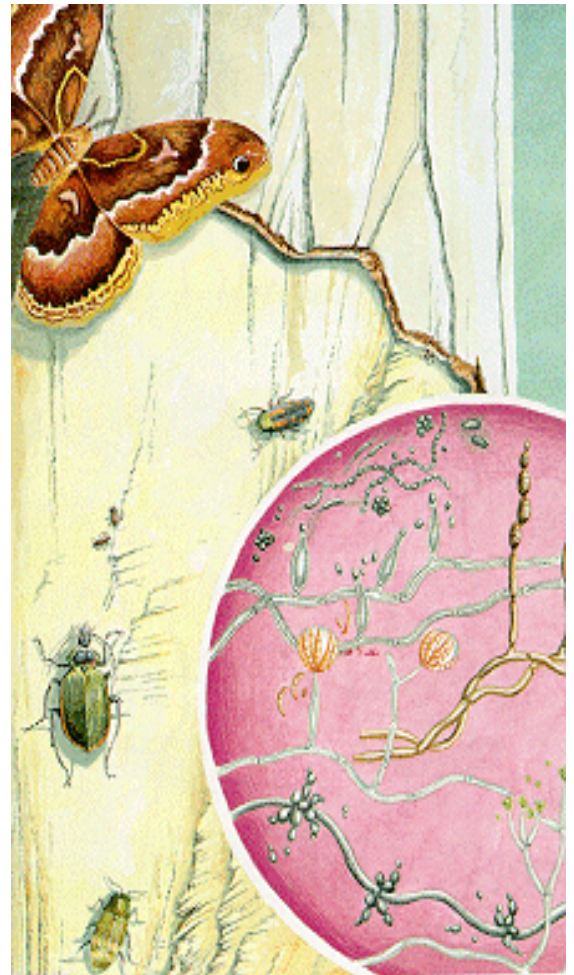
The **COMPARTMENTED** tree **COMPARTMENTALIZES** the injured and infected tissues (opposite page, upper right). (fig. 35)

4. **DISCOLORED** and **DECAYED** wood results, but this wood is **COMPARTMENTALIZED** by **WALLS 1,2,3, and 4** (opposite page, lower). (fig. 36)

Figure 32



Figure 33



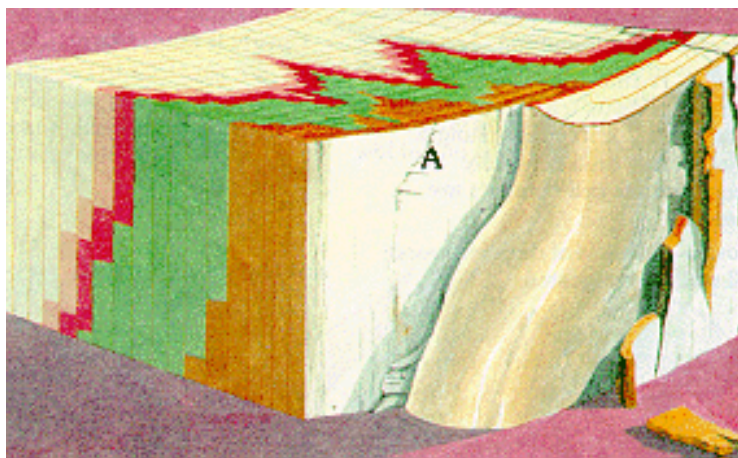
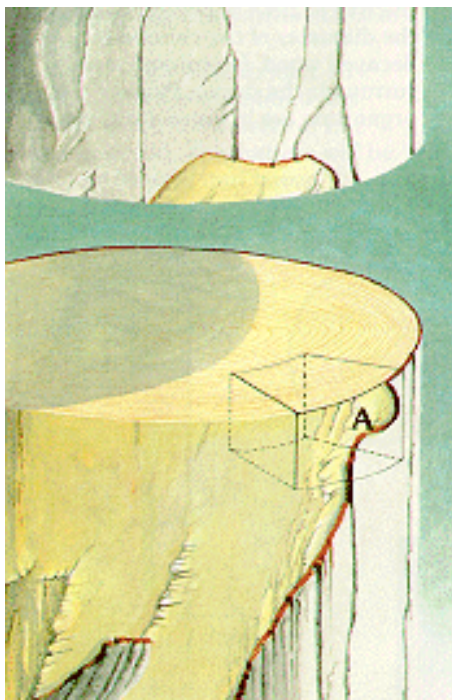
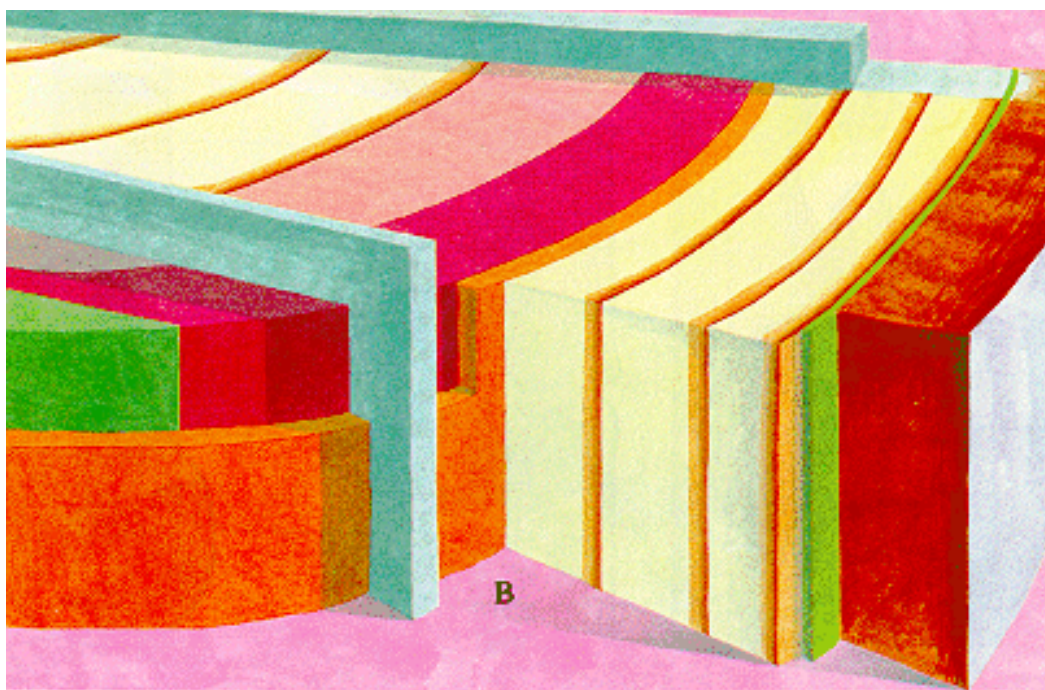


Figure 35

Brown - decayed wood
Green - discolored wood
Red - tree chemical protective zone
Orange - barrier zone - Wall 4
Blue - Wall 3

Figure 34

Figure 36



Here Are Some Basic Patterns of COMPARTMENTALIZATION and SUCCESSIONS After One Wounding Period.

COLOR CODES

Red-Tree response (chemical protective reactions).

Green-Position of pioneer microorganisms (can be bacteria, decay fungi, or nondecay fungi). Wood in this area is usually discolored; its cell contents are altered.

Brown-Position of decayed wood; cell walls are digested.

Five branch stubs. Strong compartmentalization. The wound closure is complete. (fig. 37)

Four large open stubs. Diameter of the tree at time of branch death is the diameter of the column of decayed wood. Discolored wood surrounds the decay. Pioneer organisms are in green zone. (fig. 38)

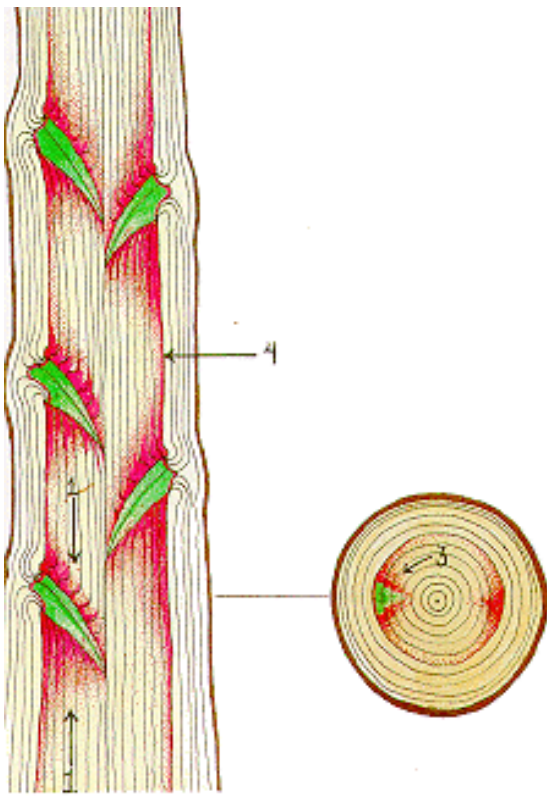


Figure 37

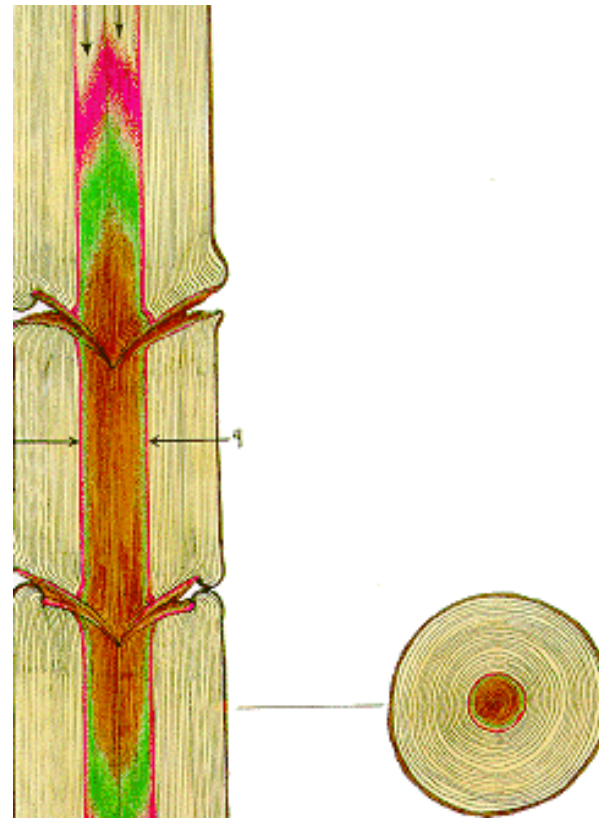


Figure 38

Closed minor wound after 5 years. Invasion is well compartmentalized. (fig. 39) Two large open wounds after 10 years. Column of discolored and decayed wood is diameter of tree when wounded. This pattern will be the same in trees that have heartwood. INJURED AND INFECTED TISSUES IN HEARTWOOD ARE ALSO COMPARTMENTALIZED. (fig. 40) One severe wound after 10 years. The discolored and decayed wood is confined to one side of the tree. Although the red zone is shown on the side opposite the wound, no anatomical changes will be seen. All the wood within the entire cylinder present at the time of wounding will be slightly altered; in most cases, this will be too subtle to be visible. (fig. 41)

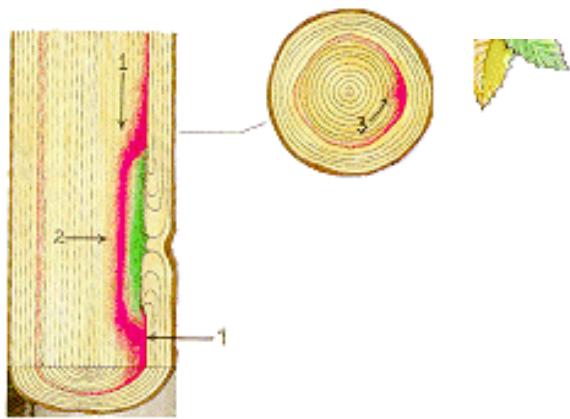


Figure 39

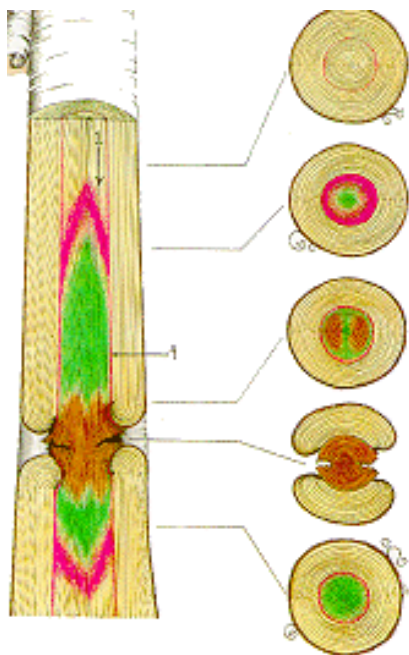


Figure 40

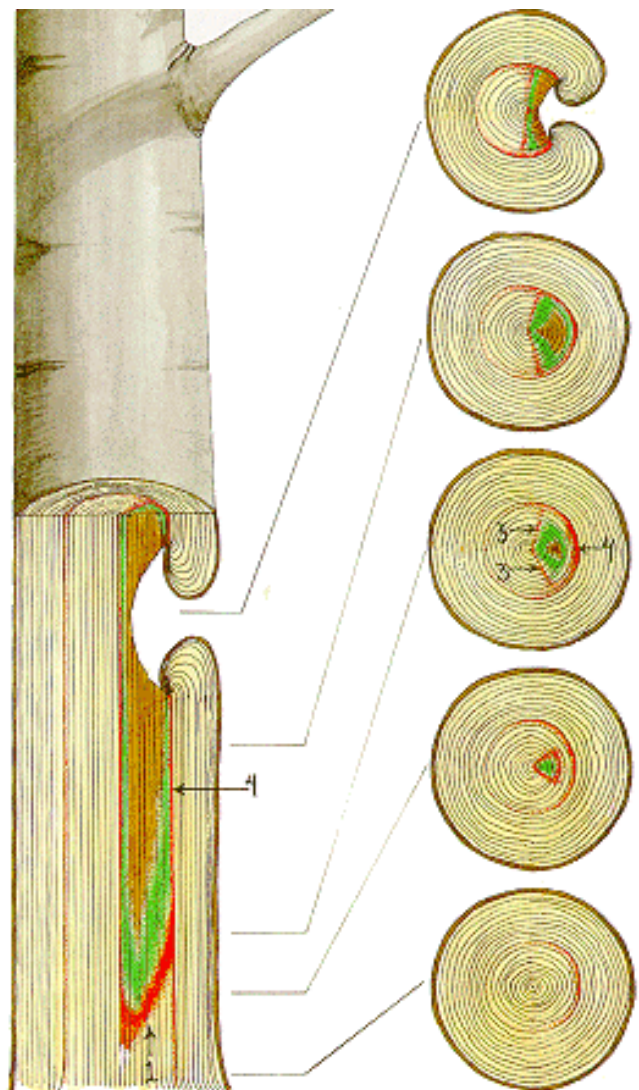
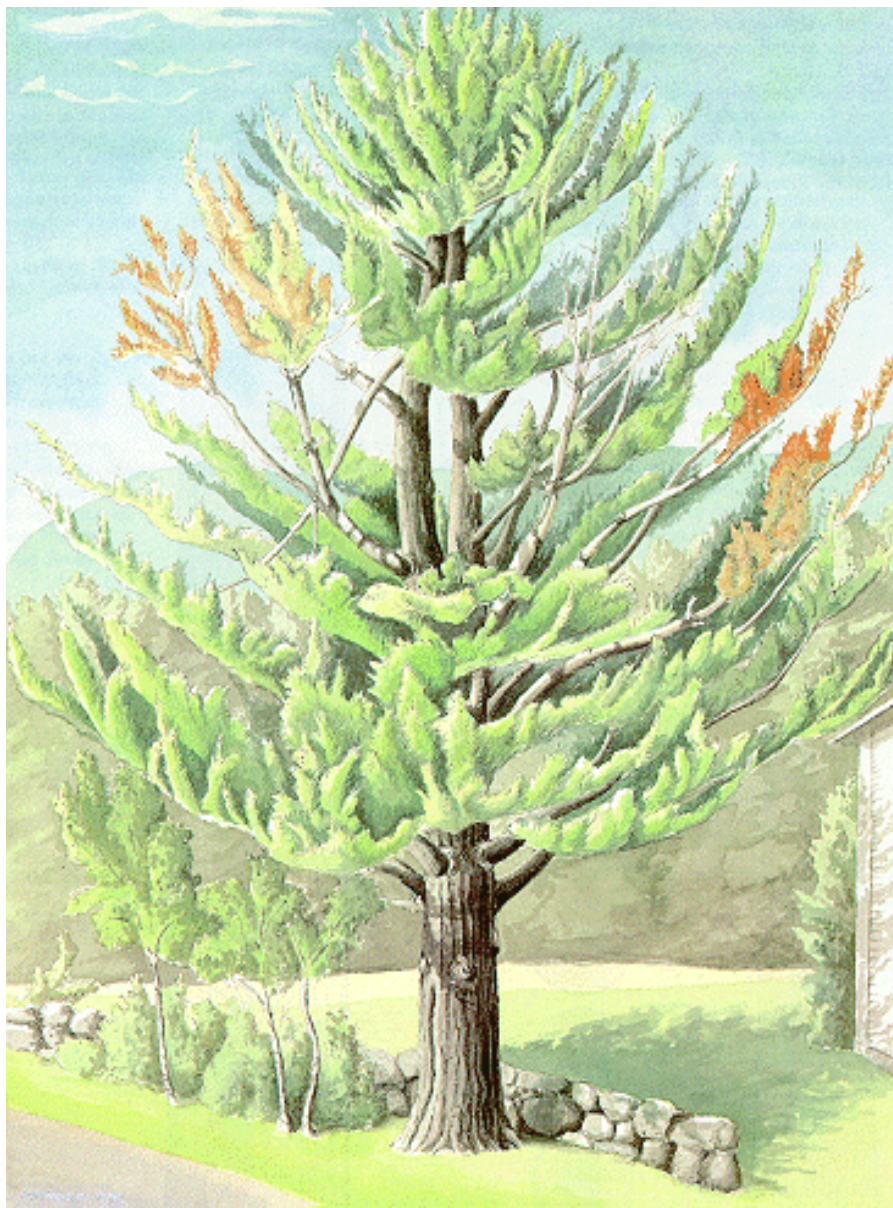


Figure 41

Figure 42

WOUNDS start the processes that could lead to discolored and decayed wood. The classical concept and the expanded concept both recognize wounds as the starting point for the processes. Trunk wounds can be caused by a variety of agents: insects, birds, small and large animals, wind, ice, snow, temperature extremes, chemicals, and people and some of their activities. Often the wound is seen but not the agent that inflicted it, such as the porcupine wound in this pine. (fig. 42)



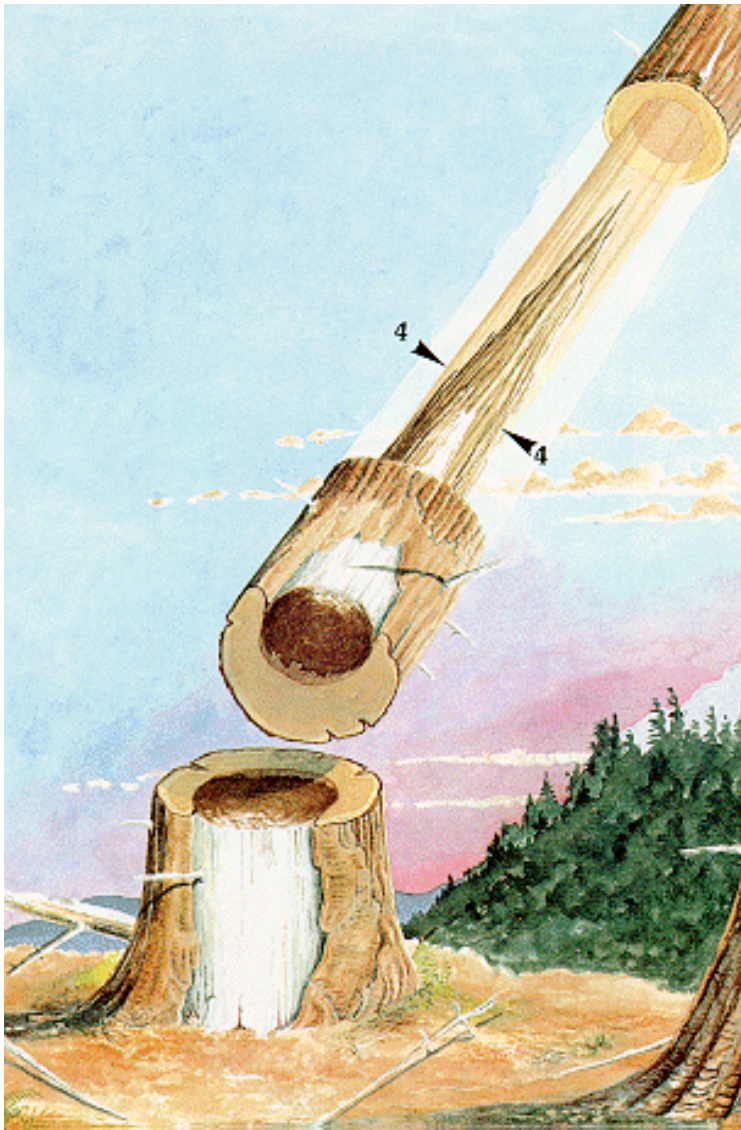


Figure 43

And the black bear wound on the western hemlock. Wall 4 forms as a cylinder and the decay develops as a cone within the cylinder as Walls 1., 2., and 3 give way to microorganisms. (fig 43)

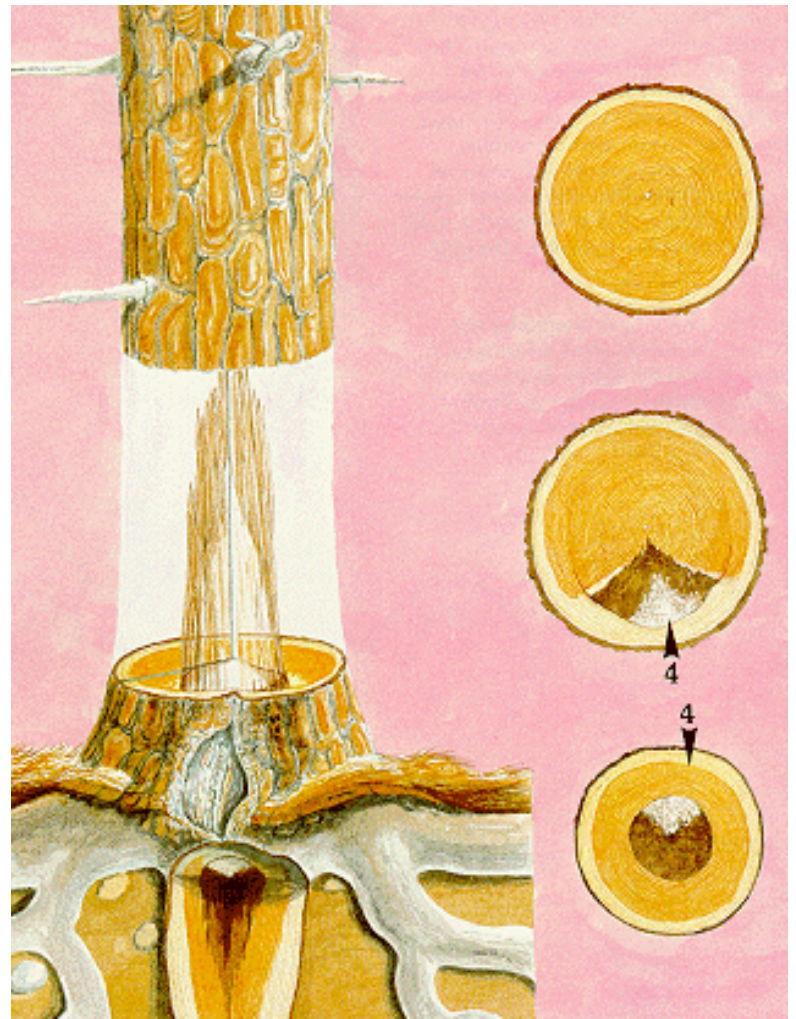


Figure 44 Gymnosperm

Root and butt decay associated with wounds are also compartmentalized in gymnosperms(fig.44) and angiosperms. (fig 45)

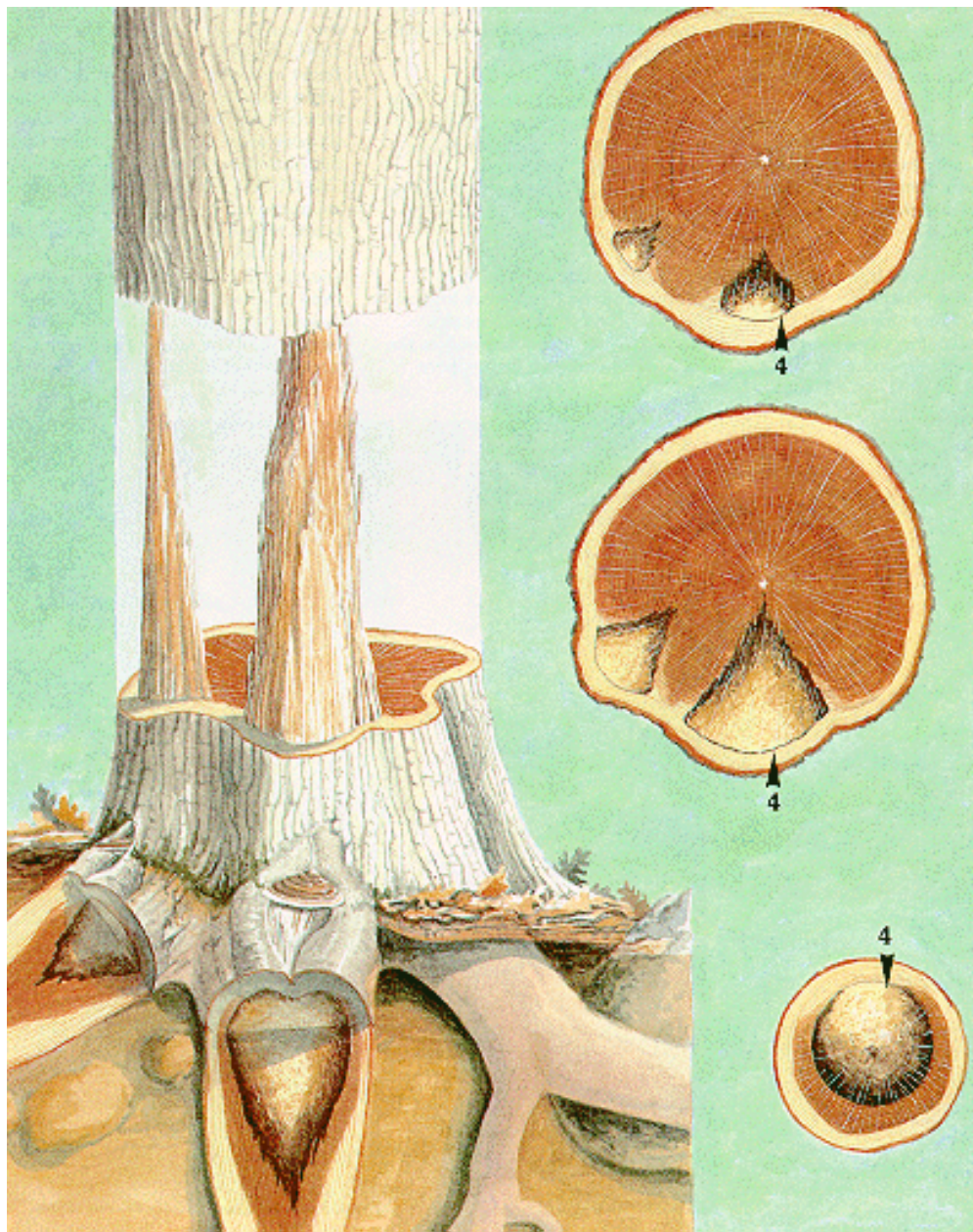


Figure 45 Angiosperm *Ganoderma applanatum*

WOUNDS are of two major types:

1. 1) BRANCH - The branch wounds expose all tissues, from the new outer tissues to that of the older tissues in the center of the tree. (fig. 46)
2. 2) OUTER CORE - The outer core wounds usually expose only the most recently formed tissue. This depends, of course, on the depth of the wound. (fig. 47)



Figure 46 Branch wound



Figure 47 Outer core wound

When microorganisms infect, they grow from compartment to compartment. The column of discolored or decayed wood that is seen macroscopically will be a composite of many columns as seen in these radial sections through drill wounds. (fig. 48)

In a vertical plane, each growth ring ("tree") will have its own column of discolored and decayed wood. The response of the "older trees" or innermost rings is slower and weaker than that of the "younger trees." (fig. 49)

The "holding strength" of Wall 1 decreases as the injury goes inward. The older "trees" have a weaker response. This action determines the shape of the column, shown here from a radial view.(fig. 50) In a sense, the wounds set the stage. The DISCOLORATION PROCESSES begin immediately after wounding when the tree reacts-both by chemical reaction and by plugging. When the pioneer microorganisms invade, the discoloration processes may intensify. The DECAY PROCESSES begin when microorganisms begin to digest cell walls. Many factors affect the rate of the discoloration and decay processes-severity of the wound, position, size, time of year of wounding, wounding agents that import materials into the wound, and the types of microorganisms that infect.

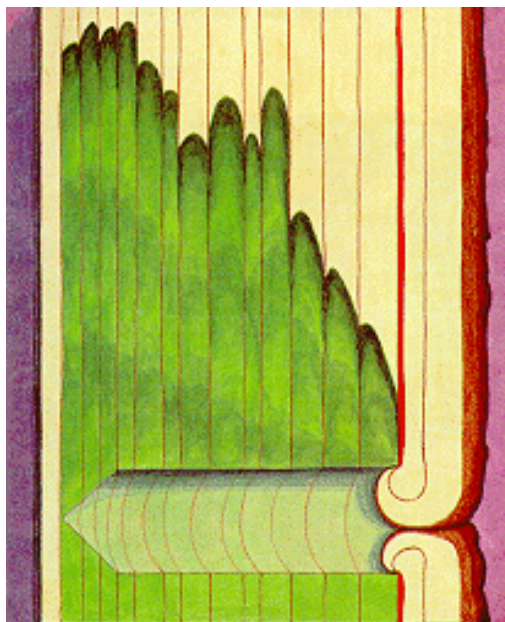


Figure 48

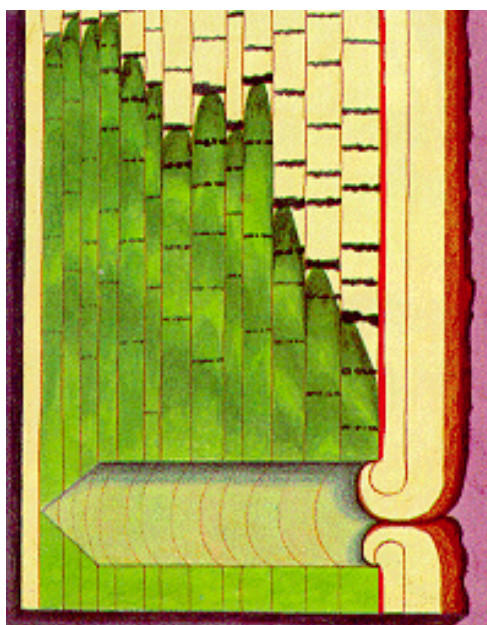


Figure 49

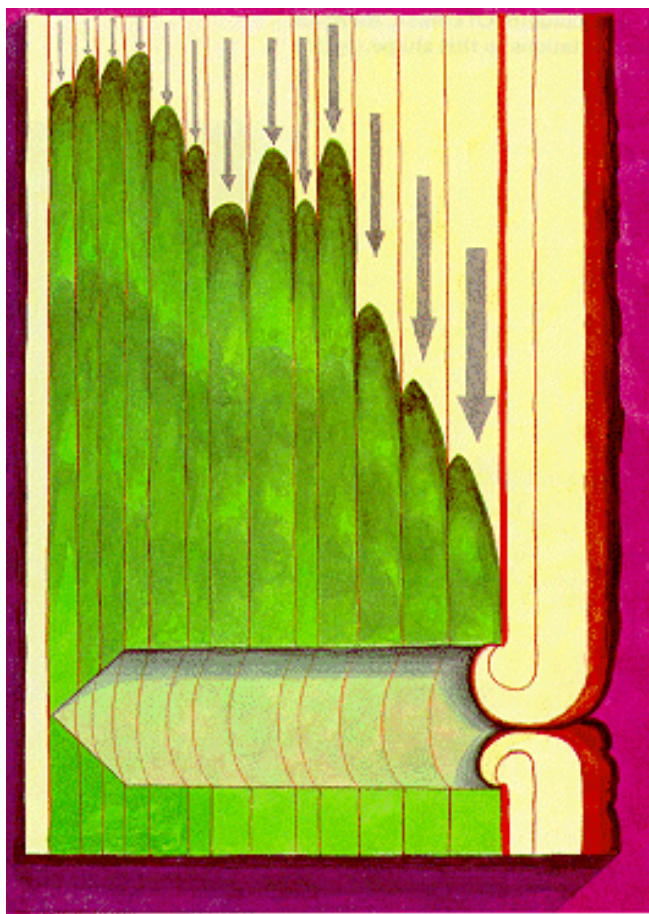
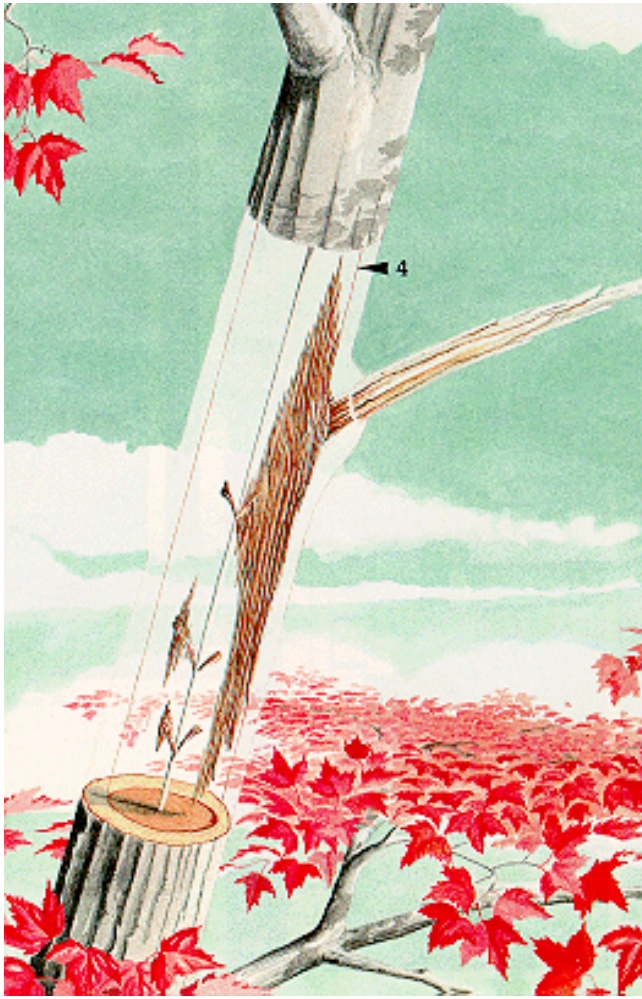
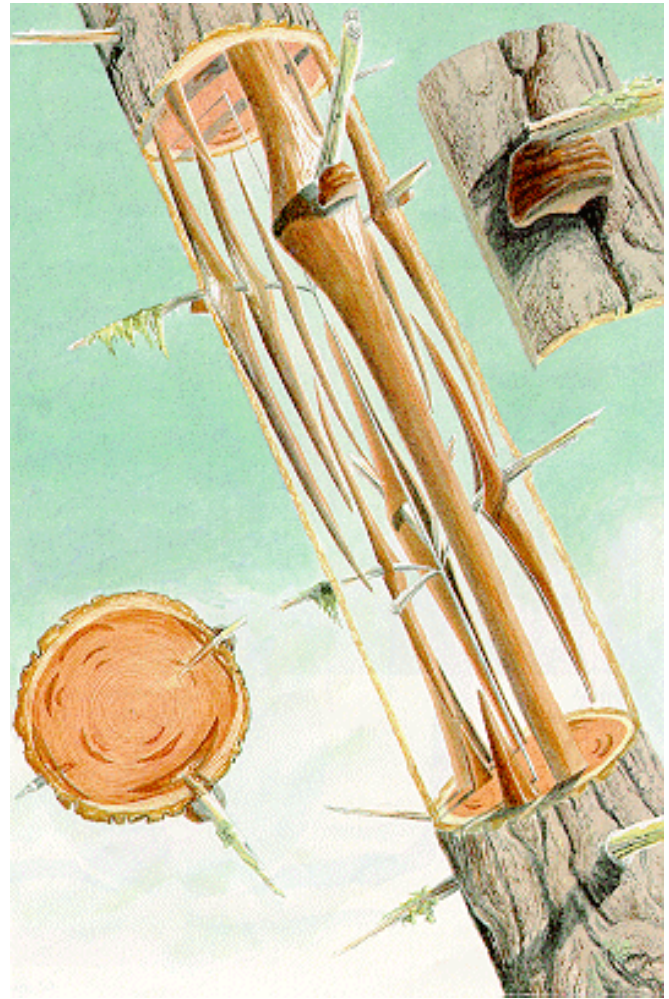


Figure 50

A branch wound will usually have this shape of column. Of course, there are many variations to this shape.(fig.51)

Ring rot is one configuration associated with branch infections.(fig.52)

Figure
51Figure
52

When many branches die at about the same time, the entire central column of the trunk may be decayed. The diameter of the column will be the diameter of the tree when the branches died. Although the death of the branches determines the diameter of the internal column, the fungi associated with the decay in the column may have entered the branch and trunk after a long growth period in the dying branch. Some fungi, such as *Echinodontium tinctorium* and possibly *Fomes pini* and others, first infect minute branchlet stubs on the living branch and therefore usually do not infect the large, freshly exposed branch stubs. (fig. 53)

Branches are often decayed by a wide variety of microorganisms that do not enter the trunk. Branch decay of this type is very beneficial as the tree is pruned when the branches fall. (fig. 54)

Figure 53 *Echinodontium tinctorium*

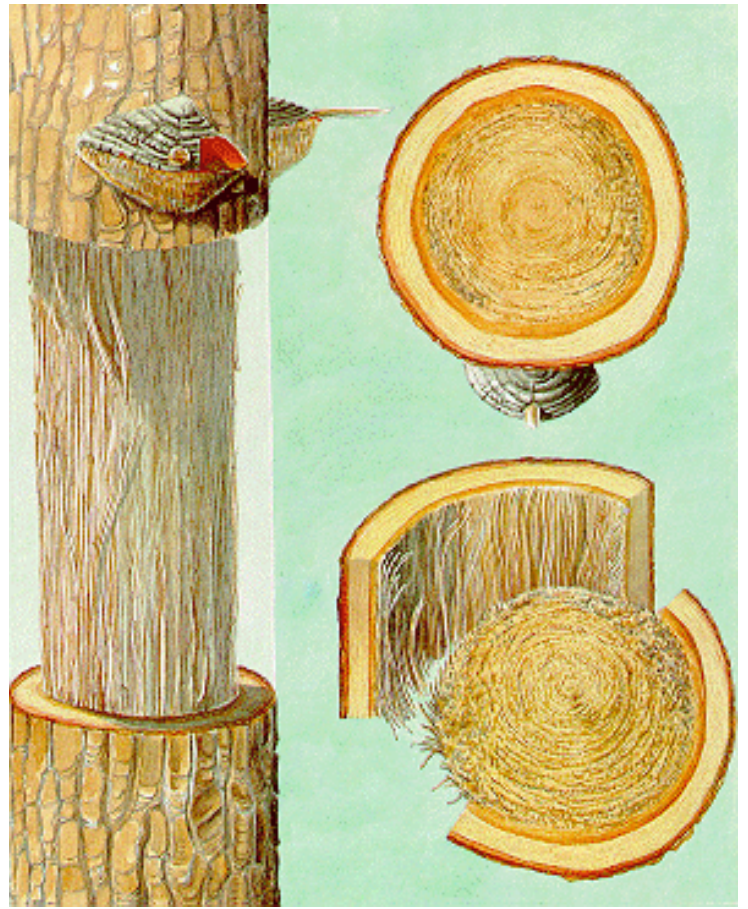


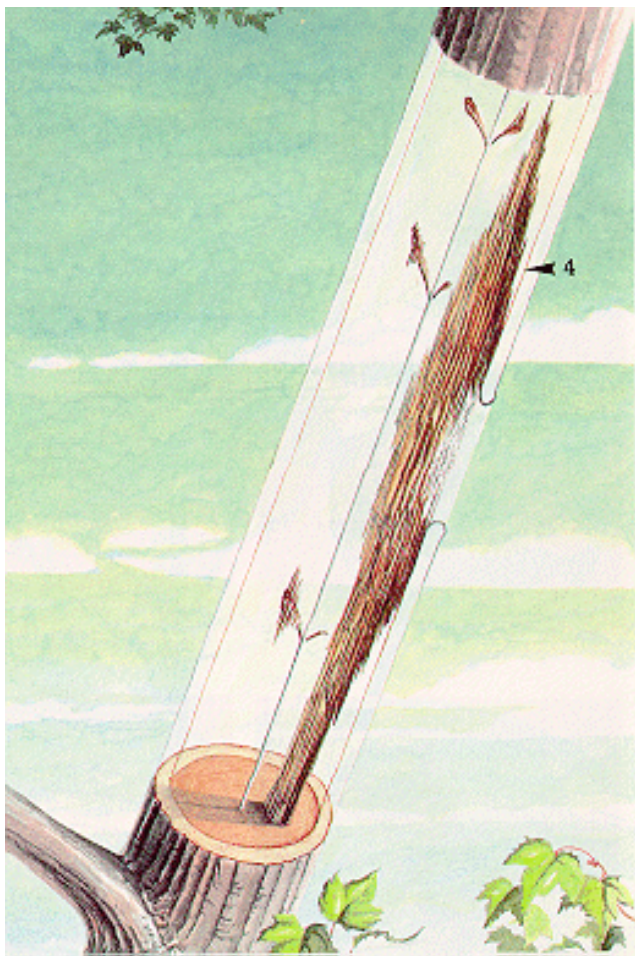


Figure 54

Figure 55

An outer core wound will usually have this shape, but again, many variations exist. In nonheartwoodforming trees, the column will be as shown. In heartwood-forming trees, the column will extend farther along the heartwood-sapwood boundary that *was present at the time of wounding*.

Also, concentrations of pigments and oxidized protective materials will usually be greater along the side of the column closest to the cambium. The column stays to the pith side of Wall 4. (fig. 55)



Some Typical Patterns of Discolored and Decayed Wood Associated with Wounds

Near the wound, the individual columns within each growth ring will be clustered. Some of the various shapes of discolored and decayed wood will be seen as on transverse wedge-shaped sections in the next series of diagrams. (fig. 56)

The eye sees a macroscopic view like this. (fig. 57)

But the mind's eye **SHOULD** see a diagrammatic view like this. Keep this in mind while viewing the following diagrams. (fig. 58)

Walls 2, 3, and 4 are pointed out by arrows in this drawing. These walls will be present in other diagrams, but no arrows will be shown. (fig. 59)

CODES FOR ALL DIAGRAMS

Green-Discolored wood

Brown-Decayed wood

Orange-Wall 4

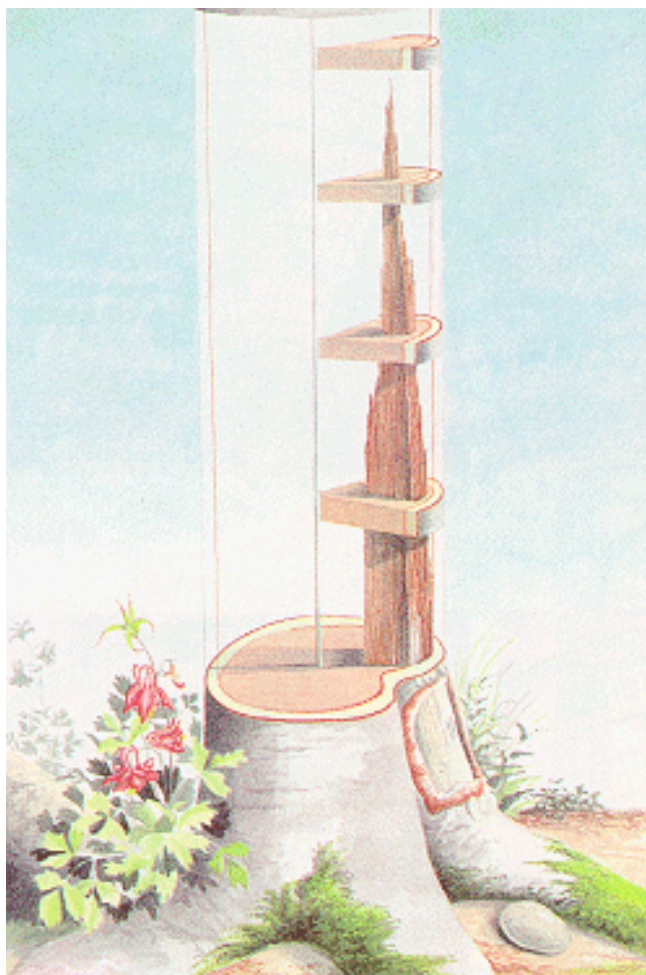


Figure 56

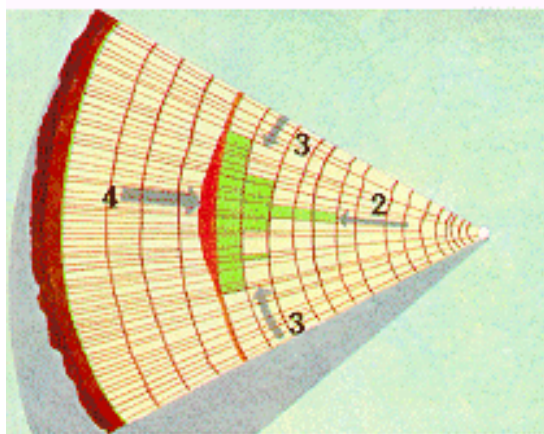
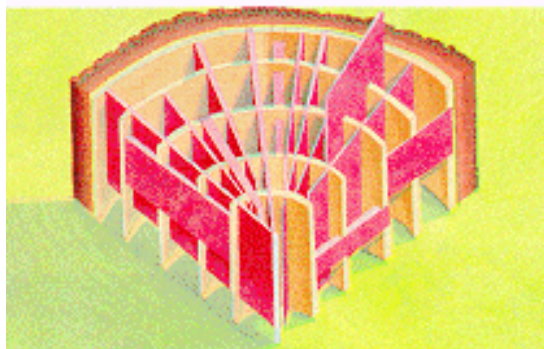
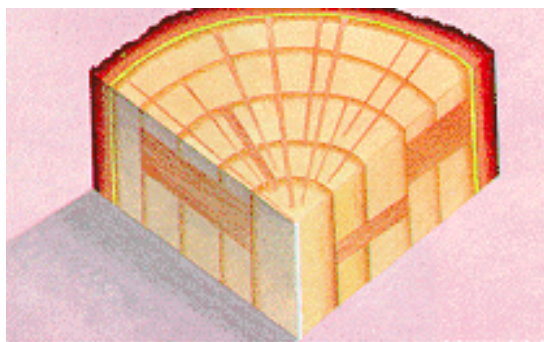


Figure 57

Figure 58

Figure 59

Six-Year-Old Severe Type Wound

The discolored wood forms the typical triangular pattern into the pith. (fig. 60)

Four-Year-Old Moderate Type Wound

The compartments directly beneath the wound were the only ones affected (fig. 61)

Multiple Wounds: A central 10-year-old wound associated with a central column of discolored wood. A later 4-year-old wound with a triangular column of discolored wood that developed to the boundary of the inner barrier zone surrounding the 10-year-old wound. (fig. 62)

Multiple Wounds: A central 10-year-old wound with a central column of discolored wood. A 2-year-old wound with a small column of discolored wood did not spread into the older, more central column. (fig. 63)

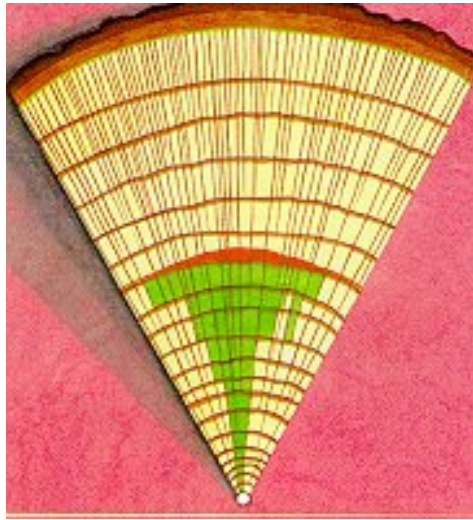


Figure 60



Figure 61

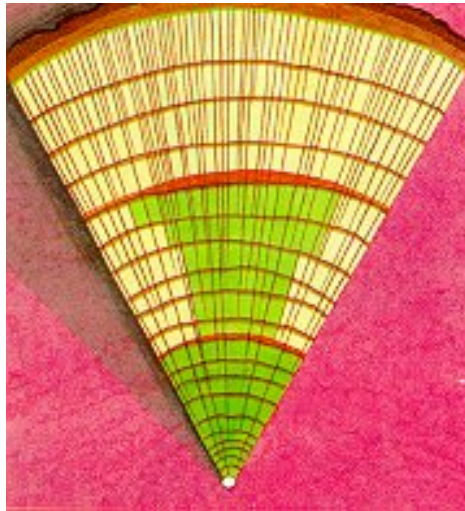


Figure 62



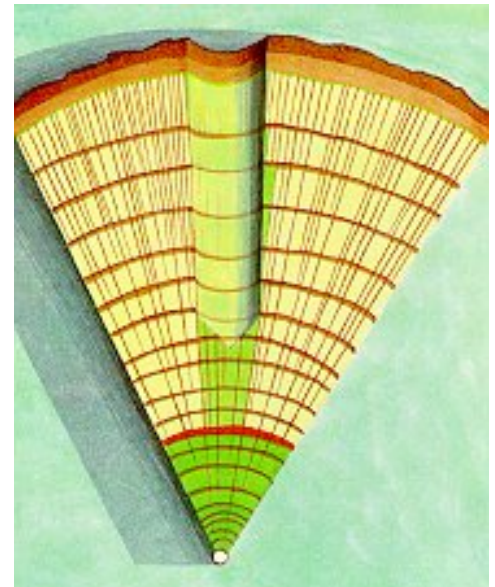
Figure 63

A Deep Drill Wound: The tissues between the end of the drill wound and the inner column of discolored wood will discolor slightly. The radial walls (Walls 3) limit the lateral spread of the discolored wood. (fig. 64)

When the drill hole is shallow, the compartments between the inner column and the tip of the drill hole may remain healthy or nondiscolored. This is the case when shallow injection wounds are inflicted. (fig. 65)

A slanted drill hole usually gives this type of pattern. Note that the discolored compartment between the central column of discolored wood and the tip of the drill hole follow the ray pattern inward (Wall 3). The column beyond the end of the drill hole does not continue in the same direction as the hole. Often the side of the hole closest to the cambium

Figure 64



will be darker from an accumulation of phenols. (fig. 66)

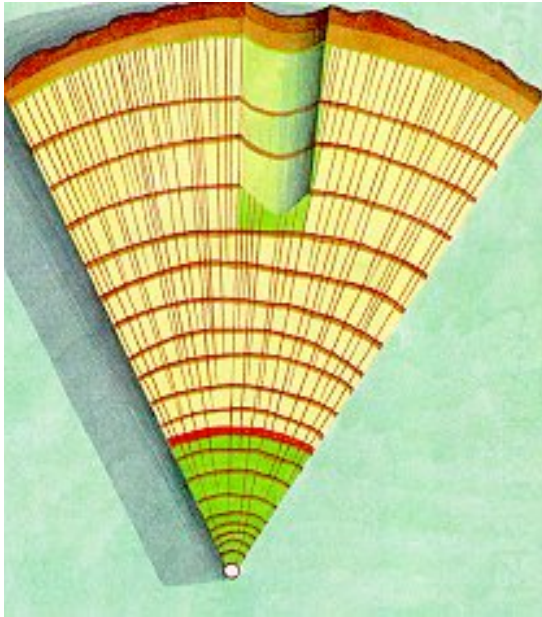


Figure 65

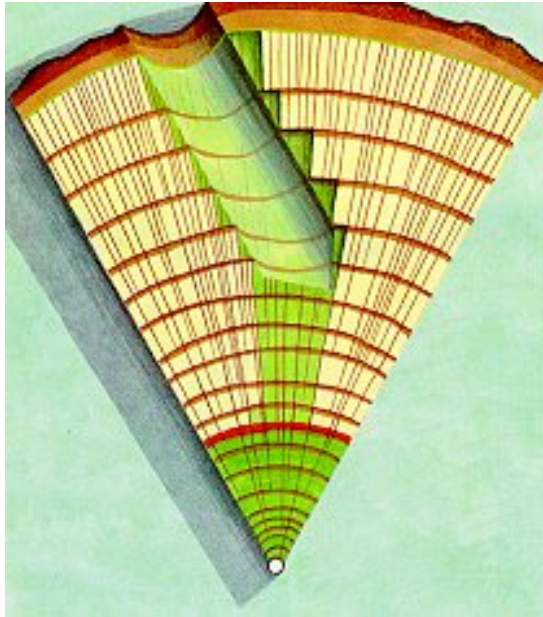


Figure 66

A series of seven sections from above a wound similar to that shown on page 39 figure 56. Each section is approximately 20 centimeters above the other. Note the pattern of discolored and decayed wood and the position of the barrier zone. (figs. 67-73)

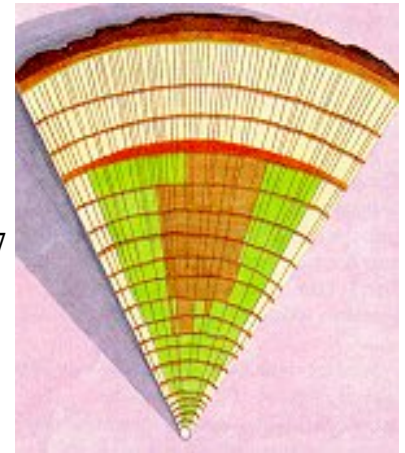


Figure 67

Figure 68

Figure 69

Figure 70

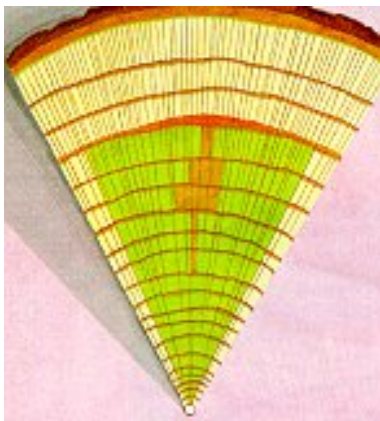


Figure 71

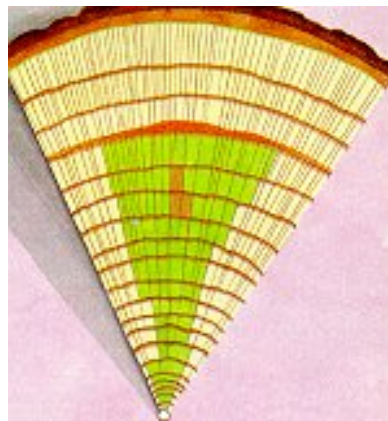


Figure 72

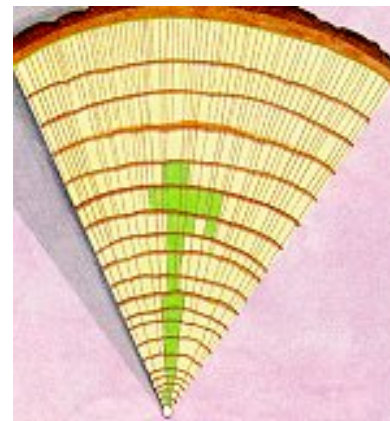
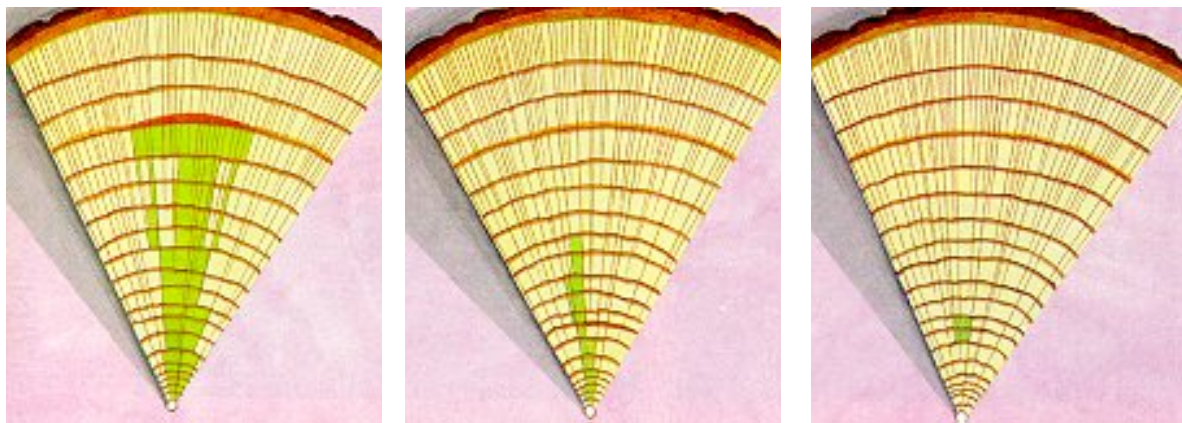


Figure 73



Four sections showing the pattern of discolored and decayed wood associated with multiple wounds on four trees. A multitude of specific multiple patterns is possible depending on the wounds inflicted, their severity, position, and time between wounding. (figs. 74-77)

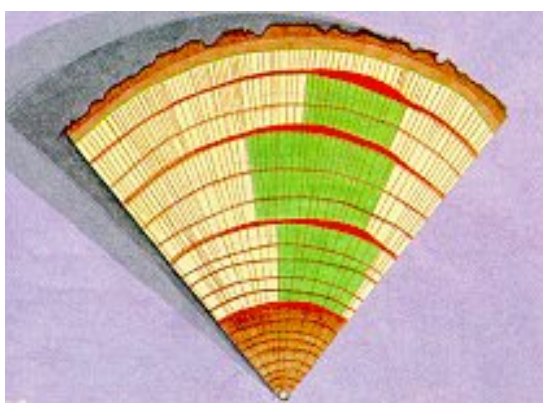


Figure 74



Figure 75

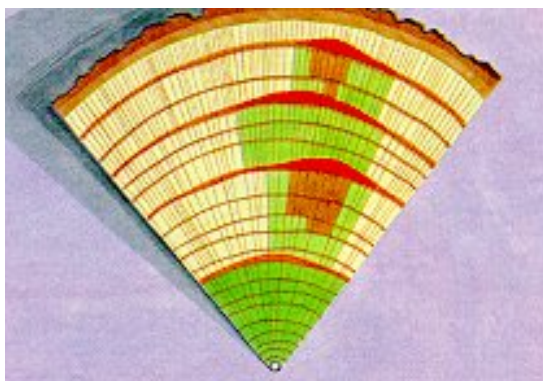


Figure 76

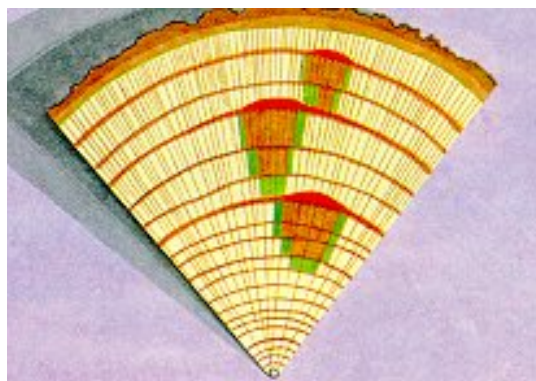


Figure 77

Some Variations and Exceptions

Canker rots have yet another pattern of decay. After the canker rot fungus becomes established, it forms a pressure pad that kills the cambium, thus enlarging the wound. The tree responds by compartmentalizing each new wound. These fungi may kill a tree by girdling. (figs. 78-79)



Figure 79.

Fomes chrysoloma on white fir.

Some decay-causing fungi can attack and kill roots that have not been wounded. But, these fungi may be compartmentalized as they grow from the roots upward into the trunk. The trees attacked by these fungi are often stressed or weakened by other factors first. (figs 80-81)

Figure 78. *Innotus obliquus* on white birch.



Figure 80. *Fomitopsis annosa* on white pine.

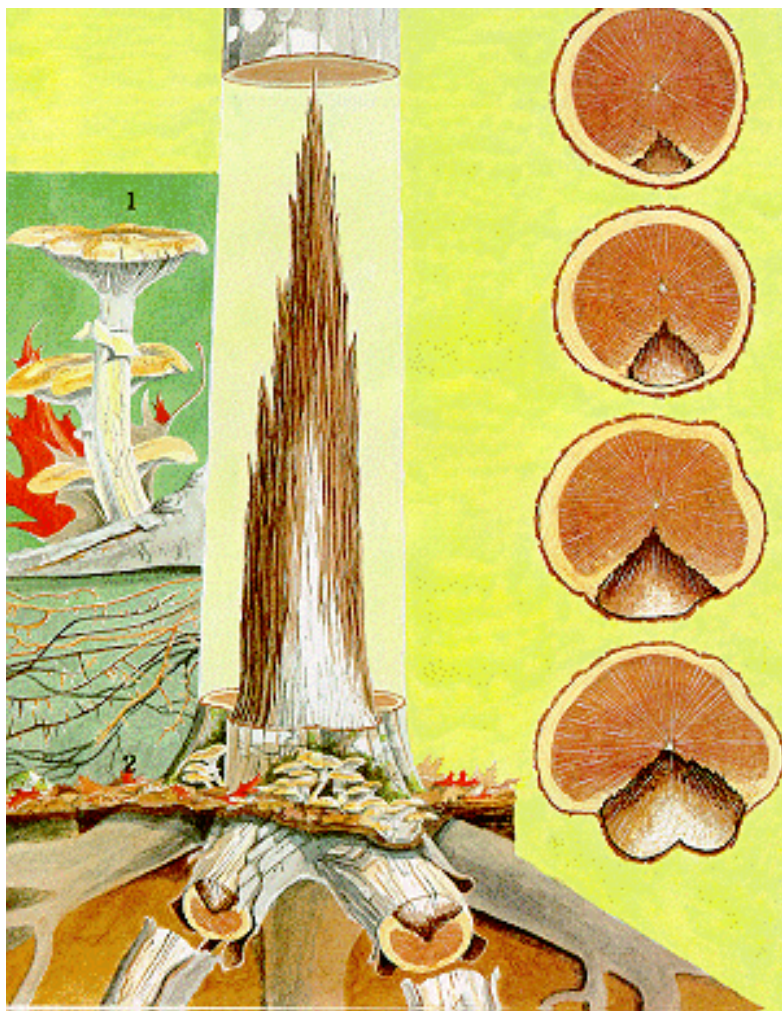


Figure 81. *Armillariella mellea* on red oak.

- 1.Fruit body
- 2.Rhizomorphs

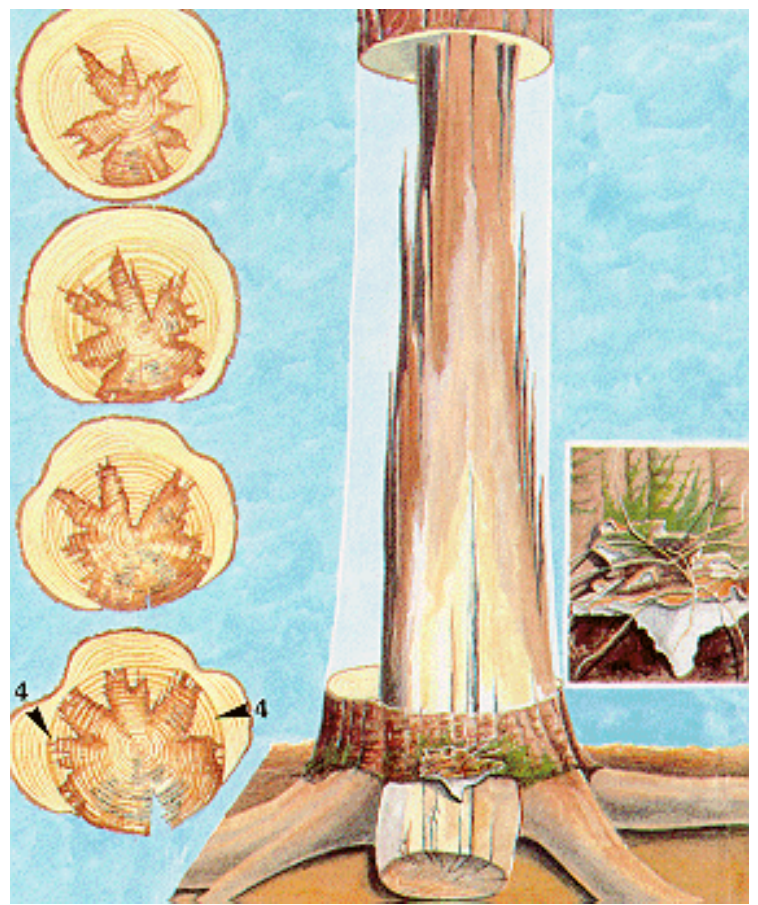
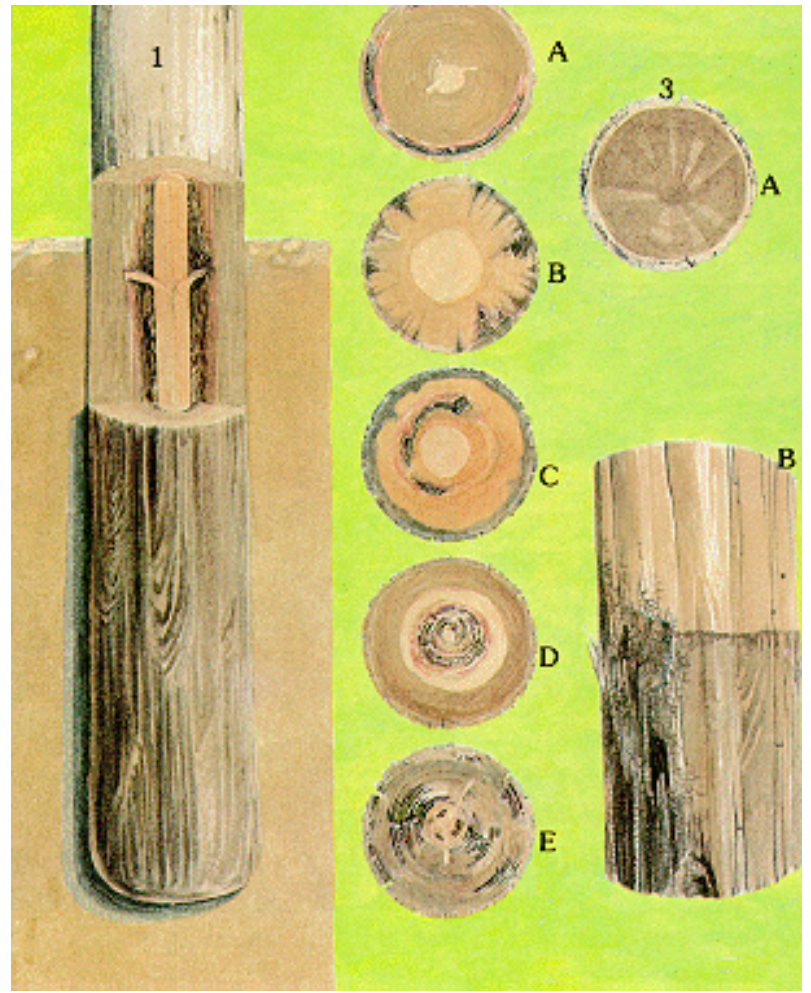


Figure 82

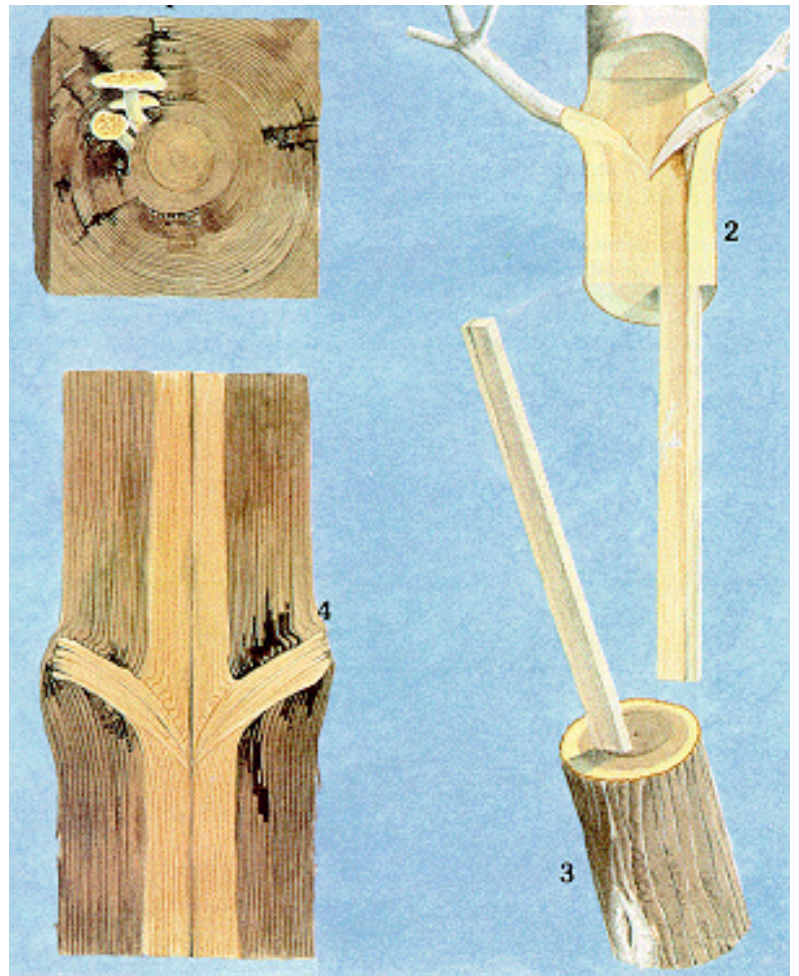
Other species of decay-causing fungi usually attack wood after the tree has been made into a product. In some cases the patterns of decays in the product will still follow the patterns set while the tree was alive. (figs. 82-83)

1. Hot spot for decay in poles, 6 inches above and 18 inches below ground.
2. Typical patterns of internal decay in poles:
A, shell; B, wedge; C, in-between; D, central; E, complete.
3. Typical patterns of external decay in poles:
A, surface rot; B, soft rot.



1. *Lentinus Iepidius*, a destructive fungus.
2. Color change associated with stub.
3. Ring shake associated with wound.
4. Decay starting above and below stub-typical in-between pattern common in southern yellow pine.

Figure 83



Some Additional Details on the Expanded Concept of Tree Decay

Decayed Wood

The Breakdown of Ordered Wood Results in Disordered Material

DISCOLORATION is a process. DECAY is a process. DISCOLORED and DECAYED wood represent the DISORDERED PRODUCT of an ORDERED material.

DISCOLORED WOOD results from an alteration of cell contents. There is only slight or no loss of strength. The tree AND the microorganisms are involved in the processes that result in discolored wood. DECAYED wood is a result of a breakdown of cell walls. There is a great loss of strength.

Many microorganisms are involved in the processes that result in decayed wood. The wood cells have been killed and the decay-causing microorganisms compete among themselves for the dead matter. Many factors affect the rate of decay. The TREE has the greatest influence in the LIMITS of the decay column. Most of the events in the decay process are ORDERED. The classical concept of decay deals mostly with disordered events. It is impossible to regulate disorder.

The expanded concept of decay deals primarily with ORDERED events. The ordered system of trees and microorganisms is constantly impacted by many types of ordered and disordered events: Temperature extremes for short periods, moisture extremes for short periods, changing soil elements, storms, fires, logging operations, soil compaction, flooding, earthquakes, soil grade changes, pollution, chemicals, gas leakage, human-caused epidemics, or diseases and insects.

These factors alone or in combinations greatly affect the MICROORGANISMS and the TREE. The factors may alter the rate of the decay processes but not the patterns of successions and compartmentalization, which are ordered events.

For example,

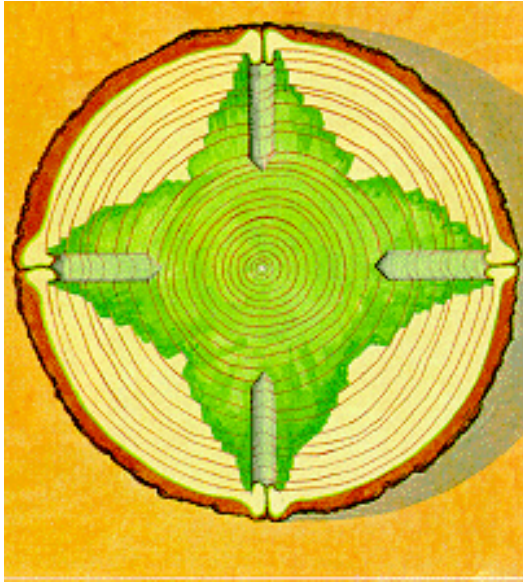
1. SUCCESSIONS, an ORDERED process, often determine RATE. Upset the normal successions and the process will be stalled (not stopped). This can be done by purposely infecting wounds with microorganisms that normally occur late in the succession, such as with species of Trichoderma. The decay process will be stalled.
2. COMPARTMENTALIZATION represents order. Some trees have a stronger wound response than others; they can compartmentalize invaded tissues more effectively than other trees of the same species. The differences are shown in the next three illustrations.

When drill holes are inflicted in strong compartmentalizers, a pattern like this results-very short vertical columns and little to no lateral extension. (fig. 84)

When drill holes are inflicted into moderate compartmentalizers, a pattern like this results-long vertical columns and some lateral extension of discolored wood.(fig. 85)

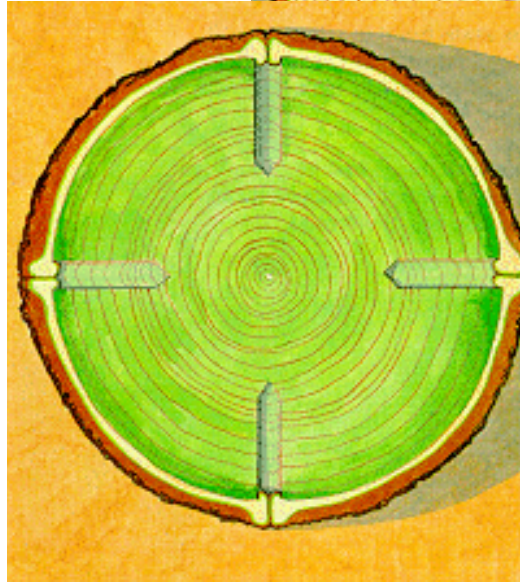
When drill holes are inflicted in weak compartmentalizers, columns that look like this are seen-long vertical columns and complete lateral extension of discolored wood. (fig. 86)

The tree's response in the compartmentalization of discolored wood appears to be under strong genetic control.



Figure

85



86

Figure

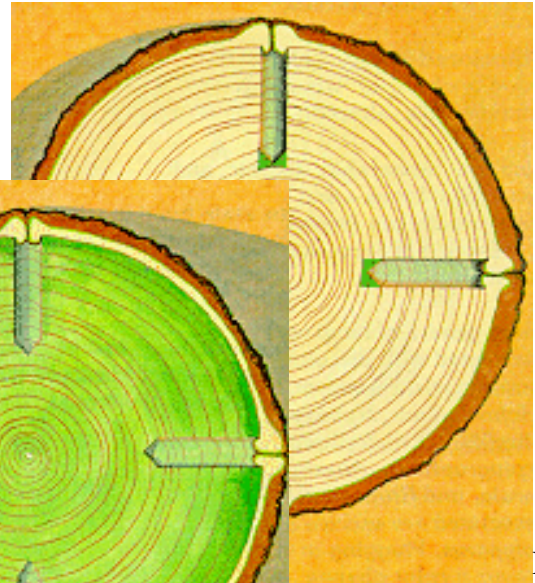


Figure 84

Wood Is Altered by Microorganisms in Five Basic Ways.

Figure 87

Figure 88

There are, of course, many variations to the five basic themes.

Discolored wood. Color of the wood is changed when cell contents are altered.

Bacteria anaerobic, aerobic, and facultative forms - and nondecay fungi usually are involved in these processes, but decay fungi can also be involved.

Some genera of fungi commonly associated with discolored wood are:

Ceratocystis, *Fusarium*, *Trichocladium*, *Hypoxylon*, *Graphium*, *Phialophora*, *Leptographium*, *Alternaria*, *Pullularia*, *Torula*, and *Rhinoctadiella*. Also associated are species of *Fomes* and *Polyporus*. Plugging in vessels can impart a color change, a vertical type of discoloration, but most color changes result from alteration of cell contents in ray parenchyma (radial discoloration). Some slight discolorations can result from the reaction of the tree alone to a wound, but intense discoloration usually involves the interaction of microorganisms with living and dying cells in the tree.

Blue stain fungi in white pine-tangential section through discolored rays. Bacteria are clustered near pits. (fig. 87)

Blue stain fungi in white pine-radial section through discolored rays. Bacteria are clustered in the ray cells.

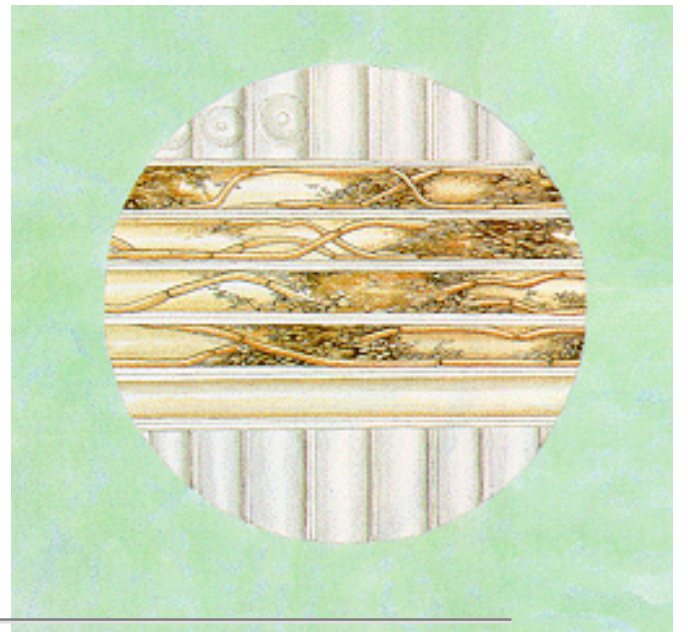
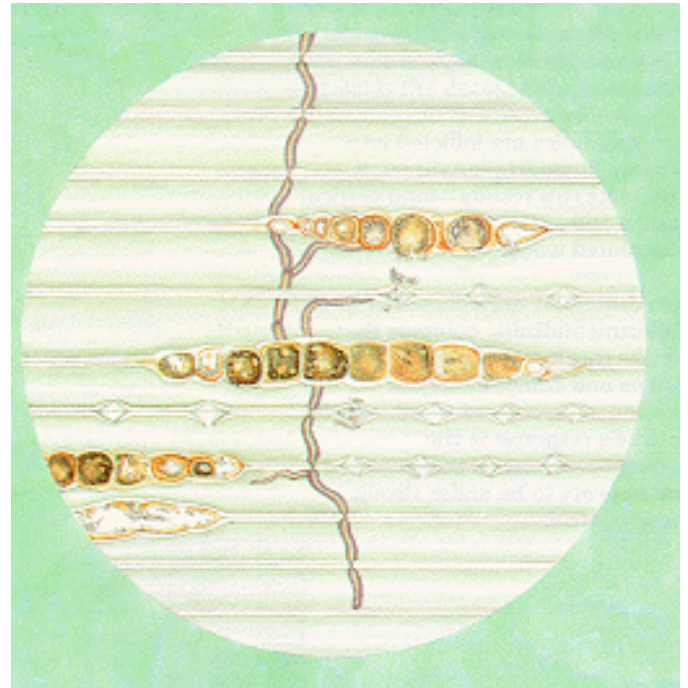


Figure 91 Magnified section of above showing vessel plugs.

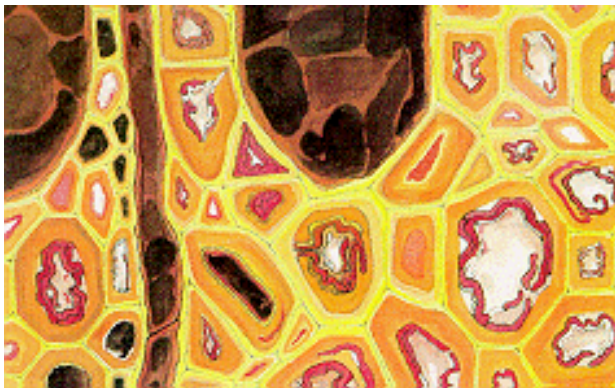


Figure 89
Transverse section through discolored wood surrounding decayed wood in *Populus tremuloides*. (see fig.30)

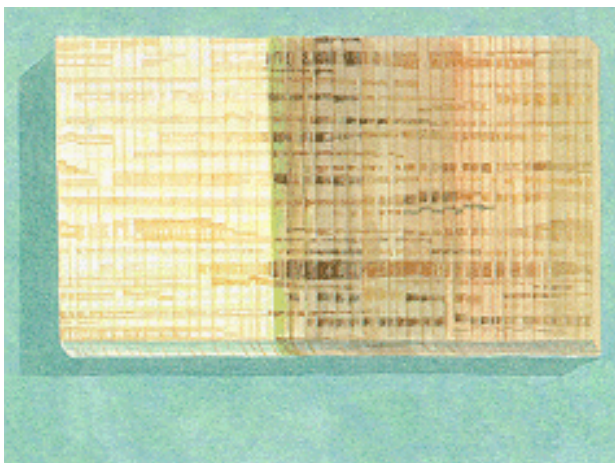
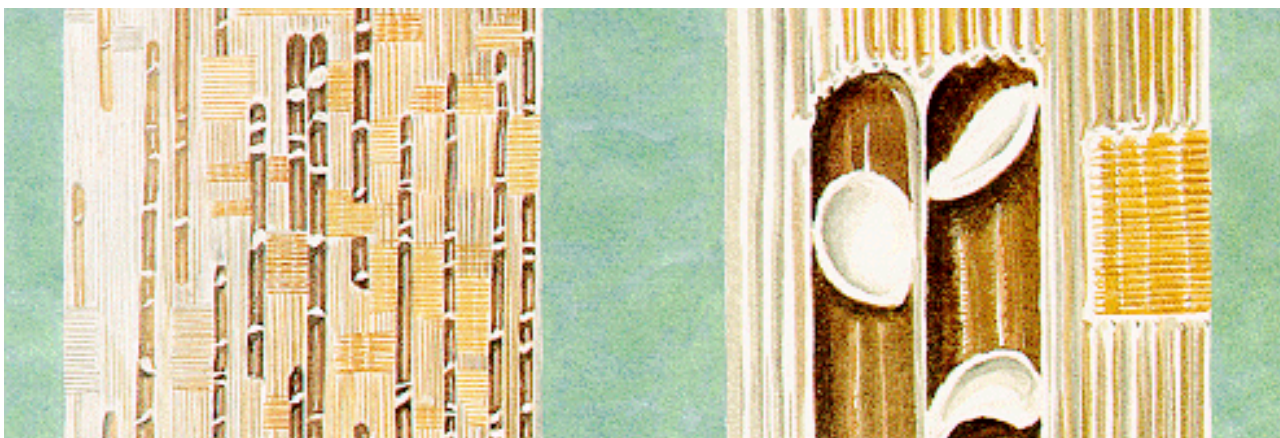


Figure 90
Radial section of discolored rays in red maple



White rot.

The cellulose and lignin are digested at about equal rates. The digestion usually starts from the cell lumens and proceeds towards the middle lamella. Hymenomyces are involved mostly, although species in the Xylariaceae also are associated with white rot (genera-*Hypoxylon* *Xylaria*, *Daldinia*). There are many types of white rot (fleck, stringy, ring, pocket, etc.). These terms describe their macroscopic appearance. White rots occur also in wood products such as utility poles. Some of the most damaging fungi associated with white rots are *Phellinus pini*, *Armillariella mellea*, *Fomitopsis annosa*, *Ganoderma applanatum*, *Oxyporus populinus*, *Phellinus igniarius*, *Innotus glomeratus*, *I. obliquus*, and *Echinodontium tinctorium*. (figs. 92-94)



Figure 92 White rot associated with stub in white pine

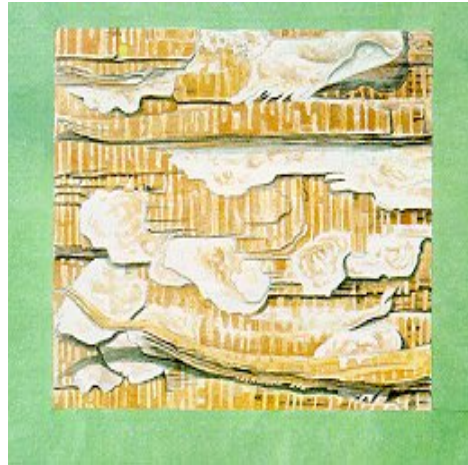


Figure 93 Close-up of white rot in pine.



Figure 94 *Ganoderma lucidum* on eastern hemlock

Brown rot.

The cellulose is digested preferentially, and the lignin is only altered slightly in this type of rot. Brown rots have a shrunken cubical appearance. Brown rots occurs mostly in gymnosperms and in wood products. Some common fungi associated with brown rots are *Phaeolus schweinitzii*, *Poria monticola*, *Lentinus lepideus*, and *Polyporus betulinus*. *Polyporus sulphureus* and *Fomes pinicola* are examples of fungi that cause the less common brown rot in angiosperms. (figs. 95-96)



Figure 95
Brown rot
in southern
yellow pine



Figure 95
Closeup of
brown rot in
pine

Soft rots

The S_2 layer of the middle cell wall is digested by some microorganisms. (fig. 97) Several patterns of digestion occur: Rhomboid cavities, (fig. 98) long spindle-shaped cavities, and a general breakdown of the S_2 layer. Many variations occur. The causal fungi are usually nonhymenomyces- *Phialophora*, *Penicillium*, *Chaetomium*, etc. Soft rots occur mostly in moisture-saturated angiosperm wood products. Little is known about soft rots in living trees.

Bacterial alteration.

Little is known yet about the effects of bacteria alone on wood. In ponded logs, bacteria do invade pits- mostly the microfibrils of the pit margins. Under some conditions, bacteria have been known to digest some cell wall constituents. Some bacteria genera commonly associated with this type of wood alteration are *Pseudomonas*, *Bacillus*, and *Clostridium*. Bacteria are often intimately associated with fungi in the decay process. Many bacteria are facultative forms. (fig. 99)

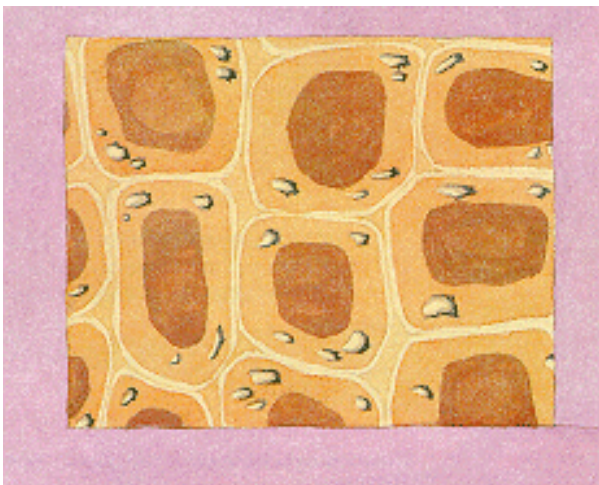


Figure 97 Cavities in cells

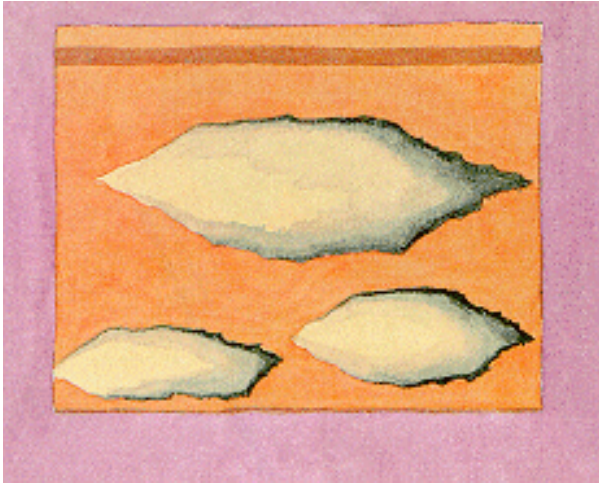


Figure 98 Rhomboid cavities in walls

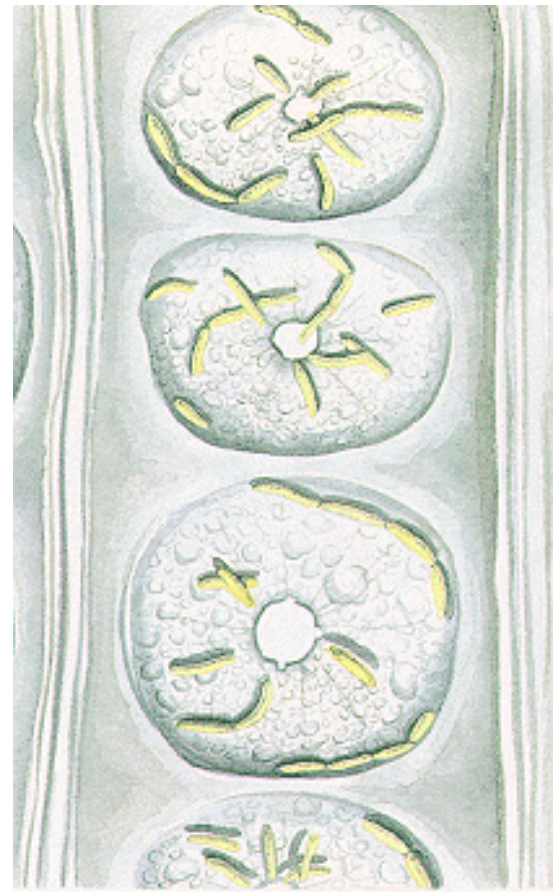


Figure 99 Bacteria on pine pits.

Wetwood

Bacteria are the only major organisms associated with a wood condition called wetwood. The infected wood may or may not be darkly discolored. The infected wood may have a bleached or glassy appearance. (figs 100-101)

Figure 100 Wetwood associated with small stubs in white fir.

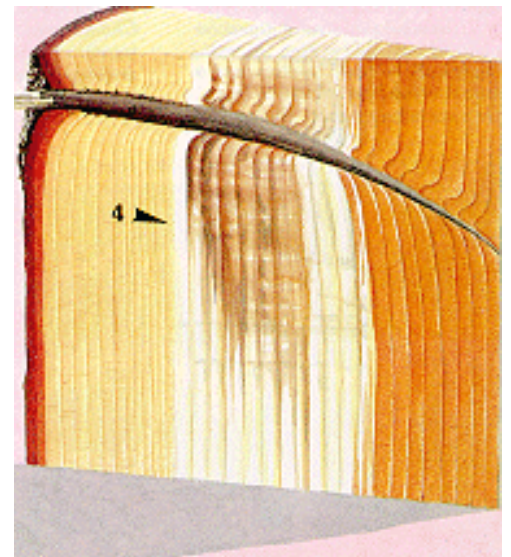




Figure 101 Wetwood zones in white fir

Slash deterioration

Dead wood on the forest floor is inhabited by a wide variety of microorganisms that continue their activities until the wood is completely decomposed. The microorganisms compete among themselves under constantly changing environmental conditions. (fir. 102)



The Following Series of Paintings are Designed to Move the Mind's Eye Into a Tree Through a Wound.

Figure 103



Reference is made again to size relationships because as large as trees are, the decomposition processes are developing at the microscopic level with the organisms and the tree cells.

A large fresh basal wound on a mature sugar maple. (fig.103)

The bark has been torn and the wood is injured deep into the trunk. (fig 104)

The crushed wood at the surface of the wound contains debris and broken pieces of mosses, lichens, and other plants. Small droplets of moisture begin to ooze from the tree. (The red block shows the section magnified in the next painting.)(fig. 105)

Figure 104

Figure 105



Each minute droplet of moisture is like an enormous ocean to the microorganisms. each minute crack is like several grand canyons in width to the microorganisms. (fig. 106)



The minute droplets, too small to be seen by the human eye, are sites for groups of microorganisms to begin growth on the wound. Each droplet is a storehouse of nutrients. The microscopic wood splinters are excellent places for propagules of microorganisms brought in by wind, rain, and insects. The broken tangential faces of the ray sheets begin to show. The broken and crushed ray cells make INFECTION easy for the microorganisms. (fig. 107)

Figure 106

Figure 107



The minute droplets now appear as gigantic globes. After several weeks, many bacteria and fungi begin to grow into the broken wood cells-this is infection. Here a vessel is being infected by nonhymenometous fungi and groups of rod-shaped bacteria. some fungi are also growing into the broken wood cells. Competition for this new space and for the abundance of nutrients is intense. The tree exerts little or no protective force here because the cells have been injured severely or killed by the wound. (fig.108)

Figure 108



A large basal wound after a few weeks on a pine (fig.109)



Figure 109

A copious flow of resinous material is obvious on the wound surface. (fig. 110)



Figure 110

The torn wood, debris, and droplets of moisture and resin become visible at this magnification. (fig. 111)

Here, the droplets act as prisms that reflect the light like minute rainbows. the minute wood splinters now appear as gigantic spears coated with multicolored resin. (fig. 112)



Figure 111

Droplets and torn wood not visible to the human eye now become visible. This is the view small insects have of the wound. (fig.113)



Figure 112

Here, the tangential ends of the rays begin to show. The minute splinters appear as gigantic branches that trap the minute droplets of moisture and resin. Each droplet supports many colonies of competing microorganisms. (fig. 114)



Figure 113



Figure 114

Several weeks later, the fungi and bacteria have begun to infect the wood. A diagrammatic view shows the ray cells infected, and a resin pocket forming as the walls of the surrounding cells begin to dissolve. (fig. 115)

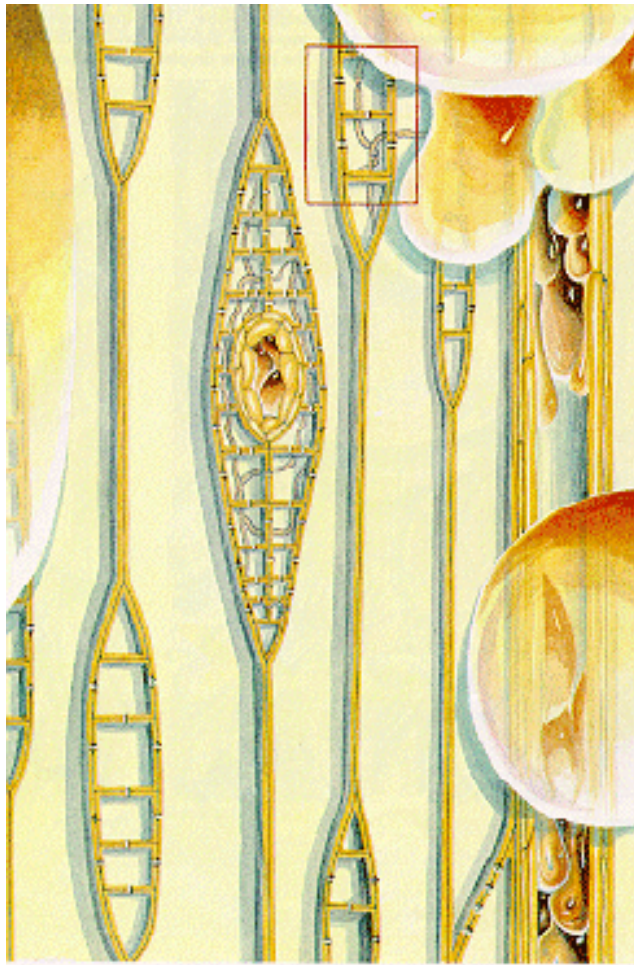


Figure 115

A blue-stain fungus and many bacteria in ray cells. The bacteria are clustered near the pits. The microorganisms begin to digest the cell contents, and blue stain results. (fig.116)



Figure 116

Broken and dying branches are some of the most common infections courts for microorganisms. large branch stubs on trees (that have heartwood) expose heartwood. (fig.117)

Figure 117



A closer view of a branch stub on an old oak. (fig.118)



When the stub surface is sawn smooth, this is the view of the old branch with central heartwood. (fig. 119)



Figure 118

Figure 119

A closer view of the heartwood near the branch center shows the vessels plugged with tyloses. (fig. 120)

Figure 120



A closer view of the sapwood shows the open vessels oozing moisture. (fig. 121)

Figure 121



The vessels appear as large tunnels or caves at this magnification. (fig. 122)

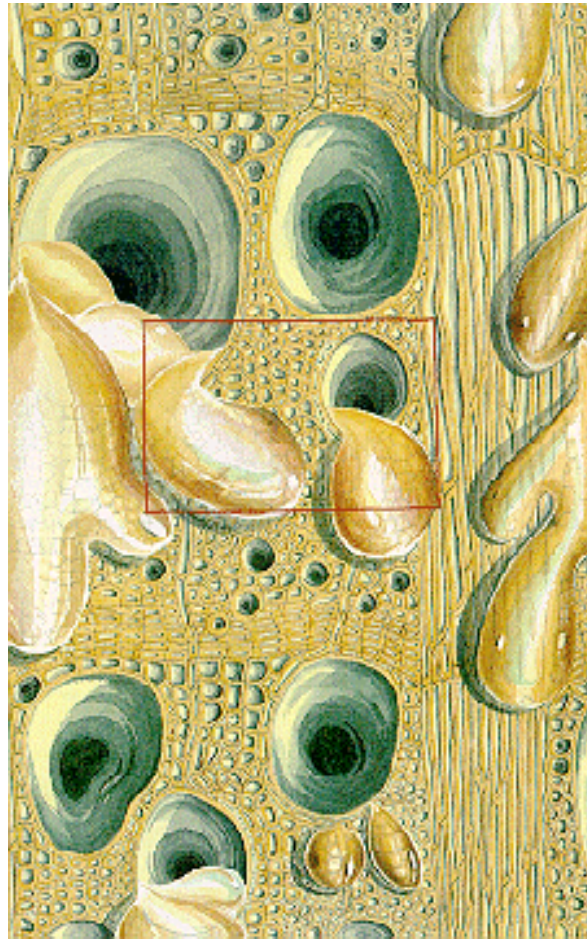


Figure 122

The ordered pattern of fibers surrounding the vessels is shown here. Each microscopic droplet of moisture could be the site or battleground for intense competition by many groups of different microorganisms. (fig. 123)



Figure 123

After several weeks the fungi and bacteria invade. The small dots are the bacteria. The cells have been injured or killed, so invasion is an easy matter for the microorganisms. They reproduce rapidly and begin to interact with the tree. (fig. 124)

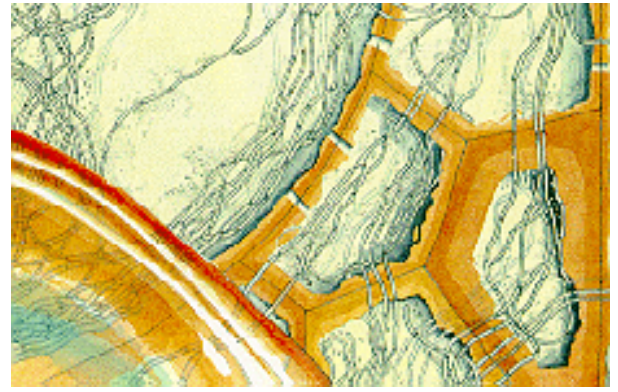


Figure 124

In the end, trees will continue to grow, die, and decay; and grow, die, and deca; and grow, die, and decay. (fig. 125)

COMPARTMENTALIZATION extends the time a tree will grow under the constant stress of wounds.

SUCCESSIONS make it possible for microorganisms to survive against the protective forces of a tree.

AN UNDERSTANDING OF THE EXPANDED CONCEPT OF DECAY GIVES US BETTER OPPORTUNITIES TO REGULATE TREE DECAY.

Figure 125

