

Wanted

Be on the look-out for the

Asian Longhorned Beetle

ATTACKING TREES!

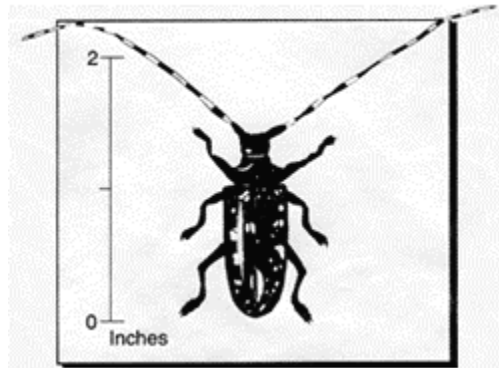


Figure 1. Actual size of the beetle's body is 1-1 ¼ inches.

How can you recognize the beetle?

- Adult beetles have 1-1 ¼" long bodies with 2" long antennae. Their bodies are black with white spots, and their antennae are black and white (*Figure 1*).
- Large (½") round holes on the branches, trunk, or roots are spots where the beetles leave the trees (*Figure 2*).
- Where females chew out a spot to lay their eggs, you may see round, darkened places in the bark (*Figure 2*).
- You may find large piles of sawdust around the base of trees or branches from beetles feeding in trees (*Figure 3*).



Figure 2. *Beetle exit holes (E) and where eggs are laid (O) on a maple tree.*

Figure 3. *Sawdust from beetles chewing their way out of a tree.*

If you see this beetle, please call:

The Department of Agriculture in your State

In Illinois, contact the Illinois Department of Agriculture hotline number at: 1-800-641-3934
