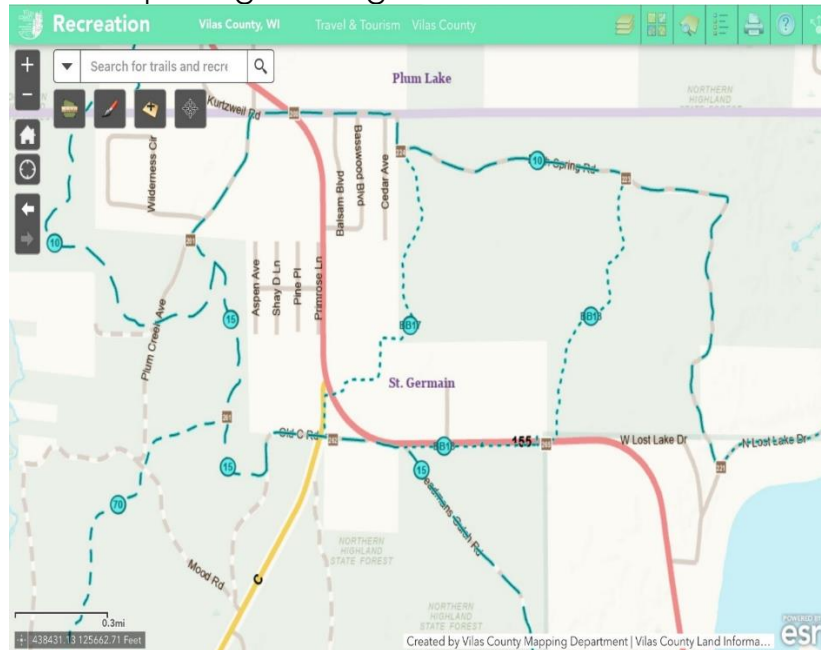


# 2024-25 IMPORTANT BO-BOEN TRAIL UPDATES

## Know Before You Go!

**TRAIL RE-ROUTE:** Due to property development, Bo-Boen Trail #18 (BB 18) had to be **re-routed**. The Trail **behind** Mar-Li's is now closed and has been re-routed to cross Highway 155 just east of P-Dog's Snowmobile Rentals (Pit Stop #49). Mar-Li's (Pit Stop #43) is still accessible from BB 18. Please follow the trail signage for safe passage through this area.



**TRAIL RE-ROUTE:** To best respect the Veteran's Memorial and eliminate a dangerous highway crossing, the spur trail to Subway has been **re-routed**. Snowmobilers will now access Bo-Boen Trail #02 (BB 02) from Corridor 15, cross the Community Center parking lot, go around the outer edge of the old baseball field then head east on School Road, crossing Hwy 155 into the Subway parking lot (Pit Stop #17). Please follow the trail signage for safe passage through this area.



**NEW TRAIL:** The Snowmobile Route along Gravel Pit Road leading to the Vilas County Gravel Pit has been **moved** to a new Trail Corridor 15 to avoid increased vehicle traffic and provide for safer passage between TIN #294 and TIN #283. The new trail, which runs parallel to the route, was a joint effort among the Bo-Boen Snowmobile Club, St Germain ATV Club, the Town of St Germain, and Vilas County. Snowmobiling in the Vilas County Gravel Pit area is prohibited. Please obey the directional signage posted along the new trail.



**TRAIL CLOSURE:** There is a section of Bo-Boen Trail #7 (BB 7) **CLOSED** between TIN #287 and TIN #288. This trail is known to some as the Goat Trail. The trail was **CLOSED** due to numerous trespassing issues and is no longer shown on the printed and most online trail maps. Please obey the **TRAIL CLOSED** signage. Below are two suggested alternate routes to Eagle River. A re-route is being worked on for the 2025-26 season.

Vilas County Recreation Map

