



PRIORITY PROJECTS



Green Genesee/Smart Genesee - Phase II

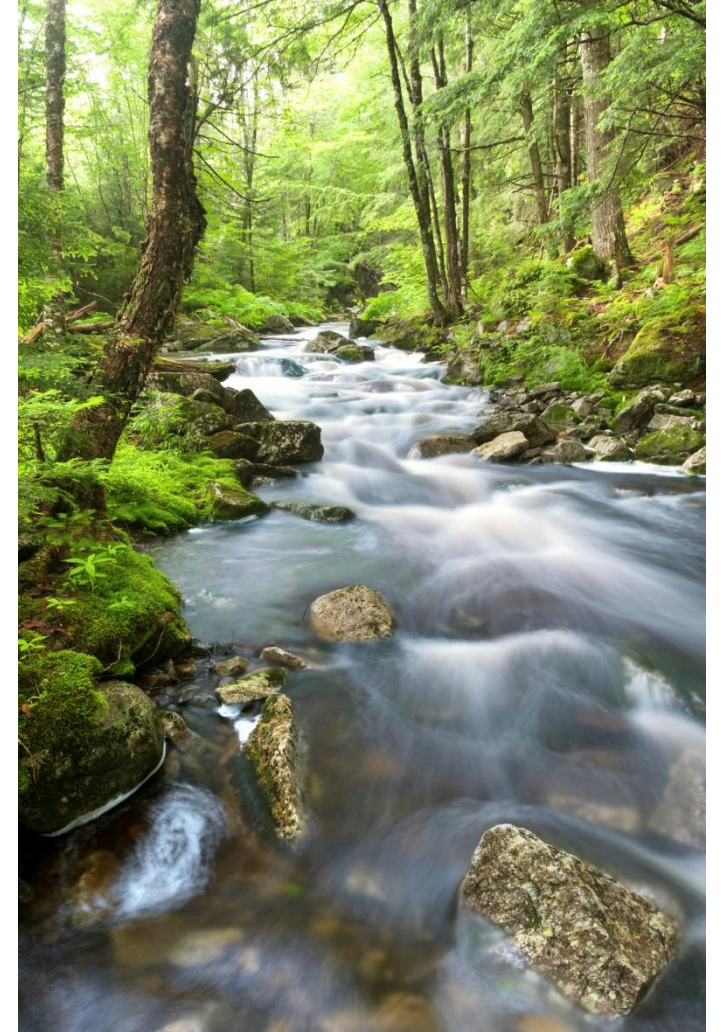
Countywide Resiliency Plan



April 9, 2021

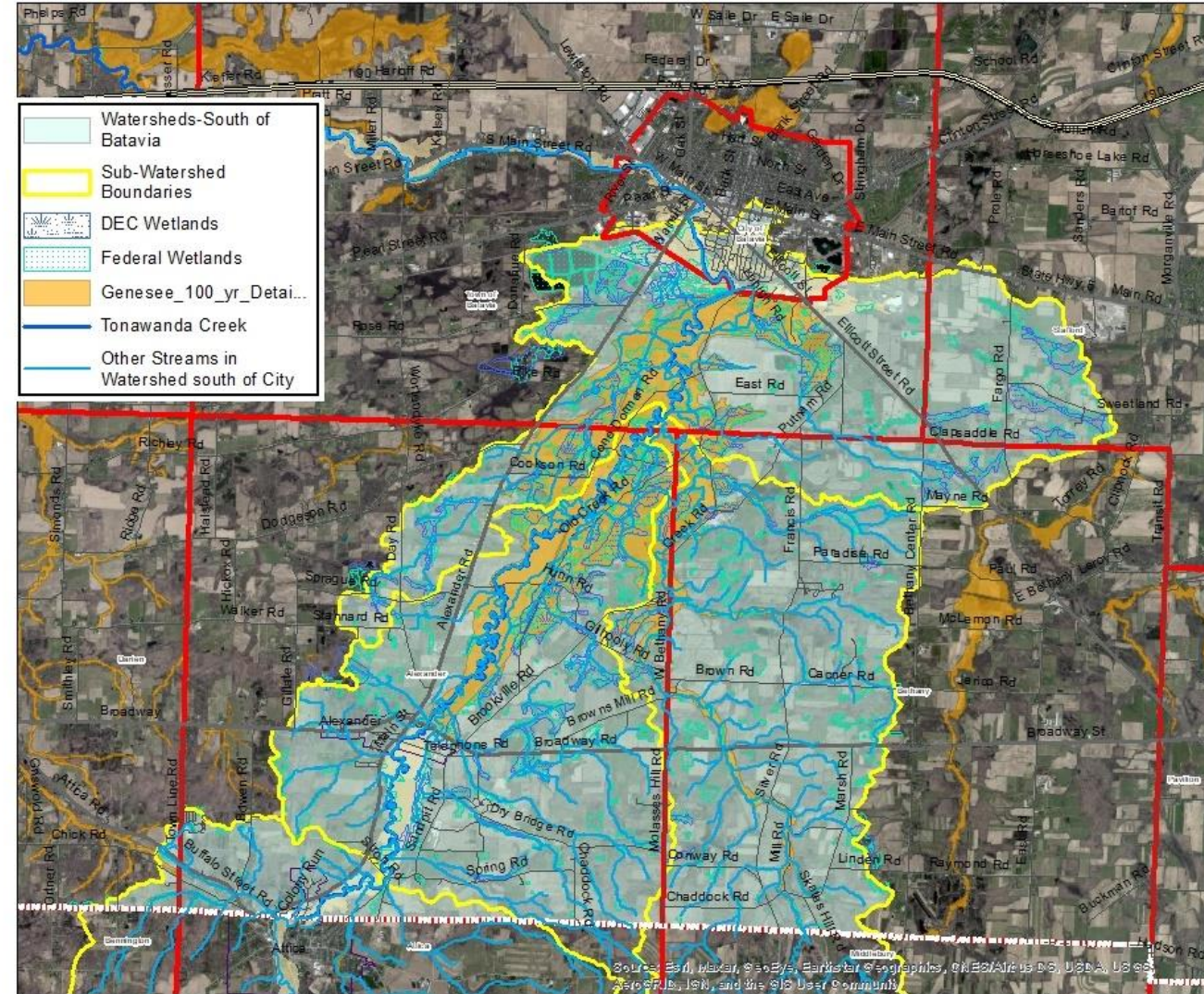
PROJECT CATEGORIES

- Improve flood management/ emergency preparedness
- Conserve land for agriculture, natural resources and recreation and protect water quality
- Improve resiliency of infrastructure
- Expand community capacity and public education



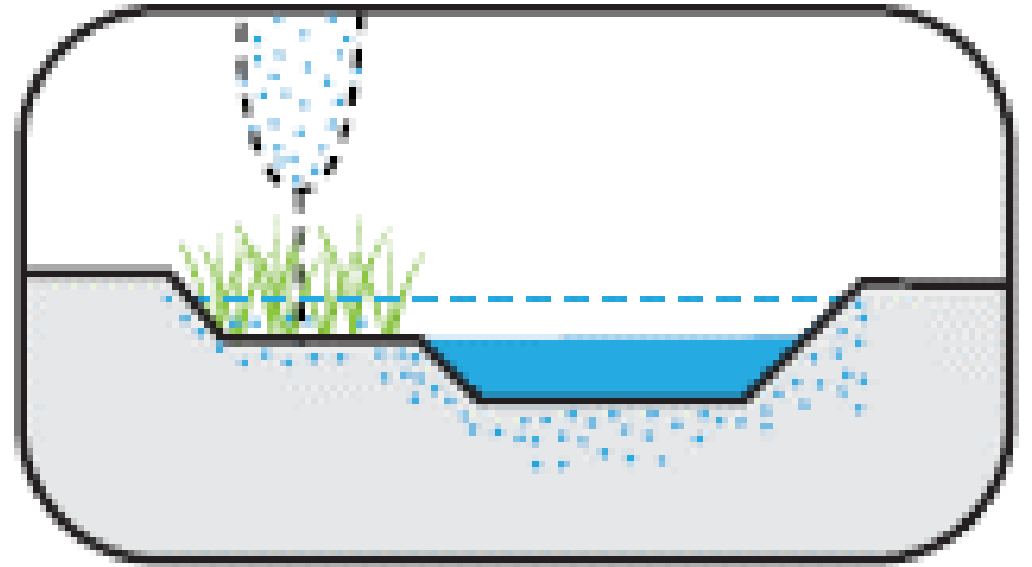
FLOOD MANAGEMENT

- Protect wetlands, flood zones, riparian buffers and forest lands, reconnect Tonawanda Creek to the floodplain, recharge the aquifer and enhance ecological functioning
 - Where are opportunities to conserve land and protect/restore natural lands?



FLOOD MANAGEMENT

- Construct “flood benches” along Tonawanda Creek to reduce damage from flooding
 - To rear of houses along Walnut Street, Batavia
 - Near Prospect Street Bridge, V. Attica
 - Recommended in Resilient NY Flood Mitigation Initiative: Tonawanda Creek

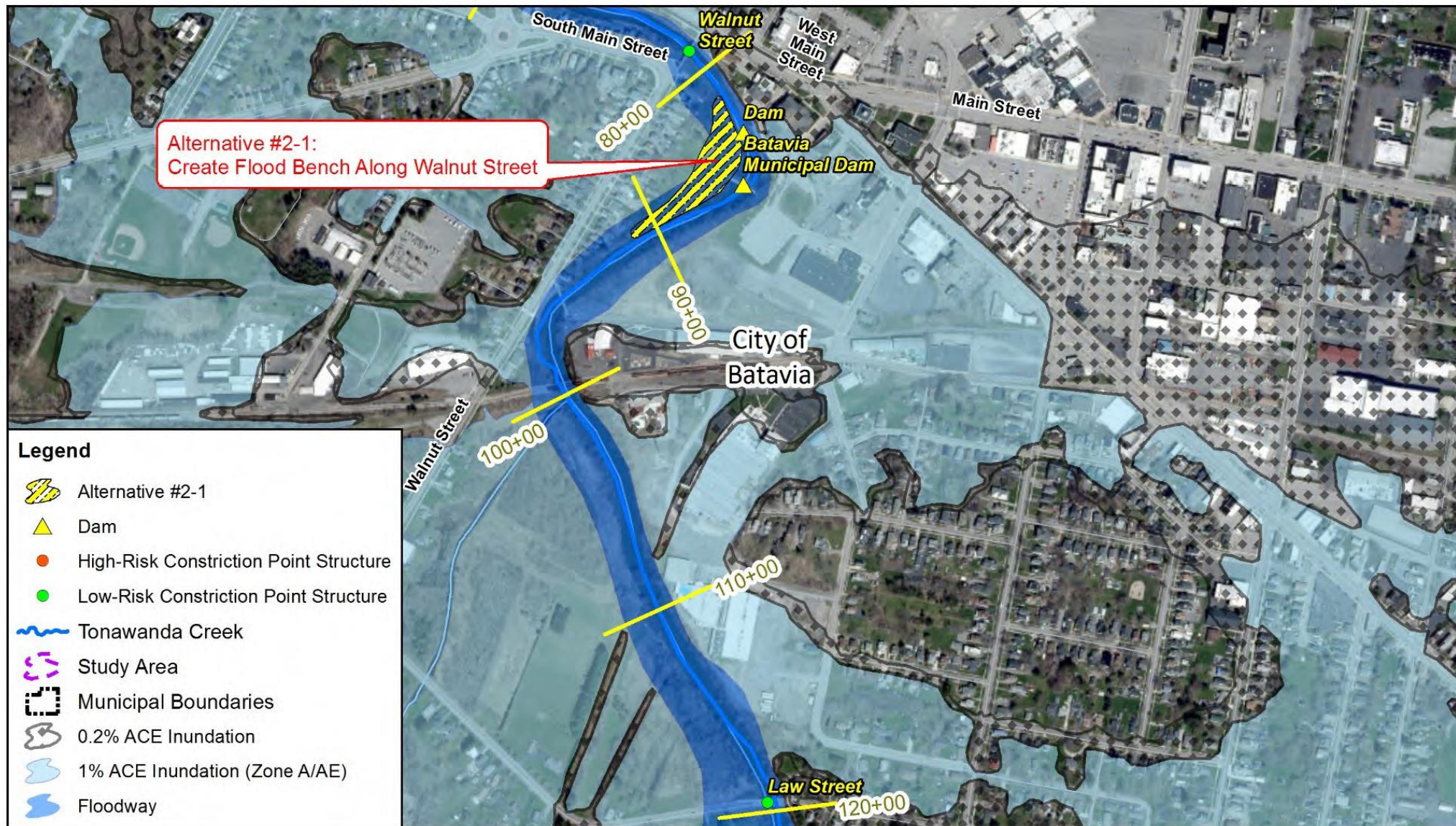




0 500 1,000 2,000 Feet

Resilient NY Initiative
Tonawanda Creek Flood Study
Figure 27. Location Map for Alternative #3-1

This figure was prepared as part of the Hazard Mitigation Study of Ellicott Creek conducted for the New York State Department of Environmental Conservation as part of the Governors Resilient NY initiative. (NYS OGS Contract SC498)



0 500 1,000 2,000
Feet

**Resilient NY Initiative
Tonawanda Creek Flood Study
Figure 25. Location Map for Alternative #2-1**

This figure was prepared as part of the Hazard Mitigation Study of Ellicott Creek conducted for the New York State Department of Environmental Conservation as part of the Governors Resilient NY initiative. (NYS OGS Contract SC498)

CONSERVE NATURAL RESOURCES

Agricultural Best Management Practices

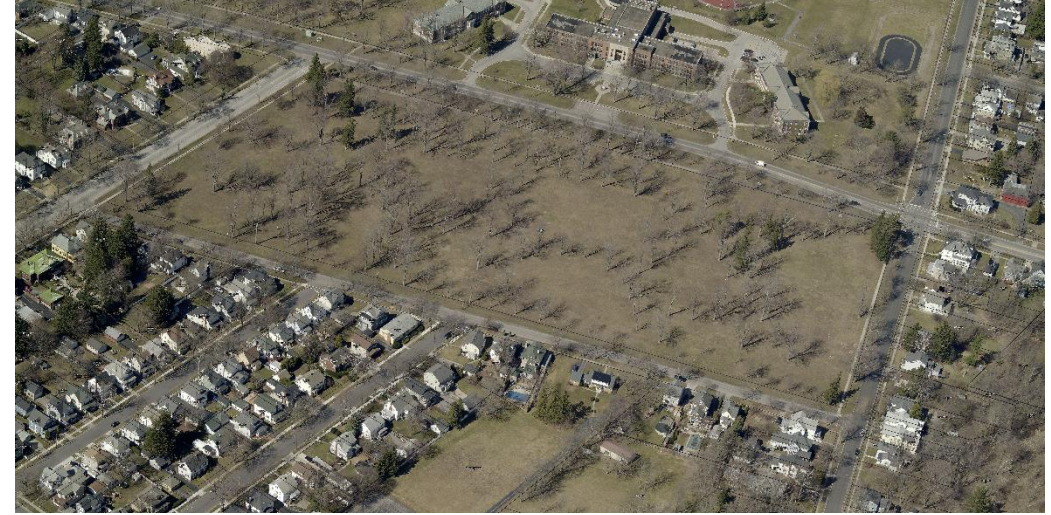
- Support agricultural BMPs
 - cover crop/no till
 - methane flaring
 - manure covers
 - riparian buffers
 - manure storage
 - pesticide management
 - whole farm planning
- Encourage participation in cost sharing
 - Climate Resilient Farming
 - Agricultural Environmental Management



CONSERVE NATURAL RESOURCES

Outdoor Recreation

- Landscaping plan for Centennial Park
 - Green infrastructure to minimize flooding
 - Resilient ground cover
 - Integrate Park with the broader ecological network
- Kayak/ canoe launches along Black Creek, Oatka Creek and Tonawanda Creek
 - East Pembroke in the Town of Batavia
 - Near Tonawanda Creek dam in the City of Batavia by the County Courthouse
 - Accessible facility at Dewitt Park
- Where are other opportunities?



RESILIENT INFRASTRUCTURE

Stormwater Management – Green Infrastructure

- Install green infrastructure to manage stormwater
 - reduce flooding
 - filter contaminants
 - reduce heat island effect
 - improve aesthetics
- Plan for required maintenance



BIOSWALE
(WET or DRY)

Vegetated channel that conveys, reduces, and filters runoff. Dry swales include a filter bed.



RAIN GARDEN AND
BIORETENTION

A planted or ornamental rock-filled depression designed to collect, infiltrate, and filter runoff.

RESILIENT INFRASTRUCTURE

Stormwater Management – City of Batavia

- Complete mapping of the covered stream in the City of Batavia
 - identify sites where building foundations utilize the retaining wall
 - identify opportunities for daylighting the stream
 - resolve issues that hold up development projects



RESILIENT INFRASTRUCTURE

Stormwater Management - Culverts

- Upgrade culverts to accommodate larger flows from storm events while maintaining ecological function
 - Improvements will reduce erosion and improve water quality
 - Concept plans and cost estimates



RESILIENT INFRASTRUCTURE

Street Trees

- Plant and maintain trees along streets and in parks and other public areas
 - Reduce heat island effect
 - Provide shade for residents
 - Enhance outdoor recreation
- Obtain funding for inventory, planning and maintenance through NYS DEC's Urban Forestry grant program



RESILIENT INFRASTRUCTURE

Water Supply

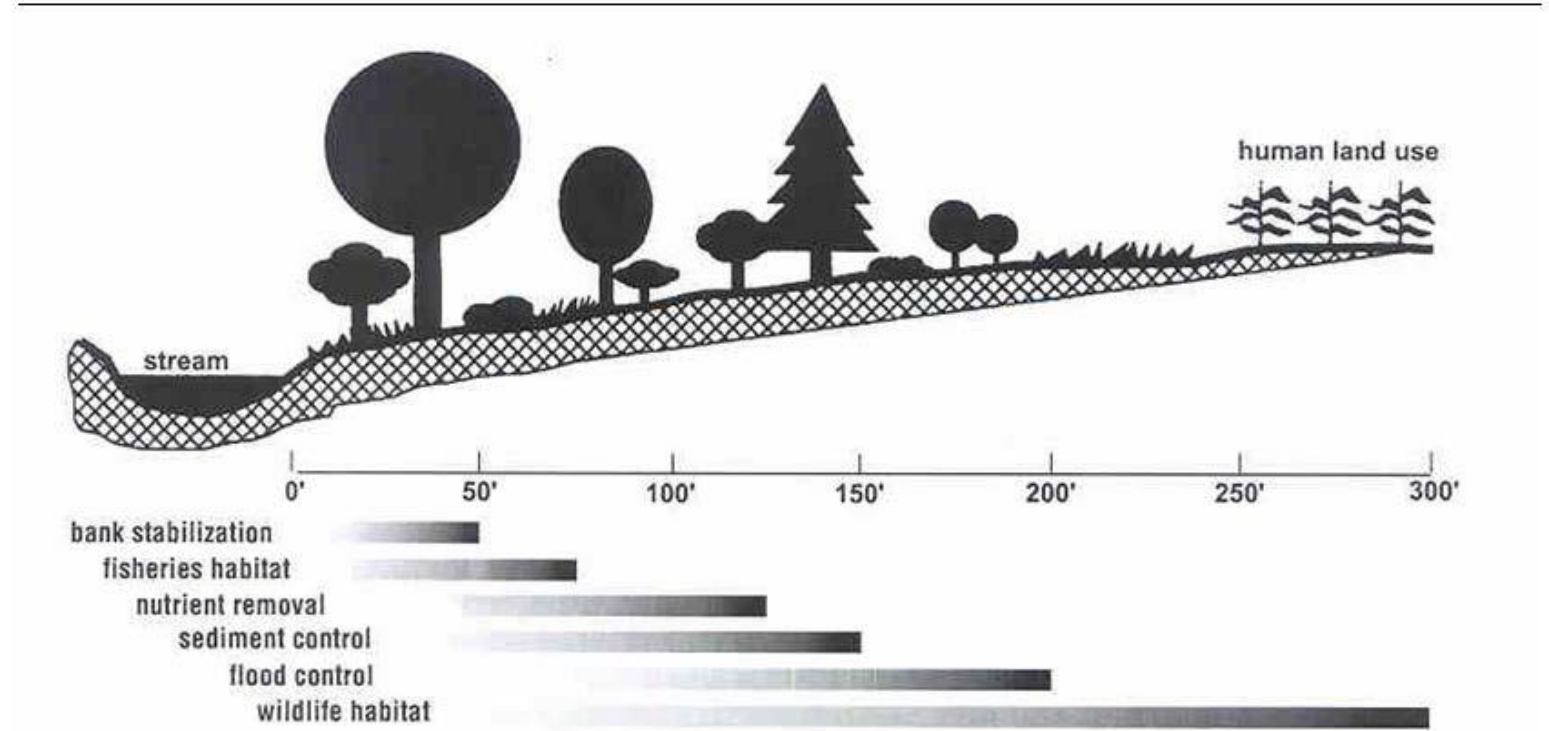
- Expand and improve water supply infrastructure
 - Ensure reliable supply
 - Improve water quality
 - Reduce reliance on wells and local surface water
 - Maintain access to local water sources in case of emergency
 - Ensure that farms have sufficient water supplies for irrigation and livestock.
- Advance projects identified in the Genesee County Water Supply Program



COMMUNITY CAPACITY

Local Government Training

- Training for planning board members and other officials
 - Protect stream buffers and other ecologically sensitive lands during development reviews
- Green infrastructure approaches to stormwater management



Sample buffers for various environmental quality goals

COMMUNITY CAPACITY

Local Waterfront Revitalization

- Identify opportunities for waterfront development, natural resource conservation, flood prevention and recreation along Tonawanda Creek
 - Consider preparing a Local Waterfront Revitalization Plan (LWRP)
 - Obtain grant funding for planning and implementation projects through NYS Dept. of State



COMMUNITY CAPACITY

Online Educational Tools

- Develop online mapping tool
 - Locations of priority projects
 - Funding opportunities
 - Information about resiliency
 - Tools that can be used by municipalities to create and support resiliency projects

