

THE INFORMATION CONTAINED HEREON IS PROPRIETARY AND CONFIDENTIAL TO AQUATEC WATER SYSTEMS, INC. AND SHALL NOT BE USED OR DISCLOSED IN WHOLE OR IN PART WITHOUT FIRST OBTAINING THE WRITTEN PERMISSION OF AQUATEC WATER SYSTEMS, INC.

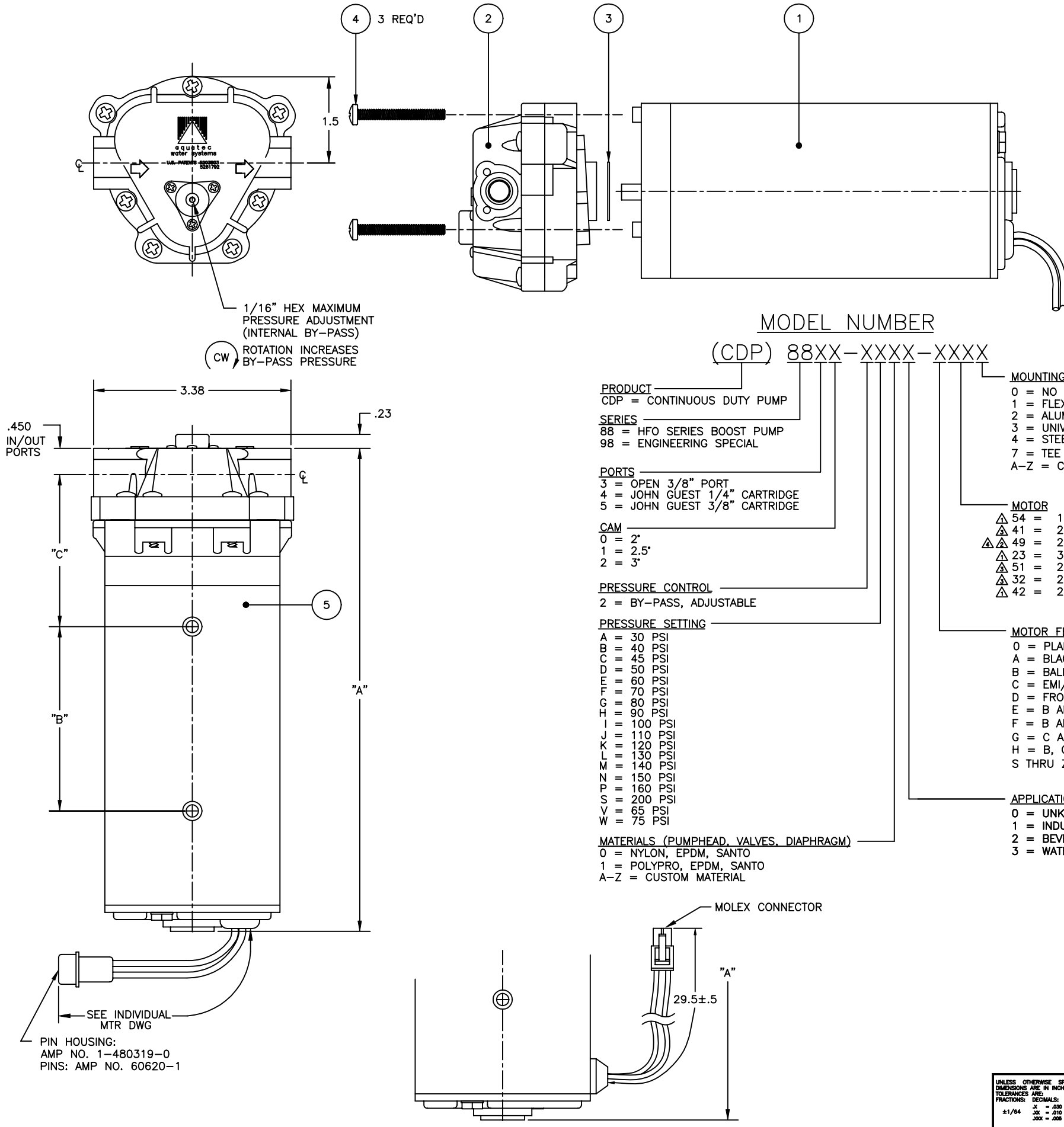
REVISIONS				
REV	DESCRIPTION	DATE	DRAWN	APPROVED
A	ECO# 656, RELEASE FOR PRODUCTION	7/3/96	M.E.	
B	ECO# 695, ADD MOTOR OPTION	9/24/96	M.E.	
C	ECO# 754, ADD MOTOR OPTION	11/5/96	M.E.	
D	ECO# 784, KIT PART NO. CHANGE	11/18/96	M.E.	
E	ECO #1017, ADD -41 MOTOR	4/3/97	M.E.	
F	ECO #1038, DELETE MOUNTING OPTION	4/25/97	M.E.	
G	ECO #1120, ADD -49 MOTOR	9/2/97	M.E.	
H	ECO #1207, ADD -51 MOTOR	3/19/98	E.G.	
J	ECO #1260, ADD -5 MOUNTING BRCKT	5/25/98	E.G.	
K	ECO #1340, ADD NEW CONFIGURATIONS	11/2/98	E.G.	
L	ECO #1421, MODIFIED BASEPLTS NOTES	2/16/99	E.G.	
M	ECO #1509, CHANGE NUMBER SCHEME	7/6/99	E.G.	
N	ECO #1526, CHANGE NUMBER SCHEME	7/28/99	E.G.	
P	ECO #1568, ADD PRESSURE OPTIONS	10/12/99	E.G.	
Q	ECO #1569, UPDATE OPTIONS	11/30/99	E.G.	
R	ECO #1630, UPDATE OPTIONS	01/28/00	M.Z.	

### FITTING OPTIONS

	DESCRIPTION: 3/8" STRAIGHT COMPRESSION FITTING CONNECT TO: 3/8" TUBE PART NO.: 51-172 KIT NO.: 25-145 NOTES: KIT INCLUDES FITTING, GRIPPER NUT, O-RING, AND SCREWS INDIVIDUALLY PACKAGED.
	DESCRIPTION: 3/8" ELBOW COMPRESSION FITTING CONNECT TO: 3/8" TUBE PART NO.: 51-171 KIT NO.: 25-146 NOTES: KIT INCLUDES FITTING, GRIPPER NUT, O-RING, AND SCREWS INDIVIDUALLY PACKAGED.
	DESCRIPTION: 3/8" STEM FITTING CONNECT TO: 3/8" JOHN GUEST PUSH-ON FITTING PART NO.: 51-105 KIT NO.: 25-144 NOTES: FITTING KIT INCLUDES FITTING, O-RING, AND SCREWS INDIVIDUALLY PACKAGED.

### MOUNTING OPTIONS

	DESCRIPTION: SOFT-FLEXIBLE MOUNTING BRACKET PART NO.: 51-109 KIT PART NO.: 25-035 NOTES: STANDARD FITS $\triangle 1$ $\triangle 2$ $\triangle 3$
	DESCRIPTION: ALUMINUM MOUNTING BRACKET PART NO.: 50-046 KIT PART NO.: 25-149 NOTES: FITS $\triangle 1$ $\triangle 2$ $\triangle 3$
	DESCRIPTION: TEE BAR MOTOR MOUNT PART NO.: 51-079 KIT PART NO.: 25-034 NOTES: FITS $\triangle 2$ ONLY
	DESCRIPTION: UNIVERSAL MOUNTING BRACKET PART NO.: 51-104 KIT PART NO.: 25-033 NOTES: FITS $\triangle 1$ $\triangle 2$ $\triangle 3$
	DESCRIPTION: STEEL MOUNTING BRACKET PART NO.: 50-047-01 KIT PART NO.: 25-150 NOTES: FITS $\triangle 2$ ONLY



### MODEL NUMBER

(CDP) 88XX-XXXX-XXXX

<b>PRODUCT</b> CDP = CONTINUOUS DUTY PUMP	<b>MOUNTING BRACKET</b> 0 = NO MOUNTING KIT 1 = FLEX MOUNT 2 = ALUMINUM MOUNT 3 = UNIVERSAL MOUNT 4 = STEEL MOUNT 7 = TEE MOUNT A-Z = CUSTOM MOUNT												
<b>SERIES</b> 88 = HFO SERIES BOOST PUMP 98 = ENGINEERING SPECIAL	<b>MOTOR</b> $\triangle 54$ = 12 VDC 700 RPM $\triangle 41$ = 24 VDC 700 RPM $\triangle 49$ = 24 VDC 1075 RPM $\triangle 23$ = 39 VDC 1000 RPM $\triangle 51$ = 24 VAC 700 RPM $\triangle 32$ = 24 VAC 700 RPM $\triangle 42$ = 24 VAC 870 RPM												
<b>PORTS</b> 3 = OPEN 3/8" PORT 4 = JOHN GUEST 1/4" CARTRIDGE 5 = JOHN GUEST 3/8" CARTRIDGE	<b>"DIMENSIONS"</b> <table border="1"> <thead> <tr><th>"A"</th><th>"B"</th><th>"C"</th></tr> </thead> <tbody> <tr><td><math>\triangle 1</math></td><td>7.28</td><td>2.36</td></tr> <tr><td><math>\triangle 2</math></td><td>7.17</td><td>2.36</td></tr> <tr><td><math>\triangle 3</math></td><td>8.18</td><td>2.86</td></tr> </tbody> </table>	"A"	"B"	"C"	$\triangle 1$	7.28	2.36	$\triangle 2$	7.17	2.36	$\triangle 3$	8.18	2.86
"A"	"B"	"C"											
$\triangle 1$	7.28	2.36											
$\triangle 2$	7.17	2.36											
$\triangle 3$	8.18	2.86											
<b>CAM</b> 0 = 2" 1 = 2.5" 2 = 3"	<b>MOTOR FEATURES</b> 0 = PLAIN END BELLS, SLEEVE BRG, NO EMI, NOT ROTATED A = BLACK END BELLS, SLEEVE BRG, NO EMI, NOT ROTATED B = BALL BEARING C = EMI/RFI PROTECTION D = FRONT END BELL ROTATED 180° E = B AND C F = B AND D G = C AND D H = B, C AND D S THRU Z = CUSTOM (SEE DRAWING)												
<b>PRESSURE CONTROL</b> 2 = BY-PASS, ADJUSTABLE	<b>APPLICATIONS (RECOMMENDED MATERIAL CODE)</b> 0 = UNKNOWN (1) 1 = INDUSTRIAL WATER (0) 2 = BEVERAGE WATER (1) 3 = WATER TREATMENT - PRE-FILTER (0)												
<b>PRESSURE SETTING</b> A = 30 PSI B = 40 PSI C = 45 PSI D = 50 PSI E = 60 PSI F = 70 PSI G = 80 PSI H = 90 PSI I = 100 PSI J = 110 PSI K = 120 PSI L = 130 PSI M = 140 PSI N = 150 PSI P = 160 PSI S = 200 PSI V = 65 PSI W = 75 PSI	<b>MATERIALS (PUMPHEAD, VALVES, DIAPHRAGM)</b> 0 = NYLON, EPDM, SANTO 1 = POLYPRO, EPDM, SANTO A-Z = CUSTOM MATERIAL												

PIN HOUSING:  
AMP NO. 1-480319-0  
PINS: AMP NO. 60620-1

$\triangle 4$  -49 MOTOR OPTION ONLY

PRODUCT CODE CAD# 88XX.DWG	UNLESS OTHERWISE SPECIFIED DIMENSIONS ARE IN INCHES AT 60°F TOLERANCES ARE: FRACTIONS: DECIMALS: ANGLES: ±1/64 .001 .010 ±1/2° ±.001 .001 .001 ±1/2° ±.001 .001 .001 ±1/2°	MATERIAL FINISH APPROVALS DATE DRAWN E.G. 7/6/99	AQUATEC WATER SYSTEMS INC. 17422 Pullman St., Irvine, Ca. 92614 MOTOR/PUMP ASSEMBLY, MATRIX, 8800 SERIES
NEXT ASSY USED ON APPLICATION	GEOMETRIC SYMBOLS PER ANSI-Y14.5 DO NOT SCALE DRAWING	CHECKED DESIGNED SHEET 1 OF 1	SIZE SCALE PART/DWG NO. REV D NONE 88XX-XXXX-XXXX R