



Zenoss Resource Manager Installation Guide

Release 5.2.1

Zenoss, Inc.

www.zenoss.com

Zenoss Resource Manager Installation Guide

Copyright © 2017 Zenoss, Inc. All rights reserved.

Zenoss and the Zenoss logo are trademarks or registered trademarks of Zenoss, Inc., in the United States and other countries. All other trademarks, logos, and service marks are the property of Zenoss or other third parties. Use of these marks is prohibited without the express written consent of Zenoss, Inc., or the third-party owner.

Amazon Web Services, AWS, and EC2 are trademarks of Amazon.com, Inc. or its affiliates in the United States and/or other countries.

Flash is a registered trademark of Adobe Systems Incorporated.

Oracle, the Oracle logo, Java, and MySQL are registered trademarks of the Oracle Corporation and/or its affiliates.

Linux is a registered trademark of Linus Torvalds.

RabbitMQ is a trademark of Pivotal Software, Inc.

SNMP Informant is a trademark of Garth K. Williams (Informant Systems, Inc.).

Sybase is a registered trademark of Sybase, Inc.

Tomcat is a trademark of the Apache Software Foundation.

VMware is a registered trademark or trademark of VMware, Inc. in the United States and/or other jurisdictions.

Windows is a registered trademark of Microsoft Corporation in the United States and other countries.

All other companies and products mentioned are trademarks and property of their respective owners.

Part Number: 1052.17.044

Zenoss, Inc.
11305 Four Points Drive
Bldg 1 - Suite 300
Austin, Texas 78726

Contents

About this guide.....	5
Supported operating environments.....	8
Chapter 1: Installing Resource Manager.....	9
Installing the Resource Manager template.....	9
Optional: Importing Resource Manager images.....	10
Deploying Resource Manager.....	10
Part I: Appliance deployments.....	12
Chapter 2: Installing a Control Center master host.....	13
Creating a virtual machine.....	13
Configuring the Control Center host mode.....	14
Edit a connection.....	15
Set system hostname.....	17
Adding the master host to a resource pool.....	18
Deploying Resource Manager.....	18
Chapter 3: Installing delegate hosts.....	20
Creating a virtual machine.....	20
Configuring the virtual machine mode.....	21
Edit a connection.....	22
Set system hostname.....	24
Editing the /etc/hosts file.....	25
Chapter 4: Configuring a multi-host Control Center cluster.....	27
Adding hosts to the default resource pool.....	27
Chapter 5: Configuring a ZooKeeper ensemble.....	28
ZooKeeper and Control Center.....	28
Understanding the configuration process.....	28
Configuring the master host as a ZooKeeper node.....	30
Configuring delegate host A as a ZooKeeper node.....	31
Configuring delegate host B as a ZooKeeper node.....	32
Installing the ZooKeeper image for Docker Engine.....	34
Starting a ZooKeeper ensemble.....	35
Updating delegate hosts.....	36
Appendix A: Preparing to install without internet access.....	37
Downloading Resource Manager image files.....	37
Installing the repository mirror.....	38

Staging Docker image archive files..... 38

About this guide

Zenoss Resource Manager Installation Guide provides detailed procedures for installing Zenoss Resource Manager (Resource Manager).

Related Resource Manager publications

Title	Description
<i>Zenoss Resource Manager Administration Guide</i>	Provides an overview of Resource Manager architecture and features, as well as procedures and examples to help use the system.
<i>Zenoss Resource Manager Configuration Guide</i>	Provides required and optional configuration procedures for Resource Manager, to prepare your deployment for monitoring in your environment.
<i>Zenoss Resource Manager Installation Guide</i>	Provides detailed information and procedures for creating deployments of Control Center and Resource Manager.
<i>Zenoss Resource Manager Planning Guide</i>	Provides both general and specific information for preparing to deploy Resource Manager.
<i>Zenoss Resource Manager Release Notes</i>	Describes known issues, fixed issues, and late-breaking information not already provided in the published documentation set.
<i>Zenoss Resource Manager Upgrade Guide</i>	Provides detailed information and procedures for upgrading deployments of Resource Manager.

Additional information and comments

If you have technical questions about this product that are not answered in this guide, please visit the [Zenoss Support](#) site or contact Zenoss Support.

Zenoss welcomes your comments and suggestions regarding our documentation. To share your comments, please send an email to docs@zenoss.com. In the email, include the document title and part number. The part number appears at the end of the list of trademarks, at the front of this guide.

Change history

The following list associates document part numbers and the important changes to this guide since the previous release. Some of the changes involve features or content, but others do not. For information about new or changed features, refer to the *Zenoss Resource Manager Release Notes*.

1052.17.044 (5.2.1)

Appliance installation added to the document.

1052.16.335 (5.2.0)

Add a section detailing the supported operating environments.

Remove procedures for installing Control Center clusters. That information is now in the *Control Center Installation Guide*.

Remove the high-availability chapters. High-availability installations are now performed by Zenoss personnel.

Remove the appliance installation chapters. The chapters will be replaced when the appliances are available.

The instructions for downloading and installing the software artifacts for offline deployments are now in an appendix.

1052.16.316

Update release numbers.

1052.16.291

Update release numbers.

1052.16.277

Update release numbers.

1052.16.264

Update release numbers.

1052.16.257

Added supported operating environments and updated release numbers.

1052.16.207

Update release numbers.

1052.16.176

Update release numbers.

1052.16.153

Update release numbers.

1052.16.146

Update release numbers.

1052.16.125

Refine the procedure for creating the application data thin pool.

1052.16.118

Add support for Resource Manager 5.1.2.

Add a substep to create the docker override directory.

1052.16.111

Add this document change history.

Add chapters describing how to install the Resource Manager appliance.

Chapters are organized into parts.

Docker configuration steps now add the storage driver flag (`-s devicemapper`) to the `/etc/sysconfig/docker` file.

Docker needs a longer startup timeout value, to work around a known Docker issue with the `devicemapper` driver. Docker configuration steps now include adding `TimeoutSec=300`.

Rather than editing `/lib/systemd/system/docker.service`, Docker configuration steps now include adding a `systemd` override file.

Add a symlink to `/tmp` in `/var/lib/docker`.

Update the commands for starting and testing a ZooKeeper ensemble.

Add a procedure for updating the `SERVICED_ZK` value on resource pool hosts that are not members of a ZooKeeper ensemble.

Add a reference topic for the ZooKeeper variables required on hosts in a Control Center cluster.

Add procedures for configuring an NTP server and clients for offline deployments.

Add step to install the Nmap Ncat package, which is used to check ZooKeeper ensemble status.

1052.16.060

Planning information is now in the *Zenoss Resource Manager Planning Guide*.

Information about how to start and configure Resource Manager is now in the *Zenoss Resource Manager Configuration Guide*.

New procedures are included, for installing without internet access, and for installing high-availability deployments.

Supported operating environments

The Resource Manager application is deployed in and managed by Control Center. The supported operating environments of Resource Manager are the environments that Control Center supports at a given release. The following sections identify the supported operating environments of Resource Manager.

Resource Manager, Control Center, and operating systems

The following table identifies the supported combinations of Resource Manager, Control Center, and operating system releases.

Resource Manager Release	Control Center	
	Release	Host OS
5.2.0, 5.2.1	1.2.0, 1.2.1, 1.2.2	RHEL/CentOS 7.1, 7.2, or 7.3 (64-bit)
5.1.9, 5.1.10	1.1.9, 1.2.0	RHEL/CentOS 7.1 or 7.2 (64-bit)
5.1.8	1.1.5, 1.1.6, 1.1.7, 1.1.8, 1.1.9	RHEL/CentOS 7.1 or 7.2 (64-bit)
5.1.7	1.1.5, 1.1.6, 1.1.7, 1.1.8	RHEL/CentOS 7.1 or 7.2 (64-bit)
5.1.6 (internal release only)	(none)	(none)
5.1.4, 5.1.5	1.1.5, 1.1.6, 1.1.7	RHEL/CentOS 7.1 or 7.2 (64-bit)
5.1.3	1.1.2, 1.1.3, 1.1.5	RHEL/CentOS 7.1 or 7.2 (64-bit)
5.1.2	1.1.2, 1.1.3	RHEL/CentOS 7.1 or 7.2 (64-bit)
5.1.1	1.1.1, 1.1.2	RHEL/CentOS 7.1 or 7.2 (64-bit)

Hypervisors

Hypervisor	Versions
VMware vSphere	5.0, 5.1, 5.5, 6.0

Public cloud platforms

Amazon Web Services (AWS) is fully supported.

Microsoft Azure is supported only for collector pools. Deploying a full Control Center cluster to operate Resource Manager is NOT supported on Microsoft Azure.

Supported clients and browsers

Resource Manager supports the same client operating systems and web browsers that Control Center supports. For more information, refer to Control Center documentation.

1

Installing Resource Manager

This chapter describes how to install Resource Manager on a Control Center cluster. For more information about creating a Control Center cluster, refer to the following documents:

- *Control Center Planning Guide*
- *Zenoss Resource Manager Planning Guide*
- *Control Center Installation Guide*

If you are installing on a Control Center cluster that does not have internet access, perform the procedures in [Preparing to install without internet access](#) on page 37 before performing the procedures in this chapter.

Installing the Resource Manager template

Use this procedure to install the Resource Manager service definition template on the Control Center master host.

If you are installing on a Control Center cluster that does not have internet access, perform the procedures in [Preparing to install without internet access](#) on page 37 before performing this procedure.

- 1 Log in to the Control Center master host as `root`, or as a user with superuser privileges.
- 2 Install the Resource Manager template file.

With internet access:

```
yum --enablerepo=zenoss-stable install -y zenoss-resmgr-service-5.2.1
```

Without internet access:

```
yum --enablerepo=zenoss-mirror install -y zenoss-resmgr-service-5.2.1
```

The template file is stored in `/opt/serviced/templates`.

- 3 Authenticate to the Docker Hub repository.

Replace *User* with the name of your Docker Hub account.

```
docker login -u User
```

The `docker` service prompts you for the password of the Docker Hub account, and saves a hash of the credentials in the `$HOME/.docker/config.json` file (root user account).

Optional: Importing Resource Manager images

Use this procedure to import the Resource Manager images into the local registry. This procedure is only required on a Control Center cluster that does not have internet access. For more information, see [Preparing to install without internet access](#) on page 37.

- 1 Log in to the Control Center master host as `root`, or as a user with superuser privileges.
- 2 Change directory to `/root`.

```
cd /root
```

- 3 Import the images.

The images are contained in self-extracting archive files.

```
for image in install-*.run
do
  echo -n "$image: "
  ./$image
done
```

Importing begins when you press the `y` key. If you press `y` and then press **Enter**, the current image is imported, but the next one is not.

- 4 List the images in the registry.

```
docker images
```

The result should include one image for each archive file.

- 5 Optional: Delete the archive files.

```
rm -i ./install-*.run
```

Deploying Resource Manager

Use this procedure to add the Resource Manager application to Control Center, and to pull application images into the local registry.

- 1 Log in to the Control Center master host as a user with `serviced` CLI privileges.
- 2 Add the Resource Manager application template to Control Center.

```
serviced template add /opt/serviced/templates/zenoss*.json
```

On success, the `serviced` command returns the template ID.

- 3 Identify the resource pool to which the master host belongs.

```
serviced host list
```

- 4 Deploy the application.

- Replace *Template-ID* with the identifier Resource Manager template
- Replace *Pool* with the name of the resource pool to which the master host belongs (single-host system) or to which the delegate hosts belong (multi-host system)

- Replace *Deployment* with a name for this deployment (for example, *Test* or *Production*)

```
serviced template deploy Template-ID Pool Deployment
```

Control Center pulls Resource Manager images into the local registry, or just tags the images.

Resource Manager is ready to be configured for your environment. For more information, refer to the *Zenoss Resource Manager Configuration Guide*.

Part I: Appliance deployments

The chapters in this part describe how to install the Resource Manager appliance, a pre-configured virtual machine that is ready to deploy to your hypervisor. The instructions include a variety of options for customizing your deployment for your environment.

2

Installing a Control Center master host

This chapter describes how to install a Resource Manager appliance package as a Control Center master host.

The procedures in this chapter configure a Control Center master host that functions as both master and delegate. Perform the procedures in this chapter whether you are configuring a single-host or a multi-host deployment. (For more information about configuring a multi-host deployment, see [Configuring a multi-host cluster](#).)

The procedures in this chapter do not include adding storage for backups created by Control Center. Hypervisor backups of a Resource Manager host do not capture the information needed to restore a system successfully, and Zenoss strongly recommends using the Control Center backup and restore features instead of hypervisor backups. For more information about the Control Center backup and restore features, refer to the *Control Center Reference Guide*.

Creating a virtual machine

You can create a virtual machine for the Resource Manager appliance with VMware vSphere.

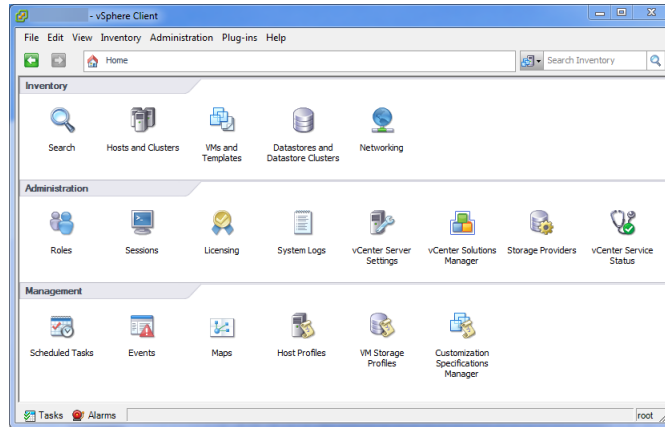
Creating a virtual machine with vSphere

To perform this task, you need:

- A VMware vSphere client
- Permission to download Resource Manager software from the [Zenoss Support](#) site

This procedure installs Resource Manager master OVA packages as a virtual machine managed by vSphere Server version 5.5.0, using VMware vSphere Client 5.5.0. The procedure is slightly different with different versions of VMware vSphere Client. There are two separate OVA packages, one for the master host and one for delegates.

- 1 Download the Resource Manager master host OVA file from the [Zenoss Support](#) site to your workstation.
- 2 Use the VMware vSphere Client to log in to vCenter as `root`, or as a user with superuser privileges, and then display the **Home** view.

Figure 1: vSphere client Home view

- 3 From the **File** menu, select **Deploy OVF Template**.
- 4 In the **Source** panel, specify the path of the Resource Manager master package, and then click **Next**.
- 5 In the **OVF Template Details** panel, click **Next**.
- 6 In the **Name and Location** panel, provide a name and a location for the server.
 - a In the **Name** field, enter a new name or use the default.
 - b In the **Inventory Location** area, select a data center for the virtual machine.
 - c Click **Next**.
- 7 In the **Host / Cluster** panel, select a host system, and then click **Next**.
- 8 In the **Storage** panel, select a storage system with sufficient space for your deployment, and then click **Next**.
- 9 In the **Disk Format** panel, select **Thin Provision**, and then click **Next**.
- 10 In the **Ready to Complete** panel, review the deployment settings, and then click **Finish**.
Do not check **Power on after deployment**.
- 11 Navigate to the new virtual machine's **Getting Started** or **Summary** tab, and then click **Edit virtual machine settings**.
- 12 Optional: Update the memory assigned to the machine.
 - a In the **Virtual Machine Properties** dialog box, select **Memory** in the **Hardware** table.
 - b In the **Memory Configuration** area, set the **Memory Size** field to 16GB (multi-host deployments) or 32GB (single-host deployments).
For single-host deployments, you can assign a greater amount of RAM.
- 13 Optional: Update the number of CPU sockets assigned to the machine, if desired.
Only 4 CPUs are needed for multi-host deployments.
 - a In the **Virtual Machine Properties** dialog box, select **CPUs** in the **Hardware** table.
 - b Set the **Number of virtual sockets** field to 4 (multi-host deployments), and set the **Number of cores per socket** field to 1.
- 14 At the bottom of the **Virtual Machine Properties** dialog box, click **OK**.
- 15 On the new virtual machine's **Getting Started** tab, click **Power on virtual machine**, and then click the **Console** tab.

Configuring the Control Center host mode

Perform this procedure immediately after creating and starting a Control Center host. All Control Center deployments must include one system configured as the master host.

- 1 Gain access to the console interface of the Control Center host through your hypervisor console interface.

Figure 2: Initial hypervisor console login prompt

```

Welcome to Zenoss Service Dynamics

After initial setup, the Control Center UI can be accessed by
browsing to:

https://zsd-master
(default username/password is ccuser/zsd)

Ensure that zsd-master is resolvable to 10.88.121.246, either through your
DNS system or through a HOSTS entry on the browser client. For more
information refer to the installation notes.

You can log in to this console to perform administrative tasks such
as setting up networking and safely rebooting this system. The
root password defaults to 'zsd'

Linux Kernel 3.10.0-514.2.2.el7.x86_64 on an x86_64
zsd-master login: _

```

- 2 Log in as the `root` user.
The initial password is provided in the console.
- 3 The system prompts you to enter a new password for `root`.

Note Passwords must include a minimum of eight characters, with at least one character from three of the following character classes: uppercase letter, lowercase letter, digit, and special.

- 4 The system prompts you to enter a new password for `ccuser`.
The `ccuser` account is the default account for gaining access to the Control Center browser interface.

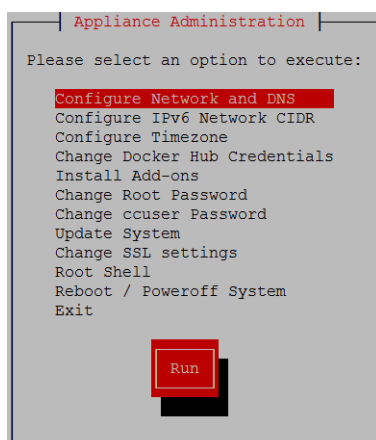
Edit a connection

The default configuration for network connections is DHCP. To configure static IPv4 addressing, perform this procedure.

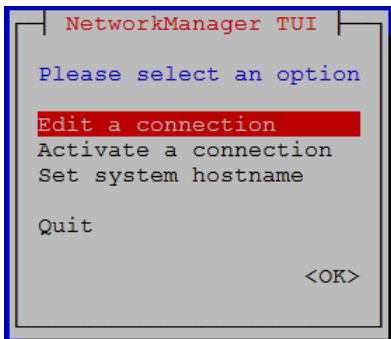
To navigate in the text user interface (TUI):

- To move forward or backward through options, press the arrow keys or press **Tab** or **Shift+Tab**.
- To display a menu or choose an option, press **Enter**.

- 1 Gain access to the Control Center host, through the console interface of your hypervisor, or through a remote shell utility such as *PuTTY*.
- 2 Log in as the `root` user.

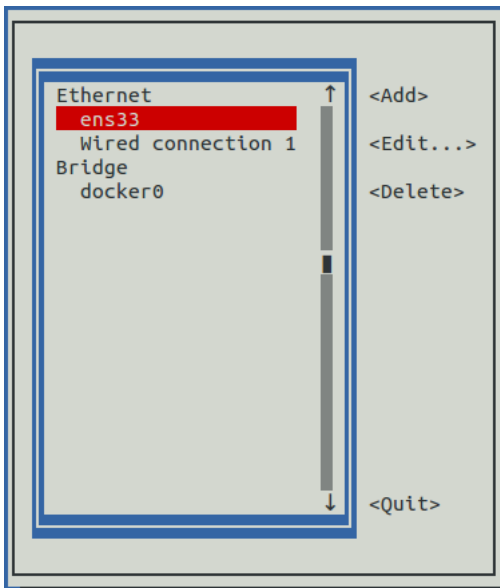


- 3 Select the **NetworkManager TUI** menu as follows:
 - a In the **Appliance Administration** menu, select **Configure Network and DNS**, and then press **Enter**.



- 4 On the **NetworkManager TUI** menu, select **Edit a connection**, and then press **Enter**. The TUI displays the connections that are available on this host.

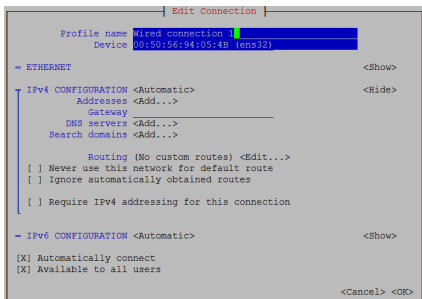
Figure 3: Example: Available connections



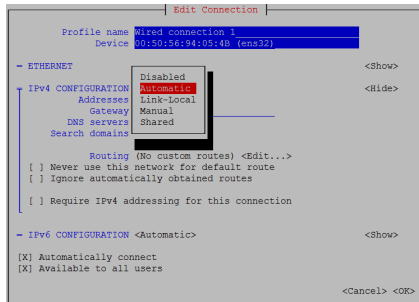
Note Do not modify the `docker0` connection.

- 5 Select the virtual connection, and then press **Enter**.

Figure 4: Example: Edit Connection screen



- 6 Optional: If the **IPv4 CONFIGURATION** area is not visible, select its display option (**<Show>**), and then press **Enter**.
- 7 In the **IPv4 CONFIGURATION** area, select **<Automatic>**, and then press **Enter**.

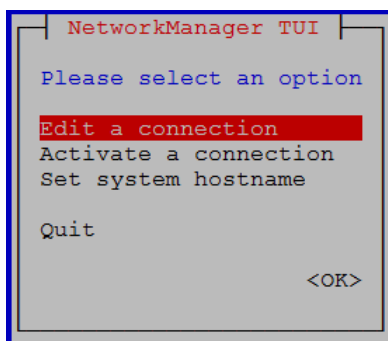
Figure 5: Example: IPv4 Configuration options

- 8 Configure static IPv4 networking as follows:
 - a Select **Manual**, and then press **Enter**.
 - b Select **<Add>** next to **Addresses**, and then press **Enter**.
 - c In the **Addresses** field, enter an IPv4 address for the virtual machine, and then press **Enter**.
 - d Repeat the preceding two steps for the **Gateway** and **DNS servers** fields.
- 9 Select **<OK>** at the bottom of the **Edit Connection** screen, and then press **Enter**.
- 10 On the **NetworkManager TUI** screen, use the **Tab** key to select the **<Quit>** option, and then press the **Return** key to go back to the **Appliance Administration** menu.
- 11 Reboot the operating system as follows:
 - a In the **Appliance Administration** menu, select **Reboot / Poweroff System**.
 - b Select **Reboot**.
 - c Select **OK**, and then press **Enter**.

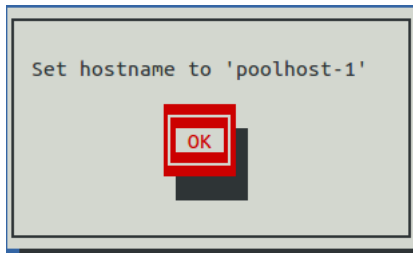
Set system hostname

The default hostname is `zsd-master` for the Resource Manager master host and is `zsd-delegate` for the Resource Manager delegate host. To change the default hostname, perform this procedure.

- 1 Gain access to the Control Center host, through the console interface of your hypervisor, or through a remote shell utility such as *PuTTY*.
- 2 Select the **NetworkManager TUI** menu as follows:
 - a In the **Appliance Administration** menu, select **Configure Network and DNS**, and then press **Enter**.



- 3 Display the hostname entry field.
 - a In the **NetworkManager TUI** menu, select **Set system hostname**.
 - b Press **Tab** to select **OK**, and then press **Enter**.
- 4 In the **Hostname** field, enter the hostname or a fully qualified domain name.
- 5 Press **Tab** twice to select **OK**, and then press **Enter**.



- 6 In the confirmation dialog box, press **Enter**.
- 7 Reboot the operating system as follows:
 - a In the **Appliance Administration** menu, select **Reboot / Poweroff System**.
 - b Select **Reboot**.
 - c Select **OK**, and then press **Enter**.

Adding the master host to a resource pool

This procedure adds the Control Center master host to the `default` resource pool, or to a new resource pool, named `master`.

- 1 Gain access to the Control Center host, through the console interface of your hypervisor, or through a remote shell utility such as *PuTTY*.
- 2 Start a command-line session as `root` as follows:
 - a In the **Appliance Administration** menu, select **Root Shell**.
 - b Select **Run**, and then press **Enter**.

The menu is replaced by a command prompt similar to the following example:

```
[root@hostname ~]#
```

- 3 Optional: Create a new resource pool, if necessary.
 - For single-host deployments, skip this step.
 - For multi-host deployments with at least two delegate hosts, perform this step.

```
serviced pool add master
```

- 4 Add the master host to a resource pool.
 - For single-host deployments, add the master host to the `default` resource pool.
 - For multi-host deployments with at least two delegate hosts, add the master host to the `master` resource pool.

Replace *Hostname-Or-IP* with the hostname or IP address of the Control Center master host, and replace *Resource-Pool* with `default` or `master`:

```
serviced host add Hostname-Or-IP:4979 Resource-Pool
```

If you enter a hostname, all hosts in your Control Center cluster must be able to resolve the name, either through an entry in `/etc/hosts`, or through a nameserver on your network.

Deploying Resource Manager

This procedure adds the Resource Manager application to the list of applications that Control Center manages.

- 1 Gain access to the Control Center host, through the console interface of your hypervisor, or through a remote shell utility such as *PuTTY*.
- 2 Start a command-line session as `root` as follows:
 - a In the **Appliance Administration** menu, select **Root Shell**.
 - b Select **Run**, and then press **Enter**.

The menu is replaced by a command prompt similar to the following example:

```
[root@hostname ~]#
```

- 3 Add the `Zenoss.resmgr` application to Control Center.

```
myPath=/opt/serviced/templates
serviced template add $myPath/zenoss-resmgr-*.json
```

On success, the `serviced` command returns the template ID.

- 4 Deploy the application.

Replace *Template-ID* with the template identifier returned in the previous step, and replace *Deployment-ID* with a name for this deployment (for example, `Dev` or `Test`):

```
serviced template deploy Template-ID default Deployment-ID
```

Control Center tags Resource Manager images in the local registry.

If you are installing a single-host deployment, proceed to the *Zenoss Resource Manager Configuration Guide*.

3

Installing delegate hosts

This chapter describes how to install appliance-based delegates. You can add as many delegates as you need to a Control Center cluster.

Creating a virtual machine

You can create a virtual machine for the Resource Manager delegate appliance with VMware vSphere.

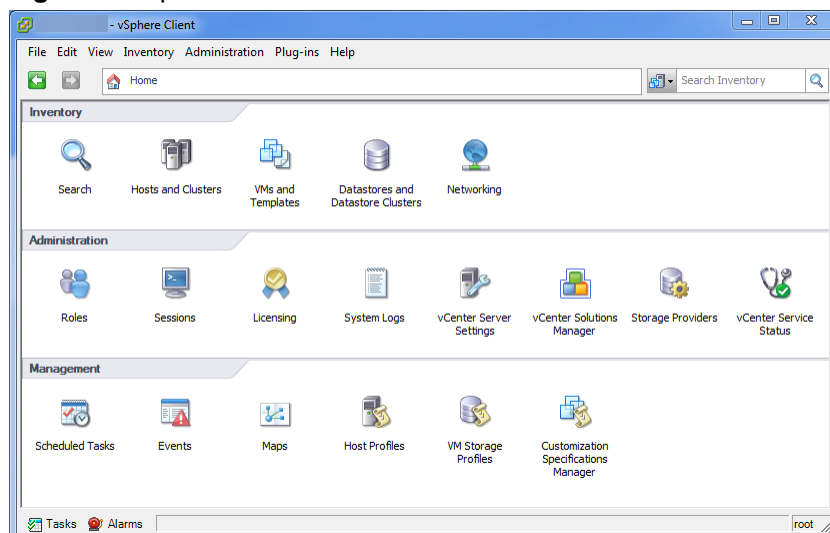
Creating a virtual machine with vSphere

To perform this task, you need a VMware vSphere client.

This procedure installs the Resource Manager delegate OVA package as a virtual machine managed by vSphere Server version 5.5.0, using VMware vSphere Client 5.5.0. The procedure is slightly different with different versions of VMware vSphere Client.

- 1 Download the Resource Manager delegate OVA file from the [Zenoss Support](#) site to your workstation, if necessary.
- 2 Use the VMware vSphere Client to log in to vCenter as `root`, or as a user with superuser privileges, and then display the **Home** view.

Figure 6: vSphere client Home view



- 3 From the **File** menu, select **Deploy OVF Template**.

- 4 In the **Source** panel, specify the path of the Resource Manager package, and then click **Next**.
- 5 In the **OVF Template Details** panel, click **Next**.
- 6 In the **Name and Location** panel, provide a name and a location for the server. as follows, and then click **Next**.
 - a In the **Name** field, enter a new name.
 - b In the **Inventory Location** area, select a data center for the virtual machine.
- 7 In the **Host / Cluster** panel, select a host system, and then click **Next**.
- 8 In the **Storage** panel, select a storage system with sufficient space for the virtual machine, and then click **Next**.
- 9 In the **Disk Format** panel, select **Thin Provison**, and then click **Next**.
- 10 In the **Ready to Complete** panel, review the deployment settings, and then click **Finish**.
Do not check **Power on after deployment**.
- 11 Navigate to the new virtual machine's **Getting Started** or **Summary** tab, and then click **Edit virtual machine settings**.
- 12 Update the memory assigned to the machine as follows:
 - a In the **Virtual Machine Properties** dialog box, select **Memory** in the **Hardware** table.
 - b In the **Memory Configuration** area, set the **Memory Size** field to 32GB.
 - c At the bottom of the **Virtual Machine Properties** dialog box, click **OK**.
- 13 On the new virtual machine's **Getting Started** tab, click **Power on virtual machine**.

Configuring the virtual machine mode

This procedure configures the new virtual machine as a delegate host.

- 1 Gain access to the console interface of the Control Center host through your hypervisor console interface.

Figure 7: Initial hypervisor console login prompt

```

Welcome to Zenoss Service Dynamics

After initial setup, the Control Center UI can be accessed by
browsing to:

https://zsd-delegate
(default username/password is ccuser/zsd)

Ensure that zsd-delegate is resolvable to 10.88.121.230, either through your
DNS system or through a HOSTS entry on the browser client. For more
information refer to the installation notes.

You can log in to this console to perform administrative tasks such
as setting up networking and safely rebooting this system. The
root password defaults to 'zsd'

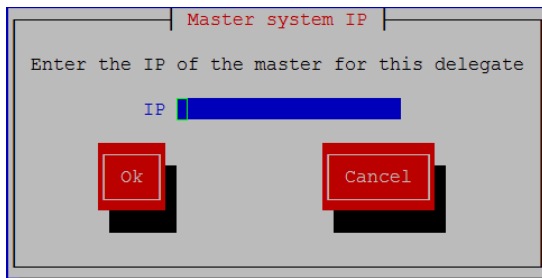
Linux Kernel 3.10.0-514.2.2.el7.x86_64 on an x86_64
zsd-delegate login: _

```

- 2 Log in as the `root` user.
The initial password is provided in the console.
- 3 The system prompts you to enter a new password for `root`.

Note Passwords must include a minimum of eight characters, with at least one character from three of the following character classes: uppercase letter, lowercase letter, digit, and special.

- 4 The system prompts you to enter a new password for `ccuser`.
The `ccuser` account is the default account for gaining access to the Control Center browser interface.
- 5 In the **IP** field, enter the hostname, fully qualified domain name, or IPv4 address of the master host.



Note If you enter the hostname or fully qualified domain name of the master host, you need an entry in the `/etc/hosts` file of the delegate host, or a nameserver on your network, that resolves the name to its IPv4 address.

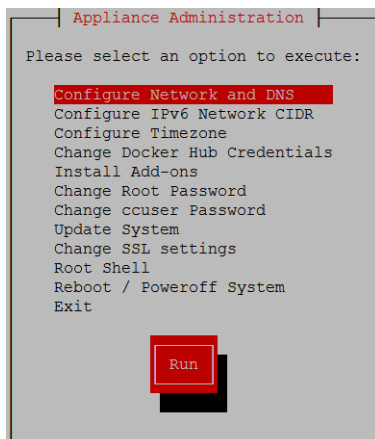
- a Press **Tab** to select **Ok**, and then press **Enter**.
The system reboots.

Edit a connection

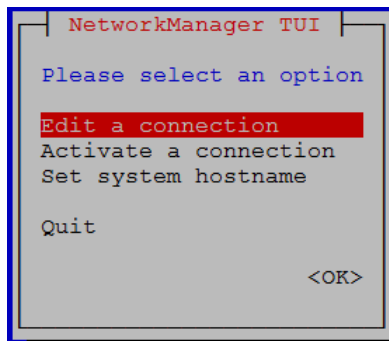
The default configuration for network connections is DHCP. To configure static IPv4 addressing, perform this procedure.

To navigate in the text user interface (TUI):

- To move forward or backward through options, press the arrow keys or press **Tab** or **Shift+Tab**.
 - To display a menu or choose an option, press **Enter**.
- 1 Gain access to the Control Center host, through the console interface of your hypervisor, or through a remote shell utility such as *PuTTY*.
 - 2 Log in as the `root` user.

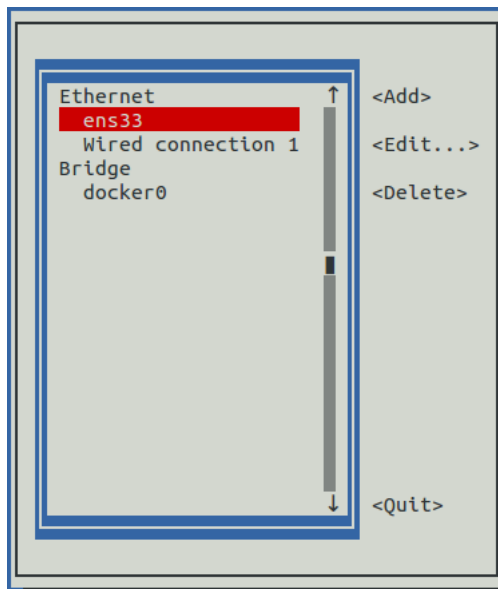


- 3 Select the **NetworkManager** TUI menu as follows:
 - a In the **Appliance Administration** menu, select **Configure Network and DNS**, and then press **Enter**.



- 4 On the **NetworkManager TUI** menu, select **Edit a connection**, and then press **Enter**. The TUI displays the connections that are available on this host.

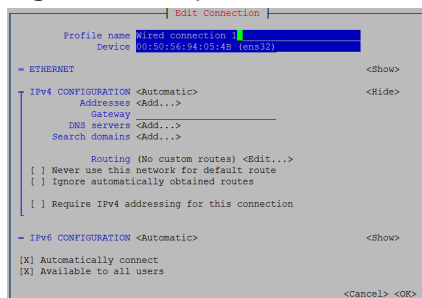
Figure 8: Example: Available connections



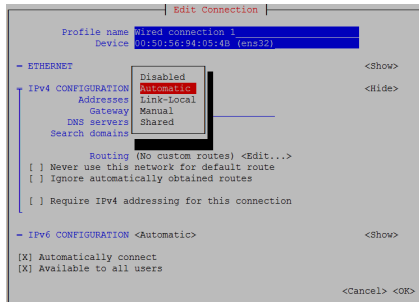
Note Do not modify the `docker0` connection.

- 5 Select the virtual connection, and then press **Enter**.

Figure 9: Example: Edit Connection screen



- 6 Optional: If the **IPv4 CONFIGURATION** area is not visible, select its display option (**<Show>**), and then press **Enter**.
- 7 In the **IPv4 CONFIGURATION** area, select **<Automatic>**, and then press **Enter**.

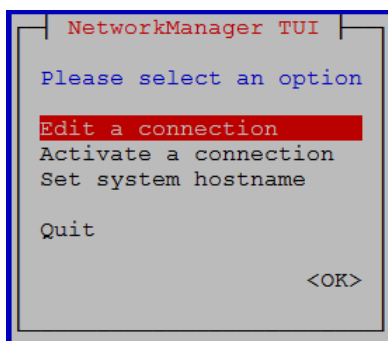
Figure 10: Example: IPv4 Configuration options

- 8 Configure static IPv4 networking as follows:
 - a Select **Manual**, and then press **Enter**.
 - b Select **<Add>** next to **Addresses**, and then press **Enter**.
 - c In the **Addresses** field, enter an IPv4 address for the virtual machine, and then press **Enter**.
 - d Repeat the preceding two steps for the **Gateway** and **DNS servers** fields.
- 9 Select **<OK>** at the bottom of the **Edit Connection** screen, and then press **Enter**.
- 10 On the **NetworkManager TUI** screen, use the **Tab** key to select the **<Quit>** option, and then press the **Return** key to go back to the **Appliance Administration** menu.
- 11 Reboot the operating system as follows:
 - a In the **Appliance Administration** menu, select **Reboot / Poweroff System**.
 - b Select **Reboot**.
 - c Select **OK**, and then press **Enter**.

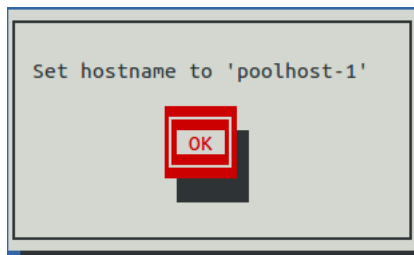
Set system hostname

The default hostname is `zsd-master` for the Resource Manager master host and is `zsd-delegate` for the Resource Manager delegate host. To change the default hostname, perform this procedure.

- 1 Gain access to the Control Center host, through the console interface of your hypervisor, or through a remote shell utility such as *PuTTY*.
- 2 Select the **NetworkManager TUI** menu as follows:
 - a In the **Appliance Administration** menu, select **Configure Network and DNS**, and then press **Enter**.



- 3 Display the hostname entry field.
 - a In the **NetworkManager TUI** menu, select **Set system hostname**.
 - b Press **Tab** to select **OK**, and then press **Enter**.
- 4 In the **Hostname** field, enter the hostname or a fully qualified domain name.
- 5 Press **Tab** twice to select **OK**, and then press **Enter**.



- 6 In the confirmation dialog box, press **Enter**.
- 7 Reboot the operating system as follows:
 - a In the **Appliance Administration** menu, select **Reboot / Poweroff System**.
 - b Select **Reboot**.
 - c Select **OK**, and then press **Enter**.

Editing the `/etc/hosts` file

This procedure is optional. Perform this procedure only if you use hostnames or fully-qualified domain names instead of IPv4 addresses, and only after all delegate hosts are installed and renamed. Perform this procedure on the Control Center master host and on each delegate host.

- 1 Gain access to the Control Center host, through the console interface of your hypervisor, or through a remote shell utility such as *PuTTY*.
- 2 Start a command-line session as `root` as follows:
 - a In the **Appliance Administration** menu, select **Root Shell**.
 - b Select **Run**, and then press **Enter**.

The menu is replaced by a command prompt similar to the following example:

```
[root@hostname ~]#
```

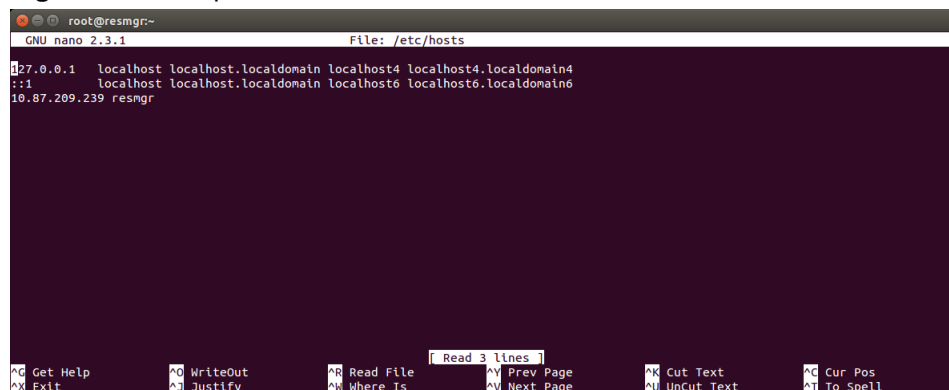
- 3 Open the `/etc/hosts` file in a text editor.

The following steps use the *nano* editor.

- a Start the editor.

```
nano /etc/hosts
```

Figure 11: Example nano session



Use the up-arrow and down-arrow keys to select lines, and the right-arrow and left-arrow keys to select characters on a line.

- b** Optional: On delegate hosts, the file might include two entries with the same the IP address. Remove the first of the two entries, which maps the IP address to the `zsd-master` hostname.
- c** Add entries for the Control Center master host and for each delegate host.
- d** Save the file and exit the editor.

To save, press **Control-o**. To exit, press **Control-x**.

- 4** Return to the **Appliance Administration** menu.

```
exit
```

- 5** Exit the **Appliance Administration** menu.

- a** Use the down-arrow key to select **Exit**.
- b** Press **Tab**, and then press **Enter**.

Configuring a multi-host Control Center cluster

4

This chapter describes how to configure an appliance-based multi-host Control Center cluster. A multi-host Resource Manager deployment includes one Control Center master host and one or more resource pool hosts. Zenoss recommends deploying at least two resource pool hosts, to enable creating a ZooKeeper ensemble.

Task	Procedure
Install a master host	Installing a Control Center master host on page 13
Install delegate hosts	Installing delegate hosts on page 20
Add resource pool hosts to the cluster	Adding hosts to the default resource pool on page 27
Add resource pool hosts to the cluster	Adding hosts to the default resource pool on page 27

Adding hosts to the default resource pool

This procedure adds one or more hosts to the default resource pool.

- 1 Gain access to the Control Center host, through the console interface of your hypervisor, or through a remote shell utility such as *PuTTY*.
- 2 Start a command-line session as `root` as follows:
 - a In the **Appliance Administration** menu, select **Root Shell**.
 - b Select **Run**, and then press **Enter**.

The menu is replaced by a command prompt similar to the following example:

```
[root@hostname ~]#
```

- 3 Add and register a delegate host.

Replace *Hostname-Or-IP* with the hostname or IP address of the delegate host to add and include the register flag to authenticate the delegate host:

```
serviced host add Hostname-Or-IP:4979 default --register
```

If you enter a hostname, all hosts in your Control Center cluster must be able to resolve the name through an entry in `/etc/hosts` or through a nameserver on your network.

- 4 Repeat the preceding command for each delegate in your Control Center cluster.

5

Configuring a ZooKeeper ensemble

This chapter describes how to create a ZooKeeper ensemble (cluster) for a multi-host Control Center deployment that includes a minimum of three hosts. If your deployment includes just one host or two hosts, skip this chapter.

ZooKeeper and Control Center

Control Center relies on *Apache ZooKeeper* to distribute and manage application services. ZooKeeper maintains the definitions of each service and the list of services assigned to each host. The scheduler, which runs on the master host, determines assignments and sends them to the ZooKeeper node that is serving as the ensemble leader. The leader replicates the assignments to the other ensemble nodes, so that the other nodes can assume the role of leader if the leader node fails.

All of the hosts in a Control Center cluster retrieve assignments and service definitions from the ZooKeeper ensemble leader and then start services in Docker containers as required. So, the Control Center configuration files of all Control Center cluster hosts must include a definition for the *SERVICED_ZK* variable, which specifies the ZooKeeper endpoints of the ensemble nodes. Additional variables are required on ensemble nodes.

A ZooKeeper ensemble requires a minimum of three nodes, which is sufficient for most environments. An odd number of nodes is recommended and an even number of nodes is strongly discouraged. A five-node ensemble improves failover protection during maintenance windows but larger ensembles yield no benefits.

The Control Center master host is always an ensemble node. All ensemble nodes should be on the same subnet.

Understanding the configuration process

The procedures in this chapter instruct you to create temporary variables that are used as building blocks, to construct Control Center configuration variables accurately. You append the Control Center variables to `/etc/default/serviced`, and then edit the file to move the variables to more appropriate locations.

The most important temporary variables specify the IP address or hostname of each host in the ZooKeeper ensemble. The following table identifies these important variables, the names and values of which must be identical on every Control Center cluster host.

Variable name	Placeholder value	Actual value
node1	<i>Master</i>	IP address or hostname of the master host
node2	<i>Delegate-A</i>	IP address or hostname of delegate host A

Variable name	Placeholder value	Actual value
node1	<i>Delegate-B</i>	IP address or hostname of delegate host B

Note All ensemble hosts should be on the same subnet.

ZooKeeper variables

The variables in the following table are set only on ZooKeeper ensemble nodes, except *SERVICED_ZK*, which must be identical on all Control Center cluster hosts.

Variable	Where to set
<i>SERVICED_ISVCS_START</i>	ZooKeeper ensemble nodes
<i>SERVICED_ISVCS_ZOOKEEPER_ID</i>	ZooKeeper ensemble nodes
<i>SERVICED_ISVCS_ZOOKEEPER_QUORUM</i>	ZooKeeper ensemble nodes
<i>SERVICED_ZK</i>	All Control Center cluster hosts
<i>SERVICED_ZK_SESSION_TIMEOUT</i>	ZooKeeper ensemble nodes

Example multi-host ZooKeeper configuration

This example shows the ZooKeeper variables in the `/etc/defaults/serviced` configuration file of each host in a 4-node Control Center cluster. For convenience, the relevant settings for each node or host are also included in subsequent procedures.

Note The value of the *SERVICED_ISVCS_ZOOKEEPER_QUORUM* variable is formatted to fit the available space. In the configuration file, the variable and value are on the same line.

Master host and ZooKeeper ensemble node, 198.51.100.135:

```
SERVICED_ISVCS_ZOOKEEPER_ID=1
SERVICED_ZK=198.51.100.135:2181,198.51.100.136:2181,198.51.100.137:2181
SERVICED_ISVCS_ZOOKEEPER_QUORUM=1@0.0.0.0:2888:3888,\
 2@198.51.100.136:2888:3888,3@198.51.100.137:2888:3888
SERVICED_ZK_SESSION_TIMEOUT=15
```

Delegate host and ZooKeeper ensemble node, 198.51.100.136:

```
SERVICED_ISVCS_START=zookeeper
SERVICED_ISVCS_ZOOKEEPER_ID=2
SERVICED_ZK=198.51.100.135:2181,198.51.100.136:2181,198.51.100.137:2181
SERVICED_ISVCS_ZOOKEEPER_QUORUM=1@198.51.100.135:2888:3888,\
 2@0.0.0.0:2888:3888,3@198.51.100.137:2888:3888
SERVICED_ZK_SESSION_TIMEOUT=15
```

Delegate host and ZooKeeper ensemble node, 198.51.100.137:

```
SERVICED_ISVCS_START=zookeeper
SERVICED_ISVCS_ZOOKEEPER_ID=3
SERVICED_ZK=198.51.100.135:2181,198.51.100.136:2181,198.51.100.137:2181
SERVICED_ISVCS_ZOOKEEPER_QUORUM=1@198.51.100.135:2888:3888,\
 2@198.51.100.136:2888:3888,3@0.0.0.0:2888:3888
```

```
SERVICED_ZK_SESSION_TIMEOUT=15
```

Delegate host, 198.51.100.138:

```
SERVICED_ZK=198.51.100.135:2181,198.51.100.136:2181,198.51.100.137:2181
```

Configuring the master host as a ZooKeeper node

This procedure configures the Control Center master host as a node in a ZooKeeper ensemble.

- 1 Log in to the master host as `root`, or as a user with superuser privileges.
- 2 Define the IP address variables for each node in the ZooKeeper ensemble.
Replace *Master* with the IP address or hostname of the Control Center master host, and replace *Delegate-A* and *Delegate-B* with the IP addresses or hostnames of the delegate hosts to include in the ensemble:

```
node1=Master
node2=Delegate-A
node3=Delegate-B
```

- 3 Set the ZooKeeper node ID to 1.

```
echo "SERVICED_ISVCS_ZOOKEEPER_ID=1" >> /etc/default/serviced
```

- 4 Specify the nodes in the ZooKeeper ensemble.
You can copy the following text and paste it in your console:

```
echo "SERVICED_ZK=${node1}:2181,${node2}:2181,${node3}:2181" \
>> /etc/default/serviced
```

- 5 Specify the nodes in the ZooKeeper quorum.

ZooKeeper requires a unique quorum definition for each node in its ensemble. To achieve this, replace the IP address or hostname of the master host with `0.0.0.0`.

You can copy the following text and paste it in your console:

```
q1="1@0.0.0.0:2888:3888"
q2="2@${node2}:2888:3888"
q3="3@${node3}:2888:3888"
echo "SERVICED_ISVCS_ZOOKEEPER_QUORUM=${q1},${q2},${q3}" \
>> /etc/default/serviced
```

- 6 Specify the timeout for inactive connections.
You can copy the following text and paste it in your console:

```
echo "SERVICED_ZK_SESSION_TIMEOUT=15" >> /etc/default/serviced
```

- 7 Clean up the Control Center configuration file.

- a Open `/etc/default/serviced` in a text editor.
- b Navigate to the end of the file, and cut the line that contains the `SERVICED_ZK` variable declaration at that location.
- c Locate the original `SERVICED_ZK` variable declaration, and then paste the cut line immediately below it.
- d Navigate to the end of the file, and cut the line that contains the `SERVICED_ISVCS_ZOOKEEPER_ID` variable declaration at that location.
- e Locate the original `SERVICED_ISVCS_ZOOKEEPER_ID` variable declaration, and then paste the cut line immediately below it.

- f Navigate to the end of the file, and cut the line that contains the `SERVICED_ISVCS_ZOOKEEPER_QUORUM` variable declaration at that location.
 - g Locate the original `SERVICED_ISVCS_ZOOKEEPER_QUORUM` variable declaration, and then paste the cut line immediately below it.
 - h Navigate to the end of the file, and cut the line that contains the `SERVICED_ZK_SESSION_TIMEOUT` variable declaration at that location.
 - i Locate the original `SERVICED_ZK_SESSION_TIMEOUT` variable declaration, and then paste the cut line immediately below it.
 - j Save the file, and then close the editor.
- 8 Verify the ZooKeeper environment variables.

```
grep -E '^\\b*SERVICED' /etc/default/serviced | grep -E '_Z(OO|K)'
```

The following example shows the environment variables for a master host with IP address 198.51.100.135.

Note The value of the `SERVICED_ISVCS_ZOOKEEPER_QUORUM` variable is formatted to fit the available space. The result of the `grep` command shows the variable and value on the same line.

```
SERVICED_ZK=198.51.100.135:2181,198.51.100.136:2181,198.51.100.137:2181
SERVICED_ISVCS_ZOOKEEPER_ID=1
SERVICED_ISVCS_ZOOKEEPER_QUORUM=1@0.0.0.0:2888:3888, \
    2@198.51.100.136:2888:3888,3@198.51.100.137:2888:3888
SERVICED_ZK_SESSION_TIMEOUT=15
```

Configuring delegate host A as a ZooKeeper node

Use this procedure to configure the delegate host designated as *Delegate-A* as a ZooKeeper node.

- 1 Log in to the delegate host as `root`, or as a user with superuser privileges.
- 2 Define the IP address variables for each node in the ZooKeeper ensemble.
Replace *Master* with the IP address or hostname of the Control Center master host, and replace *Delegate-A* and *Delegate-B* with the IP addresses or hostnames of the delegate hosts to include in the ensemble:

```
node1=Master
node2=Delegate-A
node3=Delegate-B
```

- 3 Set the ID of this node in the ZooKeeper ensemble.

```
echo "SERVICED_ISVCS_ZOOKEEPER_ID=2" >> /etc/default/serviced
```

- 4 Specify the nodes in the ZooKeeper ensemble.
You can copy the following text and paste it in your console:

```
echo "SERVICED_ZK=${node1}:2181,${node2}:2181,${node3}:2181" \
>> /etc/default/serviced
```

- 5 Specify the nodes in the ZooKeeper quorum.

ZooKeeper requires a unique quorum definition for each node in its ensemble. To achieve this, replace the IP address or hostname of delegate host A with `0.0.0.0`.

You can copy the following text and paste it in your console:

```
q1="1@${node1}:2888:3888"
q2="2@0.0.0.0:2888:3888"
```

```
q3="3@${node3}:2888:3888"
echo "SERVICED_ISVCS_ZOOKEEPER_QUORUM=${q1}, ${q2}, ${q3}" \
  >> /etc/default/serviced
```

6 Specify the timeout for inactive connections.

You can copy the following text and paste it in your console:

```
echo "SERVICED_ZK_SESSION_TIMEOUT=15" >> /etc/default/serviced
```

7 Set the `SERVICED_ISVCS_START` variable, and clean up the Control Center configuration file.

- a** Open `/etc/default/serviced` in a text editor.
 - b** Locate the line for the `SERVICED_ISVCS_START` variable, and then make a copy of the line, immediately below the original.
 - c** Remove the number sign character (`#`) from the beginning of the line.
 - d** Delete all but `zookeeper` from its list of values.
 - e** Navigate to the end of the file, and cut the line that contains the `SERVICED_ZK` variable declaration at that location.
 - f** Locate the original `SERVICED_ZK` variable declaration, and then paste the cut line immediately below it.
 - g** Comment the original `SERVICED_ZK` declaration, which references only the master host.
Insert the number sign character (`#`) immediately in front of the original `SERVICED_ZK` variable.
 - h** Navigate to the end of the file, and cut the line that contains the `SERVICED_ISVCS_ZOOKEEPER_ID` variable declaration at that location.
 - i** Locate the original `SERVICED_ISVCS_ZOOKEEPER_ID` variable declaration, and then paste the cut line immediately below it.
 - j** Navigate to the end of the file, and cut the line that contains the `SERVICED_ISVCS_ZOOKEEPER_QUORUM` variable declaration at that location.
 - k** Locate the original `SERVICED_ISVCS_ZOOKEEPER_QUORUM` variable declaration, and then paste the cut line immediately below it.
 - l** Navigate to the end of the file, and cut the line that contains the `SERVICED_ZK_SESSION_TIMEOUT` variable declaration at that location.
 - m** Locate the original `SERVICED_ZK_SESSION_TIMEOUT` variable declaration, and then paste the cut line immediately below it.
 - n** Save the file, and then close the editor.
- 8** Verify the ZooKeeper environment variables.

```
grep -E '^\\b*SERVICED' /etc/default/serviced \
  | grep -E '(CS_ZO|_ZK|CS_ST)'
```

The following example shows the environment variables for a delegate host with IP address 198.51.100.136.

Note The value of the `SERVICED_ISVCS_ZOOKEEPER_QUORUM` variable is formatted to fit the available space. The result of the `grep` command shows the variable and value on the same line.

```
SERVICED_ZK=198.51.100.135:2181,198.51.100.136:2181,198.51.100.137:2181
SERVICED_ISVCS_START=zookeeper
SERVICED_ISVCS_ZOOKEEPER_ID=2
SERVICED_ISVCS_ZOOKEEPER_QUORUM=1@198.51.100.135:2888:3888, \
  2@0.0.0.0:2888:3888,3@198.51.100.137:2888:3888
SERVICED_ZK_SESSION_TIMEOUT=15
```

Configuring delegate host B as a ZooKeeper node

Use this procedure to configure the delegate host designated as *Delegate-B* as a ZooKeeper node.

- 1 Log in to the delegate host as `root`, or as a user with superuser privileges.
- 2 Define the IP address variables for each node in the ZooKeeper ensemble.
Replace *Master* with the IP address or hostname of the Control Center master host, and replace *Delegate-A* and *Delegate-B* with the IP addresses or hostnames of the delegate hosts to include in the ensemble:

```
node1=Master
node2=Delegate-A
node3=Delegate-B
```

- 3 Set the ID of this node in the ZooKeeper ensemble.

```
echo "SERVICED_ISVCS_ZOOKEEPER_ID=3" >> /etc/default/serviced
```

- 4 Specify the nodes in the ZooKeeper ensemble.
You can copy the following text and paste it in your console:

```
echo "SERVICED_ZK=${node1}:2181,${node2}:2181,${node3}:2181" \
>> /etc/default/serviced
```

- 5 Specify the nodes in the ZooKeeper quorum.

ZooKeeper requires a unique quorum definition for each node in its ensemble. To achieve this, replace the IP address or hostname of delegate host B with `0.0.0.0`.

You can copy the following text and paste it in your console:

```
q1="1@${node1}:2888:3888"
q2="2@${node2}:2888:3888"
q3="3@0.0.0.0:2888:3888"
echo "SERVICED_ISVCS_ZOOKEEPER_QUORUM=${q1},${q2},${q3}" \
>> /etc/default/serviced
```

- 6 Specify the timeout for inactive connections.
You can copy the following text and paste it in your console:

```
echo "SERVICED_ZK_SESSION_TIMEOUT=15" >> /etc/default/serviced
```

- 7 Set the `SERVICED_ISVCS_START` variable, and clean up the Control Center configuration file.

- a Open `/etc/default/serviced` in a text editor.
- b Locate the line for the `SERVICED_ISVCS_START` variable, and then make a copy of the line, immediately below the original.
- c Remove the number sign character (`#`) from the beginning of the line.
- d Delete all but `zookeeper` from its list of values.
- e Navigate to the end of the file, and cut the line that contains the `SERVICED_ZK` variable declaration at that location.
- f Locate the original `SERVICED_ZK` variable declaration, and then paste the cut line immediately below it.
- g Comment the original `SERVICED_ZK` declaration, which references only the master host.
Insert the number sign character (`#`) immediately in front of the original `SERVICED_ZK` variable.
- h Navigate to the end of the file, and cut the line that contains the `SERVICED_ISVCS_ZOOKEEPER_ID` variable declaration at that location.
- i Locate the original `SERVICED_ISVCS_ZOOKEEPER_ID` variable declaration, and then paste the cut line immediately below it.
- j Navigate to the end of the file, and cut the line that contains the `SERVICED_ISVCS_ZOOKEEPER_QUORUM` variable declaration at that location.
- k Locate the original `SERVICED_ISVCS_ZOOKEEPER_QUORUM` variable declaration, and then paste the cut line immediately below it.

- l** Navigate to the end of the file, and cut the line that contains the `SERVICED_ZK_SESSION_TIMEOUT` variable declaration at that location.
 - m** Locate the original `SERVICED_ZK_SESSION_TIMEOUT` variable declaration, and then paste the cut line immediately below it.
 - n** Save the file, and then close the editor.
- 8** Verify the ZooKeeper environment variables.

```
grep -E '^\\b*SERVICED' /etc/default/serviced \
| grep -E '(CS_ZO|_ZK|CS_ST)'
```

The following example shows the environment variables for a delegate host with IP address 198.51.100.137.

Note The value of the `SERVICED_ISVCS_ZOOKEEPER_QUORUM` variable is formatted to fit the available space. The result of the `grep` command shows the variable and value on the same line.

```
SERVICED_ZK=198.51.100.135:2181,198.51.100.136:2181,198.51.100.137:2181
SERVICED_ISVCS_START=zookeeper
SERVICED_ISVCS_ZOOKEEPER_ID=3
SERVICED_ISVCS_ZOOKEEPER_QUORUM=1@198.51.100.135:2888:3888, \
2@198.51.100.136:2888:3888,3@0.0.0.0:2888:3888
SERVICED_ZK_SESSION_TIMEOUT=15
```

Installing the ZooKeeper image for Docker Engine

Use one of the procedures in this section to pull or import the Docker Engine image for the ZooKeeper service on each ZooKeeper ensemble node.

Pulling the ZooKeeper image for Docker Engine

To perform this procedure, ZooKeeper ensemble nodes must have internet access.

Use this procedure to pull the Docker Engine image for the ZooKeeper service from Docker Hub to a ZooKeeper ensemble node. Repeat this procedure on each node in the ZooKeeper ensemble.

- 1** Log in to the ZooKeeper ensemble node as `root`, or as a user with superuser privileges.
- 2** Identify the images associated with the installed version of `serviced`.

```
serviced version | grep Images
```

Example result:

```
IsvcsImages: [zenoss/serviced-isvcs:v54 zenoss/isvcs-zookeeper:v8]
```

In this example, the tag of the ZooKeeper image is `isvcs-zookeeper:v8`.

- 3** Pull the required image from Docker Hub to the local repository.
Replace `ZooKeeper-Tag` with the tag displayed in the previous step:

```
docker pull zenoss/ZooKeeper-Tag
```

Importing the ZooKeeper image for Docker Engine

Zenoss customers: Perform the steps in [Preparing to install without internet access](#) before performing this procedure.

Use this procedure to import the Docker Engine image for the ZooKeeper service from a ZooKeeper image file. Repeat this procedure on each node in the ZooKeeper ensemble.

- 1 Log in to the ZooKeeper ensemble node as `root`, or as a user with superuser privileges.
- 2 Change directory to `/root`.

```
cd /root
```

- 3 Extract the ZooKeeper image.

```
./install-zenoss-isvcs-zookeeper:v*.run
```

Image extraction begins when you press the `y` key.

- 4 Optional: Delete the archive file, if desired.

```
rm -i ./install-zenoss-isvcs-zookeeper:v*.run
```

Starting a ZooKeeper ensemble

Use this procedure to start a ZooKeeper ensemble.

This procedure uses the `nc` utility to query ensemble hosts. If `nc` is not available, you can use `telnet` with [interactive ZooKeeper commands](#).

The window of time for starting a ZooKeeper ensemble is relatively short. The goal of this procedure is to restart Control Center on each ensemble node at about the same time, so that each node can participate in electing the leader.

- 1 Log in to the Control Center master host as `root`, or as a user with superuser privileges.
- 2 In a separate window, log in to the second node of the ZooKeeper ensemble (*Delegate-A*) as `root`, or as a user with superuser privileges.
- 3 In a different window, log in to the third node of the ZooKeeper ensemble (*Delegate-B*) as `root`, or as a user with superuser privileges.
- 4 On all ensemble hosts, stop and start `serviced`.

```
systemctl stop serviced && systemctl start serviced
```

- 5 On the master host, check the status of the ZooKeeper ensemble.
 - a Attach to the container of the ZooKeeper service.

```
docker exec -it serviced-isvcs_zookeeper /bin/bash
```

- b Query the master host and identify its role in the ensemble.
Replace *Master* with the hostname or IP address of the master host:

```
{ echo stats; sleep 1; } | nc Master 2181 | grep Mode
```

The result includes `leader` or `follower`.

- c Query delegate host A and identify its role in the ensemble.
Replace *Delegate-A* with the hostname or IP address of delegate host A:

```
{ echo stats; sleep 1; } | nc Delegate-A 2181 | grep Mode
```

- d Query delegate host B and identify its role in the ensemble.

Replace *Delegate-B* with the hostname or IP address of delegate host B:

```
{ echo stats; sleep 1; } | nc Delegate-B 2181 | grep Mode
```

- e Detach from the container of the ZooKeeper service.

```
exit
```

If none of the hosts reports that it is the ensemble leader within a few minutes of starting `serviced`, reboot the hosts.

Updating delegate hosts

The default configuration of delegate hosts sets the value of the `SERVICED_ZK` variable to the master host only. Use this procedure to update the setting to include all of the hosts in the ZooKeeper ensemble. Perform this procedure on each delegate host in a Control Center cluster that is not an ensemble node.

- 1 Log in to the delegate host as `root`, or as a user with superuser privileges.
- 2 Define the IP address variables for each node in the ZooKeeper ensemble.
Replace *Master* with the IP address or hostname of the Control Center master host, and replace *Delegate-A* and *Delegate-B* with the IP addresses or hostnames of the delegate hosts to include in the ensemble:

```
node1=Master
node2=Delegate-A
node3=Delegate-B
```

- 3 Specify the nodes in the ZooKeeper ensemble.
You can copy the following text and paste it in your console:

```
echo "SERVICED_ZK=${node1}:2181,${node2}:2181,${node3}:2181" \
>> /etc/default/serviced
```

- 4 Update the variable.
 - a Open `/etc/default/serviced` in a text editor.
 - b Navigate to the end of the file, and cut the line that contains the `SERVICED_ZK` variable declaration at that location.
The value of this declaration specifies three endpoints.
 - c Locate the `SERVICED_ZK` variable near the beginning of the file, and then delete the line it is on.
The value is just the master host endpoint.
 - d Paste the `SERVICED_ZK` variable declaration from the end of the file in the location of the just-deleted declaration.
 - e Save the file, and then close the editor.
- 5 Verify the setting.

```
grep -E '^\b*SERVICED_ZK' /etc/default/serviced
```

The following example shows the environment variable for a delegate host that is not a node in the ZooKeeper ensemble:

```
SERVICED_ZK=198.51.100.135:2181,198.51.100.136:2181,198.51.100.137:2181
```

- 6 Restart Control Center.

```
systemctl restart serviced
```

Preparing to install without internet access

A

This appendix includes procedures for downloading and installing or staging Resource Manager software and its operating system dependencies.

Downloading Resource Manager image files

To perform this procedure, you need:

- A workstation with internet access.
- Permission to download files from the [File Portal - Download Zenoss Enterprise Software](#) site. Zenoss customers may request permission by filing a ticket at the [Zenoss Support](#) site.
- A secure network copy program.

Use this procedure to download the required files to a workstation and then copy the files to the Control Center master host.

Perform these steps:

- 1 In a web browser, navigate to the [File Portal - Download Zenoss Enterprise Software](#) site.
- 2 Log in with the account provided by Zenoss Support.
- 3 Download the self-installing Docker Engine image files for Resource Manager. Select the files with the highest version number. The version number is represented as *Version* in the following file names:

- `install-zenoss-hbase:vVersion.run`
- `install-zenoss-opentsdb:vVersion.run`
- `install-zenoss-resmgr_Version.run`

- 4 Download a RHEL/CentOS repository mirror file.

The download site provides a repository mirror file each supported release of RHEL/CentOS. Each file contains the Resource Manager application template and other packages.

To download the correct repository mirror file, match the operating system release number in the file name (`centos7.1` or `centos7.2`) with the version of RHEL/CentOS installed on all of the hosts in your Control Center cluster. Also, choose the file with the highest version number. The version number is represented as *Version* in the following file names:

- `yum-mirror-centos7.centos7.1-Version.x86_64.rpm`
- `yum-mirror-centos7.centos7.2-Version.x86_64.rpm`

- 5 Use a secure copy program to copy the files to the Control Center master host.

Installing the repository mirror

Use this procedure to install a local RHEL/CentOS repository mirror on the Control Center master host. The mirror contains the Control Center package.

- 1 Log in to the target host as `root`, or as a user with superuser privileges.
- 2 Copy or move the RPM file to `/tmp`.
- 3 Install the RHEL/CentOS repository mirror.

```
yum install -y /tmp/yum-mirror-*.x86_64.rpm
```

- 4 Optional: Delete the RPM file, if desired.

```
rm /tmp/yum-mirror-*.x86_64.rpm
```

Staging Docker image archive files

Before performing this procedure, verify that approximately 640MB of temporary space is available on the file system where `/root` is located.

Use this procedure to add Docker image archive files to the Control Center master host. The files are used when Docker is fully configured.

- 1 Log in to the master host as `root`, or as a user with superuser privileges.
- 2 Copy or move the archive files to `/root`.
- 3 Add execute permission to the files.

```
chmod +x /root/*.run
```