

# ZERMATT INSIDE

April 2024, 22nd Year, No. 2



Municipality of Zermatt, Citizens' Community of Zermatt, Zermatt Tourism, Zermatt Bergbahnen AG, Gornergrat Railway/Matterhorn Gotthard Railway

Municipality of Zermatt

**New phone numbers**

From April 8, 2024, new telephone numbers will be activated at the municipality.

Page 4

Zermatt Citizens' Community

**wood storage**

Privately owned timber stored on Burgerboden for a longer period must be collected by the end of June. Otherwise, it will be removed by the Forestry Office.

Page 18

Zermatt Tourism

**Summer guest**

Loyal winter guests should actively take advantage of the offers during the Summer months attentive be made.

Page 21

Gornergrat Railway

**Summer offers**

In its 126th year of operation, the Gornergrat Railway once again offers a wide range of special rides and experiences.

Page 24/25

Zermatt cable cars

**Final spurt**

The final work on the valley station. The new offices of the administration will be available from April.

Page 28



Municipality of Zermatt

## Welcome to the Niww Walka

For 2.5 months, the schoolchildren of grades 4H – 8H have been “living” with their teachers at Niww Walka. The classrooms have been furnished, the last specialist rooms, the library, the gymnasium, the multi-purpose rooms and the cafeteria have been completed.

Learn more on pages 2 and 3.



Classes are continuing as usual. The maintenance team has settled in and is busy working. The inauguration will take place on April 12, 2024, and on April 13, 2024, the Niww Walka will open its doors to the public on "Open Day."

**Start of school in the Niww Walka** On 22 January 2024, the students explored Students and their teachers visited the new school building and were amazed Bad. Where is my classroom? Which stairwell do I use? Where do music lessons take place? Where are the technical and textile design rooms?

What time can I enter the school building in the morning? Where are the office and the school Management? When will the library open? Questions upon questions that have since vanished into thin air. The children are in good spirits, and the new atmosphere is palpable . The wonder and discovery continues, especially since an ibex occasionally visits the west side above the playground. The spacious rooms, the larger classroom, the new blackboard (screen), the practical furniture, the individually and carefully furnished learning spaces, the wood and also the large windows or transparent doors, combined with the larch wood, catch the eye of students and visitors alike. The rooms "do" something to the people in

the Niww Walka – there is a contented and relaxed atmosphere that motivates learning .

**The library – a special gem**  
The newly redesigned school library is a real eye-catcher! It now offers generous space, as required by Swiss school library guidelines. Various activities can be carried out. Here are some highlights:

- Reading promotion and fun games: The library team regularly organizes playful reading activities for the children. They are motivated to read in an entertaining way. The students and pupils from Täsch and Randa as well as kindergarten children from Zermatt benefit from this offer.
- Attractive presentation of the media stands: The library was designed to ensure that the media collection can be attractively presented. Furthermore, the library rooms can be used by the

**mobile shelves can be flexibly adapted.**  
• Multifunctional space: The school library The library can be used in a variety of ways— as a space for books and other media, as a classroom, for events or exhibitions. Independent study, either individually or in groups, is also possible.

• Attractiveness of the school: The school library contributes to the attractiveness of the school. It is not only a place for learning but also a **popular meeting place for students** .

In 2023, a total of 6,261 students visited the (old) school library, which was then housed in temporary accommodation. With a professional school library concept, the new library will continue to be a place

of knowledge, encounters, and deceleration . It contributes to diversity and integration and plays an active role in everyday school life.

It's up-to-date, and the service is friendly, straightforward , and competent. The schoolchildren's enthusiasm for visiting the library is evident in their continued fascination with books.

- Inauguration and open day**  
The first part of the Niww Walka will be inaugurated at 2:00 PM on Friday, April 12, 2024. The ceremony will include speeches, performances , and the blessing of the new building.
- State Councillor Christophe Darbellay, **Head of the Department of Economic Affairs** and Education
  - Mark Aufdenblatten, President of the Construction Committee and Head of Real Estate and Works
  - Sonja Sarbach-Schalbetter, Head of Department of Education and Social Affairs
  - Daniel Iseli, GWJ Architects AG
  - Consecration of the new building by Pastor Konrad Rieder
  - Performances by students
- Possibility of viewing

On **Saturday, April 13, 2024, starting at 1:00 p.m.**, young and old are invited to **tour the new school building. There will be performances** by the schoolchildren, and the classrooms, specialist rooms , and specialized rooms can be viewed. **Guided tours will be offered, and food and drinks** will be provided. Let's celebrate **the opening of Niww Walka together!**



The students think:

The library is super cool! – Great that the library is now so big! – It is brilliant that we can now also play games to borrow! – When will the next competition?



**Kira**  
«I am happy here. Everything is bigger and the break area is good. The many glass doors I like it. The toilets have hot water.



«It is nice, well-equipped and modern. The entrance area is great.»



"I now have a shorter route to school. I like the two break areas. In the classroom there is plenty of space, a larger blackboard and through the glass door in the room you can see through it."



"The school building has a cool, modern look. The library invites you to be and is cozy."



"It's big, I like the beautiful wood, the round lamps and the large rooms. We have more space and have decorated the classroom. I can remember better."

concentrate and learn better."

### Did you know, ...

- that the renovation of the school buildings was already examined in June 2008.
- that in January 2016 a competition was launched with a double gymnasium, auditorium, 24 classrooms, and a daycare center with an estimated volume of 33,111.5 m3 .
- that in July 2016, 120 contributions were registered by various teams of architects and 79 contributions were ultimately submitted.
- that the judging of the competition entries took place in August 2016 and the winning project "Tabula Rasa" by the architectural team GWJ Bern was subsequently presented.
- that in September 2017, a renovation and extension as well as a new building of the OS in Täsch was examined.
- that in October 2018 the project was re-dimensioned (no auditorium and double gymnasium).
- that in August 2019 the population approved the commitment loan with 79%.
- that the building permit arrived in September 2020.
- that in February 2021 the 1st cycle moved to the temporary location in Obere Matten.
- that the demolition work began in April 2021.
- that the foundation stone was laid in April 2022.
- that 235 schoolchildren and 38 teachers moved in in January 2024.
- that the following rooms are available:
  - gym
  - 10 specialist rooms (DIF and PSH)
  - 12 classrooms (4H – 8H)
  - 2 multifunctional rooms
  - School library
  - Stage for small events
  - 1 religious and specialist room
  - 1 cafeteria
- that the dominant materials are flat wood, concrete and glass.
- that a total of 3,650 m3 of concrete will be used and that the removal will amount to 16,470 m3 .
- that the planning perimeter covers 5,795 m2 .
- that energy production is guaranteed by 47 geothermal probes and a photovoltaic system.
- that the entrances and paths in the building are designed to be barrier-free.
- that current fire protection and earthquake safety regulations are met.
- that the final construction phase will begin in April 2024.
- that a KITA, six kindergartens and the 3H classes are taught in Niww Walka 3.
- that a planning team has been working for seven years to realize the Niww Walka.
- that 74 meetings of the building committee alone have now taken place.
- that there is a lot of joy and enthusiasm.



Municipality of Zermatt

# Revision of local planning: further content-related in-depth analysis

The municipality of Zermatt (EWG) is revising its local planning for the entire municipal area.

A public consultation on this topic took place in October

2022. Based on feedback from the public and municipal considerations, further detailed planning is now being developed for the Furi/Aroleit and Howete areas. Therefore, the planning zones adopted by the municipal council in 2019 are to be extended for another three years.

The EWG conducted the participation process for the local planning revision in October 2022. The subject of the participation was the plan with the proposed zoning changes, the basic principles of the changes to the building and zoning regulations, and the development concept. A total of 128 different applications were received from the public, and separate consultation hours were held with 45 landowners in 2023 to discuss the applications.

### Generally positive response to the proposal

The proposed substantive adjustments were generally viewed positively by the public. There was little or no feedback on the proposed changes to the land use plan in the "Bodmen," "Windegga," and "Findeln" areas.

However, there were various reservations regarding the proposed adjustments in the "Furi/Aroleit" and "Howete" areas . This also applies to the proposed reserve zones in the village of Zermatt. Therefore, alternative planning solutions are being sought here, or rezoning into a reserve zone is being abandoned.

### Furi/Aroleit and Howete – Study commission for in-depth study

The EWG is using the feedback received on the planning adjustments in the "Furi/Aroleit" and "Howete" areas as an opportunity to conduct an in-depth study on further development in these areas . The increasingly severe shortage of primary residences will also be taken into account in the assessment.

In the "Furi" area, the current building zone is homogeneous and characterized by cable car and tourism infrastructure. Despite the limited access and distance from the village center, a certain amount of construction activity has been observed over the past few years. As part of a study contract, various teams are investigating how to ensure continued high-quality residential development in "Furi." These considerations will also include the extent to which further development in "Aroleit" can take place.

The "Howete" area is located away from the main settlement area and currently has no year-round access. It is a sensitive area in terms of landscape and townscape, visible from the village. Therefore, a study will examine how positive added value can be created through coordinated planning regarding development, building structure, and open spaces . It is planned to involve the landowners in the considerations.

Contact person at the EEC  
Stefanie Lauber, Head of Construction  
Department 027 966 22 53, stefanie.lauber@zermatt.net

«With the study commissions in the Furi/Aroleit areas and Howete we would like to show the population more specifically how these areas can develop qualitatively.»

Emanuel Julien, municipal councilor

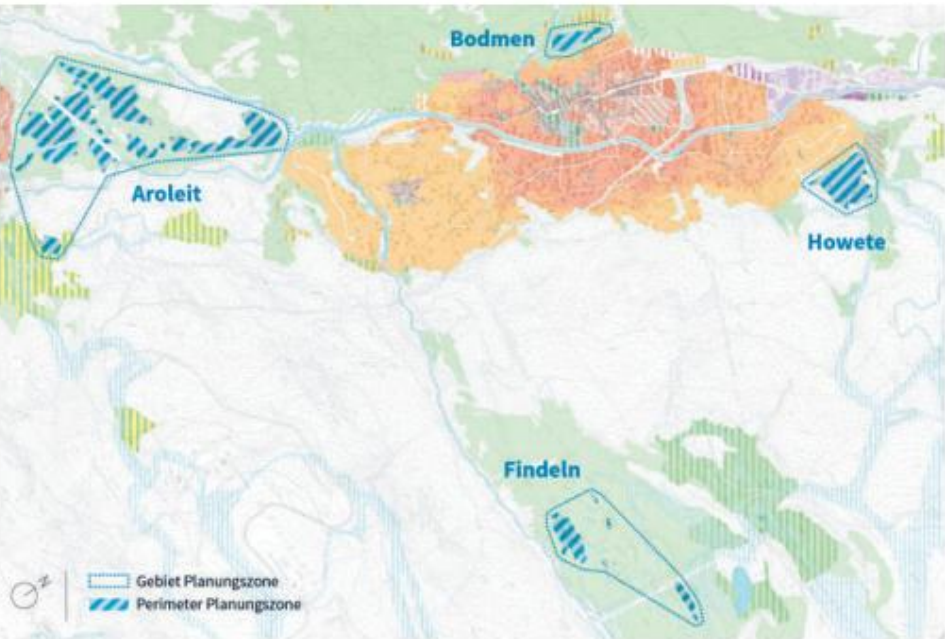
The results of the two study commissions are expected to be available by the end of 2024 and will be appropriately incorporated into the revision of the local planning.

### Continue planning zones for 3 years

In preparation for the revision of Zermatt's town plan, the municipal council established planning zones in "Aroleit," "Findeln," "Bodmen," and "Howete" in 2019. The following criteria were considered in determining the planning zones: location in relation to the main settlement area, existing infrastructure and development requirements, and the impact of development on the townscape and landscape.

In planning zones, nothing may be undertaken that could compromise the local planning revision. This means that nothing may be built in planning zones that contradicts the objectives and content of the new local planning . Planning zones according to Art. 19 of the KRPG can be designated by the municipal council for a period of five years.

The deadline may be extended by three years by the general meeting . The revision of Zermatt's town planning is well advanced, but the work is not yet complete. Furthermore, as part of the two study contracts, a



In-depth analysis of the areas covered by planning zones "Aroleit" and "Ho-wete" is to be demonstrated. In the areas "Findeln" and "Bodmen", further

The planning procedure has already been shown, but has not yet been bindingly determined for landowners. Therefore, the Zermatt Municipal Council requests that the electorate approve the extension of the planning zones for a further three years at the vote convened on April 28, 2024 .

### Preliminary examination dossier from the beginning of 2025 at the canton

The drafts of the zoning plan and the building and zoning regulations are to be submitted to the State Council for preliminary review in early 2025. This preliminary review is an essential step in finalizing the local planning revision. The comments and proposals from the preliminary review will be reviewed by the municipality of Zermatt, and the drafts will be adjusted where appropriate and reasonable . The drafts will then be presented to the public in a public consultation process and finally submitted to the general assembly for discussion and approval.



Municipality of Zermatt

# Adjustment of telephone numbers at the municipality from 8 April 2024

The telephone system used by the local authority (EWG) has reached the end of its service life and is being replaced. To improve customer service efficiency, the telephone numbers of the individual departments will be divided into new blocks. However, the main telephone number for the EWG (027 966 22 11) will remain unchanged.

Our employees' direct phone numbers have also been adjusted and can be requested from the relevant department if necessary . The new phone numbers will take effect on Monday, April 8, 2024 .

### Restrictions during the transition

On the day of the changeover, Monday, April 8, 2024, EWG will have limited telephone availability. We ask for your understanding if any inconvenience occurs during the telephone number change on that day.

Adapted Phone numbers	Old phone number	New telephone number from April 8, 2024
Resident Services / Office	027 966 22 11	+41 27 966 22 10
Lost and Found	027 966 22 05	+41 27 966 22 33
Community Library	027 966 22 38	+41 27 966 22 88
Computer science	027 966 22 69	+41 27 966 22 70
Public safety	027 966 22 05	+41 27 966 22 00
Registrar's Office	027 966 22 73	+41 27 966 22 35
Civil engineering	027 966 22 50	+41 27 966 22 60
Administrative management	027 966 22 67	+41 27 966 22 90
Water supply	-	+41 27 966 85 00

Unchanged phone numbers	Telephone number
Wastewater treatment plant (WWTP)	027 967 41 75
ARA, on-call	027 967 55 44
AHV branch	027 966 22 48
Construction Department	027 966 22 50
Education	027 966 46 20
Electric bus operation	027 967 45 68
EEC, main number	027 966 22 11
Finance Department	027 966 22 45
Public Spaces Coordinator	079 214 00 24
Regional Police	027 966 22 22
School, sports and leisure facilities	027 967 62 64 / 079 641 48 56
Protection and rescue	027 966 22 08 / 079 777 74 90
Tax Department	027 966 22 40
Technical Services	027 966 22 80
Technical services, on-call	079 798 44 25
Technical Services, Spiss Workshop	027 967 11 42
Water supply on call (24h)	079 409 26 61
Zermatt Waste Disposal	027 955 20 80





Municipality of Zermatt

## Something special should be created in the Grüebe

The Spiss district forms the gateway to Zermatt. However, its appearance doesn't match our usual postcard view.

The numerous supply and disposal facilities, **goods handling facilities, storage areas, and over 2,700 parking spaces** are spread across many areas, some of which are located in **the open air. This leads to inefficient processes**, a lot of dust, and a townscape that Zermatt is unworthy. With the "Spiss Neighborhood Plan," the municipality of Zermatt (EWG) has already **created a planning basis to make the area more attractive. According to the neighborhood plan, open transshipment points** are technically prohibited. However, due to a lack of alternatives, they have been tolerated so far.

A service center for road, rail and air transport

The Grüebe area is home to the largest undeveloped land reserve in the Spiss region. Ideas for coordinated freight handling were already being developed in 2013. Now, in collaboration with other stakeholders, EWG is presenting the feasibility study for the Grüebe Service Center (DLZ). This innovative concept combines freight handling by **road, rail, and air with storage space** and other uses in a single building.

In the DLZ, rail, road, and air freight could be transshipped at the same location. This would lead to more efficient use of space, better coordination of processes, and the bundling of trips. Instead of many vehicles driving half-loaded into the village, the various goods could be consolidated into a few vehicles. This would reduce the number of trips.

With the DLZ, the open freight transfer at Spiss can be completely eliminated. Loading, storage, and thus the supply of Zermatt would be handled **highly efficiently and with the latest logistics technology**. Although the DLZ will require a certain

However, while the aim is to concentrate freight handling, **there will be no general obligation to use** the DLZ for all freight handling operations. Access to road and rail transport is a central aspect of the usage concept.

Where is the planning?

The conception of the DLZ Grüebe is still in its early stages, which is why EWG has taken the lead in planning. In 2023, EWG, together with

The Canton of Valais commissioned Rapp AG to prepare a feasibility study for the DLZ Grüebe.

As part of the feasibility study, the Rapp AG team has intensively addressed the topics of

The operational concept, development, possible phasing, maximum building size including building layout and investment costs were discussed.

The feasibility study clearly demonstrates that goods handling can be centralized in the DLZ and thus **goods distribution can be organized efficiently**.

In addition to the building concept, the operational organization with its many participants represents a major challenge. The focus is on a private **operating company with various stakeholders**.

The feasibility study also explored the building volume that would be compatible with the site and how the logistics building would need to be arranged. The work revealed that a maximum **usable area of approximately 43,000 m²** would be feasible.

This includes areas for transshipment facilities, **storage areas, a secondary use, and other commercial space**. **Parking** is possible in the basement, and the roof will house the Air Zermatt flight base, possibly starting in 2035.

What costs can be expected?

The feasibility study showed that the realisation of the DLZ with a complete expansion would require investment costs of around CHF 120 million.

(+/- 25%) **would be expected. The canton and federal government will** also be able to contribute, particularly for the railway sector. What such a model might look like in concrete terms is the subject of further work.

Phasing and development

The building is served by two primary modes of transport: rail (MGBahn) and road (freight and passenger transport). Delivery vehicles drive directly into the building and also turn around inside. In its final state, the building can be accessed from the Air

Zermatt (roof use for landing areas including hangar and administration).

The feasibility study also demonstrated that the DLZ can be built in stages. This would allow construction of the building to begin immediately, even if the railway connection cannot yet be realized. The railway connection will only be possible after the completion of the Mattertal Railway Tunnel – in 2035 at the earliest.

In a first phase, the basement with storage and parking spaces as well as a ramp loading area on the ground floor would be built. The basement would be connected to the existing U. Imboden AG building. In a second phase, the railway connection and the general cargo hub (ground floor to

1st floor). In the final phase, the 2nd floor and the roof with the airbase would be realized. This phasing is to be understood as a possible proposal; other variants are also possible. This is an important finding, because depending on how and which landowners participate in the project, the phasing could be designed differently.

Involvement of various actors

During the development of the feasibility study, various stakeholders were specifically surveyed about the DLZ. In addition, two workshops were held to discuss possible solutions and further develop the project. This resulted in a feasibility study that provides a broad

The project was supported by Zermatt's logistics and catering companies, the retail trade, the trade association, the post office, the Zermatt Hoteliers Association, and the major landowners. All participants agreed that the opportunities for increased cooperation should be seized.

What is the DLZ Grüebe not?

The DLZ is planned as Zermatt's logistics hub for goods. Although parking is planned, no passenger transfer terminal is planned. Guests will only travel by car to Täsch and transfer there to the train. The Matterhorn Gotthard Bahn (MGBahn) will continue as usual to Zermatt station, where passengers board and disembark. The transfer of goods from the train to the DLZ will not affect passenger operations.

During the discussions on the multiple uses, the housing shortage, particularly for staff housing, was frequently brought up in the workshops. The idea of also creating apartments in the DLZ so that **operations can be cross-financed sounds interesting at first glance. A closer look reveals that** apartments are not ideal as a multiple use. Vibrations and noise during loading of goods would severely impair the quality of life. Apartments in the same building or in the immediate vicinity are not feasible due to noise protection reasons.

Further action

The results of the feasibility study are a first step in the planning and implementation of the DLZ. Further development will continue under the leadership of the EWG. The proposed solutions will now be discussed with various stakeholders, and their needs will be **specifically incorporated into the development of a preliminary project**. The landowners will be involved in the process through a planning agreement. The actual implementation will then be the responsibility of the private sector in the later planning phases.

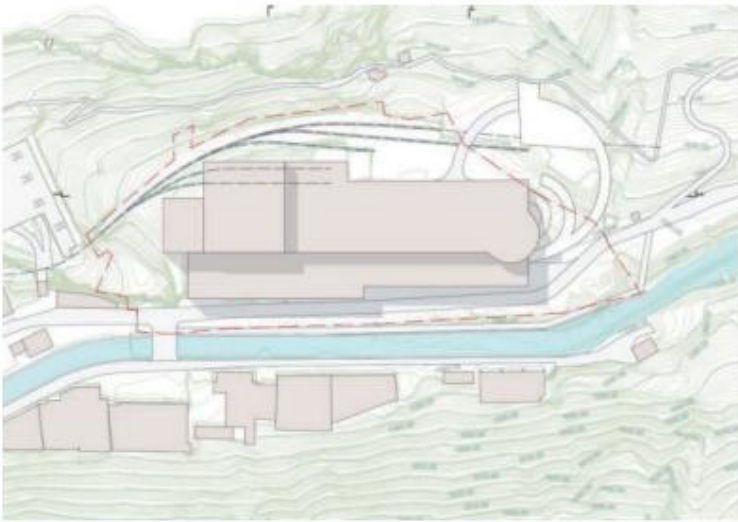
Numerous planning steps still need to be completed before the project can be realized. However, the starting signal has now been given. The EWG intends to move forward quickly. A first stage for loading from road to rail is expected to be completed as early as 2028. Full operation with rail loading and the potential new Air Zermatt terminal will only **be possible with the opening of the new railway tunnel in 2035**.

«The DLZ Grüebe creates

an innovative logistics hub,

which is unparalleled in Switzerland."

André König, Transport Delegate Zermatt



The images from Rapp AG show the Grüebe airport at full capacity (without Air Zermatt). the circular street on the right side of the building the roof opened up: On the roof Air Zermatt's flight base could be built. At the same time, this access also serves as a rescue tunnel for the new Mattertal Tunnel of the Train.



Show



wir bauen - wir renovieren - wir planen

Zermatt

Imbodenstrasse 18

3910 Zermatt

027 966 20 24

Täsch

Imbodenstrasse 111

3910 Täsch

027 966 20 24

Visp

Imbodenstrasse 28

3910 Visp

027 966 20 24

Unser Trumpf? Kompetenz vor Ort!

Mehr Infos finden Sie auf unserer Webseite:  
[www.imboden-elektro.ch](http://www.imboden-elektro.ch)

ENGEL&VÖLKERS

Summer happiness:  
Sunny times for  
the  
marketing  
your property

ZERM AT T  
T +41 (0)27 966 06 76  
[engelvoelkers.com/zermatt](http://engelvoelkers.com/zermatt)



IMBODEN ROLAND AG

Plumbing & Heating

Photo:



Spissstrasse 1 - 3920 Zermatt – [roland.siam@bluewin.ch](mailto:roland.siam@bluewin.ch)

PERREN  
HAUSTECHNIK AG

Phone: 027 967 20 24



For 90 years your partner for  
**Oil firing & heating service**

Perren Haustechnik AG | Sunneggastrasse 5 | 3920 Zermatt | [www.perren-haustechnik.ch](http://www.perren-haustechnik.ch)



Municipality of Zermatt

# Hiking on historic paths – The municipality is restoring its cultural heritage

It is the highest Alpine crossing that the Walsers chose in the 13th century when they were driven from their homeland: the Theodul Pass.

**Beginnings and expansion**  
The paved mule tracks that still exist today , leading from Zermatt via Furi, Schwarzsee, and Trockener Steg to the pass, date back to this time. The Walser people built the path to move over the pass and settle the Valle d'Ayas and the Gressonay Valley. The mild climate in the High Middle Ages favored this project and made the passage more accessible. During the Little Ice Age from the 16th to the 19th century, the path became very dangerous. The death registers, which have been kept in the Zermatt parish since 1555, bear witness to this with a list of fatal accidents.

Since then, the route from Zermatt to the crossing over the pass has changed repeatedly and adapted to the changes brought about by the landscape and also by people.

**Trade route and smugglers' path**  
The Theodul Pass has likely been used since the 5th century BC and has always served as a link between the Matter Valley and the Valle d'Aosta, between Switzerland and Italy. Over time, a lively regional trade developed between the two valleys. Livestock was primarily exported to Italy , driven along the paved paths lined with dry-stone walls toward the pass. Conversely, the Valais region's main import was Italian wine.

The goods transported adapted to the spirit of the times. For example, the old mule track served as a passage for English contraband when Napoleon imposed an economic blockade on the United Kingdom in 1806. In the mid-19th century, traditional mule traffic over the Theodul Pass ended and was immediately replaced by the slowly developing tourism industry .

**cultural landscape**  
A diverse and structurally rich cultural landscape developed along this trade route . The area was used as pastureland, but also as a mineral mining area. Thus, from Roman times until the High Middle Ages, Furi was known as

Production site for soapstone pots. Later, grain fields were laid out on terraces (e.g. in Blatten). Numerous stone piles, terracing, irrigation systems, pasture boundaries, and, of course, the residential and farm buildings in

the hamlets and along the path bear witness to its varied history.

**Renovation and repair**  
The years of trade and tourism have left their mark on the path. Many of the paving stones installed by the Walser people are falling out of the route. The dry stone walls that once supported the mountain are decaying. The municipality of Zermatt wants this

preserve and secure nationally significant and exceptionally valuable cultural assets for future generations in the long term. To this end, it has commissioned a renovation concept that identifies the need for action along the entire route from Zermatt to the Italian border.

The first phase will involve the renovation of the heavily frequented section of the path from Blatten to Furi, which is in dire need of renovation. It is of great importance for both local recreation and tourism . The renovation work to preserve the historic structure of the path and its accompanying historical monuments amounts to approximately CHF 1.3 million and is scheduled to begin in summer 2024.

The trail is listed in the Swiss Inventory of Historic Transportation Routes (IVS) with the classification "national importance." Accordingly, significant financial support from the federal government, the canton, and third parties (Swiss Landscape Fund FLS) can be expected (applications are currently being processed).

Sources  
Federal Roads Office FEDRO: "Route VS 26," in: Inventory of Historic Transport Routes in Switzerland (IVS), as of November 2001. Online: Microsoft Word – VS00260000.rtf (admin.ch), accessed on March 12, 2024.  
  
Klaus Aerni: "Theodul Pass," in: Historical Dictionary of Switzerland (HLS), version dated May 1, 2012. Online: https://hls-dhs-dss.ch/de/articles/006805/2012-05-01/, accessed March 12, 2024.



Situation in autumn 2023:  
Due to their age, the dry stone walls are in poor condition, heavily overgrown and slowly decaying.

Situation autumn 2023:  
heavily overgrown path with crumbling dry stone walls



Mule transport port towards Theodul Pass.  
(Albert Emonet, Médiathèque Va-lais – Martigny)

Municipality of Zermatt

# E-bus operation – timetable change as of April 15, 2024

The electric buses on the green line (mountain railways) and the red line (Winkelmatten) operate according to the current summer and winter timetables, respectively. The respective timetable changes generally take place on May 1 and mid-December. December is planned.



## Summer timetable from 15 April 2024

This year, Easter was relatively early (March 31, 2024: Easter Sunday) and Zermatt Unplugged will also close its doors on April 14, 2024.

As a result, it was decided to implement the summer timetable for e- bus operations as early as Monday, April 15, 2024 .

## Changes

Specifically, with the implementation of the summer timetable, there will be only 2 buses on the green line instead of 5 and 1 on the red line instead of Only one bus will run instead of three. In case of increased passenger volume, an additional bus may be put into service on a case-by-case basis.

## information

The current timetables can be found on the website [www.e-bus.ch](http://www.e-bus.ch), at the stops, or in the Matterhorn app. If you have any questions, our e-bus staff will be happy to assist you.

You can also reach us at [elektrobus@zermatt.ch](mailto:elektrobus@zermatt.ch) or by calling 027 967 45 68.

The E-Bus team wishes you a pleasant journey.

Topic selection – What topics interest you?

Zermatt Inside

## What should we report on?

Should a previously published topic be revisited?

Participate actively in the topic selection process now!

We would be happy to receive your feedback

Oliver Summermatter | Coordinator of "Zermatt Inside" | Municipality of Zermatt | [inside@zermatt.ch](mailto:inside@zermatt.ch) | Phone 027 966 22 66





Municipality of Zermatt

## Noise – construction noise and closure days

The fourth part of the article series “All about construction” deals with the topics of construction noise and closure days.

Noise causes stress and makes us ill. As unwanted and unhealthy noise, it can impair our mental and physical well-being.

affect (Federal Office for the Environment). With the municipal noise abatement regulations (LBR), the municipality attempts to protect residents and visitors as best as possible from excessive noise. Nevertheless, significant noise disturbances must be expected, especially during the construction season, especially during excavation.

Noise is perceived differently by each person ; what bothers one person may be perfectly fine for another, and vice versa. For this reason, "noise" is a  
**This is an extremely sensitive topic and is primarily** referred to as "construction noise" in the article series "Building in Zermatt".

Wherever construction is taking place, construction noise is inevitable. Therefore, and also out of consideration for tourism, which peaks primarily in the winter and summer months, the focus for the "construction season" was set on spring and fall . This means that construction noise is generated during these seasons – spring and fall.

The handling of construction noise is regulated by the LBR. Regarding protection against noise, the basic article of the LBR, Article 2, Paragraph 1, states: "No A person may, through his conduct or technical equipment, generate noise which he could avoid by taking reasonable precautions or showing other consideration.

**The LBR defines year-round construction periods**, which specify what may be done and when , out of consideration for the public and guests. Deviations from these guidelines are only permitted for important reasons, **primarily for construction projects in the public interest.**

Less noisy work is permitted year-round in some cases. Article 6(a) of the LBR contains the specific provisions regarding construction noise. It stipulates, for example, the following:

*In consideration of the spa operation, the following devices may only be used during 20 working days, excl. Blocked days according to lit. e) in spring and autumn – in spring not before the first Monday in May:*

Trax , excavator, bulldozer  
Compressors , **jackhammers**  
Other heavy construction machinery

*The permissible operating time is:*  
7:30 a.m. – 12:00 p.m., 1:00 p.m. – 6:30 p.m.

The use of these machines outside of excavation times is only permitted for construction sites in public or destination interest and only possible with an exception permit from the local council.

**The LBR defines a series of measures** to protect the public from construction noise. These include measures that construction companies must adhere to, such as soundproof compressors or protective walls. The most effective measure, however, is to limit the working hours. These time restrictions are intended to protect the public from excessive noise emissions, especially during rest periods – morning, midday, and evening – to ensure relaxation. These times are also specified in the LBR. Violations of **these fixed working hours** can be reported to the regional police.

For several years now, helicopters have been increasingly used for construction work during the excavation periods in May and October. The focus of these operations is on roof repairs and deliveries to hard-to-reach sites. Helicopter operations **offer economic advantages, especially** in the construction of energy-optimized building envelopes.

To protect against excessive aircraft noise, helicopters are also subject to time restrictions. They may only be used for construction purposes during excavation periods and only from 9:00 a.m. to 12:00 p.m. and from 2:00 p.m. to 5:00 p.m. o'clock (Monday to Friday).

Creating an overview of all construction periods is a challenge that is undertaken once a year. The results are presented to the municipal council for approval and subsequently published as excavation and construction periods , **including on the EWG website** and as an article in "ZERMATT INSIDE."

**It is not true** that no construction work is permitted outside of the excavation periods in May and October ; there are merely restrictions. These are also laid down in Article 6 LBR. The use of other construction machinery , equipment and engines of any kind is regulated and, for example, from 07:30 to 12:00

and from 1 p.m. to 6:30 p.m. This allows construction cranes to operate in the winter to clearly de-  
**Only very** noisy machines such as concrete compactors  
or circular saws are prohibited during the winter season.

**An exception regarding noise is the** so-called "closed days." Closed days are days that are not considered Sundays or public holidays, but extend a weekend. Closed days **are therefore days with a ban on clearly defined** machinery and activities. The only **fixed closed day is Whit Monday.** **However,** the municipal council can set additional closed days, such as the Friday and Saturday after **Ascension Day and Corpus Christi. These closed days** serve, on the one hand, to provide recreation for the population , who are otherwise exposed to construction noise continuously for four weeks in May , and, on the other hand, to facilitate tourist activities on long weekends.

Which activities are permitted on closure days and which are not? On closure days, the use of construction machinery and the Drilling, blasting and spearheading work is generally prohibited (Art. 6 lit. e) LBR). **However, on official closure days,** drilling work with electric hammer drills under 10 kg and drilling work with electric drills in the

The time from 9:00 a.m. to 12:00 p.m. and 1:30 p.m. to 4:30 p.m. is permitted (Article 6 (e) LBR). The LBR's requirements must undoubtedly be complied with here as well, and appropriate measures must be taken to ensure that noise emissions are kept as low as possible. **Very simple and effective means** are closing the windows or an explanatory Conversation with the neighbor.

For gardening work, the provisions of Art. 8 LBR apply, which state that gardening work with motor-driven machines (especially lawnmowers) is only permitted on working days from 9:00 a.m. to 12:00 p.m. and from 1:30 p.m. to 7:00 p.m. are permitted. This means that restricted days are days **with a restriction on clearly defined machinery ; common gardening equipment** is not included.

**Noise is a sensitive issue. However, mutual consideration helps. Often, a preliminary discussion with** neighbors, as well as mutual understanding and possible agreements, can help to make the situation agreeable for everyone involved and prevent misunderstandings.

Should an intolerable disturbance nevertheless occur, it can be reported to the regional police based on Article 5, Paragraph 2 of the Municipal Police Regulations (PolReg). Because "unauthorized actions and behavior that may lead to a disturbance of public peace or the peace of other persons are prohibited and punishable at any time of day or night, especially on Sundays and public holidays " (Article 38, Paragraph 1 PolReg).

### Part 4

Municipality of Zermatt

## Donation and clothing collection for Eastern Europe

Call for donations for the children's home Bocsă / Romania:

In 2022, our aid organization covered the operating costs of approximately CHF 200,000 for the Bocsă Children's Center in Romania through donations and a testamentary disposition . In 2023, part of these operating costs were covered thanks to various donations and the proceeds from the Zermatt–Schwarzsee fundraising march. We need your help, support, and donations to cover our operating costs for 2024. Donations are guaranteed and will be used to the best of our ability for the children's home's operations. Our club president was able to see for himself in September 2022. The children's home, founded by Father Rolf Schönenberger, is run by the Eastern European aid organization "Triumph of the Heart." The accounting is audited by the Einsiedeln office. We have been working closely with Father Schönenberger for over 12 years, collecting donations, clothing collections, and sending Christmas packages. We **hope for your help and donations to our account: RB Mischabel-Matterhorn** , Zermatt/St. Niklaus, IBAN: CH93 8080 8009 8262 1832 2

Donations can be deducted from taxes within the legal framework .

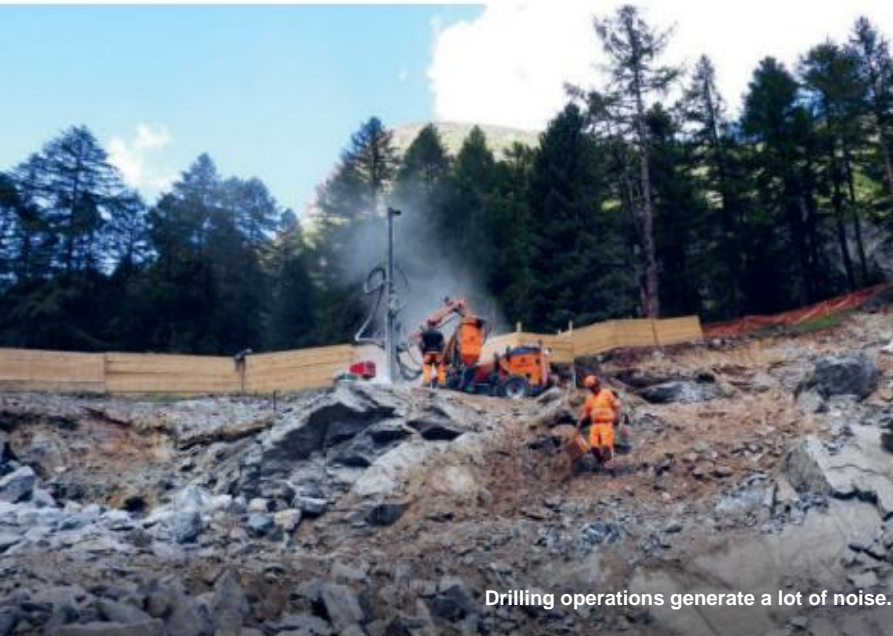
**Clothing collection:** On Saturday, May 4, 2024, our aid organization will hold another clothing collection. "Hand in Hand – Your Neighbor" provides **financial and material support to the needy population of Eastern Europe, especially children and the elderly.**

**Collection points**  
We collect well-preserved and clean clothes, shoes, bed linen , and terry cloths in boxes or black garbage bags as follows:



**Zermatt**  
**Saturday, May 4, 2024, at the following locations:**  
8:30 a.m. – 2:00 p.m.: Entrance to the funicular railway workshop  
8:30 a.m. – 12:00 p.m.: Entrance to Winkelmatten Chapel (please keep to the time!)  
8.30 – 14.30: Entrance to the parish center  
**Bag**  
**Saturday, May 4, 2024**  
08.30 – 11.00: in front of the «Walliserhof», responsible: Ms. Lydia Lauber

**Thank you very much for your support.**  
*Aid organization/ association "Hand in Hand – your neighbor"*



Drilling operations generate a lot of noise.



Protective walls can partially reduce noise.

Show



# Wermi fer d'Chelti

Your heating oil supplier in Zermatt and the surrounding hamlets supplies you with eco-fuel of the highest quality.

**JULEN HEATING OIL | ZERMATT | 027 967 47 47**



# cold-star

Refrigeration and air conditioning, energy technology, heat pumps



**Kälte-Stern AG** Kantonsstrasse 75c, 3930 Visp  
Telephone 027 946 16 49, [www.kaelte-stern.ch](http://www.kaelte-stern.ch)



Electric taxi passenger transport &  
**New wheelchair transport**



**TAXI . SNOW . CAB**  
027 967 60 66

**Erreichen Sie die richtigen Käufer - wir kennen den Markt in Zermatt.**

Individual customer service and long-term partnership in regional real estate market established since 1980. No other case.

**Call me!**

Mario Fuchs | +41 79 839 94 79 | [mario.fuchs@remax.ch](mailto:mario.fuchs@remax.ch)



Immobilienangebote unter:  
[www.remax-zermatt.ch](http://www.remax-zermatt.ch)



Municipality of Zermatt

# Resident Services / Chancellery (ED)

The ED department consists of a six-person team that performs a wide range of public service tasks. The office is located on the ground floor of the community center.

Customer inquiries are primarily handled at the counter, but some can also be handled by phone or in writing (mail or email).

The primary task of the Department of Public Administration (ED) is to maintain the various registers (residents' register, voting register, dog register) in compliance with the law . Our data collection serves as the foundation for all departments of the municipality of Zermatt, while ensuring internal data protection.

Changes in the population register

Over 110,000 changes are made to the residents' register each year. Some changes are made with just a few clicks ; others, such as registration, require the entry of approximately 50 data fields.

During a calendar year, approximately 3,500 people are registered, and roughly the same number of cancellations are recorded. The most challenging time is always just before the start of the season, when between 1,000 and 1,500 people are registered at the ED counter within a few weeks.

Assignment to the building register

Due to the Register Harmonization Act, the Federal Office of Housing and Urban Development (ED) is required to assign each person to a corresponding apartment in the Federal Building Register for registrations and approximately 1,000 annual moves within Zermatt . To ensure this allocation is recorded correctly, rental agreements with precise details of the apartment and floor are required.

Cooperation with the Department for

Population and Migration (DBM)

Migrants' stays and changes must be reported.

These include registrations and deregistrations, extensions, relocations, changes in civil status, etc. The corresponding applications are forwarded to the DBM for review and approval .

## LOOK BEHIND THE SCENES

Various services

Confirmations / Certifications

Residents can apply for various certificates ( certificates of residence, certificates of life, etc.). Approximately 6,200 certificates are issued each year.

Residents also have the option of having their signatures certified by the mayor. No appointment is required. The necessary documents can be submitted to the ED along with an official identification document (ID card or passport) during office hours .

Identity card / resident ID card (EA)

Swiss citizens with their primary residence in Zermatt can apply for an identity card at the counter. The ID card center in Visp or Sion is responsible for applications for a passport or the combined offer (identity card and passport).

Individuals who are legally resident in Zermatt and subject to income tax, as well as those with a short-term residence permit (L permit), are entitled to the EA (blue card). A passport photo is required for issuance.

This card is valid for a maximum of five years, but must be renewed annually.

Compulsory health insurance

According to the Health Insurance Act , every person residing and/or staying in Switzerland must obtain Swiss health insurance within three months (retroactively to the date of arrival). Monitoring compliance with this insurance requirement is also part of the ED's responsibilities; failure to comply will result in compulsory insurance.

naturalization

Naturalization applications are reviewed by the Civil Registry Office in Visp and the DBM. They are then processed further by the ED in cooperation with the Naturalization Commission.

After the persons have acquired Swiss citizenship , corresponding changes are made in the population register.



Back from left: André Medeiros, Doris Aufdenblatten, Caroline Furrer (Head of Department)  
Front from left: Kathrin Herren (Deputy Head of Department), Mirjam Büchler, Julia Eggel

Our data collection is considered the foundation for all departments of the municipality of Zermatt.

Votes and elections

All votes and elections at the municipal, cantonal or federal level are organized and conducted by the ED.

In addition to maintaining the electoral register, preparing the counting forms , printing the return forms and conducting the ballot, their tasks also include counting the votes and publishing the results.

Initiative / Referendum

Submitted signature forms for an initiative or referendum are checked for accuracy and confirmed by ED staff .

Dogs

Every dog staying in Zermatt for more than three months must be registered with the ED. We are responsible for the following checks and tasks:

- Initial registration of dog owner in the Amicus database
- Changes in the dog register (registration, moving away, death)
- Checking the dog's identity documents
- Review of liability insurance
- Collection/exemption of dog tax
- Compulsory course for new dog owners
- Reporting offenses to the cantonal veterinary office

Website / Archive

The ED staff manages the municipal website and publishes information in the NEWS. The ED is also responsible for maintaining the municipal archives and ensuring compliance with retention periods .



DETAILED INFORMATION TO OUR DEPARTMENT

Advertisement

Now in Zermatt:  
Internet + TV  
1 year CHF 34.–/month



valais.com



plus 1 year  
sky  
in addition

Advertisement

Now available in three  
Color variants  
available



Cube Reaction Hybrid  
Performance 500  
Allroad

CHF 2,649.00

SLALOMSPORT

Kirchstrasse 17 3920 Zermatt +41 27 966 23 66 slalom-sport.ch







Municipality of Zermatt

# Feriu(s)pass Visp district, July 15th – 28th, 2024



Creative crafts, dancing, climbing, a soccer tournament, police work, Air Zermatt, and much more. Children from kindergarten to secondary school can enjoy a variety of interesting activities in the Visp district during the last two weeks of July.

For only CHF 20 per child, you can travel on public transport in the district. In addition, various mountain railways, swimming pools, and climbing parks are also accessible. and much more. Many basic offers can be accessed without restrictions with the pass. You can choose from over 100 creative activities . Our program then assigns all children and young people from the district to the selected activities and tries to fulfill as many wishes as possible. Even if your child can't decide on a particular activity, it's still worth checking out the basic activities and ordering a pass.

### How does the Feriu(s)pass District Visp work?

The flyer will be distributed by teachers in all schools during the week before the May holidays ( please ask). Your children and young people can then choose from the many offers and register.

Please send your application to the relevant address (PO Box 98, 3925 Grächen) before the registration deadline.

From 3 June 2024, the passports will be deposited with the municipalities. and must then be picked up there. The children's pass shows them which activities they can take advantage of. If your child is ill on the day of the activity or is unable to attend at short notice, please inform the office . The place will then be allocated according to the waiting list.

**Important:** The Feriu(s)pass is very popular, and some offers have limited spots available per event. It's possible that your child may not be able to take advantage of all of the selected offers.

### The dates for the Visp District Holiday Pass

From 15 April 2024, the offer flyers will be distributed in the schools in the Visp district  
May 22, 2024 Registration deadline  
3 – 28 June 2024 Passports available for collection at the municipalities in the law firm (don't forget your passport photo)

We would like to take this opportunity to thank the providers for making this program available to the children and young people, thus dedicating their time to making these unique experiences possible. We would also like to thank the schools and communities **who continue to actively support us.**

### Information: [www.feriupass.ch](http://www.feriupass.ch) or the

Feriu(s)pass Secretariat in Grächen, 079 746 80 37

We are looking forward to it ♪

Holiday Pass Commission District Visp

Municipality of Zermatt

# Zermatt Youth Fund – financial support

Applications must be submitted by 19 April 2024



MORE INFO

The Zermatt Youth Fund aims to support clubs, groups, and events that significantly promote the interests of young people. The target group is defined as children of preschool age up to young adults up to the age of 20.

### Income from the Youth Fund

The Youth Fund was established in 2011 by the Zermatt Business Association, which annually credits the proceeds from the Folklore Festival to the Youth Fund. Additional sources of income include residual amounts **from club dissolutions and other donations.** The Youth Fund Committee would like to express its sincere gratitude to all donors. Only through this income is it possible to support the many great offers in Zermatt.

### Active assistance

The Youth Fund's funds are generated through the proceeds of the Folklore Festival. The Youth Fund received CHF 8,000 from the 2023 Folklore Festival.

To ensure the smooth running of the festival, the **organizing committee needs many hard-working volunteers every year.** Associations and groups that have received a contribution from the Youth Fund are also asked to actively help with the festival.

### Application review

The Youth Fund Commission, consisting of five members, is responsible for examining all submitted applications and **subsequently allocating financial resources.**

The applications already submitted are currently being **reviewed by the Commission for completeness and accuracy.**

### Applications must be submitted by April 19, 2024

**Decisions regarding financial support are made in April and November of each year. Applications for the current year can be submitted until April 19, 2024.**

### Available online

The application form, guidelines, and regulations are available on the website [www.jastow.ch/jugendfonds-der-gemeinde-zermatt/](http://www.jastow.ch/jugendfonds-der-gemeinde-zermatt/) . If you have any questions, you can also contact the Youth Office.

### Submission of applications and any questions

All applications must be submitted to the following address:

Mattertal Youth Work Center  
Attn: Bianca Ballmann  
English Quarter 8, 3920 Zermatt

Or via email

[mattortal@jastow.ch](mailto:mattortal@jastow.ch)

Phone: 079 303 45 04

We support young children in

Preschool age to young

Adults aged 20 or younger.

Show

## My new Solar system.

Our renovation for your living prospects.

Learn more [lauber-iwisa.ch](http://lauber-iwisa.ch)

**Lauber iwisa**  
Gebäudetechnik, die verbindet.

## Energy consulting & solar energy

[strassmann-ag.ch](http://strassmann-ag.ch)  
[info@strassmann-ag.ch](mailto:info@strassmann-ag.ch) +41 27 967 04 05

**STRASSMANN**  
GEBÄUDEHÜLLE AG

Show

## We can handle pressure!

Flyers | Books | Cards | Letterhead | Envelopes | Business cards | Magazines  
| Layout | Brochures | Placemats | Mailings | Posters | Notepads | Tarpaulins  
| F12 posters and much more.

**VALMEDIA**

Pomonastrasse 12 | 3930 Visp | T 027 948 30 03 | [info@valmedia.ch](mailto:info@valmedia.ch) | [www.valmedia.ch](http://www.valmedia.ch)

## Car rental from CHF 59.-

[www.zubi-rent.ch](http://www.zubi-rent.ch) 027 967 10 37

Asphalt machine



Zermatt Citizens' Community

# Timber storage areas in Zermatt – A sustainable look into the future

At the town meeting on December 11, 2023, the Zermatt community announced that the timber storage areas in Zermatt are becoming exhausted due to the changing population situation. This situation requires coordinated action to use resources wisely and preserve the landscape.



According to the forester, most of the timber yards located on the municipality's land are **occupied by privately owned timber** that has been there for some time and has not yet been collected. The municipality therefore requests the owners of timber yards to collect the privately owned timber by the end of June 2024. From that point on, the remaining timber on the municipality's plots will be considered the property of the municipality, and the remaining timber will be removed by the Forestry Office.

The timber storage areas  
occupied by private individuals on the gro  
Citizens' community must  
be vacated at the end of June.

Overall, the efforts of the community are in line with the principles of sustainability and the preservation of natural resources.

Responsible management of timber storage areas makes an important contribution to environmental protection. The timber transport process is difficult due to the steep terrain of the surrounding forest areas.

demanding. The wood is transported from the felling area by helicopter or mobile cable crane, sorted according to quality criteria, and then prepared for transport to Täsch. While timber is used for various purposes, firewood and wood chips are used by the locals or for the production of pellets. The regulations regarding transport through the snake pit must be observed , which requires a permit.

One aspect of sustainability is the support of the 5-star Grand Hotel Zermatterhof by the Zermatt community. By using specially produced wood pellets from forest waste, the hotel promotes the **ecological management of 900 hectares of local forests** . Thus, the hotel contributes to reducing its **carbon footprint while supporting** environmental conservation.

Show



At the end of this winter season, we say goodbye to the "Whymper-Stube".  
**THANKS**  
our valued guests from near and far for their loyalty and an unforgettable time,  
our employees for their tireless, long-term commitment and all our suppliers  
and partners for their services and the always pleasant cooperation!  
Ueli and Barbara Liechti Lauber

Municipality of Zermatt

# General Meeting of the Mattertal Youth Work Centre

Since 2016, the Mattertal Youth Work Center has been organized as an association and convenes its annual general meeting, to which delegates from the individual communities and parishes are invited. Starting this year, all youth associations and interested parties are cordially invited to this meeting.

The AGM will take place on Wednesday, April 24, 2024, at 6:30 p.m. in the Green Hall in Zermatt. In addition to the budget and financial statements, the main focus will be on the work, projects, and collaboration of the Mattertal Youth Work Center. A review of the year, complete with photos, will reminisce about the past year, and a preview will provide an idea of the areas youth work will focus on next year.

The board around President Aldo Brantschen and the youth Gender workers Nicole Köppel and Bianca Ballmann are looking forward to a large audience.

**Change in the board**  
Two changes to the board of directors will be announced at the AGM. Pastor Stefan Roth was already appointed at the last AGM 2023. This year, Pastor Konrad Rieder will be joining the board to represent the parishes of Randa, Täsch, and Zermatt . We must also say goodbye to our loyal and long-standing board member Leo Schuler.

He has supported the youth workers in recent years as a school principal in the role of professional advisor. As the new school principal, Alexandra Henzen will take over this role on the board starting at the AGM. At this point, we would like to thank  
We would like to thank you once again for your valuable support over the past years and are pleased to have found new board members.

**What do the youth workers actually do?**  
Since 1996, young people and young adults in the communities and parishes of Randa, Täsch, and Zermatt have been able to count on the support of the Mattertal Youth Work Center in their projects and club activities. The youth work programs are non-partisan and non-denominational and can be used by everyone.  
We support young people in mastering their developmental challenges, in the transition from school to the **world of work, and in finding their place in society. We accompany,** advise, integrate, and encourage them in their leisure activities and act as a point of contact for various life questions. We support them in implementing their wishes and concerns, but we also involve them in the gradual assumption of responsibility. In this way, we offer young people the opportunity to acquire new skills and abilities that will be useful to them in their future lives. By fulfilling our role as translators and mediators , we make an active contribution to social and cultural integration in the community and to the development of an understanding of democracy. For us, the participation of young people and the inclusion of gender aspects are a matter of course . With our socio-spatial orientation, we contribute to improving the quality of life of children and young people in the communities and parishes.

## Invitation

General Meeting of the Mattertal Youth Work Centre  
**Wednesday, April 24, 2024, at 6:30 p.m.**  
Conference room in the school building in the courtyard

Register via email or telephone (call, SMS, WhatsApp).

### contact

Mattertal Youth Work Center  
English Quarter  
3920 Zermatt  
mattertal@jastow.ch  
079 303 45 04



A review of the year and a preview  
form part of the annual general meetin







Zermatt Tourism is pleased to introduce a significant enhancement to Zermatt's internal information platform [www.ztnet.ch](http://www.ztnet.ch): an AI-powered chatbot that streamlines the process of registering and managing accommodations using the TOMAS Channel Manager.

## Zermatt Tourism Newer AI-supported Chatbot launched

The chatbot enables holiday apartment owners and hoteliers to efficiently provide information on various aspects such as adjusting the number of bedrooms, uploading images, setting prices and checking availability.

The new chatbot acts as a knowledgeable virtual assistant , providing prompt and targeted answers to user inquiries. It aims to optimize the user experience by guiding owners through all steps of the registration and management process. Whether users are experienced hosts or signing up for the first time, a chatbot is an extremely practical tool for simplifying and making the tasks associated with renting accommodations more understandable for users.

The chatbot has been specifically trained to understand and answer a wide range of queries related to the registration and management of an accommodation facility , simplifying the entire process.

Our commitment to practical solutions is demonstrated by the integration of this AI-powered chatbot. In times of digital progress, this chatbot helps increase efficiency and offers users of [ztnet.ch](http://ztnet.ch), [zermatt.ch](http://zermatt.ch), and, in the future, [zermatt.swiss](http://zermatt.swiss) a new and innovative tool.

**Note:** Our chatbot and we are constantly learning, which may lead to misinformation depending on the situation. We are continuously working to improve our services.

Zermatt Tourism

## Zermatt Tourism and Lindt & Sprüngli enter into partnership

**Sweet news: Zermatt Tourism is pleased to announce that Lindt & Sprüngli Switzerland is the new official chocolate partner. The chocolate manufacturer will join Zermatt Tourism's highest partnership level as a so-called "Peak Partner" for 2024 and 2025.**

With Zermatt Tourism and Lindt & Sprüngli Switzerland , two players in the partnership sector are joining forces , sharing common values: premium, Swissness , and passion. Fabrizio Gull, Head of Destination Services at Zermatt Tourism, says: "The goal of the new partnership is to foster exchange with the business community , develop new networks, jointly implement co-creation projects, and inspire each other."

Lindt & Sprüngli. Lindt & Sprüngli also scores points with its presence in Zermatt. The "Lindt Chocolate Shop Zermatt" is located in a prime location on Zermatt's Bahnhofstrasse.

In addition to the new partnership with Lindt & Sprüngli, Zermatt Tourism maintains partnerships with outdoor equipment supplier Mammüt, pocket knife manufacturer Victorinox, watch brand Hublot, and bike equipment supplier Cuore. They all join forces with their identity.

tity fits seamlessly into Zermatt Tourism's partnership strategy .

Lindt & Sprüngli joins Zermatt Tourism as a "Peak Partner," the highest level of partnership. The partnership was announced on the occasion of the 89th anniversary of the Zermatt Tourism Board.

ordinary General Meeting of Zermatt Tourism on 7 February 2024.

On this occasion, a Lindt «Maitre Chocolatier» served the attending service partners from the destination fine samples from the in-house production of



Zermatt Tourism

## Attract winter guests for the summer

Zermatt Tourism has set itself the task of providing loyal Winter guests who Destination Zermatt – Matterhorn recurring visitors, but also those who are enchanted by the Zermatt winter for the first time, actively draw attention to the summer time.



For this purpose, three new summer packages were created together with various service providers to draw winter guests' attention to attractive summer offers.

As an additional incentive , ten destination vouchers worth 10% of the package price will be raffled off among all bookings of the new packages .

The three packages in detail:

**First steps on the glacier**

The "First Steps on the Glacier" package takes you from Zermatt across alpine meadows up into high alpine terrain. Over two days, guests can get a taste of mountaineering before climbing the highlight of the tour—the 4,164-meter-high Breithorn.

The goal is to discover the fascination of the mountains and gain your first high-alpine experience in Zermatt. Two unforgettable days full of adventure and challenges are offered, while simultaneously immersing yourself in the breathtaking beauty of the alpine and high-alpine terrain.

The highlight of these intense days is undoubtedly the ascent of the Breithorn, the first 4,000-meter peak of my mountaineering career. As I reach the summit, I feel a special thrill. Every step brings me closer to my goal, and the anticipation of the incomparable view grows.

**Culinary hike**

In addition to the impressive views of the highest peaks in the Alps, culinary delights are among the highlights of the Gornergrat. The Gourmet Ticket combines both. This culinary experience day will make the hearts of gourmets beat faster . Guests discover various culinary stations and move from one station to the next on foot or by the iconic cogwheel railway.

The practical Peak Pass offers unlimited travel on the following routes: Zermatt – Matterhorn Glacier Paradise, Zermatt – Rothorn, Zermatt – Gornergrat, and Furi – Riffelberg. Admission to the Glacier Palace and use of the Matterhorn Gotthard Railway between Randa, Täsch, and Zermatt are also included in the pass.

**Individual bike experience**

This package offers a tailor-made program for perfect biking days in Zermatt. A certified bike guide from the destination is dedicated entirely to

The course focuses on the guests' mountain bike skills and caters to their individual needs. Safety, progress, fun, and experience are paramount.

Beginners will be introduced to mountain biking step by step, allowing them to safely tackle their first trails . Advanced riders will expand their skills and benefit from valuable input and tips. The diverse trail infrastructure, set against the striking mountain backdrop of the Matterhorn, perfectly rounds out the experience.

All information about the packages is described under the following link:

<https://www.zermatt.ch/sommerinspiration>

In addition to the new packages, there is an activity barometer for summer inspiration. Based on guests' personal wishes and ideas about what they would like to experience during their summer stay, the barometer suggests suitable packages and activities.

Flyers were created to promote the summer offers.

These flyers are available at sports shops, ski schools , hotels, and at the Zermatt Tourism counter.

The flyers are handled as follows:

- Users can discover the summer behind the winter image by rubbing it with a solid object
- Direct reference to the three new packages • Reference to the activity barometer on the back

Efforts to attract winter guests to summer in Zermatt are continuously communicated through various channels, such as Zermatt Tourism's social media accounts, on screens, in the Matterhorn app, and via blog posts.



Zermatt Tourism strives to

that winter guests are even more

to summer in Zermatt

be made aware of.



# Early spring

Hardness faded.  
Suddenly the greyness of the meadows is revealed.  
Small waters change the emphasis.  
Tenderness, inaccurate, reaching for the earth from space.

Paths go far into the country and show it.  
Unexpectedly you see his rising  
Expression in the empty tree.

Rainer Maria Rilke  
(1875-1926)



The editorial team, service partners, and advertisers of Zermatt Inside wish all readers a wonderful start to spring.



### Lehrstellen

Wir bilden im Bereich Sanitär und Spenglerei Lehrlinge aus. Bei Interesse meldet Euch telefonisch oder per Email.



### Offene Stellen

Zusammen sind wir stark - mit dir noch stärker!

Sanitärinstallateur EFZ

Spengler EFZ



## FUX JOSI HAUSTECHNIK

Fux Josi Haustechnik  
Eye 82  
3924 St.Niklaus

24h Tel. 0041 27 956 23 22  
info@fuxjosi-haustechnik.ch  
www.fuxjosi-haustechnik.ch

## Partl AG

SCHREINEREI

3920 Zermatt | T +41 79 611 17 47 | www.partlag.ch



WERBEAGENTUR IN ZERMATT



tucaya-design.ch

### WEBSEITEN & GRAFIKDESIGN

WEBDESIGN • LOGO DESIGN • SPEISEKARTEN  
PLAKATE • FLYER • VISITENKARTEN • ROLL-UP

### IMPRINT

**editor**  
Municipality of Zermatt (EWG), Citizens' Community of Zermatt (BG), Zermatt Tourism (ZT), Zermatt Bergbahnen AG (ZBAG), Gornergrat Railway / Matterhorn Gotthard Railway (GGB/MGB)

**Editorial Committee**  
Oliver Summer matter (EWG, coordinator), Claudia Beaufort (BG), David Taugwalder (ZT), Marc Lagger (ZBAG), Christoph Anderegg (GGB/MGB)

**Editorial editing** rottenedition gmbh

**Advertisements and subscriptions**  
rottenedition gmbh, Rico Erpen, info@rottenedition.ch, +41 79 344 16 44

**Layout**  
pomona.media, Visp / rottenedition.ch

**Pressure**  
Valmedia, Visp / on 100% recycled paper

**Edition**  
4,700 copies, published 6 times a year

**distribution**  
free of charge to all households in Randa, Täsch and Zermatt

**Your opinion is important to us**  
inside@zermatt.ch / inside.zermatt.ch



Zermatt cable cars

## Cooperation in accounting and Trust department in Zermatt

The two local financial companies Zermatt Support AG and Treuhand Taugwalder AG have concluded a cooperation agreement for their respective service offerings and will work together in the future.

Despite the future cooperation, the two companies will remain legally independent and continue to serve their existing clients. New clients will be approached according to their needs and interests.

of services. The collaboration is intended to strengthen the range of services available to Zermatt companies and, at the same time, open up interesting career prospects for interested local individuals.

Since its founding in 1993, Treuhand Taugwalder AG has been active in the trust and tax consulting sector and is deeply rooted in the Zermatt-Matterhorn destination . The company boasts long-standing client relationships and currently employs five people with extensive experience and industry-specific training.

Josef Taugwalder, owner of Treuhand Taugwalder AG, says: «The future cooperation between the two companies also opens up to existing customers

"We offer both new and existing customers a competent, efficient, and tailored service offering. The cooperation with Zermatt Support AG is a significant and groundbreaking step for our company."

Zermatt Support AG was founded in 2002 by the Zermatt Civic Community and Zermatt Bergbahnen AG with the purpose of taking over the financial accounting of both companies, thus saving resources and establishing a center of expertise for financial accounting. Zermatt Support AG now manages the accounting for various companies in Zermatt and the Nikolaital Valley and, under a mandate agreement, fully manages the BVG Collective Foundation Matterhorn. Currently, Zermatt Support AG employs 13 people .

**Vital Supersaxo, Managing Director of Zermatt Support AG,** says: «We are very pleased about the cooperation with Treuhand Taugwalder AG. This collaboration enables the two companies to leverage synergies and offers clients a trustworthy and agile point of contact for their concerns.

The cooperation optimizes and expands the use of human resources of both companies and complements the existing services offered by both partners. The collaboration also enables a future-oriented expansion of the offering in the areas of accounting and payroll, as well as trust and tax consulting services in Zermatt.

The collaboration covers the following areas:

- Accounting organization • Accounts receivable and accounts payable
- Financial accounting with monthly reporting
- Payroll including social insurance
- Succession and tax advice
- Revisions

Customers can use all offers or just individual parts of them. The specific need will be discussed during a non-binding determined or established during the course of the conversation.

Both companies are happy to answer any questions you may have .



Zermatt Support AG  
Vital Supersaxo  
027/966 46 46  
vital.supersaxo@zsuag.ch



Treuhand Taugwalder AG  
Trust Taugwalder AG  
Josef Taugwalder  
027/967 65 65  
mail@treuhand-taugwalder.ch



Gornergrat Railway

# Gornergrat Railway – Spring and summer offers

In its 126th year of operation, the Gornergrat Railway once again offers a wide range of special rides and experiences.

The train ride to the Gornergrat has never been so luxurious. An unforgettable journey to the Gornergrat, surrounded by a nostalgic atmosphere in a vintage carriage from 1961. The special day begins in a cozy, historic setting with a warm welcome, a welcome drink, and regional aperitif specialties at Edward's Bar-Café in Zermatt. After an exciting tour through the old village, you arrive at the valley station of the Gornergrat Railway. Throughout the entire journey, guests enjoy breathtaking views of the Matterhorn. A delicious four-course meal, including wine pairing, is served at the Riffelalp Resort . The multilingual concierge, not only an expert on the region but also an entertaining storyteller, will accompany the entire journey with fascinating anecdotes.

Every Wednesday and Saturday  
from 26 June to 14 September 2024



Gornergrat Gourmet Ticket



Meet the Sheep

The approximately 120 Valais Blacknose sheep in the Gornergrat region can be tracked and visited using GPS. A local shepherd provides expert information about the woolly four-legged creatures.

Daily  
from June 29 to September 8, 2024

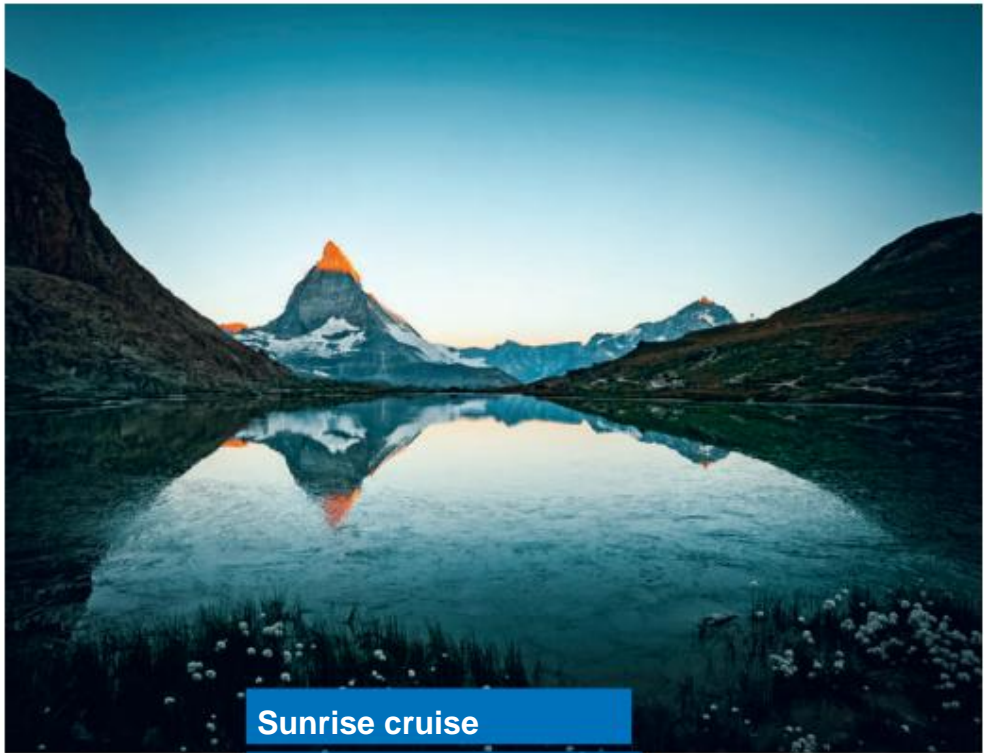
The Gornergrat – the excursion destination in Zermatt with unforgettable Mountain experience

The breathtaking Gornergrat Alpine Garden is perched at approximately 2,800 meters above sea level near the Rotenboden station and offers breathtaking views – the Matterhorn, the Riffelhorn, and the Riffelsee seem almost within reach. On more than 5,000 square meters, adventurers and nature lovers can explore the wonderful flora and vegetation of the Gornergrat. The alpine garden can be explored on a variety of paths. Numerous signs with QR codes provide information about the fascinating world of alpine plants.

The main flowering period is in June and July



The highest  
Alpine garden of Europe



Sunrise cruise  
Riffelsee & Gornergrat

Simply switch off and experience the most beautiful sunrise in the Alps with the world-famous reflection of the Matterhorn in Lake Riffelsee, and start your day with a culinary treat, with or without a breakfast buffet at the 3100 Kulmhotel Gornergrat – this unique experience is made possible by sunrise tours. The tours are accompanied by knowledgeable local Zermatt hiking guides.

Every Sunday  
from 7 July to 29 September 2024

## All year round



ZOOM the Matterhorn  
See. Feel. Marvel.

The multimedia world of experience, with its presentation of the Matterhorn and the high alpine mountains, is always worth a trip to the Gornergrat. Zooming in takes place in three stages:

The panoramic cinema lets an entire year pass by in just a few minutes, allowing visitors to experience the four seasons on the Gornergrat with their respective special features in picture and sound .

With the high-performance periscopes, the Matterhorn seems close enough to touch. Additional information about the surrounding mountains is displayed for each image section.

The crowning finale: Sit in the floating chair, put on 3D glasses and then circle the Matterhorn in a leisurely or sporty paragliding flight – "only" virtual, but still quite "real".

Admission is included in the Gornergrat cable car ticket.

Open daily  
from approximately 9:45 am to 4:15 pm  
(exact seasonal times see gornergrat.ch/zoom)



«Golden Spot»:  
The photo point on the Gornergrat

A familiar face on the Gornergrat becomes a major attraction: the historic locomotive He 2/2 3003 – one of the three locomotives of the first generation of the Gornergrat Railway – has been repaired, gilded, and prominently placed on the summit. Unmissable – locomotive 3003 sparkles in gold and immediately catches the eye as it enters Gornergrat Station. Along the themed trail, you'll learn fascinating information about the history and development of the Gornergrat Railway . The Golden Spot is the perfect spot for a souvenir photo with the Matterhorn in the background.

The photo point and the themed trail are freely accessible, open all year round, and can be experienced free of charge by all guests.



Due to construction work, the Gornergrat Railway will be completely closed on the following six days: Saturday, 2 to Thursday, 7 November 2024

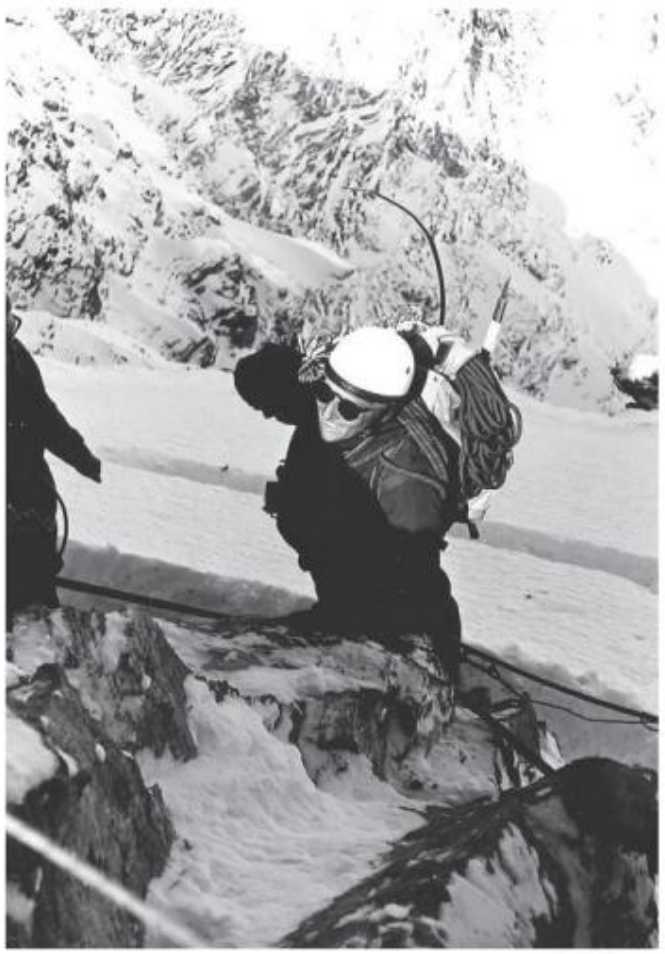


History of Zermatt

# Erich Friedli

## From mechanical engineer to mountain rescuer

Erich Friedli came to mountain rescue more or less by chance: During a mountaineering tour in the Glarus Alps, he organized the rescue of an injured mountaineer. He became known in 1957 for the dramatic rescue of the Italian Claudio Corti from the Eiger North Face. Ten years later, he led the rescue of the Czechoslovakian Stanislav Lednár, who had suffered a fatal accident on the Matterhorn North Face.



With steel cable device and Alouette III on the Matterhorn North Face

Mountaineering, and especially mountain rescue, became increasingly important in Erich's life. He was involved in the Thun rescue station, the Swiss Alpine Club, and developed rescue equipment.

In the early 1950s, Ludwig Gramminger developed and tested the first steel rope rescue devices. After the famous Eiger rescue, the steel rope became an indispensable rescue device.

Erich Friedli and his workshop manager Ernst Baur also recognized the development potential of these winches and meticulously refined the device. Erich brought practical requests to the company, while Ernst and his staff developed and tested them until Erich was satisfied. This made the winch increasingly more professional and efficient. Thus, in the early 1960s, the "Friedli Winch" was introduced at rescue stations.

In the winter of 1967, Stanislav Lednár suffered a fatal accident on the Matterhorn's north face. When the victim's family requested his rescue, it was a given for Erich to organize the rescue. Together with René Arnold, a mountain guide from Zermatt, he assembled a rescue team from all over Switzerland. For the first time, the "parallel technique" was used in such a large rescue operation. This allows the rescuers to shift sideways, something impossible alone, and, above all, safety is much higher for the rescuers because the two rescuers are connected. An Alouette III helicopter was also used for the first time. This helicopter was used primarily to fly supplies to the Hörnli and Solvay huts. In Erich's report, we read:

"With a lot of luck, the last transport flight can be carried out around midday; approximately 300 kilograms of equipment did not have to be carried. The team can now begin the ascent to the hut; ten men ascend to the 'Solvay'. The first roped parties reach the refuge in time; the rest are surprised by a thunderstorm and have to flee the ridge. They find refuge at the old hut site and then climb over the heavily snow-covered rocks to the Solvay Hut as night falls."

The next day, at 8:15 a.m., the first rope teams arrive on the shoulder; the team from the Hörnli Hut is already 100 meters above the Solvay Hut. Shortly before 10:00 a.m., René Arnold and Ruedi Kaufmann are lowered into the wall. After two arduous traverses, the two reach the accident site at 12:35 p.m. An hour later, the haul-up begins, and at 3:00 p.m., the rescuers are at the top of the shoulder with the body. After the remains

After the men were flown out by helicopter, the dismantling of the equipment and the dismounting of the crews began. At 6:15 p.m., the last rescuer arrived at the Hörnli Hut, from where they were flown to Schwarzsee. The men traveled by train to Zermatt, and by 8:00 p.m., the entire crew arrived safely in the village.

Erich Friedli (\* 1911. † 1995)

Mechanical engineer, mountain rescuer, President of IKAR

- around 1933: First rescue operation in the Glarus Alps
- 1957: Rescue of Claudio Corti from the Eiger North Face
- 1951–1960: Further development of the steel cable device (Friedli winch)
- 1956–1969: Member of IKAR
- 1969–1985: President of IKAR

July 2–4, 1967: Rescue of Stanislav Lednár, who had died in an accident, from the north face of the Matterhorn

1979: Awarding of the "Merite Alpin" at FIFAD, Les Diablerets

«Comradship stands on the mount

in the foreground; but especially strong

in rescue operations.»





Zermatt cable cars

# Final spurt at the valley station Matterhorn Express

The winter season is coming to an end, and so is the construction site around the Matterhorn Express valley station.

While the ticket office area, ski lockers, and sanitary facilities on the first floor have been completed since mid-January, the offices for the Zermatt Bergbahnen administration are currently being finalized and will be available starting in April.

The new valley station on Schluhmattstrasse offers more Space and comfort for guests from all over the world. The wooden elements combined with the light-filled building de appear modern and calm at the same time. All elements of the new valley station will be installed by mid-summer 2024. and completed. In addition to adding the typical blue floor of the Zermatt Bergbahnen in front of the ticket office and cable car queue area, the ceiling above will be finished with contrasting wooden elements. All construction machinery, including the crane in front of the station, is to be removed by June . There is still much to do until then, as an additional glass canopy facing Schluhmattstrasse will provide access to the cable car. even more comfortable and – especially in winter – protect the entrance from snow and precipitation. From this point on, additional information screens will again display valuable live data and warning messages directly on site.

## Open Day: Saturday, August 24, 2024

After the complete completion, a **Open day planned, where** all interested parties can get an on-site impression and enjoy a relaxed get-together with an aperitif and a tour of the new premises.

## New comfort from May

From May 2024, two new highlights will be offered. Firstly, a balcony will be available during the summer months installed on the new Zermatt-Furi cable car. When the cable car is in operation, guests can enjoy the fresh breeze and the wonderful view from the roof of the cable car. **The rooftop ride seats** 15 people. The ride can be booked as a ticket upgrade or as an extra ride for a private event.

At the same time, the new luggage counter will also **open at the ticket office at the Matterhorn Express valley station** . Here, guests can drop off their luggage for transport to Cervinia, almost like at an airport, by pre-registering using an online form. Only overnight luggage will be transported.

As soon as the administration has moved into the new office space, work will begin in the old administration building – Renovation work is underway at Haus Kumme. New housing is being created here for Zermatt Bergbahnen employees.