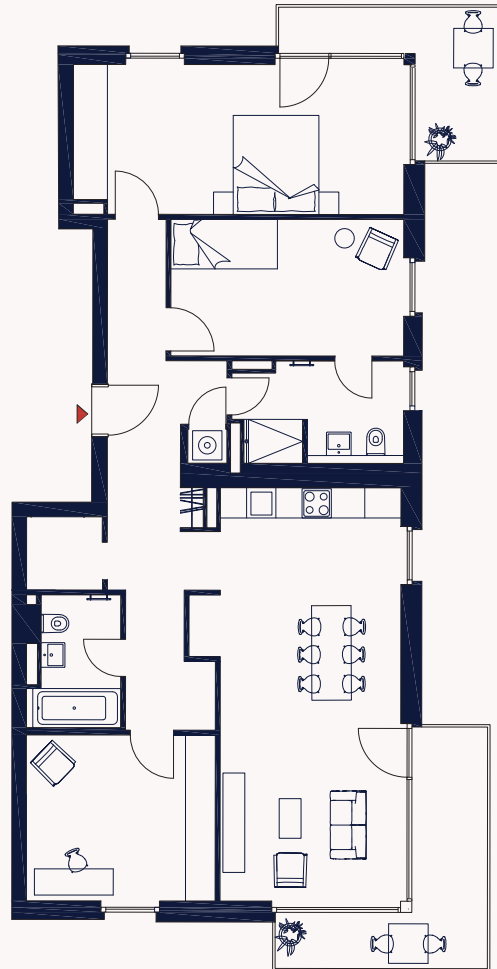
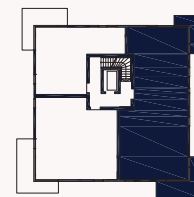




AM GENERALSHOF  
KÖPENICK



  
ZIEGERT



## HAUS 5 | 1. OG WE64 (H5.1.1) & WE65 (H5.1.2)

---

Zimmer Rooms	4
Gesamtfläche Total Area	124,01 m <sup>2</sup>

---

Balkon 1 Balcony 1	8,20 m <sup>2</sup>
Schlafen Bedroom	21,30 m <sup>2</sup>
Kinderzimmer Children's room	13,50 m <sup>2</sup>
Duschbad Bathroom	7,40 m <sup>2</sup>
HWR Utility room	0,70 m <sup>2</sup>
Flur Hallway	19,86 m <sup>2</sup>
Wannenbad Bathroom	4,70 m <sup>2</sup>
Arbeitszimmer Working space	13,40 m <sup>2</sup>
Wohnen   Kochen   Essen Living   Cooking   Dining	33,10 m <sup>2</sup>
Balkon 2 Balcony 2	11,90 m <sup>2</sup>

Die Balkone sind zu 50% (4,10 m<sup>2</sup>, 5,95 m<sup>2</sup>) in die Wohnfläche eingerechnet.

Balcony areas are factored into the floor area at a ratio of 50% (4.10 sqm, 5.95 sqm).

LAGE  
POSITION

