

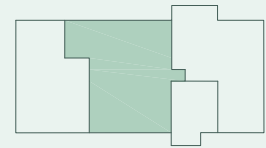
# WE 07

## FAKTEN

- 3 Zimmer
- 2. Obergeschoss
- 86,70 m<sup>2</sup>

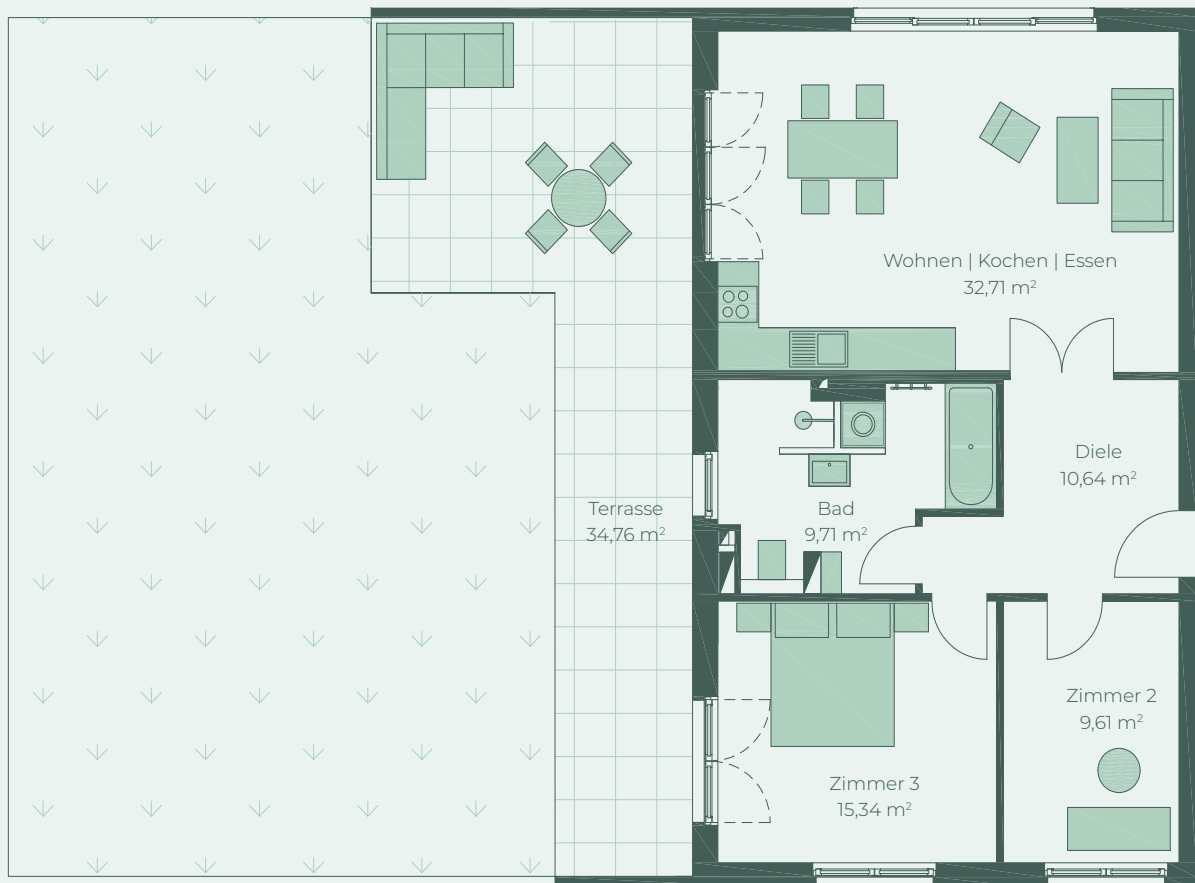
## FACTS

- 3 rooms
- 2<sup>nd</sup> floor
- 86.70 sqm



Greifswalder Straße

- Terrasse — Terrace  
Wohnen | Kochen | Essen — Living | Kitchen | Dining  
Diele — Hallway  
Bad — Bath  
Zimmer — Room



Die Balkone und Terrassen werden zu 25% in die Wohnfläche eingerechnet.  
Balconies and terraces are factored into the dwelling floor area at a ratio of 25%.

