

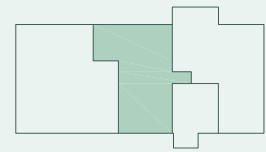
# WE 11

## FAKTEN

- 2 Zimmer
- 4. Obergeschoss
- 59,54 m<sup>2</sup>

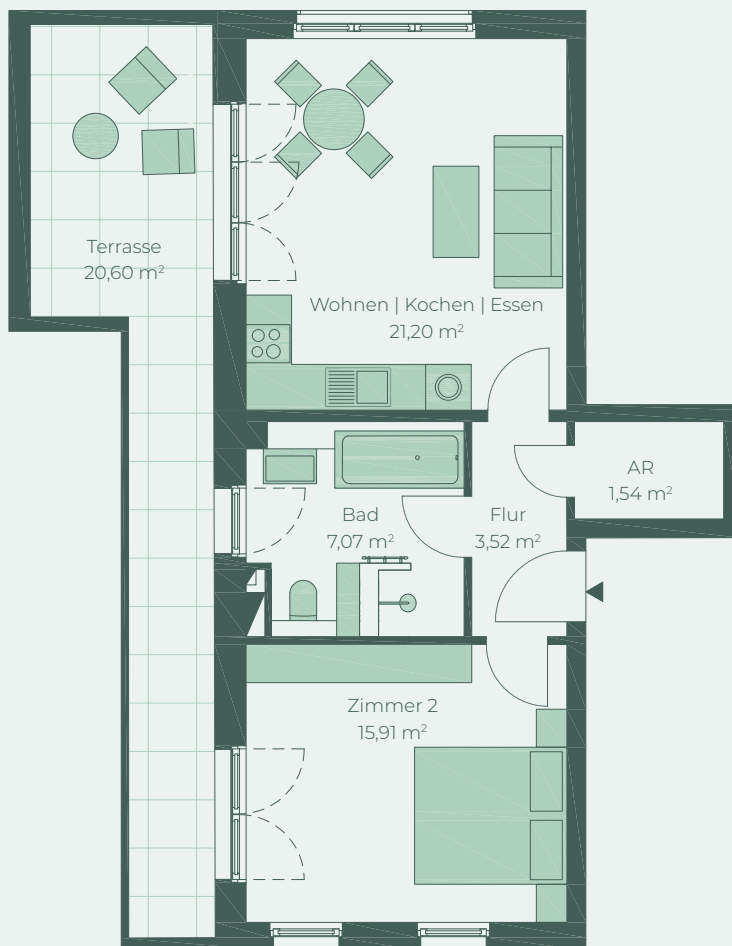
## FACTS

- 2 rooms
- 4<sup>th</sup> floor
- 59.54 sqm



Greifswalder Straße

- Terrasse — Terrace
- Wohnen | Kochen | Essen — Living | Kitchen | Dining
- Flur — Hallway
- Bad — Bath
- Zimmer — Room



Die Balkone und Terrassen werden zu 50% in die Wohnfläche eingerechnet.  
Balconies and terraces are factored into the dwelling floor area at a ratio of 50%.

