

Penthaus 21 & 22

5. OG BIS ROOFTOP-TERRASSE / TREPPENHAUS B /

5-ZIMMER-WOHNUNG / 226,33 M²

Penthouse 21 & 22

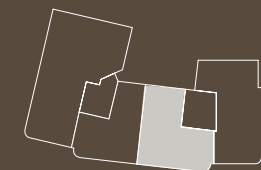
5TH FLOOR TO ROOFTOP TERRACE / STAIRWAY B /

APARTMENT WITH 5 ROOMS / 226.33 SQM



5. Obergeschoss / 5th Floor	qm / sqm
Diele / Hallway	9,80
Ankleide / Dressing Room	6,50
Schlafen / Bedroom	23,00
Bad 1 / Bathroom	10,90
Bad 2 / Bathroom 2	4,90
Zimmer / Room 1	20,70
Summe / Total	75,80
Loggia / Loggia	(4,90) 2,45
Gesamtfläche / Total area	78,25

Alle Loggien und Terrassen sind zu 50%, Rooftop-Terrassen sind zu 25% in die Wohnfläche eingerechnet. Planungsstand Juli 2018.
All loggias and terraces are factored into the floor area at 50% as well as rooftop-terraces are factored into the floor area at 25%.
State of planning July 2018.



Penthaus 21 & 22

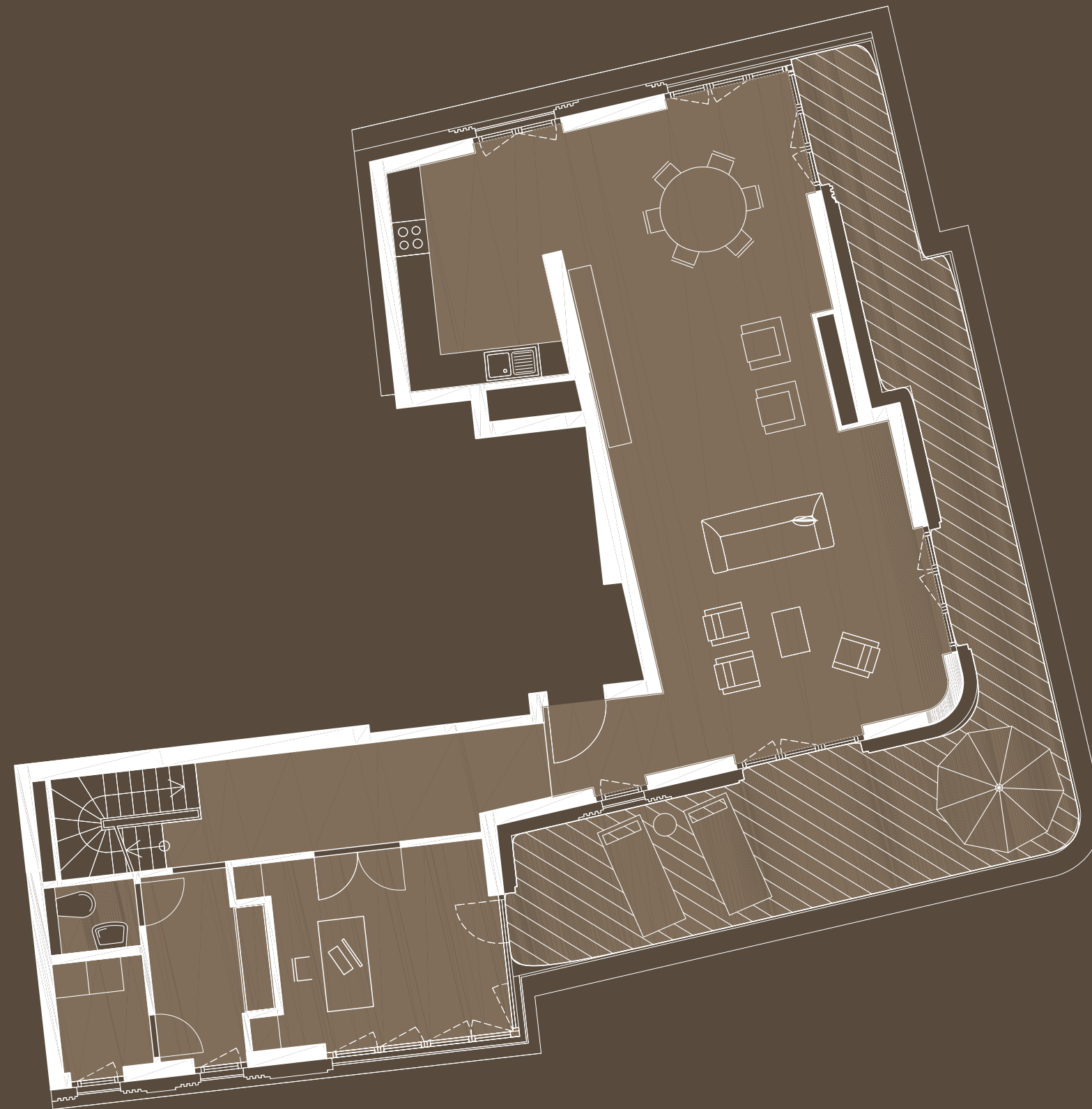
5. OG BIS ROOFTOP-TERRASSE / TREPPENHAUS B /

5-ZIMMER-WOHNUNG / 226,33 M²

Penthouse 21 & 22

5TH FLOOR TO ROOFTOP TERRACE / STAIRWAY B /

APARTMENT WITH 5 ROOMS / 226.33 SQM



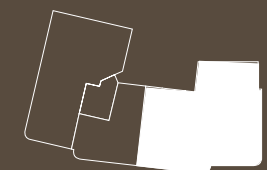
Staffelgeschoss / Penthouse	qm	sqm
Flur 1 / Corridor 1	14,40	
WC / WC	1,90	
Hauswirtschaftsraum / Utility room	3,20	
Küche / Kitchen	10,40	
Bibliothek / Library	14,20	
Essen / Dining Room	23,50	
Wohnen / Living Room	29,70	
Flur 2 / Corridor 2	3,60	
Summe / Total	100,90	

Terrasse 1 / Terrace 1 (41,60) 20,80

Rooftop-Terrasse / Rooftop-terrace (105,50) 26,38

Gesamtfläche / Total area 148,08

Alle Loggien und Terrassen sind zu 50%, Rooftop-Terrassen sind zu 25% in die Wohnfläche eingerechnet. Planungsstand Juli 2018.
All loggias and terraces are factored into the floor area at 50% as well as rooftop-terraces are factored into the floor area at 25%.
State of planning July 2018.



Penthaus 21&22

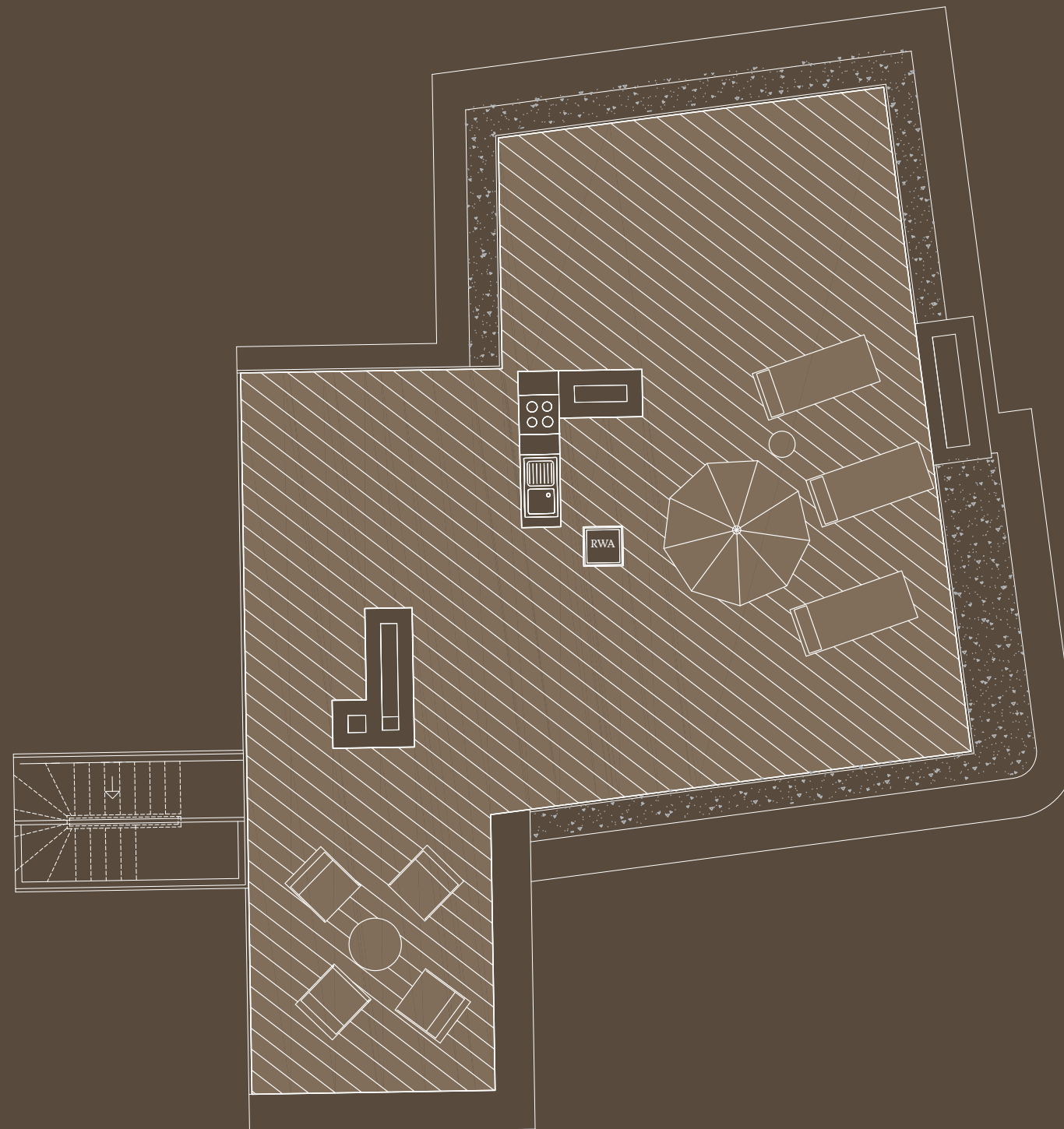
5. OG BIS ROOFTOP-TERRASSE / TREPPENHAUS B /

5-ZIMMER-WOHNUNG / 226,33 M²

Penthous 21 & 22

5TH FLOOR TO ROOFTOP TERRACE / STAIRWAY B /

APARTMENT WITH 5 ROOMS / 226.33 SQM



Terrasse / terrace	qm / sqm
Rooftop-Terrasse / Rooftop-terrace	(105,50) 26,38

Alle Loggien und Terrassen sind zu 50%, Rooftop-Terrassen sind zu 25% in die Wohnfläche eingerechnet. Planungsstand Juli 2018.
All loggias and terraces are factored into the floor area at 50% as well as rooftop-terraces are factored into the floor area at 25%.
State of planning July 2018.

