

*Amrita Devi International School  
Holidays Homework  
Session 2026-27*

*Fun • Learn • Explore • Create*

*Name : \_\_\_\_\_ Class : \_\_\_\_\_*

*Section : \_\_\_\_\_ Roll No. : \_\_\_\_\_*

*Every child is an artist and every  
holiday is a new adventure!"*

*Enjoy Your Summer Vacation!*



## Holiday Instructions For Students

### विद्यार्थियों के लिए छुट्टियों के निर्देश

#### English Instructions

#### हिंदी निर्देश

1. Wake up early and follow a healthy routine.  
सुबह जल्दी उठें और स्वस्थ दिनचर्या अपनाएँ।
2. Read books and practice writing daily.  
प्रतिदिन पुस्तक पढ़ें और लिखने का अभ्यास करें।
3. Complete your holiday homework neatly.  
अपना अवकाश कार्य साफ-सुथरा पूरा करें।
4. Eat healthy food and drink plenty of water.  
पौष्टिक भोजन करें और खूब पानी पिएँ।
5. Use cucumber and onion salad in your meal.  
भोजन में खीरा और प्याज का अधिक सेवन करें।
6. Play outdoor games and exercise regularly.  
प्रतिदिन खेलें और व्यायाम करें।

7. Help your parents in household work.  
घर के कार्यों में माता-पिता की सहायता करें।
8. Avoid use of mobile phones and TV.  
मोबाइल फोन और टीवी का उपयोग न करें।
9. Keep your surroundings clean and maintain hygiene.  
स्वच्छता बनाए रखें और आसपास सफाई रखें।
10. Learn a new skill like drawing, dancing, singing, or gardening.  
चित्रकला, नृत्य, संगीत या बागवानी जैसे नई चीजें सीखें।
11. Respect elders and speak politely to everyone.  
बड़ों का सम्मान करें और सभी से विनम्रता से बात करें।

**"Holidays are a time to refresh your mind and learn new things."**

**"छुट्टियाँ मन को ताज़ा करने और नई बातें सीखने का समय होती हैं।"**



Amrita Devi International School  
Holiday's Home Work

Subject - Computer Class - 5<sup>th</sup>

Ques 1 Write the functions of the following  
shortcut keys.

Ctrl + A

Ctrl + N

Ctrl + B

Ctrl + O

Ctrl + E

Ctrl + P

Ctrl + D

Ctrl + Q

Ctrl + F

Ctrl + R

Ctrl + F

Ctrl + S

Ctrl + G

Ctrl + T

Ctrl + H

Ctrl + U

Ctrl + I

Ctrl + V

Ctrl + J

Ctrl + W

Ctrl + K

Ctrl + X

Ctrl + L

Ctrl + Y

Ctrl + M

Ctrl + Z

Que 2 Write Full Forms of the following :-

1. CPU } LED

LED } RAM

ROM } GUI

DVD } URL

WWW } ASP

Que 3 Define the following :-

1. WordArt	Cropping
------------	----------

Installing:-	Uninstalling:-
--------------	----------------



Que 4. Answer in one word.

3. Placing a program on a

1. A special program in computer memory is called.

Windows to play digital Ans.

media file on a computer. 4. The process used for

Ans. identifying planning and

2. A process of downloading resolving a problem is

an app from app store. called.

Ans. Ans.

Que → Rearrange Jumbled Words:- Que → Find Input, Output & Storage devices.

1. SEUOM →

1. Monitor

2. NELAP →

2. Pendrive

3. UONSD →

3. Speaker

4. GRAMORP →

4. Hard disk

5. TUOUP T →

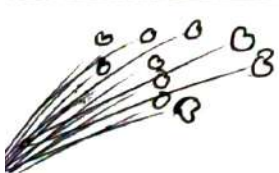
5. Mouse

6. NTUIP →

6. Joystick

7. DVIECES →

7. Printer



Que:- Write T for True and F for False.

1. The Power Plan options maximise a computer's performance.

2. The Control Panel window has six categories.

3. Apple iOS is an example of a mobile operating system.

4. The Pictures button is present on Insert tab.

5. You can insert only one symbol in a Word file.

6. In a Word file, you can add text into a shape.

7. You cannot apply Shadow effect to a WordArt.

8. A program installed on a computer can never be removed from system.

## Qs-5 (Multiple Choice Questions :-)

1. Downloading an application from the app store is called.

- a) installing      b) upstalling      c) uninstalling

2. Which of the following cannot be managed through the Control Panel?

- a) Networking settings      b) Date & Time setting      c) Create a document

3. Which of the following commands is present on the Format tab?

- a) Picture      b) Crop      c) Symbol

4. Which option can be used to insert 😊 in a word file?

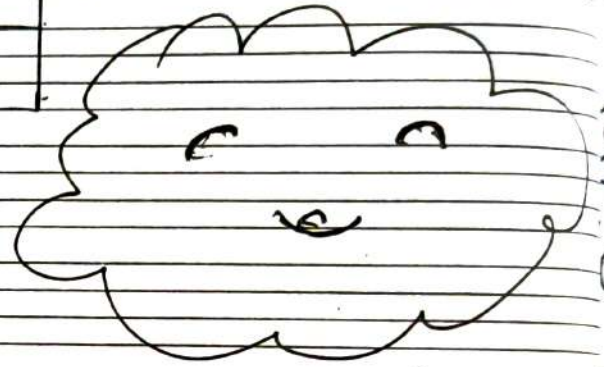
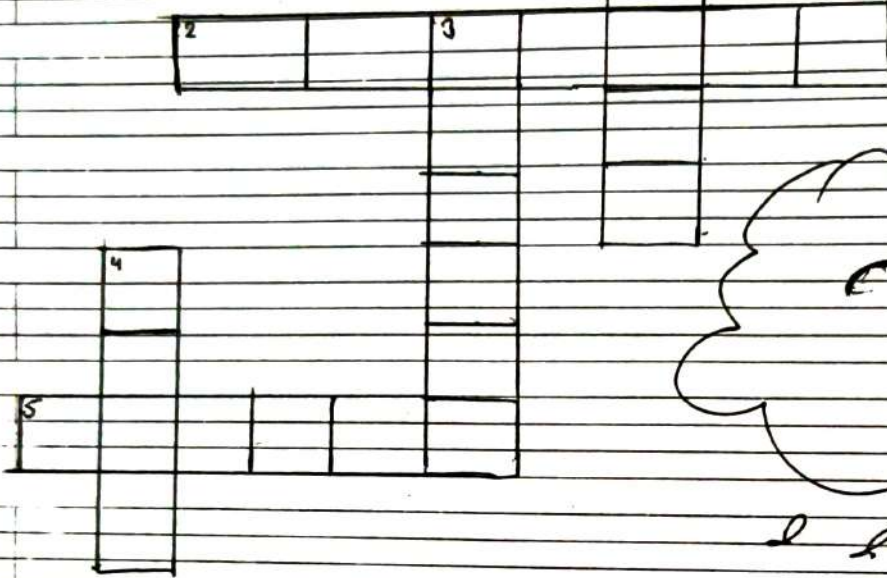
- a) Pictures      b) Symbols      c) Word Art

5. This feature lets a user insert decorative text styling in a document.

- a) Word Art      b) Font      c) Shapes

Qs-6 Solve the crossword using the clues given below :-

Qs-6 solve the crossword using the clues given below.



Across.

2. This feature is used to insert available pictures in a Word document

5. Which tab is used to change colour of the Word art text.

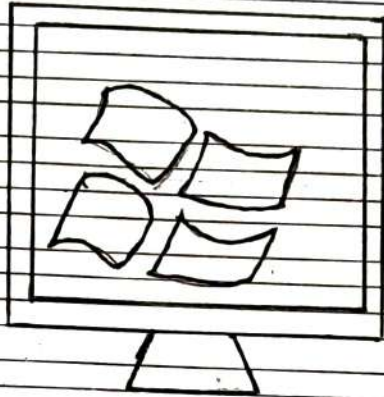
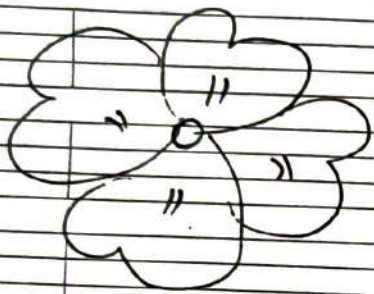
Down.

1. This feature is used to give special effects to the text.

3. This tab is used to add a symbol in a document.

4. This tool is used to delete some part of the picture in a Word document.

Que- Write 8 lines about Computer system:



1.

2.

3.

4.

5.

6.

7.

8.

Ques:- Write the purpose of the following settings in

Windows to Control Panel.

1. System and security:-

2. Network and Internet:-

3. Ease of Access:-

4. Hardware of sound:-

Que: (Write the missing letters)

i) M \_ vs \_

ii) M \_ c \_ o s o \_ t

iii) P \_ n \_ t \_ r

iv) D \_ \_ k \_ o p

v) k \_ \_ b o \_ \_ d

Que. → Match the columns.

i) Shadow and glow - (a) Deletes some part of picture

ii) Format tag - (b) Types of text effects

iii) Cropping - (c) Used to insert characters

iv) Special Characters tab - (d) Press delete key.

Que: (Fill in the blanks. ★)

1) Clicking on the Pictures button open the \_\_\_\_\_ dialog box.

2) To draw a perfect shape, press the \_\_\_\_\_ key.

3) The \_\_\_\_\_ option help to maximise your computer's performance.

4) Removing a program from a computer system is called \_\_\_\_\_.

5) Double-clicking on the \_\_\_\_\_ begins the installation process.

Ques:- Draw and explain the different parts of computer.

1. CPU:-

2. Monitor:-

3. Printer:-