

LOW PRICE EDITION

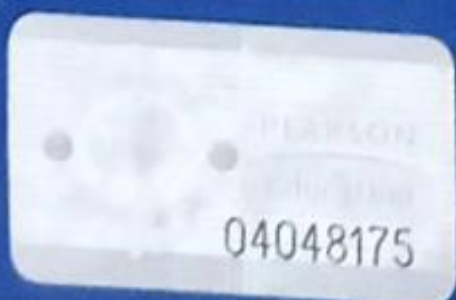
PEARSON
Education

Computer Graphics

C Version

Second Edition

Donald Hearn
M. Pauline Baker



This edition is manufactured in India and is authorized for sale only in India, Bangladesh, Bhutan, Pakistan, Nepal, Sri Lanka and the Maldives. Circulation of this edition outside of these territories is UNAUTHORIZED.

Contents

PREFACE	17		
1 A Survey of Computer Graphics	22		
✓ 1-1 Computer-Aided Design	24		
1-2 Presentation Graphics	31		
1-3 Computer Art	33		
1-4 Entertainment	38		
1-5 Education and Training	41		
1-6 Visualization	45		
1-7 Image Processing	52		
1-8 Graphical User Interfaces	54		
2 Overview of Graphics Systems	55		
✓ 2-1 ✓ Video Display Devices	56		
✓ Refresh Cathode-Ray Tubes	57		
✓ Raster-Scan Displays	60		
✓ Random-Scan Displays	61		
✓ Color CRT Monitors	62		
✓ Direct-View Storage Tubes	65		
✓ Flat-Panel Displays	65		
Three-Dimensional Viewing Devices	69		
			Stereoscopic and Virtual-Reality Systems 70
		2-2 Raster-Scan Systems	73
		Video Controller	73
		Raster-Scan Display Processor	75
		2-3 Random-Scan Systems	76
		2-4 Graphics Monitors and Workstations	77
		2-5 ✓ Input Devices	80
		✓ Keyboards	81
		✓ Mouse	81
		✓ Trackball and Spaceball	83
		✓ Joysticks	83
		✓ Data Glove	84
		✓ Digitizers	84
		✓ Image Scanners	87
		✓ Touch Panels	88
		✓ Light Pens	90
		✓ Voice Systems	90
		2-6 Hard-Copy Devices	92
		2-7 Graphics Software	95
		Coordinate Representations	96
		Graphics Functions	97
		Software Standards	98
		PHIGS Workstations	99
		Summary	99
		References	101
		Exercises	101

3 Output Primitives 103

✓ 3-1	Points and Lines	104
✓ 3-2	Line-Drawing Algorithms	106
	DDA Algorithm	107
	Bresenham's Line Algorithm	108
	Parallel Line Algorithms	112
3-3	Loading the Frame Buffer	114
3-4	Line Function	115
3-5	Circle-Generating Algorithms	117
	Properties of Circles	117
	Midpoint Circle Algorithm	118
3-6	Ellipse-Generating Algorithms	122
	Properties of Ellipses	122
	Midpoint Ellipse Algorithm	123
3-7	Other Curves	130
	Conic Sections	130
	Polynomials and Spline Curves	132
3-8	Parallel Curve Algorithms	132
3-9	Curve Functions	133
3-10	Pixel Addressing and Object Geometry	134
	Screen Grid Coordinates	134
	Maintaining Geometric Properties of Displayed Objects	134
3-11	Filled-Area Primitives	137
	Scan-Line Polygon Fill Algorithm	137
	Inside-Outside Tests	145
	Scan-Line Fill of Curved Boundary Areas	146
	Boundary-Fill Algorithm	147
	Flood-Fill Algorithm	150
3-12	Fill-Area Functions	151
3-13	Cell Array	151
3-14	Character Generation	151

Summary	158
Applications	156
References	160
Exercises	160

4 Attributes of Output Primitives 163

4-1	Line Attributes	164
	Line Type	164
	Line Width	166
	Pen and Brush Options	169
	Line Color	169
4-2	Curve Attributes	172
4-3	Color and Grayscale Levels	174
	Color Tables	175
	Grayscale	177
4-4	Area-Fill Attributes	178
	Fill Styles	178
	Pattern Fill	179
	Soft Fill	182
4-5	Character Attributes	183
	Text Attributes	183
	Marker Attributes	187
4-6	Bundled Attributes	188
	Bundled Line Attributes	188
	Bundled Area-Fill Attributes	189
	Bundled Text Attributes	189
	Bundled Marker Attributes	190
4-7	Inquiry Functions	190
4-8	Antialiasing	191
	Supersampling Straight Line Segments	192
	Pixel-Weighting Masks	194

Area Sampling Straight Line Segments	194
Filtering Techniques	194
Pixel Phasing	195
Compensating for Line Intensity Differences	195
Antialiasing Area Boundaries	196
Summary	198
References	200
Exercises	200

5 Two-Dimensional Geometric Transformations 203

5-1 Basic Transformations	204
Translation	204
Rotation	206
Scaling	207
5-2 Matrix Representations and Homogeneous Coordinates	208
5-3 Composite Transformations	211
Translations	211
Rotations	211
Scalings	212
General Pivot-Point Rotation	212
General Fixed-Point Scaling	213
General Scaling Directions	213
Concatenation Properties	214
General Composite Transformations and Computational Efficiency	215
5-4 Other Transformations	221
Reflection	221
Shear	223
5-5 Transformations Between Coordinate Systems	225

5-6 Affine Transformations	228
5-7 Transformation Functions	228
5-8 Raster Methods for Transformations	230
Summary	232
References	233
Exercises	233

6 Two-Dimensional Viewing 236

6-1 The Viewing Pipeline	237
6-2 Viewing Coordinate Reference Frame	239
6-3 Window-to-Viewport Coordinate Transformation	240
6-4 Two-Dimensional Viewing Functions	242
6-5 Clipping Operations	244
6-6 Point Clipping	245
6-7 Line Clipping	245
Cohen-Sutherland Line Clipping	246
Liang-Barsky Line Clipping	250
Nicholl-Lee-Nicholl Line Clipping	253
Line Clipping Using Nonrectangular Clip Windows	255
Splitting Concave Polygons	255
6-8 Polygon Clipping	257
Sutherland-Hodgeman Polygon Clipping	258
Weiler-Atherton Polygon Clipping	262
Other Polygon-Clipping Algorithms	263
6-9 Curve Clipping	264
6-10 Text Clipping	264
6-11 Exterior Clipping	265
Summary	265
References	268
Exercises	268

7 Structures and Hierarchical Modeling 270

7-1	Structure Concepts	270
	Basic Structure Functions	270
	Setting Structure Attributes	273
7-2	Editing Structures	274
	Structure Lists and the Element Pointer	275
	Setting the Edit Mode	276
	Inserting Structure Elements	276
	Replacing Structure Elements	277
	Deleting Structure Elements	277
	Labeling Structure Elements	278
	Copying Elements from One Structure to Another	280
7-3	Basic Modeling Concepts	280
	Model Representations	281
	Symbol Hierarchies	282
	Modeling Packages	283
7-4	Hierarchical Modeling with Structures	285
	Local Coordinates and Modeling Transformations	285
	Modeling Transformations	286
	Structure Hierarchies	286
	Summary	288
	References	289
	Exercises	289

8 Graphical User Interfaces and Interactive Input Methods 291

8-1	The User Dialogue	292
	Windows and Icons	293

	Accommodating Multiple Skill Levels	293
	Consistency	294
	Minimizing Memorization	294
	Backup and Error Handling	294
	Feedback	295
8-2	Input of Graphical Data	296
	Logical Classification of Input Devices	296
	Locator Devices	297
	Stroke Devices	297
	String Devices	297
	Valuator Devices	297
	Choice Devices	299
	Pick Devices	299
8-3	Input Functions	301
	Input Modes	301
	Request Mode	302
	Locator and Stroke Input in Request Mode	302
	String Input in Request Mode	303
	Valuator Input in Request Mode	304
	Choice Input in Request Mode	304
	Pick Input in Request Mode	304
	Sample Mode	305
	Event Mode	305
	Concurrent Use of Input Modes	307
8-4	Initial Values for Input-Device Parameters	307
8-5	Interactive Picture-Construction Techniques	308
	Basic Positioning Methods	308
	Constraints	308
	Grids	309
	Gravity Field	310
	Rubber-Band Methods	310
	Dragging	311
	Painting and Drawing	311

8-6	Virtual-Reality Environments	312	10-4	Superquadrics	332
	Summary	313		Superellipse	332
	References	314		Superellipsoid	333
	Exercises	314	10-5	Blobby Objects	334
			10-6	Spline Representations	335
				Interpolation and Approximation	
				Splines	336
				Parametric Continuity	
				Conditions	337
				Geometric Continuity	
				Conditions	338
				Spline Specifications	339
			10-7	Cubic Spline Interpolation	
				Methods	340
				Natural Cubic Splines	341
				Hermite Interpolation	342
				Cardinal Splines	343
				Kochanek-Bartels Splines	345
			10-8	Bézier Curves and Surfaces	347
				Bézier Curves	347
				Properties of Bézier Curves	349
				Design Techniques Using Bézier	
				Curves	350
				Cubic Bézier Curves	351
				Bézier Surfaces	353
			10-9	B-Spline Curves and Surfaces	354
				B-Spline Curves	355
				Uniform, Periodic B-Splines	356
				Cubic, Periodic B-Splines	359
				Open, Uniform B-Splines	361
				Nonuniform B-Splines	364
				B-Spline Surfaces	364
			10-10	Beta-Splines	365
				Beta-Spline Continuity	
				Conditions	365
				Cubic, Periodic Beta-Spline	
				Matrix Representation	366
			10-11	Rational Splines	367
8-6	Virtual-Reality Environments	312			
	Summary	313			
	References	314			
	Exercises	314			
9	Three-Dimensional Concepts	316			
9-1	Three-Dimensional Display Methods	317			
	Parallel Projection	318			
	Perspective Projection	319			
	Depth Cueing	319			
	Visible Line and Surface				
	Identification	320			
	Surface Rendering	320			
	Exploded and Cutaway Views	320			
	Three-Dimensional and Stereoscopic				
	Views	320			
9-2	Three-Dimensional Graphics				
	Packages	322			
10	Three-Dimensional Object Representations	324			
10-1	Polygon Surfaces	325			
	Polygon Tables	326			
	Plane Equations	327			
	Polygon Meshes	329			
10-2	Curved Lines and Surfaces	330			
10-3	Quadric Surfaces	330			
	Sphere	331			
	Ellipsoid	331			
	Torus	331			

10-12	Conversion Between Spline Representations	369
10-13	Displaying Spline Curves and Surfaces	371
	Horner's Rule	371
	Forward-Difference Calculations	371
	Subdivision Methods	373
10-14	Sweep Representations	375
10-15	Constructive Solid-Geometry Methods	376
10-16	Octrees	379
10-17	BSP Trees	382
10-18	Fractal-Geometry Methods	382
	Fractal-Generation Procedures	383
	Classification of Fractals	384
	Fractal Dimension	384
	Geometric Construction of Deterministic Self-Similar Fractals	387
	Geometric Construction of Statistically Self-Similar Fractals	389
	Affine Fractal-Construction Methods	392
	Random Midpoint-Displacement Methods	393
	Controlling Terrain Topography	396
	Self-Squaring Fractals	398
	Self-Inverse Fractals	405
10-19	Shape Grammars and Other Procedural Methods	407
10-20	Particle Systems	410
10-21	Physically Based Modeling	413
10-22	Visualization of Data Sets	415
	Visual Representations for Scalar Fields	415
	Visual Representations for Vector Fields	420
	Visual Representations for Tensor Fields	421

Visual Representations for Multivariate Data Fields	422
Summary	424
References	424
Exercises	424

11 Three-Dimensional Geometric and Modeling Transformations 427

11-1	Translation	428
11-2	Rotation	429
	Coordinate-Axes Rotations	429
	General Three-Dimensional Rotations	433
	Rotations with Quaternions	439
11-3	Scaling	440
11-4	Other Transformations	442
	Reflections	442
	Shears	443
11-5	Composite Transformations	443
11-6	Three-Dimensional Transformation Functions	445
11-7	Modeling and Coordinate Transformations	446
	Summary	449
	References	449
	Exercises	450

12 Three-Dimensional Viewing 451

12-1	Viewing Pipeline	452
12-2	Viewing Coordinates	453
	Specifying the View Plane	453
	Transformation from World to Viewing Coordinates	457

12-3	Projections	458
	Parallel Projections	459
	Perspective Projections	463
12-4	View Volumes and General Projection Transformations	467
	General Parallel-Projection Transformations	472
	General Perspective-Projection Transformations	474
12-5	Clipping	476
	Normalized View Volumes	478
	Viewport Clipping	480
	Clipping in Homogeneous Coordinates	481
12-6	Hardware Implementations	483
12-7	Three-Dimensional Viewing Functions	484
	Summary	487
	References	488
	Exercises	488

13 Visible-Surface Detection Methods 489

13-1	Classification of Visible-Surface Detection Algorithms	490
13-2	Back-Face Detection	491
13-3	Depth-Buffer Method	492
13-4	A-Buffer Method	495
13-5	Scan-Line Method	496
13-6	Depth-Sorting Method	498
13-7	BSP-Tree Method	501
13-8	Area-Subdivision Method	502
13-9	Octree Methods	505
13-10	Ray-Casting Method	507
13-11	Curved Surfaces	508
	Curved-Surface Representations	508
	Surface Contour Plots	509

13-12	Wireframe Methods	510
13-13	Visibility-Detection Functions	510
	Summary	511
	References	512
	Exercises	512

14 Illumination Models and Surface-Rendering Methods 514

14-1	Light Sources	516
14-2	Basic Illumination Models	517
	Ambient Light	517
	Diffuse Reflection	517
	Specular Reflection and the Phong Model	520
	Combined Diffuse and Specular Reflections with Multiple Light Sources	524
	Warn Model	524
	Intensity Attenuation	525
	Color Considerations	527
	Transparency	528
	Shadows	531
14-3	Displaying Light Intensities	531
	Assigning Intensity Levels	532
	Gamma Correction and Video Lookup Tables	533
	Displaying Continuous-Tone Images	535
14-4	Halftone Patterns and Dithering Techniques	536
	Halftone Approximations	536
	Dithering Techniques	539
14-5	Polygon-Rendering Methods	542
	Constant-Intensity Shading	542
	Gouraud Shading	543
	Phong Shading	545

	Fast Phong Shading	546
14-6	Ray-Tracing Methods	547
	Basic Ray-Tracing Algorithm	548
	Ray-Surface Intersection Calculations	551
	Reducing Object-Intersection Calculations	555
	Space-Subdivision Methods	555
	Antialiased Ray Tracing	558
	Distributed Ray Tracing	560
14-7	Radiosity Lighting Model	564
	Basic Radiosity Model	564
	Progressive Refinement Radiosity Method	569
14-8	Environment Mapping	572
14-9	Adding Surface Detail	573
	Modeling Surface Detail with Polygons	573
	Texture Mapping	574
	Procedural Texturing Methods	576
	Bump Mapping	578
	Frame Mapping	579
	Summary	580
	References	581
	Exercises	582

15 Color Models and Color Applications 584

15-1	Properties of Light	585
15-2	Standard Primaries and the Chromaticity Diagram	588
	XYZ Color Model	589
	CIE Chromaticity Diagram	589
15-3	Intuitive Color Concepts	591
15-4	RGB Color Model	592
15-5	YIQ Color Model	594

15-6	CMY Color Model	594
15-7	HSV Color Model	595
15-8	Conversion Between HSV and RGB Models	598
15-9	HLS Color Model	599
15-10	Color Selection and Applications	600
	Summary	601
	References	601
	Exercises	602

16 Computer Animation 603

16-1	Design of Animation Sequences	604
16-2	General Computer-Animation Functions	606
16-3	Raster Animations	606
16-4	Computer-Animation Languages	607
16-5	Key-Frame Systems	608
	Morphing	608
	Simulating Accelerations	611
16-6	Motion Specifications	614
	Direct Motion Specification	614
	Goal-Directed Systems	615
	Kinematics and Dynamics	615
	Summary	616
	References	617
	Exercises	617

A Mathematics for Computer Graphics 619

A-1	Coordinate-Reference Frames	620
	Two-Dimensional Cartesian Reference Frames	620
	Polar Coordinates in the xy Plane	621

	Three-Dimensional Cartesian Reference Frames	622		Matrix Transpose	633
	Three-Dimensional Curvilinear Coordinate Systems	622		Determinant of a Matrix	633
	Solid Angle	624	A-5	Matrix Inverse	634
A-2	Points and Vectors	625	A-6	Complex Numbers	635
	Vector Addition and Scalar Multiplication	627	A-7	Quaternions	637
	Scalar Product of Two Vectors	627	A-8	Nonparametric Representations	638
	Vector Product of Two Vectors	628	A-9	Parametric Representations	639
A-3	Basis Vectors and the Metric Tensor	629		Numerical Methods	640
	Orthonormal Basis	629		Solving Sets of Linear Equations	640
	Metric Tensor	630		Finding Roots of Nonlinear Equations	641
A-4	Matrices	631		Evaluating Integrals	642
	Scalar Multiplication and Matrix Addition	632		Fitting Curves to Data Sets	645
	Matrix Multiplication	632			
			INDEX		647