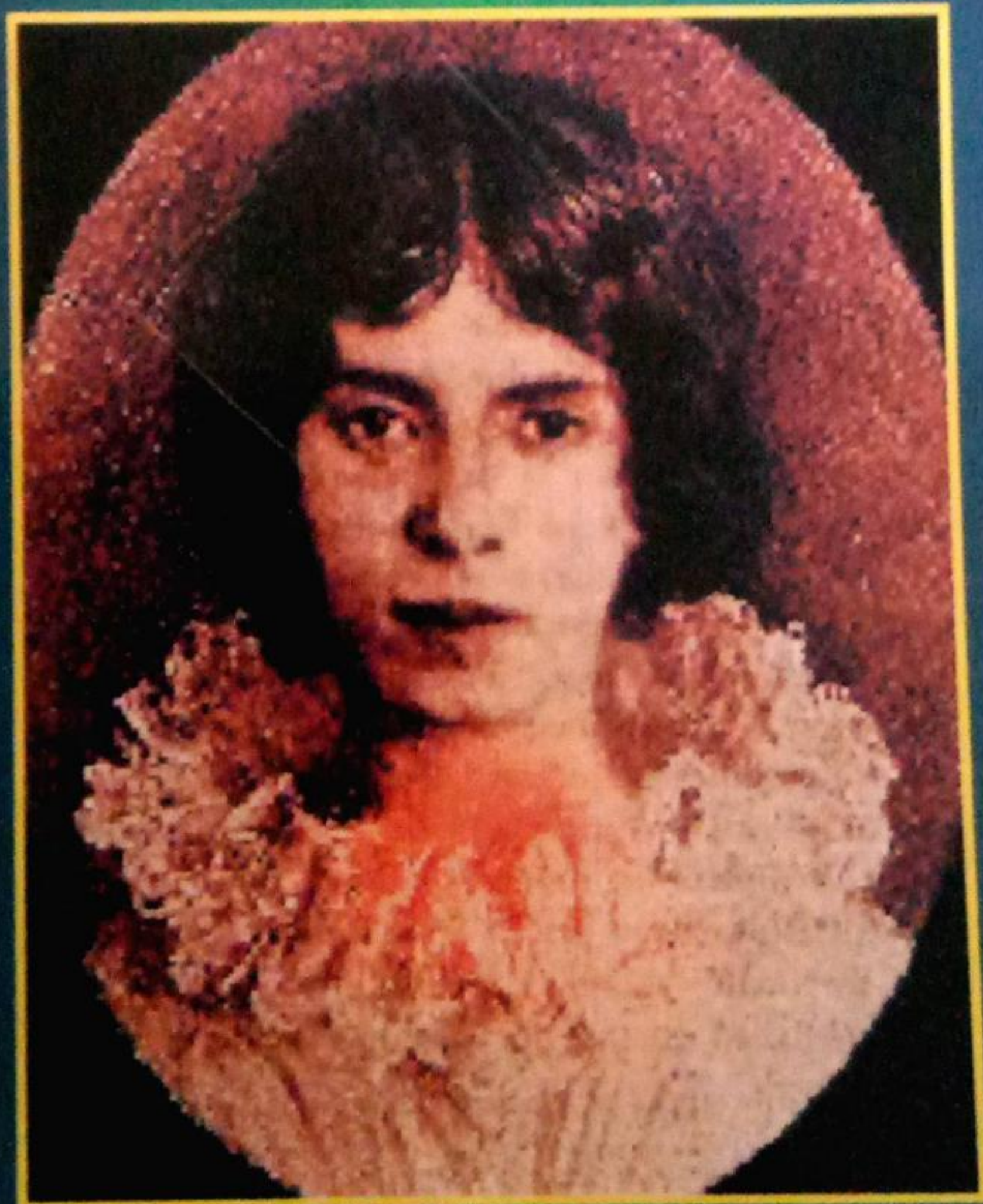


# EMILY DICKINSON

An Evaluation of Her Poetry

RAMJI LALL



RAMA BROTHERS



## CONTENTS

1. Emily Dickinson (1830-1886)—A Life-Sketch	1
2. Emily Dickinson As a Poet	8
3. The Theme of Love in Emily Dickinson's Poetry	27
4. Nature in Emily Dickinson's Poetry	39
5. The Theme of Pain and Suffering in Emily Dickinson's Poetry	47
6. The Theme of Death in Emily Dickinson's Poetry	53
7. The Theme of Immortality in Emily Dickinson's Poetry	57
8. Emily Dickinson As a Mystic Poet	63
9. Emily Dickinson's Poetic Theory	70
10. The Poetic Technique of Emily Dickinson	78
11. Emily Dickinson—An Appreciation	89
12. Detailed Consideration of Selected Poems with Their Text	94-160
1. <i>I Never Lost As Much But Twice</i> (49)	94
2. <i>Papa Above</i> (61)	95
3. <i>Success Is Counted Sweetest</i> (67)	95
4. <i>Just Lost, When I Was Saved</i> (160)	98
5. <i>I Taste A Liquor Never Brewed</i> (214)	99
6. <i>Safe In Their Alabaster Chambers</i> (216)	100
7. <i>"Hope" Is The Thing With Feathers</i> (254)	107
8. <i>There's A Certain Slant Of Light</i> (258)	108
9. <i>I Felt A Funeral, In My Brain</i> (280)	110
10. <i>The Soul Selects Her Own Society</i> (303)	113
11. <i>Before I Got My Eye Put Out</i> (327)	114
12. <i>A Bird Came Down The Walk</i> (328)	116
13. <i>After Great Pain, A Formal Feeling Comes</i> (341)	119
14. <i>She Lay As If At Play</i> (369)	123
15. <i>This Is My Letter To The World</i> (441)	124
16. <i>I Heard A Fly Buzz—When I Died</i> (465)	125
17. <i>To Hear An Oriole Sing</i> (526)	128



18. <i>A Thought Went Up My Mind Today</i> (701)	
19. <i>Because I Could Not Stop For Death</i> (712)	129
20. <i>Behind Me—Dips Eternity</i> (721)	130
21. <i>My Life Had Stood—A Loaded Gun</i> (754)	138
22. <i>These—Saw Visions</i> (758)	142
23. <i>A Light Exists In Spring</i> (812)	146
24. <i>A Narrow Fellow In The Grass</i> (986)	147
25. <i>Further In Summer Than The Birds</i> (1068)	149
26. <i>The Bustle In A House</i> (1078)	151
27. <i>The Last Night That She Lived</i> (1100)	153
28. <i>Tell All The Truth But Tell It Slant</i> (1129)	154
29. <i>A Route Of Evanescence</i> (1463)	156
30. <i>My Life Closed Twice Before Its Close</i> (1732)	157
31. <i>He Fumbles At Your Soul</i>	160
32. <i>I Dreaded that First Robin, So,</i>	161
33. <i>This World Is Not Conclusion</i>	162
34. <i>It Was Not Death, For I Stood Up</i>	164
13. Three Poems About Late Summer	166
	169

#### 14. Important Questions with Answers

Q. 1. Examine Emily Dickinson's treatment of the various themes she has dealt with in her poetry.

*Or*

Write a note on the thematic variety of Emily Dickinson's poetry.

172

Q. 2. Comment briefly on the style of Emily Dickinson with special reference to diction, metre, imagery, and metaphor.

*Or*

Write a note on the technical aspects of Emily Dickinson's poetry.

*Or*

What estimate have you formed of the poetic technique of Emily Dickinson ?

176



(ix)

Q. 3. Comment briefly on the lyrical intensity of Emily Dickinson's poetry.

*Or*

Write a note on Emily Dickinson's lyrical talent.

*Or*

What estimate of Emily Dickinson as a lyric poet have you formed ?

180

Q. 4. Supposing you had no other data besides her own poems, what impression of Emily Dickinson's personality as a woman and as an artist would you form ?

183

Q. 5. Write an essay on Emily Dickinson's treatment of Nature in her poetry.

*Or*

What estimate have you formed of Emily Dickinson as a Nature poet ?

187

Q. 6. Examine Emily Dickinson's view of immortality as expressed in her poetry.

*Or*

How far does Emily Dickinson appear in her poetry as a believer in immortality ?

192

Q. 7. Write a critical note on the mystical elements in the poetry of Emily Dickinson.

*Or*

Would you regard Emily Dickinson as a mystical poet ? Give reasons for your answer.

*Or*

What evidence, if any, of mysticism do you find in Emily Dickinson's poetry ?

195

Q. 8. Write an essay on the distinctive qualities of Emily Dickinson's poetry.

*Or*

Write a critical note on the poetic achievement of Emily Dickinson.

*Or*

Bring out the salient characteristics of the poetry of Emily Dickinson, illustrating them from the poems you have read.

199



(x)

Q. 9. "Emily Dickinson's poetry is a magnificent personal confession, blasphemous and, in its self-revelation, its honesty, almost obscene." Discuss.

*Or*

Emily Dickinson "was systematically adapting her own experience, which by common standards was a humdrum affair of little distinction, into the magnificent image at her soul which she has created in the poems". Discuss.

*Or*

"Her universe was that of the soul, her special task was to make that universe articulate". Discuss this in the light of Emily Dickinson's poetry.

204

Q. 10. Write a short critical essay on how Emily Dickinson has "charged her style with life".

*Or*

Emily Dickinson's "precision of vocabulary and condensed statement anticipated the twentieth century". Discuss.

*Or*

What are the main ingredients of Emily Dickinson's poetic style ? Illustrate your answer.

208

Q. 11. Write a brief analysis of the poem which appeals to you most in Emily Dickinson's work.

211

214

### Select Bibliography