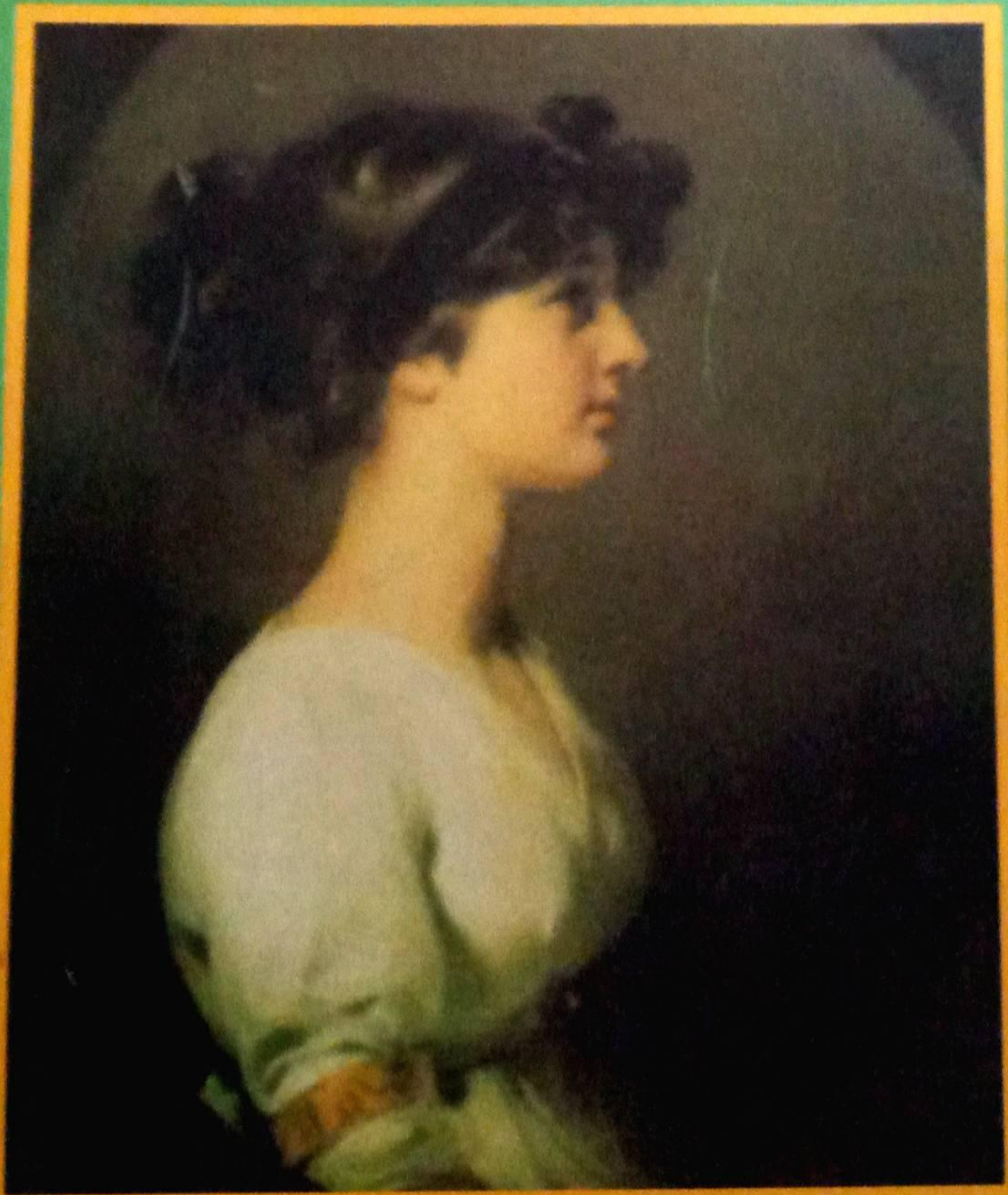


SP237

Jane Austen

EMMIA

A Critical Study by Dr. Raghukul Tilak



Surjeet Publications

Contents

<i>Chapters</i>	<i>Pages</i>
1. Social Background and The Setting	1—4
2. Literary Background: Brief Survey of the English Novel Upto Jane Austen	5—14
3. Life and Works of Jane Austen	15—20
4. English Novel : Jane Austen's Place and Contribution	21—28
5. Chief Novels of Jane Austen	29—47
6. Jane Austen's Range : Her Workmanship <i>Or</i> The Art of Jane Austen <i>Or</i> Jane's "Three Inches of Ivory"	48—51
7. An Estimate of Jane Austen as a Novelist <i>Or</i> Greatness and Contribution of Jane Austen as an Artist	52—56
8. Historical Background to "Emma"	57—58
9. Outline Story of "Emma"	59—64
10. 'Emma'—Introduction and Appreciation—Distinctive Features	65—70
11. The Character of Emma Woodhouse	71—77
12. Harriet Smith : Character and Role	78—80
13. Jane Fairfax : Character and Role	81—83
14. The Character and Role of Miss Bates	84—87
15. Mrs. Elton (Augusta Hawkins): Character and Role	88—90
16. George Knightley: Character and Role — Chief Qualities	91—95
17. Frank Churchill: Character and Role	96—98
18. Some Minor Characters	99—109

19. Detailed, Chapter-Wise Summary of "Emma" with Critical Comments 110—178
20. Select Textual Problems 179—228
1. "Emma" : A suitable and suggestive title.
Or
 "Highbury" : As a suitable title for the novel.
Or
 "Influence and interference" : An apt, suitable and suggestive Title. 179—184
2. "The basic theme of "Emma" is the education of its central figure."
Or
 "Emma Woodhouse in the beginning of the novel, is quite different from Emma in the end."
Or
 The various illusions and self-deceptions of Emma's character and the way in which they are overcome in the course of the novel.
Or
 Estimate of Emma's Character: "Vain, Conceited, Snobbish."
Or
 "The growth and development of Emma during the course of the novel."
Or
 " In the first half of the book and more, Emma is blind and wilfully conceited, but before the end, bitter experience has taught her to see herself and others as they are."
Or
 "Emma is quite modern in her snobbish know-all" attitude but she progresses by coming to realize the need for humility and guidance." 184—188
3. "The structure of 'Emma' is rhythmical."
Or
 Jane Austen's art of plot-construction with reference to 'Emma.'
Or
 "The formal perfection of 'Emma' lies in the skilful integration of theme and structure."
Or
 [ii]

- 188—190
- “Jane Austen’s use of repetitions and variations in the novel.”
4. Jane Austen’s use of irony in “Emma”.
- Or*
- “Emma” is the ironic portrait of a girl who falls into mild self-deception and whose trustworthy friend helps her out.”
- Or*
- “Emma” is the ironic story of a spoiled rich girl who is corrected by defeat and love.”
- Or*
- The tangle of human relationships in the novel and its ironic treatment.
- Or*
- “Emma” is Jane Austen’s ripest and most perfect love comedy.”
- Or*
- 190—198
- “Comedy in the novel arises from the incongruity between appearance and reality, between the surface appearance and the reality that lies beneath.”
5. Emma, her faults of character
- Or*
- 198—200
- “Emma is snobbish, self-willed, vain, conceited, self-deceived and over-confident.”
6. Emma: Art of Characterization.
- Or*
- 200—205
- Variety of characters in the novel (a) Introverted and extroverted characters (b) Static and Dynamic characters, (c) Concealed characters, and (d) minor figures.
7. The Theme. Appearance *Versus* reality.
- Or*
- 206—209
- “Things in the novel are not what they seem to be.”
8. The Theme: Marriage and Match-making.
- Or*
- 209—212
- “Emma is an inveterate Match-maker.”
9. The Theme : A study of human-relationships. 213—217
10. “Emma”: The Moral vision of Jane Austen.
- Or*
- “Jane Austen is a moralist, an 18th century moralist.”

- The Classical Elements in the Novel. 217—221
11. "Emma" realistic presentation of Highbury and its life. 217—221
Or
"Emma" : Jane Austen's realism.
Or
"Three or four families in a country village are the very thing to work on." 221—226
12. "Emma" : Fun and humour in the novel.
Or
Mr. Woodhouse, Mr. Elton, and Miss Bates as sources of humour.
Or
Emma's self-deceptions and illusions as sources of humour. 226—228
- Select Bibliography 228