



NAAC – SSR CYCLE II
1.4 Feedback System

1.4.1 Feedback Analysis & Process
Year: 2018-2019

MANOHAR MEMORIAL COLLEGE, FATEHABAD, HARYANA
Govt. Aided College Affiliated To Ch. Devi Lal University

STUDENTS FEEDBACK Academic Year : 2018-2019

PERCENTAGE

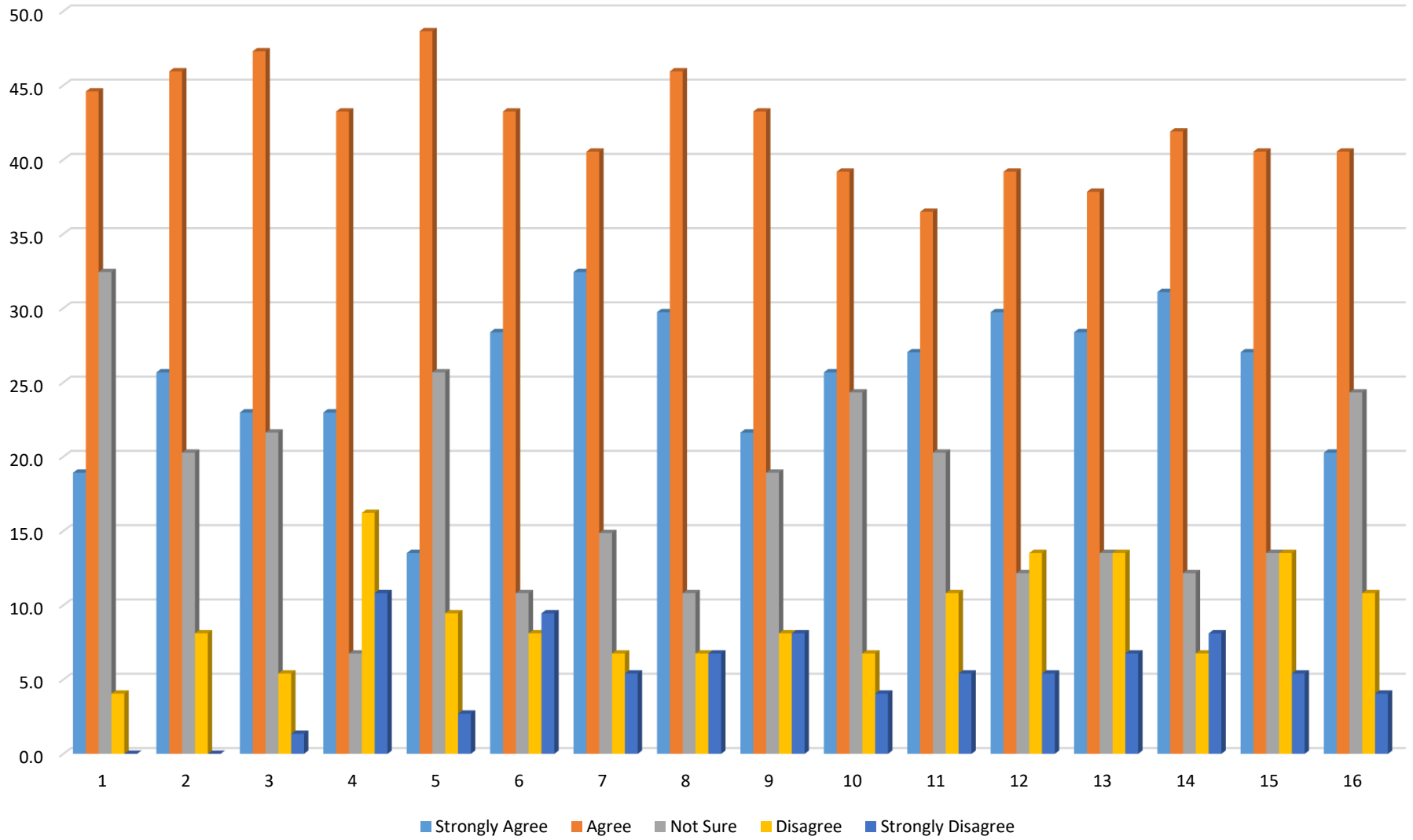
S.NO.	Parameters	Strongly agree	Agree	Not sure	Disagree	Strongly disagree
1	The curriculum is designed so as to enhance our employability	18.9	44.6	32.4	4.1	0.0
2	The courses studied by me are relevant and the contents are revised at reasonable intervals	25.7	45.9	20.3	8.1	0.0
3	The courses studies by me have enhanced my knowledge as well as my skills and my capabilities	23.0	47.3	21.6	5.4	1.4
4	The entire syllabus is completed in time	23.0	43.2	6.8	16.2	10.8
5	Modern teaching aids, power point presentation, web- recourse, multi-media, e-content etc. are used by most of teachers while teaching	13.5	48.6	25.7	9.5	2.7
6	The teachers guides the students for overall personally development of the students.	28.4	43.2	10.8	8.1	9.5

7	The teachers provide the students opportunities to learn and grow.	32.4	40.5	14.9	6.8	5.4
8	The teachers give regular and timely feedback on the performance of the students	29.7	45.9	10.8	6.8	6.8
9	The assessment and evaluation process is fair and unbiased	21.6	43.2	18.9	8.1	8.1
10	The teachers take efforts to inculcate soft skills in the students	25.7	39.2	24.3	6.8	4.1
11	The teachers take efforts to enhance employability skills the students	27.0	36.5	20.3	10.8	5.4
12	The teachers encourage the students to participate in extra-curricular and co-curricular activities	29.7	39.2	12.2	13.5	5.4
13	The teacher to encourage the students to use reference books, e-resources, e-journals etc.	28.4	37.8	13.5	13.5	6.8
14	The teachers keep the students updated about the latest development in the subject/ area of knowledge	31.1	41.9	12.2	6.8	8.1
15	The teachers take active interest in arranging field visits , study tours etc. for enhancing learning	27.0	40.5	13.5	13.5	5.4
16	The teachers usually do necessary follow up with a task assigned to their mentee	20.3	40.5	24.3	10.8	4.1

No of Respondents: 74

Sampling method: RANDOM SAMPLING

Session : 2018-19





NAAC – SSR CYCLE II
1.4 Feedback System

1.4.1 Feedback Analysis & Process
Year: 2018-2019

MANOHAR MEMORIAL COLLEGE, FATEHABAD, HARYANA
Govt. Aided College Affiliated To Ch. Devi Lal University

FEEDBACK OF ALUMNI ACADEMIC YEAR : 2018-2019

PERCENTAGE

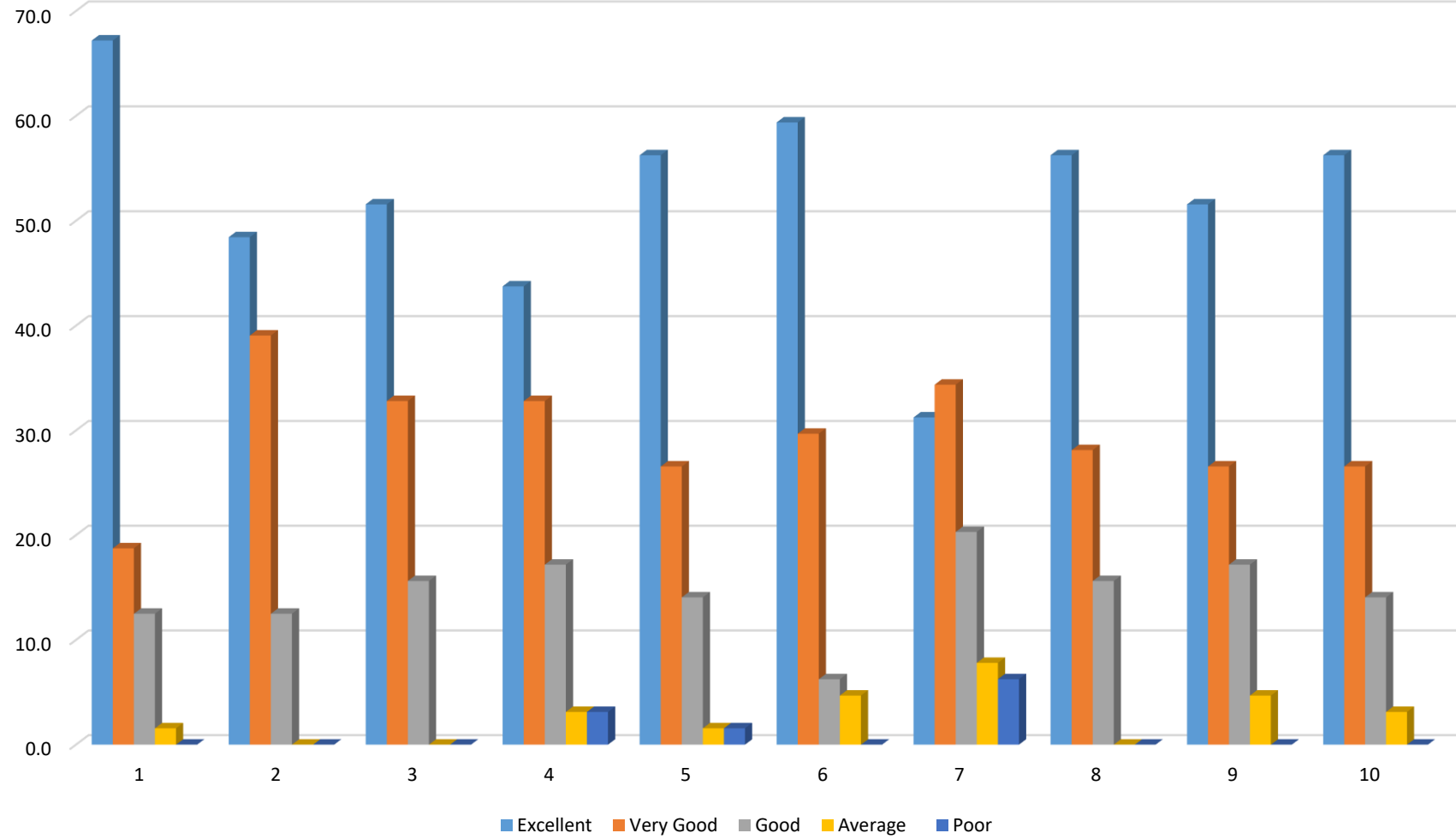
S.NO.	Parameters	Excellent	Very Good	Good	Average	Poor
1	How do you rate the course that you have learnt in the college in relation to your current job/ occupation?	67.2	18.8	12.5	1.6	0.0
2	Infrastructure and Lab facilities	48.4	39.1	12.5	0.0	0.0
3	Faculty	51.6	32.8	15.6	0.0	0.0
4	Canteen Facilities	43.8	32.8	17.2	3.1	3.1
5	Library:	56.3	26.6	14.1	1.6	1.6

6	Office staff	59.4	29.7	6.3	4.7	0.0
7	Hostel Facilities	31.3	34.4	20.3	7.8	6.3
8	Educational Resources	56.3	28.1	15.6	0.0	0.0
9	Admission Procedure	51.6	26.6	17.2	4.7	0.0
10	Overall Rating of the College	56.3	26.6	14.1	3.1	0.0

No of Respondents:64

Sampling method: RANDOM SAMPLING

Session: 2018-19





NAAC – SSR CYCLE II
1.4 Feedback System

1.4.1 Feedback Analysis & Process
Year: 2018-2019

MANOHAR MEMORIAL COLLEGE, FATEHABAD, HARYANA
Govt. Aided College Affiliated To Ch. Devi Lal University

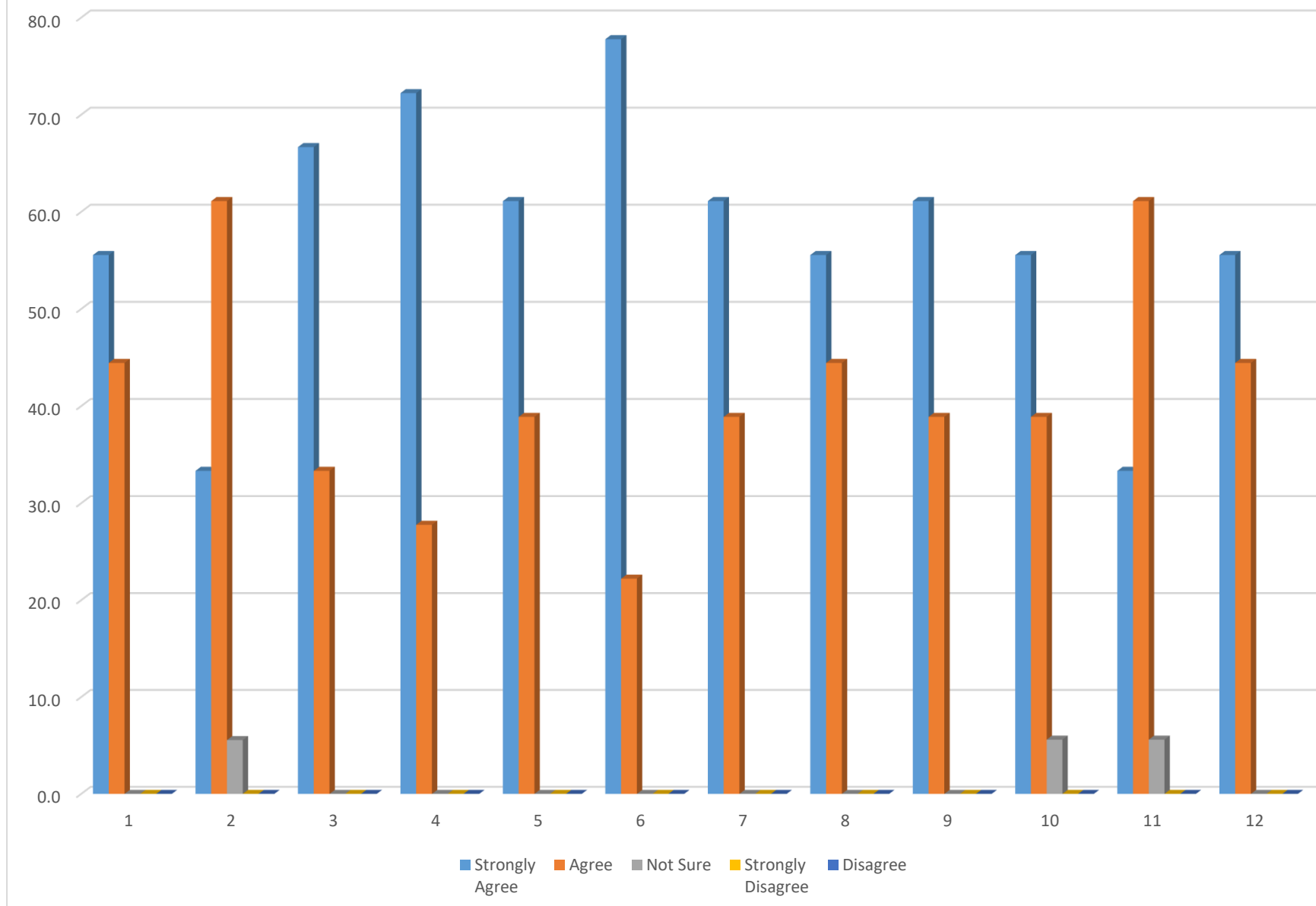
TEACHERS FEEDBACK Academic Year : 2018-2019		PERCENTAGE				
S.NO.	Parameters	Strongly agree	Agree	Not sure	Disagree	Strongly disagree
1	The objective of the syllabi are well defined.	55.6	44.4	0.0	0.0	0.0
2	The books/journals etc. prescribed/listed as reference material are relevant, updated and cover the entire syllabi.	33.3	61.1	5.6	0.0	0.0
3	The courses/syllabi of the students taught by me increased my interest, knowledge and perspective in the subject area.	66.7	33.3	0.0	0.0	0.0
4	The college has given me full freedom to adopt new techniques/strategies of teaching such as group discussions, seminar presentations and learners participation.	72.2	27.8	0.0	0.0	0.0
5	Tests and examinations are conducted well in time with proper coverage of all units in the syllabus.	61.1	38.9	0.0	0.0	0.0
6	The environment in the college is conducive is teaching and research.	77.8	22.2	0.0	0.0	0.0

7	The administration is teacher friendly.	61.1	38.9	0.0	0.0	0.0
8	The college provides adequate opportunities and support to faculty members for upgrading their skills and qualifications.	55.6	44.4	0.0	0.0	0.0
9	ICT facilities in the college are adequate and satisfactory.	61.1	38.9	0.0	0.0	0.0
10	Separate space in college canteen is available for teachers.	55.6	38.9	5.6	0.0	0.0
11	Toilets/washroom are clean and properly maintained.	33.3	61.1	5.6	0.0	0.0
12	The classroom are clean and well maintained.	55.6	44.4	0.0	0.0	0.0

No of Respondents:18

Sampling method: RANDOM SAMPLING

Session: 2018-19





NAAC – SSR CYCLE II
1.4 Feedback System

1.4.1 Feedback Analysis & Process
Year: 2019-2020

MANOHAR MEMORIAL COLLEGE, FATEHABAD, HARYANA
Govt. Aided College Affiliated To Ch. Devi Lal University

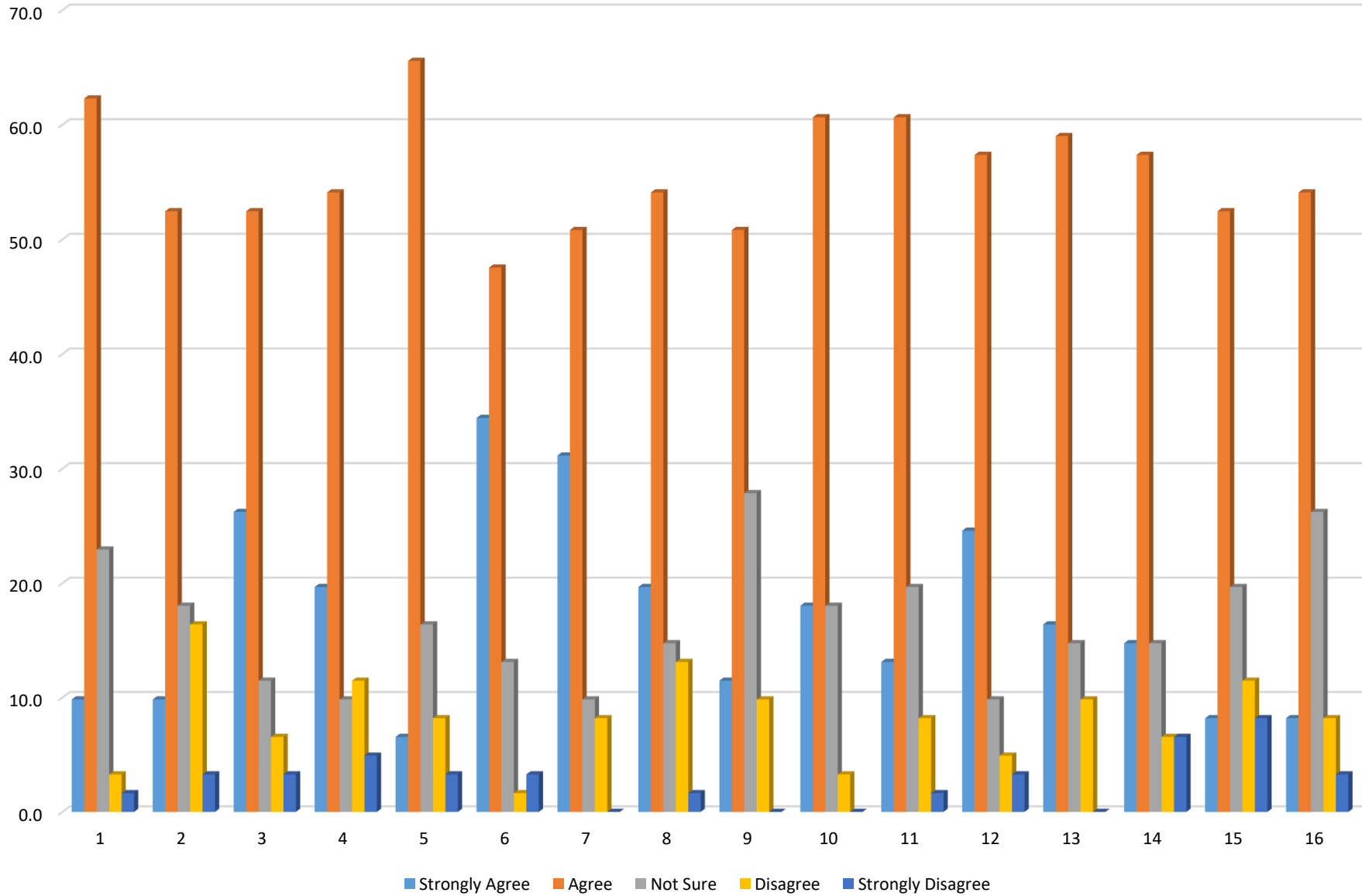
STUDENTS FEEDBACK Academic Year : 2019-2020		PERCENTAGE				
S.NO.	Parameters	Strongly agree	Agree	Not sure	Disagree	Strongly disagree
1	The curriculum is designed so as to enhance our employability	9.8	62.3	23.0	3.3	1.6
2	The courses studied by me are relevant and the contents are revised at reasonable intervals	9.8	52.5	18.0	16.4	3.3
3	The courses studies by me have enhanced my knowledge as well as my skills and my capabilities	26.2	52.5	11.5	6.6	3.3
4	The entire syllabus is completed in time	19.7	54.1	9.8	11.5	4.9
5	Modern teaching aids, power point presentation, web- recourse, multi-media, e-content etc. are used by most of teachers while teaching	6.6	65.6	16.4	8.2	3.3

6	The teachers guides the students for overall personally development of the students.	34.4	47.5	13.1	1.6	3.3
7	The teachers provide the students opportunities to learn and grow.	31.1	50.8	9.8	8.2	0.0
8	The teachers give regular and timely feedback on the performance of the students	19.7	54.1	14.8	13.1	1.6
9	The assessment and evaluation process is fair and unbiased	11.5	50.8	27.9	9.8	0.0
10	The teachers take efforts to inculcate soft skills in the students	18.0	60.7	18.0	3.3	0.0
11	The teachers take efforts to enhance employability skills the students	13.1	60.7	19.7	8.2	1.6
12	The teachers encourage the students to participate in extra- curricular and co-curricular activities	24.6	57.4	9.8	4.9	3.3
13	The teacher to encourage the students to use reference books, e-resources, e-journals etc.	16.4	59.0	14.8	9.8	0.0
14	The teachers keep the students updated about the latest development in the subject/ area of knowledge	14.8	57.4	14.8	6.6	6.6
15	The teachers take active interest in arranging field visits , study tours etc. for enhancing learning	8.2	52.5	19.7	11.5	8.2
16	The teachers usually do necessary follow up with a task assigned to their mentee	8.2	54.1	26.2	8.2	3.3

No of Respondents: 61

SAMPLING method: RANDOM SAMPLING

Session : 2019-20





NAAC – SSR CYCLE II
1.4 Feedback System

1.4.1 Feedback Analysis & Process
Year: 2019-2020

MANOHAR MEMORIAL COLLEGE, FATEHABAD, HARYANA
Govt. Aided College Affiliated To Ch. Devi Lal University

FEEDBACK OF ALUMNI ACADEMIC YEAR : 2019-2020

PERCENTAGE

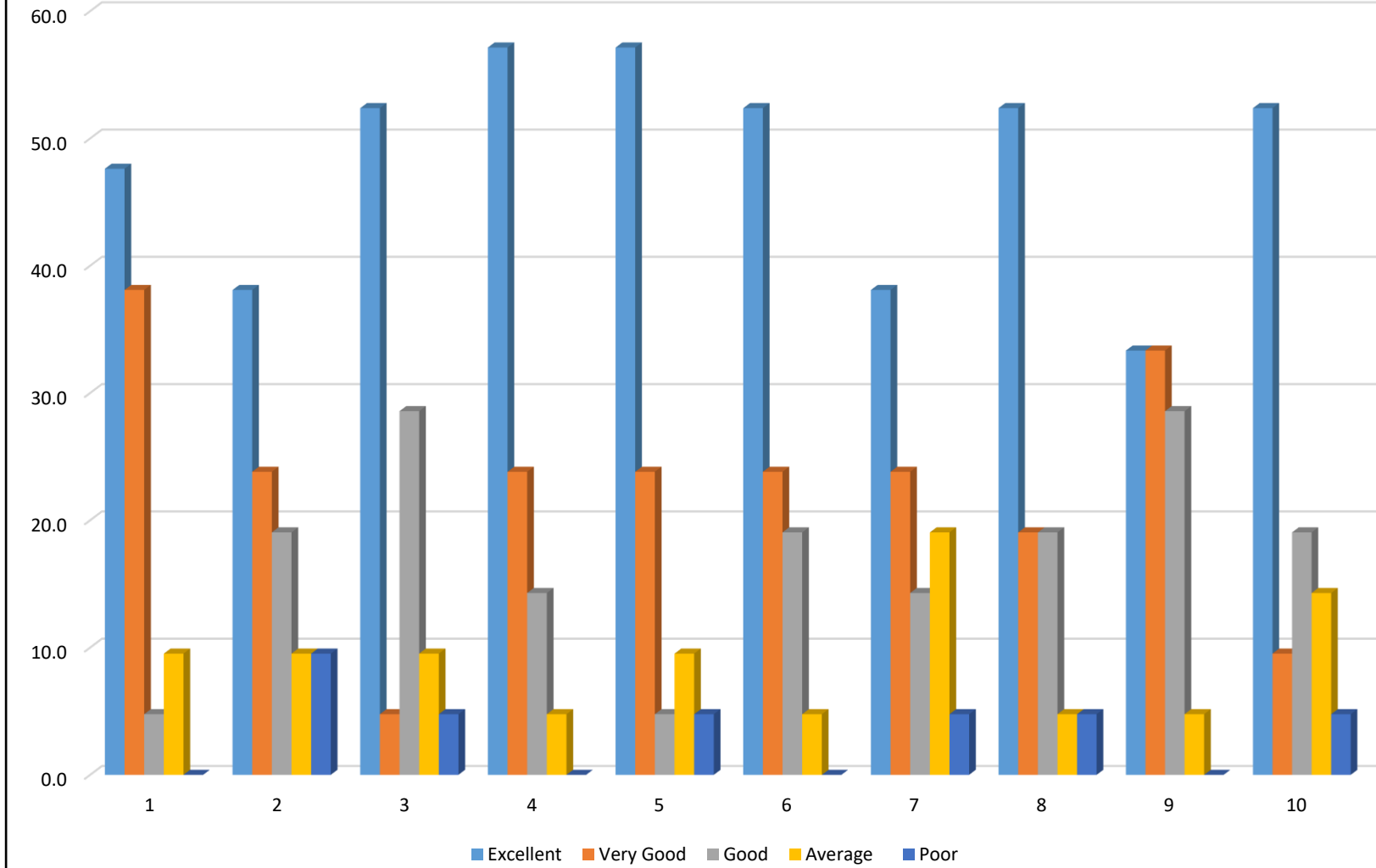
S.NO.	Parameters	Excellent	Very Good	Good	Average	Poor
1	How do you rate the course that you have learnt in the college in relation to your current job/ occupation?	47.6	38.1	4.8	9.5	0.0
2	Infrastructure and Lab facilities	38.1	23.8	19.0	9.5	9.5
3	Faculty	52.4	4.8	28.6	9.5	4.8
4	Canteen Facilities	57.1	23.8	14.3	4.8	0.0
5	Library:	57.1	23.8	4.8	9.5	4.8

6	Office staff	52.4	23.8	19.0	4.8	0.0
7	Hostel Facilities	38.1	23.8	14.3	19.0	4.8
8	Educational Resources	52.4	19.0	19.0	4.8	4.8
9	Admission Procedure	33.3	33.3	28.6	4.8	0.0
10	Overall Rating of the College	52.4	9.5	19.0	14.3	4.8

No of Respondents:21

Sampling method: RANDOM SAMPLING

Session: 2019-20





NAAC – SSR CYCLE II
1.4 Feedback System

1.4.1 Feedback Analysis & Process
Year: 2019-2020

MANOHAR MEMORIAL COLLEGE, FATEHABAD, HARYANA
Govt. Aided College Affiliated To Ch. Devi Lal University

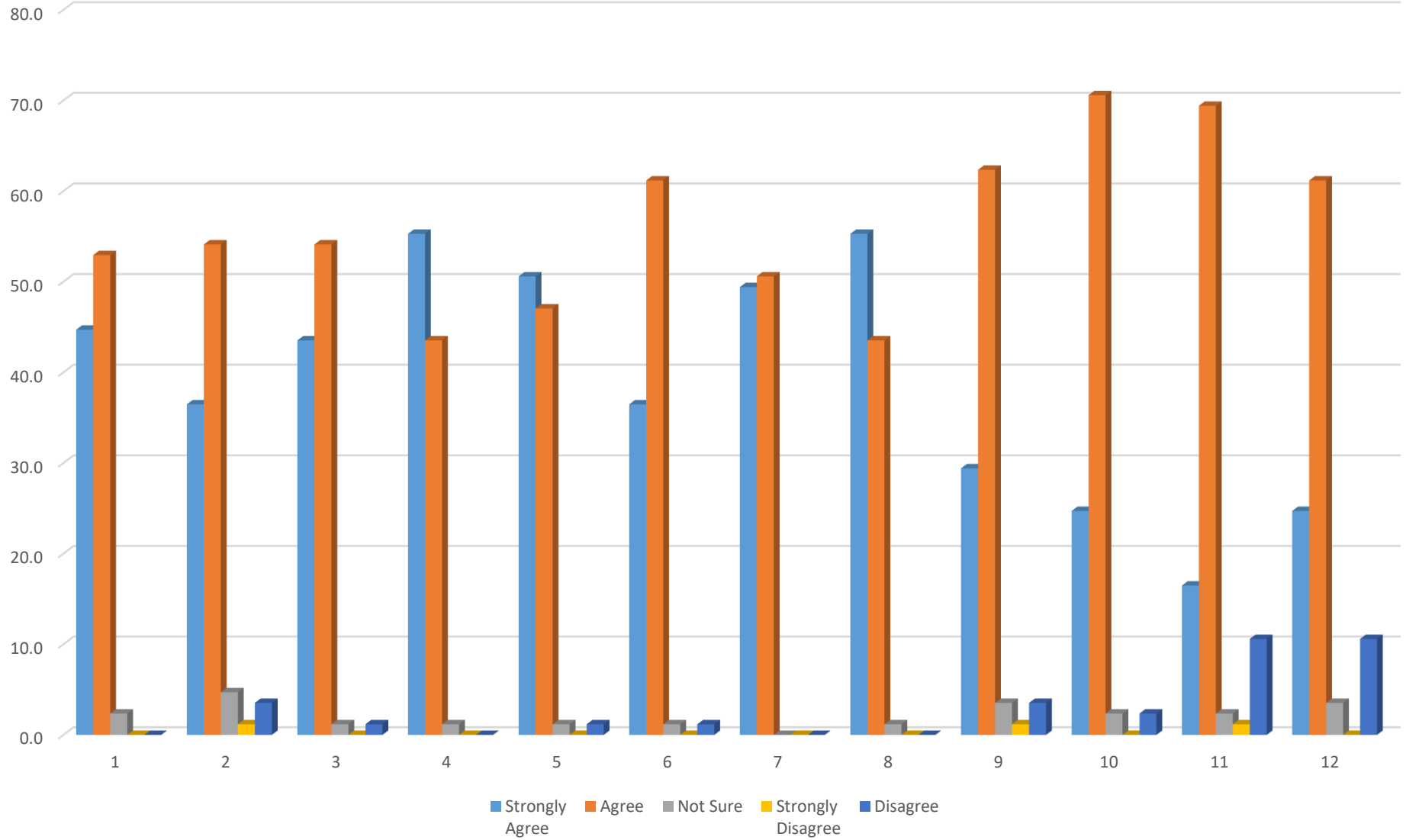
TEACHERS FEEDBACK Academic Year : 2019-2020		PERCENTAGE				
S.NO.	Parameters	Strongly agree	Agree	Not sure	Disagree	Strongly disagree
1	The objective of the syllabi are well defined.	44.7	52.9	2.4	0.0	0.0
2	The books/journals etc. prescribed/listed as reference material are relevant, updated and cover the entire syllabi.	36.5	54.1	4.7	1.2	3.5
3	The courses/syllabi of the students taught by me increased my interest, knowledge and perspective in the subject area.	43.5	54.1	1.2	0.0	1.2
4	The college has given me full freedom to adopt new techniques/strategies of teaching such as group discussions, seminar presentations and learners participation.	55.3	43.5	1.2	0.0	0.0
5	Tests and examinations are conducted well in time with proper coverage of all units in the syllabus.	50.6	47.1	1.2	0.0	1.2

6	The environment in the college is conducive is teaching and research.	36.5	61.2	1.2	0.0	1.2
7	The administration is teacher friendly.	49.4	50.6	0.0	0.0	0.0
8	The college provides adequate opportunities and support to faculty members for upgrading their skills and qualifications.	55.3	43.5	1.2	0.0	0.0
9	ICT facilities in the college are adequate and satisfactory.	29.4	62.4	3.5	1.2	3.5
10	Separate space in college canteen is available for teachers.	24.7	70.6	2.4	0.0	2.4
11	Toilets/washroom are clean and properly maintained.	16.5	69.4	2.4	1.2	10.6
12	The classroom are clean and well maintained.	24.7	61.2	3.5	0.0	10.6

No of Respondents: 85

SAMPLING method: RANDOM SAMPLING

Session: 2019-20





NAAC – SSR CYCLE II
1.4 Feedback System

1.4.1 Feedback Analysis & Process
Year: 2020-2021

MANOHAR MEMORIAL COLLEGE, FATEHABAD, HARYANA
Govt. Aided College Affiliated To Ch. Devi Lal University

STUDENTS FEEDBACK Academic Year 2020-2021

PERCENTAGE

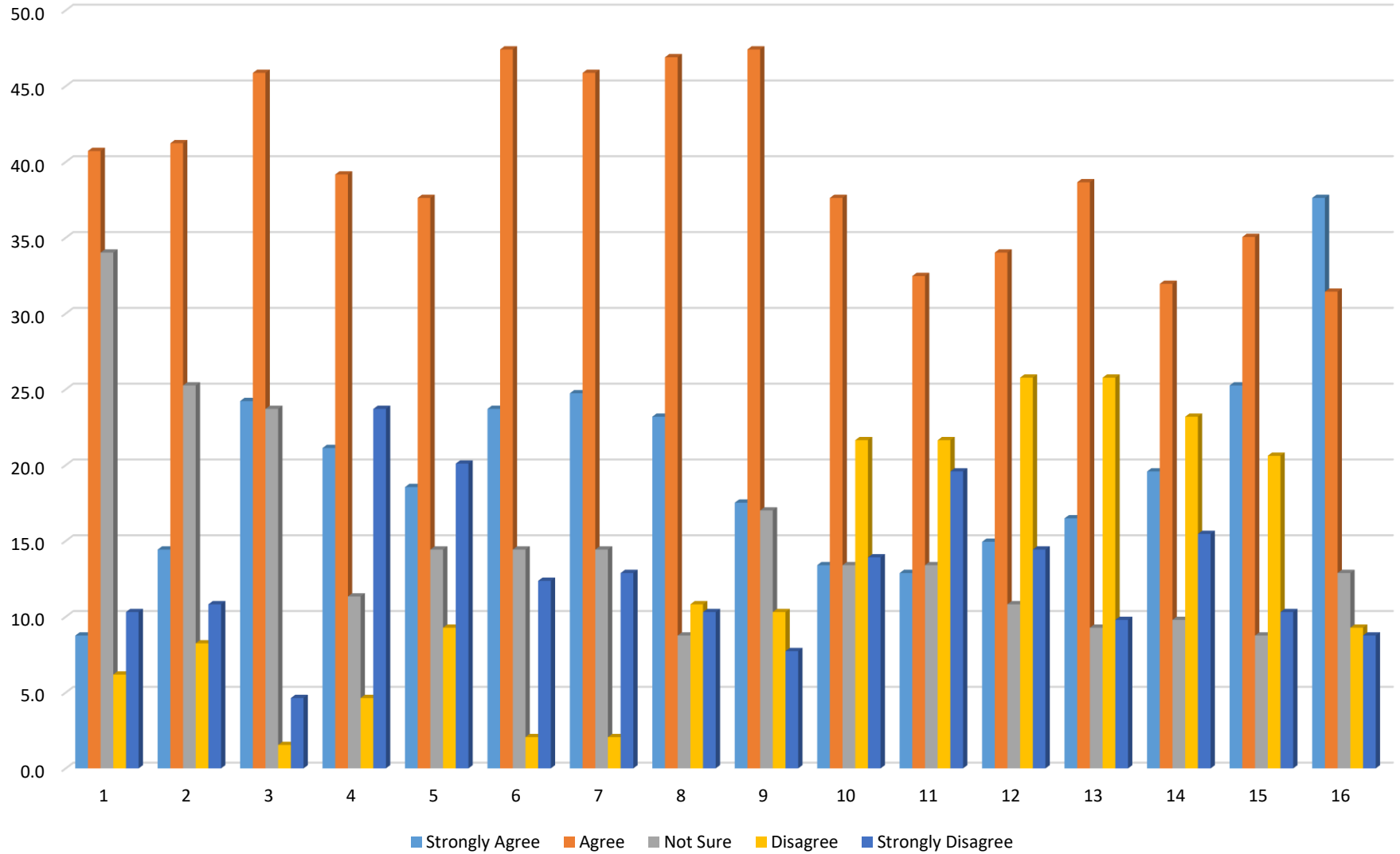
S.NO.	Parameters	Strongly agree	Agree	Not sure	Disagree	Strongly disagree
1	The curriculum is designed so as to enhance our employability	8.8	40.7	34.0	6.2	10.3
2	The courses studied by me are relevant and the contents are revised at reasonable intervals	14.4	41.2	25.3	8.2	10.8
3	The courses studies by me have enhanced my knowledge as well as my skills and my capabilities	24.2	45.9	23.7	1.5	4.6
4	The entire syllabus is completed in time	21.1	39.2	11.3	4.6	23.7
5	Modern teaching aids, power point presentation, web- recourse, multi-media, e-content etc. are used by most of teachers while teaching	18.6	37.6	14.4	9.3	20.1

6	The teachers guides the students for overall personally development of the students.	23.7	47.4	14.4	2.1	12.4
7	The teachers provide the students opportunities to learn and grow.	24.7	45.9	14.4	2.1	12.9
8	The teachers give regular and timely feedback on the performance of the students	23.2	46.9	8.8	10.8	10.3
9	The assessment and evaluation process is fair and unbiased	17.5	47.4	17.0	10.3	7.7
10	The teachers take efforts to inculcate soft skills in the students	13.4	37.6	13.4	21.6	13.9
11	The teachers take efforts to enhance employability skills the students	12.9	32.5	13.4	21.6	19.6
12	The teachers encourage the students to participate in extra- curricular and co-curricular activities	14.9	34.0	10.8	25.8	14.4
13	The teacher to encourage the students to use reference books, e-resources, e-journals etc.	16.5	38.7	9.3	25.8	9.8
14	The teachers keep the students updated about the latest development in the subject/ area of knowledge	19.6	32.0	9.8	23.2	15.5
15	The teachers take active interest in arranging field visits , study tours etc. for enhancing learning	25.3	35.1	8.8	20.6	10.3
16	The teachers usually do necessary follow up with a task assigned to their mentee	37.6	31.4	12.9	9.3	8.8

No of Respondents:194

Sampling method: RANDOM SAMPLING

Session : 2020-21





NAAC – SSR CYCLE II
1.4 Feedback System

1.4.1 Feedback Analysis & Process
Year: 2020-2021

MANOHAR MEMORIAL COLLEGE, FATEHABAD, HARYANA
Govt. Aided College Affiliated To Ch. Devi Lal University

FEEDBACK OF ALUMNI ACADEMIC YEAR : 2020-2021

PERCENTAGE

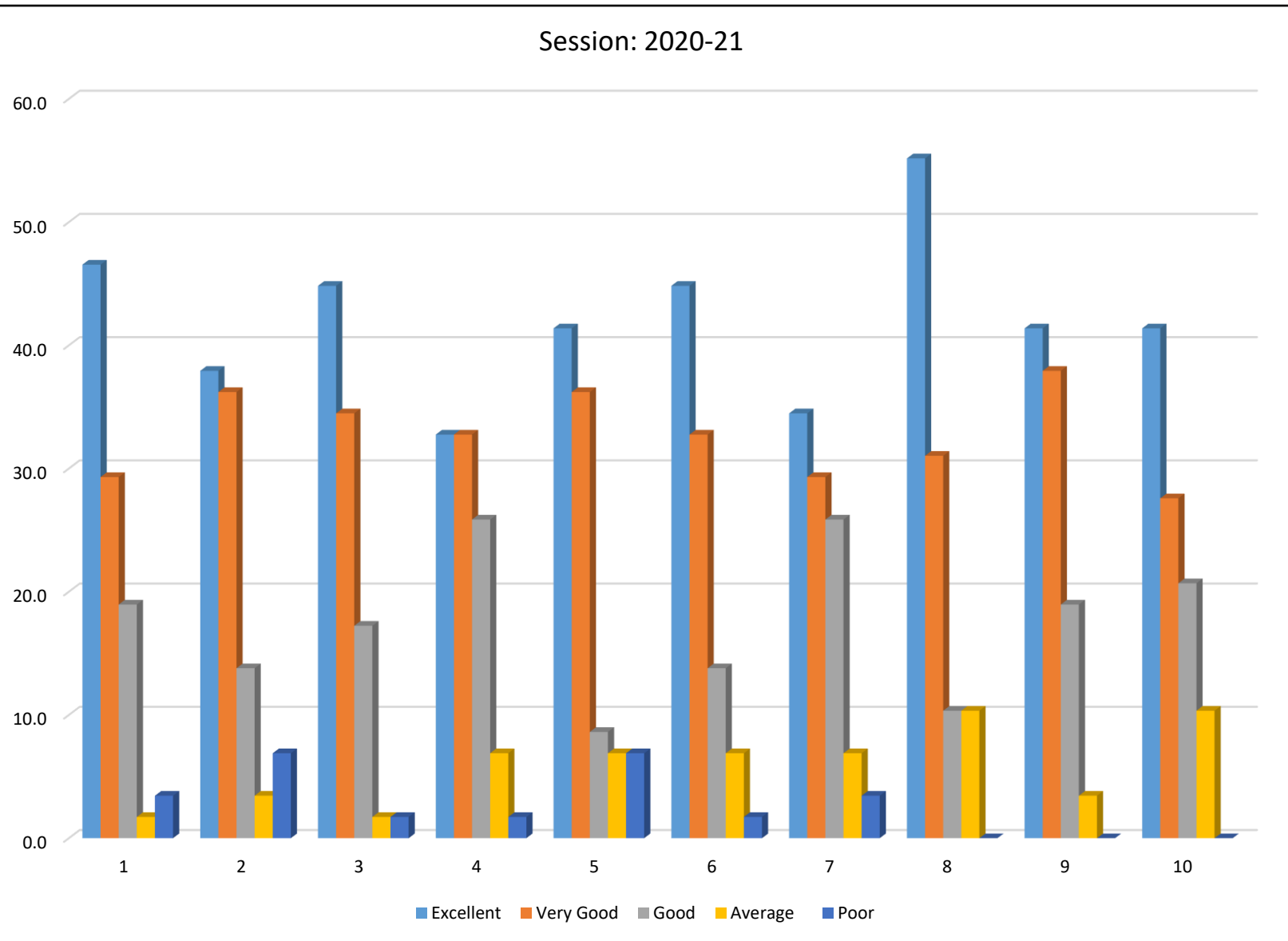
S.NO.	Parameters	Excellent	Very Good	Good	Average	Poor
1	How do you rate the course that you have learnt in the college in relation to your current job/ occupation?	46.6	29.3	19.0	1.7	3.4
2	Infrastructure and Lab facilities	37.9	36.2	13.8	3.4	6.9
3	Faculty	44.8	34.5	17.2	1.7	1.7
4	Canteen Facilities	32.8	32.8	25.9	6.9	1.7
5	Library:	41.4	36.2	8.6	6.9	6.9

6	Office staff	44.8	32.8	13.8	6.9	1.7
7	Hostel Facilities	34.5	29.3	25.9	6.9	3.4
8	Educational Resources	55.2	31.0	10.3	10.3	0.0
9	Admission Procedure	41.4	37.9	19.0	3.4	0.0
10	Overall Rating of the College	41.4	27.6	20.7	10.3	0.0

No of Respondents:58

Sampling method: RANDOM SAMPLING

Session: 2020-21





NAAC – SSR CYCLE II
1.4 Feedback System

1.4.1 Feedback Analysis & Process
Year: 2020-2021

MANOHAR MEMORIAL COLLEGE, FATEHABAD, HARYANA
Govt. Aided College Affiliated To Ch. Devi Lal University

TEACHERS FEEDBACK Academic Year 2020-2021

PERCENTAGE

S.NO.	Parameters	Strongly agree	Agree	Not sure	Disagree	Strongly disagree
1	The objective of the syllabi are well defined.	63.6	36.4	0.0	0.0	0.0
2	The books/journals etc. prescribed/listed as reference material are relevant, updated and cover the entire syllabi.	45.5	50.0	4.5	0.0	0.0
3	The courses/syllabi of the students taught by me increased my interest, knowledge and perspective in the subject area.	45.5	54.5	0.0	0.0	0.0
4	The college has given me full freedom to adopt new techniques/strategies of teaching such as group discussions, seminar presentations and learners participation.	59.1	40.9	0.0	0.0	0.0
5	Tests and examinations are conducted well in time with proper coverage of all units in the syllabus.	59.1	36.4	0.0	0.0	0.0

6	The environment in the college is conducive is teaching and research.	31.8	68.2	0.0	0.0	0.0
7	The administration is teacher friendly.	40.9	59.1	0.0	0.0	0.0
8	The college provides adequate opportunities and support to faculty members for upgrading their skills and qualifications.	63.6	31.8	4.5	0.0	0.0
9	ICT facilities in the college are adequate and satisfactory.	59.1	40.9	0.0	0.0	0.0
10	Separate space in college canteen is available for teachers.	50.0	45.5	0.0	0.0	0.0
11	Toilets/washroom are clean and properly maintained.	27.3	63.6	9.090909	0.0	0.0
12	The classroom are clean and well maintained.	36.4	63.6	0	0.0	0.0

No of Respondents: 22

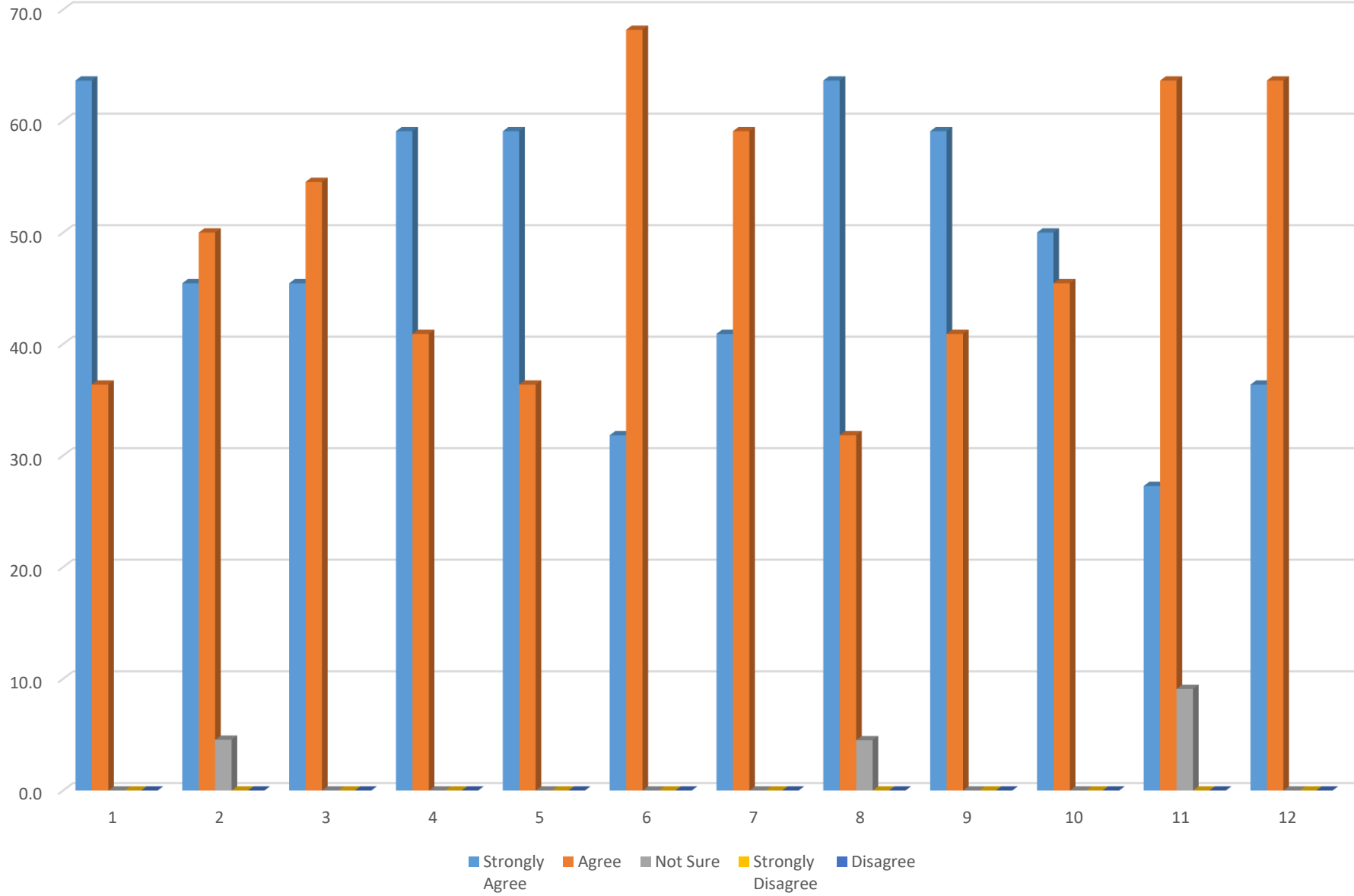
Sampling method: RANDOM SAMPLING

ACTION TAKEN REPORT

Based on the feedback of session 2020-21, the action taken is illustrated in the following table:

Sr. No.	Suggestions	Observation /Source	Action Taken
1	More emphasis on Skill oriented Courses	Feedback from Students	Five Skill based UGC sponsored certificate courses under NSQF are introduced
2	Modern Teaching Aids LCD projectors, Web sources, e-Content	Feedback from Students and teachers	Three LCD projectors are purchased and installed during this session. Also 4 desktop computers with latest configuration purchased.
3	Mentoring of Students	Feedback by Teachers	Regular Teachers are appointed as Mentors to students regarding career and motivational guidance.
4	Extra-curricular activities	Feedback from Students	College is continuously making efforts to hosting youth festival, university sports meet and literary events in next session.
5	Alumni meets through alumni Association	Feedback from Alumni	Alumni association of College registered under Society registration act and online alumni meet organized and convocation organized in March 2021.
6	Suggestion to promote Work Environment for Team Work	Verbal Feedback from Parents	Formal Instructions were circulated to all faculty members to ensure promotion of work environment in the team work. Positive results of working in a team work are visible

Session: 2020-21





NAAC – SSR CYCLE II
1.4 Feedback System

1.4.1 Feedback Analysis & Process
Year: 2021-2022

MANOHAR MEMORIAL COLLEGE, FATEHABAD, HARYANA
Govt. Aided College Affiliated To Ch. Devi Lal University

STUDENTS FEEDBACK Academic Year 2021-2022

PERCENTAGE

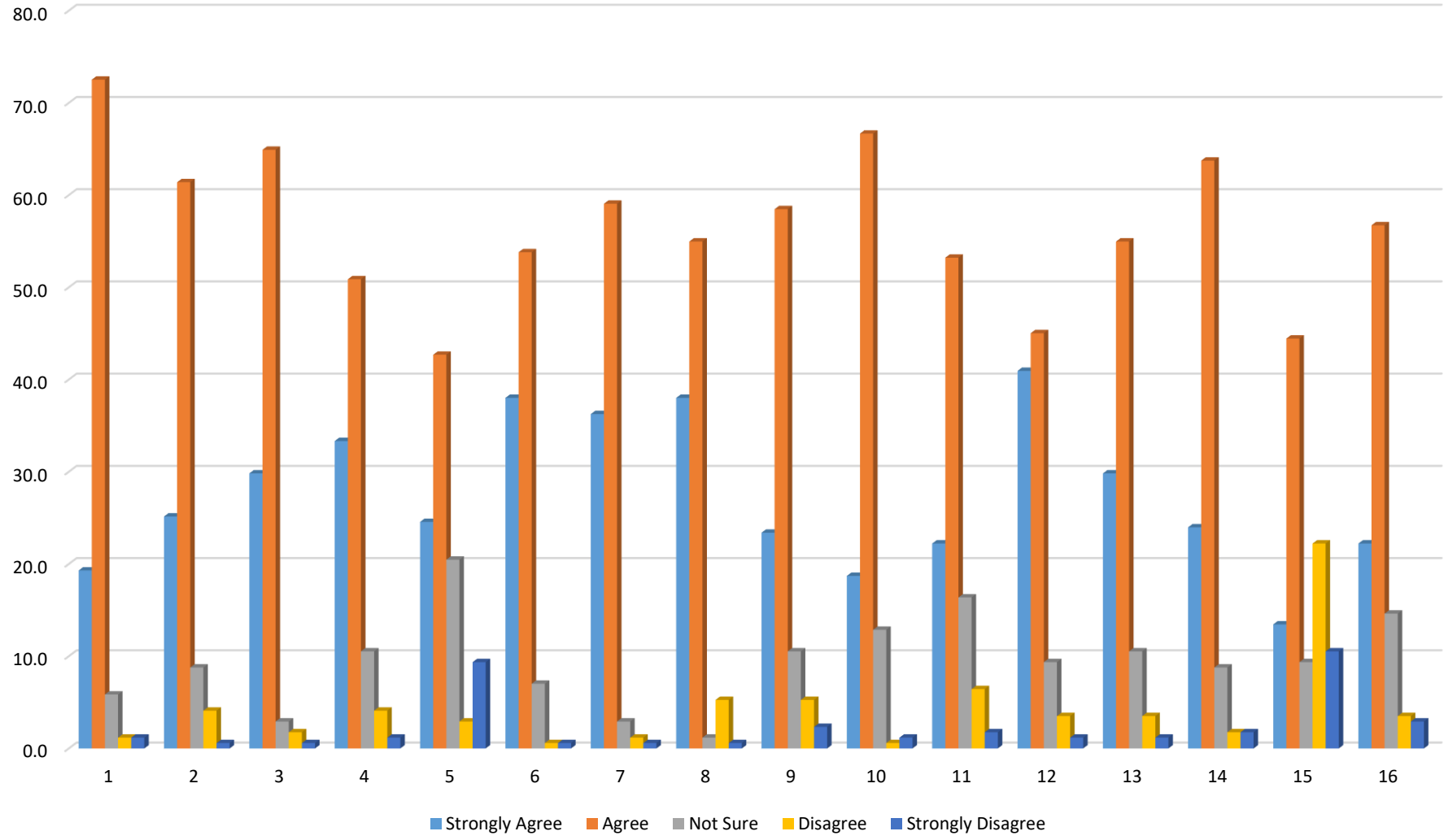
S.NO.	Parameters	Strongly agree	Agree	Not sure	Disagree	Strongly disagree
1	The curriculum is designed so as to enhance our employability	19.3	72.5	5.8	1.2	1.2
2	The courses studied by me are relevant and the contents are revised at reasonable intervals	25.1	61.4	8.8	4.1	0.6
3	The courses studies by me have enhanced my knowledge as well as my skills and my capabilities	29.8	64.9	2.9	1.8	0.6
4	The entire syllabus is completed in time	33.3	50.9	10.5	4.1	1.2
5	Modern teaching aids, power point presentation, web- recourse, multi-media, e-content etc. are used by most of teachers while teaching	24.6	42.7	20.5	2.9	9.4

6	The teachers guides the students for overall personally development of the students.	38.0	53.8	7.0	0.6	0.6
7	The teachers provide the students opportunities to learn and grow.	36.3	59.1	2.9	1.2	0.6
8	The teachers give regular and timely feedback on the performance of the students	38.0	55.0	1.2	5.3	0.6
9	The assessment and evaluation process is fair and unbiased	23.4	58.5	10.5	5.3	2.3
10	The teachers take efforts to inculcate soft skills in the students	18.7	66.7	12.9	0.6	1.2
11	The teachers take efforts to enhance employability skills the students	22.2	53.2	16.4	6.4	1.8
12	The teachers encourage the students to participate in extra- curricular and co-curricular activities	40.9	45.0	9.4	3.5	1.2
13	The teacher to encourage the students to use reference books, e-resources, e-journals etc.	29.8	55.0	10.5	3.5	1.2
14	The teachers keep the students updated about the latest development in the subject/ area of knowledge	24.0	63.7	8.8	1.8	1.8
15	The teachers take active interest in arranging field visits , study tours etc. for enhancing learning	13.5	44.4	9.4	22.2	10.5
16	The teachers usually do necessary follow up with a task assigned to their mentee	22.2	56.7	14.6	3.5	2.9

No of Respondents:171

Sampling method: RANDOM SAMPLING

Session : 2021-22





NAAC – SSR CYCLE II
1.4 Feedback System

1.4.1 Feedback Analysis & Process
Year: 2021-2022

MANOHAR MEMORIAL COLLEGE, FATEHABAD, HARYANA
Govt. Aided College Affiliated To Ch. Devi Lal University

FEEDBACK OF ALUMNI ACADEMIC YEAR : 2021-2022

PERCENTAGE

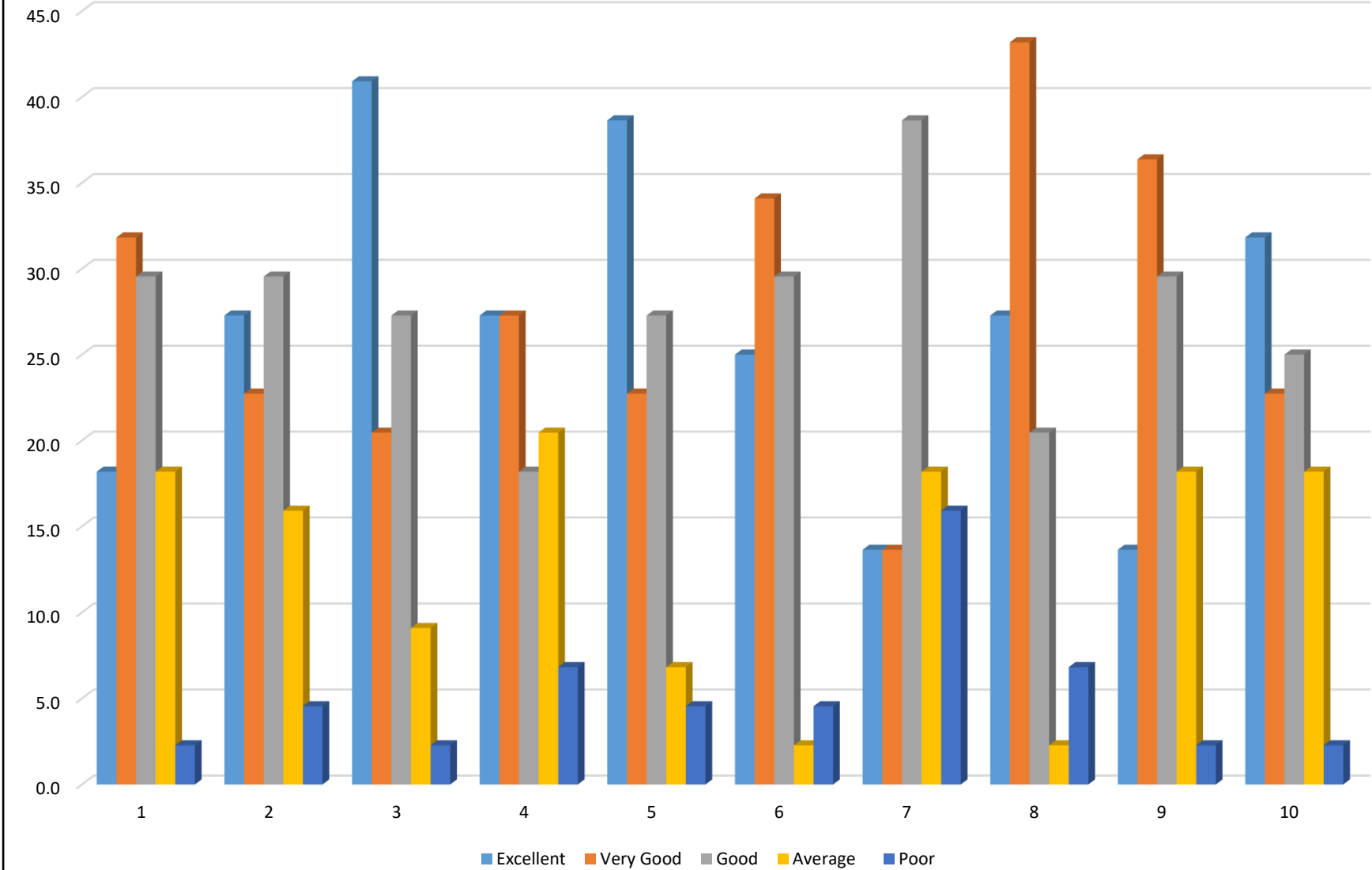
S.NO.	Parameters	Excellent	Very Good	Good	Average	Poor
1	How do you rate the course that you have learnt in the college in relation to your current job/ occupation?	18.2	31.8	29.5	18.2	2.3
2	Infrastructure and Lab facilities	27.3	22.7	29.5	15.9	4.5
3	Faculty	40.9	20.5	27.3	9.1	2.3
4	Canteen Facilities	27.3	27.3	18.2	20.5	6.8
5	Library:	38.6	22.7	27.3	6.8	4.5

6	Office staff	25.0	34.1	29.5	2.3	4.5
7	Hostel Facilities	13.6	13.6	38.6	18.2	15.9
8	Educational Resources	27.3	43.2	20.5	2.3	6.8
9	Admission Procedure	13.6	36.4	29.5	18.2	2.3
10	Overall Rating of the College	31.8	22.7	25.0	18.2	2.3

No of Respondents:44

Sampling method: RANDOM SAMPLING

Session: 2021-22





NAAC – SSR CYCLE II
1.4 Feedback System

1.4.1 Feedback Analysis & Process
Year: 2021-2022

MANOHAR MEMORIAL COLLEGE, FATEHABAD, HARYANA
Govt. Aided College Affiliated To Ch. Devi Lal University

TEACHERS FEEDBACK Academic Year 2021-2022

PERCENTAGE

S.NO.	Parameters	Strongly agree	Agree	Not sure	Disagree	Strongly disagree
1	The objective of the syllabi are well defined.	55.2	44.8	0.0	0.0	0.0
2	The books/journals etc. prescribed/listed as reference material are relevant, updated and cover the entire syllabi.	62.1	31.0	3.4	0.0	3.4
3	The courses/syllabi of the students taught by me increased my interest, knowledge and perspective in the subject area.	62.1	34.5	3.4	0.0	0.0
4	The college has given me full freedom to adopt new techniques/strategies of teaching such as group discussions, seminar presentations and learners participation.	55.2	44.8	0.0	0.0	0.0
5	Tests and examinations are conducted well in time with proper coverage of all units in the syllabus.	62.1	37.9	0.0	0.0	0.0

6	The environment in the college is conducive to teaching and research.	51.7	48.3	0.0	0.0	0.0
7	The administration is teacher friendly.	37.9	62.1	0.0	0.0	0.0
8	The college provides adequate opportunities and support to faculty members for upgrading their skills and qualifications.	55.2	41.4	3.4	0.0	0.0
9	ICT facilities in the college are adequate and satisfactory.	48.3	48.3	3.4	0.0	0.0
10	Separate space in college canteen is available for teachers.	55.2	41.4	3.4	0.0	0.0
11	Toilets/washroom are clean and properly maintained.	31.0	62.1	3.4	0.0	3.4
12	The classrooms are clean and well maintained.	41.4	58.6	0.0	0.0	0.0

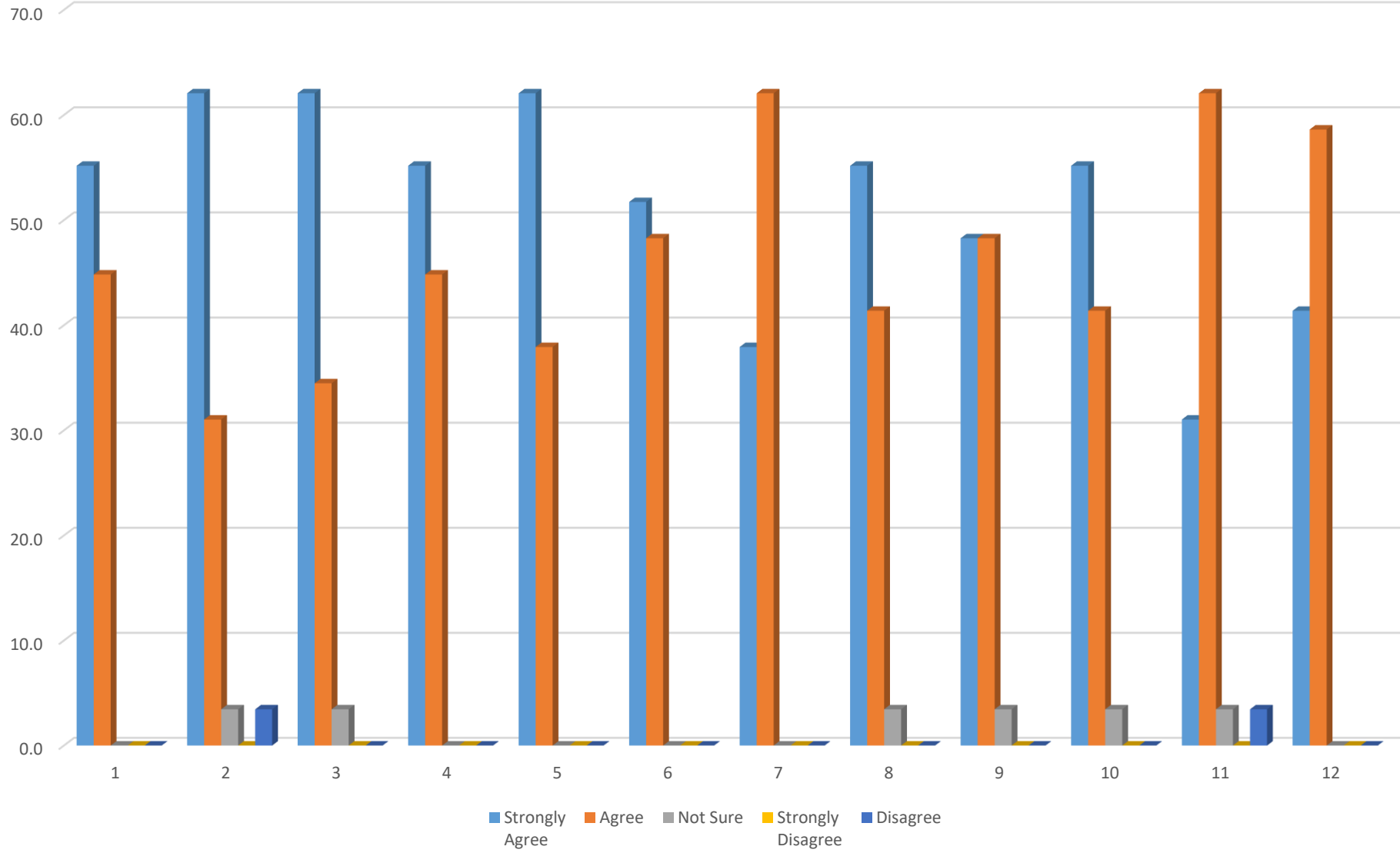
No of Respondents: 29

Sampling method: RANDOM SAMPLING

Based on the feedback collected in session 2021-22, the following actions have been taken:

Sr. No.	Observation/Suggestions	Action Taken
1.	More Educational tours should be organized	The college has organized educational tours in the past. Due to unavoidable circumstances, no educational tour was organized in the session 2021-22. It was resolved that the college will organize Educational Tours in future.
2.	ICT and other facilities for the effective teaching learning process may further be improved	The college has infrastructure and facilities for effective teaching learning. However, to cater to the increasing needs of newly introduced PG Courses, the college needs to upgrade its existing infrastructure. This matter has been considered in the Staff Council meeting of the college and the committees to accomplish the task have been constituted.
3.	The cleanliness and maintenance of campus need some more attention	The concerned departments/ Committee asked to do the needful.
4.	Availability of more variety of food item in the canteen	The Canteen Committee was asked to do the needful.
5.	There is a need to improve the performance of the students	All the teachers are already doing their best. However, they were advised to put more effort and motivate weak students to work hard.
6.	Placement activities should be strengthened	The Career Guidance and Placement Cell organized various Job placements Fair in collaboration with Helpcom Solution-A Tag for Lifetime Company on Dated 5.4.2022 and Majestic Hyundai on Dated 23.6.2022. The Coordinator of the Cell was asked to organize more activities in future.
7.	The Research and Faculty Development Activities should be increased	The college intends to promote research and faculty development activities. For this, Online National Level seminar on Corona positive- awareness and precautions, current issues in IPR in India, digitalization and covid 19, Exploitation and challenges of working women at workplace were organized in the session 2021-22.

Session: 2021-22





NAAC – SSR CYCLE II
1.4 Feedback System

1.4.1 Feedback Analysis & Process
Year: 2022-2023

MANOHAR MEMORIAL COLLEGE, FATEHABAD, HARYANA
Govt. Aided College Affiliated To Ch. Devi Lal University

STUDENTS FEEDBACK Academic Year 2022-2023

PERCENTAGE

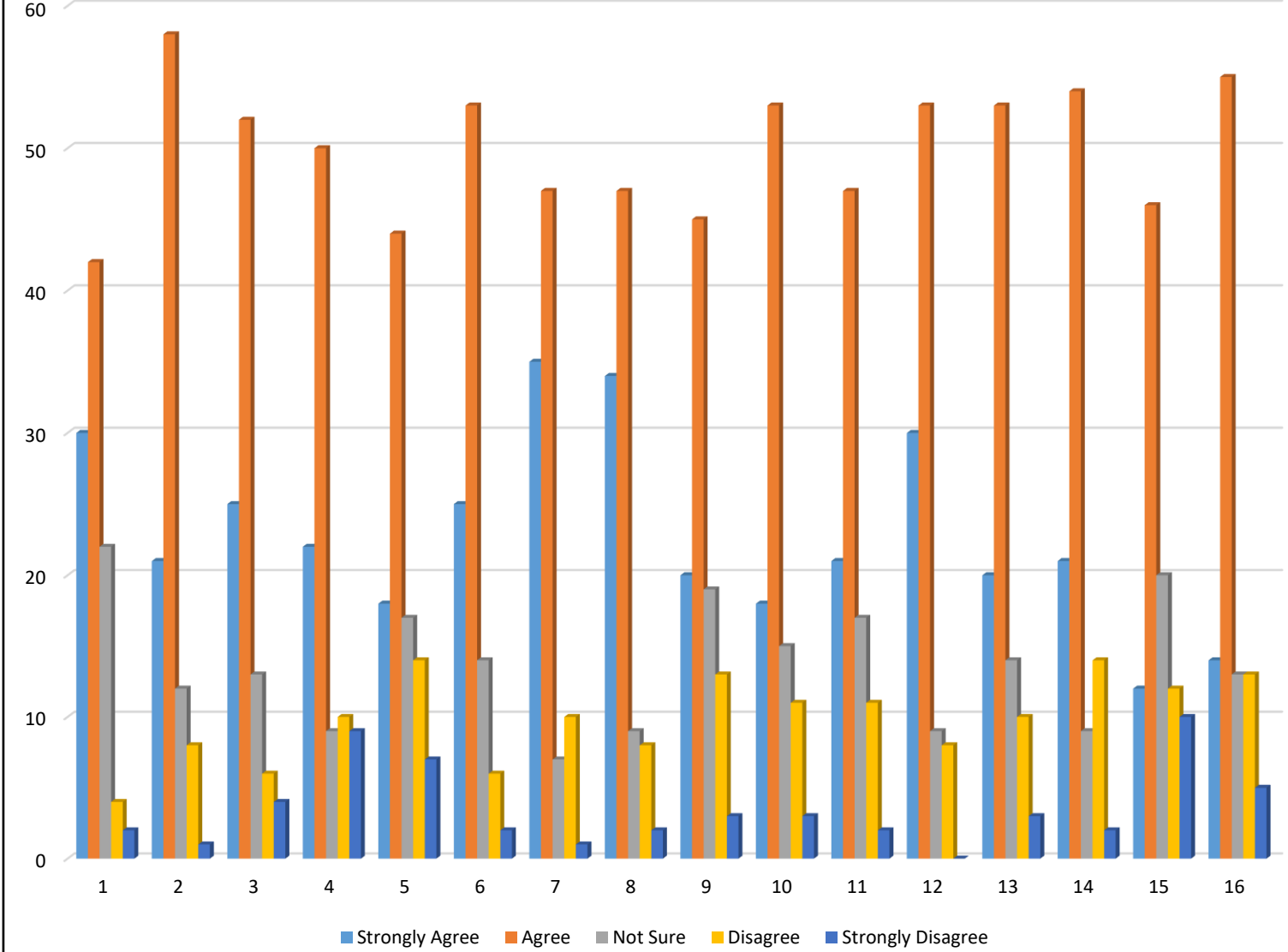
S.NO.	Parameters	Strongly agree	Agree	Not sure	Disagree	Strongly disagree
1	The curriculum is designed so as to enhance our employability	30	42	22	4	2
2	The courses studied by me are relevant and the contents are revised at reasonable intervals	21	58	12	8	1
3	The courses studies by me have enhanced my knowledge as well as my skills and my capabilities	25	52	13	6	4
4	The entire syllabus is completed in time	22	50	9	10	9
5	Modern teaching aids, power point presentation, web- recourse, multi-media, e-content etc. are used by most of teachers while teaching	18	44	17	14	7

6	The teachers guides the students for overall personally development of the students.	25	53	14	6	2
7	The teachers provide the students opportunities to learn and grow.	35	47	7	10	1
8	The teachers give regular and timely feedback on the performance of the students	34	47	9	8	2
9	The assessment and evaluation process is fair and unbiased	20	45	19	13	3
10	The teachers take efforts to inculcate soft skills in the students	18	53	15	11	3
11	The teachers take efforts to enhance employability skills the students	21	47	17	11	2
12	The teachers encourage the students to participate in extra- curricular and co-curricular activities	30	53	9	8	0
13	The teacher to encourage the students to use reference books, e-resources, e-journals etc.	20	53	14	10	3
14	The teachers keep the students updated about the latest development in the subject/ area of knowledge	21	54	9	14	2
15	The teachers take active interest in arranging field visits , study tours etc. for enhancing learning	12	46	20	12	10
16	The teachers usually do necessary follow up with a task assigned to their mentee	14	55	13	13	5

No of Respondents: 100

Sampling method: RANDOM SAMPLING

Session : 2022-23





NAAC – SSR CYCLE II
1.4 Feedback System

1.4.1 Feedback Analysis & Process
Year: 2022-2023

MANOHAR MEMORIAL COLLEGE, FATEHABAD, HARYANA
Govt. Aided College Affiliated To Ch. Devi Lal University

FEEDBACK OF ALUMNI ACADEMIC YEAR : 2022-2023

PERCENTAGE

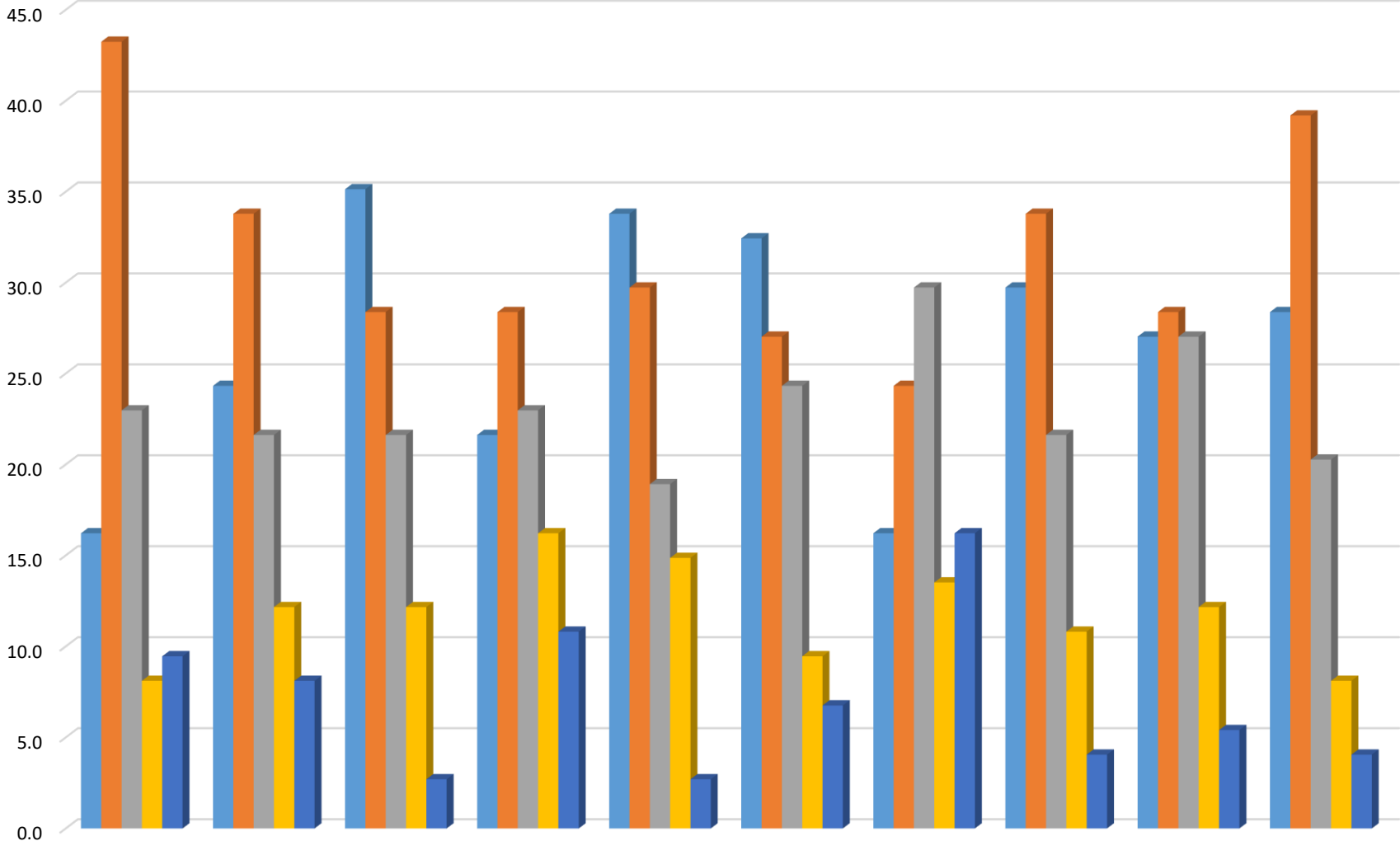
S.NO.	Parameters	Excellent	Very Good	Good	Average	Poor
1	How do you rate the course that you have learnt in the college in relation to your current job/ occupation?	16.2	43.2	23.0	8.1	9.5
2	Infrastructure and Lab facilities	24.3	33.8	21.6	12.2	8.1
3	Faculty	35.1	28.4	21.6	12.2	2.7
4	Canteen Facilities	21.6	28.4	23.0	16.2	10.8
5	Library:	33.8	29.7	18.9	14.9	2.7

6	Office staff	32.4	27.0	24.3	9.5	6.8
7	Hostel Facilities	16.2	24.3	29.7	13.5	16.2
8	Educational Resources	29.7	33.8	21.6	10.8	4.1
9	Admission Procedure	27.0	28.4	27.0	12.2	5.4
10	Overall Rating of the College	28.4	39.2	20.3	8.1	4.1

No of Respondents:74

Sampling method: RANDOM SAMPLING

Session: 2022-23



■ Excellent ■ Very Good ■ Good ■ Average ■ Poor



NAAC – SSR CYCLE II
1.4 Feedback System

1.4.1 Feedback Analysis & Process
Year: 2022-2023

MANOHAR MEMORIAL COLLEGE, FATEHABAD, HARYANA
Govt. Aided College Affiliated To Ch. Devi Lal University

TEACHERS FEEDBACK Academic Year 2022-2023

PERCENTAGE

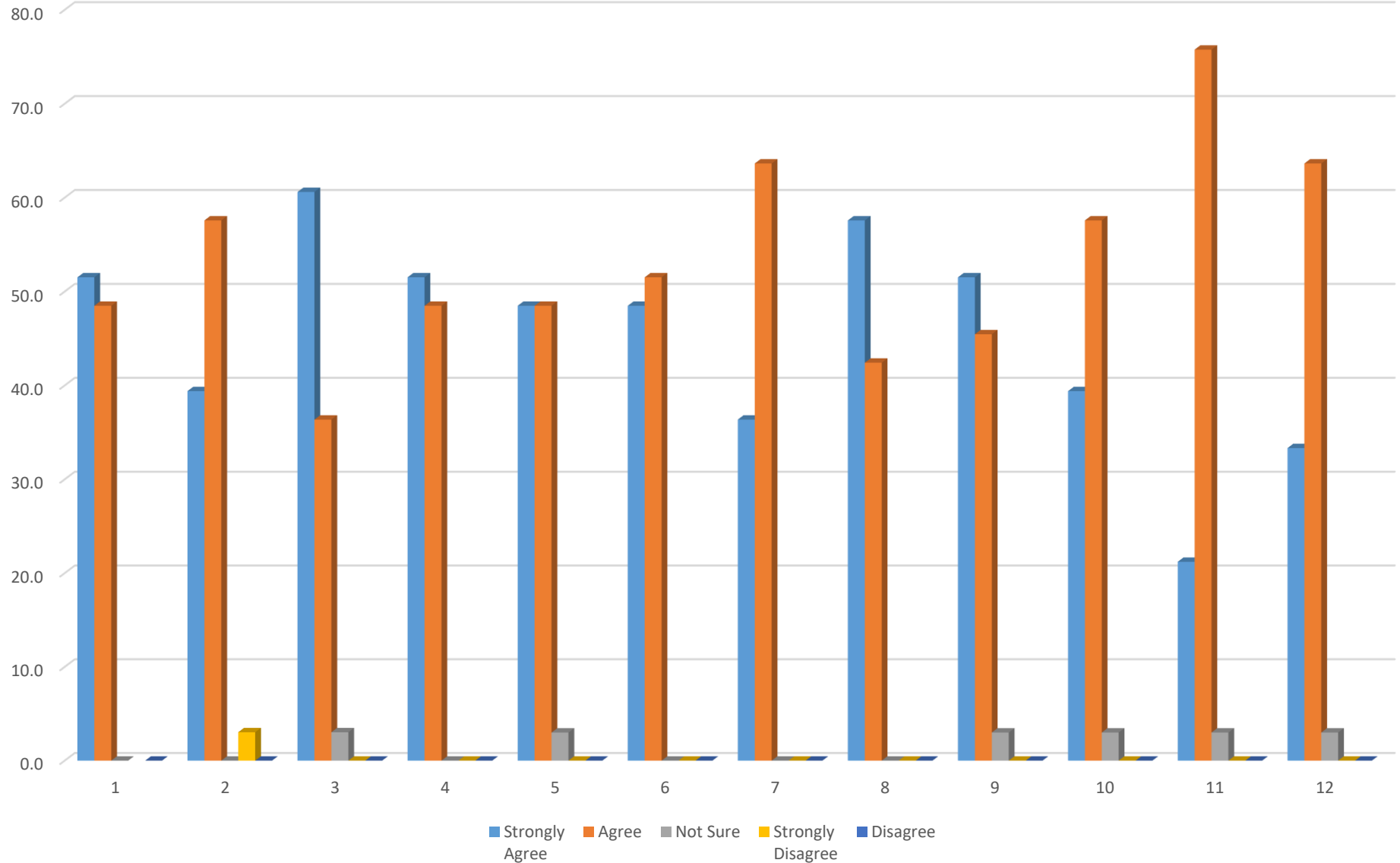
S.NO.	Parameters	Strongly agree	Agree	Not sure	Disagree	Strongly disagree
1	The objective of the syllabi are well defined.	51.5	48.5	0.0	0.0	0.0
2	The books/journals etc. prescribed/listed as reference material are relevant, updated and cover the entire syllabi.	39.4	57.6	0.0	3.0	0.0
3	The courses/syllabi of the students taught by me increased my interest, knowledge and perspective in the subject area.	60.6	36.4	3.0	0.0	0.0
4	The college has given me full freedom to adopt new techniques/strategies of teaching such as group discussions, seminar presentations and learners participation.	51.5	48.5	0.0	0.0	0.0
5	Tests and examinations are conducted well in time with proper coverage of all units in the syllabus.	48.5	48.5	3.0	0.0	0.0

6	The environment in the college is conducive to teaching and research.	48.5	51.5	0.0	0.0	0.0
7	The administration is teacher friendly.	36.4	63.6	0.0	0.0	0.0
8	The college provides adequate opportunities and support to faculty members for upgrading their skills and qualifications.	57.6	42.4	0.0	0.0	0.0
9	ICT facilities in the college are adequate and satisfactory.	51.5	45.5	3.0	0.0	0.0
10	Separate space in college canteen is available for teachers.	39.4	57.6	3.0	0.0	0.0
11	Toilets/washroom are clean and properly maintained.	21.2	75.8	3.0	0.0	0.0
12	The classrooms are clean and well maintained.	33.3	63.6	3.0	0.0	0.0

No of Respondents: 33

Sampling method: RANDOM SAMPLING

Session: 2022-23





NAAC – SSR CYCLE II
1.4 Feedback System

1.4.1 Feedback Analysis & Process
Year: 2022-2023

MANOHAR MEMORIAL COLLEGE, FATEHABAD, HARYANA
Govt. Aided College Affiliated To Ch. Devi Lal University

PARENTS FEEDBACK Academic Year 2022-2023

PERCENTAGE

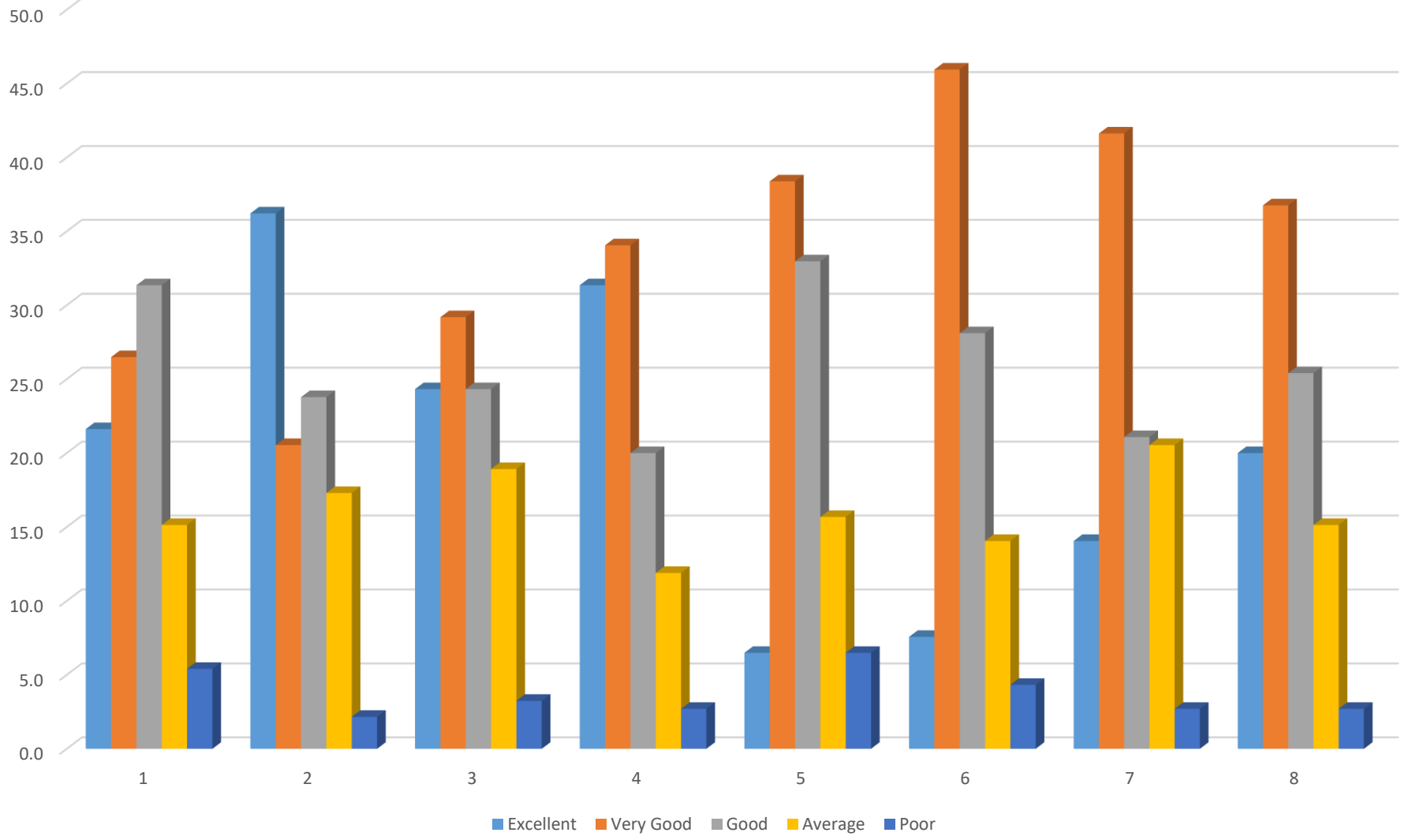
S.NO.	Parameters	Excellent	Very Good	Good	Average	Poor
1	Are you satisfied with the Admission Process of the college?	21.6	26.5	31.4	15.1	5.4
2	Are you satisfied with the infrastructure of the college?	36.2	20.5	23.8	17.3	2.2
3	Are you satisfied with the Extracurricular Activities (Sports & Cultural) of the college?	24.3	29.2	24.3	18.9	3.2
4	Are you satisfied with the teaching mentoring process of the college?	31.4	34.1	20.0	11.9	2.7
5	Are you satisfied with the Library facility of the college?	6.5	38.4	33.0	15.7	6.5

6	Are you satisfied with the canteen facility of the college?	7.6	45.9	28.1	14.1	4.3
7	Are you satisfied with the Learning Environment of the college?	14.1	41.6	21.1	20.5	2.7
8	Are you satisfied with the Discipline in the college?	20.0	36.8	25.4	15.1	2.7

No of Respondents: 185

Sampling method: RANDOM SAMPLING

Session 2022-23



Based on the Informal feedback collected in session 2022-23, the following actions have been taken:

Suggestions	Observation/Source	Action Taken
Renovation of Wash room for teachers and students	Feedback from teachers and students	Washrooms of teacher and students was renovated.
Competitive exam classes	Students	Extension Lecture and workshops organised on Career Guidance and Placement.
Educational tour/exhibition	Students	Two Educational tours were organised to Parliament of India and IAS, Shimla
New education policy 2020	Alumni/ Teachers	Workshop on NEP 2020 conducted/Attended for teachers
Mentorship of Students	Students/Parents/Teachers	Mentor In-charges are assigned to each student of college