

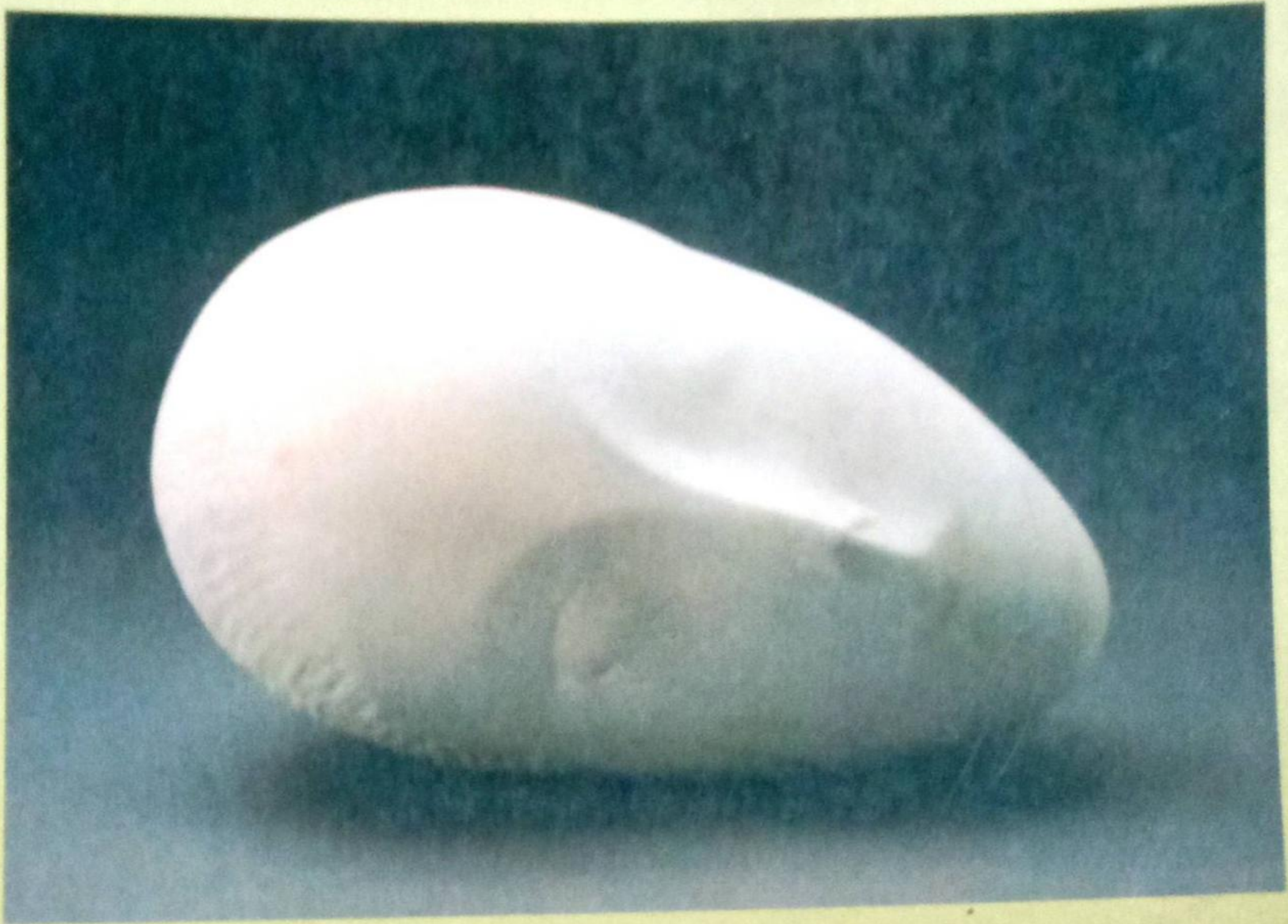
THOMSON  
WADSWORTH

INTERNATIONAL STUDENT EDITION

*Atkinson & Hilgard's*

# INTRODUCTION TO PSYCHOLOGY

14th EDITION



Edward E. Smith  
Susan Nolen - Hoeksema  
Barbara Fredrickson  
Geoffrey R. Loftus

Not for Sale in the  
United States

# CONTENTS IN BRIEF

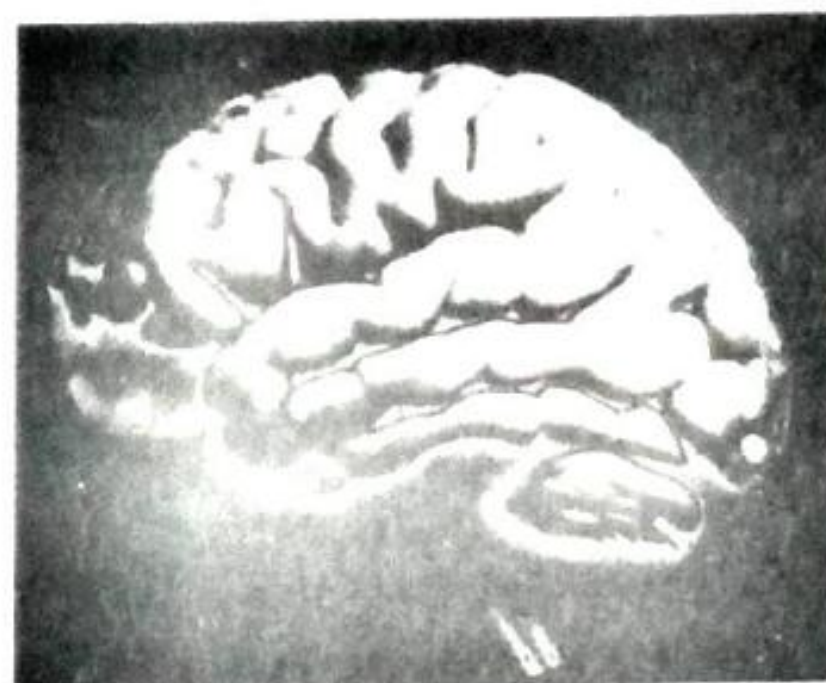
|           |  |            |
|-----------|--|------------|
| <b>1</b>  | <b>The Nature of Psychology</b>                      | <b>1</b>   |
| <b>2</b>  | <b>Biological Foundations of Psychology</b>          | <b>30</b>  |
| <b>3</b>  | <b>Psychological Development</b>                     | <b>64</b>  |
| <b>4</b>  | <b>Sensory Processes</b>                             | <b>106</b> |
| <b>5</b>  | <b>Perception</b>                                    | <b>146</b> |
| <b>6</b>  | <b>Consciousness</b>                                 | <b>194</b> |
| <b>7</b>  | <b>Learning and Conditioning</b>                     | <b>232</b> |
| <b>8</b>  | <b>Memory</b>  | <b>266</b> |
| <b>9</b>  | <b>Language and Thought</b>                          | <b>312</b> |
| <b>10</b> | <b>Motivation</b>                                    | <b>352</b> |
| <b>11</b> | <b>Emotion</b>                                       | <b>388</b> |
| <b>12</b> | <b>Intelligence</b>                                  | <b>426</b> |
| <b>13</b> | <b>Personality</b>                                   | <b>452</b> |
| <b>14</b> | <b>Stress, Health, and Coping</b>                    | <b>492</b> |
| <b>15</b> | <b>Psychological Disorders</b>                       | <b>526</b> |
| <b>16</b> | <b>Treatment of Psychological Disorders</b>          | <b>568</b> |
| <b>17</b> | <b>Social Influence</b>                              | <b>604</b> |
| <b>18</b> | <b>Social Cognition</b>                              | <b>644</b> |
|           | <b>Appendix: Statistical Methods and Measurement</b> | <b>A-1</b> |
|           | <b>Glossary</b>                                      | <b>G-1</b> |
|           | <b>References</b>                                    | <b>R-1</b> |
|           | <b>Credits</b>                                       | <b>C-1</b> |
|           | <b>Name Index</b>                                    | <b>I-1</b> |
|           | <b>Subject Index</b>                                 | <b>I-3</b> |

# CONTENTS



|          |  |           |
|----------|--|-----------|
| <b>1</b> | <b>The Nature of Psychology</b>  | <b>1</b>  |
|          | The Scope of Psychology  | 3         |
|          | Interim Summary  | 5         |
|          | Critical Thinking Questions  | 5         |
|          | <b>The Historical Origins of Psychology</b>  | <b>5</b>  |
|          | <i>Nature-Nurture Debate</i>   | 5         |
|          | <i>The Beginnings of Scientific Psychology</i>   | 6         |
|          | <i>Structuralism and Functionalism</i>   | 6         |
|          | <i>Behaviorism</i>   | 7         |
|          | <i>Gestalt Psychology</i>  | 8         |
|          | <i>Psychoanalysis</i>  | 8         |
|          | <i>Later Developments in 20th-Century Psychology</i>   | 8         |
|          | Interim Summary  | 9         |
|          | Critical Thinking Questions  | 9         |
|          | <b>Contemporary Psychological Perspectives</b>   | <b>9</b>  |
|          | <i>The Neural Basis of Behavior: The Biological Perspective</i>                                      | 10        |
|          | <i>The Behavioral Perspective</i>  | 11        |
|          | <i>The Cognitive Perspective</i>   | 11        |
|          | <i>The Psychoanalytic Perspective</i>  | 12        |
|          | <i>The Subjectivist Perspective</i>  | 13        |
|          | <i>The Neural Basis of Behavior: Relationships Between Psychological and Biological Perspectives</i> | 14        |
|          | <i>Major Subfields of Psychology</i>   | 14        |
|          | Interim Summary  | 15        |
|          | Critical Thinking Questions  | 15        |
|          | <b>How Psychological Research Is Done</b>  | <b>16</b> |
|          | <i>Generating Hypotheses</i>   | 16        |
|          | <i>Experiments</i>   | 18        |
|          | <i>Correlation</i>   | 19        |
|          | <i>Observation</i>   | 21        |

|   |           |
|---|-----------|
| <i>Literature Reviews</i>               | 22        |
| <i>Ethics of Psychological Research</i> | 23        |
| <b>Interim Summary</b>                  | <b>26</b> |
| Critical Thinking Questions             | 26        |



|          |   |           |
|----------|---|-----------|
| <b>2</b> | <b>Biological Foundations of Psychology</b>               | <b>30</b> |
|          | <b>Neurons, the Building Blocks of the Nervous System</b> | <b>32</b> |
|          | <i>Action Potentials</i>                                  | 33        |
|          | <i>Synaptic Transmission</i>                              | 34        |
|          | Interim Summary   | 37        |
|          | Critical Thinking Questions                               | 37        |
|          | <b>Neurotransmitters</b>                                  | <b>37</b> |
|          | Interim Summary   | 38        |
|          | Critical Thinking Questions                               | 38        |
|          | <b>The Organization of the Nervous System</b>             | <b>38</b> |
|          | <i>Divisions of the Nervous System</i>                    | 38        |
|          | <i>The Organization of the Brain</i>                      | 39        |
|          | <i>The Central Core</i>                                   | 39        |
|          | <i>The Limbic System</i>                                  | 42        |
|          | <i>The Cerebrum</i>                                       | 43        |
|          | <i>Pictures of the Living Brain</i>                       | 45        |
|          | <i>Asymmetries in the Brain</i>                           | 47        |
|          | <i>Language and the Brain</i>                             | 50        |
|          | <i>The Autonomic Nervous System</i>                       | 51        |
|          | Interim Summary   | 53        |
|          | Critical Thinking Questions                               | 53        |

**The Endocrine System** 53  
 Interim Summary 54  
 Critical Thinking Questions 54  
**Evolution, Genes, and Behavior** 54  
*Evolution and Behavior* 55  
*Chromosomes and Genes* 55  
*Genetic Studies of Behavior* 57  
 Interim Summary 59  
 Critical Thinking Questions 59

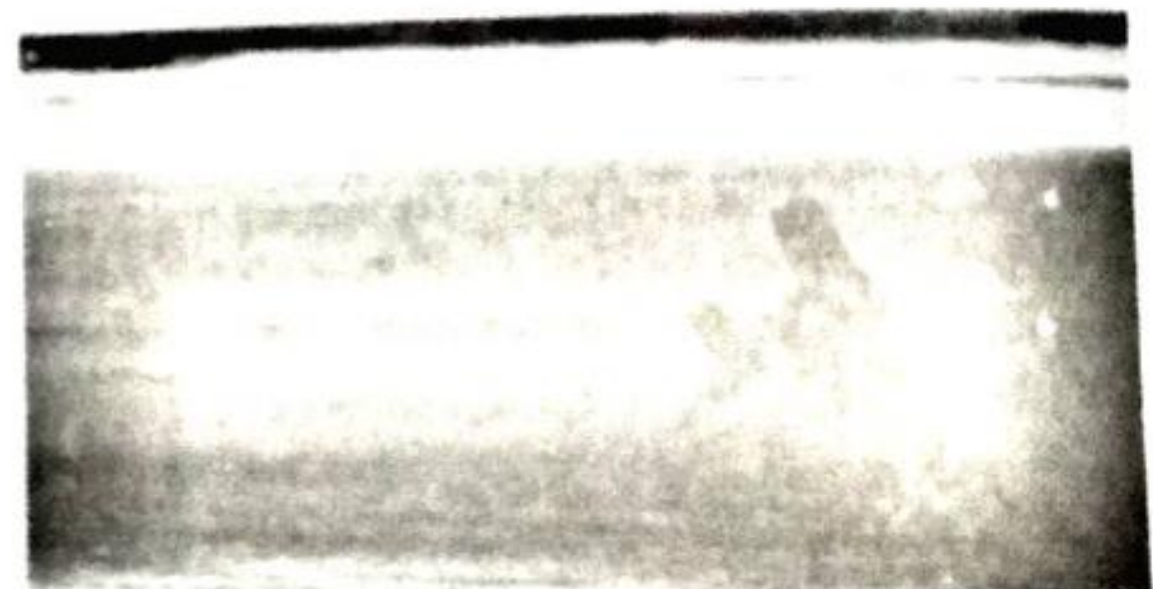


**3 Psychological Development** 64

Nature and Nurture 66  
*Stages of Development* 68  
 Interim Summary 69  
 Critical Thinking Questions 69  
**Capacities of the Newborn** 69  
*Vision* 69  
*Hearing* 70  
*Taste and Smell* 71  
*Learning and Memory* 71  
 Interim Summary 74  
 Critical Thinking Questions 74  
**Cognitive Development in Childhood** 74  
*Piaget's Stage Theory* 74  
*A Critique of Piaget's Theory* 78  
*Alternatives to Piaget's Theory* 79  
*Theory of Mind* 82  
*The Development of Moral Judgment* 84  
 Interim Summary 86  
 Critical Thinking Questions 86

**Personality and Social Development** 86

*Temperament* 86  
*Early Social Behavior* 88  
*Attachment* 89  
*Parenting Styles* 91  
*Later Development* 92  
*Effects of Day Care* 92  
*Gender Identity and Sex Typing* 93  
 Interim Summary 96  
 Critical Thinking Questions 97  
**Adolescent Development** 97  
 Interim Summary 102  
 Critical Thinking Questions 102



**4 Sensory Processes** 106

**Characteristics of Sensory Modalities** 108  
*Sensitivity* 108  
*Signal-Detection Theory* 111  
*Sensory Coding* 113  
 Interim Summary 115  
 Critical Thinking Questions 116  
**Vision** 116  
*Light and Vision* 116  
*The Visual System* 116  
*Seeing Light* 118  
*Seeing Patterns* 120  
*Seeing Color* 121  
 Interim Summary 126  
 Critical Thinking Questions 126

**Hearing** 126

- Sound Waves* 127
- The Auditory System* 128
- Hearing Sound Intensity* 129
- Hearing Pitch* 130
- Interim Summary 131
- Critical Thinking Questions 131

**Other Senses** 132

- Smell* 133
- Taste* 136
- Pressure and Temperature* 137
- Pain* 137
- Interim Summary 139
- Critical Thinking Questions 139



**5 Perception** 146

**What Is the Use of Perception?** 148

- Interim Summary 149
- Critical Thinking Questions 150

**Attention** 150

- Selective Attention* 150
- Auditory Attention* 151
- Attention, Perception, and Memory* 151
- Interim Summary 153
- Critical Thinking Questions 153

**Localization** 154

- Separation of Objects* 154
- Perceiving Distance* 156
- Perceiving Motion* 158
- Interim Summary 160
- Critical Thinking Questions 160

**Recognition** 160

- The Binding Problem: Preattentive and Attentive Processes* 161
- Determining What an Object Is* 162
- Later Stages of Recognition: Network Models* 164
- Recognizing Natural Objects and Top-Down Processing* 166
- Failure of Recognition* 169
- Interim Summary 170
- Critical Thinking Questions 170

**Abstraction** 170

- Interim Summary 173
- Critical Thinking Questions 173

**Perceptual Constancies** 173

- Color and Brightness Constancy* 174
- Shape Constancy* 175
- Size Constancy* 175
- Illusions* 176
- Constancies in All Sensory Modalities* 178
- Interim Summary 179
- Critical Thinking Questions 179

**The Neural Basis of Behavior: Divisions of Labor in the Brain** 179

- The Neural Basis of Attention* 179
- The Visual Cortex* 180
- Recognition Versus Localization Systems* 182
- Interim Summary 183
- Critical Thinking Questions 183

**Perceptual Development** 183

- Discrimination by Infants* 183
- Controlled Stimulation* 186
- Interim Summary 187
- Critical Thinking Questions 187



## 6 Consciousness 194

### Aspects of Consciousness 196

*Consciousness* 196

*Preconscious Memories* 197

*The Unconscious* 197

*Automaticity and Dissociation* 198

Interim Summary 199

Critical Thinking Questions 199

### Sleep and Dreams 199

*The Neural Basis of Behavior: Stages of Sleep* 199

*Sleep Theory* 202

*Sleep Disorders* 202

*Dreams* 204

*Theories of Dreaming* 206

Interim Summary 207

Critical Thinking Questions 207

### Meditation 207

Interim Summary 208

Critical Thinking Questions 208

### Hypnosis 208

*Induction of Hypnosis* 208

*Hypnotic Suggestions* 210

*The Hidden Observer* 211

Interim Summary 212

Critical Thinking Questions 212

### Psychoactive Drugs 212

*Depressants* 214

*Opiates* 218

*Stimulants* 220

*Hallucinogens* 221

*Cannabis* 222

Interim Summary 223

Critical Thinking Questions 223

### PSI Phenomena 224

*Experimental Evidence* 224

*The Debate Over the Evidence* 225

*Anecdotal Evidence* 227

Interim Summary 227

Critical Thinking Questions 227



## 7 Learning and Conditioning 232

### Perspectives on Learning 234

Interim Summary 234

Critical Thinking Questions 234

### Classical Conditioning 235

*Pavlov's Experiments* 235

*Phenomena and Applications* 236

*Predictability and Cognitive Factors* 238

*Biological Constraints* 240

Interim Summary 241

Critical Thinking Questions 241

### Instrumental Conditioning 242

*The Law of Effect* 242

*Skinner's Experiments* 242

*Phenomena and Applications* 245

*Aversive Conditioning* 248

*Control and Cognitive Factors* 249

*Biological Constraints* 250

Interim Summary 251

Critical Thinking Questions 251

### Complex Learning 251

*Cognitive Maps and Abstract Concepts* 251

*Insight Learning* 252

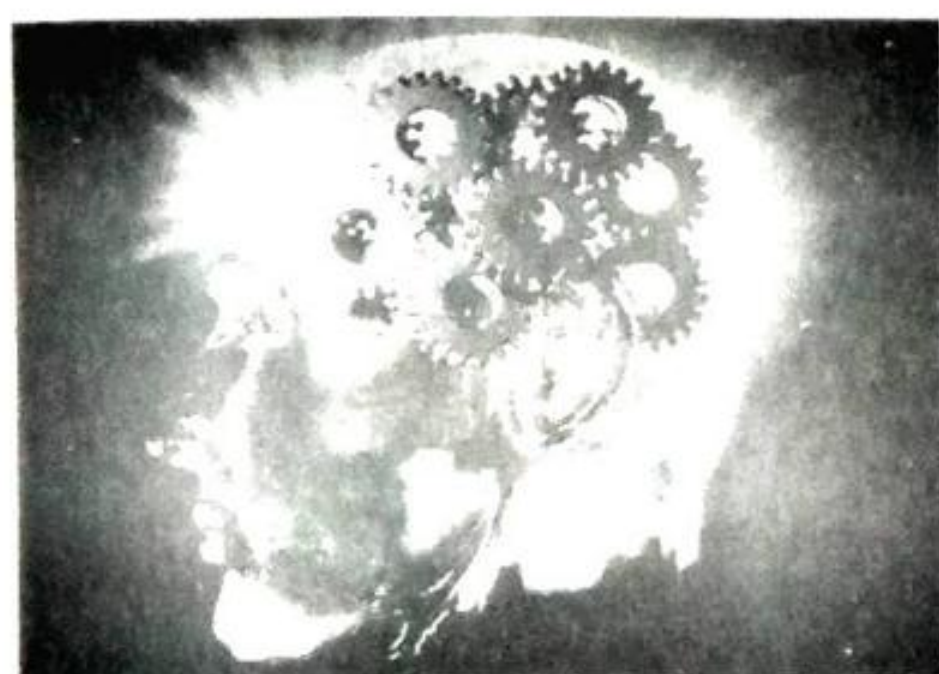
*Prior Beliefs* 254

Interim Summary 255

Critical Thinking Questions 255

**The Neural Basis of Behavior: Learning and Conditioning** 256

- Habituation and Sensitization* 256
- Classical Conditioning* 260
- Cellular Basis of Learning* 261
- Interim Summary 261
- Critical Thinking Questions 261



**8 Memory** 266

**Three Important Distinctions** 268

- Three Stages of Memory* 268
- Three Memory Stores* 269
- Different Memories for Different Kinds of Information* 269
- Interim Summary 270
- Critical Thinking Questions 270

**Sensory Memory** 270

- Sperling's Experiments: The Partial-Report Experiment* 270
- Visible Persistence: The Temporal Integration Experiment* 271
- Partial Report, Visible Persistence, and a Theory That Integrates Them* 272
- Interim Summary 273
- Critical Thinking Questions 273

**Working Memory** 273

- Encoding* 273
- Storage* 276
- Retrieval* 277
- Working Memory and Thought* 278
- Transfer From Working Memory to Long-Term Memory* 279
- The Neural Basis of Behavior: Division of Brain Labor Between Working Memory and Long-Term Memory* 280
- Interim Summary 280
- Critical Thinking Questions 280

**Long-Term Memory** 281

- Encoding* 281
- Retrieval* 282
- The Neural Basis of Behavior: Forgetting—Loss of Information From Storage* 285
- Interactions Between Encoding and Retrieval* 285
- Emotional Factors in Forgetting* 287
- Interim Summary 288
- Critical Thinking Questions 288

**Implicit Memory** 289

- Memory in Amnesia* 289
- A Variety of Memory Systems* 291
- Implicit Memory in Normal Individuals* 292
- Interim Summary 293
- Critical Thinking Questions 293

**Constructive Memory** 293

- Piaget's Childhood Memory* 294
- Constructive Processes at the Time of Memory Encoding* 294
- Post-Event Memory Reconstruction* 295
- Constructive memory and the Legal System* 298
- Interim Summary 301
- Critical Thinking Questions 301

**Improving Memory** 301

- Chunking and Memory Span* 301
- Imagery and Encoding* 302
- Elaboration and Encoding* 303
- Context and Retrieval* 303
- Organization* 304
- Practicing Retrieval* 304
- Interim Summary 305
- Critical Thinking Questions 305



**9 Language and Thought** 312

- Language and Communication 314
  - Levels of Language* 314
  - Language Units and Processes* 314
  - Effects of Context on Comprehension and Production* 316
  - The Neural Basis of Behavior: Language* 318
  - Interim Summary 319
  - Critical Thinking Questions 319
- The Development of Language 319
  - What is Acquired?* 320
  - Learning Processes* 321
  - Innate Factors* 322
  - Interim Summary 325
  - Critical Thinking Questions 325
- Concepts and Categorization: The Building Blocks of Thought 326
  - Functions of Concepts* 326
  - Prototypes* 326
  - Hierarchies of Concepts* 328
  - Different Categorization Processes* 329
  - Acquiring Concepts* 330
  - The Neural Basis of Behavior: Concepts and Categorization* 331
  - Interim Summary 333
  - Critical Thinking Questions 333
- Reasoning 333
  - Deductive Reasoning* 334
  - Inductive Reasoning* 335
  - The Neural Basis of Behavior: Reasoning* 337
  - Interim Summary 339
  - Critical Thinking Questions 339

- Imaginal Thought 339
  - Imaginal Operations* 339
  - The Neural Basis of Behavior: Imagery* 341
  - Interim Summary 342
  - Critical Thinking Questions 342
- Thought in Action: Problem Solving 342
  - Problem-Solving Strategies* 342
  - Representing the Problem* 344
  - Experts Versus Novices* 344
  - Interim Summary 348
  - Critical Thinking Questions 348



**10 Motivation** 352

- Reward and Incentive Motivation 354
  - Drug Addiction and Reward* 357
  - Interim Summary 358
  - Critical Thinking Questions 358
- Homeostasis and Drives 358
  - Temperature and Homeostasis* 359
  - Thirst as a Homeostatic Process* 359
  - Interim Summary 360
  - Critical Thinking Questions 360
- Hunger 361
  - Interactions Between Homeostasis and Incentives*
  - Physiological Hunger Cues* 363
  - The Neural Basis of Behavior: Integration of Hunger Signals* 363
  - Obesity 365
  - Anorexia and Bulimia* 369
  - Interim Summary 372
  - Critical Thinking Questions 372



|                                    |     |
|------------------------------------|-----|
| <b>Gender and Sexuality</b>        | 373 |
| <i>Early Sexual Development</i>    | 373 |
| <i>Hormones Versus Environment</i> | 374 |
| <i>Adult Sexuality</i>             | 375 |
| <i>Sexual Orientation</i>          | 379 |
| Interim Summary                    | 384 |
| Critical Thinking Questions        | 384 |



## **11 Emotion** 388

|  |     |
|--|-----|
| <b>Components of Emotion</b>                                 | 390 |
| Interim Summary  | 391 |
| Critical Thinking Questions                                  | 391 |
| <b>Cognitive Appraisal and Emotion</b>                       | 392 |
| <i>Discovery of Appraisals</i>                               | 392 |
| <i>Themes and Dimensions of Appraisals</i>                   | 393 |
| <i>Conscious and Unconscious Appraisals</i>                  | 395 |
| <i>The Neural Basis of Behavior: Appraisals in the Brain</i> | 395 |
| Interim Summary  | 396 |
| Critical Thinking Questions                                  | 396 |
| <b>Subjective Experiences and Emotion</b>                    | 396 |
| <i>Thought and Action Tendencies</i>                         | 397 |
| <i>Feelings Modify Attention and Learning</i>                | 397 |
| <i>Feelings Modify Evaluations and Judgments</i>             | 400 |
| Interim Summary  | 401 |
| Critical Thinking Questions                                  | 401 |
| <b>Bodily Changes and Emotion</b>                            | 401 |
| <i>Intensity of Emotions</i>                                 | 403 |
| <i>Differentiation of Emotions</i>                           | 404 |
| Interim Summary  | 405 |
| Critical Thinking Questions                                  | 405 |

|  |     |
|--|-----|
| <b>Facial Expression and Emotion</b>                       | 406 |
| <i>Communication of Emotion Through Facial Expressions</i> | 406 |
| <i>The Facial Feedback Hypothesis</i>                      | 408 |
| Interim Summary  | 408 |
| Critical Thinking Questions                                | 408 |
| <b>Responses to Emotion: Emotion Regulation</b>            | 408 |
| Interim Summary  | 410 |
| Critical Thinking Questions                                | 410 |
| <b>Emotions, Gender, and Culture</b>                       | 410 |
| <i>Gender Differences</i>                                  | 411 |
| <i>Cultural Differences</i>                                | 412 |
| Interim Summary  | 414 |
| Critical Thinking Questions                                | 414 |
| <b>Aggression</b>  | 414 |
| <i>Aggression as a Drive</i>                               | 414 |
| <i>Aggression as a Learned Response</i>                    | 415 |
| <i>Aggressive Expression and Catharsis</i>                 | 418 |
| Interim Summary  | 423 |
| Critical Thinking Questions                                | 423 |



## **12 Intelligence** 426

|  |     |
|--|-----|
| <b>Assessment of Intellectual Abilities</b>  | 428 |
| <i>Reliability</i>                           | 428 |
| <i>Validity</i>                              | 429 |
| <i>Early Intelligence Tests</i>              | 429 |
| <i>The Stanford-Binet Intelligence Scale</i> | 430 |
| <i>The Wechsler Intelligence Scales</i>      | 432 |
| <i>Group Ability Tests</i>                   | 432 |
| <i>The Factorial Approach</i>                | 433 |
| <i>Cultural Considerations</i>               | 434 |
| Interim Summary                              | 435 |
| Critical Thinking Questions                  | 436 |

|  |     |
|--|-----|
| <b>Contemporary Theories of Intelligence</b>                       | 436 |
| <i>Gardner's Theory of Multiple Intelligences</i>                  | 436 |
| <i>Anderson's Theory of Intelligence and Cognitive Development</i> | 437 |
| <i>Sternberg's Triarchic Theory</i>                                | 439 |
| <i>Ceci's Biocological Theory</i>                                  | 440 |
| <i>Comparing Theories of Intelligence</i>                          | 441 |
| <i>Cross-Cultural Perspectives on Intelligence</i>                 | 442 |
| Interim Summary  | 442 |
| Critical Thinking Questions  | 443 |
| <b>Genetics and Intelligence</b>                                   | 443 |
| <i>Heritability</i>  | 444 |
| Interim Summary  | 448 |
| Critical Thinking Questions  | 448 |



### **13 Personality** 452

|                                    |     |
|------------------------------------|-----|
| <b>Assessment of Personality</b>   | 454 |
| <i>Personality Inventories</i>     | 456 |
| Interim Summary                    | 458 |
| Critical Thinking Questions        | 459 |
| <b>The Psychoanalytic Approach</b> | 459 |
| <i>Personality Structure</i>       | 460 |
| <i>Personality Dynamics</i>        | 460 |
| <i>Personality Development</i>     | 463 |

|   |     |
|---|-----|
| <i>Modifications of Freud's Theories</i>                | 464 |
| <i>Projective Tests</i>                                 | 465 |
| <i>Problems with Projective Tests</i>                   | 467 |
| <i>A Psychoanalytic Portrait of Human Nature</i>        | 467 |
| <i>An Evaluation of the Psychoanalytic Approach</i>     | 469 |
| Interim Summary   | 469 |
| Critical Thinking Questions                             | 469 |
| <b>The Behaviorist Approach</b>                         | 469 |
| <i>Social Learning and Conditioning</i>                 | 469 |
| <i>A Behaviorist Portrait of Human Behaviour</i>        | 471 |
| <i>An Evaluation of the Behaviorist Approach</i>        | 471 |
| Interim Summary   | 471 |
| Critical Thinking Questions                             | 471 |
| <b>The Cognitive Approach</b>                           | 471 |
| <i>Social Learning Theory</i>                           | 472 |
| <i>Kelly's Personal Construct Theory</i>                | 473 |
| <i>Self-Schemas</i>                                     | 474 |
| <i>An Evaluation of the Cognitive Approach</i>          | 475 |
| Interim Summary   | 476 |
| Critical Thinking Questions                             | 476 |
| <b>The Humanistic Approach</b>                          | 476 |
| <i>Carl Rogers</i>                                      | 476 |
| <i>Abraham Maslow</i>                                   | 478 |
| <i>A Humanistic Portrait of Human Nature</i>            | 479 |
| <i>An Evaluation of the Humanistic Approach</i>         | 480 |
| Interim Summary   | 480 |
| Critical Thinking Questions                             | 481 |
| <b>The Evolutionary Approach</b>                        | 481 |
| <i>An Evolutionary Portrait of Human Nature</i>         | 481 |
| <i>An Evaluation of the Evolutionary Approach</i>       | 483 |
| Interim Summary   | 483 |
| Critical Thinking Questions                             | 483 |
| <b>The Genetics of Personality</b>                      | 483 |
| <i>Interactions Between Personality and Environment</i> | 483 |



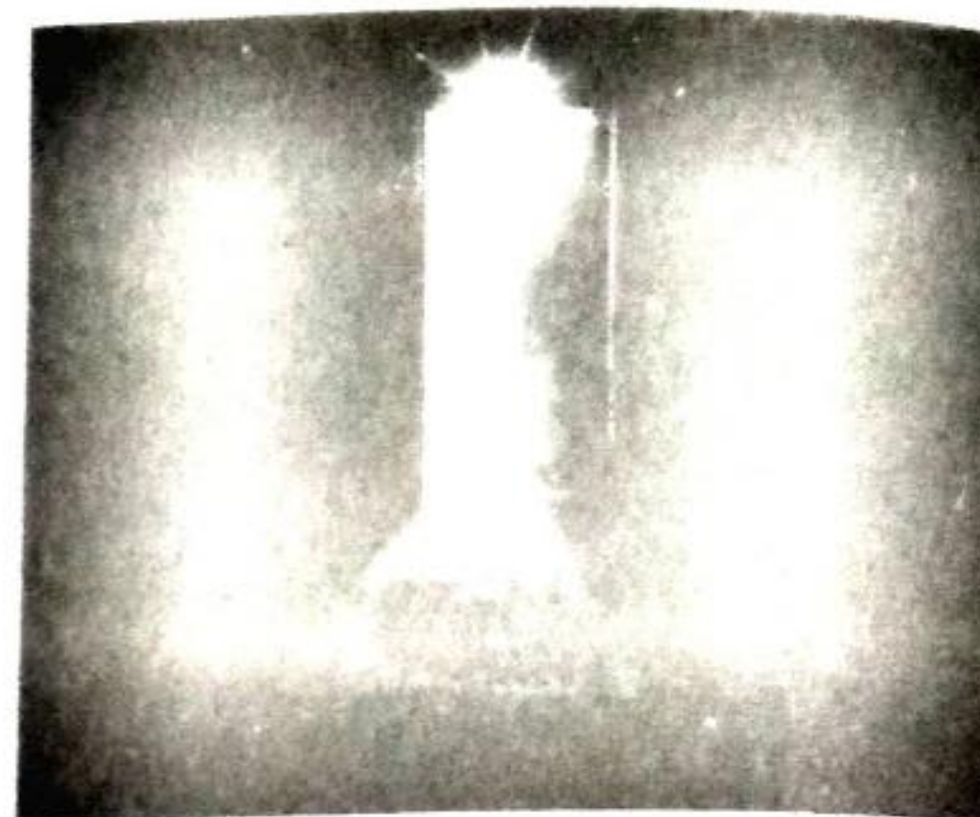
|  |     |
|--|-----|
| <b>14 Stress, Health, and Coping</b>                                   | 492 |
| <b>Characteristics of Stressful Events</b>                             | 494 |
| <i>Traumatic Events</i>  | 494 |
| <i>Controllability</i>   | 495 |
| <i>Predictability</i>  | 496 |
| <i>Major Changes in Life Circumstances</i>                             | 496 |
| <i>Internal Conflicts</i>  | 497 |
| Interim Summary  | 498 |
| Critical Thinking Questions  | 498 |
| <b>Psychological Reactions to Stress</b>                               | 498 |
| <i>Anxiety</i>   | 498 |
| <i>Anger and Aggression</i>  | 501 |
| <i>Apathy and Depression</i>   | 501 |
| <i>Cognitive Impairment</i>  | 502 |
| Interim Summary  | 502 |
| Critical Thinking Questions  | 502 |
| <b>The Neural Basis of Behavior: Physiological Reactions to Stress</b> | 502 |
| <i>The Fight-or-Flight Response</i>                                    | 502 |
| <i>The Physiology of PTSD</i>  | 504 |
| <i>How Stress Affects Health</i>                                       | 505 |
| Interim Summary  | 510 |
| Critical Thinking Questions  | 510 |
| <b>Psychological Factors and Stress Responses</b>                      | 510 |
| <i>Psychoanalytic Theory</i>   | 510 |
| <i>Behavioral Theory</i>   | 511 |
| <i>Cognitive Theory</i>  | 511 |
| <i>The Type A Pattern</i>  | 513 |
| Interim Summary  | 515 |
| Critical Thinking Questions  | 515 |

|                                  |     |
|----------------------------------|-----|
| <b>Coping Skills</b>             | 515 |
| <i>Problem-Focused Coping</i>    | 515 |
| <i>Emotion-Focused Coping</i>    | 516 |
| Interim Summary                  | 519 |
| Critical Thinking Questions      | 519 |
| <b>Managing Stress</b>           | 519 |
| <i>Behavioral Techniques</i>     | 519 |
| <i>Cognitive Techniques</i>      | 521 |
| <i>Modifying Type A Behavior</i> | 521 |
| Interim Summary                  | 524 |
| Critical Thinking Questions      | 524 |



|   |     |
|---|-----|
| <b>15 Psychological Disorders</b>       | 526 |
| <b>Defining Abnormality</b>             | 528 |
| <i>Deviation From Cultural Norms</i>    | 528 |
| <i>Deviation From Statistical Norms</i> | 528 |
| <i>Maladaptiveness of Behavior</i>      | 528 |
| <i>Personal Distress</i>                | 528 |
| <i>What Is Normality?</i>               | 529 |
| <b>Classifying Abnormal Behaviors</b>   | 529 |
| <i>Perspectives on Mental Disorders</i> | 532 |
| Interim Summary                         | 533 |
| Critical Thinking Questions             | 533 |

|  |     |
|--|-----|
| <b>Anxiety Disorders</b>                             | 533 |
| <i>Panic Disorders</i>                               | 534 |
| <i>Understanding Panic Disorder and Agoraphobia</i>  | 535 |
| <i>Phobias</i>                                       | 537 |
| <i>Understanding Phobias</i>                         | 538 |
| <i>Obsessive-Compulsive Disorder</i>                 | 538 |
| <i>Understanding Obsessive-Compulsive Disorder</i>   | 539 |
| Interim Summary                                      | 541 |
| Critical Thinking Questions                          | 541 |
| <b>Mood Disorders</b>                                | 542 |
| <i>Depression</i>                                    | 542 |
| <i>Bipolar Disorder</i>                              | 543 |
| <i>Understanding Mood Disorders</i>                  | 544 |
| Interim Summary                                      | 548 |
| Critical Thinking Questions                          | 549 |
| <b>Schizophrenia</b>                                 | 549 |
| <i>Characteristics of Schizophrenia</i>              | 549 |
| <i>Motor Symptoms and Withdrawal From Reality</i>    | 551 |
| <i>Culture and the Progression of Schizophrenia</i>  | 551 |
| <i>Understanding Schizophrenia</i>                   | 552 |
| Interim Summary                                      | 555 |
| Critical Thinking Questions                          | 556 |
| <b>Personality Disorders</b>                         | 556 |
| <i>Antisocial Personality</i>                        | 557 |
| <i>Understanding Antisocial Personality Disorder</i> | 557 |
| <i>Borderline Personality Disorder</i>               | 558 |
| <i>Understanding Borderline Personality Disorder</i> | 560 |
| Interim Summary                                      | 560 |
| Critical Thinking Questions                          | 560 |
| <b>Dissociative Identity Disorder</b>                | 560 |
| Interim Summary                                      | 562 |
| Critical Thinking Questions                          | 562 |
| <b>Insanity as a Legal Defense</b>                   | 562 |
| Interim Summary                                      | 563 |
| Critical Thinking Questions                          | 563 |



|   |     |
|---|-----|
| <b>16 Treatment of Psychological Disorders</b>          | 568 |
| <b>Historical Background</b>                            | 570 |
| <i>Early Asylums</i>                                    | 571 |
| <i>Modern Treatment Facilities</i>                      | 572 |
| <i>Professionals Who Provide Psychotherapy</i>          | 573 |
| Interim Summary   | 574 |
| Critical Thinking Questions                             | 574 |
| <b>Techniques of Psychotherapy</b>                      | 574 |
| <i>Psychodynamic Therapies</i>                          | 574 |
| <i>Behavior Therapies</i>                               | 575 |
| <i>Cognitive-Behavior Therapies</i>                     | 580 |
| <i>Humanistic Therapies</i>                             | 582 |
| <i>Sociocultural Approaches to Therapy</i>              | 582 |
| <i>An Eclectic Approach</i>                             | 585 |
| <i>Special Issues in Treating Children</i>              | 587 |
| <i>The Effectiveness of Psychotherapy</i>               | 587 |
| <i>Common Factors in Psychotherapies</i>                | 589 |
| Interim Summary   | 590 |
| Critical Thinking Questions                             | 590 |
| <b>The Neural Basis of Behavior:</b>                    |     |
| <b>Biological Therapies</b>                             | 591 |
| <i>Psychotherapeutic Drugs</i>                          | 591 |
| <i>Electroconvulsive Therapy</i>                        | 593 |
| <i>Combining Biological and Psychological Therapies</i> | 595 |
| Interim Summary   | 595 |
| Critical Thinking Questions                             | 596 |

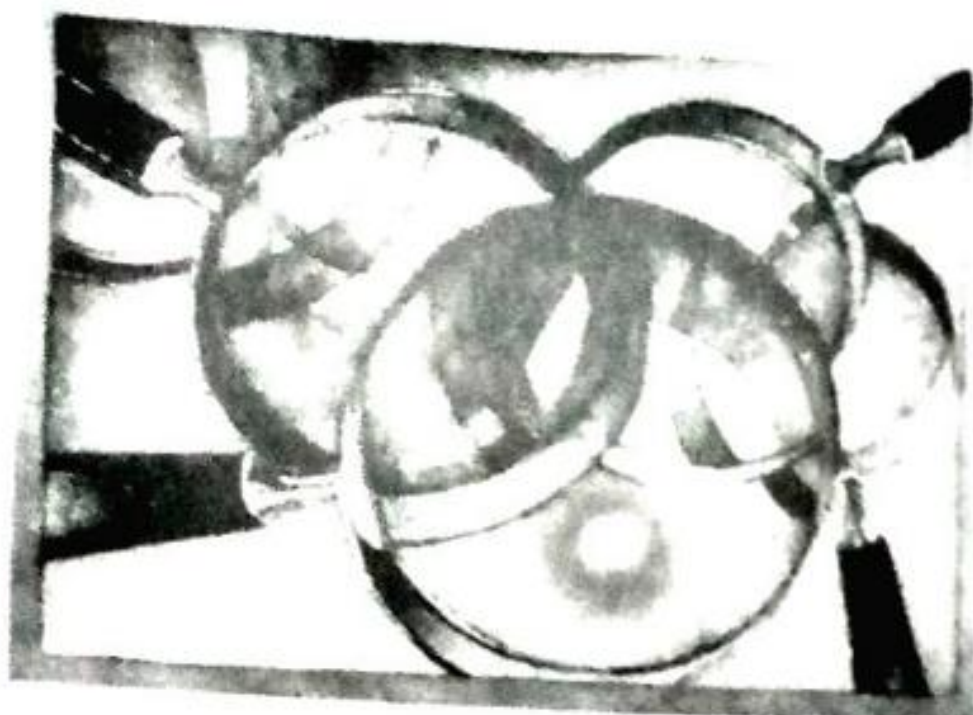
**Effects of Culture and Gender on Therapy** 596  
 Interim Summary 597  
 Critical Thinking Questions 597  
**Enhancing Mental Health** 600  
 Interim Summary 601  
 Critical Thinking Questions 601

**Recap: Social Psychological Views of the Seemingly Inexplicable** 640  
 Critical Thinking Questions 641



**17 Social Influence** 604  
**The Presence of Others** 606  
*Social Facilitation and Social Inhibition* 606  
*Deindividuation* 608  
*Bystander Effects* 610  
 Interim Summary 613  
 Critical Thinking Questions 613  
**Compliance and Obedience** 613  
*Conformity to a Majority* 613  
*Minority Influence* 617  
*Obedience to Authority* 618  
 Interim Summary 625  
 Critical Thinking Questions 625  
**Internalization** 626  
*Self-Justification* 626  
*Reference Groups and Identification* 630  
 Interim Summary 632  
 Critical Thinking Questions 632  
**Group Interactions** 632  
*Institutional Norms* 632  
*Group Decision Making* 634  
 Interim Summary 640  
 Critical Thinking Questions 640

**18 Social Cognition** 644  
**Impression Formation** 646  
*Stereotypes* 646  
*Individuation* 652  
*Attributions* 654  
 Interim Summary 658  
 Critical Thinking Questions 658  
**Attitudes** 658  
*Persuasive Communication* 659  
*Attitudes and Behavior* 662  
 Interim Summary 663  
 Critical Thinking Questions 664  
**Interpersonal Attraction** 664  
*Liking and Attraction* 664  
*Loving and Mating* 668  
 Interim Summary 674  
 Critical Thinking Questions 674  
**Recap: A Tale of Two Modes of Social Cognition** 674  
 Critical Thinking Questions 674



# CUTTING-EDGE RESEARCH

- Chapter 1 **21st-Century Psychology** 16
- Chapter 2 **Growing a New Brain** 46
- Chapter 3 **Massage Therapy for At-Risk Babies** 73
- Chapter 4 **Artificial Ears and Eyes** 132
- Chapter 5 **Distraction Via Virtual Reality Diminishes Severe Pain** 152
- Chapter 6 **Finding the Gene for Smoking** 214
- Chapter 7 **Building a Smarter Brain** 256
- Chapter 8 **An Herbal Remedy for Memory Loss?** 292
- Chapter 9 **Decision Making and the Brain** 338
- Chapter 10 **Wanting Versus Liking** 356
- Chapter 11 **Benefits of Positive Emotions** 398
- Chapter 12 **Emotional Intelligence** 438
- Chapter 13 **Can You Change Your Personality With a Pill?** 484
- Chapter 14 **Is Religion Good for Your Health?** 518
- Chapter 15 **The Biology of Suicide** 546
- Chapter 16 **Can Common Herbs Treat Mental Disorders?** 594
- Chapter 17 **Pluralistic Ignorance and College Drinking** 616
- Chapter 18 **Culture and Cognition** 657