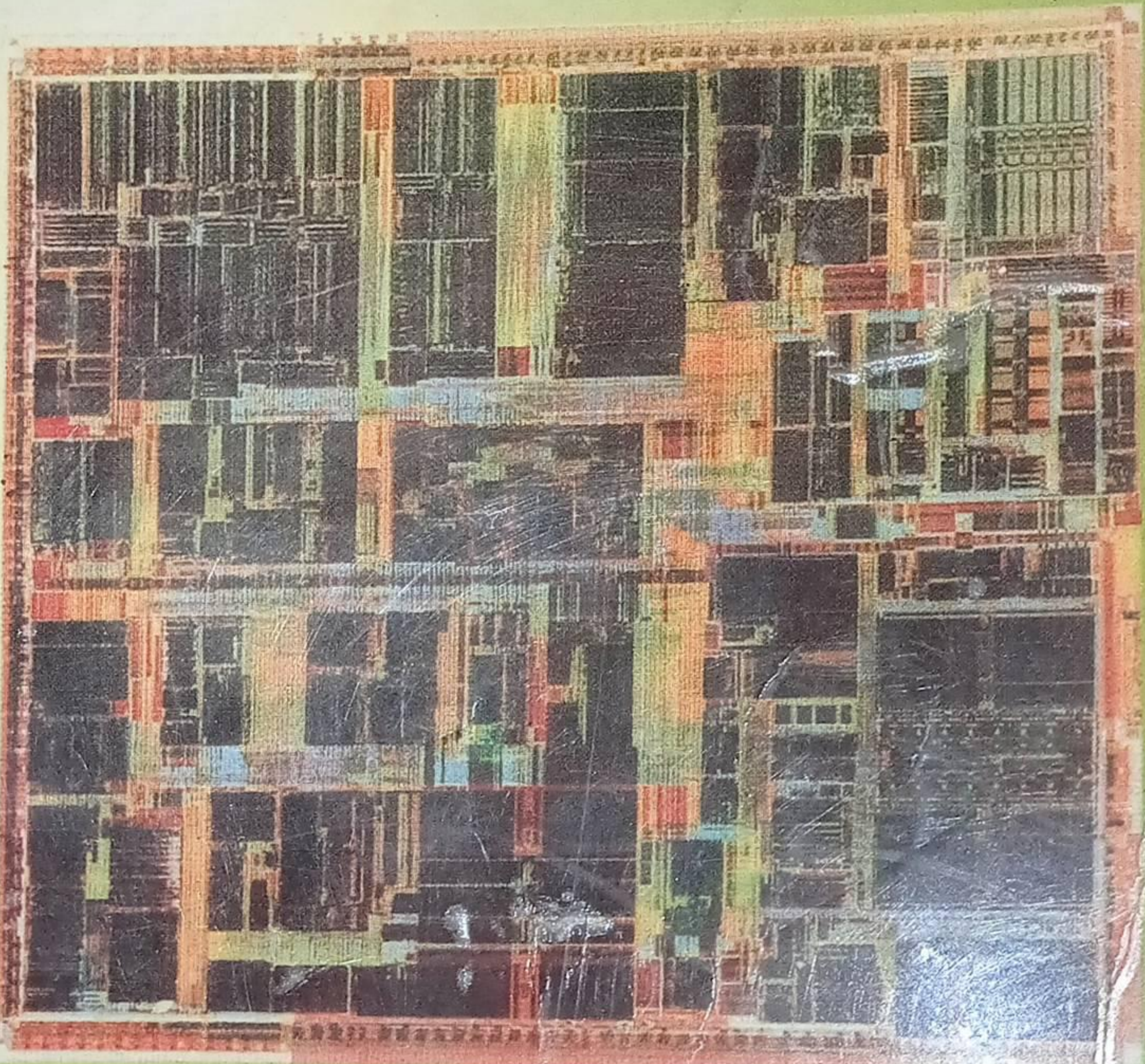


Kamesh S. Gaonkar

Fourth Edition

Microprocessor Architecture, Programming, and Applications with the 8085



Contents

PART I	MICROPROCESSOR-BASED SYSTEMS: HARDWARE AND INTERFACING	1
Chapter 1	Microprocessors, Microcomputers, and Assembly Language	3
	1.1 Microprocessors 4 □ 1.2 Microprocessor Instruction Set and Computer Languages 12 □ 1.3 From Large Computers to Single-Chip Microcontrollers 18	
Chapter 2	Microprocessor Architecture and Microcomputer Systems	25
	2.1 Microprocessor Architecture and Its Operations 26 □ 2.2 Memory 32 □ 2.3 Input and Output (I/O) Devices 49 □ 2.4 Example of a Microcomputer System 50 □ 2.5 <u>Review: Logic Devices for Interfacing 52</u>	<i>unit - I</i>
Chapter 3	8085 Microprocessor Architecture and Memory Interfacing	65
	3.1 <i>unit</i> [The 8085 MPU 66] □ 3.2 Example of an 8085-Based Microcomputer 79] □ 3.3 [Memory Interfacing] 86 □ 3.4 Interfacing the 8155 Memory Segment 93 □ 3.5 Testing and Troubleshooting Memory Interfacing Circuits 96 □ 3.6 How Does an 8085-Based Single- Board Microcomputer Work? 98	<i>unit - I</i>
Chapter 4	Interfacing I/O Devices	105
	4.1 Basic Interfacing Concepts 106 □ 4.2 Interfacing Output Displays 116 □ 4.3 Interfacing Input Devices 121 □ 4.4 Memory-Mapped I/O 123 □ 4.5 Testing and Troubleshooting I/O Interfacing Circuits 129 □ 4.6 Some Questions and Answers 130	

PART II	PROGRAMMING THE 8085	137
Chapter 5	Introduction to 8085 Assembly Language Programming	139
	5.1 The 8085 Programming Model 140 □ 5.2 Instruction Classification 142 □ 5.3 <u>Instruction and Data Format</u> 145 □ 5.4 How to Write, Assemble, and Execute a Simple Program 150 □ 5.5 <u>Overview of the 8085 Instruction Set</u> 154	
Chapter 6	Introduction to 8085 Instructions	161
	6.1 <u>Data Transfer (Copy) Operations</u> 162 □ 6.2 <u>Arithmetic Operations</u> 172 □ 6.3 <u>Logic Operations</u> 182 □ 6.4 <u>Branch Operations</u> 190 □ 6.5 <u>Writing Assembly Language Programs</u> 196 □ 6.6 <u>Debugging a Program</u> 201 □ 6.7 <u>Some Puzzling Questions and Their Answers</u> 201	
Chapter 7	Programming Techniques with Additional Instructions	213
	7.1 <u>Programming Techniques: Looping, Counting, and Indexing</u> 214 □ 7.2 <u>Additional Data Transfer and 16-Bit Arithmetic Instructions</u> 218 □ 7.3 <u>Arithmetic Operations Related to Memory</u> 227 □ 7.4 <u>Logic Operations: Rotate</u> 233 □ 7.5 <u>Logic Operations: Compare</u> 240 □ 7.6 <u>Dynamic Debugging</u> 247	
Chapter 8	Counters and Time Delays	261
	8.1 <u>Counters and Time Delays</u> 262 □ 8.2 <u>Illustrative Program: Hexadecimal Counter</u> 268 □ 8.3 <u>Illustrative Program: Zero-to-Nine (Modulo Ten) Counter</u> 271 □ 8.4 <u>Illustrative Program: Generating Pulse Waveforms</u> 274 □ 8.5 <u>Debugging Counter and Time-Delay Programs</u> 276	
Chapter 9	Stack and Subroutines	281
	9.1 <u>Stack</u> 282 □ 9.2 <u>Subroutine</u> 291 □ 9.3 <u>Restart, Conditional Call, and Return Instructions</u> 301 □ 9.4 <u>Advanced Subroutine Concepts</u> 302	
Chapter 10	Code Conversion, BCD Arithmetic, and 16-Bit Data Operations	309
	10.1 <u>BCD-to-Binary Conversion</u> 310 □ 10.2 <u>Binary-to-BCD Conversion</u> 313 □ 10.3 <u>BCD-to-Seven-Segment-LED Code Conversion</u> 315 □ 10.4 <u>Binary-to-ASCII and ASCII-to-Binary Code Conversion</u> 318 □ 10.5 <u>BCD Addition</u> 320 □ 10.6 <u>BCD Subtraction</u> 323 □ 10.7 <u>Introduction to Advanced Instructions and Applications</u> 324 □ 10.8 <u>Multiplication</u> 328 □ 10.9 <u>Subtraction with Carry</u> 330	

CONTENTS

CONTENTS

Unit 4 Interfacing Device
The 8255 PPI chip: Asch., control words, modes
Unit 5 -> DMA -> Intel 8237 DMA controller, 1 page
Unit 6 -> 8259 P

ix

137
139

Chapter 11 Software Development Systems and Assemblers 337

- 11.1 Microprocessor-Based Software Development Systems 338
- 11.2 Operating Systems and Programming Tools 340
- 11.3 (Assemblers and Cross-Assemblers 345) □ 11.4 Writing Programs Using a Cross-Assembler 349

161

PART III INTERFACING PERIPHERALS (I/Os) AND APPLICATIONS 357

Chapter 12 Interrupts 361

- 12.1 The 8085 Interrupt 362 □ 12.2 8085 Vectored Interrupts 371
- 12.3 Restart as Software Instructions 378 □ 12.4 Additional I/O Concepts and Processes 380

213

Chapter 13 Interfacing Data Converters 389

- 13.1 Digital-to-Analog (D/A) Converters 390 □ 13.2 Analog-to-Digital (A/D) Converters 400

Chapter 14 Programmable Interface Devices: 8155 I/O and Timer; 8279 Keyboard/Display Interface 441

- 14.1 Basic Concepts in Programmable Devices 412 □ 14.2 The 8155: Multipurpose Programmable Device 418 □ 14.3 (The 8279 Programmable Keyboard/Display Interface) 436

61

Chapter 15 General-Purpose Programmable Peripheral Devices 445

- 15.1 (The 8255A Programmable Peripheral Interface) 446
- 15.2 Illustration: Interfacing Keyboard and Seven-Segment Display 462
- 15.3 Illustration: Bidirectional Data Transfer Between Two Microcomputers. 471 □ 15.4 (The 8254 (8253) Programmable Interval Timer 477 □ 15.5 (The 8259A Programmable Interrupt Controller 488
- 15.6 (Direct Memory Access (DMA) and the 8237 DMA Controller 497

Unit 6
units

Chapter 16 Serial I/O and Data Communication 507

- 16.1 Basic Concepts in Serial I/O 508 □ 16.2 Software-Controlled Asynchronous Serial I/O 518 □ 16.3 The 8085—Serial I/O Lines: SOD and SID 521 □ 16.4 Hardware-Controlled Serial I/O Using Programmable Chips 524

Chapter 17 Microprocessor Applications 547

- 17.1 Interfacing Scanned Multiplexed Displays and Liquid Crystal Displays 448 □ 17.2 Interfacing a Matrix Keyboard 557 □ 17.3 Memory Design 565 □ 17.4 MPU Design 573 □ 17.5 Designing a System: Single-Board Microcomputer 576 □ 17.6 Software Design 581
- 17.7 Development and Troubleshooting Tools 587

Progble interval timer chip

Chapter 18	Extending 8-Bit Microprocessor Concepts to Higher-Level Processors and Microcontrollers	
18.1	Contemporary 8-Bit Microprocessors to the 8085	592
□ 18.2	Review of Microprocessor Concepts	595
□ 18.3	16-Bit Microprocessors	596
□ 18.4	32-Bit Microprocessors	610
□ 18.5	Single-Chip Microcontrollers	617
Appendix A	Number Systems	
A.1	Number Conversion	621
□ A.2	2's Complement and Arithmetic Operations	623
Appendix B	Introduction to the EMAC Primer	
B.1	The Primer Trainer	631
□ B.2	Using the Primer	640
Appendix C	Pin Configuration of Selected Devices	
C.1	Selected Logic and Display Devices: Pin Configuration and Logic Symbols	646
Appendix D	Specifications: Data Converters and Peripheral Devices	
	D/A and A/D Converters	□ D8279 Programmable Keyboard/Display Interface
	□ D8259 Programmable Interrupt Controller	□ D8237 DMA Controller
	□ LCD and Driver HD44780	
Appendix E	American Standard Code for Information Interchange: ASCII Codes	
Appendix F	8085 Instruction Set	
Appendix G	Solutions to Selected Questions, Problems, and Programming Assignments	
	Index	