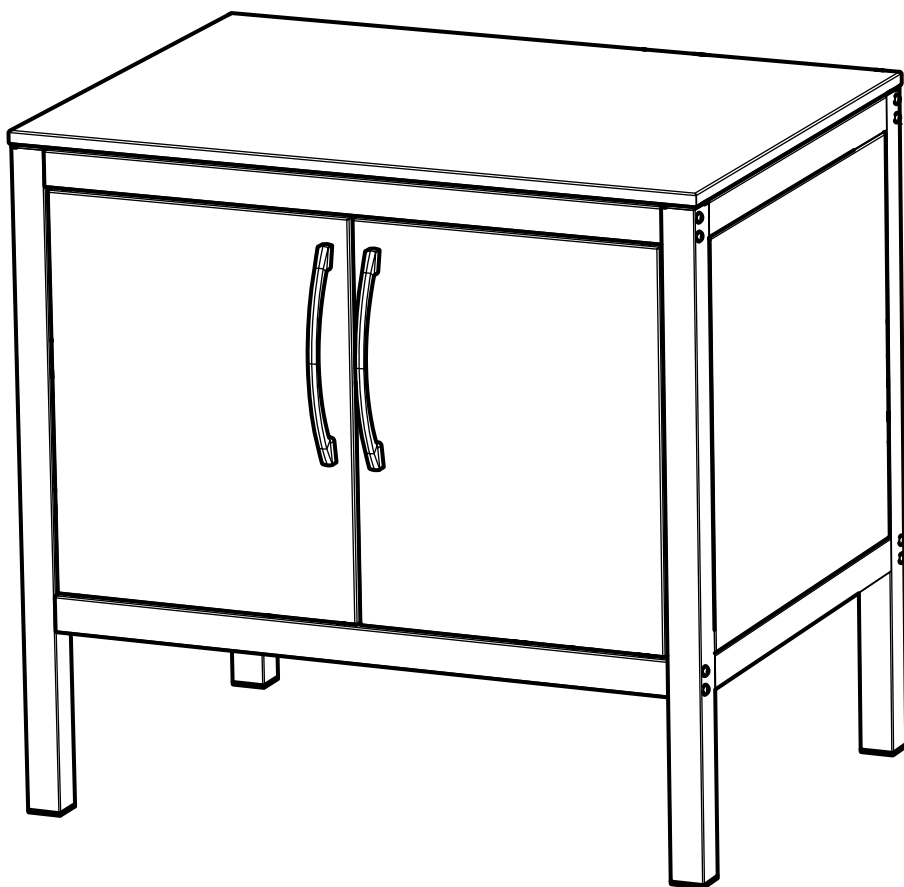
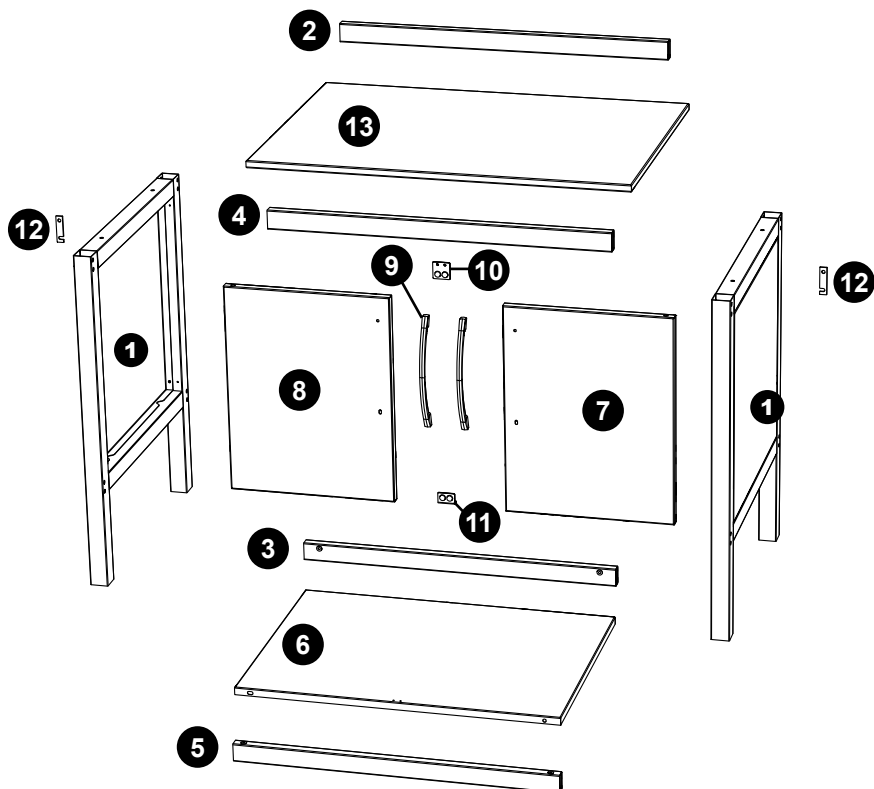


TOM 912567i EN



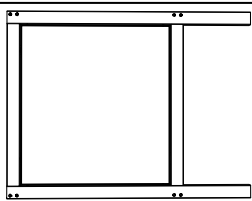


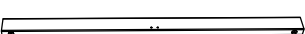

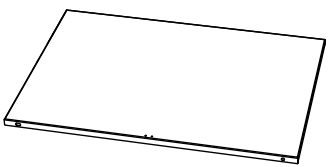
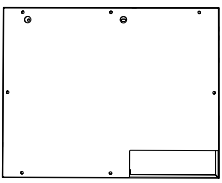
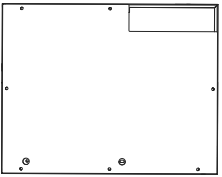

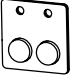
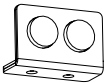
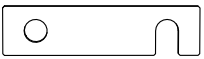
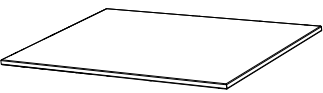



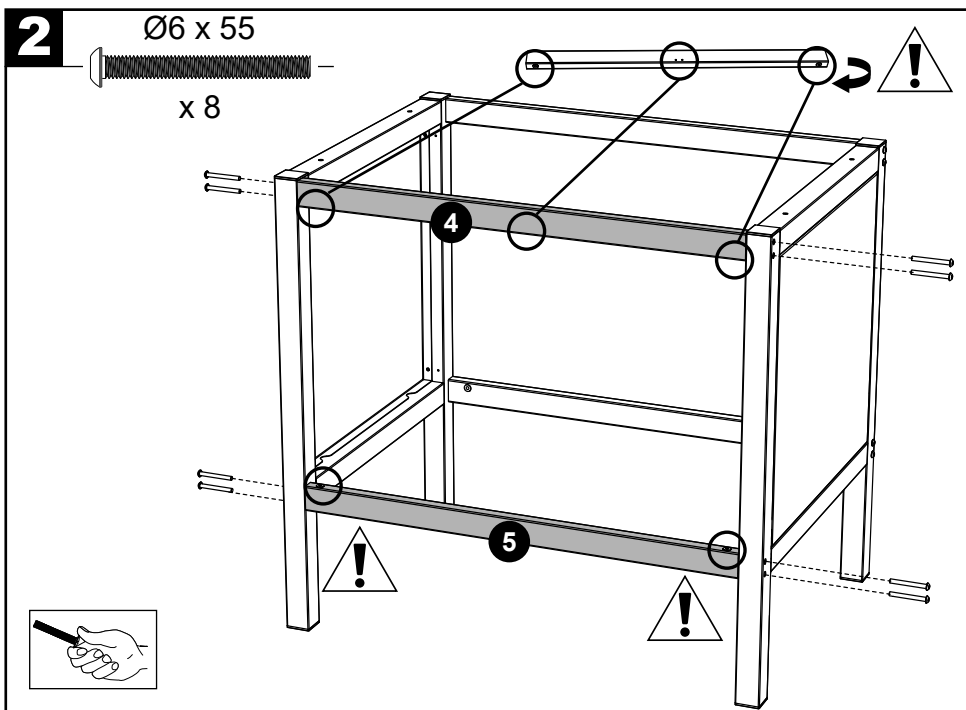
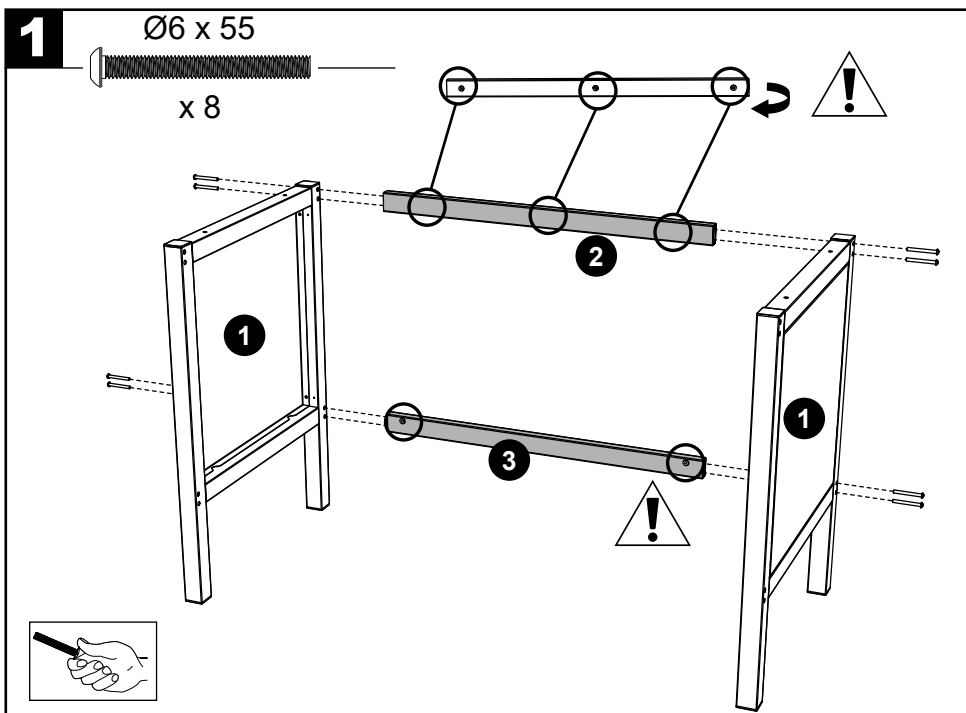
	6 x 55	16
	6 x 50	4
	6 x 16	6
	6 x 12	4

N TOM 912567i EN WT MAJ 29.09.25

	4 x 12	4
	3,5 x 9,5	4
	4	1

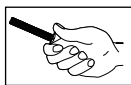
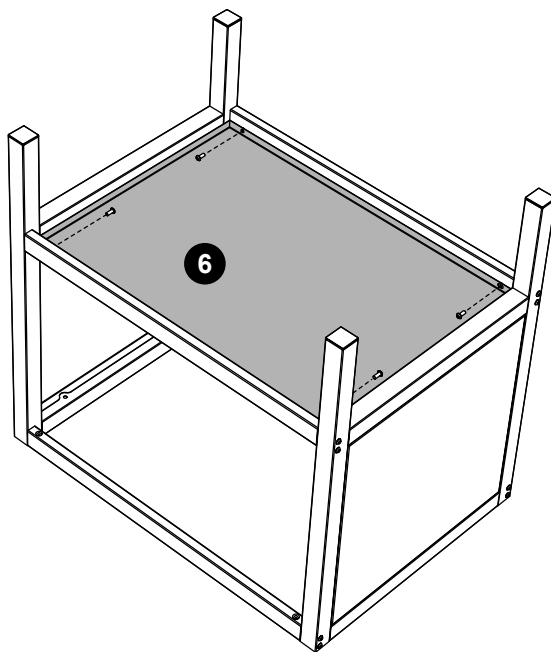
2/10

1		x 2
2		x 1
3		x 1
4		x 1
5		x 1
6		x 1
7		x 1
8		x 1
9		x 2
10		x 1
11		x 1
12		x 2
13		x 1
14		x 1

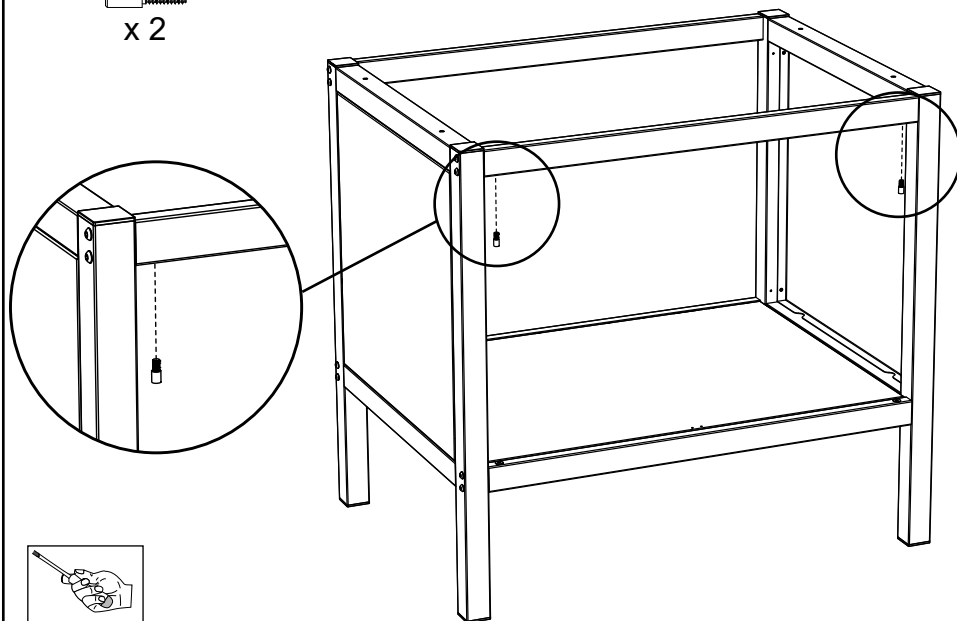


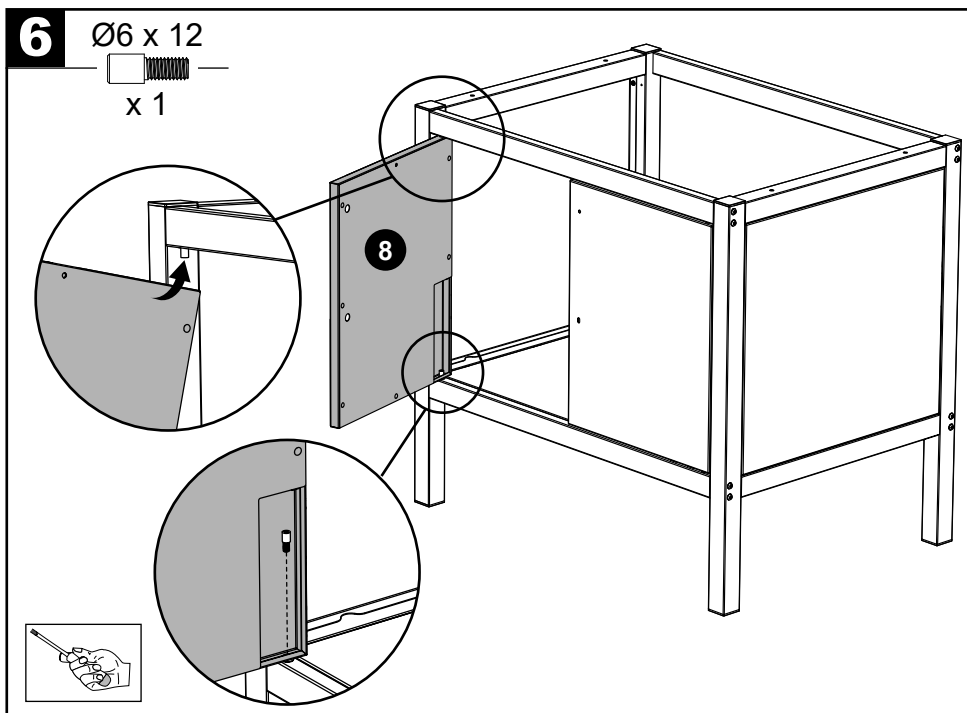
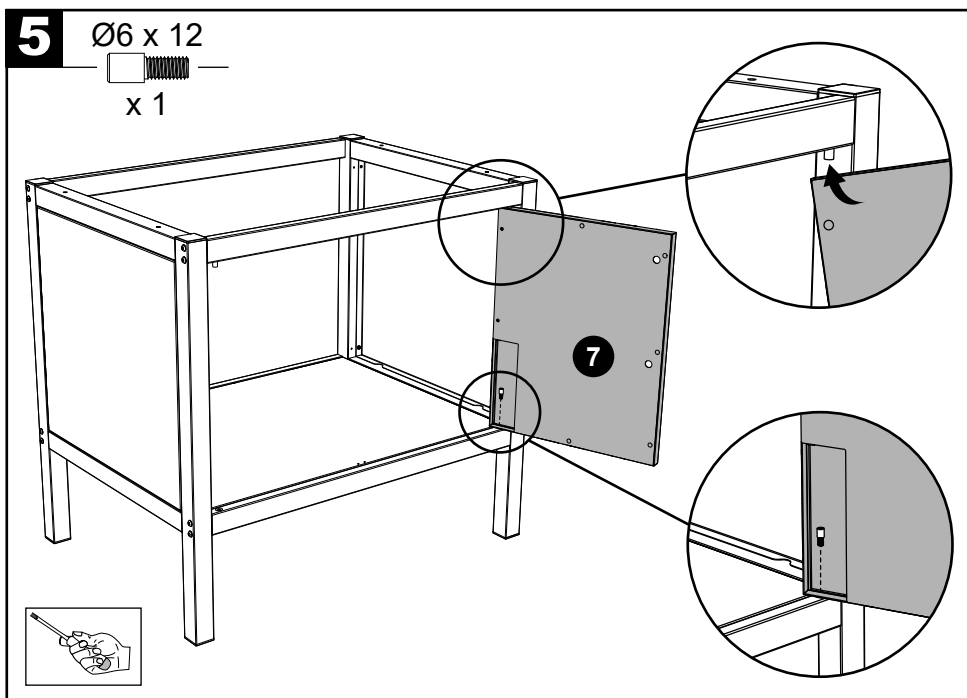
3 $\varnothing 6 \times 16$ 

x 4

**4** $\varnothing 6 \times 12$ 

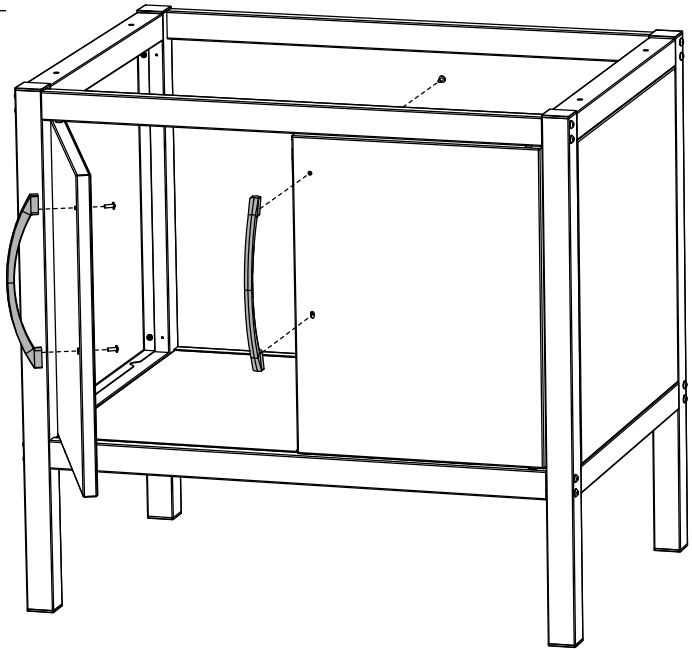
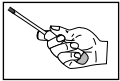
x 2



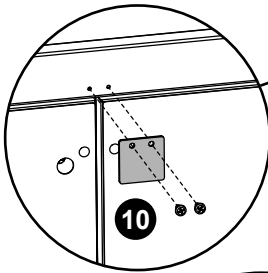
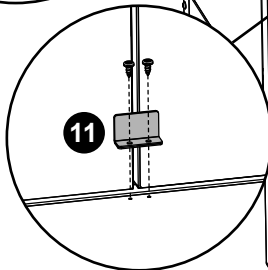
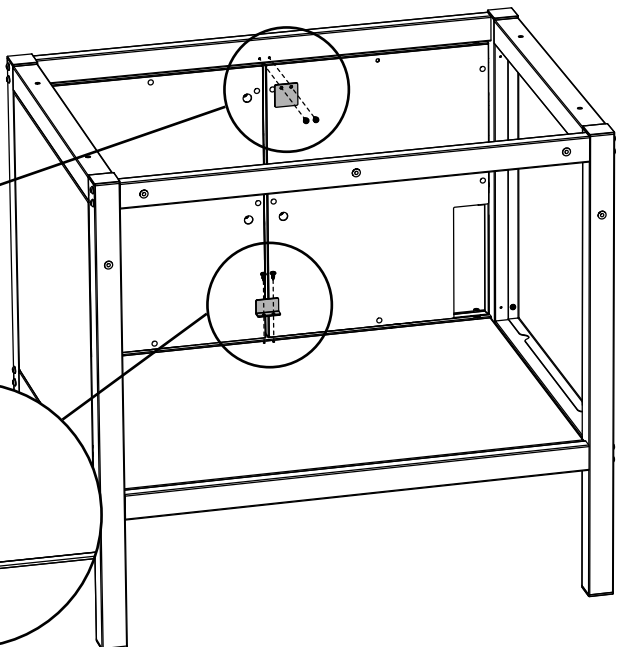
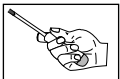


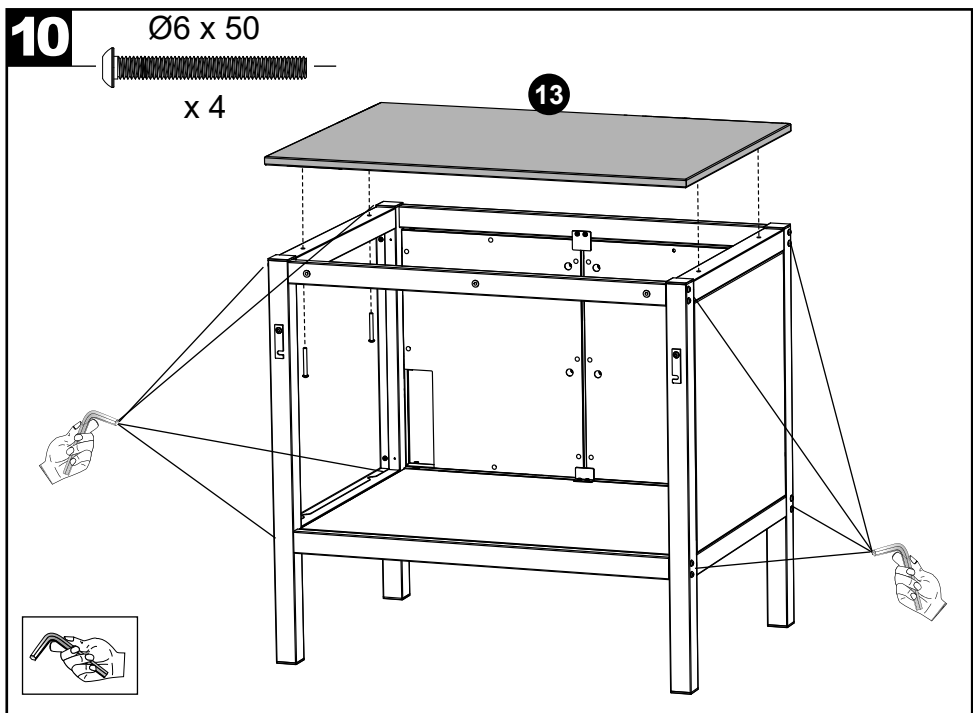
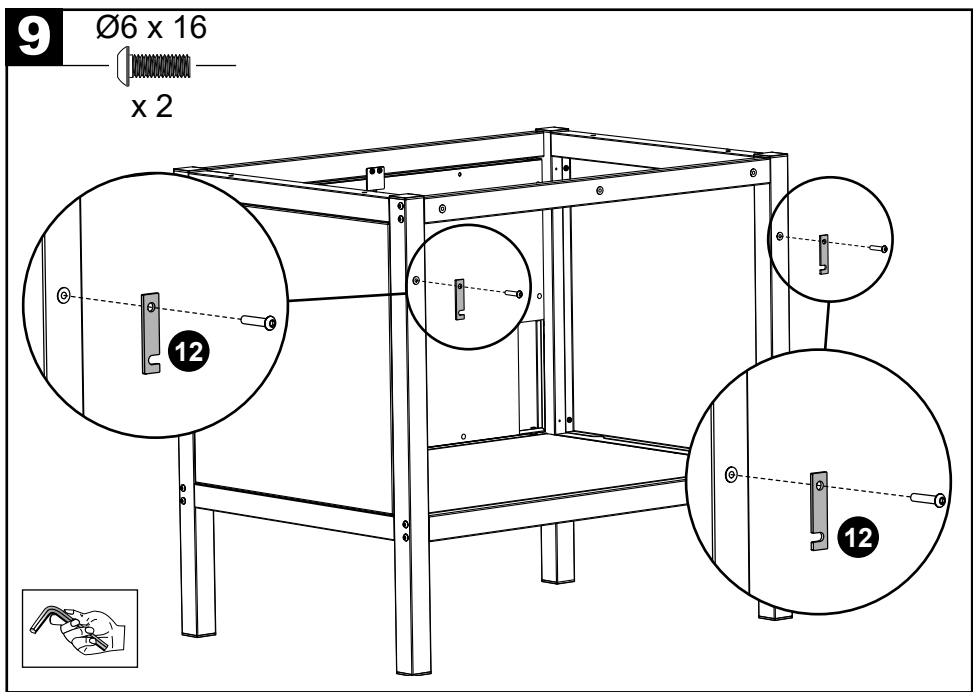
7 $\varnothing 4 \times 12$ 

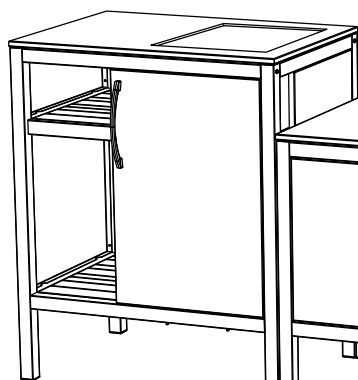
x 4

9**8** $\varnothing 3,5 \times 9,5$ 

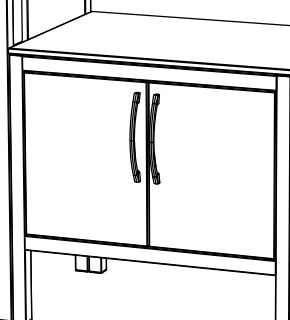
x 4

**10****11**

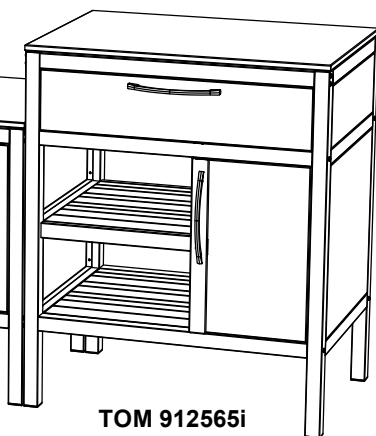




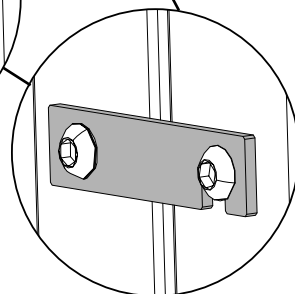
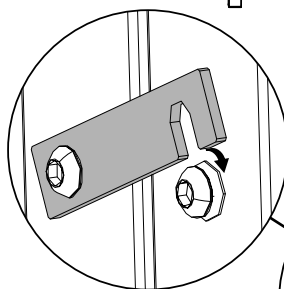
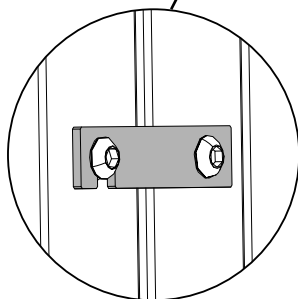
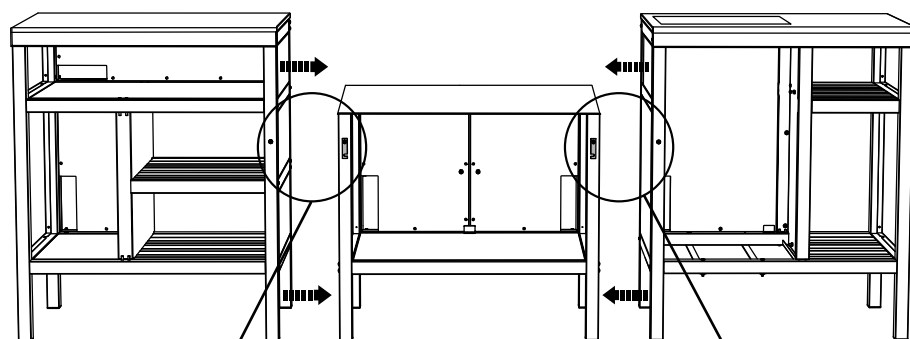
TOM 912566i



TOM 912567i



TOM 912565i



PRODUIT : ACIER

TOM 912567i

FABRIQUE EN CHINE**IMPORTANT :**

- A CONSERVER POUR CONSULTATION ULTERIEURE.
- A LIRE SOIGNEUSEMENT

A monter soi-même**DIMENSIONS EMBALLÉES : L 81,5 x H 16 x l 59 (cm)****DIMENSIONS MONTÉES : L 78,5 x H 95 x l 60,5 (cm)****DESCRIPTION :**

- Matériaux, piétements en acier, tôles acier.
- Charge maximale sur le plateau : 40 kg
- Cette desserte est conçue pour supporter des planchas.

INSTRUCTIONS D'UTILISATION ET D'ENTRETIEN :

- Avant la première utilisation, vérifier que les vis soient toutes bien serrées.
- Disposer la desserte sur une surface plane afin d'assurer sa stabilité.
- N'utiliser jamais la desserte sans la plaque tôle.
- Poser impérativement l'appareil sur la plaque tôle.
- Ne pas se mettre debout sur la desserte.
- Attention aux risques de pincement lors du montage / Pliage de votre produit.
- Ne pas ranger la desserte humide.
- Nettoyer à l'eau claire avec un chiffon doux.
- La maintenance doit se faire en fin de saison avant hivernage. Lubrifier de façon soutenue les extrémités du produit afin d'éviter l'apparition des phénomènes de rouille.



FR

**Pensez à
donner ou recycler.**

Association

ou



Magasin

ou



Déchèterie

<https://quefairedemesdechets.fr>**POUR UN USAGE DOMESTIQUE UNIQUEMENT**