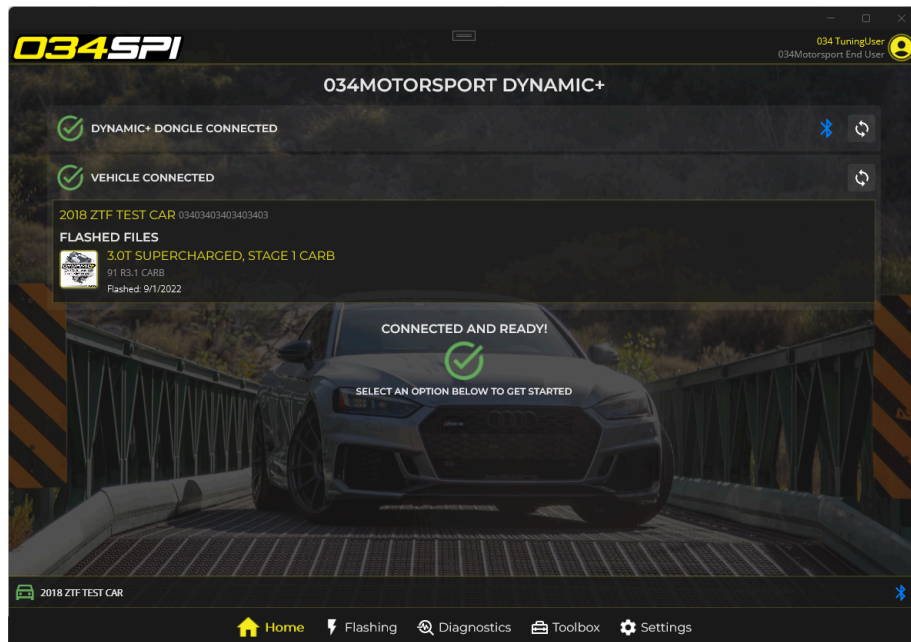


Last Updated 1-15-2025

034SPI User Guide

034Motorsport is pleased to provide flashing and diagnostics support to their customers on PC and Mobile platforms. Whether you use a mobile device or a PC, 034SPI provides the same easy to use functionality and experience.



Spiciness Rating



(Mild)

034SPI is designed to be easy to use and feature intuitive prompts and steps. Please read the entirety of this guide before using the software!

Dynamic+ Tuning Kit Includes:

- 034Motorsport Dynamic+ Dongle
- USB-A to USB-C Cable
- USB-C to USB-C Cable
- Carrying Case

Requirements for Flashing:

- Dynamic+ Tuning Kit
- 034Motorsport Dynamic+ Account Summary - Welcome Email
- Secure & Very Stable High-Speed Wireless Internet Connection
- Quality Battery Charger (CTEK or Similar, ~15-20 Amps)
- Available Electrical Outlets



034SPI Features and Requirements

034SPI is available for modern iOS and Android devices (phones and tablets) as well as PCs running Windows 10 and later. 034SPI is also supported on MacOS version 11 or higher.

034SPI allows 034Motorsport Performance Software customers to install their performance software on their ECU / TCU without visiting a 034Motorsport Performance Facility or 034Motorsport Dealer.

034SPI allows 034Motorsport Performance Software customers to receive and install software updates and revisions, flash back to stock, or upgrade to the next stage of performance software for their vehicle.

In addition to flashing, 034SPI allows for diagnostic procedures such as DTC Read & Clear, Data Logging, Live Data Viewing, Adaptations and more (diagnostics feature availability is subject to platform).

Additional Requirements for 034SPI (Mobile)

- iOS version 12 or higher -or- Android version 8 or higher
- Dynamic+ Tuning Kit with R4 or later Dynamic+ Dongle. (Identified by the presence of a USB-C port)

Additional Requirements for 034SPI (Windows)

- Windows 10 or later
- Available USB-C or USB-A port -or- Bluetooth w/ R4 or later Dynamic+ Dongle (USB connection is recommended when available)

Additional Requirements for 034SPI (MacOS)

- MacOS version 12 or higher.
- Dynamic+ Tuning Kit with R4 or later Dynamic+ Dongle. (Identified by the presence of a USB-C port)

Before You Begin

Please read the *entire* guide before attempting to flash ECUs and/or TCUs. While we strive to make the process as intuitive as possible, it is important to understand the entire flashing procedure before getting started.

Contents

1. Installing the Software
2. Signing In
3. Connecting your Dynamic+ Dongle
4. Preparing for Flashing
5. Performing the Initial Flash
6. Box Code Collection & File Requests

Getting Started

- Ensure you have all cables and tools required for installing Dynamic+ Performance Software.
- Park the vehicle in a secure area where it can be connected to a battery charger and to a laptop or device with a stable high-speed internet connection.

Installing the Software (Windows)

1. **Important:** Disable any third-party antivirus or firewall programs while installing or using the 034SPI.
2. Follow the link provided in your 034Motorsport Dynamic+ Account Summary welcome email to download the 034SPI Setup.
3. Run/Double Click the Setup application
4. Run 034SPI to ensure that the installation was successful.

Installing the Software (iOS/macOS)

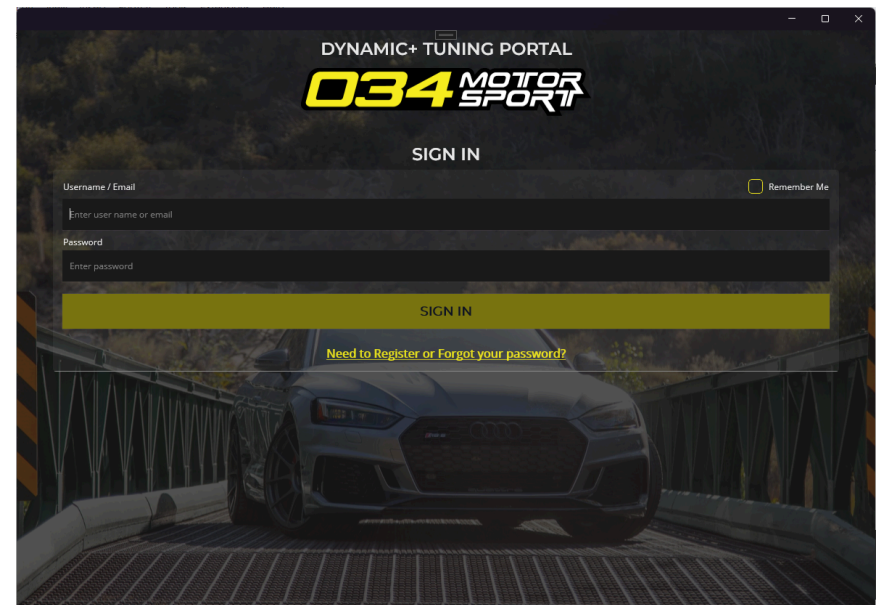
1. Follow the link provided in your 034Motorsport Dynamic+ Account Summary welcome email to download 034SPI from the AppStore. You can also search for “034Motorsport” or “034SPI” to find 034SPI in the AppStore.
2. Run 034SPI to ensure that the installation was successful.

Installing the Software (Android)

1. Follow the link provided in your 034Motorsport Dynamic+ Account Summary welcome email to download 034SPI from Google Play. You can also search for “034Motorsport” or “034SPI” to find 034SPI in Google Play.
2. Run 034SPI to ensure that the installation was successful.

Signing in

1. To register your account and sign into the app for the first time enter the username or email address that was provided in the 034Motorsport Dynamic+ Account Summary welcome email and click the “Need to Register” link.
2. An email will be sent with a link to allow you to set your password. Once your password has been set, your account is registered, and you may use your username and password to sign in to the app.



Connecting your Dynamic+ Dongle (Windows)

Preferred: Connect your USB cable to the PC and the Dynamic+ Dongle. Plug your Dongle into your vehicle's OBD-II port.

Optional: Ensure bluetooth is enabled on your PC. Plug your Dongle into your vehicle's OBD-II port. **Note:** A USB connection is preferred over bluetooth as it provides a faster and more reliable connection to the Dongle.

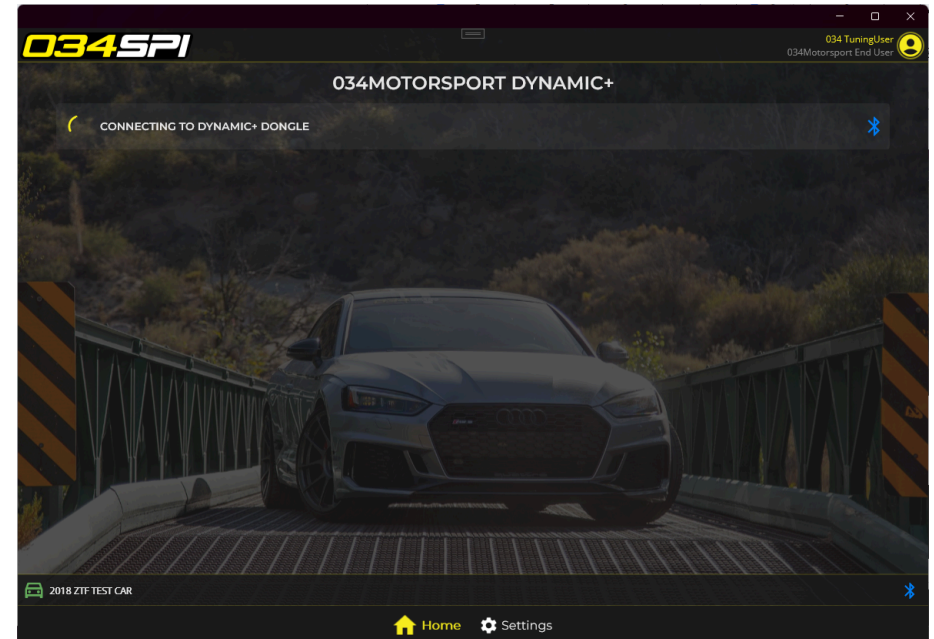
Connecting your Dynamic+ Dongle (Mobile/MacOS)

Upon initial sign in, grant access to the permissions requested by the app. These permissions are necessary to allow the app to use Bluetooth to communicate with the Dongle.

Ensure bluetooth is enabled on your device. Plug your Dongle into your vehicle's OBD-II port.

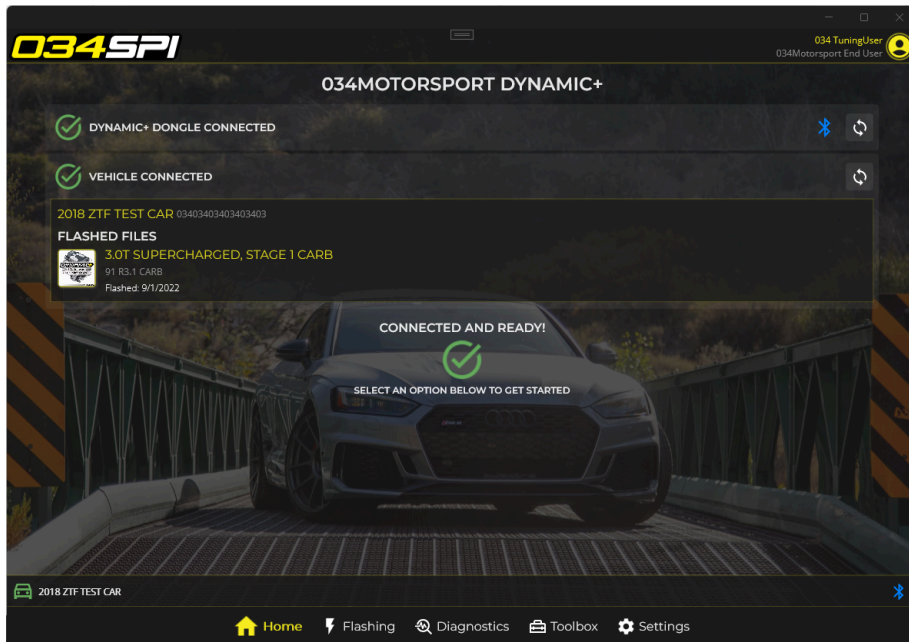
Connecting your Dynamic+ Dongle

Once on the main screen, the scanning process will begin automatically. If the Dongle was not found during the scan, follow the on screen instructions and click the retry button to scan again.



Connecting your Dynamic+ Dongle (Continued)

After a connection has been made with the Dongle, the app will automatically connect to your vehicle. If the vehicle was not connected, follow the on screen instructions and click the retry button to attempt again.



Once 034SPI has connected to your vehicle, click on the Flashing option in the tab bar at the bottom of the screen to begin flashing your 034Motorsport Performance Software.

Connecting your Dynamic+ Dongle (Continued)

Note: During the connection step, your 034Motorsport Dynamic+ Dongle may be updated with the most recent firmware. This process should execute automatically, but in the event of failure, disconnect the cable from the OBD port and USB port (if connected to USB), then reconnect and try again.

Preparing for Flashing

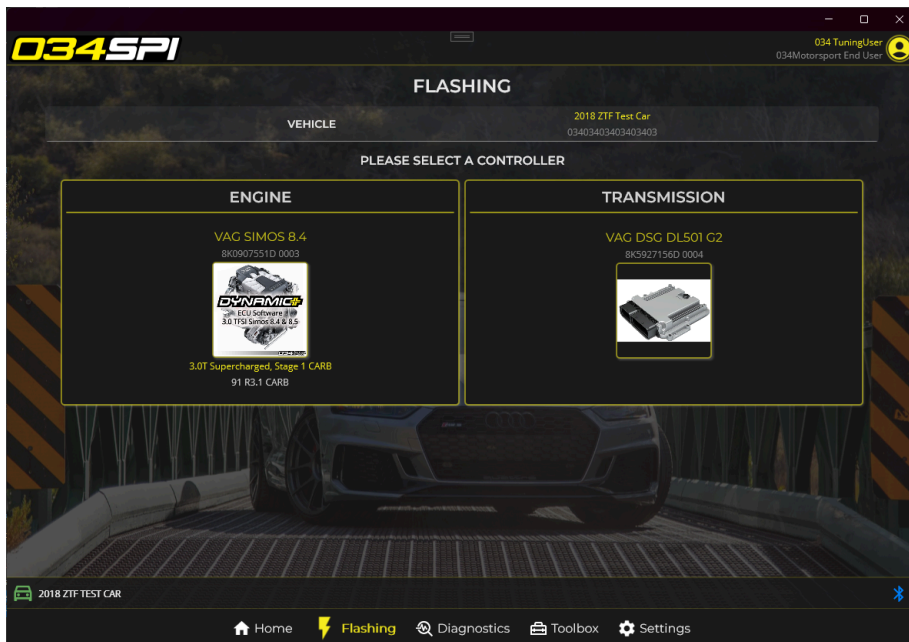
1. **Important:** Park the vehicle in an area (preferably a covered garage) with easy access to a Secure Wired (or very stable WiFi) High-Speed Internet Connection and Electrical Outlets.
2. **Important:** Disable any aftermarket components that communicate on the vehicle's OBD bus such as electronic gauges, remote starters, etc. Please email support if you are unsure about a specific component that you have installed.
3. Turn off any accessories that draw power from the battery. (ie: Headlights, Auto Headlights, Stereo, Climate Control)
4. Turn the Key/Ignition to Off.
5. Connect a trickle charger to an available outlet and the vehicle's battery.

Performing the Initial Flash

1. Ensure the PC/device has ample battery or supplied power and stable internet connection.
2. Turn the Key/Ignition to On. Do not start the engine (Engine Off!)
3. From the Home screen, click the **Flashing** button in the tab bar at the bottom of the screen to navigate to the Flashing section.

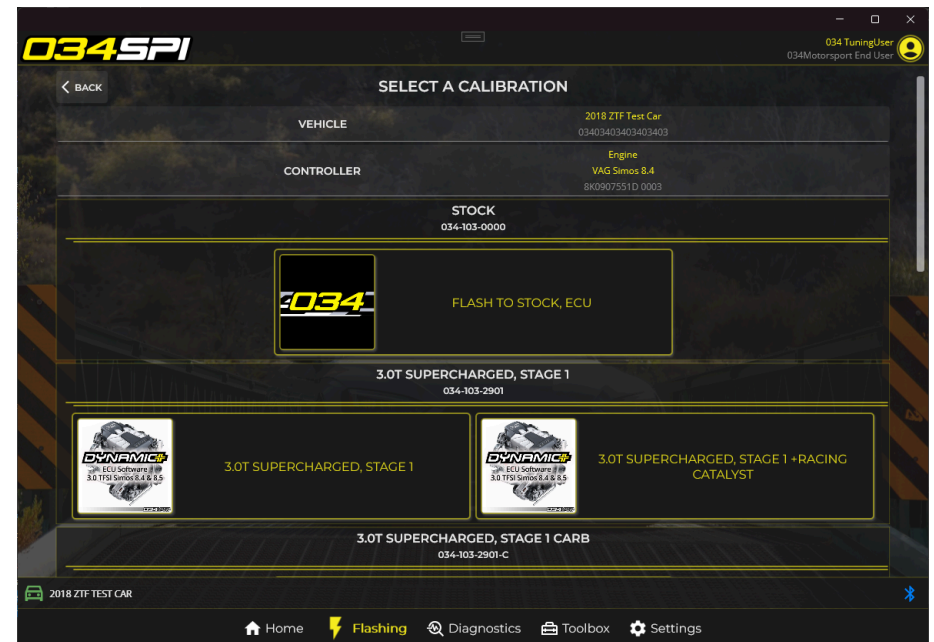
Performing the Initial Flash (Continued)

- Click on the controller (Engine, Transmission, AWD) that you wish to flash to continue.



Performing the Initial Flash (Continued)

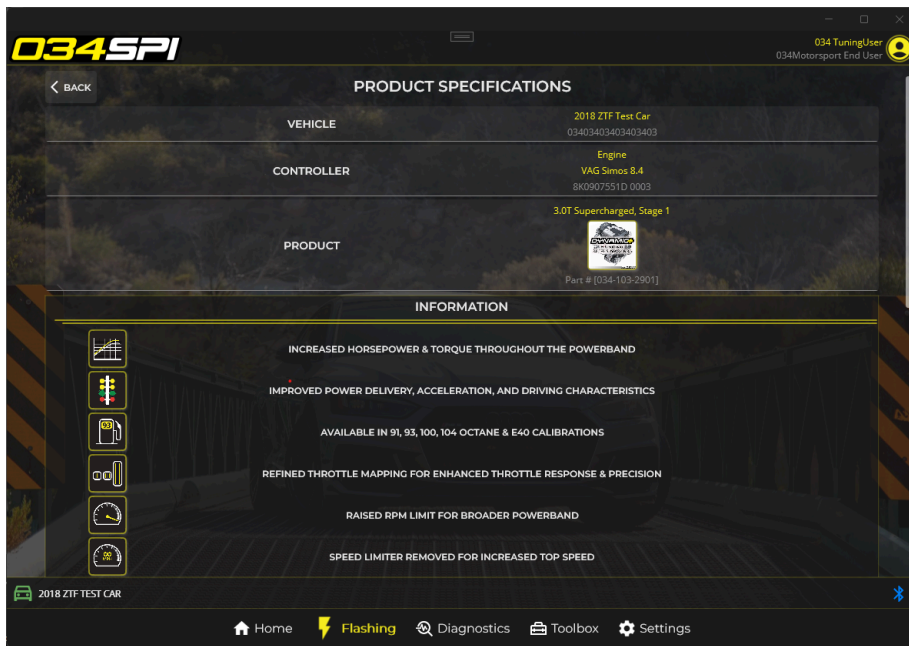
- On the next screen, select the desired calibration from the list. Be sure to scroll down the screen to view all of the available calibrations. A lock icon will display on calibrations that you do not have credits to flash.



Important: Do not flash software that the vehicle does not meet the specific hardware requirements for. Do not run a lower octane fuel than what is required for the file selected.

Performing the Initial Flash (Continued)

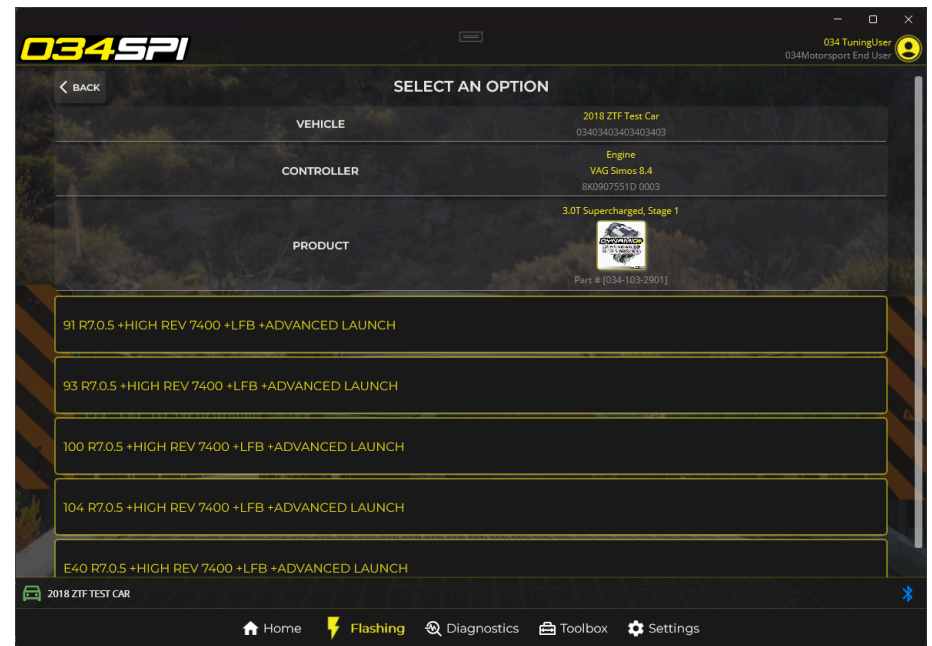
- After choosing your calibration, product specifications will be shown. Review the listed specifications. Click the **"GOT IT!"** button at the bottom to continue.



Important: Read specification information carefully to ensure the vehicle meets the requirements of the selected calibration. Do not flash software that the vehicle does not meet the specific hardware requirements for.

Performing the Initial Flash (Continued)

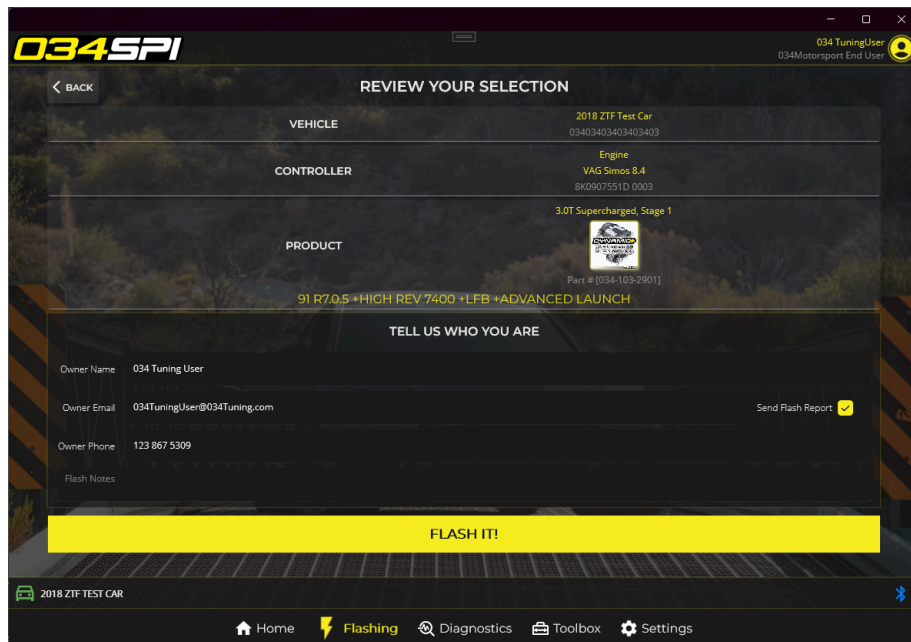
- Select the variant (fuel type and optional features) you wish to flash. Be sure to scroll down the screen to view all available options.



Important: Do not run a lower octane fuel than what is required for the file selected.

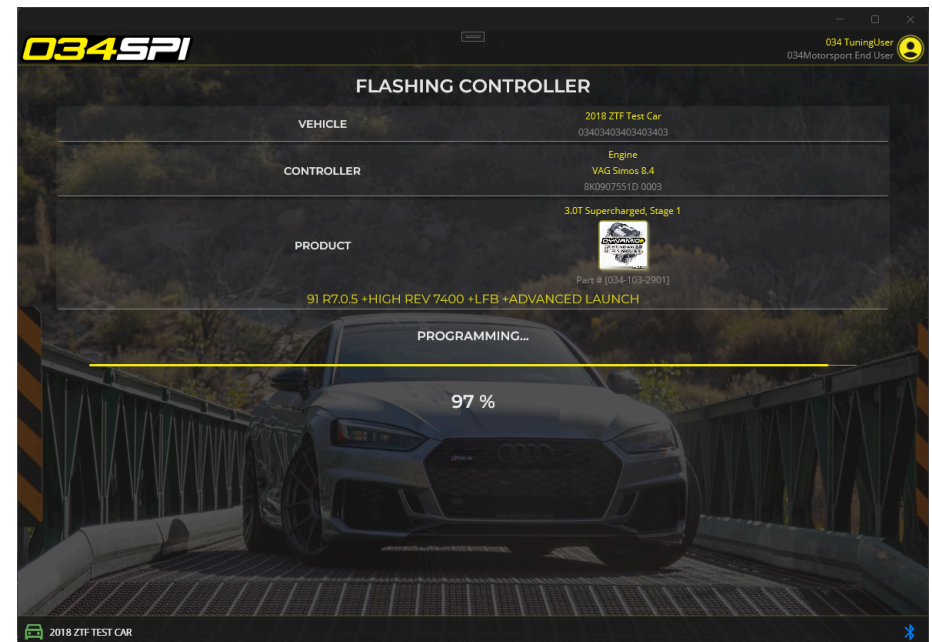
Performing the Initial Flash (Continued)

- Finally, review your selection, verify that the correct calibration and octane are selected and enter the Owner's information. Click **FLASH IT!** to start the flashing process.



Performing the Initial Flash (Continued)

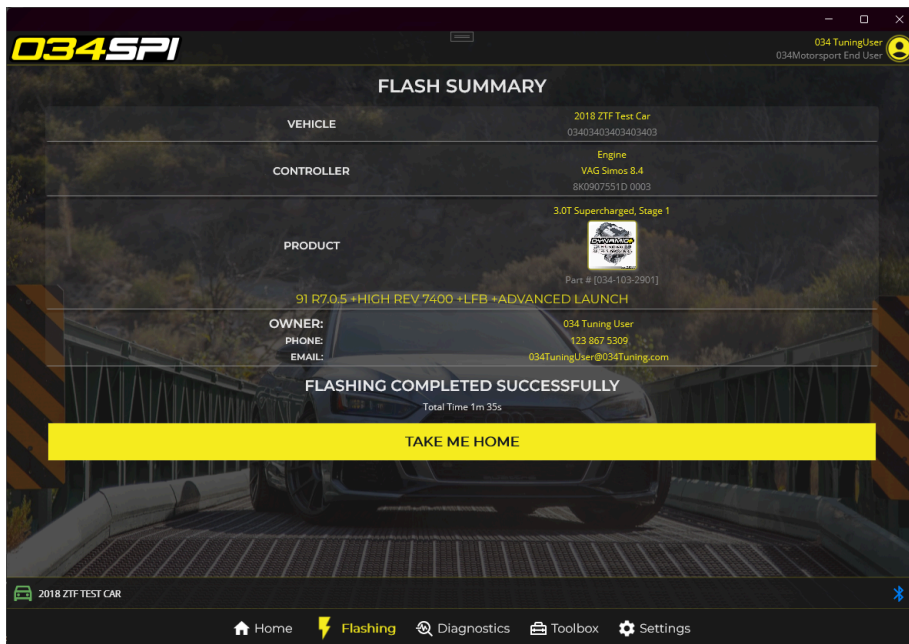
- Follow the prompts on the following screen, noting the necessary key/ignition cycles. **Do Not Start Vehicle, Turn Key Off, or Disconnect Cable During the Flashing Process!**



Please Note: During the flashing process, you will encounter multiple warnings/lights on the dash from various systems. This is completely normal and will be resolved at the end of the flash.

Performing the Initial Flash (Continued)

10. Once flashing is complete, follow any key/ignition cycle prompts. If there were no errors during the flashing process, you will see **FLASHING COMPLETED SUCCESSFULLY**. You may now close the software and start the vehicle.



Performing the Initial Flash (Continued)

11. Disconnect the Battery Charger.
12. The 034SPI will clear any faults after the flash process. Should any fault codes or DTCs remain after the flashing process, they can be cleared within the Diagnostics area or by driving the car for a few minutes after the initial flash.
13. If you encounter any issues during the flashing process, please email tuning@034motorsport.com
14. If you are flashing Dynamic+ Performance Software for the first time, there should be an immediately noticeable performance improvement over the factory calibration. Please keep in mind that there is a "learning" period for the tune, as the ECU will adapt slightly to the car and driving conditions.

Flashing Q&A

Q: I Identified my ECU/TCU and the only file I see says “OEM Update”, what is that?

A: At times the OEM's will release new software for given control units. Depending on the application we may require that you update to the 'current' release of software before programming the performance calibrations. **You will need to flash the OEM update first, then start the flash process again to select your performance file.**

Q: Should I flash my car for the very first time right before I have to leave for work?

A: No, wait until you have some stress free time to familiarize yourself with the process and the time involved.

Flashing Q&A (continued)

Q: Is a McDonalds parking lot with free wi-fi a good place to flash my car?

A: No, do it at home or somewhere with good wifi/internet, and the required resources (battery charger, a place to sleep, etc) should something go awry.

Q: I flashed my car and now “XXX” is happening, should I spam every social media outlet to get a cloud sourced opinion?

A: Sure, but you'll get a much faster and more helpful response by emailing tuning@034motorsport.com first.

Flashing Q&A (continued)

Q: I have access to 94 octane, is it safe to use that with a 93 octane map?

A: Yes, you can run gasoline with octane ratings that meet or exceed the calibration you have flashed (be aware some race fuel is leaded, stay away from that unless you know what you are doing).

Q: I identified my ECU/TCU and then the 034SPI said *"No products are available for this controller"*, why?

A: This indicates that either we have not yet loaded that exact software to the server, or we simply need to change some setting on your account so you can access it. Email tuning@034motorsport.com and we will address it ASAP. In some rare instances we may need to perform an 'extraction' and read the calibration from your vehicle, you will be contacted with the information on what that entails if that is the case.

Flashing Q&A (continued)


Q: I already have some other tune on my car (or I don't know if I have another tune on my car), what should I do?

A: To ensure the smoothest process, flash the "Flash to Stock" calibration first. Then start the flashing process again to select your performance file. This will ensure that we are starting from a good known/OEM state.

Q: Boy, that's a lot of words! Do you have a walk-through video I can review?

A: You betcha! Check out this 034SPI demonstration on YouTube.

<https://www.youtube.com/watch?v=nqIQbd8HgXE>

 How to Flash Your Volkswagen or Audi with Dyna...